



Viscometer

Wyatt's ViscoStar viscometer is an on-line chromatography detector for determining specific and intrinsic viscosities. The instrument includes a software-based pulse-dampening correction algorithm and temperature control for temperatures ranging from 4 °C to 60 °C. The system is compatible with most HPLC systems. Wyatt Technology Corporation, Santa Barbara, CA.

www.wyatt.com

Circle 100



MS system

The Waters Synapt High Definition MS (HDMS) system is designed for researchers working at the limits of conventional MS and who need to further characterize and define complex samples. The system reportedly uses an ion-mobility-based measurement and software to analyze sample ions differentiated by size and shape. According to the company, this additional dimension of separations fidelity leads to improved specificity and sample definition. Waters Corporation, Milford, MA.

www.waters.com

Circle 101



SPE instrument

Gilson's GX-274 ASPEC SPE instrument is designed for to maximize efficiency and throughput with the unattended, parallel processing of samples via solid-phase extraction. The four-probe instrument's two dual syringe pumps reportedly allow users to transfer liquids, process up to four samples in parallel, and monitor pressure on each fluid path individually. Gilson, Inc., Middleton, WI.

www.gilson.com

Circle 103



LC media

Daiso's Bio LC packing material is designed for the complex separation of proteins and peptides. According to the company, the packing is suitable for biopharmaceutical applications because of its stability under severe alkaline and acidic conditions. The material is offered with the same bonding chemistry in three pore sizes: 120 Å, 200 Å, and 300 Å. Daiso Fine Chem USA, Santa Clara, CA.

www.daiso-co.com

Circle 104



Solvent solutions

Honeywell Burdick & Jackson's LabReady solvent blends are designed to reduce concerns of contamination, solvent disposal, and exposure that might occur from blending solvents in the laboratory. The blends reportedly are made in a flexible, closed loop system, which prevents impurities from contaminating the blends. According to the company, the blends have less batch-to-batch variation versus competitive or in-house blended products. Honeywell, Burdick & Jackson, Muskegon, MI.

www.honeywell.com/burdickandjackson

Circle 102



pH detector

OI Analytical's pHDetect module is designed to automate measurement and recording of pH values of water samples during purge-and-trap analysis of volatile organic compounds. The module is designed to operate with the company's Eclipse 4660 purge-and-trap sample concentrator to verify samples have been preserved at the proper pH for compliance with US EPA methods. OI Analytical, College Station, TX.

www.oico.com

Circle 105



Prepackaged HPLC mobile phases

CHATA's CHEM+NECT prepackaged solutions are designed to be an alternative to traditional HPLC mobile phase preparation. According to the company, GMP procedures are used to prepare standard or custom-blended chemistry solutions according to customer specifications. The company's patented, flexible film packaging system ensures sterile, filtered, and degassed solutions. The packaging system uses reagent-grade components that can be connected to any HPLC system. CHATA Biosystems, Fort Collins, CO.

www.chatasolutions.com

Circle 106



SPE cartridges

Evolved Nanomaterial Sciences' ENS chiral SPE cartridges are designed to enrich enantiomeric mixtures in minutes. The SPE cartridges are available in 1-, 3-, and 6-mL sizes. The cartridges reportedly extract one enantiomer while allowing the second to flow through. Evolved Nanomaterial Sciences, Cambridge, MA.

www.ensnano.com

Circle 109



Website

LECO's www.leco.com website is designed with features such as pull-down menus, instrument displays, and navigation buttons. Additional value-added resources and support functions such as application libraries, instrument reference, and service support can also be accessed from the site. LECO Corporation, St. Joseph, MI.

www.leco.com

Circle 107



Recycling program and packaging

MicroLiter offers a recycling program and packaging for closures and inserts. The packaging is designed to store and maintain consumable supplies. The top of the pack can be cut to dispense like a coin purse, or it can be installed on the company's benchtop dispenser. Users can return empty containers to the company using a company-provided UPS return service label so that the containers can be used on their next order. MicroLiter Analytical Supplies, Inc., Suwanee, GA.

www.microliter.com

Circle 110



Immobilized liquid extraction system

Wohleb Scientific's immobilized liquid extraction (ILE) system is designed for extracting organic compounds from aqueous samples for gas and liquid chromatographic analysis. The system reportedly involves a device that is coated with a sorptive siloxane-elastomer such as polydimethylsiloxane (PDMS), which acts as the extraction medium. Wohleb Scientific, Incorporated, Ferndale, CA.

www.wohle.com

Circle 108



Immobilized capillary columns

Chiral Technologies' CHIRALPAK IA and IB capillary columns are designed to offer rapid chiral separations with longer column life and enhanced sample solubility. Chiral Technologies, Inc, West Chester, PA.

www.chiraltech.com

Circle 111



Automated evaporator-concentrator

The DryVap automated concentrator system from Horizon is designed to combine Kuderna-Danish concentration, nitrogen blow down, and drying of organic solvents into one step with precision and accuracy for GC and GC-MS analyses. According to the company, the bench-top system uses a separation membrane that automatically dries solvents in seconds and that concentrates solvent volumes of 2–200 mL to precisely 0.9 mL in less than 30 min. Horizon Technology, Inc., Salem, NH.

www.horizontechinc.com

Circle 112



SPE products

Varian's Bond Elut Plexa polymeric SPE laboratory consumable products are designed to deliver improved analytical performance, ease of use, and a more streamlined sample preparation process to pharmaceutical researchers. According to the company, the product's polymeric design improves extract cleanliness and analyte recovery, resulting in improved analytical sensitivity and superior data quality. Varian, Inc., Palo Alto, CA.

www.varian.com

Circle 115



Nitrogen generator

Parker Balston's NitroFlow Lab self-contained membrane nitrogen generator is designed to produce up to 99% pure nitrogen with pressures up to 116 psig. According to the company, high and low pressure compressors filtered by high efficiency coalescing filters remove contaminants down to 0.01 μ m. Parker Balston, Haverhill, MA.

www.parker.com

Circle 113



Nanoflow LC system

Hitachi's NanoLC chromatography system is designed for research laboratories. The system reportedly can be configured for two-dimensional chromatography enabling complete online separations of complex protein samples. According to the company, the system provides gradient and retention time reproducibility at nanoflow rates (50 nL/min). Hitachi High Technologies America, Inc., Schaumburg, IL.

www.hitachi-hta.com

Circle 116



Developing chamber

CAMAG's ADC2 automatic developing chamber is designed to improve the reproducibility of TLC results. According to the company, the developing chamber addresses the problems of varying chamber conditions and of varying layer or plate activation before development by controlling the variations, whether they are environmentally or analyst induced. CAMAG Scientific, Inc., Wilmington, NC.

www.camag.com

Circle 114



Adjustable vial cap crimper

Kebby Industries' bench-top vial cap crimper is designed with a built in crimp adjustment dial, allowing operators to make incremental adjustments as fine as 0.15 mm to compensate for seal or septa thickness. According to the company, settings can be recorded and returned to for precise, repeatable crimping and decapping of vials and bottles. Kebby Industries, Inc., Rockford, IL.

www.kebbyindustries.com

Circle 117



HPLC system

Agilent's 1200 series HPLC system is designed with more than 60 instrument modules and can be configured for standard, nanoflow, capillary, narrow, prep-scale, and chip-based liquid chromatography. The system reportedly is compatible with the company's 1100 series and is available in a Rapid Resolution configuration featuring more than 70 new RRHT columns. Agilent Technologies, Inc., Palo Alto, CA.

www.agilent.com/chem

Circle 118



Derivatization reagent

A derivatization reagent from Regis Technologies, 3 N hydrochloric acid in butanol, is used for newborn metabolic screening by tandem MS. According to the company, production under cGMP protocols ensures lot-to-lot consistency. The reagent is available in a variety of packaging types. Regis Technologies, Inc., Morton Grove, IL.

www.registech.com

Circle 121

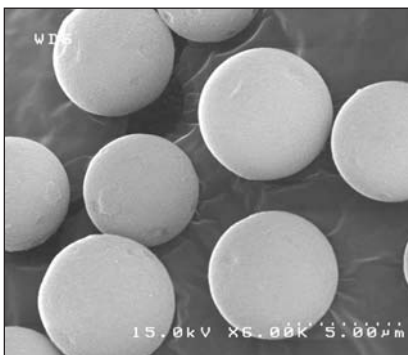


Affinity chromatography media

Millipore's ProSep affinity chromatography media are designed for affinity purification of antibodies and other proteins and nucleic acids. The media reportedly use porous glass as the support, permeated by interconnecting pores of uniform and precisely controlled size. Millipore's Bioscience, Billerica, MA.

www.millipore.com/bioscience

Circle 119



LC media

Daiso's Bio LC packing material is designed for the complex separation of proteins and peptides. According to the company, the packing is suitable for biopharmaceutical applications because of its stability under severe alkaline and acidic conditions. The material is offered with the same bonding chemistry in three pore sizes: 120 Å, 200 Å, and 300 Å. Daiso Fine Chem USA, Santa Clara, CA.

www.daiso-co.com

Circle 122

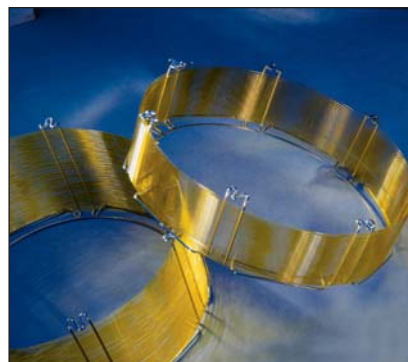


HPLC column

Dionex's ProPac HIC-10 silica-based high-capacity HPLC column is designed for the separation of proteins and peptides by hydrophobic interaction chromatography. According to the company, the column has been used for applications ranging from the separation of serum proteins, human skeletal muscle total protein, and snake venom proteins to pancreatin and monoclonal antibodies. The column's stationary phase is based on 5- μm ultrahigh-purity spherical silica gel particles, with 300-Å pores. Dionex Corporation, Sunnyvale, CA.

www.dionex.com

Circle 120



Capillary GC columns

Grace's Alltech Heliflex AT 1-ms and AT 5-ms capillary GC columns are designed to provide high sensitivity for demanding MS applications. According to the company, the columns exhibit high thermal stability and low column bleed. Grace Davison Discovery Sciences, Deerfield, IL.

www.discoverysciences.com

Circle 123



LC columns

Michrom's LC columns are designed with inner diameters of 0.075–2.0 mm and lengths of 50, 100, and 150 mm. Several packing materials are available. The microbore columns are made of glass-lined stainless steel with titanium frits. Nano and capillary columns are made of fused silica sheathed with PEEK and include titanium frits. The company's Magic Bullet high throughput columns are made of injection-molded PEEK and also include titanium frits. Michrom, Auburn, CA.

www.michrom.com

Circle 124



Polypropylene vials

J.G. Finneran's 1.5-mL Versa Vial polypropylene vials are designed for chromatography and pharmaceutical applications. The vials reportedly are available with a snap finish, an 11-mm crimp finish, and 8-425 and 9-mm screw thread finishes. According to the company, the design accommodates sealing methods such as PTFE-silicone plugs, chlorobutyl-siliconized plugs, PTFE-silicone plugs with a slit, and polyethylene plugs. The vials also are available in amber. JG Finneran Associates, Vineland, NJ.

www.jgfinneran.com

Circle 127



Fractionator

Agilent's model 3100 OFFGEL fractionator is designed to fractionate proteins and peptides with simplicity and resolution. According to the company, the instrument enables scientists to identify more proteins, peptides, and potential biomarkers by LC-MS. The instrument reportedly provides a means of fractionating both intact proteins and peptides by their isoelectric point. Agilent Technologies, Inc., Palo Alto, CA.

www.agilent.com/chem

Circle 125



GC-MS system

Shimadzu's QP-2010 Plus GC-MS system is designed for rapid analysis of difficult samples, the determination of trace components, and the characterization of complex organic mixtures. The system reportedly provides a 1.5–1090 m/z mass range as well as a 100–300 °C ion source temperature range. Shimadzu Scientific Instruments, Inc., Columbia, MD.

www.ssi.shimadzu.com

Circle 128

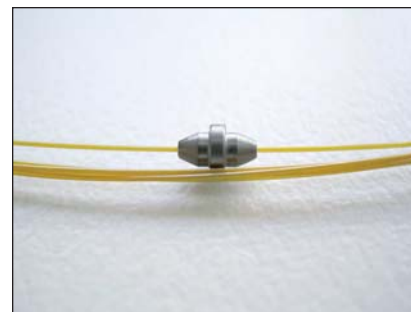


Ultrasonic cleaner

Tovatech's Elmasonic S ultrasonic cleaner is designed for cleaning, degassing, and mixing or dispersing samples. The cleaner reportedly displays the set temperature, actual temperature, set time, and time remaining. The cleaners are available in 13 sizes ranging from 0.5 L to 90 L. Accessories include a cooling coil to maintain a low bath temperature, holder baskets with coated handles to minimize noise, and various supports for flasks and beakers. Tovatech LLC, South Orange, NJ.

www.tovatech.com

Circle 126



Capillary GC columns

SGE's forte capillary GC columns are designed to provide high performance with maximum endurance. The company offers the SilGuard integrated guard column feature with most forte BPX5 columns. According to the company, the integrated guard column traps non-volatile material before it reaches the analytical column. SGE, Inc., Austin, TX.

www.sge.com

Circle 129



Detector

Smith Detection's IONSCAN-LS detector is designed to detect and quantitative trace analytes using ion mobility spectrometry. The detector reportedly has two sample introduction methods, thermal desorption from a filter and high performance injection. According to the company, the detector can analyze samples over a concentration range of about three orders of magnitude and is equipped with an autosampler allowing users to run automatic methods that have been preprogrammed into the detector's IM-Station software. Smith Detection, Danbury, CT.

www.smithsdetection.com

Circle 130



Eluent synthesizer

Metrohm-Peak's Metrohm 845 eluent synthesizer is designed to automatically prepare certified GLP-compliant eluents, mobile phases, buffer solutions, standards, and dilutions with precise mixtures and batch-to-batch reproducibility. The instrument reportedly can handle aqueous solutions, acidic or basic buffers, and organic mobile phases from as many as four freely selectable concentrates and one main component. Metrohm-Peak, Inc., Houston, TX.

www.mp-ic.com

Circle 133



Gas chromatograph

PerkinElmer's Clarus 600 series gas chromatograph is designed with an oven that reportedly can cool from 450 °C to 50 °C in approximately 2 min. The gas chromatograph can be used for applications including environmental contract analysis, forensics, petrochemical analysis, and chemical quality-control. PerkinElmer, Wellesley, MA.

www.perkinelmer.com

Circle 131

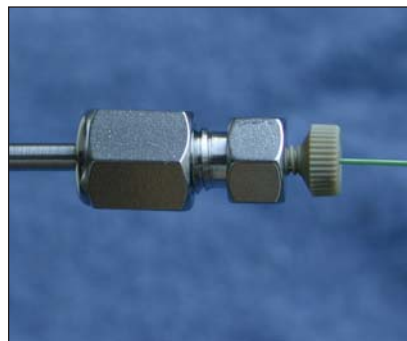


GC-MS software

Thermo Electron's EnviroLab Forms 2.0 and ToxLab Forms 2.0 software is designed to work with the company's GC-MS instruments. The software reportedly allows users to move step-by-step through environmental, food safety, toxicology, and forensic analyses. According to the company, both software packages simplify data review and QC management by flagging out-of-range values for follow-up. Thermo Electron Corporation, Waltham, MA.

www.thermo.com

Circle 134



Chromatography columns

Eksigent's ChromXP 300- μ m i.d. LC columns are designed to operate at high linear flow velocities and to deliver maximum performance on the company's ExpressLC-100 and -800 HPLC systems. The columns are compatible with all capillary LC instruments and are available in C4, C8, and C18 reversed phases, a C8 and C18 embedded polar phase, and a C18 phase for use with highly aqueous mobile phases. Eksigent Technologies, LLC, Livermore, CA.

www.eksigent.com

Circle 132



GC liners

Hamilton's GC liners are designed to provide the highest performance with no loss of the original sample and accurate quantitation of labile-reactive compounds. According to the company, each batch of the deactivated liners is tested, and liners for Agilent and Varian GC systems are available. The liners are supplied in packages of 1, 5, or 25 liners. Hamilton Company, Reno, NV.

www.hamiltoncompany.com

Circle 135



Postcolumn system

The Pinnacle PCX postcolumn derivatization system from Pickering is designed to precisely and selectively separate analytes. The system's pulse-free syringe pump runs only during the injection cycle. According to the company, the instrument works with most brands of HPLC systems and is supported with validated applications to separate complex mixtures and detect a range of compounds with sensitivity, stability, and reproducibility. Pickering Laboratories, Inc., Mountain View, CA.

www.pickeringlabs.com

Circle 136



HPLC columns

INERTSIL ODS-EP columns are designed to provide excellent peak shape, durability, and unique selectivity for both acids and bases. The columns reportedly are highly stable to acidic pH. GL Sciences, Inc., Torrance, CA.

www.inertsil.com

Circle 139

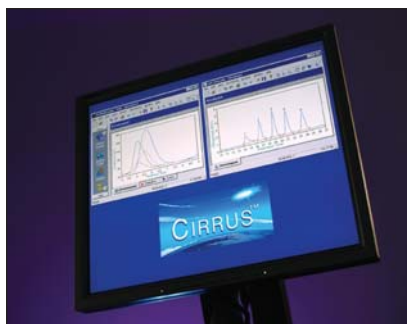


Fluorescence detector

Jasco's model XLC-3020FP fluorescence detector is designed for ultrahigh-pressure LC applications. According to the company, the detector provides an excellent signal-to-noise ratio with stability over the 220-720 nm wavelength range for both excitation and emission and is capable of data acquisitions at frequencies as high as 50 data points/s. The detector reportedly includes advanced optics, holographic concave diffraction gratings, and nonspherical mirrors. Jasco, Inc., Easton, MD.

www.jascoinc.com

Circle 137

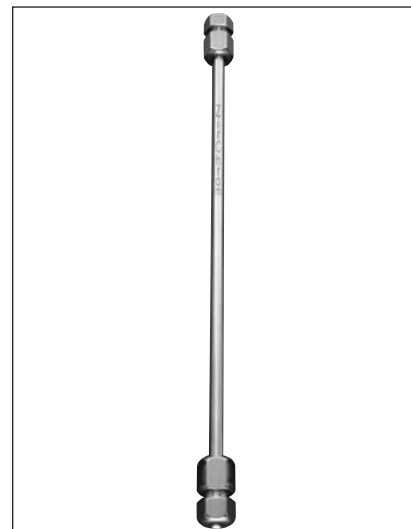


Detector software

Polymer Laboratories' Cirrus version 3 software is based on the company's GPC/Multi Detector software for polymer characterization. The software reportedly features a user interface with easier, more intuitive operation, expanded reporting and reviewing capabilities, and the ability to review all results within a workbook simultaneously. The software reportedly offers procedures for correcting the chromatographic band broadening of peaks. Polymer Laboratories, a Varian, Inc. Company, Amherst, MA.

www.polymerlabs.com

Circle 140



Chiral chromatography products

ZirChrom Separations' ZirChrom-Chiral chiral stationary phases are designed for analytical and preparative-scale HPLC. The phases reportedly incorporate zirconia with Lewis acid-base anchored chiral selectors. According to the company, the synthesis of the phases capitalizes on the presence of Lewis acid sites on the surface of the zirconia to provide a more robust and chemically flexible stationary phase. ZirChrom Separations, Anoka, MN.

www.zirchrom.com

Circle 138



HPLC columns

Supelco's Ascentis HPLC columns are designed with silica and phenyl phases for use in aqueous normal phase or HILIC applications. According to the company, the silica phase is available in a wide variety of dimensions and is scalable from microbore to preparative dimensions. The phenyl phase reportedly provides unique selectivity as well as minimal MS bleed. Supelco, Bellefonte, PA.

www.sigma-aldrich.com

Circle 141