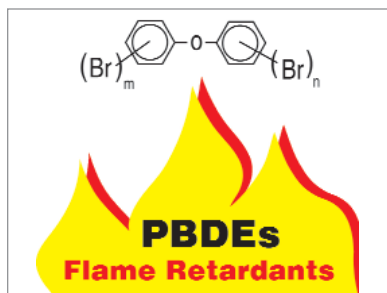


Pitcon Product Showcase

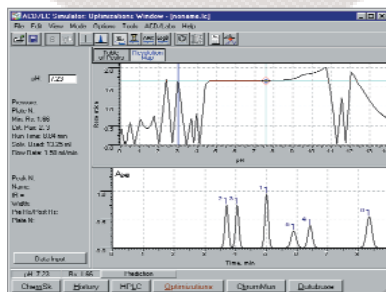
PBDE congeners



AccuStandard offers more than 130 polybrominated diphenyl ether (PBDE) congeners with all levels of bromination, including octas and nonas. The company has synthesized PBDE standards for the US EPA's Hazardous Compound Target Lists and offers more than 30,000 organic and inorganic chemical reference standards. AccuStandard, Inc., New Haven, CT.

Circle 100

LC Simulator



Advanced Chemistry Development offers the ability to predict analyte pKa values before method development with version 8.0 of ACD/LC Simulator. The program allows chromatographers to better select mobile-phase pH for new experiments based upon chemical structures or substructures of ionizable compounds. Advanced Chemistry Development, Inc., Toronto, Canada.

Circle 101

Microcollection/spotting system



Agilent's LC microcollection/spotting system provides a complete software-controlled separation solution with direct spotting on MALDI targets for proteomics applications. The system provides flexibility and efficiency of multidimensional chromatography online through column switching using the Agilent 1100 Series microvalves, or offline by collecting the desired fraction of subsequent dimensions. Agilent Technologies, Santa Clara, CA.

Circle 102

Prep columns



Waters' optimum bed density (OBD) preparative-scale columns are designed to deliver greater peak efficiency, column stability, and column life while maintaining the integrity of separations developed on previous formats. The columns are available in a variety of the company's Xterra and Atlantis chemistries, particle sizes, and column internal diameters. Waters Corporation, Milford, MA.

Circle 103

Evaporative light-scattering detector



Alltech's ESLD 2000ES evaporative light-scattering detector combines universal detection capabilities with enhanced

sensitivity. ELSD offers advanced instrument control and dual-mode operation. Mobile phase is evaporated before detection occurs, eliminating solvent fronts and providing stable baselines with gradients. The instrument can be used as a stand-alone detector or to complement information from UV or MS detectors. Alltech Associates, Inc., Deerfield, IL.

Circle 104

Liquid-handling head



Hamilton's 96 CORE head is designed for use with the company's Microlab STAR liquid-handling workstation. By combining the head with as many as 16 independent pipetting channels on the same workstation and adding the company's Microlab AVS automated vacuum system, users can automate 96-well format solid-phase extraction, plasma-protein precipitation, and liquid-liquid extraction. Hamilton Company, Reno, NV.

Circle 105

Pitcon Product Showcase

Laminar chromatography system



Bionisis' Optimum Performance Laminar Chromatography (OPLC) system uses a planar sorbent bed in a pressurized chamber to separate complex samples. A range of instrumentation and flat columns is provided, including the OSU 50 Purification Unit for HPLC, the OPLC 50 stand-alone unit for offline separation of multiple samples, and the fully automated multiOPLC workstation. Bionisis SA, Le Plessis-Robinson, France.

Circle 106

Laboratory gas generators

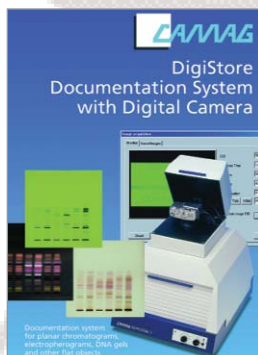


Domnick Hunter offers a full range of laboratory gas generators. Generator options include hydrogen, nitrogen, zero air,

carbon dioxide, free air, and pure air. The generators are designed for quality, reliability, performance, and safety. Domnick Hunter, Inc., Charlotte, NC.

Circle 109

Documentation system

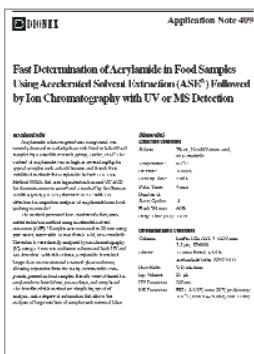


CAMAG offers a digital camera documentation system for GMP/GLP environments. The system can acquire images of TLC

chromatograms and similar flat objects. Images can be annotated, saved, archived, retrieved, and printed. Included in the system are a lighting system for documentation under UV and visible light, and a cabinet cover that is designed to ensure complete exclusion of ambient light. CAMAG Scientific, Inc., Wilmington, NC.

Circle 107

Acrylamide determination



Dionex's application note discusses a method for fast determination of acrylamide in foods using accelerated solvent extraction

followed by IC with either UV or MS. According to the note, UV detection sufficed for most of the analyzed samples, although MS detection offered higher specificity and sensitivity. Dionex Corp., Sunnyvale, CA.

Circle 110

Mobile-phase packaging



CHATA offers packaging for HPLC mobile phases. The CHEM1 NECT packaging technology provides a disposable, closed-system alternative to other HPLC mobile phases. Premixed CHEM1 NECT mobile phases are manufactured to customer specifications using reagent-grade components to ensure equivalent performance. CHEM1 NECT packaging also are offered with stability data to validate long-term consistency. CHATA Biosystems, Fort Collins, CO.

Circle 108

Sample prep and protein analysis system



Gilson's Dimension LC system performs multidimensional separations via SPE with preconcentration and subsequent injection onto analytical or capillary HPLC systems. The system accommodates 1-mL and 3-mL SPE cartridges. It can use a variety of phases including C18, C8, C4, and anion and cation exchange. Typical applications include simplifying complex tryptic digests and identifying trace metabolites and trace contaminants. The system operates as a stand-alone system controlled by a computer-based program. Gilson, Inc., Middleton, WI.

Circle 111

Pititeon Product Showcase

Membrane-based adsorbers



Pall Corporation's Mustang Chromatography membrane-based adsorbers quickly remove high levels of impurities during antisense drug processing. The membrane-based separation devices are designed to provide a tenfold increase in antisense drug production speeds, improve product purity, and eliminate the need for organic solvents. Pall Corporation, New York, NY.

Circle 112

Ion-exchange columns



Tosoh Bioscience's TSK-GEL BioAssistant ion-exchange columns feature a 13- μ m particle in a 10 cm \times 10 mm PEEK housing. The 4000 and 1300 Å pore size of Q and S functionalities, respectively, allow for access and binding kinetics for large biomolecules such as IgG or IgM. Tosoh Bioscience, LLC, Montgomeryville, PA.

Circle 113

Multichannel HPLC



Richard Scientific's Sepmatix FlowControl system enables as many as eight HPLC columns to be used simultaneously from a single HPLC pump. It allows columns of different sizes and chemistries to be run in parallel. The system can be used with any HPLC system. Typical applications are multichannel LC-MS, method development, and chiral column screening. Richard Scientific, Inc., Novato, CA.

Circle 114



ADVANSTAR
COMMUNICATIONS

For Client Review Only. All Rights Reserved. Advanstar Communications Inc. 2003

Trap column for proteomics

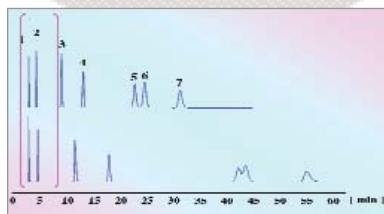


SGE's ProteCol trap column allows pre-concentration of a sample before injection onto an analytical LC column. The

column's square cut and polished PEEKsil tubing ends are designed to minimize dead volume and achieve optimal flow characteristics in external connections. The column is 10 mm in length, with a 150- or 300- μ m i.d. It is equipped with 100 mm length PEEKsil tails of 50 μ m i.d. and 1/32 in. o.d. SGE International Pty. Ltd., Austin, TX.

Circle 115

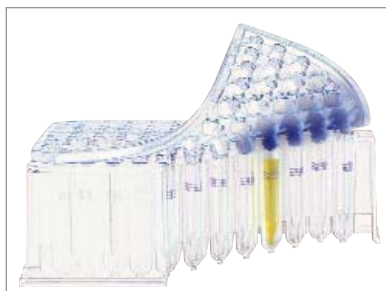
HPLC column



Shiseido's Capcellpak C8 DD column withstands acidic and alkaline conditions (pH 1.5 – 10) and provides low backpressure, even with 3- μ m particles. The column elutes compounds with high hydrophobicity, yet retains polar compounds. JM Science, Inc., Grand Island, NY.

Circle 117

96-well plate system



Sun Sri's Webseal System offers a range of 96-well microtiter plates, containing pre-inserted glass vials and a patented silicone-PTFE-coated sealing mat. The plate is compatible with 96-well autosamplers. The glass vials are made from type-33 borosilicate and come in clear or amber. The mats are made from the high-grade silicone and have a working temperature range of -80°C – 200°C . A cutting tool is available that allows for an individual vial with a silicone plug to be removed. Plate well volumes range from 500 μ L–1.5 mL.

Sun Sri, Duluth, GA.

Circle 116

Pittec Product Showcase

GC 3 GC mass spectrometry system



LECO offers a GC 3 GC FID system that is designed to perform the most complex GC separations for production and quality control in environmental analysis, health sciences analysis, and in the analysis of petroleum products and flavors and fragrances. The system is compatible with Agilent GC detectors. LECO Corporation, St. Joseph, MI.

Circle 118

C18 columns



The hydrophilic endcapped Nucleodur C18 Pyramid C18 phase from Macherey-Nagel is designed for use with mobile-phase systems consisting of as much as 100% water. The company says retention times for three organic acids separated on the phase with purely aqueous mobile phase were nearly unchanged between initial injection and restart after 12 h. The phase is recommended for use with polar compounds. Macherey-Nagel, Düren, Germany.

Circle 119

Silica-based HPLC columns



MicroSolv offers Cogent BHT columns for ballistic high-throughput screening with type C silica-based stationary phases. The columns are

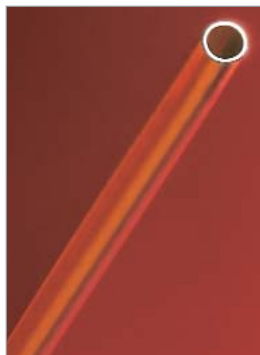
available for use in two flow ranges: 100–1000 mL/min and 500–5000 mL/min. The columns are 4.0 mm long, and the phases have 4.0- μm particles with 100-Å or 300-Å pores. MicroSolv Technology Corporation, Long Branch, NJ.

Circle 120


ADVANSTAR
 COMMUNICATIONS

For Client Review Only. All Rights Reserved. Advansstar Communications Inc. 2003

Light-guiding capillary



Polymicro's light-guiding capillary can be used for applications such as unique detection schemes, UV-initiated reactions without

polyimide removal, chromatographic separations, optical monitoring of fluids, and the study of surface chemistries. Polymicro Technologies, LLC, Phoenix, AZ.

Circle 121

Nanoscale switching valves



Rheodyne offers two nanoscale switching valves. The two-position, six- and ten-port motorized platforms incorporate flow passages of 0.10 mm and provide a 25-nL port-to-port volume. Applications include low-flow and dispersion-sensitive analyses. Rheodyne, LLC, Rohnert Park, CA.

Circle 123

Evaporative light-scattering detector



SEDERE's SEDEX model 85 low-temperature evaporative light-scattering detector for HPLC is designed to provide a sensitivity of

200 pg. The system is controlled by Microsoft Windows-based software. The detector can be used with micro-HPLC, conventional HPLC, and preparative HPLC, as well as for combinatorial chemistry. Four different nebulizers are available with flow rates ranging from 5 mL/min–5 mL/min. SEDERE, Franklin, MA

Circle 122

Pitcon Product Showcase

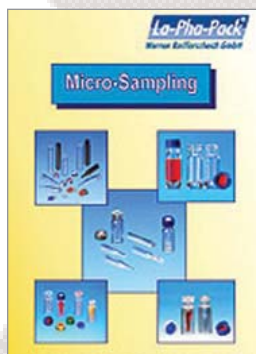
Fluorescence detector



The model FLD-10 fluorescence detector from JMST Systems is designed for use in dynamic flow techniques such as HPLC. The device includes an optical path designed for high-sensitivity detection of weak fluoro-phores and a flow cell with an illuminated volume of 3.0 mL. The detector's optical system uses light sources with available energy at wavelengths of 330–1000 nm. JMST Systems, Boynton Beach, FL.

Circle 124

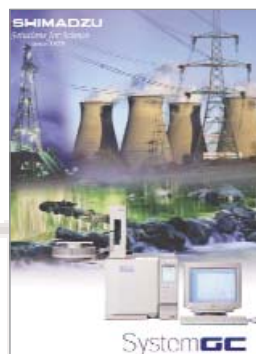
Microsampling brochure



Lab-Chrom-Pack's La Pha Packs brochure is a guide for micro-sampling products. The brochure includes microinserts and microvials for GC and HPLC use. Lab-Chrom-Pack, Tullytown, PA.

Circle 125

Custom GC systems



Shimadzu Scientific offers custom application-specific GC systems in areas such as petro-chemical, health and safety, and gas processing. The fully configured GC systems are designed to provide a complete solution for a laboratory's specific GC needs. Shimadzu Scientific Instruments, Inc., Columbia, MD.

Circle 126

GC columns



Supelco offers Alumina GC capillary PLOT columns, Fast Equity GC capillary columns, and preconditioned GPA packed column sets. The Alumina PLOT columns are designed for fast regeneration following exposure to moisture, and applications include light hydrocarbon and CFC analysis. Equity-1, Equity-2, and Equity-1701 columns are available with a 0.10-mm diameter. Packed column sets meet EPA and ASTM natural gas method performance requirements. Supelco, Inc., Bellefonte, PA.

Circle 127

Lab tables



Table Solutions offers mobile, noise-reducing lab tables for mass spectrometers. The tables have four large casters. The cabinet features sound absorbing foam, rubber antivibrational padding for pumps, and a fan for expelling heat while maintaining a quiet environment. Table Solutions, Lambertville, NJ.

Circle 128

Liquid-handling station

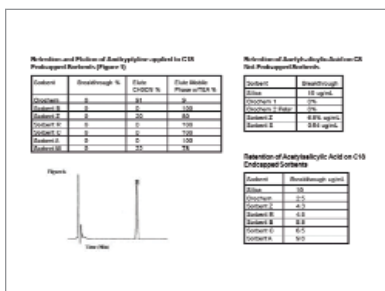


Brinkmann's epMotion 5070 liquid-handling workstation allows pipetting sequences and protocols to be programmed using a mouse and an integrated control panel. An optical sensor system controls the procedures and ensures they are carried out correctly; the system also automatically monitors liquid volumes and types of tubes and pipette tips being used. Brinkmann Instruments, Inc., Westbury, NY.

Circle 129

Pitcon Product Showcase

Sorbents



Orochem's Orpheus packed SPE devices can be used with most manifolds, automated liquid handling systems, and robotic workstations. The sorbents are designed to provide consistent sorbent specificity and extraction efficiency, reproducible lot-to-lot recovery, and very low or no silanol activity. A variety of nonpolar, polar, ion-exchange, and mixed mode phases are available. Orochem Technologies, Inc., Westmont, IL.

Circle 130

HPLC system



The DiscoveryVP HPLC system from Shimadzu Scientific features control options and scalability. The systems are available in analytical and preparative versions. Shimadzu Scientific Instruments, Inc., Columbia, MD.

Circle 131

Anion-exchange column



Hamilton's PRP-X100 anion-exchange HPLC columns are designed for applications such as the speciation of arsenic compounds using isocratic conditions with a phosphate mobile phase. According to the company, the column achieves baseline separation of four arsenic compounds in 11 min without interference. The columns are available in three particle sizes: 3, 5, and 10 μm . The columns come in a variety of column lengths from 50 mm to 250 mm. Hamilton Company, Reno, NV.

Residual solvent analysis



Teledyne Tekmar's 7000HT static headspace system is designed for residual solvent analysis involving DMI. The system achieves sample equilibration temperatures as high as 300 $^{\circ}\text{C}$. Teledyne Tekmar Instruments, Mason, OH.

Circle 133

Sampling system



Smiths Detection's IONSCAN-LS autosampler is a sampling system for routine testing of multiple solution samples during

cleaning validation, testing, and screening procedures for the pharmaceutical industry. The sampler operates on 45–90 s cycles. It allows customization for content uniformity, dissolution testing, and quality control applications. The system uses ion mobility spectrometry and works by selectively ionizing organic compounds and separating them by time of flight. Smiths Detection Life Sciences, Warren, NJ.

Circle 134

Chromatography data system

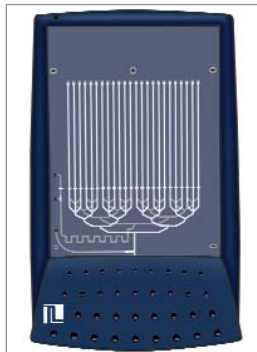


Scientific Software's version 3.1.4 EZChrom Elite chromatography data system features optional instrument control of more than 220 instruments and modules, graphic controls for peak groups and group names, and instrument access for a variety of instruments through the OpenLAB icon XP data acquisition device. The system can be deployed in stand-alone, thin-client, or client-server computing environments. Scientific Software, Inc., Pleasanton, CA.

Circle 135

Pitcon Product Showcase

Micro parallel LC system and cartridges



Nanostream's Veloce system includes instrumentation, software, and replaceable Brio cartridges. The system enables 24 parallel

chromatographic separations and simultaneous, real-time detection by UV absorbance. Brio cartridges incorporate 24 columns, available in varying lengths and stationary phases, for high-throughput analytical applications. Nanostream, Inc., Pasadena, CA.

Circle 136

Nitrogen generator



The Parker Balston model N2-30 self-contained membrane nitrogen generator produces 99% pure nitrogen with pressures as

high as 100 psig. Output from high- and low-pressure compressors is filtered by high-efficiency coalescing filters that remove all contaminants as small as 0.01 μm . Typical applications include nebulizer gas, chemical and solvent evaporation, instrument purge and supply, evaporative light scattering detector use for HPLC, and sparging. Parker Hannifin Corporation, Haverhill, MA.

Circle 137

GC capillary columns



Quadrex's passivation technology used in its iQ GC capillary columns prevents detrimental surface interaction with applied

GC phase coatings. The columns can be used for process GC where routine maintenance is not always available and in hazardous or rugged environments. Quadrex Corporation, Woodbridge, CT.

Circle 138


ADVANSTAR
 COMMUNICATIONS

For Client Review Only. All Rights Reserved. Advanstar Communications Inc. 2003

Syringe pump



Hamilton's PSD/4 syringe pump is designed to perform liquid-handling operations such as dispensing, serial dispensing,

and diluting. Operating on 24 V dc, the pump can be connected in series from a single serial port to form a bank of as many as 16 modules. The syringe's machined body parts include pretapped mounting holes on the top, back, sides, and bottom of each pump. Each pump has a built-in RS232 connector and CAN interface. Hamilton Company, Reno, NV.

Circle 139

Precipitation plate



Waters' Sirocco protein-precipitation plate enables high-throughput in-well protein precipitation of biological samples. This plate contains a filter system, a sealing cap mat, and a valve designed to allow in-well processing, which prevents clogged wells, crosstalk, and leaking during use. Waters Corporation, Milford, MA.

Circle 140

Microplate sample concentrator



Argonaut's SPE dry 96-sample concentrator system evaporates microplate samples by delivering heated gas above and below each

well. According to the company, the system evaporates samples quickly and maintains accurate temperature control at selected settings. The system has simple front-panel controls and removable gas-delivery assemblies and can be adapted for use with 24-, 48-, 96-, and 384-well microplate formats. Argonaut Technologies, Inc., Foster City, CA.

Circle 141

Mass spectrometer



JEOL's AccuTOF time-of-flight mass spectrometer employs an analog-to-digital converter data-acquisition system to achieve a high dynamic range for accurate mass measurement of components at both low and high concentrations. The spectrometer isolates high-resolution mass spectra in complex mixtures and provides molecular weight and fragment ion information for each component. The spectrometer is compatible with Sierra Analytics software for mass spectral and polymer data analysis. JEOL USA, Inc., Peabody, MA.

Circle 142

Pitcon Product Showcase

Elemental analysis



Thermo Electron offers complete instrument software packages to facilitate elemental speciation analyses of liquid

samples for routine and commercial laboratory environments. The X series ICP-MS system can be integrated with other analytical tools. HPLC-ICP-MS and GC-ICP-MS systems typically are used for online species separations. This software has automated control of HPLC and GC accessories using productivity enhancing bidirectional communications. Thermo Electron Corporation, Waltham, MA.

Circle 143

Syringeless filters



Whatman offers the Mini-UniPrep syringeless filters, which are designed to remove particulates from samples being prepared for HPLC. Typical applications include pharmaceutical and environmental samples. Whatman, Inc., Kent, United Kingdom.

Circle 145

Hydrogen generator



Proton's HOGEN hydrogen generators produce 200-psi 99.99991% hydrogen for GC carrier and fuel gases. The model 20 and

40 hydrogen generators provide a pure hydrogen output of as much as 20 and 40 scfh, respectively, using a proton exchange membrane electrolyte system. Proton Energy Systems, Inc., Wallingford, CT.

Circle 144

Refractive index detector



Wyatt's Optilab rEX refractive index (RI) detector is designed to provide 256 times the detection power and as much as 50 times the dynamic range of other RI detectors. The detector has no range or gain settings. According to the company, full sensitivity exists over the entire range. The detector has a flow cell with a total volume of only 7.4 mL, and can measure the absolute refractive index of a solution. The detector also can operate at both below and above ambient temperature, and is compatible with all HPLC systems. Wyatt Technology Corporation, Santa Barbara, CA.

Circle 146

Pitcon Product Showcase

Network headspace sampler



Agilent's G1888 network headspace sampler features an inert sample pathway from sampling needle to transfer line

to prevent analyte degradation or loss. The system can handle analysis of semivolatiles at temperatures as high as 230 °C. Other features include a 70-sample tray, multiheadspace-extraction concentration mode in conjunction with cryofocusing, and power-on self-test and automatic leak testing. Agilent Technologies, Santa Clara, CA.

Circle 147

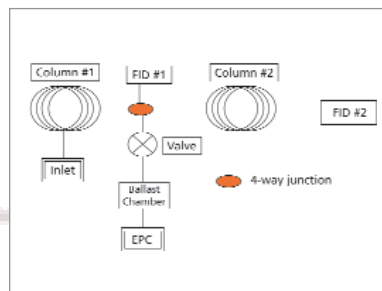
Mass spectrometers



Thermo Electron offers single-quadrupole mass spectrometers. The Finnigan DSQ family comprises different technical configurations and options to suit the requirements of a wide range of analytical and QA/QC laboratories for testing environmental, forensic, food, toxicological, chemical, and petrochemical samples. Thermo Electron Corporation, Waltham, MA.

Circle 148

GC system



Restek's stop-flow GC system is designed for high-speed, high-resolution GC analysis. The system offers programming rates as high as 60 °C/min. According to the company, the system reduces analysis times by 70% or more for pesticides, pharmaceuticals, and other analytes. Kits containing hardware and flow-control equipment for this technique are available. Restek Corporation, Bellefonte, PA.

Circle 149

Temperature controller



Analytical Sales and Products' PowerSelector temperature controller is available in PEEK or stainless steel. It is designed to accommodate needs for automated method development and column compartment stability for resolution enhancement. The microprocessor-based controller has a digital display temperature range. Temperature range is from 10 °C below ambient to 45 °C. The precision of repeatability is ± 0.5 °C and accuracy is ± 1 °C. Analytical Sales and Products, Pompton Plains, NJ.

Circle 150

Liquid-handling workstation



Leap's BalancePAL workstation combines liquid transfers with gravimetric determinations. The station makes dilutions, additions, or withdrawals of liquids from and to capped vials and weighs the sample container before and after each step. The workstation accommodates 2-, 5-, 10-, and 20-mL vials. Sample vial depletion of volatile components also can be measured. Leap Technologies, Carrboro, NC.

Circle 151

LC-MS-MS system



Applied Biosystems' 4000 Q-Trap LC-MS-MS system is a hybrid linear ion-trap mass spectrometer designed for small-molecule drug-metabolism studies in drug discovery and drug development. The system detects and identifies proteins and peptides in proteomics research. It also can be used for identifying and characterizing proteins in proteomics research. Applied Biosystems, Foster City, CA.

Circle 154

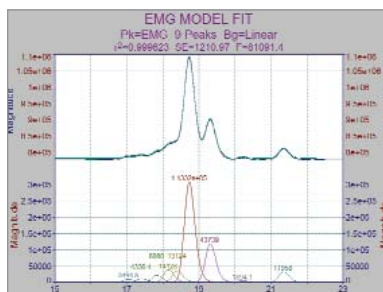
2004 catalog



Analtech's full-color 2004 catalog features the company's TLC Uniplates, as well as a wide range of supporting accessories and equipment for TLC. Included in the catalog are developing tanks, products for sample preparation and sample application, the CycloGraph, the centrifugal chromatography system, rotors for the CycloGraph and Chromatron instruments, and both film and digital documentation systems. Analtech, Inc., Newark, DE.

Circle 152

Data-analysis software

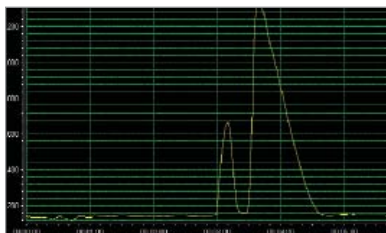


SeaSolve's version 4.12 of its PeakFit peak-analysis software includes an HTML help system. The software also offers three algorithms for deconvolving hidden and partially resolved peaks. The software's nonlinear optimization provides a variety of theoretical and empirical chromatographic models, including the EMG, HVL, and NLC models. SeaSolve Software, Framingham, MA.

Circle 153

Pitcon Product Showcase

Analytical SFC System



Thar offers the SuperDiscovery series of analytical SFC systems. The system provides faster separations due to the low viscosity of the primary mobile phase. The system utilizes a high-pressure fluid pumping module that achieves flow rates of 0.1 g/min–10 g/min at pressures as high as 400 bar. Thar Technologies, Pittsburgh, PA.

Circle 155

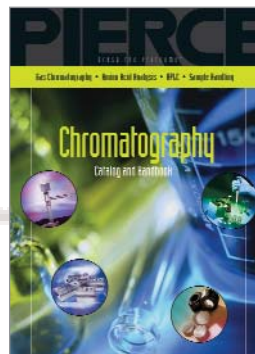
Automated valves



Rheodyne offers MX modules, a family of automated valves for HPLC. Nanoscale MX modules include two-position, six- and ten-port switching valves. These valves include a 10-nL sample injector. The modules include a front-loading semiautomatic sample injector with front-mounted sample loops, a high-speed sample clean up and enrichment feature, a column backflushing function, and MS solvent diversion capability. Rheodyne, LLC, Rohnert Park, CA.

Circle 156

Chromatography catalog



Pierce's 87-page chromatography catalog and handbook provides technical information, protocols and ordering information for GC, HPLC, amino-acid analysis, and sample-handling products. Included in the catalog is a "Derivatization Reagents for Drugs of Abuse" chart and a "Derivatization Reagents for Specific Functional Groups" table. Pierce Biotechnology, Inc., Rockford, IL.

Circle 157


ADVANSTAR
 COMMUNICATIONS

For Client Review Only. All Rights Reserved. Advanstar Communications Inc. 2003

Post-column derivatization system

Pickering Laboratories offers the Hyperion postcolumn derivatization system. It works with all brands of HPLC systems and can be configured to separate complex mixtures and detect a wide range of compounds. The system features an automatic piston wash, automatic flush cycle, and PC software control that is network enabled. Pickering Laboratories, Mountain View, CA.

Circle 158

Headspace sampler



PerkinElmer's TurboMatrix headspace sampling system for GC incorporates a built-in trap. The system is designed to extract analytes from water and other sample matrices. PerkinElmer Life and Analytical Sciences, Shelton, CT.

Circle 159

Glass syringes



National Scientific offers an expanded range of Target precision glass syringes for both GC and HPLC applications. The syringes are manufactured with 33-borosilicate Duran glass barrels. They feature chromium-plated plungers that are designed to help eliminate ion leaching. National Scientific, Duluth, GA.

Circle 160

Pesticide analysis in foods



A 15-page report from Gerstel describes the automated analysis of pesticides in foods including vegetables, fruits, and baby foods.

The report describes analyses performed using the company's Twister stir-bar sorptive extraction device and GC-MS. Elucidation and identification were performed automatically using the Agilent RTL library for pesticides. Quantification was performed by standard addition or isotope dilution. Gerstel, Baltimore, MD.

Circle 161

Pittec Product Showcase

Triple detector array



Viscotek's triple detector array for GPC-SEC separations are designed for characterizing natural and synthetic polymers and proteins. The array includes a concentration detector, viscometer, and light-scattering detector acting in concert. Viscotek, Houston, TX.

Circle 162

HPLC detectors



BUCK Scientific's BLC series of isocratic and gradient HPLC systems now has a photodiode array detector for research, and a conductivity detector for IC work. BUCK Scientific, East Norwalk, CT.

Circle 163

SFC chiral analysis system



Jasco offers a fully integrated SFC system with circular dichroism detector that is optimized for high-sensitivity analysis of chiral compounds. The system provides delivery of supercritical fluids at low flow rates. The system comprises integrated components of modular LC-2000 HPLC system with the addition of an SFC-SFE carbon dioxide pump and back-pressure regulator. The detector can simultaneously determine both circular dichroism and UV absorption of the sample in the same cell. Jasco, Inc., Easton, MD.

Circle 164

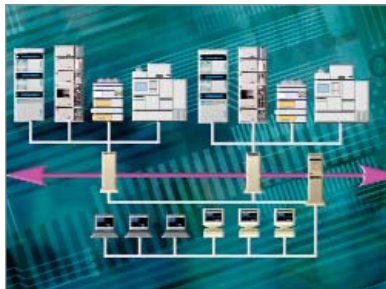
GC column oven



Antek's 3600 microwave GC column oven heats only the columns and not the surrounding air and oven walls. Users reportedly can heat columns at a rate of 6 °C/s and cool them as quickly as 240 °C/min. The device is available in single- and dual-oven models. Antek Instruments, Inc., Houston, TX.

Circle 165

Chromatography data system



Hitachi's LaChrom Elite HPLC with EZChrom Elite client-server software offers regulatory compliance for electronic record keeping and can be scaled from stand-alone to client-server configurations. The system is designed for large-scale chromatography operation and enables network access of all instruments via PC clients and multiple-user operation-security management. Hitachi High Technologies America Life Sciences Division, San Jose, CA.

Circle 166

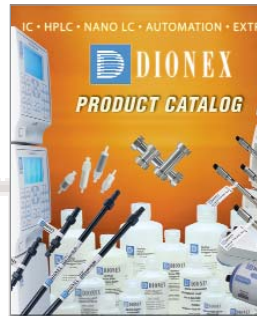
Front-end automation system



CTC Analytics' PAL HTX front-end automation system features an extended x axis of 120 cm. The company reports that the system enables users to store as many as 24 shallow- or deep-well microplates at temperatures ranging from 4 °C to 40 °C before LC-MS analyses. The device also can be used as a GC autosampler. CTC Analytics AG, Zwingen, Switzerland.

Circle 167

Analytical products catalog

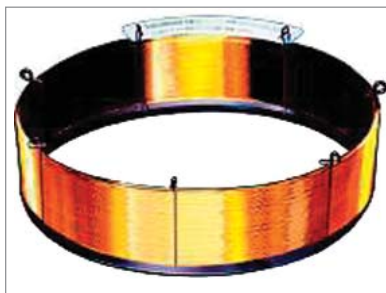


Dionex's analytical products catalog is available on CD-ROM. Products discussed include consumables and

accessories for use with the company's chromatography systems. Adobe Acrobat Reader, Internet Explorer 5.5, and Flash Player are required to navigate the catalog and can be downloaded from the disk. Dionex Corp., Sunnyvale, CA.

Circle 168

Capillary columns



VICI Valco Instruments offers ValcoPLOT HayeSep capillary columns. The capillary PLOT columns are designed to have retention characteristics identical to HayeSep packed columns. According to the company, the columns are 100% bonded, have wide-range polarity, are faster than micro-packed columns, and are water tolerant. VICI Valco Instruments Co. Inc., Houston, TX.

Circle 169

Pitcon Product Showcase

Laboratory gas brochure



A brochure from Airgas describes the company's BIP specialty gas cylinders with built-in purifiers.

According to the brochure, the purifiers eliminate the

need for external purifiers and increase the amount of usable argon, helium, or nitrogen gas per cylinder.

Airgas, Inc., Radnor, PA.

Circle 170

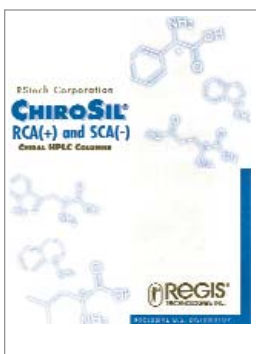
Electrochemical system



ESA's DiscovArray electrochemical system can be used to expand the utility of mass spectrometers by ionizing difficult-to-analyze compounds before MS analysis. The oxidation and reduction reactions performed by the system can be useful in handling poorly ionizing compounds. The system is designed to be compatible with the chromatographic conditions used in LC-MS. ESA, Inc., Chelmsford, MA.

Circle 171

Chiral HPLC columns



A brochure from Regis Technologies discusses the company's ChiroSil RCA(1) and SCA(2) chiral stationary phases, which are available in analytical

and preparative columns. According to the publication, the covalently bonded 18-crown ether phases have universal solvent compatibility and enable inversion of elution order. Regis Technologies, Inc., Morton Grove, IL.

Circle 172

Autosampler



The Metrohm-Spark Triathlon autosampler from Metrohm-Peak has a vial-height sensor that enables constant

penetration depth of sampling tubing regardless of vial height. The autosampler accommodates standard 1- and 5-mL vials and provides injection volumes ranging from 1 μ L to 1 mL. Applications include agricultural, food and beverage, petrochemical, and pharmaceutical analyses. Metrohm-Peak, Inc., Houston, TX.

Circle 173

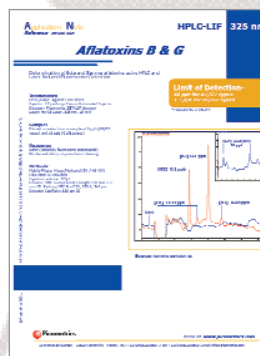
Plate cap mat and heating block



MicroLiter Analytical Supplies' plate cap mat and anodized aluminum heating block are designed for use with the company's plate-sampling system. The accessories enable users to maintain a 96-well plate format while moving glass inserts from the carrier plate to the heating plate. The cap mats are available with insert sample capacities ranging from 200 mL to 2.2 mL. MicroLiter Analytical Supplies, Suwanee, GA.

Circle 174

Aflatoxin detection



Picometrics' application note discusses determination of aflatoxins using HPLC with laser-induced fluorescence detection.

The note describes the separation of a 120-mL sample using a 150 mm \times 3 mm reversed-phase column, a methanol-water mobile phase, and the company's ZetaLIF detector with a helium-cadmium laser at 325 nm.

Picometrics, Ramonville, France.

Circle 175

Corporate booklet



LECO's full-color corporate booklet briefly describes the company's organic and inorganic analytical determina-

tors, glow-discharge spectroscopy products, metallographic and optical equipment, time-of-flight mass spectrometers, and consumables. LECO Corporation, St. Joseph, MI.

Circle 176

ADVANSTAR

 COMMUNICATIONS

For Client Review Only. All Rights Reserved. Advanstar Communications Inc. 2003