

### Software

Waters' Analytical Workflow Manager Software 1.4.7 is designed to allow scientists in analytical laboratories to track and accelerate order processing using an electronic workflow and storage management function. The software administers the workflow of the order-process cycle from capturing analytical requests, through instrumental measurements and result analysis, to long-term data storage. Waters, Milford, MA.

[www.waters.com](http://www.waters.com)

Circle 100



### Process-development columns

Tosoh's ToyoScreen process-development columns feature prepacked Toyopearl resins. The columns can be used for resin screening, process-optimization experiments, or microgram-amount purifications. They are offered in hydrophobic interaction, affinity, and ion-exchange chemistries in 1- and 5-mL formats. Tosoh Bioscience, LLC, Montgomeryville, PA.

[www.tosohbioscience.com](http://www.tosohbioscience.com)

Circle 103



### Biphenyl HPLC phase

Restek's Allure biphenyl HPLC stationary phase is designed to offer a p-p separation mechanism that enhances selectivity for unsaturated compounds with multiple bonds in chains, ring structures, or functional groups. According to the company, with saturated structures and functional groups, the phase exhibits retention and selectivity similar to a C18 phase, but superior to phenyl phases. Restek Corporation, Bellefonte, PA.

[www.restek.com](http://www.restek.com)

Circle 101



### SFC-MS system

Thar offers its SuperDiscovery SFC-MS system, a combination of the company's SFC system with Waters' Micromass ZQ mass detector. The unit features a complete integration of SFC control embedded in Waters MassLynx software. Thar Technologies, Inc., Pittsburgh, PA.

[www.thartech.com](http://www.thartech.com)

Circle 104



### Polymer analysis

Viscotek's flow injection polymer analysis (FIPA) technique is designed to measure average molecular weight and intrinsic viscosity in 3–5 min, which is suitable for high throughput screening. According to the company, a FIPA system consists of a pump, an injector, a FIPA column, and the company's Triple Detector Array detection system. The system reportedly can measure polymer concentrations, molecular weight, and intrinsic viscosity of a solution or emulsion reactor sample in less than 5 min. Viscotek, Houston, TX.

[www.viscotek.com](http://www.viscotek.com)

Circle 102



### HPLC columns

Thermo Electron's Hypersil GOLD columns are designed for the pharmaceutical industry. According to the company, the C8 columns offer increased analysis speed, the CN columns are packed in reversed-phase solvents, and the PFP columns offer selective analyses of chlorinated and fluorinated compounds. The columns are available in a 5- $\mu$ m particle size with lengths of 20–250 mm and inner diameters of 2.1–4.6 mm. Thermo Electron Corporation, Waltham, MA.

[www.thermo.com](http://www.thermo.com)

Circle 105



### Postcolumn system

The Pinnacle PCX postcolumn derivatization system from Pickering is designed to precisely and selectively separate analytes. The system's pulse-free syringe pump runs only during the injection cycle. According to the company, the instrument works with most brands of HPLC systems and is supported with validated applications to separate complex mixtures and detect a range of compounds with sensitivity, stability, and reproducibility. Pickering Laboratories, Inc., Mountain View, CA.

[www.pickeringlabs.com](http://www.pickeringlabs.com)

Circle 106



### Viscometer

Wyatt's ViscoStar viscometer is an on-line chromatography detector for determining specific and intrinsic viscosities. The instrument includes a software-based pulse-dampening correction algorithm and temperature control for temperatures ranging from 4 °C to 60 °C. The system is compatible with most HPLC systems and comes standard with 18-bit A/D resolution, Ethernet, USB communications, and an LCD-based user interface. Wyatt Technology Corporation, Santa Barbara, CA.

[www.wyatt.com](http://www.wyatt.com)

Circle 109



### GC columns

Supelco's SLB capillary GC columns are designed for trace analyses. According to the company, the columns incorporate a combination of advances in polymer synthesis and proprietary surface deactivation chemistry that provides better signal-to-noise ratios, cleaner mass spectra, and reduced detector contamination. Supelco, Bellefonte, PA.

[www.sigma-aldrich.com/supelco](http://www.sigma-aldrich.com/supelco)

Circle 107



### Preparative SFC system

Mettler-Toledo's MultiGram III Berger preparative SFC system is designed to meet the growing demand for higher sample throughput for chiral and achiral drug purification applications. According to the company, the system provides higher flow rates and the ability to accommodate an expanded range of high-capacity preparative columns. Purified samples are recovered in small volumes of organic solvents. The instrument reportedly offers sample output of 10 g/h or more per compound. Mettler-Toledo AutoChem, Inc., Columbia, MD.

[www.mt.com/autochem](http://www.mt.com/autochem)

Circle 110



### Recycling program and packaging

MicroLiter offers a recycling program and packaging for closures and inserts. The packaging is designed to store and maintain consumable supplies. The top of the pack can be cut to dispense like a coin purse, or it can be installed on the company's benchtop dispenser. Users can return empty containers to the company using a company-provided UPS return service label so that the containers can be used on their next order. MicroLiter Analytical Supplies, Inc., Suwanee, GA.

[www.microliter.com](http://www.microliter.com)

Circle 108



### Preparative SFC system

Novasep Process' Supersep Lab 30-50 automated preparative SFC system features automated carbon dioxide recycling, cosolvent gradient, fraction collection, and cyclone separators for quantitative recovery of purified products, such as enantiomers, natural compounds, or complex synthetic chemicals. An automated Clean-In-Place feature reportedly enables quick multigram to hundreds of grams purification of multiple intermediates and drug candidates. Novasep Inc., Boothwyn, PA.

[www.novasep.com](http://www.novasep.com)

Circle 111



### Silicone septa

Lab Chrom Pack's UltraClean Pharma-Fix silicone-PTFE septa are designed for GC and HS analysis. The septa are laminated with PTFE in the sample contact area, and the rubber edge covering the vial rim is unlaminated. The septa have a temperature resistance from 60 °C to 200 °C and are offered in a 20-mm size. Lab Chrom Pack, Tullytown, PA.

[www.labchrompack.com](http://www.labchrompack.com)

Circle 112



### Pyrolysis systems

CDS Analytical's 5000 series pyrolysis systems are designed to analyze organic solids and polymer additives by GC, GC-MS, or FTIR. According to the company, the systems are programmable in 1 °C increments up to 1400 °C and allow eight-step programming for each sample run. Optional accessories include a built-in trapping system for pyrolysis in air measurements, easy-loading sample probes, an FTIR interface, and a polymer identification library. CDS Analytical, Inc., Oxford, PA.

[www.cdsanalytical.com](http://www.cdsanalytical.com)

Circle 115



### Evaporative light-scattering detector

The Gilson prepELS evaporative light scattering detector features a static splitting system that can accommodate flow rates as high as 75 mL/min. According to the company, the instrument can be used with sample masses as high as 5 mg without driving the signal off scale. The detector reportedly can detect low-nanogram analyte levels, and a filtering feature is designed to enable the removal of baseline noise without affecting peak height or shape. The detector can be added as the primary or additional detector to any HPLC system. Gilson, Inc., Middleton, WI.

[www.gilson.com](http://www.gilson.com)

Circle 113



### Autosampler vial kits

Autosampler vial kits containing vials and closures from National Scientific are designed for use with autosamplers for analytical and semipreparative chromatography. Each kit comes with a certificate of analysis. National Scientific Company, Duluth, GA.

[www.nationalscientific.com](http://www.nationalscientific.com)

Circle 116



### Derivatization reagent

A derivatization reagent from Regis Technologies, 3 N hydrochloric acid in butanol, is used for newborn metabolic screening by tandem MS. According to the company, production under cGMP protocols ensures lot-to-lot consistency. The reagent is available in a variety of packaging types. Regis Technologies, Inc., Morton Grove, IL.

[www.registech.com](http://www.registech.com)

Circle 114



### Gas chromatograph

Shimadzu's GC-2014 gas chromatograph is designed for capillary to packed-column analysis applications. According to the company, The system includes automatic and manual flow or pressure control, a keypad for setting flow rates, an LCD screen that enables users to monitor flow rate and column inlet pressure, a detector control system optimized for FID and TCD detectors, and standard autoignition and relight features. Shimadzu Scientific Instruments, Inc., Columbia, MD.

[www.ssi.shimadzu.com](http://www.ssi.shimadzu.com)

Circle 117





### Monitors

Whatman's microbiological monitors are designed to be single-use presterilized filtering units designed that reduce liquid sample preparation time by eliminating the need for flaming or sterilization. Each monitor consists of a measured filter funnel, membrane, removable lid, and plug. According to the company, the membranes reportedly convert to a Petri dish after sample application and are compatible with a range of the company's media. Whatman, Florham Park, NJ.

[www.whatman.com](http://www.whatman.com)

Circle 118



### HPLC system

Eksigent's NanoLC-1D Plus HPLC system is designed for proteomics and biomarker discovery. The system reportedly has high peptide detection sensitivity, a dedicated rapid sample-loading pump, and sample loading at high flow rates. According to the company, the pump and flow controller operate at pressures as high as 5550 psi for higher resolution in nanobore columns. The system's flow meter is designed to improve flow precision for a wider variety of mobile phases. Eksigent Technologies, LLC, Livermore, CA.

[www.eksigent.com](http://www.eksigent.com)

Circle 121



### SPE materials

Polymer Laboratories' StratoSpheres polymeric solid-phase extraction (SPE) materials are designed for removing charged and uncharged metal species from a variety of organic solvents and analytical mixtures. The macroporous-based materials reportedly offer a high loading compared with conventional functionalized silica SPE media and are compatible with polar, nonpolar, protic, and aprotic solvents. Polymer Laboratories, Inc., Amherst, MA.

[www.polymerlabs.com](http://www.polymerlabs.com)

Circle 119



### Ferrules and nuts

SGE's SilTite metal ferrules for fused-silica GC columns are designed to provide a leak-free seal at the GC-MS interface. The ferrules reportedly reduce background noise and make mass-spectral identification easier at lower levels. According to the company, the ferrule and the nut have the same thermal expansion coefficient, thereby eliminating the need to retighten the ferrule after initial temperature cycles. SGE, Inc., Austin, TX.

[www.sge.com](http://www.sge.com)

Circle 122



### Mass spectrometer

Waters' Micromass Quattro Premier XE mass spectrometer is a compact, benchtop, tandem quadrupole mass spectrometer with a mass range of 2–3000 amu configured for atmospheric pressure ionization LC-MS-MS. The instrument features the WHISPER dynolite photomultiplier detector that reportedly reduces detector noise for both positive and negative ion modes and improves sensitivity in negative ion mode. Waters Corporation, Milford, MA.

[www.waters.com](http://www.waters.com)

Circle 120



### On-line training modules

Agilent's on-line technical training modules are designed to give researchers the knowledge and the ability to improve the performance of GC or GC-MS instruments. The on-demand, live learning modules are accessible on the Internet. According to the company, the training helps chromatographers enhance their existing skills, obtain training on new instruments, and fulfill industry training requirements. Agilent Technologies, Inc., Palo Alto, CA.

[www.agilent.com/chem](http://www.agilent.com/chem)

Circle 123



### HPLC columns

Phenomenex's Onyx C18 semipreparative 100 mm x 10 mm monolithic silica HPLC columns are designed for high-throughput purifications where impure samples and abusive ballistic gradients are encountered. According to the company, the columns' low back pressures and flow characteristics allow for 5–35 mL/min flow rates with 10–20 mg loading capacities and for injections of dirty or viscous samples. Phenomenex, Inc., Torrance, CA.

[www.phenomenex.com](http://www.phenomenex.com)

Circle 124



### Liquid handling system

Gilson's GX-281 liquid handling system is designed with a large-bed capacity and an integrated bar-code scanner for prerun rack and bed verification. According to the company, the Z-arm can accommodate vessels with a height of greater than 200 mm., and the system can accommodate injection volumes as large as 25 mL. The system's solvent delivery system reportedly provides a dynamic range of 5  $\mu$ L to 100 mL and flow rates of 1  $\mu$ L/min to 25 mL/min. Gilson, Inc., Middleton, WI.

[www.gilson.com](http://www.gilson.com)

Circle 127



### Specialty gases

Airgas offers specialty gases for flame ionization and thermal conductivity chromatography. The company operates its own blending facilities as well as maintains a national network of blending knowledge to ensure accurate, consistent production. The chromatography gases include Zero Grade and UHP helium, UHP and Ultra Carrier Grades of argon, nitrogen, zero air, and hydrogen. Airgas, Inc., Radnor, PA.

[www.airgas.com](http://www.airgas.com)

Circle 125



### Ion-trap MS system

Bruker Daltonics' HCTUltra PTM discovery system is based on an ion-trap mass spectrometer. According to the company, the system's electron transfer dissociation fragmentation technique provides complete amino acid series down to immonium ion masses, without the low-mass cut-off encountered in ion-trap MS-MS. The system reportedly can be used for de novo sequencing. Bruker Daltonics Inc., Billerica, MA.

[www.bruker-biosciences.com](http://www.bruker-biosciences.com)

Circle 128



### Automated evaporator-concentrator

The DryVap automated concentrator system from Horizon is designed to combine Kuderna-Danish concentration, nitrogen blow down, and drying of organic solvents into one step with precision and accuracy for GC and GC-MS analyses. According to the company, the bench-top system uses a separation membrane that automatically dries solvents in seconds and that concentrates solvent volumes of 2–200 mL to precisely 0.9 mL in less than 30 min. Horizon Technology, Inc., Salem, NH.

[www.horizontechnic.com](http://www.horizontechnic.com)

Circle 126



### Nanoflow LC system

LC Packings, a Dionex company, offers the UltiMate 3000 nanoflow LC system, designed for nanoflow performance. The system features a dual-gradient micropump, UV detection, thermostated column switching, and microautosampling in one tower. The instrument is optimized for use with separation columns with internal diameters of 50  $\mu$ m and greater, including high-speed, high-resolution monolithic columns. Dionex Corporation, Sunnyvale, CA.

[www.dionex.com](http://www.dionex.com)

Circle 129



### Vials, caps, and septa

Supelco's Econo-line of vials, caps, and septa is designed for many autosampler models. According to the company, the vials are made of Schott glass, which is chemically resistant to acidic and basic solutions. The vials are available in volumes of 0.3–60 mL, clear and amber glass, and convenience kits. Supelco, Bellefonte, PA.

[www.sigma-aldrich.com/supelco/](http://www.sigma-aldrich.com/supelco/)

Circle 130



### Chiral LC detectors

Jasco's OR-2090 optical rotation detector and CD-2095 circular dichroism detector are designed for chiral LC. The optical rotation detector reportedly can match the wavelength with the optical rotation of the eluted compound, uses a high-intensity Hg-Xe light source, and has a 350–900 nm wavelength range. The circular dichroism detector reportedly allows nanogram-level detection of enantiomers. Jasco, Inc., Easton, MD.

[www.jascoinc.com](http://www.jascoinc.com)

Circle 133



### Silica

Phenomenex's Gemini C18 silica is designed with a small particle size for high efficiency. According to the company, the 3- $\mu$ m silica is stable in the pH 1–12 range. The silica is available in a variety of formats from capillary to preparative. Phenomenex, Inc., Torrance, CA.

[www.phenomenex.com](http://www.phenomenex.com)

Circle 131



### Gas analyzer system

Arnel's model 4087 transformer oil gas analyzer system is designed to meet the scope of ASTM Method D3612. The system includes a headspace sampler and a gas chromatograph. According to the company, the headspace sampler provides automated integration and includes passivated tubing. Arnel Inc., Parlin, NJ.

[www.arnelinc.com](http://www.arnelinc.com)

Circle 134

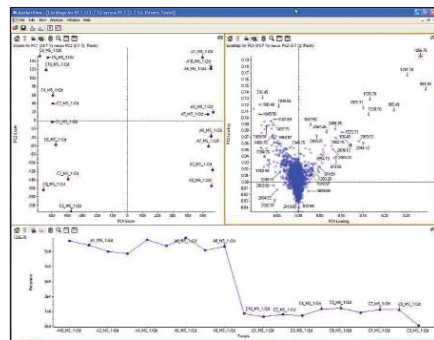


### Ion chromatograph

Metrohm-Peak's Metrohm 861 Advanced Compact ion chromatograph is designed with a CO<sub>2</sub> suppressor feature to eliminate water dip and system peak in analyses and increase the linearity range. Chromatograph components include an MSM II suppressor, a column oven, a conductivity detector, an injection valve, a serial dual piston pump, and a PEEK flow path. Metrohm-Peak, Inc., Houston, TX.

[www.mp-ic.com](http://www.mp-ic.com)

Circle 135



### Software

Applied Biosystems' MarkerView software is designed for metabolomics and biomarker profiling analysis. The software reportedly allows researchers to analyze MS data sets for changes in protein, peptide, and metabolic patterns resulting from disease, drug treatment, or drug toxicity. The software is compatible with all Applied Biosystems and MDS SCIEX mass spectrometers, including both MALDI and ESI instruments. Applied Biosystems, Foster City, CA.

[www.appliedbiosystems.com](http://www.appliedbiosystems.com)

Circle 132



### Protein removal system

The Agilent High-Capacity Multiple Affinity Removal system is designed to allow purification of approximately twice the volume of human blood serum per sample compared with other protein removal systems. According to the company, the system can detect and identify low-abundance proteins that may serve as markers for a wide range of diseases. The system is available in HPLC column or spin cartridge formats. Agilent Technologies, Inc., Palo Alto, CA.

[www.agilent.com/chem](http://www.agilent.com/chem)

Circle 136





### Documentation system

CAMAG's DigiStore digital camera documentation system acquires images of TLC chromatograms and similar flat objects. The images reportedly can be annotated, saved, archived, retrieved, and printed. The company's WinCATS software controls the system. According to the company, the system can be qualified for a GMP environment with 21CFR Rule 11 compliance. CAMAG Scientific, Inc., Wilmington, NC.

[www.camagusa.com](http://www.camagusa.com)

Circle 137



### Prepackaged HPLC mobile phases

CHATA's CHEM+NECT prepackaged solutions are designed to be an alternative to traditional HPLC mobile phase preparation. According to the company, GMP procedures are used to prepare standard or custom-blended chemistry solutions according to customer specifications. The company's patented, flexible film packaging system ensures sterile, filtered, and degassed solutions. The packaging system uses reagent-grade components that can be connected to any HPLC system. CHATA Biosystems, Fort Collins, CO.

[www.chatasolutions.com](http://www.chatasolutions.com)

Circle 140



### Headspace sampler

EST Analytical's Markelov HS 9000 headspace sampler is designed with a dual needle and horizontal rotary mixing. The dual needle reportedly offers increased sensitivity because it continually sweeps the headspace for concentration on the optional adsorbent trap or at the analytical column. The sampler also features the ability to make both time-based injections and fixed-loop injections within the same schedule, a 90-position carousel, a constant heat mode, and a temperature range that extends to 300 °C. EST Analytical, Fairfield, CT.

[www.estanalytical.com](http://www.estanalytical.com)

Circle 138



### LC systems

Dionex's Summit x2 dual-gradient HPLC and LC-MS systems are designed for standard applications and advanced chromatographic techniques that require two pumps. The systems consists of two independent low-pressure gradient pumps, a solvent rack that incorporates the degasser channels for both pumps, a built-in two-position 10-port thermostated valve in the column compartment, and an autosampler. The company's Chromeleon data-management software is included with both systems. Dionex Corporation, Sunnyvale, CA.

[www.dionex.com](http://www.dionex.com)

Circle 141



### Chromatography refrigerators

Marvel's chromatography refrigerators feature access ports and precise temperature control. The refrigerators are available in under-the-counter and larger one- or two-door models. Model 6CHR features 173 L of space, a clear tempered glass door, a single-access port, and a microprocessor-based temperature control system. Models 21CHR and 42CHR provide 595 L and 1218 L of chamber space, respectively, and feature vapor-proof duplex outlets. Marvel Scientific, Richmond, IN.

[www.marvelscientific.com](http://www.marvelscientific.com)

Circle 139



### HPLC pumps

Alltech's model 301 and 426 pumps are designed for isocratic HPLC applications. The pumps reportedly feature a pulse dampener and rapid refill for pulse-free operation, a self-flushing pump head for longer seal life, and an automatic prime-purge system for easy priming. The model 426 pump provides adjustable upper and lower pressure limits and pressure monitoring on the display. Alltech Grace, Deerfield, IL.

[www.alltechweb.com](http://www.alltechweb.com)

Circle 142



### Reagent bottle top dispenser

Hamilton's SofTop Quik dispenser is an adjustable volume bottle top dispenser that is designed ergonomically. The instrument is constructed with ceramic and calibrated precision glass for chemical compatibility and precision. The dispenser is available in six volumes ranging from 0.2 to 60 mL. Hamilton Company, Reno, NV.

[www.hamiltoncompany.com](http://www.hamiltoncompany.com)

Circle 143



### Dry vacuum pump

The model XDS35i dry vacuum pump from BOC Edwards is designed to provide a vacuum completely free of lubricants. The bearings are isolated from the vacuum environment by a bearing shield. There are no bearings, grease, or oil under the vacuum. According to the company, the instrument has a constant pumping speed of 35 m<sup>3</sup>/h or 21 cfm on either 50- or 60-Hz frequencies. BOC Edwards, Wilmington, MA.

[www.bocedwards.com](http://www.bocedwards.com)

Circle 146



### Phenyl phase

Kromasil has developed a phenyl phase that is wettable and compatible with 100% aqueous mobile phases. Reportedly, Kromasil Phenyl has a unique selectivity for aromatic compounds, because of a possibility for interactions between the phenyl bonded phase and the solute. The phase shows a high chemical stability, which makes it possible to run chromatography in the pH range of 2 to 9. Eka Chemicals, Dobbs Ferry, NY.

[www.eka.com](http://www.eka.com)

Circle 144



### Universal temperature control unit

The 24V universal control unit from Analytical Sales is designed to provide versatile and reliable control for the company's HPLC column heaters and coolers. The RS232 external control is standard, and dual remote preset temperatures can be programmed easily. The PTC-050CS control unit is designed to comply with the electromagnetic emission standards of the EU Directive, U.S. standards, and Canadian standards so the heaters and coolers to be used with full compliance and safety throughout the world. Analytical Sales and Services, Inc., Pompton Plains, NJ.

[www.analytical-sales.com](http://www.analytical-sales.com)

Circle 147



### MS system

JEOL's AccuTOF-DARTMS system can analyze solid, liquid, and gaseous samples at atmospheric pressure in real time. The instrument does not require solvents or sample preparation and can analyze samples directly on surfaces such as concrete, currency, food, pills, and clothing. It is designed to make MS more accessible for a wide range of applications, including homeland security, forensics, drug development, healthcare, and toxicology. JEOL-USA, Inc., Peabody, MA.

[www.jeol.com](http://www.jeol.com)

Circle 145



### LC-MS system

Shimadzu's LCMS-2010EV LC-MS system is designed for a range of applications in the pharmaceutical, educational, and environmental fields. According to the company, the system incorporates an ion source that uses an additional drying gas at the inlet of the capillary to increase sensitivity and to control solvent adduct formation. The system reportedly features a metal capillary electrospray probe, revised ion optics, and microbore compatibility for ESI. Shimadzu Scientific Instruments, Inc., Columbia, MD.

[www.shimadzu.com](http://www.shimadzu.com)

Circle 148





### ***Ion chromatography system***

Dionex's ICS-3000 Reagent-Free ion chromatography system is designed to increase productivity and overall system performance as much as 10-fold. The system can be upgraded to perform dual analyses without increasing the system footprint or requiring a second autosampler. The system's chemically inert flow path is designed to withstand pH extremes and protect samples from metal contamination. A touchscreen tablet PC mounted on a movable arm provides system control. Dionex Corporation, Sunnyvale, CA.

[www.dionex.com](http://www.dionex.com)

Circle 149



### ***Generators***

domnick hunter's Zero Air generators are designed to produce a continuous flow of clean, dry air with a residual methane content of less than 0.1 ppm. According to the company, an interchangeable top panel allows for the direct mounting of the company's hydrogen generator for GC—flame ionization, flame photometric, and nitrogen—phosphorus detection applications. Six models are available with a flow rate range of 1.0–20 L/min. domnick hunter, Inc., Charlotte, NC.

[www.domnickhunter.com](http://www.domnickhunter.com)

Circle 151



### ***Method development system***

Cohesive Technologies' model TLX-1MD turbulent flow chromatography (TurboFlow) sample preparation method development system is designed to automatically screen multiple columns and mobile-phase conditions. The system reportedly allows researchers to run multiple methods unattended, overnight. The system can be used to perform both turbulent flow chromatography and HPLC. Cohesive Technologies, Inc., Franklin, MA.

[www.cohesivetech.com](http://www.cohesivetech.com)

Circle 150



### ***Carbon dioxide suppressor***

Metrohm-Peak's CO<sub>2</sub> suppressor (MCS) is designed to remove carbonate from the sample as well as any carbon dioxide, eliminating the injection peak while allowing the analyte-ion peak areas to be larger. The suppressor is available integrated into the company's model 861 Advanced Compact IC system or as a stand-alone suppressor. The suppressor's vacuum pump is controlled by remote commands and is equipped with an external power supply. Metrohm-Peak, Inc., Houston, TX.

[www.mp-ic.com](http://www.mp-ic.com)

Circle 152



### Prescraped rotors

Analtech's ready-to-use, prescraped rotors for the company's centrifugal chromatography system are designed to eliminate the inconvenience of rotor preparation. According to the company, the packaging can be used as a storage rack. The rotors are available in sizes ranging from 1 mm to 8 mm. Analtech, Inc., Newark, DE.

[www.analtech.com](http://www.analtech.com)

Circle 153



### Headspace system

Teledyne's HT3 headspace sampling system is designed to run static and dynamic headspace techniques in one system. According to the company, the system increases sensitivity by continually sweeping the sample and then trapping the VOCs. The system is designed for a wide variety of applications including food and flavor analysis, residual solvents and organic volatile impurity analysis, blood alcohol and forensic analysis, polymer analysis, and environmental analysis. Teledyne Tekmar, Mason, OH.

[www.teledynetekmar.com](http://www.teledynetekmar.com)

Circle 155

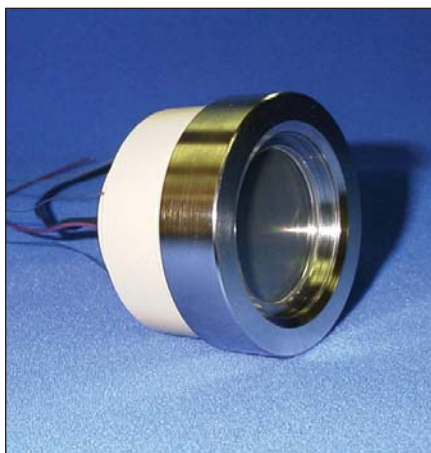


### SPE columns

Honeywell's Inert II SPE columns are designed to be equivalent to glass columns. The columns reportedly are treated to be inert to solvents and include PTFE inlet and outlet meshes resulting in no extractable phthalates, no residual production oil, and no extraneous peaks. According to the company, the the SPE columns are available with Florisil, C8, C18, cyclohexyl, diol, silica, and alumina packing materials. Honeywell Burdick & Jackson, Muskegon, MI.

[www.honeywell.com](http://www.honeywell.com)

Circle 154



### TOF Detector

BURLE's BiPolar TOF detector is designed for MS applications. The detector is available in 18-, 25-, and 40-mm diameter detection area versions and reportedly provides up to 10 kV post acceleration. According to the manufacturer, the detector offers system gains up to  $10^7$ . BURLE, Electro-Optics, Inc., Sturbridge, MA.

[www.burle.com](http://www.burle.com)

Circle 156



### **Amino acid analyzer**

Hitachi's model L-8900 amino acid analyzer is designed with built-in vacuum degassers for the buffers and reagents, continuous ninhydrin sparging, and leak sensor monitoring. The system's direct-injection autosampler reportedly provides a 200-vial capacity and optional buffer and reagent level sensors. According to the company, the reaction column, the 3- $\mu$ m ion exchange resin, and separate ninhydrin solutions produce stable results. Hitachi High Technologies America, Inc., Schaumburg, IL

[www.hitachi-hta.com](http://www.hitachi-hta.com)

Circle 157

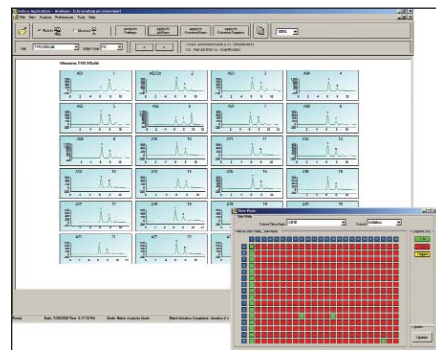


### **HPLC columns**

GL Sciences' Titanosphere HPLC microcolumns are designed for the enrichment of phosphorylated peptides from peptide mixtures. The columns are packed with porous titanium dioxide microspheres that allow the binding of organic phosphates in acidic conditions and desorption of the phosphates at alkaline pH. According to the company, the columns show stronger and more selective binding of phosphorylated peptides compared with immobilized metal affinity chromatography. GL Sciences, Inc., Torrance, CA.

[www.inertsil.com](http://www.inertsil.com)

Circle 158



### **Software module**

An advanced analysis software ratiometric-assay module for is now available for Nanostream's Veloce micro parallel LC system. The module reportedly provides a rapid readout of the ratio between the substrate and product using a predefined time window. According to the company, the module provides high throughput screening researchers with chromatogram visualization and report generation for assay experiments. Nanostream, Pasadena, CA.

[www.nanostream.com](http://www.nanostream.com)

Circle 159