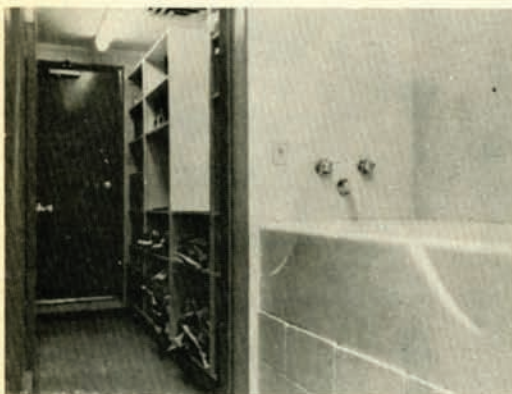




PRACTITIONERS found that separate dog and cat kennels were efficient and client pleasing.



TREATMENT ROOM and dispensing area are outside kennels and opposite the exam rooms.



ABOVE THE CAGES every inch of space was enclosed to provide the maximum storage.

WE PRACTICED *continued*

worming and the farmer retrieves them at night. The larger farms have their own veterinary facilities. If needed, we have portable holding chutes which we pull behind our vehicles when making a farm call to them.

Formerly, large animal work was performed outside the building. There was no facilities for close observation of post surgical patients."

All did not run smooth in the remodeling program. Although the practitioners owned excess land on three sides of the hospital building, they found that they needed additional land for the barn. Not originally calculated in the plans was the maneuvering needed around the unloading ramp. The result was an additional purchase of a neighbor's 60 by 90 feet piece of property for \$6,000.

The large animal addition attached to the main building included: a drive-in drug loading room, cold room, large animal operating room, preparation area, recovery stall and an in-patient barn.

In addition to better client relations, the attached barn saves the practitioner's time. Large animals can receive pre-surgical preparation in the stocks, be tabled and rolled into surgery with a minimum of difficulty.

The stocks can be arranged to hold four patients and provide hospitalization of chronic cases and post surgical observation.

Said Dr. Hicks, "I don't believe in wood stocks or pens. They don't last and can cause damage to an animal. All our fixtures in the barn were metal. To build our pens, we embedded a three-inch pipe in concrete and had the gates welded to the stanchions. There are no protruding bolts to injure an animal.

"The floor was made of ground rock, covered with straw. With our squeeze chutes, we can treat as many as 100, 400-pound calves at one time.

"We purchased a hoof trimming table to use in the barn and keep our surgery clean and free for better use. We found it to be successful and it acts as a demonstration model. Clients see it in operation and order one through us. We sold six last year."

The large animal surgery room is really three units — the surgery, preparation room and the recovery stall.

Said Dr. Hicks, "The surgery room walls, concrete floor, recovery stall floor and tilting



A DRIVE-IN drug storage room has proved to be a timesaver and its location works effectively as a sound and odor buffer within the

table surface were coated with a 3M product, Tartan. It is the same material that is used on indoor race tracks, athletic fields and The Ohio State University large animal surgery. It can be successfully cleaned with a mechanical scrubber. The operation table rolls easily over its surface.

"In addition, we encased the recovery stall with auto dashboard padding. This is second-grade material from Detroit which is available from Shank Machine Company and most satisfactory for our needs."

A large floor-to-ceiling door on rollers moves back and forth to block either the preparation or recovery room from the surgery.

Recessed light fixtures were installed in the ceiling. They were covered with plastic sheeting to diffuse the light throughout the room. One wall of the room has an overhead door to allow a truck to enter the room. Upon occasion, an animal can be tranquilized on the farm, brought in by truck, unloaded directly onto the operating table with the minimum of human exertion. In the event of a death, the patient can be loaded directly onto the truck from the operating table.

With a separate entrance and parking area, large animal clients prefer to stay at this end of the client. This removes congestion in the

building between the two practices. The overhead door is controlled at the front desk to desk to eliminate unauthorized entrance.

small animal waiting room. It was the experience of Drs. Hicks and Applegate that numerous small animal clients prefer no association with large animals or their owners.

The drive-in loading room's position on the floorplan allowed it to serve as an odor and sound buffer between the two clinical areas.

Sound was controlled with the separate zone system heating and cooling and sound deadening material used in walls and ceilings. For the most efficient odor and sound control, the old heating system was scrapped. Formerly, the only air conditioning to the building was a window unit. In the new hospital, there was installed in the attic a central hot air heating and air conditioning unit with three separate zones: small animal clinic, large animal clinic and the kennels, each zone equipped with separate exhaust vents.

At one end of the room, an automatic overhead door offers the practitioner the convenience of stocking his truck inside. The door lock is operated only from the reception desk.

"With three full-time men, it is easy to maintain the room clean at all times, as well as the rest of the building," said Dr. Hicks.

"Formerly, we had four practitioners working out of three small refrigerators. We decided to include in our plans a walk-in cooler

continued