

BASi
2701 Kent Ave.
West Lafayette, IN
47906-1350

TELEPHONE
765.463.4527
800.845.4246

FAX
765.497.1102

E-MAIL
basi@bioanalytical.com

WEBSITE
www.bioanalytical.com

OUTSOURCING & CONSULTING SERVICES

CORPORATE CAPABILITIES



BASi

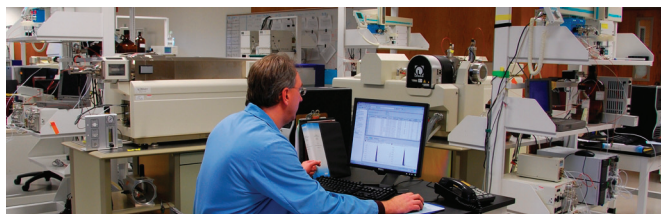
Corporate description

BASi has over 300,000 feet² of contract clinical, pre-clinical laboratory, and research space and three bioanalytical sites spanning eight time zones. This includes a 96-bed Phase I clinical unit, a 10-bed first-in-man unit, and 100,000 feet² of laboratory space devoted to rodents, canines and primates. Although BASi began by creating novel analytical instruments, electroanalytical tools, for analysis of trace components in body fluids, contract services have grown to represent over 75% of the company's revenues. Newest of the BASi research instruments is Culex®, a fully automated *in vivo* sampling system which collects samples from unattended freely-moving animals.

Major markets

BASi fills needs from late discovery drug development, providing a range of services from preclinical toxicology and pathology through Phase I-IIa clinical trials and clinical trials management, all supported by state-of-the-art bioanalytical and pharmaceutical analysis in the US and the UK. In addition to the Culex, BASi products include bioanalytical separation instrumentation, and *in vivo* sampling devices such as catheters, microdialysis

and *in vivo* ultrafiltration probes. BASi markets its services and products through direct sales in the Americas. The UK office coordinates European services and sales, and marketing throughout the rest of the world is handled directly or by key distributors.



Services offered

- Bioanalytical chemistry (40 LC-MSMS systems, 1100+ methods)
- Screening discovery compounds for bioavailability
- Preclinical toxicology and pathology
- Preclinical PK/PD research services; parallel studies in individual rodents
- Robotic blood sampling with brain microdialysis (30 Culex® work stations)
- Phase I and first-in-man clinical trials
- Immunochemistry and biomarker services
- Pharmaceutical analysis
- Stability storage (15 units) and program management
- Robotic sample preparation (96-well robots)
- Methods development/transfer/validation
- 21 CFR Part 11 document management system for integrated methods

