

# Wild Juvenile Salmonid Monitoring Program 2021 Esperanza Inlet, BC

*Report Date: June 18, 2021*

***Prepared For:***

*Grieg Seafood BC Ltd.  
106 – 1180 Ironwood Street  
Campbell River, BC  
V9W 5P7*



1310 Marwalk Cres  
Campbell River, BC.  
V9W 5X1  
phone: (250) 287-2462  
fax: (250) 287-2452  
email: [info@mainstreambio.ca](mailto:info@mainstreambio.ca)  
[www.mainstreambio.ca](http://www.mainstreambio.ca)



## Summary

Beach seine sampling was conducted on behalf of Grieg Seafood at 10 sites in Esperanza Inlet, BC in 2021. Sampling was completed to monitor sea lice abundance, prevalence, and intensity on juvenile wild salmon within Esperanza Inlet in support of the Aquaculture Stewardship Certification process for Grieg Seafood's finfish aquaculture sites in the area. This data report represents the eighth year of wild juvenile salmonid monitoring within Esperanza Inlet.

Five separate sampling events were completed during March, April, and May 2021, with timing selected to coincide with the likely peak outmigration period of juvenile salmonids. Sampling sites were selected based on their locations relative to existing aquaculture sites in the area.

Thirty individuals from each target fish species (Pacific salmonids and threespine stickleback) or the total number of captured individuals from each target species (if less than 30 were captured) were collected from each of the 10 sites during the sampling events. Total catch numbers of each species were recorded. Surface temperature and salinity were recorded at each site during each sampling event.

Collected sample fish were frozen and analyzed in the lab for the presence of sea lice by Mainstream Biological Consulting. Sea lice observed on the individual fish specimens during laboratory analysis were identified as either *Lepeophtheirus spp.* or *Caligus sp.* These lice are assumed to be *L. salmonis* and *C. clemensi* due to the lack of documented infestation of Pacific salmon by other species. The lice were recorded by life stage and the sex of pre-adult or adult motile lice was determined.

This data summary report documents the observed sea lice infestation rate on retained wild juvenile salmon collected in Esperanza Inlet in 2021. A total of 585 samples underwent lab analysis for sea lice infestation including 579 chum salmon, 3 coho salmon and 3 chinook salmon. No Atlantic salmon or other Pacific salmon species were captured. A total of 148 individuals were found to be infested with 399 sea lice in the total sample population. The calculated prevalence for the total sample population was 25.3 %, the sea lice abundance was 0.68 and the average intensity was 2.7 for the sample population collected in Esperanza Inlet in 2021.

Chum salmon smolts were captured in significantly greater numbers than any other species. A total of 1793 chum salmon were captured, representing 99.7 % of all captured salmonids. Of the 1793 chum captured, 579 were kept for lab analysis for sea lice infestation. A total of 147 chum smolts were found to be infested with a total of 398 lice resulting in a calculated prevalence of 25.4 %, abundance of 0.69 and an average intensity of 2.7 for the chum salmon sample population.

A total of three chinook salmon were captured and retained. Of the three chinook salmon one was found to be infested with a single sea louse.

No sea lice were found on the three coho salmon collected in Esperanza Inlet in 2021.

A total of 392 *Lepeophtheirus salmonis* sea lice of various life stages were identified on 146 juvenile chum salmon, and six *Caligus clemensi* sea lice were found on six of the juvenile chum salmon analyzed in the lab. Five chum salmon were infested with lice from both species.

A comparison of the prevalence, abundance and average intensity of sea lice species found on chum salmon in sample data collected between 2010 – 2012 and 2017 – 2021 in Esperanza Inlet is presented in the following summary table.

Year	<i>Caligus clemensi</i>			<i>Lepeophtheirus salmonis</i>			Total Lice		
	Prevalence	Abundance	Average Intensity	Prevalence	Abundance	Average Intensity	Prevalence	Abundance	Average Intensity
2010	6.1	0.07	1.1	18.6	0.22	1.2	23.3	0.29	1.2
2011	0.3	0.003	0.01	21.3	0.32	1.5	21.7	0.32	1.5
2012	0.5	0.007	1.2	3.0	0.03	1.0	3.5	0.04	1.1
2017	0.4	0.003	1.0	33.9	0.87	2.6	33.9	0.88	2.6
2018	1.6	0.02	1.2	3.8	0.07	1.9	5.4	0.09	1.7
2019	5.3	0.06	1.1	49.8	1.90	3.8	53.0	1.96	3.7
2020	1.6	0.02	1.0	5.1	0.10	1.9	6.8	0.12	1.7
2021	1.0	0.01	1.0	25.2	0.68	2.7	25.4	0.69	2.7

## Table of Contents

Summary.....	ii
Table of Contents.....	v
List of Figures .....	vi
List of Tables.....	vii
<b>1.0 Introduction.....</b>	<b>1</b>
<b>2.0 Methods.....</b>	<b>3</b>
2.1 Site Locations .....	3
2.2 Field Procedures.....	5
2.3 Laboratory Procedures .....	6
2.4 Data Analysis.....	7
<b>3.0 Results .....</b>	<b>9</b>
3.1 Water Quality Parameters.....	9
3.2 Fish Sample Composition .....	10
3.3 Fish Sample Size Statistics.....	12
3.3.1 <i>Chum Salmon</i> .....	12
3.4 Sea Lice Infestation Rates .....	13
3.4.1 <i>Infestation Rates on Chum Salmon</i> .....	13
3.5 Infestation Rates by Sea Lice Species.....	16
3.5.1 <i>Infestation Rates by Sea Lice Species on Chum Salmon</i> .....	16
<b>4.0 Conclusions .....</b>	<b>18</b>
<b>5.0 References .....</b>	<b>20</b>
<b>Appendix I – Field Data.....</b>	<b>I</b>
<b>Appendix II – Capture and Collection Sample Totals .....</b>	<b>III</b>
<b>Appendix III – Sea Lice Analysis Data .....</b>	<b>V</b>

## List of Figures

- Figure 1: An overview map showing the location of Esperanza Inlet on the west coast of northern Vancouver Island, BC.....2
- Figure 2: The locations of the 10 beach seine sites in Esperanza Inlet sampled in 2021. Grieg Seafood's active aquaculture tenures are indicated with a black star.....4
- Figure 3: The number of sea lice per chum salmon specimen graphed as a percentage of the total chum sample population collected in Esperanza Inlet in 2021. .. 14

## List of Tables

Table 1:	The site number and location of the 10 beach seine sites where fish were collected for sea lice analysis in Esperanza Inlet in 2021. ....	3
Table 2:	Water quality parameters collected at beach seine sites in Esperanza Inlet in 2021.....	10
Table 3:	The total of collected individuals of each fish species captured in Esperanza Inlet, BC in 2021, and the percentage of the total capture population that they represent.....	10
Table 4:	The number of captured fish (Capture Total) and the number of individual fish collected (Sample Total) from each of the 10 sample sites in Esperanza Inlet, BC in 2021. ....	11
Table 5:	Average lengths and weights of chum salmon captured in Esperanza Inlet in 2021 summarized by sampling event. ....	12
Table 6:	Results of analysis for sea lice infestation on the sample population collected by beach seine in Esperanza Inlet, BC in 2021. ....	13
Table 7:	The number of sea lice found on chum salmon collected in Esperanza Inlet in 2021 summarized by the 10 sites where beach seining was conducted. ....	15
Table 8:	The calculated sea lice prevalence, abundance and intensity by site and week as determined for chum salmon collected in Esperanza Inlet, BC in 2021.....	15
Table 9:	The number of sea lice in each life stage by species identified on the chum salmon sample population from Esperanza Inlet in 2021. LEP = <i>Lepeophtheirus salmonis</i> CAL = <i>Caligus clemensi</i> .....	16
Table 10:	The species of sea lice found on chum salmon collected in Esperanza Inlet in 2021 summarized by week and site. LEP = <i>Lepeophtheirus salmonis</i> CAL = <i>Caligus clemensi</i> .....	17
Table 11:	The species of sea lice found on chum salmon collected in Esperanza Inlet in 2021 totaled by site. LEP = <i>Lepeophtheirus salmonis</i> CAL = <i>Caligus clemensi</i> .....	17

## 1.0 Introduction

In March, April and May 2021, beach seine sampling was conducted at 10 sites in Esperanza Inlet, BC to capture wild juvenile salmon on behalf of Grieg Seafood Ltd. (Figure 1). Captured fish were analyzed in the lab for sea lice infestation. Five sampling events were completed, with sampling dates selected to coincide with the estimated peak outmigration window of juvenile salmonids.

Parasitic copepods from the family Caligidae (sea lice) found in the coastal waters of British Columbia are divided into two genera: *Lepeophtheirus* and *Caligus*. Eleven species of *Lepeophtheirus* have been identified infesting fish in the Pacific Ocean, while only one species of *Caligus* (*Caligus clemensi*) has been identified (Margolis and Arthur 1979; McDonald and Margolis, 1995). *C. clemensi* infest a wide range of natural hosts in the marine environment including salmonids and non-salmonids; while *L. salmonis* natural hosts on the Pacific coast have been found to include Pacific salmon, threespine stickleback and Pacific herring. During this analysis, *Lepeophtheirus* spp. sea lice found on salmonid specimens were assumed to be *L. salmonis* due to the lack of documented infestations of Pacific salmon by other *Lepeophtheirus* lice species (Jones and Nemec, 2004).

Both Caligidae genera have similar life histories and developmental stages (Kabata, 1972; Johnson and Albright, 1991a). The sea lice hatch from eggs and go through two free-swimming naupilii stages before developing into an infectious free-swimming copepodid. The copepodids attach to their host and develop through four chalimus stages. The chalimus are non-motile and are attached to their host by a frontal filament. The final chalimus stage terminates as the sea lice detach from the host and become motile. The sea lice can now move freely on the fish as they develop through a pre-adult stage before becoming reproductively viable adults.

Water temperature and salinity are two environmental variables known to influence sea lice development, growth, survival and reproductive rate. In British Columbia, surface seawater temperatures range from approximately 6 °C to 13 °C. Research on sea lice abundance conducted in the Broughton Archipelago and elsewhere on the coast of British Columbia indicates that surface water temperature during the winter months does not appear to hinder the seasonal abundance of *L. salmonis* (Saksida et al. 2007a, b). The rate of development and the generation times for *C. elongates* are strongly temperature dependent (Tully 1992) and although this research has not been conducted, similar relationships with temperature are to be expected for *C. clemensi* (Jones and Johnson, 2015). Survival and development of *L. salmonis* is optimal in high salinity seawater. Under laboratory conditions copepodid survival was limited to conditions where salinity was greater than 10 ppt (Johnson and Albright, 1991b).

Grieg Seafood Ltd. requested monitoring of sea lice abundance, prevalence and intensity on juvenile wild salmon within Esperanza Inlet in support of the Aquaculture Stewardship Certification for their aquaculture sites within the area. This data summary report documents the observed sea lice infestation rates on retained juvenile salmonids collected in Esperanza Inlet in 2021. This represents the eighth year of wild juvenile salmonid monitoring in Esperanza Inlet conducted by Grieg Seafood Ltd. During the eight years of sampling no Atlantic salmon have been captured or observed at the 10 beach seine sites.



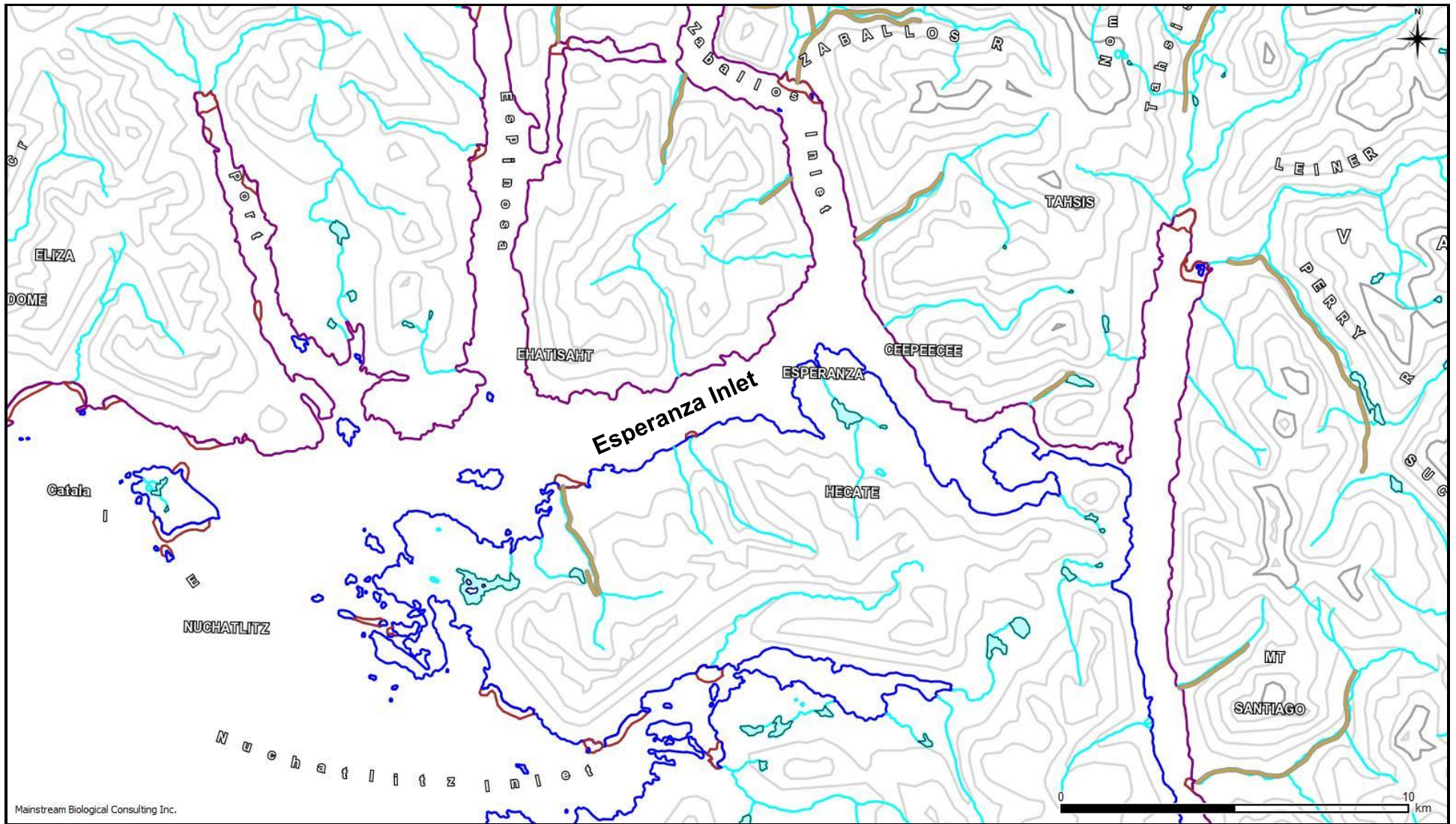


Figure 1: An overview map showing the location of Esperanza Inlet on the west coast of northern Vancouver Island, BC.

## 2.0 Methods

The fish inspected for sea lice infestation were collected from 10 sites in Esperanza Inlet, BC. These sites were chosen based on their locations relative to existing Grieg Seafood finfish aquaculture tenures (Figure 2). All 10 sites were sampled five times in 2021 between March 29 and May 27, 2021.

### 2.1 Site Locations

The approximate locations of the 10 beach seine sites are shown in Figure 2. GPS coordinates collected in the field for the sites are presented in Table 1.

Table 1: The site number and location of the 10 beach seine sites where fish were collected for sea lice analysis in Esperanza Inlet in 2021.

Site Name	Site #	Latitude	Longitude
Lutes	1	49 53.462	126 46.316
Barr Creek	2	49 54.993	126 47.186
Zeballos Inlet	3	49 54.657	126 48.169
Cliff Cove	4	49 53.553	126 49.086
Esperanza Inlet	5	49 52.870	126 50.184
Ehatisaht Creek	6	49 52.559	126 51.026
Saltery Bay	7	49 51.762	126 48.685
Steamer Point	8	49 53.056	126 47.399
Hecate Channel	9	49 52.121	126 45.836
McBride Bay	10	49 51.427	126 45.108



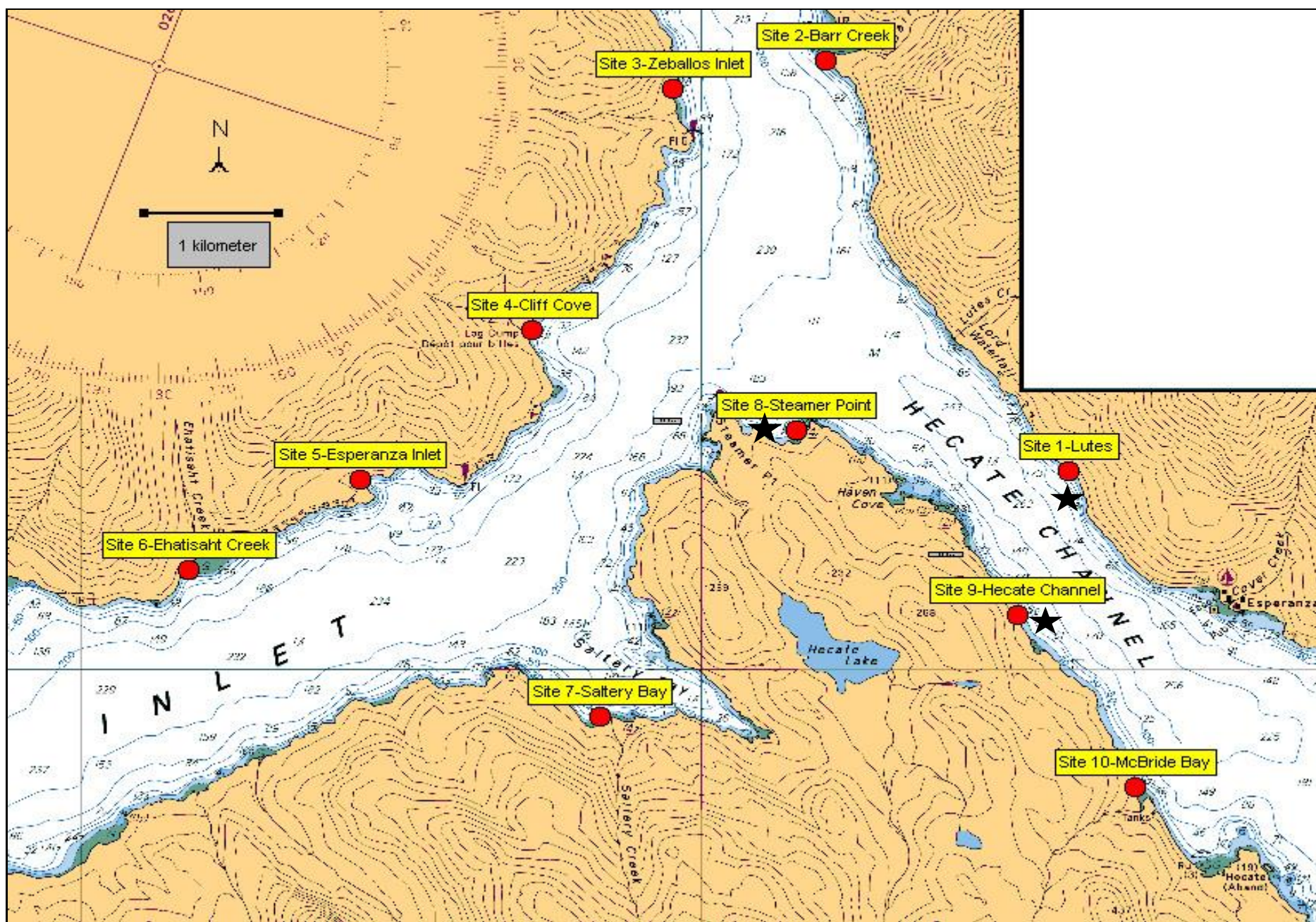


Figure 2: The locations of the 10 beach seine sites in Esperanza Inlet sampled in 2021. Grieg Seafood's active aquaculture tenures are indicated with a black star.

## 2.2 Field Procedures

Procedures used for beach seining, fish collection and field data recording were adapted from those utilized by Fisheries and Oceans Canada.

A 17 ft Boston Whaler powered by a 60 horsepower outboard motor was used to access the beach seine sites. A 150 ft (45.7 m) long by 12 ft (3.7 m) deep beach seine net was used to capture specimens. The net was constructed in three 50 ft (15.2 m) sections, with the centre bunt consisting of one-quarter inch diameter diamond mesh, and two side panels (wings) consisting of half-inch diameter diamond mesh. Floats were attached every 30 cm along the top-line and a lead line provided weight along the bottom of the net.

A three person crew conducted the beach seine sets. All beaches were approached slowly by boat and one crewmember was put ashore with one end of the net towline. The onshore crewmember held the towline at one side of the sample site, while the second crewmember ensured the net deployed smoothly off the bow of the boat as the third crewmember backed the boat in a wide semicircle towards the opposite side of the sample site. When the net was fully deployed, the second crewmember stepped into the shallow water with the towline or tossed it to the awaiting crewmember on shore. A slow retrieval of the net began immediately.

As the net was slowly retrieved, a sample of surface water was collected to measure salinity and water temperature data using an Oakton® SALT 6+ meter.

Crewmembers retrieved the net evenly from opposite ends, ensuring that the lead line remained as close to the bottom as possible. Retrieved netting was piled on the beach above the water level. As the retrieval reached the net bunt, the lead line was pulled at a faster rate than the floats to allow the netting of the bunt to form a bag under any captured fish. The lead line was then pulled up onto the beach above the water level. One crewmember worked their way around the outside of the net in the shallow water to ensure the floats stayed above the surface of the water. In this manner a small, shallow bag formed from the bunt of the net contained the captured fish in the water so that they could be sampled.

The third crew member anchored the boat and the entire crew participated in the collection of individual fish to ensure that captured fish remained in the net for as short a period of time as possible. The net was manipulated, if necessary, in response to rising or falling tides in order to ensure the captured fish remained in the net and were held in sufficient water to minimize stress. The level of sufficient water was dependant on the size and numbers of captured fish but was generally thought of as enough water to minimize fish contact with the net or with other fish.

A total of 30 individuals from each target species captured or all of the individuals present (if less than 30) were collected as samples for sea lice infestation analysis. Individual fish were “swam” into an appropriately sized whirl-pak bag. All handling of fish was kept to a minimum.

Once all the fish for retention were collected, a total catch number was recorded for each species. Any fish remaining in the net were counted or estimated (if more than 500 individuals were present) and released. The total of fish remaining in the net was added to the number of retained individuals to calculate a total capture number for a given species.

A standardized field form was used to record the following information for each beach seine set:

- The site name,
- The date;
- The time at the end of the individual fish collection;
- Comments on weather and oceanic conditions;
- Total capture and retained fish numbers for each specimen group;
- Water temperature (°C) and salinity (ppt) to one decimal place;
- Exact GPS coordinates; and
- The number of salmonid mortalities.

The retained fish from each site were packaged separately in re-sealable bags and labelled with the site name, the date and sample numbers and species. Sample bags were stored on ice in a cooler while on board the boat and transferred to a portable freezer immediately upon return to shore.

Following each set the net was reloaded onto the bow of the boat. Crewmembers scanned the net for obvious holes, which were repaired immediately if found.

The above procedures for beach seine net deployment and retrieval, as well as those described for fish collection, were repeated at all 10 sample sites.

## **2.3 Laboratory Procedures**

Laboratory procedures for sea lice analysis were adapted from procedures demonstrated by Sheila Dawe and Eliah Kim at the Pacific Biological Station in Nanaimo, BC, during sea lice identification training conducted on April 1, 2004. Additional sea lice identification training by Paul Callow was conducted at the Pacific Biological Station in September 2007.

Fish samples were thawed immediately prior to lab analysis, and individual fish were identified to species and counted. Results were compared to the reported data found on the field data sheets to identify any errors.

A standardized data sheet was used to record sea lice analysis results from each site. The site and week number, sample date and number of fish were recorded. The date and time of the start of the analysis was also noted on the data sheet. Data from individual fish was recorded as the analysis proceeded.

Once thawed, individual fish were removed from their bag using a pair of forceps at the caudal peduncle and placed in a petri dish. Each bag was labelled chronologically with an individual identification number (1 –585). Each fish was then scanned for the presence of sea lice under a stereoscopic dissection microscope. The microscope was set at a magnification of 20X for the preliminary survey of each fish, and magnification was increased to up to 40X during individual sea lice identification.

Microscopic analysis of each fish began at the anterior end of the right side of the specimen. The head was examined first, after which a scan was made along the dorsal half of the specimen working towards the posterior end. The dorsal fin and caudal fin were lifted and expanded with a pair of forceps to check for lice. From the posterior end a return scan was made along the ventral half of the specimen back to the head. The anal fin, pelvic fin and pectoral fin were lifted and expanded and the operculum was lifted. The fish was then flipped using a pair of forceps at the caudal peduncle and the

procedure was repeated on the opposite side of the specimen. Additional scans were made longitudinally down the fish if the entire depth of the fish could not be seen in a single pass. Any sea lice observed on the fish were removed and placed in a petri dish of saline solution.

Each Whirl-pak bag was inspected after the removal of the fish for any pre-adult or adult sea lice that may have become dislodged during handling. These “loose” sea lice were recorded on the data sheet with the data for the corresponding specimen and it was assumed that the lice had come from that individual.

Sea lice were identified using characteristics outlined by Kabata (1972) and Johnson and Albright (1991a). Sea lice observed on individual fish were identified as either non-motile chalimus (including copepodid), or motile pre-adults and adults. Non-motile sea lice were identified as either of the two chalimus stages for *Lepeophtheirus salmonis* (Hamre et al., 2013) or four chalimus stages for *Caligus clemensi*. Motile lice, either pre-adults or adults, were identified as either *Lepeophtheirus salmonis* or *Caligus clemensi* and the sex of the louse was determined.

Chalimus were identified to species primarily by characteristics of the frontal filament. Size, shape, genital development, and leg development were used as secondary identifying characteristics for speciation as well as primary indicators for life stage identification. Motile sea lice were identified to species by the presence or absence of lunules. If lunules were absent the louse was identified as *Lepeophtheirus spp.* The louse was identified as *Caligus clemensi* if lunules were present. Sea lice found on captured specimens have been assumed to be either *L. salmonis* or *C. clemensi* due to the lack of documented infestations of Pacific salmon by other species of sea lice (Jones and Nemec, 2004).

After microscopic analysis individual fish specimens were measured (fork length for salmonids, total length for non-salmonids) in millimetres and weighed to the nearest tenth of a gram. Lengths and weights were recorded on the data sheet with the specimen's corresponding sea lice analysis results. The fish were then returned to their respective individual bags and repackaged in the large re-sealable bags by site before being refrozen.

In order to allow for quality assurance of sea lice identification, all sea lice were placed in labelled vials and preserved in 70 % isopropyl alcohol. Ten percent of the deloused fish specimens were randomly selected by specimen number and retained. Both the preserved lice and retained deloused fish specimens will be kept at the office of Mainstream Biological Consulting in Campbell River for five years.

## 2.4 Data Analysis

Surface water temperature and salinity measure at each site was summarized to report the minimum and maximum values as well as the calculated averages for each sample week.

Beach seine fish sample composition was summarized by species and site for each week. The fork lengths and weights of the samples were summarized to present minimum and maximum values as well as averages. Sea lice infestation rates, including the overall number of infested fish and the number of sea lice identified, were determined for the sample population, and prevalence and abundance of sea lice were calculated. Prevalence was defined as the number of host fish found to have one or more sea lice compared to the total number of host fish examined, while abundance was



defined as the total number of sea lice observed compared to the total number of host fish examined. The intensity of sea lice infestation, as described by the number of sea lice found on a single salmon was summarized. Average intensity was calculated by dividing the total number of sea lice identified by the number of infested fish.

Statistical analysis of the spatial and temporal distribution of sea lice was not conducted. Spatial and temporal analysis has been limited to the simple presentation and discussion of the number of sea lice found on fish specimens collected from each site during each of the sampling events.

### **3.0 Results**

The following sections outline the results of beach seine collection and inspection of juvenile salmonids in Esperanza Inlet BC, in 2021. Water quality and field data are presented in Appendix I, beach seine fish capture data are included in Appendix II and data on the juvenile salmon sample population including sea lice lab analysis results are located in Appendix III.

#### **3.1 Water Quality Parameters**

Surface measurements of water temperature and salinity taken during beach seining at each of the 10 sites during the five sample periods are presented in Table 2 and the complete dataset is included in Appendix I.

Recorded surface water temperatures ranged from a low of 7.8 °C recorded at Barr Creek on March 29, 2021, to a high of 15.2 °C recorded at Zeballos Inlet on May 10, 2021 (Table 2; Appendix I). Calculated weekly average surface water temperatures increased during the first four sampling events, ranging from 9.1 °C on March 29 to a high of 13.7 °C on May 10, 2021. The last sampling event on May 27, 2021 had the average surface water temperature drop slightly to 12.7°C.

Recorded surface water salinity ranged from a low of 5.6 ppt recorded at Barr Creek on April 26, 2021, to a high of 27.4 ppt recorded at Ehatisaht Creek on April 12, 2021 (Table 2; Appendix I). The calculated weekly average surface water salinity varied throughout the 2021 monitoring period (Table 2).



Table 2: Water quality parameters collected at beach seine sites in Esperanza Inlet in 2021.

Site Name	29-Mar-21		12-Apr-21		26-Apr-21		10-May-21		27-May-21	
	Temp. (°C)	Salinity (ppt)	Temp. (°C)	Salinity (ppt)	Temp. (°C)	Salinity (ppt)	Temp. (°C)	Salinity (ppt)	Temp. (°C)	Salinity (ppt)
Lutes	8.2	16.8	8.0	24.4	12.7	25.5	14.1	22.8	11.9	10.1
Barr Creek	7.8	14.9	8.2	25.7	10.6	5.6	14.3	22.5	12.4	9.4
Zeballos Inlet	8.9	16.8	9.9	24.4	11.9	11.2	15.2	22.0	12.3	9.8
Cliff Cove	9.3	15.5	9.8	25.9	12.8	16.4	15.0	22.8	12.4	8.9
Esperanza Inlet	9.6	13.3	11.5	25.2	12.7	25.6	14.0	22.5	12.7	12.7
Ehatisaht Creek	9.7	15.5	13.3	27.4	13.0	25.3	14.5	25.2	13.6	15.4
Saltery Bay	9.8	17.2	12.1	25.5	12.9	18.2	13.0	21.5	11.8	10.6
Steamer Point	8.6	15.4	10.2	23.1	13.1	17.6	11.7	21.7	12.9	11.9
Hecate Channel	9.3	6.5	12.5	26.5	13.7	19.8	12.7	24.3	13.5	18.0
McBride Bay	9.5	21.2	12.8	22.8	12.7	14.0	12.4	19.1	13.1	21.3
<b>Average</b>	9.1	15.3	10.8	25.1	12.6	17.9	13.7	22.4	12.7	12.8

### 3.2 Fish Sample Composition

A total of 1799 fish were captured during 2021 beach seine sampling in Esperanza Inlet, with 585 individuals (32.5 %) retained for sea lice analysis (Table 3). A summary of the total number of fish captured and collected at each site over the collection period can be found in Table 4. Totals of fish captured and collected at each site over the entire collection period can be found in Appendix II. Chum salmon smolts were captured in significantly greater numbers than any other species. A total of 1793 chum salmon were captured, representing 99.7 % of all captured salmonids. Of the 1793 chum salmon captured, 579 individual chum salmon (32.3 %) were retained and underwent lab analysis. Three chinook salmon and three coho salmon were captured and retained for lab analysis during 2021 sampling. No other Pacific salmon species and no Atlantic salmon were captured during sampling events in 2021.

Table 3: The total of collected individuals of each fish species captured in Esperanza Inlet, BC in 2021, and the percentage of the total capture population that they represent.

Common Name	Capture Totals (% of total capture population)	Collection Totals	Collection %
chum salmon	1793 (99.7%)	579	32.3
chinook salmon	3 (0.2%)	3	100
coho salmon	3 (0.2%)	3	100
<b>All species</b>	<b>1799</b>	<b>585</b>	<b>32.5</b>

Table 4: The number of captured fish (Capture Total) and the number of individual fish collected (Sample Total) from each of the 10 sample sites in Esperanza Inlet, BC in 2021.

Site	Chum		Chinook		Coho		Capture Total	Sample Total
	Capture Total	Sample Total	Capture Total	Sample Total	Capture Total	Sample Total		
Lutes	12	12	0	0	3	3	15	15
Barr Creek	213	58	0	0	0	0	213	58
Zeballos Inlet	404	104	1	1	0	0	405	105
Cliff Cove	37	35	0	0	0	0	37	35
Esperanza Inlet	411	91	2	2	0	0	413	93
Ehatisaht Creek	74	53	0	0	0	0	74	53
Saltery Bay	309	103	0	0	0	0	309	103
Steamer Point	0	0	0	0	0	0	0	0
Hecate Channel	162	61	0	0	0	0	162	61
McBride Bay	171	62	0	0	0	0	171	62

### 3.3 Fish Sample Size Statistics

Summary statistics for the sample population were completed for weight and fork lengths of chum salmon. This was not completed for chinook salmon or coho salmon as there were only three of each species collected in Esperanza Inlet in 2021.

#### 3.3.1 Chum Salmon

The weight of 579 chum smolts collected during the five sampling events in 2021 ranged from 0.3 g to 3.0 g and averaged 0.7 g (SD = 0.3). The fork length of the chum smolts ranged from 31 mm to 60 mm and averaged 39 mm (SD = 4). Chum salmon weight and length data was summarized by sampling event in Table 5, which shows an increase in both parameters over the sampling period.

Table 5: Average lengths and weights of chum salmon captured in Esperanza Inlet in 2021 summarized by sampling event.

Parameter	Chum Salmon				
	29-Mar (n=182)	12-Apr (n=169)	26-Apr (n=135)	10-May (n=93)	27-May (n=1)
Average Length (mm)	37	38	39	42	49
Average Weight (g)	0.6	0.7	0.7	0.9	1.5

### 3.4 Sea Lice Infestation Rates

The results of the laboratory analysis for the presence of sea lice on the sample population collected in Esperanza Inlet in 2021 are presented in Table 6. A complete dataset is included in Appendix III. A total of 585 samples were collected at 10 sites in Esperanza Inlet in 2021 and were inspected for sea lice infestation. A total of 148 individuals in the sample population were found to be infested with 399 sea lice (Table 6). This data reflects the identification of sea lice of either species (*L. salmonis* and *C. clemensi*) on inspected juvenile salmon.

The sea lice prevalence in the sample population collected in Esperanza Inlet in 2021 was 25.3 % and the abundance was 0.68 (Table 6). Sea lice counts of both species observed (*L. salmonis* and *C. clemensi*) were added together for the prevalence and abundance calculations for the entire sample population.

The intensity of sea lice infestation, as defined as the number of sea lice on a single sample, ranged from one louse found on 433 individuals to 13 lice found on one individual. The average intensity calculated by dividing the total number of sea lice by the number of infested fish, was 2.7 for the sample population collected in Esperanza Inlet in 2021 (Table 6).

No sea lice were found on the three coho salmon retained for analysis and one of the three chinook salmon retained was infested with a single *L. salmonis* copepodid.

Table 6: Results of analysis for sea lice infestation on the sample population collected by beach seine in Esperanza Inlet, BC in 2021.

Species	Sample size (n)	Total number of lice observed	Total number of fish infested	Prevalence (%)	Abundance	Average Intensity
chum	579	398	147	25.4	0.69	2.7
chinook	3	1	1	33.3	0.33	1.0
coho	3	0	0	0.0	0.00	0.0
<b>Total</b>	<b>585</b>	<b>399</b>	<b>148</b>	<b>25.3</b>	<b>0.68</b>	<b>2.7</b>

#### 3.4.1 Infestation Rates on Chum Salmon

The results of the laboratory analysis for sea lice infestation for chum salmon are presented by site in Table 7. A total of 147 chum salmon were found to be infested with 398 sea lice. The largest number of chum salmon infested with sea lice (36 chum) were on samples collected at Esperanza Inlet (Table 7). The largest number of lice (133 lice) were on chum salmon collected from Ehatisaht Creek. There were no chum salmon samples collected at Steamer Point in 2021 (Table 7). There was only 1 chum salmon collected during the May 27, 2021 sampling event.

Sea lice counts of both sea lice species observed (*L. salmonis* and *C. clemensi*) were added together for the presentation of sea lice infestation by site (Table 7) as well as for the calculation of sea lice prevalence and abundance by site for the chum salmon sample population (Table 8).

A total of 147 chum salmon were found to be infested with at least one sea louse. The prevalence of sea lice on the chum salmon sample population (n=579) collected in Esperanza Inlet in 2021 was 25.4 %. Sea lice prevalence calculated by site and week for chum salmon is

presented in Table 8. Sea lice prevalence calculated by site for the total chum sample population was highly variable ranging from 4.8% at McBride Bay to a high of 62.3 % at Ehatisaht Creek. Sea lice prevalence summarized by sample week increased throughout the sampling period.

A total of 398 sea lice were identified during laboratory analysis of retained chum salmon. The abundance of sea lice on the chum salmon sample population (n=579) collected in Esperanza Inlet in 2021 was 0.69. Sea lice abundance was calculated by week and by site and is presented in Table 8. The sea lice abundance increased by week throughout the sampling period. Sea lice abundance calculated by site for the total chum sample population was also variable ranging from 0.10 at Hecate Channel to a high of 2.51 at Ehatisaht Creek.

The average intensity for the chum salmon sample population in Esperanza Inlet in 2021 was 2.7. The highest sea lice intensity (6.7) was at Ehatisaht Creek on May 10, 2021. Sea lice intensity summarized by sample week was highest on chum salmon collected on May 10, 2021 (3.5). The percentage of the chum salmon sample population with the number of sea lice per sample was graphed and is presented in Figure 3. As shown in this graph, 74.5 % of the chum sample population were not infested with sea lice, 10.5 % were infested with one louse and 0.9 % of the chum salmon sample population was infested with greater than 10 sea lice.

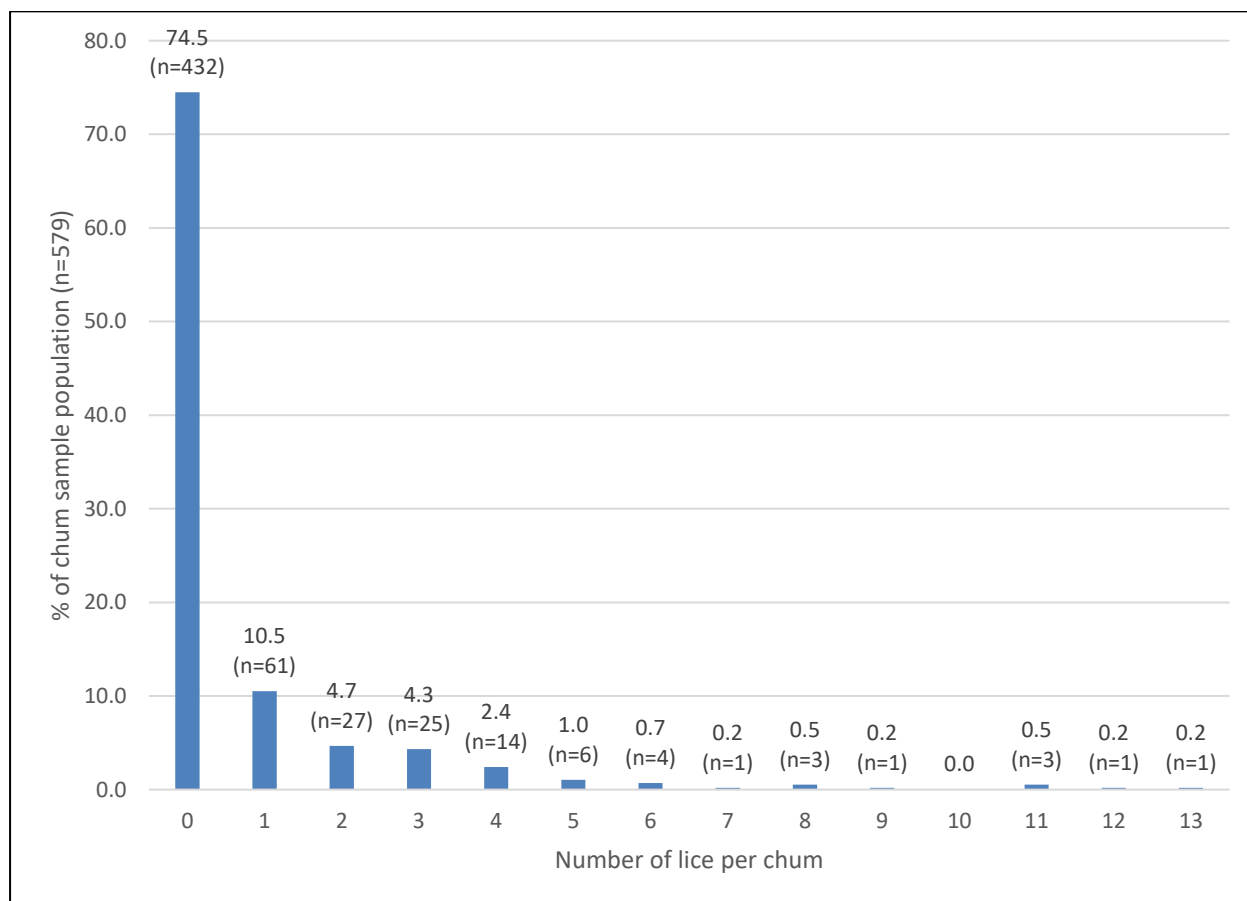


Figure 3: The number of sea lice per chum salmon specimen graphed as a percentage of the total chum sample population collected in Esperanza Inlet in 2021.

Table 7: The number of sea lice found on chum salmon collected in Esperanza Inlet in 2021 summarized by the 10 sites where beach seining was conducted.

Site	Sample Week															TOTAL		
	March 29, 2021			April 12, 2021			April 26, 2021			May 10, 2021			May 27, 2021					
	# of Chum Analyzed	# of Infested Chum	# of Lice	# of Chum Analyzed	# of Infested Chum	# of Lice	# of Chum Analyzed	# of Infested Chum	# of Lice	# of Chum Analyzed	# of Infested Chum	# of Lice	# of Chum Analyzed	# of Infested Chum	# of Lice	# of Chum Analyzed	# of Infested Chum	# of Lice
Lutes	1	0	0	3	0	0	0	0	0	8	5	9	0	0	0	12	5	9
Barr Creek	30	0	0	11	0	0	0	0	0	17	16	63	0	0	0	58	16	63
Zaballos Inlet	30	0	0	30	0	0	30	6	6	13	10	14	1	1	3	104	17	23
Cliff Cove	2	0	0	0	0	0	30	12	18	3	3	15	0	0	0	35	15	33
Esperanza Inlet	23	1	1	29	5	6	30	22	52	9	8	28	0	0	0	91	36	87
Ehatisht Creek	6	0	0	5	1	1	30	20	52	12	12	80	0	0	0	53	33	133
Saltery Bay	30	0	0	30	1	1	13	2	3	30	14	33	0	0	0	103	17	37
Steamer Point	0	0	0	0	0	0	0	0	0	0	0	0	0	0	0	0	0	0
Hecate Channel	30	1	1	30	3	4	0	0	0	1	1	1	0	0	0	61	5	6
McBride Bay	30	0	0	30	2	4	2	1	3	0	0	0	0	0	0	62	3	7
TOTAL	182	2	2	168	12	16	135	63	134	93	69	243	1	1	3	579	147	398

Table 8: The calculated sea lice prevalence, abundance and intensity by site and week as determined for chum salmon collected in Esperanza Inlet, BC in 2021.

Site	Sample Week															TOTAL		
	March 29, 2021			April 12, 2021			April 26, 2021			May 10, 2021			May 27, 2021					
	Sea Lice Prevalence (%)	Sea Lice Abundance	Sea Lice Intensity	Sea Lice Prevalence (%)	Sea Lice Abundance	Sea Lice Intensity	Sea Lice Prevalence (%)	Sea Lice Abundance	Sea Lice Intensity	Sea Lice Prevalence (%)	Sea Lice Abundance	Sea Lice Intensity	Sea Lice Prevalence (%)	Sea Lice Abundance	Sea Lice Intensity	Sea Lice Prevalence (%)	Sea Lice Abundance	Sea Lice Intensity
Lutes	0.0	0.00	-	0.0	0.00	-	-	-	-	62.5	1.13	1.8	-	-	-	41.7	0.75	1.8
Barr Creek	0.0	0.00	-	0.0	0.00	-	-	-	-	94.1	3.71	3.9	-	-	-	27.6	1.09	3.9
Zaballos Inlet	0.0	0.00	-	0.0	0.00	-	20.0	0.20	1.0	76.9	1.08	1.4	100.0	3.00	3.0	16.3	0.22	1.4
Cliff Cove	0.0	0.00	-	-	-	-	40.0	0.60	1.5	100.0	5.00	5.0	-	-	-	42.9	0.94	2.2
Esperanza Inlet	4.3	0.04	1.0	17.2	0.21	1.2	73.3	1.73	2.4	88.9	3.11	3.5	-	-	-	39.6	0.96	2.4
Ehatisht Creek	0.0	0.00	-	20.0	0.20	1.0	66.7	1.73	2.6	100.0	6.67	6.7	-	-	-	62.3	2.51	4.0
Saltery Bay	0.0	0.00	-	3.3	0.03	1.0	15.4	0.23	1.5	46.7	1.10	2.4	-	-	-	16.5	0.36	2.2
Steamer Point	-	-	-	-	-	-	-	-	-	-	-	-	-	-	-	-	-	-
Hecate Channel	3.3	0.03	1.0	10.0	0.13	1.3	-	-	-	100.0	1.00	1.0	-	-	-	8.2	0.10	1.2
McBride Bay	0.0	0.00	-	6.7	0.13	2.0	50.0	1.50	3.0	-	-	-	-	-	-	4.8	0.11	2.3
TOTAL	1.1	0.01	1.0	7.1	0.10	1.3	46.7	0.99	2.1	74.2	2.61	3.5	100.0	3.00	3.0	25.4	0.69	2.7

### 3.5 Infestation Rates by Sea Lice Species

A summary of infestation rates by sea lice species was completed for chum salmon only. Data from sea lice analysis can be found in Appendix III.

#### 3.5.1 Infestation Rates by Sea Lice Species on Chum Salmon

An analysis of the species of sea lice identified on the 147 infested chum salmon collected in Esperanza Inlet is presented in Table 9. A total of 392 *Lepeophtheirus salmonis* sea lice of various life stages were identified on 146 juvenile chum salmon and six *Caligus clemensi* sea lice were found on six of the juvenile chum salmon analyzed in the lab (Appendix III). Five chum salmon were infested with lice from both species. The sea lice species identified on chum salmon are also presented by site in Table 10.

Table 9: The number of sea lice in each life stage by species identified on the chum salmon sample population from Esperanza Inlet in 2021.  
LEP = *Lepeophtheirus salmonis* CAL = *Caligus clemensi*

Life Stage <sup>1</sup>	29-Mar	12-Apr	26-Apr	10-May	27-May
LEP Co	0	1	59	31	1
LEP C1	2	9	22	102	0
LEP C2	0	4	47	68	0
LEP PAM	0	2	1	24	1
LEP PAF	0	0	0	13	1
LEP AM	0	0	4	0	0
LEP AF	0	0	0	0	0
<b>TOTAL LEP</b>	<b>2</b>	<b>16</b>	<b>133</b>	<b>238</b>	<b>3</b>
CAL Co	0	0	0	0	0
CAL C1	0	0	1	0	0
CAL C2	0	1	0	2	0
CAL C3	0	0	0	1	0
CAL C4	0	0	0	0	0
CAL PAM	0	0	0	0	0
CAL PAF	0	0	0	0	0
CAL AM	0	0	0	0	0
CAL AF	0	0	1	0	0
<b>TOTAL CAL</b>	<b>0</b>	<b>1</b>	<b>2</b>	<b>3</b>	<b>0</b>

<sup>1</sup> Lice life stage codes: Co = copepodid, C1-4 = chalimus 1-4, PAM = pre-adult male, PAF = pre-adult female, AM = adult male, AF = adult female.

Table 10: The species of sea lice found on chum salmon collected in Esperanza Inlet in 2021 summarized by week and site. *LEP* = *Lepeophtheirus salmonis* *CAL* = *Caligus clemensi*

Site	March 29, 2021				April 12, 2021				April 26, 2021				May 10, 2021				May 27, 2021			
	# of Chum Analyzed	# of Infested Chum	# of LEP	# of CAL	# of Chum Analyzed	# of Infested Chum	# of LEP	# of CAL	# of Chum Analyzed	# of Infested Chum	# of LEP	# of CAL	# of Chum Analyzed	# of Infested Chum	# of LEP	# of CAL	# of Chum Analyzed	# of Infested Chum	# of LEP	# of CAL
Lutes	1	0	0	0	3	0	0	0	0	0	0	0	8	5	9	0	0	0	0	0
Barr Creek	30	0	0	0	11	0	0	0	0	0	0	0	17	16	62	1	0	0	0	0
Zeballos Inlet	30	0	0	0	30	0	0	0	30	6	6	0	13	10	14	0	1	1	3	0
Cliff Cove	2	0	0	0	0	0	0	0	30	12	18	0	3	3	15	0	0	0	0	0
Esperanza Inlet	23	1	1	0	29	5	6	0	30	22	51	1	9	8	27	1	0	0	0	0
Ehatisaht Creek	6	0	0	0	5	1	1	0	30	20	51	1	12	12	79	1	0	0	0	0
Saltery Bay	30	0	0	0	30	1	1	0	13	2	3	0	30	14	33	0	0	0	0	0
Steamer Point	0	0	0	0	0	0	0	0	0	0	0	0	0	0	0	0	0	0	0	0
Hecate Channel	30	1	1	0	30	3	4	0	0	0	0	0	1	1	1	0	0	0	0	0
McBride Bay	30	0	0	0	30	2	3	1	2	1	3	0	0	0	0	0	0	0	0	0
<b>TOTAL</b>	<b>182</b>	<b>2</b>	<b>2</b>	<b>0</b>	<b>168</b>	<b>12</b>	<b>15</b>	<b>1</b>	<b>135</b>	<b>63</b>	<b>132</b>	<b>2</b>	<b>93</b>	<b>69</b>	<b>240</b>	<b>3</b>	<b>1</b>	<b>1</b>	<b>3</b>	<b>0</b>

Table 11: The species of sea lice found on chum salmon collected in Esperanza Inlet in 2021 totaled by site. *LEP* = *Lepeophtheirus salmonis* *CAL* = *Caligus clemensi*

Site	TOTAL			
	# of Chum Analyzed	# of Infested Chum	# of LEP	# of CAL
Lutes	12	5	9	0
Barr Creek	58	16	62	1
Zeballos Inlet	104	17	23	0
Cliff Cove	35	15	33	0
Esperanza Inlet	91	36	85	2
Ehatisaht Creek	53	33	131	2
Saltery Bay	103	17	37	0
Steamer Point	0	0	0	0
Hecate Channel	61	5	6	0
McBride Bay	62	3	6	1
<b>TOTAL</b>	<b>579</b>	<b>147</b>	<b>392</b>	<b>6</b>



## 4.0 Conclusions

This report presents the data from the eighth year of beach seining and sea lice analysis conducted for wild juvenile salmonid monitoring in Esperanza Inlet, BC by Grieg Seafood Ltd. Reporting is limited to the summary and presentation of the 2021 collected data.

A total of 585 samples underwent lab analysis for sea lice infestation in 2021 including 579 chum, three coho and three chinook. A total of 148 individuals were found to be infested with sea lice in the total sample population, resulting in a calculated sea lice prevalence of 25.3 % in 2021. A total of 399 sea lice were found during laboratory analysis resulting in an abundance of 0.68 and average intensity of 2.7 for the sample population.

Chum salmon smolts were captured in significantly greater numbers than any other species. A total of 1793 chum salmon were captured, representing 99.7 % of all captured salmonids. Of the 1793 chum captured, 579 were kept for lab analysis for sea lice infestation. A total of 147 chum smolts were found to be infested with a total of 398 lice resulting in a calculated prevalence of 25.4 %, abundance of 0.69 and an average intensity of 2.7 for the chum salmon sample population.

A total of 392 *Lepeophtheirus salmonis* sea lice of various life stages were identified on 146 juvenile chum salmon, and six *Caligus clemensi* sea lice were found on six of the juvenile chum salmon analyzed in the lab. Five chum salmon were infested with lice from both species.

A comparison of the prevalence, abundance and average intensity of sea lice species found on chum salmon for sample data in Esperanza Inlet between 2010 – 2012 and 2017 – 2021 is presented in the following summary table.

Year	<i>Caligus clemensi</i>			<i>Lepeophtheirus salmonis</i>			Total Lice		
	Prevalence	Abundance	Average Intensity	Prevalence	Abundance	Average Intensity	Prevalence	Abundance	Average Intensity
2010	6.1	0.07	1.1	18.6	0.22	1.2	23.3	0.29	1.2
2011	0.3	0.003	0.01	21.3	0.32	1.5	21.7	0.32	1.5
2012	0.5	0.007	1.2	3.0	0.03	1.0	3.5	0.04	1.1
2017	0.4	0.003	1.0	33.9	0.87	2.6	33.9	0.88	2.6
2018	1.6	0.02	1.2	3.8	0.07	1.9	5.4	0.09	1.7
2019	5.3	0.06	1.1	49.8	1.90	3.8	53.0	1.96	3.7
2020	1.6	0.02	1.0	5.1	0.10	1.9	6.8	0.12	1.7
2021	1.0	0.01	1.0	25.2	0.68	2.7	25.4	0.69	2.7

## 5.0 References

- Hamre L.A., C Eichner, C.M.A. Caipang, S.T. Dalvin, J.E. Bron, F. Nilsen, G. Boxshall and R. Skern-Mauitzen. 2013. The Salmon Louse *Lepeophtheirus salmonis* (Copepoda: Caligidae) Life Cycle Has Only Two Chalimus Stages. PLoS ONE 8(9): e73539.
- Healey M.C. 1991. Life history of coho salmon (*Oncorhynchus tshawytscha*). In: Pacific Salmon Life Histories. C Groot, L Margolis (eds). UBC Press, Vancouver. Pp 313-393.
- Jones S. and S. Johnson. 2015. Sea lice monitoring and non-chemical measures A: Biology of sea lice, *Lepeophtheirus salmonis* and *Caligus spp.*, in western and eastern Canada. DFO Canadian Science Advisory Secretariat. Research Document 2014/019 Pacific Region. Pacific Biological Station, Fisheries and Oceans Canada.
- Jones S. and A. Nemec. 2004. Pink Salmon Action Plan Research. Part II: Sea Lice on Juvenile Salmon and on Three-spine Sticklebacks in 2003. PSARC Working Paper H2004-01.
- Johnson S.C. and L.J. Albright. 1991a. The developmental stages of *Lepeophtheirus salmonis* (Kroyer, 1837) (Copepoda: Caligidae). Canadian Journal of Zoology 69: 929-950.
- Johnson S.C. and L.J. Albright. 1991b. Development, growth and survival of *Lepeophtheirus salmonis* (Copepoda: Caligidae) under laboratory conditions. Journal of the Marine Biological Association of the UK 71: 425-436.
- Kabata Z. 1972. Developmental stages of *Caligus clemensi* (Copepoda: Caligidae) from fishes of British Columbia. Journal of the Fisheries Research Board of Canada 29: 1571-1593.
- Kabata Z. 1974. The species of *Lepeophtheirus* (Copepoda: Caligidae), from fishes of British Columbia. Journal of the Fisheries Research Board of Canada 30: 729-759.
- Margolis L., J.R. Arthur. 1979. Synopsis of the parasites of fishes of Canada. Bulletin of the Fisheries Research Board of Canada, Number 199. Ottawa. 269 pages.
- Mainstream Biological Consulting Inc. 2019. Esperanza Sound Sea Lice 2019. An unpublished report prepared for Grieg Seafood Canada.
- McDonald T.E., and L. Margolis. 1995. Synopsis of the parasites of fishes of Canada (1978-1993). Canadian Special Publication of Fisheries and Aquatic Sciences No. 122. National Research Council of Canada, Ottawa. 265 pages.
- Pacific Aquaculture Regulations. Finfish Aquaculture Licence conditions under the Pacific Aquaculture Regulations. Section 7. Sea Lice Monitoring
- Parker R.R. and L. Margolis. 1964. A new species of parasitic copepod, *Caligus clemensi* sp. nov. (Clogoida: Caligidae), from pelagic fishes in the coastal waters of British Columbia. Journal of Fisheries Research Board of Canada 21: 873-889.
- Pollard W.R., G.F. Hartman, C. Groot, and P. Edgell. 1997. Field Identification of Coastal Juvenile Salmonids. Published by Harbour Publishing for the Federal

Department of Fisheries and Oceans and MacMillan Bloedel Ltd. Madeira Park, BC Canada.

- Saksida, S., Constantine J., Karreman G.A. and Donald A. 2007a. Evaluation of sea lice abundance levels on farmed Atlantic salmon (*Salmo salar* L) located in the Broughton Archipelago of British Columbia from 2003 to 2005. *Aquacult. Res.* 38: 219-231.
- Saksida, S., Karreman G.A., Constantine J., and Donald A. 2007b. Differences in *Lepeophtheirus salmonis* abundance levels on Atlantic salmon farms in the Broughton Archipelago, British Columbia, Canada. *J. Fish Dis.* 30:357-366.
- Salo E.O. 1991. Life history of chum salmon (*Oncorhynchus keta*). In: Pacific Salmon Life Histories. C Grott, L Margolis (eds). UBC Press, Vancouver. Pp 233-309.
- Sandercock F.K. 1991. Life history of coho salmon (*Oncorhynchus kisutch*). In: Pacific Salmon Life Histories. C. Grott, L. Margolis (eds). UBC Press, Vancouver. Pp 397-445.
- Tully O. 1992. Predicting infestation parameters and impacts of caligid copepods in wild and captured fish populations. *Invert. Reprod. Develop.* 22: 91-102.

### Appendix I – Field Data

Date	Time	Site Name	Salinity (ppt)	Temperature (deg C.)
			0.2m	0.2m
29-Mar-21	10:14	Lutes	16.8	8.2
29-Mar-21	10:53	Barr Creek	14.9	7.8
29-Mar-21	11:31	Zeballos Inlet	16.8	8.9
29-Mar-21	11:58	Cliff Cove	15.5	9.3
29-Mar-21	12:24	Esperanza Inlet	13.3	9.6
29-Mar-21	12:51	Ehatisaht Creek	15.5	9.7
29-Mar-21	15:10	Saltery Bay	17.2	9.8
29-Mar-21	15:39	Steamer Point	15.4	8.6
29-Mar-21	15:55	Hecate Channel	6.5	9.3
29-Mar-21	16:28	McBride Bay	21.2	9.5
12-Apr-21	9:49	Lutes	24.4	8.0
12-Apr-21	10:10	Barr Creek	25.7	8.2
12-Apr-21	10:29	Zeballos Inlet	24.4	9.9
12-Apr-21	11:00	Cliff Cove	25.9	9.8
12-Apr-21	11:19	Esperanza Inlet	25.2	11.5
12-Apr-21	11:46	Ehatisaht Creek	27.4	13.3
12-Apr-21	13:54	Saltery Bay	25.5	12.1
12-Apr-21	14:23	Steamer Point	23.1	10.2
12-Apr-21	14:46	Hecate Channel	26.5	12.5
12-Apr-21	15:08	McBride Bay	22.8	12.8
26-Apr-21	9:51	Lutes	25.5	12.7
26-Apr-21	10:05	Barr Creek	5.6	10.6
26-Apr-21	10:25	Zeballos Inlet	11.2	11.9
26-Apr-21	10:54	Cliff Cove	16.4	12.8
26-Apr-21	11:21	Esperanza Inlet	25.6	12.7
26-Apr-21	11:46	Ehatisaht Creek	25.3	13.0
26-Apr-21	13:59	Saltery Bay	18.2	12.9
26-Apr-21	14:21	Steamer Point	17.6	13.1
26-Apr-21	14:38	Hecate Channel	19.8	13.7
26-Apr-21	14:56	McBride Bay	14.0	12.7
10-May-21	9:38	McBride Bay	19.1	12.4
10-May-21	10:00	Hecate Channel	24.3	12.7
10-May-21	10:11	Steamer Point	21.7	11.7
10-May-21	10:26	Saltery Bay	21.5	13.0
10-May-21	12:07	Ehatisaht Creek	25.2	14.5
10-May-21	12:21	Esperanza Inlet	22.5	14.0
10-May-21	12:44	Cliff Cove	22.8	15.0
10-May-21	12:59	Zeballos Inlet	22.0	15.2
10-May-21	13:15	Barr Creek	22.5	14.3
10-May-21	13:41	Lutes	22.8	14.1
27-May-21	9:58	Lutes	10.1	11.9

Date	Time	Site Name	Salinity (ppt)	Temperature (deg C.)
			0.2m	0.2m
27-May-21	10:17	Barr Creek	9.4	12.4
27-May-21	10:31	Zeballos Inlet	9.8	12.3
27-May-21	10:48	Cliff Cove	8.9	12.4
27-May-21	11:03	Esperanza Inlet	12.7	12.7
27-May-21	11:20	Ehatisaht Creek	15.4	13.6
27-May-21	12:55	Saltery Bay	10.6	11.8
27-May-21	13:12	Steamer Point	11.9	12.9
27-May-21	13:29	Hecate Channel	18.0	13.5
27-May-21	13:41	McBride Bay	21.3	13.1

## Appendix II – Capture and Collection Sample Totals

Date	Time	Site Name	Weather Comments	Tide Stage	Chum Captured	Chum Retained	Coho Captured	Coho Retained	Chinook Captured	Chinook Retained	Salmonid Mortalities	Comments
29-Mar-21	10:14	Lutes	Sun and Cloud, Calm	Low	1	1	0	0	0	0	0	Hang ups on lots of boulders. 1 sculpin, 1 shiner perch
29-Mar-21	10:53	Barr Creek	Sun and Cloud, Calm	Low	185	30	0	0	0	0	0	1 Pile perch, 7 pipefish, 12 flounder, 3 sculpins
29-Mar-21	11:31	Zeballos Inlet	Sun and Cloud, Calm	Low	100	30	0	0	0	0	0	2 sculpin
29-Mar-21	11:58	Cliff Cove	Sun and Cloud, Calm	Mid	2	2	0	0	0	0	0	No Bycatch
29-Mar-21	12:24	Esperanza Inlet	Sun and Cloud, Calm	Mid	23	23	0	0	1	1	0	No Bycatch
29-Mar-21	12:51	Ehatisaht Creek	Sun and Cloud, Calm	Mid	6	6	0	0	0	0	0	2 sculpins, lots of seaweed
29-Mar-21	15:10	Saltery Bay	Small Waves, Sun and Cloud	Mid	73	30	0	0	0	0	0	No Bycatch. Mergansers on site
29-Mar-21	15:39	Steamer Point	Sun and Cloud, Calm	Mid	0	0	0	0	0	0	0	1 pipefish, 1 herring
29-Mar-21	15:55	Hecate Channel	Calm, Sun	Mid	98	30	0	0	0	0	0	fish observed
29-Mar-21	16:28	McBride Bay	Calm, Sun	Mid	66	30	0	0	0	0	0	No Bycatch
12-Apr-21	9:49	Lutes	Calm, Sun	Low	3	3	0	0	0	0	0	No Bycatch
12-Apr-21	10:10	Barr Creek	Calm, Sun	Low	11	11	0	0	0	0	0	6 shiner perch, 3 sculpins, 5 pipefish, 6 juvenile flounders, 2 kelp crabs
12-Apr-21	10:29	Zeballos Inlet	Calm, Sun	Low	186	30	0	0	0	0	0	2 pipefish, 1 bat star, 1 juvenile greenling
12-Apr-21	11:00	Cliff Cove	Calm, Sun	Mid	0	0	0	0	0	0	0	1 pipefish
12-Apr-21	11:19	Esperanza Inlet	Calm, Sun	Mid	135	29	0	0	1	1	15	1 juvenile lingcod, dragged rock, 1 juvenile rockfish
12-Apr-21	11:46	Ehatisaht Creek	Calm, Sun	Mid	5	5	0	0	0	0	0	2 sculpins
12-Apr-21	13:54	Saltery Bay	Light Wind, Sun	High	179	30	0	0	0	0	0	Mergansers on site
12-Apr-21	14:23	Steamer Point	Calm, Sun	High	0	0	0	0	0	0	0	NFC
12-Apr-21	14:46	Hecate Channel	Calm, Sun	High	63	30	0	0	0	0	0	2 shiner perch
12-Apr-21	15:08	McBride Bay	Light Wind, Sun	High	103	30	0	0	0	0	0	No Bycatch
26-Apr-21	9:51	Lutes	Overcast, Calm	Mid	0	0	3	3	0	0	0	1 sculpin
26-Apr-21	10:05	Barr Creek	Overcast, Calm	Mid	0	0	0	0	0	0	0	3 pile perch, 10 pipefish, 3 midshipman, 1 sculpin, 15 flounder
26-Apr-21	10:25	Zeballos Inlet	Overcast, Calm	Mid	104	30	0	0	1	1	0	12 flounder, 15 sculpins, 1 pipefish, 1 green crab
26-Apr-21	10:54	Cliff Cove	Overcast, Calm	Mid	32	30	0	0	0	0	0	1 sculpin. Merganser on site. Set near creek where mergansers were
26-Apr-21	11:21	Esperanza Inlet	Overcast, Calm	High	244	30	0	0	0	0	14	3 sculpins, rock in set
26-Apr-21	11:46	Ehatisaht Creek	Overcast, Calm	High	51	30	0	0	0	0	0	2 sculpins
26-Apr-21	13:59	Saltery Bay	Overcast, Calm	Mid	13	13	0	0	0	0	0	No Bycatch
26-Apr-21	14:21	Steamer Point	Overcast, Calm	Mid	0	0	0	0	0	0	0	Many juvenile long, transparent fish (almost like a sand lance)
26-Apr-21	14:38	Hecate Channel	Overcast, Calm	Mid	0	0	0	0	0	0	0	NFC
26-Apr-21	14:56	McBride Bay	Overcast, Calm	Mid	2	2	0	0	0	0	0	No Bycatch
10-May-21	9:38	McBride Bay	Sun and Cloud, Calm	Low	0	0	0	0	0	0	0	6 pile perch, 1 surf perch, 1 sculpin
10-May-21	10:00	Hecate Channel	Sun and Cloud, Calm	Low	1	1	0	0	0	0	0	8 pile perch
10-May-21	10:11	Steamer Point	Sun and Cloud, Calm	Low	0	0	0	0	0	0	0	1 juvenile greenling
10-May-21	10:26	Saltery Bay	Sun and Cloud, Calm	Mid	44	30	0	0	0	0	0	2 juvenile greenling, 1 sand lance, 2 sculpins. Mergansers on site

Date	Time	Site Name	Weather Comments	Tide Stage	Chum Captured	Chum Retained	Coho Captured	Coho Retained	Chinook Captured	Chinook Retained	Salmonid Mortalities	Comments
10-May-21	12:07	Ehatisaht Creek	Wind, Overcast	Mid	12	12	0	0	0	0	0	21 Pile Perch, 11 Sculpins
10-May-21	12:21	Esperanza Inlet	Sun and Cloud, Calm	High	9	9	0	0	0	0	0	1 pile perch
10-May-21	12:44	Cliff Cove	High Overcast, Calm	High	3	3	0	0	0	0	0	No Bycatch
10-May-21	12:59	Zeballos Inlet	Wind, Overcast, Waves	High	13	13	0	0	0	0	0	1 Buffalo sculpin, 1 cabezon
10-May-21	13:15	Barr Creek	Waves, Overcast	High	17	17	0	0	0	0	0	1 juvenile greenling, 2 pipefish, 3 sculpins, 10 juvenile flounders
10-May-21	13:41	Lutes	Sun, cloud, waves	High	8	8	0	0	0	0	0	4 sculpins
27-May-21	9:58	Lutes	Rain, Calm	Low	0		0	0	0	0	0	No Bycatch
27-May-21	10:17	Barr Creek	Rain, Calm	Low	0	0	0	0	0	0	0	2 stripped perch, 20 shiner perch, 20 pile perch, 1 green crab, 1 pipefish, 4 sculpins, 1 C-O Sole
27-May-21	10:31	Zeballos Inlet	Rain, Calm	Low	1	1	0	0	0	0	0	2 shiner perch, 4 juvenile greenling, 2 sculpin
27-May-21	10:48	Cliff Cove	Rain, Calm	Low	0	0	0	0	0	0	0	~15 shiner perch, 2 sculpin, 4 juvenile greenling
27-May-21	11:03	Esperanza Inlet	Rain, Calm	Low	0	0	0	0	0	0	0	5 striped perch, 15 pile perch, 1 shiner, 2 snake prickleback
27-May-21	11:20	Ehatisaht Creek	Rain, Calm	Mid	0	0	0	0	0	0	0	3 shiner perch, 1 gunnel, 1 juvenile greenling, 1 sanddab
27-May-21	12:55	Saltery Bay	Rain, Calm	Mid	0	0	0	0	0	0	0	1 snake prickleback
27-May-21	13:12	Steamer Point	Rain, Calm	High	0	0	0	0	0	0	0	~20 shiner perch
27-May-21	13:29	Hecate Channel	Rain, Calm	High	0	0	0	0	0	0	0	3 shiner perch, 1 pile perch
27-May-21	13:41	McBride Bay	Rain, Calm	High	0	0	0	0	0	0	0	NFC



Appendix III – Sea Lice Analysis Data

SITE	DATE COLLECTED	FISH SPECIES	LENGTH IN MM	WEIGHT IN G	LEP Co	LEP C1	LEP C2	LEP PAM	LEP PAF	LEP AM	LEP AF	CAL Co	CAL C1	CAL C2	CAL C3	CAL C4	CAL PAM	CAL_PAF	CAL AM	CAL AF	TOT LICE ID	TOT LEP	TOT CAL
McBride Bay	26-Apr-21	Chum	45	1.0	2	0	1	0	0	0	0	0	0	0	0	0	0	0	0	0	3	3	0
McBride Bay	26-Apr-21	Chum	41	0.8	0	0	0	0	0	0	0	0	0	0	0	0	0	0	0	0	0	0	0
Esperanza Inlet	26-Apr-21	Chum	40	0.7	0	0	2	0	0	0	0	0	0	0	0	0	0	0	0	0	2	2	0
Esperanza Inlet	26-Apr-21	Chum	38	0.6	1	0	2	0	0	0	0	0	0	0	0	0	0	0	0	0	3	3	0
Esperanza Inlet	26-Apr-21	Chum	39	0.8	1	0	0	1	0	0	0	0	0	0	0	0	0	0	0	0	2	2	0
Esperanza Inlet	26-Apr-21	Chum	37	0.5	1	0	0	0	0	0	0	0	0	0	0	0	0	0	0	0	1	1	0
Esperanza Inlet	26-Apr-21	Chum	36	0.6	1	0	0	0	0	0	0	0	0	0	0	0	0	0	0	0	1	1	0
Esperanza Inlet	26-Apr-21	Chum	41	0.9	0	0	2	0	0	1	0	0	0	0	0	0	0	0	0	0	3	3	0
Esperanza Inlet	26-Apr-21	Chum	35	0.5	2	0	0	0	0	0	0	0	0	0	0	0	0	0	0	0	2	2	0
Esperanza Inlet	26-Apr-21	Chum	38	0.5	4	0	0	0	0	0	0	0	0	0	0	0	0	0	0	0	4	4	0
Esperanza Inlet	26-Apr-21	Chum	41	0.7	4	0	1	0	0	0	0	0	0	0	0	0	0	0	0	0	5	5	0
Esperanza Inlet	26-Apr-21	Chum	38	0.6	2	0	0	0	0	0	0	0	0	0	0	0	0	0	0	0	2	2	0
Esperanza Inlet	26-Apr-21	Chum	38	0.7	0	0	0	0	0	0	0	0	0	0	0	0	0	0	0	0	0	0	0
Esperanza Inlet	26-Apr-21	Chum	36	0.5	1	1	0	0	0	0	0	0	0	0	0	0	0	0	0	0	2	2	0
Esperanza Inlet	26-Apr-21	Chum	39	0.7	0	0	0	0	0	0	0	0	0	0	0	0	0	0	0	0	0	0	0
Esperanza Inlet	26-Apr-21	Chum	36	0.5	0	0	0	0	0	0	0	0	0	0	0	0	0	0	0	0	0	0	0
Esperanza Inlet	26-Apr-21	Chum	41	0.7	0	1	0	0	0	0	0	0	0	0	0	0	0	0	0	0	1	1	0
Esperanza Inlet	26-Apr-21	Chum	39	0.7	2	1	2	0	0	0	0	0	0	0	0	0	0	0	0	0	5	5	0
Esperanza Inlet	26-Apr-21	Chum	41	0.8	3	0	1	0	0	0	0	0	0	0	0	0	0	0	0	0	4	4	0
Esperanza Inlet	26-Apr-21	Chum	38	0.7	0	0	0	0	0	0	0	0	0	0	0	0	0	0	0	0	0	0	0
Esperanza Inlet	26-Apr-21	Chum	39	0.7	1	0	0	0	0	0	0	0	0	0	0	0	0	0	0	0	1	1	0
Esperanza Inlet	26-Apr-21	Chum	37	0.7	1	0	2	0	0	0	0	0	0	0	0	0	0	0	0	0	3	3	0
Esperanza Inlet	26-Apr-21	Chum	39	0.7	0	0	1	0	0	0	0	0	0	0	0	0	0	0	0	0	1	1	0
Esperanza Inlet	26-Apr-21	Chum	35	0.5	0	0	0	0	0	0	0	0	0	0	0	0	0	0	0	0	0	0	0
Esperanza Inlet	26-Apr-21	Chum	37	0.6	0	0	0	0	0	0	0	0	1	0	0	0	0	0	0	0	1	0	1
Esperanza Inlet	26-Apr-21	Chum	43	0.9	0	0	0	0	0	0	0	0	0	0	0	0	0	0	0	0	0	0	0
Esperanza Inlet	26-Apr-21	Chum	35	0.4	1	0	0	0	0	0	0	0	0	0	0	0	0	0	0	0	1	1	0
Esperanza Inlet	26-Apr-21	Chum	40	0.8	0	0	0	0	0	0	0	0	0	0	0	0	0	0	0	0	0	0	0
Esperanza Inlet	26-Apr-21	Chum	39	0.6	0	0	0	0	0	0	0	0	0	0	0	0	0	0	0	0	0	0	0
Esperanza Inlet	26-Apr-21	Chum	42	0.9	2	1	1	0	0	0	0	0	0	0	0	0	0	0	0	0	4	4	0
Esperanza Inlet	26-Apr-21	Chum	38	0.7	1	0	0	0	0	0	0	0	0	0	0	0	0	0	0	0	1	1	0
Esperanza Inlet	26-Apr-21	Chum	32	0.5	3	0	0	0	0	0	0	0	0	0	0	0	0	0	0	0	3	3	0
Lutes	26-Apr-21	Coho	76	5.9	0	0	0	0	0	0	0	0	0	0	0	0	0	0	0	0	0	0	0
Lutes	26-Apr-21	Coho	78	5.9	0	0	0	0	0	0	0	0	0	0	0	0	0	0	0	0	0	0	0
Lutes	26-Apr-21	Coho	71	4.7	0	0	0	0	0	0	0	0	0	0	0	0	0	0	0	0	0	0	0
Zeballos Inlet	26-Apr-21	Chum	36	0.4	0	0	0	0	0	0	0	0	0	0	0	0	0	0	0	0	0	0	0
Zeballos Inlet	26-Apr-21	Chum	43	0.8	0	0	0	0	0	0	0	0	0	0	0	0	0	0	0	0	0	0	0
Zeballos Inlet	26-Apr-21	Chum	38	0.5	0	0	0	0	0	0	0	0	0	0	0	0	0	0	0	0	0	0	0

SITE	DATE COLLECTED	FISH SPECIES	LENGTH IN MM	WEIGHT IN G	LEP Co	LEP C1	LEP C2	LEP PAM	LEP PAF	LEP AM	LEP AF	CAL Co	CAL C1	CAL C2	CAL C3	CAL C4	CAL PAM	CAL_PAF	CAL AM	CAL AF	TOT LICE ID	TOT LEP	TOT CAL
Zeballos Inlet	26-Apr-21	Chum	39	0.5	1	0	0	0	0	0	0	0	0	0	0	0	0	0	0	0	1	1	0
Zeballos Inlet	26-Apr-21	Chum	44	0.7	0		1	0	0	0	0	0	0	0	0	0	0	0	0	0	1	1	0
Zeballos Inlet	26-Apr-21	Chum	40	0.5	0	0	0	0	0	0	0	0	0	0	0	0	0	0	0	0	0	0	0
Zeballos Inlet	26-Apr-21	Chum	40	0.6	0	0	0	0	0	0	0	0	0	0	0	0	0	0	0	0	0	0	0
Zeballos Inlet	26-Apr-21	Chum	34	0.3	1	0	0	0	0	0	0	0	0	0	0	0	0	0	0	0	1	1	0
Zeballos Inlet	26-Apr-21	Chum	39	0.6	0	0	0	0	0	0	0	0	0	0	0	0	0	0	0	0	0	0	0
Zeballos Inlet	26-Apr-21	Chum	38	0.5	0	0	0	0	0	0	0	0	0	0	0	0	0	0	0	0	0	0	0
Zeballos Inlet	26-Apr-21	Chum	41	0.7	0	0	0	0	0	0	0	0	0	0	0	0	0	0	0	0	0	0	0
Zeballos Inlet	26-Apr-21	Chum	40	0.6	0	0	0	0	0	0	0	0	0	0	0	0	0	0	0	0	0	0	0
Zeballos Inlet	26-Apr-21	Chum	39	0.5	0	0	0	0	0	0	0	0	0	0	0	0	0	0	0	0	0	0	0
Zeballos Inlet	26-Apr-21	Chum	40	0.7	0	0	0	0	0	0	0	0	0	0	0	0	0	0	0	0	0	0	0
Zeballos Inlet	26-Apr-21	Chum	36	0.4	0	0	0	0	0	0	0	0	0	0	0	0	0	0	0	0	0	0	0
Zeballos Inlet	26-Apr-21	Chum	37	0.5	0	0	0	0	0	0	0	0	0	0	0	0	0	0	0	0	0	0	0
Zeballos Inlet	26-Apr-21	Chum	37	0.4	1	0	0	0	0	0	0	0	0	0	0	0	0	0	0	0	1	1	0
Zeballos Inlet	26-Apr-21	Chum	37	0.6	0	0	0	0	0	0	0	0	0	0	0	0	0	0	0	0	0	0	0
Zeballos Inlet	26-Apr-21	Chum	36	0.5	0	0	0	0	0	0	0	0	0	0	0	0	0	0	0	0	0	0	0
Zeballos Inlet	26-Apr-21	Chum	39	0.6	0	0	0	0	0	0	0	0	0	0	0	0	0	0	0	0	0	0	0
Zeballos Inlet	26-Apr-21	Chum	41	0.6	1	0	0	0	0	0	0	0	0	0	0	0	0	0	0	0	1	1	0
Zeballos Inlet	26-Apr-21	Chum	41	0.7	0	0	0	0	0	0	0	0	0	0	0	0	0	0	0	0	0	0	0
Zeballos Inlet	26-Apr-21	Chum	36	0.4	0	0	0	0	0	0	0	0	0	0	0	0	0	0	0	0	0	0	0
Zeballos Inlet	26-Apr-21	Chum	39	0.5	0	0	0	0	0	0	0	0	0	0	0	0	0	0	0	0	0	0	0
Zeballos Inlet	26-Apr-21	Chum	38	0.5	0	0	0	0	0	0	0	0	0	0	0	0	0	0	0	0	0	0	0
Zeballos Inlet	26-Apr-21	Chum	42	0.7	1	0	0	0	0	0	0	0	0	0	0	0	0	0	0	0	1	1	0
Zeballos Inlet	26-Apr-21	Chum	42	0.8	0	0	0	0	0	0	0	0	0	0	0	0	0	0	0	0	0	0	0
Zeballos Inlet	26-Apr-21	Chum	39	0.6	0	0	0	0	0	0	0	0	0	0	0	0	0	0	0	0	0	0	0
Zeballos Inlet	26-Apr-21	Chum	36	0.5	0	0	0	0	0	0	0	0	0	0	0	0	0	0	0	0	0	0	0
Zeballos Inlet	26-Apr-21	Chum	45	1.1	0	0	0	0	0	0	0	0	0	0	0	0	0	0	0	0	0	0	0
Zeballos Inlet	26-Apr-21	Chinook	44	0.9	1	0	0	0	0	0	0	0	0	0	0	0	0	0	0	0	1	1	0
Saltery Bay	26-Apr-21	Chum	44	1.0	0	0	0	0	0	0	0	0	0	0	0	0	0	0	0	0	0	0	0
Saltery Bay	26-Apr-21	Chum	40	0.8	1	0	0	0	0	0	0	0	0	0	0	0	0	0	0	0	1	1	0
Saltery Bay	26-Apr-21	Chum	40	0.7	0	0	0	0	0	0	0	0	0	0	0	0	0	0	0	0	0	0	0
Saltery Bay	26-Apr-21	Chum	40	0.7	1	0	1	0	0	0	0	0	0	0	0	0	0	0	0	0	2	2	0
Saltery Bay	26-Apr-21	Chum	41	0.7	0	0	0	0	0	0	0	0	0	0	0	0	0	0	0	0	0	0	0
Saltery Bay	26-Apr-21	Chum	38	0.6	0	0	0	0	0	0	0	0	0	0	0	0	0	0	0	0	0	0	0
Saltery Bay	26-Apr-21	Chum	39	0.5	0	0	0	0	0	0	0	0	0	0	0	0	0	0	0	0	0	0	0
Saltery Bay	26-Apr-21	Chum	44	0.9	0	0	0	0	0	0	0	0	0	0	0	0	0	0	0	0	0	0	0
Saltery Bay	26-Apr-21	Chum	44	0.8	0	0	0	0	0	0	0	0	0	0	0	0	0	0	0	0	0	0	0
Saltery Bay	26-Apr-21	Chum	42	0.9	0	0	0	0	0	1	0	0	0	0	0	0	0	0	0	0	0	0	0
Saltery Bay	26-Apr-21	Chum	43	0.8	0	0	0	0	0	0	0	0	0	0	0	0	0	0	0	0	0	0	0
Saltery Bay	26-Apr-21	Chum	40	0.8	0	0	0	0	0	0	0	0	0	0	0	0	0	0	0	0	0	0	0
Saltery Bay	26-Apr-21	Chum	40	0.8	0	0	0	0	0	0	0	0	0	0	0	0	0	0	0	0	0	0	0

SITE	DATE COLLECTED	FISH SPECIES	LENGTH IN MM	WEIGHT IN G	LEP Co	LEP C1	LEP C2	LEP PAM	LEP PAF	LEP AM	LEP AF	CAL Co	CAL C1	CAL C2	CAL C3	CAL C4	CAL PAM	CAL_PAF	CAL AM	CAL AF	TOT LICE ID	TOT LEP	TOT CAL
Ehatisaht Creek	12-Apr-21	Chum	43	0.9	0	0	0	0	0	0	0	0	0	0	0	0	0	0	0	0	0	0	0
Ehatisaht Creek	12-Apr-21	Chum	36	0.5	0	0	0	0	0	0	0	0	0	0	0	0	0	0	0	0	0	0	0
Ehatisaht Creek	12-Apr-21	Chum	41	0.9	0	0	0	0	0	0	0	0	0	0	0	0	0	0	0	0	0	0	0
Ehatisaht Creek	12-Apr-21	Chum	37	0.6	0	0	0	0	0	0	0	0	0	0	0	0	0	0	0	0	0	0	0
Ehatisaht Creek	12-Apr-21	Chum	36	0.6	0	1	0	0	0	0	0	0	0	0	0	0	0	0	0	0	1	1	0
Saltery Bay	29-Mar-21	Chum	35	0.5	0	0	0	0	0	0	0	0	0	0	0	0	0	0	0	0	0	0	0
Saltery Bay	29-Mar-21	Chum	38	0.6	0	0	0	0	0	0	0	0	0	0	0	0	0	0	0	0	0	0	0
Saltery Bay	29-Mar-21	Chum	33	0.4	0	0	0	0	0	0	0	0	0	0	0	0	0	0	0	0	0	0	0
Saltery Bay	29-Mar-21	Chum	34	0.4	0	0	0	0	0	0	0	0	0	0	0	0	0	0	0	0	0	0	0
Saltery Bay	29-Mar-21	Chum	35	0.5	0	0	0	0	0	0	0	0	0	0	0	0	0	0	0	0	0	0	0
Saltery Bay	29-Mar-21	Chum	37	0.5	0	0	0	0	0	0	0	0	0	0	0	0	0	0	0	0	0	0	0
Saltery Bay	29-Mar-21	Chum	35	0.4	0	0	0	0	0	0	0	0	0	0	0	0	0	0	0	0	0	0	0
Saltery Bay	29-Mar-21	Chum	37	0.6	0	0	0	0	0	0	0	0	0	0	0	0	0	0	0	0	0	0	0
Saltery Bay	29-Mar-21	Chum	33	0.4	0	0	0	0	0	0	0	0	0	0	0	0	0	0	0	0	0	0	0
Saltery Bay	29-Mar-21	Chum	34	0.4	0	0	0	0	0	0	0	0	0	0	0	0	0	0	0	0	0	0	0
Saltery Bay	29-Mar-21	Chum	33	0.3	0	0	0	0	0	0	0	0	0	0	0	0	0	0	0	0	0	0	0
Saltery Bay	29-Mar-21	Chum	38	0.6	0	0	0	0	0	0	0	0	0	0	0	0	0	0	0	0	0	0	0
Saltery Bay	29-Mar-21	Chum	33	0.4	0	0	0	0	0	0	0	0	0	0	0	0	0	0	0	0	0	0	0
Saltery Bay	29-Mar-21	Chum	36	0.5	0	0	0	0	0	0	0	0	0	0	0	0	0	0	0	0	0	0	0
Saltery Bay	29-Mar-21	Chum	34	0.4	0	0	0	0	0	0	0	0	0	0	0	0	0	0	0	0	0	0	0
Saltery Bay	29-Mar-21	Chum	36	0.5	0	0	0	0	0	0	0	0	0	0	0	0	0	0	0	0	0	0	0
Saltery Bay	29-Mar-21	Chum	38	0.7	0	0	0	0	0	0	0	0	0	0	0	0	0	0	0	0	0	0	0
Saltery Bay	29-Mar-21	Chum	34	0.4	0	0	0	0	0	0	0	0	0	0	0	0	0	0	0	0	0	0	0
Saltery Bay	29-Mar-21	Chum	36	0.5	0	0	0	0	0	0	0	0	0	0	0	0	0	0	0	0	0	0	0
Saltery Bay	29-Mar-21	Chum	34	0.4	0	0	0	0	0	0	0	0	0	0	0	0	0	0	0	0	0	0	0
Saltery Bay	29-Mar-21	Chum	36	0.5	0	0	0	0	0	0	0	0	0	0	0	0	0	0	0	0	0	0	0
Saltery Bay	29-Mar-21	Chum	41	0.8	0	0	0	0	0	0	0	0	0	0	0	0	0	0	0	0	0	0	0
Saltery Bay	29-Mar-21	Chum	31	0.4	0	0	0	0	0	0	0	0	0	0	0	0	0	0	0	0	0	0	0
Saltery Bay	29-Mar-21	Chum	34	0.5	0	0	0	0	0	0	0	0	0	0	0	0	0	0	0	0	0	0	0
Saltery Bay	29-Mar-21	Chum	34	0.4	0	0	0	0	0	0	0	0	0	0	0	0	0	0	0	0	0	0	0
Saltery Bay	29-Mar-21	Chum	36	0.6	0	0	0	0	0	0	0	0	0	0	0	0	0	0	0	0	0	0	0
Saltery Bay	29-Mar-21	Chum	35	0.4	0	0	0	0	0	0	0	0	0	0	0	0	0	0	0	0	0	0	0
Saltery Bay	29-Mar-21	Chum	35	0.4	0	0	0	0	0	0	0	0	0	0	0	0	0	0	0	0	0	0	0
Saltery Bay	29-Mar-21	Chum	35	0.5	0	0	0	0	0	0	0	0	0	0	0	0	0	0	0	0	0	0	0
Saltery Bay	29-Mar-21	Chum	35	0.5	0	0	0	0	0	0	0	0	0	0	0	0	0	0	0	0	0	0	0
Hecate Channel	29-Mar-21	Chum	36	0.5	0	0	0	0	0	0	0	0	0	0	0	0	0	0	0	0	0	0	0
Hecate Channel	29-Mar-21	Chum	35	0.5	0	0	0	0	0	0	0	0	0	0	0	0	0	0	0	0	0	0	0
Hecate Channel	29-Mar-21	Chum	37	0.5	0	0	0	0	0	0	0	0	0	0	0	0	0	0	0	0	0	0	0
Hecate Channel	29-Mar-21	Chum	42	0.8	0	0	0	0	0	0	0	0	0	0	0	0	0	0	0	0	0	0	0
Hecate Channel	29-Mar-21	Chum	42	0.9	0	0	0	0	0	0	0	0	0	0	0	0	0	0	0	0	0	0	0
Hecate Channel	29-Mar-21	Chum	40	0.7	0	0	0	0	0	0	0	0	0	0	0	0	0	0	0	0	0	0	0

SITE	DATE COLLECTED	FISH SPECIES	LENGTH IN MM	WEIGHT IN G	LEP Co	LEP C1	LEP C2	LEP PAM	LEP PAF	LEP AM	LEP AF	CAL Co	CAL C1	CAL C2	CAL C3	CAL C4	CAL PAM	CAL_PAF	CAL AM	CAL AF	TOT LICE ID	TOT LEP	TOT CAL
Hecate Channel	29-Mar-21	Chum	40	0.8	0	0	0	0	0	0	0	0	0	0	0	0	0	0	0	0	0	0	0
Hecate Channel	29-Mar-21	Chum	42	0.9	0	0	0	0	0	0	0	0	0	0	0	0	0	0	0	0	0	0	0
Hecate Channel	29-Mar-21	Chum	38	0.6	0	0	0	0	0	0	0	0	0	0	0	0	0	0	0	0	0	0	0
Hecate Channel	29-Mar-21	Chum	37	0.5	0	0	0	0	0	0	0	0	0	0	0	0	0	0	0	0	0	0	0
Hecate Channel	29-Mar-21	Chum	39	0.6	0	0	0	0	0	0	0	0	0	0	0	0	0	0	0	0	0	0	0
Hecate Channel	29-Mar-21	Chum	38	0.5	0	0	0	0	0	0	0	0	0	0	0	0	0	0	0	0	0	0	0
Hecate Channel	29-Mar-21	Chum	34	0.5	0	0	0	0	0	0	0	0	0	0	0	0	0	0	0	0	0	0	0
Hecate Channel	29-Mar-21	Chum	38	0.6	0	0	0	0	0	0	0	0	0	0	0	0	0	0	0	0	0	0	0
Hecate Channel	29-Mar-21	Chum	36	0.5	0	0	0	0	0	0	0	0	0	0	0	0	0	0	0	0	0	0	0
Hecate Channel	29-Mar-21	Chum	35	0.4	0	0	0	0	0	0	0	0	0	0	0	0	0	0	0	0	0	0	0
Hecate Channel	29-Mar-21	Chum	38	0.7	0	0	0	0	0	0	0	0	0	0	0	0	0	0	0	0	0	0	0
Hecate Channel	29-Mar-21	Chum	39	0.6	0	0	0	0	0	0	0	0	0	0	0	0	0	0	0	0	0	0	0
Hecate Channel	29-Mar-21	Chum	39	0.7	0	0	0	0	0	0	0	0	0	0	0	0	0	0	0	0	0	0	0
Hecate Channel	29-Mar-21	Chum	39	0.6	0	0	0	0	0	0	0	0	0	0	0	0	0	0	0	0	0	0	0
Hecate Channel	29-Mar-21	Chum	37	0.5	0	0	0	0	0	0	0	0	0	0	0	0	0	0	0	0	0	0	0
Hecate Channel	29-Mar-21	Chum	40	0.7	0	0	0	0	0	0	0	0	0	0	0	0	0	0	0	0	0	0	0
Hecate Channel	29-Mar-21	Chum	33	0.4	0	0	0	0	0	0	0	0	0	0	0	0	0	0	0	0	0	0	0
Hecate Channel	29-Mar-21	Chum	37	0.5	0	0	0	0	0	0	0	0	0	0	0	0	0	0	0	0	0	0	0
Hecate Channel	29-Mar-21	Chum	37	0.5	0	0	0	0	0	0	0	0	0	0	0	0	0	0	0	0	0	0	0
Hecate Channel	29-Mar-21	Chum	36	0.6	0	0	0	0	0	0	0	0	0	0	0	0	0	0	0	0	0	0	0
Hecate Channel	29-Mar-21	Chum	34	0.5	0	0	0	0	0	0	0	0	0	0	0	0	0	0	0	0	0	0	0
Hecate Channel	29-Mar-21	Chum	35	0.5	0	0	0	0	0	0	0	0	0	0	0	0	0	0	0	0	0	0	0
Hecate Channel	29-Mar-21	Chum	40	0.8	0	1	0	0	0	0	0	0	0	0	0	0	0	0	0	0	1	1	0
Hecate Channel	29-Mar-21	Chum	35	0.4	0	0	0	0	0	0	0	0	0	0	0	0	0	0	0	0	0	0	0
Cliff Cove	26-Apr-21	Chum	35	0.5	0	0	0	0	0	0	0	0	0	0	0	0	0	0	0	0	0	0	0
Cliff Cove	26-Apr-21	Chum	37	0.8	0	0	0	0	0	0	0	0	0	0	0	0	0	0	0	0	0	0	0
Cliff Cove	26-Apr-21	Chum	37	0.5	1	0	0	0	0	0	0	0	0	0	0	0	0	0	0	0	1	1	0
Cliff Cove	26-Apr-21	Chum	39	0.8	1	0	0	0	0	0	0	0	0	0	0	0	0	0	0	0	1	1	0
Cliff Cove	26-Apr-21	Chum	38	0.8	0	0	0	0	0	0	0	0	0	0	0	0	0	0	0	0	0	0	0
Cliff Cove	26-Apr-21	Chum	37	0.6	2	0	0	0	0	0	0	0	0	0	0	0	0	0	0	0	2	2	0
Cliff Cove	26-Apr-21	Chum	35	0.5	0	0	0	0	0	0	0	0	0	0	0	0	0	0	0	0	0	0	0
Cliff Cove	26-Apr-21	Chum	46	1.3	1	0	0	0	0	0	0	0	0	0	0	0	0	0	0	0	1	1	0
Cliff Cove	26-Apr-21	Chum	36	0.7	0	0	0	0	0	0	0	0	0	0	0	0	0	0	0	0	0	0	0
Cliff Cove	26-Apr-21	Chum	45	1.1	0	0	0	0	0	0	0	0	0	0	0	0	0	0	0	0	0	0	0
Cliff Cove	26-Apr-21	Chum	39	0.8	0	0	0	0	0	0	0	0	0	0	0	0	0	0	0	0	0	0	0
Cliff Cove	26-Apr-21	Chum	36	0.6	0	0	0	0	0	0	0	0	0	0	0	0	0	0	0	0	0	0	0
Cliff Cove	26-Apr-21	Chum	38	0.7	0	0	0	0	0	0	0	0	0	0	0	0	0	0	0	0	0	0	0
Cliff Cove	26-Apr-21	Chum	41	0.9	0	0	0	0	0	0	0	0	0	0	0	0	0	0	0	0	0	0	0
Cliff Cove	26-Apr-21	Chum	46	1.2	0	1	1	0	0	0	0	0	0	0	0	0	0	0	0	0	1	1	0
Cliff Cove	26-Apr-21	Chum	38	0.7	0	0	0	0	0	0	0	0	0	0	0	0	0	0	0	0	0	0	0
Cliff Cove	26-Apr-21	Chum	41	0.8	0	0	0	0	0	0	0	0	0	0	0	0	0	0	0	0	0	0	0

SITE	DATE COLLECTED	FISH SPECIES	LENGTH IN MM	WEIGHT IN G	LEP Co	LEP C1	LEP C2	LEP PAM	LEP PAF	LEP AM	LEP AF	CAL Co	CAL C1	CAL C2	CAL C3	CAL C4	CAL PAM	CAL_PAF	CAL AM	CAL AF	TOT LICE ID	TOT LEP	TOT CAL
Cliff Cove	26-Apr-21	Chum	41	0.8	0	0	1	0	0	0	0	0	0	0	0	0	0	0	0	0	1	1	0
Cliff Cove	26-Apr-21	Chum	37	0.6	0	0	0	0	0	0	0	0	0	0	0	0	0	0	0	0	0	0	0
Cliff Cove	26-Apr-21	Chum	42	1.0	0	1	0	0	0	0	0	0	0	0	0	0	0	0	0	0	1	1	0
Cliff Cove	26-Apr-21	Chum	35	0.5	0	0	0	0	0	0	0	0	0	0	0	0	0	0	0	0	0	0	0
Cliff Cove	26-Apr-21	Chum	36	0.6	0	0	0	0	0	0	0	0	0	0	0	0	0	0	0	0	0	0	0
Cliff Cove	26-Apr-21	Chum	47	1.3	0	0	1	0	0	0	0	0	0	0	0	0	0	0	0	0	1	1	0
Cliff Cove	26-Apr-21	Chum	37	0.7	0	0	0	0	0	0	0	0	0	0	0	0	0	0	0	0	0	0	0
Cliff Cove	26-Apr-21	Chum	36	0.5	0	0	0	0	0	0	0	0	0	0	0	0	0	0	0	0	0	0	0
Cliff Cove	26-Apr-21	Chum	39	0.7	0	0	0	0	0	0	0	0	0	0	0	0	0	0	0	0	0	0	0
Cliff Cove	26-Apr-21	Chum	40	0.9	0	1	3	0	0	0	0	0	0	0	0	0	0	0	0	0	4	4	0
Cliff Cove	26-Apr-21	Chum	45	1.2	1	0	0	0	0	0	0	0	0	0	0	0	0	0	0	0	1	1	0
Cliff Cove	26-Apr-21	Chum	41	0.9	1	0	0	0	0	0	0	0	0	0	0	0	0	0	0	0	1	1	0
Cliff Cove	26-Apr-21	Chum	42	0.9	0	1	0	0	0	1	0	0	0	0	0	0	0	0	0	0	3	3	0
Ehatisaht Creek	26-Apr-21	Chum	38	0.7	0	0	0	0	0	0	0	0	0	0	0	0	0	0	0	0	0	0	0
Ehatisaht Creek	26-Apr-21	Chum	39	0.8	0	0	4	0	0	0	0	0	0	0	0	0	0	0	0	0	4	4	0
Ehatisaht Creek	26-Apr-21	Chum	41	0.9	0	1	0	0	0	0	0	0	0	0	0	0	0	0	0	0	1	1	0
Ehatisaht Creek	26-Apr-21	Chum	40	0.9	1	1	0	0	0	0	0	0	0	0	0	0	0	0	0	0	2	2	0
Ehatisaht Creek	26-Apr-21	Chum	36	0.6	0	0	1	0	0	0	0	0	0	0	0	0	0	0	0	0	1	1	0
Ehatisaht Creek	26-Apr-21	Chum	33	0.4	0	0	0	0	0	0	0	0	0	0	0	0	0	0	0	0	0	0	0
Ehatisaht Creek	26-Apr-21	Chum	40	1.0	0	2	2	0	0	0	0	0	0	0	0	0	0	0	0	0	4	4	0
Ehatisaht Creek	26-Apr-21	Chum	36	0.5	0	0	0	0	0	0	0	0	0	0	0	0	0	0	0	0	0	0	0
Ehatisaht Creek	26-Apr-21	Chum	45	1.1	1	3	2	0	0	0	0	0	0	0	0	0	0	0	0	0	6	6	0
Ehatisaht Creek	26-Apr-21	Chum	39	0.7	0	0	3	0	0	0	0	0	0	0	0	0	0	0	0	0	3	3	0
Ehatisaht Creek	26-Apr-21	Chum	38	0.6	0	0	0	0	0	0	0	0	0	0	0	0	0	0	0	0	0	0	0
Ehatisaht Creek	26-Apr-21	Chum	36	0.6	1	0	0	0	0	0	0	0	0	0	0	0	0	0	0	0	1	1	0
Ehatisaht Creek	26-Apr-21	Chum	37	0.7	0	0	1	0	0	0	0	0	0	0	0	0	0	0	0	0	1	1	0
Ehatisaht Creek	26-Apr-21	Chum	41	0.9	1	0	1	0	0	0	0	0	0	0	0	0	0	0	0	0	2	2	0
Ehatisaht Creek	26-Apr-21	Chum	36	0.6	0	0	0	0	0	0	0	0	0	0	0	0	0	0	0	0	0	0	0
Ehatisaht Creek	26-Apr-21	Chum	41	0.8	0	0	1	0	0	0	0	0	0	0	0	0	0	0	0	0	1	1	0
Ehatisaht Creek	26-Apr-21	Chum	44	1.2	0	1	2	0	0	0	0	0	0	0	0	0	0	0	0	0	3	3	0
Ehatisaht Creek	26-Apr-21	Chum	40	0.9	0	0	0	0	0	0	0	0	0	0	0	0	0	0	0	0	0	0	0
Ehatisaht Creek	26-Apr-21	Chum	42	1.1	1	1	2	0	0	0	0	0	0	0	0	0	0	0	0	0	4	4	0
Ehatisaht Creek	26-Apr-21	Chum	36	0.6	1	0	0	0	0	0	0	0	0	0	0	0	0	0	0	0	1	1	0
Ehatisaht Creek	26-Apr-21	Chum	39	0.9	0	0	0	0	0	0	0	0	0	0	0	0	0	0	0	0	0	0	0
Ehatisaht Creek	26-Apr-21	Chum	38	0.7	1	0	1	0	0	0	0	0	0	0	0	0	0	0	0	0	2	2	0
Ehatisaht Creek	26-Apr-21	Chum	40	0.9	1	1	1	0	0	0	0	0	0	0	0	0	0	0	0	0	3	3	0
Ehatisaht Creek	26-Apr-21	Chum	40	0.8	0	0	0	0	0	0	0	0	0	0	0	0	0	0	0	0	0	0	0
Ehatisaht Creek	26-Apr-21	Chum	37	0.7	0	1	1	0	0	0	0	0	0	0	0	0	0	0	0	0	2	2	0
Ehatisaht Creek	26-Apr-21	Chum	34	0.4	0	0	0	0	0	0	0	0	0	0	0	0	0	0	0	0	0	0	0
Ehatisaht Creek	26-Apr-21	Chum	40	0.8	0	0	0	0	0	0	0	0	0	0	0	0	0	0	0	0	0	0	0
Ehatisaht Creek	26-Apr-21	Chum	48	1.5	1	3	2	0	0	0	0	0	0	0	0	0	0	0	0	0	6	6	0

SITE	DATE COLLECTED	FISH SPECIES	LENGTH IN MM	WEIGHT IN G	LEP Co	LEP C1	LEP C2	LEP PAM	LEP PAF	LEP AM	LEP AF	CAL Co	CAL C1	CAL C2	CAL C3	CAL C4	CAL PAM	CAL_PAF	CAL AM	CAL AF	TOT LICE ID	TOT LEP	TOT CAL
Ehatisht Creek	26-Apr-21	Chum	38	0.7	2	0	0	0	0	0	0	0	0	0	0	0	0	0	0	0	2	2	0
Ehatisht Creek	26-Apr-21	Chum	38	0.7	1	0	0	0	0	1	0	0	0	0	0	0	0	0	0	1	3	2	1
Esperanza Inlet	12-Apr-21	Chinook	37	0.8	0	0	0	0	0	0	0	0	0	0	0	0	0	0	0	0	0	0	0
Esperanza Inlet	12-Apr-21	Chum	35	0.5	0	1	0	0	0	0	0	0	0	0	0	0	0	0	0	0	0	0	0
Esperanza Inlet	12-Apr-21	Chum	38	0.8	0	0	0	0	0	0	0	0	0	0	0	0	0	0	0	0	1	0	0
Esperanza Inlet	12-Apr-21	Chum	36	0.6	0	0	0	0	0	0	0	0	0	0	0	0	0	0	0	0	0	0	0
Esperanza Inlet	12-Apr-21	Chum	41	0.8	0	0	0	0	0	0	0	0	0	0	0	0	0	0	0	0	0	0	0
Esperanza Inlet	12-Apr-21	Chum	35	0.6	0	0	0	0	0	0	0	0	0	0	0	0	0	0	0	0	0	0	0
Esperanza Inlet	12-Apr-21	Chum	41	0.8	0	0	0	0	0	0	0	0	0	0	0	0	0	0	0	0	0	0	0
Esperanza Inlet	12-Apr-21	Chum	35	0.5	0	0	0	0	0	0	0	0	0	0	0	0	0	0	0	0	0	0	0
Esperanza Inlet	12-Apr-21	Chum	39	0.8	0	1	1	0	0	0	0	0	0	0	0	0	0	0	0	0	2	0	0
Esperanza Inlet	12-Apr-21	Chum	37	0.6	0	0	0	0	0	0	0	0	0	0	0	0	0	0	0	0	0	0	0
Esperanza Inlet	12-Apr-21	Chum	37	0.5	0	0	0	0	0	0	0	0	0	0	0	0	0	0	0	0	0	0	0
Esperanza Inlet	12-Apr-21	Chum	44	1.3	0	0	0	0	0	0	0	0	0	0	0	0	0	0	0	0	0	0	0
Esperanza Inlet	12-Apr-21	Chum	34	0.5	0	0	0	0	0	0	0	0	0	0	0	0	0	0	0	0	0	0	0
Esperanza Inlet	12-Apr-21	Chum	40	0.8	0	1	0	0	0	0	0	0	0	0	0	0	0	0	0	0	0	0	0
Esperanza Inlet	12-Apr-21	Chum	39	0.7	0	0	0	0	0	0	0	0	0	0	0	0	0	0	0	0	1	0	0
Esperanza Inlet	12-Apr-21	Chum	38	0.7	0	0	1	0	0	0	0	0	0	0	0	0	0	0	0	0	0	0	0
Esperanza Inlet	12-Apr-21	Chum	35	0.6	0	0	0	0	0	0	0	0	0	0	0	0	0	0	0	0	1	0	0
Esperanza Inlet	12-Apr-21	Chum	46	1.4	0	0	0	0	0	0	0	0	0	0	0	0	0	0	0	0	0	0	0
Esperanza Inlet	12-Apr-21	Chum	35	0.5	0	0	0	0	0	0	0	0	0	0	0	0	0	0	0	0	0	0	0
Esperanza Inlet	12-Apr-21	Chum	38	0.7	0	0	0	0	0	0	0	0	0	0	0	0	0	0	0	0	0	0	0
Esperanza Inlet	12-Apr-21	Chum	34	0.5	0	0	0	0	0	0	0	0	0	0	0	0	0	0	0	0	0	0	0
Esperanza Inlet	12-Apr-21	Chum	38	0.6	0	0	0	0	0	0	0	0	0	0	0	0	0	0	0	0	0	0	0
Esperanza Inlet	12-Apr-21	Chum	39	0.6	0	0	0	0	0	0	0	0	0	0	0	0	0	0	0	0	0	0	0
Esperanza Inlet	12-Apr-21	Chum	35	0.5	0	0	0	0	0	0	0	0	0	0	0	0	0	0	0	0	0	0	0
Esperanza Inlet	12-Apr-21	Chum	42	0.9	0	0	0	0	0	0	0	0	0	0	0	0	0	0	0	0	0	0	0
Esperanza Inlet	12-Apr-21	Chum	37	0.6	0	0	0	0	0	0	0	0	0	0	0	0	0	0	0	0	0	0	0
Esperanza Inlet	12-Apr-21	Chum	40	0.8	0	0	1	0	0	0	0	0	0	0	0	0	0	0	0	0	0	0	0
Esperanza Inlet	12-Apr-21	Chum	34	0.4	0	0	0	0	0	0	0	0	0	0	0	0	0	0	0	0	1	0	0
Esperanza Inlet	12-Apr-21	Chum	34	0.5	0	0	0	0	0	0	0	0	0	0	0	0	0	0	0	0	0	0	0
Esperanza Inlet	12-Apr-21	Chum	37	0.6	0	0	0	0	0	0	0	0	0	0	0	0	0	0	0	0	0	0	0
Barr Creek	12-Apr-21	Chum	36	0.7	0	0	0	0	0	0	0	0	0	0	0	0	0	0	0	0	0	0	0
Barr Creek	12-Apr-21	Chum	35	0.4	0	0	0	0	0	0	0	0	0	0	0	0	0	0	0	0	0	0	0
Barr Creek	12-Apr-21	Chum	37	0.6	0	0	0	0	0	0	0	0	0	0	0	0	0	0	0	0	0	0	0
Barr Creek	12-Apr-21	Chum	40	0.8	0	0	0	0	0	0	0	0	0	0	0	0	0	0	0	0	0	0	0
Barr Creek	12-Apr-21	Chum	38	0.6	0	0	0	0	0	0	0	0	0	0	0	0	0	0	0	0	0	0	0
Barr Creek	12-Apr-21	Chum	38	0.6	0	0	0	0	0	0	0	0	0	0	0	0	0	0	0	0	0	0	0
Barr Creek	12-Apr-21	Chum	37	0.5	0	0	0	0	0	0	0	0	0	0	0	0	0	0	0	0	0	0	0
Barr Creek	12-Apr-21	Chum	38	0.5	0	0	0	0	0	0	0	0	0	0	0	0	0	0	0	0	0	0	0
Barr Creek	12-Apr-21	Chum	36	0.5	0	0	0	0	0	0	0	0	0	0	0	0	0	0	0	0	0	0	0



SITE	DATE COLLECTED	FISH SPECIES	LENGTH IN MM	WEIGHT IN G	LEP Co	LEP C1	LEP C2	LEP PAM	LEP PAF	LEP AM	LEP AF	CAL Co	CAL C1	CAL C2	CAL C3	CAL C4	CAL PAM	CAL_PAF	CAL AM	CAL AF	TOT LICE ID	TOT LEP	TOT CAL
Barr Creek	12-Apr-21	Chum	39	0.7	0	0	0	0	0	0	0	0	0	0	0	0	0	0	0	0	0	0	0
Barr Creek	12-Apr-21	Chum	35	0.5	0	0	0	0	0	0	0	0	0	0	0	0	0	0	0	0	0	0	0
Lutes	12-Apr-21	Chum	34	0.4	0	0	0	0	0	0	0	0	0	0	0	0	0	0	0	0	0	0	0
Lutes	12-Apr-21	Chum	36	0.5	0	0	0	0	0	0	0	0	0	0	0	0	0	0	0	0	0	0	0
Lutes	12-Apr-21	Chum	36	0.5	0	0	0	0	0	0	0	0	0	0	0	0	0	0	0	0	0	0	0
Lutes	10-May-21	Chum	35	0.4	0	0	1	0	0	0	0	0	0	0	0	0	0	0	0	0	1	1	0
Lutes	10-May-21	Chum	39	0.6	0	0	0	0	0	0	0	0	0	0	0	0	0	0	0	0	0	0	0
Lutes	10-May-21	Chum	36	0.6	0	0	1	0	0	0	0	0	0	0	0	0	0	0	0	0	1	1	0
Lutes	10-May-21	Chum	39	0.7	0	1	3	0	0	0	0	0	0	0	0	0	0	0	0	0	4	4	0
Lutes	10-May-21	Chum	37	0.6	0	0	1	0	0	0	0	0	0	0	0	0	0	0	0	0	1	1	0
Lutes	10-May-21	Chum	36	0.6	0	0	0	0	0	0	0	0	0	0	0	0	0	0	0	0	0	0	0
Lutes	10-May-21	Chum	36	0.6	0	2	0	0	0	0	0	0	0	0	0	0	0	0	0	0	2	2	0
Lutes	10-May-21	Chum	36	0.5	0	0	0	0	0	0	0	0	0	0	0	0	0	0	0	0	0	0	0
Hecate Channel	10-May-21	Chum	47	1.3	0	0	1	0	0	0	0	0	0	0	0	0	0	0	0	0	1	1	0
Ehatisaht Creek	10-May-21	Chum	43	0.9	2	2	5	2													11	11	
Ehatisaht Creek	10-May-21	Chum	41	0.8	0	1	7	3	1	0	0	0	0	0	0	0	0	0	0	0	12	12	0
Ehatisaht Creek	10-May-21	Chum	40	0.8	0	1	0	0	0	0	0	0	0	0	0	0	0	0	0	0	1	1	0
Ehatisaht Creek	10-May-21	Chum	46	1.4	1	3	0	0	0	0	0	0	0	0	0	0	0	0	0	0	4	4	0
Ehatisaht Creek	10-May-21	Chum	39	0.8	1	2	1	0	0	0	0	0	0	0	0	0	0	0	0	0	4	4	0
Ehatisaht Creek	10-May-21	Chum	41	1.1	1	5	3	1	0	0	0	0	0	1	0	0	0	0	0	0	11	10	1
Ehatisaht Creek	10-May-21	Chum	43	1.0	0	4	3	2	0	0	0	0	0	0	0	0	0	0	0	0	9	9	0
Ehatisaht Creek	10-May-21	Chum	45	1.2	0	1	2	0	0	0	0	0	0	0	0	0	0	0	0	0	3	3	0
Ehatisaht Creek	10-May-21	Chum	38	0.7	2	3	1	1	0	0	0	0	0	0	0	0	0	0	0	0	7	7	0
Ehatisaht Creek	10-May-21	Chum	39	0.7	2	1	0	0	0	0	0	0	0	0	0	0	0	0	0	0	3	3	0
Ehatisaht Creek	10-May-21	Chum	43	1.0	1	0	10	2	0	0	0	0	0	0	0	0	0	0	0	0	13	13	0
Ehatisaht Creek	10-May-21	Chum	38	0.7	1	0	1	0	0	0	0	0	0	0	0	0	0	0	0	0	2	2	0
Cliff cove	29-Mar-21	Chum	32	0.3	0	0	0	0	0	0	0	0	0	0	0	0	0	0	0	0	0	0	0
Cliff cove	29-Mar-21	Chum	33	0.4	0	0	0	0	0	0	0	0	0	0	0	0	0	0	0	0	0	0	0
Lutes	29-Mar-21	Chum	38	0.5	0	0	0	0	0	0	0	0	0	0	0	0	0	0	0	0	0	0	0
Cliff cove	10-May-21	Chum	43	0.9	1	5	2	0	0	0	0	0	0	0	0	0	0	0	0	0	8	8	0
Cliff Cove	10-May-21	Chum	45	1.1	0	3	0	1	0	0	0	0	0	0	0	0	0	0	0	0	4	4	0
Cliff Cove	10-May-21	Chum	47	1.3	0	1	2	0	0	0	0	0	0	0	0	0	0	0	0	0	3	3	0
Zeballos Inlet	27-May-21	Chum	49	1.5	1	0	0	1	1	0	0	0	0	0	0	0	0	0	0	0	3	3	0
Barr Creek	29-Mar-21	Chum	36	0.5	0	0	0	0	0	0	0	0	0	0	0	0	0	0	0	0	0	0	0
Barr Creek	29-Mar-21	Chum	41	0.8	0	0	0	0	0	0	0	0	0	0	0	0	0	0	0	0	0	0	0
Barr Creek	29-Mar-21	Chum	36	0.5	0	0	0	0	0	0	0	0	0	0	0	0	0	0	0	0	0	0	0
Barr Creek	29-Mar-21	Chum	36	0.6	0	0	0	0	0	0	0	0	0	0	0	0	0	0	0	0	0	0	0
Barr Creek	29-Mar-21	Chum	33	0.3	0	0	0	0	0	0	0	0	0	0	0	0	0	0	0	0	0	0	0
Barr Creek	29-Mar-21	Chum	37	0.6	0	0	0	0	0	0	0	0	0	0	0	0	0	0	0	0	0	0	0
Barr Creek	29-Mar-21	Chum	37	0.5	0	0	0	0	0	0	0	0	0	0	0	0	0	0	0	0	0	0	0
Barr Creek	29-Mar-21	Chum	37	0.5	0	0	0	0	0	0	0	0	0	0	0	0	0	0	0	0	0	0	0

SITE	DATE COLLECTED	FISH SPECIES	LENGTH IN MM	WEIGHT IN G	LEP Co	LEP C1	LEP C2	LEP PAM	LEP PAF	LEP AM	LEP AF	CAL Co	CAL C1	CAL C2	CAL C3	CAL C4	CAL PAM	CAL_PAF	CAL AM	CAL AF	TOT LICE ID	TOT LEP	TOT CAL
Barr Creek	29-Mar-21	Chum	38	0.6	0	0	0	0	0	0	0	0	0	0	0	0	0	0	0	0	0	0	0
Barr Creek	29-Mar-21	Chum	32	0.3	0	0	0	0	0	0	0	0	0	0	0	0	0	0	0	0	0	0	0
Barr Creek	29-Mar-21	Chum	39	0.6	0	0	0	0	0	0	0	0	0	0	0	0	0	0	0	0	0	0	0
Barr Creek	29-Mar-21	Chum	36	0.6	0	0	0	0	0	0	0	0	0	0	0	0	0	0	0	0	0	0	0
Barr Creek	29-Mar-21	Chum	37	0.5	0	0	0	0	0	0	0	0	0	0	0	0	0	0	0	0	0	0	0
Barr Creek	29-Mar-21	Chum	37	0.5	0	0	0	0	0	0	0	0	0	0	0	0	0	0	0	0	0	0	0
Barr Creek	29-Mar-21	Chum	33	0.4	0	0	0	0	0	0	0	0	0	0	0	0	0	0	0	0	0	0	0
Barr Creek	29-Mar-21	Chum	33	0.4	0	0	0	0	0	0	0	0	0	0	0	0	0	0	0	0	0	0	0
Barr Creek	29-Mar-21	Chum	34	0.4	0	0	0	0	0	0	0	0	0	0	0	0	0	0	0	0	0	0	0
Barr Creek	29-Mar-21	Chum	34	0.4	0	0	0	0	0	0	0	0	0	0	0	0	0	0	0	0	0	0	0
Barr Creek	29-Mar-21	Chum	35	0.4	0	0	0	0	0	0	0	0	0	0	0	0	0	0	0	0	0	0	0
Barr Creek	29-Mar-21	Chum	36	0.5	0	0	0	0	0	0	0	0	0	0	0	0	0	0	0	0	0	0	0
Barr Creek	29-Mar-21	Chum	34	0.4	0	0	0	0	0	0	0	0	0	0	0	0	0	0	0	0	0	0	0
Barr Creek	29-Mar-21	Chum	35	0.5	0	0	0	0	0	0	0	0	0	0	0	0	0	0	0	0	0	0	0
Barr Creek	29-Mar-21	Chum	38	0.5	0	0	0	0	0	0	0	0	0	0	0	0	0	0	0	0	0	0	0
Barr Creek	29-Mar-21	Chum	33	0.4	0	0	0	0	0	0	0	0	0	0	0	0	0	0	0	0	0	0	0
Barr Creek	29-Mar-21	Chum	34	0.4	0	0	0	0	0	0	0	0	0	0	0	0	0	0	0	0	0	0	0
Barr Creek	29-Mar-21	Chum	35	0.5	0	0	0	0	0	0	0	0	0	0	0	0	0	0	0	0	0	0	0
Barr Creek	29-Mar-21	Chum	39	0.7	0	0	0	0	0	0	0	0	0	0	0	0	0	0	0	0	0	0	0
Barr Creek	29-Mar-21	Chum	34	0.4	0	0	0	0	0	0	0	0	0	0	0	0	0	0	0	0	0	0	0
Barr Creek	29-Mar-21	Chum	32	0.3	0	0	0	0	0	0	0	0	0	0	0	0	0	0	0	0	0	0	0
Barr Creek	29-Mar-21	Chum	38	0.7	0	0	0	0	0	0	0	0	0	0	0	0	0	0	0	0	0	0	0
Saltery Bay	12-Apr-21	Chum	36	0.4	0	0	0	0	0	0	0	0	0	0	0	0	0	0	0	0	0	0	0
Saltery Bay	12-Apr-21	Chum	36	0.5	0	0	0	0	0	0	0	0	0	0	0	0	0	0	0	0	0	0	0
Saltery Bay	12-Apr-21	Chum	35	0.5	0	0	0	0	0	0	0	0	0	0	0	0	0	0	0	0	0	0	0
Saltery Bay	12-Apr-21	Chum	36	0.6	0	0	0	0	0	0	0	0	0	0	0	0	0	0	0	0	0	0	0
Saltery Bay	12-Apr-21	Chum	39	0.8	0	0	0	0	0	0	0	0	0	0	0	0	0	0	0	0	0	0	0
Saltery Bay	12-Apr-21	Chum	35	0.5	0	0	0	0	0	0	0	0	0	0	0	0	0	0	0	0	0	0	0
Saltery Bay	12-Apr-21	Chum	34	0.5	0	0	0	0	0	0	0	0	0	0	0	0	0	0	0	0	0	0	0
Saltery Bay	12-Apr-21	Chum	38	0.8	0	0	0	0	0	0	0	0	0	0	0	0	0	0	0	0	0	0	0
Saltery Bay	12-Apr-21	Chum	34	0.5	0	0	0	0	0	0	0	0	0	0	0	0	0	0	0	0	0	0	0
Saltery Bay	12-Apr-21	Chum	35	0.6	0	0	0	0	0	0	0	0	0	0	0	0	0	0	0	0	0	0	0
Saltery Bay	12-Apr-21	Chum	45	0.9	0	0	0	0	0	0	0	0	0	0	0	0	0	0	0	0	0	0	0
Saltery Bay	12-Apr-21	Chum	34	0.5	0	0	0	0	0	0	0	0	0	0	0	0	0	0	0	0	0	0	0
Saltery Bay	12-Apr-21	Chum	34	0.5	0	0	0	0	0	0	0	0	0	0	0	0	0	0	0	0	0	0	0
Saltery Bay	12-Apr-21	Chum	36	0.6	0	0	0	0	0	0	0	0	0	0	0	0	0	0	0	0	0	0	0
Saltery Bay	12-Apr-21	Chum	35	0.5	0	0	0	0	0	0	0	0	0	0	0	0	0	0	0	0	0	0	0
Saltery Bay	12-Apr-21	Chum	37	0.6	0	0	0	0	0	0	0	0	0	0	0	0	0	0	0	0	0	0	0
Saltery Bay	12-Apr-21	Chum	35	0.6	0	0	0	0	0	0	0	0	0	0	0	0	0	0	0	0	0	0	0
Saltery Bay	12-Apr-21	Chum	37	0.6	0	0	0	0	0	0	0	0	0	0	0	0	0	0	0	0	0	0	0
Saltery Bay	12-Apr-21	Chum	42	0.8	0	0	0	0	0	0	0	0	0	0	0	0	0	0	0	0	0	0	0



SITE	DATE COLLECTED	FISH SPECIES	LENGTH IN MM	WEIGHT IN G	LEP Co	LEP C1	LEP C2	LEP PAM	LEP PAF	LEP AM	LEP AF	CAL Co	CAL C1	CAL C2	CAL C3	CAL C4	CAL PAM	CAL_PAF	CAL AM	CAL AF	TOT LICE ID	TOT LEP	TOT CAL
Saltery Bay	12-Apr-21	Chum	35	0.5	0	0	0	0	0	0	0	0	0	0	0	0	0	0	0	0	0	0	0
Saltery Bay	12-Apr-21	Chum	37	0.7	0	0	0	0	0	0	0	0	0	0	0	0	0	0	0	0	0	0	0
Saltery Bay	12-Apr-21	Chum	38	0.6	0	0	0	0	0	0	0	0	0	0	0	0	0	0	0	0	0	0	0
Saltery Bay	12-Apr-21	Chum	38	0.5	0	0	0	0	0	0	0	0	0	0	0	0	0	0	0	0	0	0	0
Saltery Bay	12-Apr-21	Chum	34	0.5	0	0	0	0	0	0	0	0	0	0	0	0	0	0	0	0	0	0	0
Saltery Bay	12-Apr-21	Chum	35	0.5	0	0	0	0	0	0	0	0	0	0	0	0	0	0	0	0	0	0	0
Saltery Bay	12-Apr-21	Chum	36	0.5	0	0	0	0	0	0	0	0	0	0	0	0	0	0	0	0	0	0	0
Saltery Bay	12-Apr-21	Chum	38	0.8	0	1	0	0	0	0	0	0	0	0	0	0	0	0	0	0	1	1	0
Saltery Bay	12-Apr-21	Chum	35	0.6	0	0	0	0	0	0	0	0	0	0	0	0	0	0	0	0	0	0	0
Saltery Bay	12-Apr-21	Chum	37	0.7	0	0	0	0	0	0	0	0	0	0	0	0	0	0	0	0	0	0	0
Saltery Bay	12-Apr-21	Chum	35	0.5	0	0	0	0	0	0	0	0	0	0	0	0	0	0	0	0	0	0	0
Hecate Channel	12-Apr-21	Chum	42	1.0	0	0	0	0	0	0	0	0	0	0	0	0	0	0	0	0	0	0	0
Hecate Channel	12-Apr-21	Chum	41	0.8	1	0	0	0	0	0	0	0	0	0	0	0	0	0	0	0	1	1	0
Hecate Channel	12-Apr-21	Chum	38	0.7	0	0	0	0	0	0	0	0	0	0	0	0	0	0	0	0	0	0	0
Hecate Channel	12-Apr-21	Chum	37	0.6	0	0	0	0	0	0	0	0	0	0	0	0	0	0	0	0	0	0	0
Hecate Channel	12-Apr-21	Chum	43	0.9	0	0	0	0	0	0	0	0	0	0	0	0	0	0	0	0	0	0	0
Hecate Channel	12-Apr-21	Chum	43	1.0	0	0	0	0	0	0	0	0	0	0	0	0	0	0	0	0	0	0	0
Hecate Channel	12-Apr-21	Chum	40	0.8	0	0	0	0	0	0	0	0	0	0	0	0	0	0	0	0	0	0	0
Hecate Channel	12-Apr-21	Chum	38	0.8	0	0	0	0	0	0	0	0	0	0	0	0	0	0	0	0	0	0	0
Hecate Channel	12-Apr-21	Chum	36	0.6	0	0	0	0	0	0	0	0	0	0	0	0	0	0	0	0	0	0	0
Hecate Channel	12-Apr-21	Chum	37	0.8	0	0	0	0	0	0	0	0	0	0	0	0	0	0	0	0	0	0	0
Hecate Channel	12-Apr-21	Chum	40	0.8	0	0	0	0	0	0	0	0	0	0	0	0	0	0	0	0	0	0	0
Hecate Channel	12-Apr-21	Chum	38	0.8	0	0	0	0	0	0	0	0	0	0	0	0	0	0	0	0	0	0	0
Hecate Channel	12-Apr-21	Chum	39	0.8	0	0	0	0	0	0	0	0	0	0	0	0	0	0	0	0	0	0	0
Hecate Channel	12-Apr-21	Chum	49	1.6	0	0	0	0	0	0	0	0	0	0	0	0	0	0	0	0	0	0	0
Hecate Channel	12-Apr-21	Chum	41	0.9	0	1	0	0	0	0	0	0	0	0	0	0	0	0	0	0	1	1	0
Hecate Channel	12-Apr-21	Chum	42	1.0	0	0	0	0	0	0	0	0	0	0	0	0	0	0	0	0	0	0	0
Hecate Channel	12-Apr-21	Chum	36	0.6	0	0	0	0	0	0	0	0	0	0	0	0	0	0	0	0	0	0	0
Hecate Channel	12-Apr-21	Chum	37	0.7	0	0	0	0	0	0	0	0	0	0	0	0	0	0	0	0	0	0	0
Hecate Channel	12-Apr-21	Chum	46	1.3	0	0	0	0	0	0	0	0	0	0	0	0	0	0	0	0	0	0	0
Hecate Channel	12-Apr-21	Chum	39	0.9	0	0	0	0	0	0	0	0	0	0	0	0	0	0	0	0	0	0	0
Hecate Channel	12-Apr-21	Chum	40	0.9	0	2	0	0	0	0	0	0	0	0	0	0	0	0	0	0	2	2	0
Hecate Channel	12-Apr-21	Chum	44	1.2	0	0	0	0	0	0	0	0	0	0	0	0	0	0	0	0	0	0	0
Hecate Channel	12-Apr-21	Chum	46	1.1	0	0	0	0	0	0	0	0	0	0	0	0	0	0	0	0	0	0	0
Hecate Channel	12-Apr-21	Chum	37	0.7	0	0	0	0	0	0	0	0	0	0	0	0	0	0	0	0	0	0	0
Hecate Channel	12-Apr-21	Chum	39	0.7	0	0	0	0	0	0	0	0	0	0	0	0	0	0	0	0	0	0	0
Hecate Channel	12-Apr-21	Chum	38	0.6	0	0	0	0	0	0	0	0	0	0	0	0	0	0	0	0	0	0	0
Hecate Channel	12-Apr-21	Chum	36	0.6	0	0	0	0	0	0	0	0	0	0	0	0	0	0	0	0	0	0	0
Hecate Channel	12-Apr-21	Chum	39	0.8	0	0	0	0	0	0	0	0	0	0	0	0	0	0	0	0	0	0	0
Hecate Channel	12-Apr-21	Chum	40	0.9	0	0	0	0	0	0	0	0	0	0	0	0	0	0	0	0	0	0	0
Hecate Channel	12-Apr-21	Chum	43	1.1	0	0	0	0	0	0	0	0	0	0	0	0	0	0	0	0	0	0	0

SITE	DATE COLLECTED	FISH SPECIES	LENGTH IN MM	WEIGHT IN G	LEP Co	LEP C1	LEP C2	LEP PAM	LEP PAF	LEP AM	LEP AF	CAL Co	CAL C1	CAL C2	CAL C3	CAL C4	CAL PAM	CAL_PAF	CAL AM	CAL AF	TOT LICE ID	TOT LEP	TOT CAL
Ehatisht Creek	29-Mar-21	Chum	34	0.4	0	0	0	0	0	0	0	0	0	0	0	0	0	0	0	0	0	0	0
Ehatisht Creek	29-Mar-21	Chum	38	0.6	0	0	0	0	0	0	0	0	0	0	0	0	0	0	0	0	0	0	0
Ehatisht Creek	29-Mar-21	Chum	32	0.4	0	0	0	0	0	0	0	0	0	0	0	0	0	0	0	0	0	0	0
Ehatisht Creek	29-Mar-21	Chum	34	0.4	0	0	0	0	0	0	0	0	0	0	0	0	0	0	0	0	0	0	0
Ehatisht Creek	29-Mar-21	Chum	32	0.4	0	0	0	0	0	0	0	0	0	0	0	0	0	0	0	0	0	0	0
Ehatisht Creek	29-Mar-21	Chum	34	0.4	0	0	0	0	0	0	0	0	0	0	0	0	0	0	0	0	0	0	0
Esperanza Inlet	29-Mar-21	Chinook	34	0.5	0	0	0	0	0	0	0	0	0	0	0	0	0	0	0	0	0	0	0
Esperanza Inlet	29-Mar-21	Chum	35	0.4	0	0	0	0	0	0	0	0	0	0	0	0	0	0	0	0	0	0	0
Esperanza Inlet	29-Mar-21	Chum	36	0.5	0	0	0	0	0	0	0	0	0	0	0	0	0	0	0	0	0	0	0
Esperanza Inlet	29-Mar-21	Chum	31	0.4	0	0	0	0	0	0	0	0	0	0	0	0	0	0	0	0	0	0	0
Esperanza Inlet	29-Mar-21	Chum	32	0.4	0	0	0	0	0	0	0	0	0	0	0	0	0	0	0	0	0	0	0
Esperanza Inlet	29-Mar-21	Chum	34	0.5	0	0	0	0	0	0	0	0	0	0	0	0	0	0	0	0	0	0	0
Esperanza Inlet	29-Mar-21	Chum	32	0.4	0	0	0	0	0	0	0	0	0	0	0	0	0	0	0	0	0	0	0
Esperanza Inlet	29-Mar-21	Chum	36	0.5	0	0	0	0	0	0	0	0	0	0	0	0	0	0	0	0	0	0	0
Esperanza Inlet	29-Mar-21	Chum	36	0.5	0	0	0	0	0	0	0	0	0	0	0	0	0	0	0	0	0	0	0
Esperanza Inlet	29-Mar-21	Chum	34	0.5	0	1	0	0	0	0	0	0	0	0	0	0	0	0	0	0	1	1	0
Esperanza Inlet	29-Mar-21	Chum	34	0.4	0	0	0	0	0	0	0	0	0	0	0	0	0	0	0	0	0	0	0
Esperanza Inlet	29-Mar-21	Chum	35	0.5	0	0	0	0	0	0	0	0	0	0	0	0	0	0	0	0	0	0	0
Esperanza Inlet	29-Mar-21	Chum	37	0.5	0	0	0	0	0	0	0	0	0	0	0	0	0	0	0	0	0	0	0
Esperanza Inlet	29-Mar-21	Chum	35	0.4	0	0	0	0	0	0	0	0	0	0	0	0	0	0	0	0	0	0	0
Esperanza Inlet	29-Mar-21	Chum	38	0.6	0	0	0	0	0	0	0	0	0	0	0	0	0	0	0	0	0	0	0
Esperanza Inlet	29-Mar-21	Chum	32	0.4	0	0	0	0	0	0	0	0	0	0	0	0	0	0	0	0	0	0	0
Esperanza Inlet	29-Mar-21	Chum	33	0.4	0	0	0	0	0	0	0	0	0	0	0	0	0	0	0	0	0	0	0
Esperanza Inlet	29-Mar-21	Chum	35	0.4	0	0	0	0	0	0	0	0	0	0	0	0	0	0	0	0	0	0	0
Esperanza Inlet	29-Mar-21	Chum	35	0.5	0	0	0	0	0	0	0	0	0	0	0	0	0	0	0	0	0	0	0
Esperanza Inlet	29-Mar-21	Chum	34	0.4	0	0	0	0	0	0	0	0	0	0	0	0	0	0	0	0	0	0	0
Esperanza Inlet	29-Mar-21	Chum	36	0.5	0	0	0	0	0	0	0	0	0	0	0	0	0	0	0	0	0	0	0
Esperanza Inlet	29-Mar-21	Chum	37	0.5	0	0	0	0	0	0	0	0	0	0	0	0	0	0	0	0	0	0	0
Esperanza Inlet	29-Mar-21	Chum	32	0.4	0	0	0	0	0	0	0	0	0	0	0	0	0	0	0	0	0	0	0
Esperanza Inlet	29-Mar-21	Chum	33	0.4	0	0	0	0	0	0	0	0	0	0	0	0	0	0	0	0	0	0	0
McBride Bay	12-Apr-21	Chum	43	0.9	0	0	0	0	0	0	0	0	0	0	0	0	0	0	0	0	0	0	0
McBride Bay	12-Apr-21	Chum	41	0.8	0	0	0	0	0	0	0	0	0	0	0	0	0	0	0	0	0	0	0
McBride Bay	12-Apr-21	Chum	39	0.7	0	0	0	0	0	0	0	0	0	0	0	0	0	0	0	0	0	0	0
McBride Bay	12-Apr-21	Chum	36	0.6	0	0	0	0	0	0	0	0	0	0	0	0	0	0	0	0	0	0	0
McBride Bay	12-Apr-21	Chum	42	1.0	0	0	0	0	0	0	0	0	0	0	0	0	0	0	0	0	0	0	0
McBride Bay	12-Apr-21	Chum	38	0.7	0	0	0	0	0	0	0	0	0	0	0	0	0	0	0	0	0	0	0
McBride Bay	12-Apr-21	Chum	47	1.4	0	0	1	1	0	0	0	0	0	0	0	0	0	0	0	0	1	1	0
McBride Bay	12-Apr-21	Chum	54	2.2	0	0	0	0	0	0	0	0	0	0	0	0	0	0	0	0	0	0	0
McBride Bay	12-Apr-21	Chum	37	0.7	0	0	0	0	0	0	0	0	0	0	0	0	0	0	0	0	0	0	0
McBride Bay	12-Apr-21	Chum	38	0.7	0	0	0	0	0	0	0	0	0	0	0	0	0	0	0	0	0	0	0
McBride Bay	12-Apr-21	Chum	37	0.6	0	0	0	0	0	0	0	0	0	0	0	0	0	0	0	0	0	0	0

SITE	DATE COLLECTED	FISH SPECIES	LENGTH IN MM	WEIGHT IN G	LEP Co	LEP C1	LEP C2	LEP PAM	LEP PAF	LEP AM	LEP AF	CAL Co	CAL C1	CAL C2	CAL C3	CAL C4	CAL PAM	CAL_PAF	CAL AM	CAL AF	TOT LICE ID	TOT LEP	TOT CAL
McBride Bay	12-Apr-21	Chum	41	0.9	0	0	0	0	0	0	0	0	0	0	0	0	0	0	0	0	0	0	0
McBride Bay	12-Apr-21	Chum	42	0.9	0	0	0	0	0	0	0	0	0	0	0	0	0	0	0	0	0	0	0
McBride Bay	12-Apr-21	Chum	42	1.0	0	0	0	0	0	0	0	0	0	0	0	0	0	0	0	0	0	0	0
McBride Bay	12-Apr-21	Chum	45	1.2	0	0	0	0	0	0	0	0	0	0	0	0	0	0	0	0	0	0	0
McBride Bay	12-Apr-21	Chum	47	1.2	0	0	0	0	0	0	0	0	0	0	0	0	0	0	0	0	0	0	0
McBride Bay	12-Apr-21	Chum	36	0.6	0	0	0	0	0	0	0	0	0	0	0	0	0	0	0	0	0	0	0
McBride Bay	12-Apr-21	Chum	39	0.6	0	0	0	0	0	0	0	0	0	0	0	0	0	0	0	0	0	0	0
McBride Bay	12-Apr-21	Chum	38	0.7	0	0	0	0	0	0	0	0	0	0	0	0	0	0	0	0	0	0	0
McBride Bay	12-Apr-21	Chum	36	0.6	0	0	0	0	0	0	0	0	0	0	0	0	0	0	0	0	0	0	0
McBride Bay	12-Apr-21	Chum	53	1.8	0	0	0	0	0	0	0	0	0	0	0	0	0	0	0	0	0	0	0
McBride Bay	12-Apr-21	Chum	40	0.8	0	0	0	0	0	0	0	0	0	0	0	0	0	0	0	0	0	0	0
McBride Bay	12-Apr-21	Chum	36	0.7	0	0	0	0	0	0	0	0	0	0	0	0	0	0	0	0	0	0	0
McBride Bay	12-Apr-21	Chum	37	0.6	0	0	0	0	0	0	0	0	0	0	0	0	0	0	0	0	0	0	0
McBride Bay	12-Apr-21	Chum	40	0.8	0	0	0	0	0	0	0	0	0	0	0	0	0	0	0	0	0	0	0
McBride Bay	12-Apr-21	Chum	44	1.0	0	0	0	0	0	0	0	0	0	0	0	0	0	0	0	0	0	0	0
McBride Bay	12-Apr-21	Chum	44	1.3	0	0	0	0	0	0	0	0	0	0	0	0	0	0	0	0	0	0	0
McBride Bay	12-Apr-21	Chum	43	1.0	0	0	0	0	0	0	0	0	0	0	0	0	0	0	0	0	0	0	0
McBride Bay	12-Apr-21	Chum	36	0.6	0	0	0	0	0	0	0	0	0	0	0	0	0	0	0	0	0	0	0
McBride Bay	12-Apr-21	Chum	54	2.3	0	1	0	1	0	0	0	0	0	1	0	0	0	0	0	0	3	2	1
Zeballos Inlet	29-Mar-21	Chum	38	0.6	0	0	0	0	0	0	0	0	0	0	0	0	0	0	0	0	0	0	0
Zeballos Inlet	29-Mar-21	Chum	38	0.6	0	0	0	0	0	0	0	0	0	0	0	0	0	0	0	0	0	0	0
Zeballos Inlet	29-Mar-21	Chum	37	0.5	0	0	0	0	0	0	0	0	0	0	0	0	0	0	0	0	0	0	0
Zeballos Inlet	29-Mar-21	Chum	40	0.8	0	0	0	0	0	0	0	0	0	0	0	0	0	0	0	0	0	0	0
Zeballos Inlet	29-Mar-21	Chum	37	0.5	0	0	0	0	0	0	0	0	0	0	0	0	0	0	0	0	0	0	0
Zeballos Inlet	29-Mar-21	Chum	36	0.6	0	0	0	0	0	0	0	0	0	0	0	0	0	0	0	0	0	0	0
Zeballos Inlet	29-Mar-21	Chum	38	0.6	0	0	0	0	0	0	0	0	0	0	0	0	0	0	0	0	0	0	0
Zeballos Inlet	29-Mar-21	Chum	36	0.6	0	0	0	0	0	0	0	0	0	0	0	0	0	0	0	0	0	0	0
Zeballos Inlet	29-Mar-21	Chum	39	0.8	0	0	0	0	0	0	0	0	0	0	0	0	0	0	0	0	0	0	0
Zeballos Inlet	29-Mar-21	Chum	38	0.5	0	0	0	0	0	0	0	0	0	0	0	0	0	0	0	0	0	0	0
Zeballos Inlet	29-Mar-21	Chum	36	0.6	0	0	0	0	0	0	0	0	0	0	0	0	0	0	0	0	0	0	0
Zeballos Inlet	29-Mar-21	Chum	36	0.6	0	0	0	0	0	0	0	0	0	0	0	0	0	0	0	0	0	0	0
Zeballos Inlet	29-Mar-21	Chum	35	0.4	0	0	0	0	0	0	0	0	0	0	0	0	0	0	0	0	0	0	0
Zeballos Inlet	29-Mar-21	Chum	34	0.5	0	0	0	0	0	0	0	0	0	0	0	0	0	0	0	0	0	0	0
Zeballos Inlet	29-Mar-21	Chum	35	0.5	0	0	0	0	0	0	0	0	0	0	0	0	0	0	0	0	0	0	0
Zeballos Inlet	29-Mar-21	Chum	37	0.5	0	0	0	0	0	0	0	0	0	0	0	0	0	0	0	0	0	0	0
Zeballos Inlet	29-Mar-21	Chum	33	0.7	0	0	0	0	0	0	0	0	0	0	0	0	0	0	0	0	0	0	0
Zeballos Inlet	29-Mar-21	Chum	37	0.5	0	0	0	0	0	0	0	0	0	0	0	0	0	0	0	0	0	0	0
Zeballos Inlet	29-Mar-21	Chum	36	0.5	0	0	0	0	0	0	0	0	0	0	0	0	0	0	0	0	0	0	0
Zeballos Inlet	29-Mar-21	Chum	39	0.7	0	0	0	0	0	0	0	0	0	0	0	0	0	0	0	0	0	0	0
Zeballos Inlet	29-Mar-21	Chum	35	0.5	0	0	0	0	0	0	0	0	0	0	0	0	0	0	0	0	0	0	0
Zeballos Inlet	29-Mar-21	Chum	32	0.5	0	0	0	0	0	0	0	0	0	0	0	0	0	0	0	0	0	0	0

SITE	DATE COLLECTED	FISH SPECIES	LENGTH IN MM	WEIGHT IN G	LEP Co	LEP C1	LEP C2	LEP PAM	LEP PAF	LEP AM	LEP AF	CAL Co	CAL C1	CAL C2	CAL C3	CAL C4	CAL PAM	CAL_PAF	CAL AM	CAL AF	TOT LICE ID	TOT LEP	TOT CAL
Zeballos Inlet	29-Mar-21	Chum	33	0.5	0	0	0	0	0	0	0	0	0	0	0	0	0	0	0	0	0	0	0
Zeballos Inlet	29-Mar-21	Chum	36	0.5	0	0	0	0	0	0	0	0	0	0	0	0	0	0	0	0	0	0	0
Zeballos Inlet	29-Mar-21	Chum	38	0.7	0	0	0	0	0	0	0	0	0	0	0	0	0	0	0	0	0	0	0
Zeballos Inlet	29-Mar-21	Chum	33	0.4	0	0	0	0	0	0	0	0	0	0	0	0	0	0	0	0	0	0	0
Zeballos Inlet	29-Mar-21	Chum	37	0.6	0	0	0	0	0	0	0	0	0	0	0	0	0	0	0	0	0	0	0
Zeballos Inlet	29-Mar-21	Chum	33	0.4	0	0	0	0	0	0	0	0	0	0	0	0	0	0	0	0	0	0	0
Zeballos Inlet	29-Mar-21	Chum	36	0.5	0	0	0	0	0	0	0	0	0	0	0	0	0	0	0	0	0	0	0
Zeballos Inlet	29-Mar-21	Chum	33	0.5	0	0	0	0	0	0	0	0	0	0	0	0	0	0	0	0	0	0	0
McBride Bay	29-Mar-21	Chum	44	1.2	0	0	0	0	0	0	0	0	0	0	0	0	0	0	0	0	0	0	0
McBride Bay	29-Mar-21	Chum	42	1.0	0	0	0	0	0	0	0	0	0	0	0	0	0	0	0	0	0	0	0
McBride Bay	29-Mar-21	Chum	49	1.3	0	0	0	0	0	0	0	0	0	0	0	0	0	0	0	0	0	0	0
McBride Bay	29-Mar-21	Chum	52	1.7	0	0	0	0	0	0	0	0	0	0	0	0	0	0	0	0	0	0	0
McBride Bay	29-Mar-21	Chum	43	1.0	0	0	0	0	0	0	0	0	0	0	0	0	0	0	0	0	0	0	0
McBride Bay	29-Mar-21	Chum	40	0.8	0	0	0	0	0	0	0	0	0	0	0	0	0	0	0	0	0	0	0
McBride Bay	29-Mar-21	Chum	40	0.9	0	0	0	0	0	0	0	0	0	0	0	0	0	0	0	0	0	0	0
McBride Bay	29-Mar-21	Chum	46	1.5	0	0	0	0	0	0	0	0	0	0	0	0	0	0	0	0	0	0	0
McBride Bay	29-Mar-21	Chum	41	0.8	0	0	0	0	0	0	0	0	0	0	0	0	0	0	0	0	0	0	0
McBride Bay	29-Mar-21	Chum	36	0.6	0	0	0	0	0	0	0	0	0	0	0	0	0	0	0	0	0	0	0
McBride Bay	29-Mar-21	Chum	41	0.9	0	0	0	0	0	0	0	0	0	0	0	0	0	0	0	0	0	0	0
McBride Bay	29-Mar-21	Chum	45	1.1	0	0	0	0	0	0	0	0	0	0	0	0	0	0	0	0	0	0	0
McBride Bay	29-Mar-21	Chum	40	0.8	0	0	0	0	0	0	0	0	0	0	0	0	0	0	0	0	0	0	0
McBride Bay	29-Mar-21	Chum	38	0.5	0	0	0	0	0	0	0	0	0	0	0	0	0	0	0	0	0	0	0
McBride Bay	29-Mar-21	Chum	41	0.8	0	0	0	0	0	0	0	0	0	0	0	0	0	0	0	0	0	0	0
McBride Bay	29-Mar-21	Chum	37	0.6	0	0	0	0	0	0	0	0	0	0	0	0	0	0	0	0	0	0	0
McBride Bay	29-Mar-21	Chum	52	1.6	0	0	0	0	0	0	0	0	0	0	0	0	0	0	0	0	0	0	0
McBride Bay	29-Mar-21	Chum	44	1.1	0	0	0	0	0	0	0	0	0	0	0	0	0	0	0	0	0	0	0
McBride Bay	29-Mar-21	Chum	38	0.7	0	0	0	0	0	0	0	0	0	0	0	0	0	0	0	0	0	0	0
McBride Bay	29-Mar-21	Chum	35	0.5	0	0	0	0	0	0	0	0	0	0	0	0	0	0	0	0	0	0	0
McBride Bay	29-Mar-21	Chum	39	0.7	0	0	0	0	0	0	0	0	0	0	0	0	0	0	0	0	0	0	0
McBride Bay	29-Mar-21	Chum	39	0.7	0	0	0	0	0	0	0	0	0	0	0	0	0	0	0	0	0	0	0
McBride Bay	29-Mar-21	Chum	36	0.6	0	0	0	0	0	0	0	0	0	0	0	0	0	0	0	0	0	0	0
McBride Bay	29-Mar-21	Chum	50	1.5	0	0	0	0	0	0	0	0	0	0	0	0	0	0	0	0	0	0	0
McBride Bay	29-Mar-21	Chum	40	0.8	0	0	0	0	0	0	0	0	0	0	0	0	0	0	0	0	0	0	0
McBride Bay	29-Mar-21	Chum	37	0.6	0	0	0	0	0	0	0	0	0	0	0	0	0	0	0	0	0	0	0
McBride Bay	29-Mar-21	Chum	36	0.5	0	0	0	0	0	0	0	0	0	0	0	0	0	0	0	0	0	0	0
McBride Bay	29-Mar-21	Chum	34	0.4	0	0	0	0	0	0	0	0	0	0	0	0	0	0	0	0	0	0	0
McBride Bay	29-Mar-21	Chum	46	1.3	0	0	0	0	0	0	0	0	0	0	0	0	0	0	0	0	0	0	0
McBride Bay	29-Mar-21	Chum	36	0.6	0	0	0	0	0	0	0	0	0	0	0	0	0	0	0	0	0	0	0
Zeballos Inlet	12-Apr-21	Chum	35	0.6	0	0	0	0	0	0	0	0	0	0	0	0	0	0	0	0	0	0	0
Zeballos Inlet	12-Apr-21	Chum	35	0.5	0	0	0	0	0	0	0	0	0	0	0	0	0	0	0	0	0	0	0
Zeballos Inlet	12-Apr-21	Chum	36	0.6	0	0	0	0	0	0	0	0	0	0	0	0	0	0	0	0	0	0	0

SITE	DATE COLLECTED	FISH SPECIES	LENGTH IN MM	WEIGHT IN G	LEP Co	LEP C1	LEP C2	LEP PAM	LEP PAF	LEP AM	LEP AF	CAL Co	CAL C1	CAL C2	CAL C3	CAL C4	CAL PAM	CAL_PAF	CAL AM	CAL AF	TOT LICE ID	TOT LEP	TOT CAL
Zeballos Inlet	12-Apr-21	Chum	38	0.7	0	0	0	0	0	0	0	0	0	0	0	0	0	0	0	0	0	0	0
Zeballos Inlet	12-Apr-21	Chum	40	0.8	0	0	0	0	0	0	0	0	0	0	0	0	0	0	0	0	0	0	0
Zeballos Inlet	12-Apr-21	Chum	36	0.6	0	0	0	0	0	0	0	0	0	0	0	0	0	0	0	0	0	0	0
Zeballos Inlet	12-Apr-21	Chum	34	0.5	0	0	0	0	0	0	0	0	0	0	0	0	0	0	0	0	0	0	0
Zeballos Inlet	12-Apr-21	Chum	35	0.6	0	0	0	0	0	0	0	0	0	0	0	0	0	0	0	0	0	0	0
Zeballos Inlet	12-Apr-21	Chum	36	0.5	0	0	0	0	0	0	0	0	0	0	0	0	0	0	0	0	0	0	0
Zeballos Inlet	12-Apr-21	Chum	33	0.4	0	0	0	0	0	0	0	0	0	0	0	0	0	0	0	0	0	0	0
Zeballos Inlet	12-Apr-21	Chum	35	0.5	0	0	0	0	0	0	0	0	0	0	0	0	0	0	0	0	0	0	0
Zeballos Inlet	12-Apr-21	Chum	34	0.4	0	0	0	0	0	0	0	0	0	0	0	0	0	0	0	0	0	0	0
Zeballos Inlet	12-Apr-21	Chum	38	0.7	0	0	0	0	0	0	0	0	0	0	0	0	0	0	0	0	0	0	0
Zeballos Inlet	12-Apr-21	Chum	35	0.6	0	0	0	0	0	0	0	0	0	0	0	0	0	0	0	0	0	0	0
Zeballos Inlet	12-Apr-21	Chum	38	0.7	0	0	0	0	0	0	0	0	0	0	0	0	0	0	0	0	0	0	0
Zeballos Inlet	12-Apr-21	Chum	40	0.9	0	0	0	0	0	0	0	0	0	0	0	0	0	0	0	0	0	0	0
Zeballos Inlet	12-Apr-21	Chum	35	0.5	0	0	0	0	0	0	0	0	0	0	0	0	0	0	0	0	0	0	0
Zeballos Inlet	12-Apr-21	Chum	36	0.6	0	0	0	0	0	0	0	0	0	0	0	0	0	0	0	0	0	0	0
Zeballos Inlet	12-Apr-21	Chum	36	0.5	0	0	0	0	0	0	0	0	0	0	0	0	0	0	0	0	0	0	0
Zeballos Inlet	12-Apr-21	Chum	36	0.5	0	0	0	0	0	0	0	0	0	0	0	0	0	0	0	0	0	0	0
Zeballos Inlet	12-Apr-21	Chum	37	0.7	0	0	0	0	0	0	0	0	0	0	0	0	0	0	0	0	0	0	0
Zeballos Inlet	12-Apr-21	Chum	39	0.8	0	0	0	0	0	0	0	0	0	0	0	0	0	0	0	0	0	0	0
Zeballos Inlet	12-Apr-21	Chum	38	0.8	0	0	0	0	0	0	0	0	0	0	0	0	0	0	0	0	0	0	0
Zeballos Inlet	12-Apr-21	Chum	37	0.6	0	0	0	0	0	0	0	0	0	0	0	0	0	0	0	0	0	0	0
Zeballos Inlet	12-Apr-21	Chum	33	0.5	0	0	0	0	0	0	0	0	0	0	0	0	0	0	0	0	0	0	0
Zeballos Inlet	12-Apr-21	Chum	37	0.5	0	0	0	0	0	0	0	0	0	0	0	0	0	0	0	0	0	0	0
Zeballos Inlet	12-Apr-21	Chum	35	0.5	0	0	0	0	0	0	0	0	0	0	0	0	0	0	0	0	0	0	0
Zeballos Inlet	12-Apr-21	Chum	36	0.6	0	0	0	0	0	0	0	0	0	0	0	0	0	0	0	0	0	0	0
Zeballos Inlet	12-Apr-21	Chum	36	0.6	0	0	0	0	0	0	0	0	0	0	0	0	0	0	0	0	0	0	0
Zeballos Inlet	12-Apr-21	Chum	36	0.6	0	0	0	0	0	0	0	0	0	0	0	0	0	0	0	0	0	0	0
Esperanza Inlet	10-May-21	Chum	40	0.9		1		2													3	3	
Esperanza Inlet	10-May-21	Chum	39	0.7		1	1														2	2	
Esperanza Inlet	10-May-21	Chum	36	0.5	1	0	0	0	0	0	0	0	0	0	0	0	0	0	0	0	1	1	0
Esperanza Inlet	10-May-21	Chum	38	0.6	0	0	0	0	0	0	0	0	0	0	0	0	0	0	0	0	0	0	0
Esperanza Inlet	10-May-21	Chum	40	0.8	1	3	2	5	0	0	0	0	0	0	0	0	0	0	0	0	11	11	0
Esperanza Inlet	10-May-21	Chum	45	1.1	0	1	0	1	0	0	0	0	0	1	0	0	0	0	0	0	3	2	1
Esperanza Inlet	10-May-21	Chum	39	0.7	1	4	0	0	0	0	0	0	0	0	0	0	0	0	0	0	5	5	0
Esperanza Inlet	10-May-21	Chum	41	0.9	1	0	0	0	0	0	0	0	0	0	0	0	0	0	0	0	1	1	0
Esperanza Inlet	10-May-21	Chum	43	1.1	0	0	1	1	0	0	0	0	0	0	0	0	0	0	0	0	2	2	0
Zeballos Inlet	10-May-21	Chum	33	0.4	0	1	0	0	0	0	0	0	0	0	0	0	0	0	0	0	1	1	0
Zeballos Inlet	10-May-21	Chum	37	0.6	0	0	0	0	0	0	0	0	0	0	0	0	0	0	0	0	0	0	0
Zeballos Inlet	10-May-21	Chum	35	0.5	0	2	0	0	0	0	0	0	0	0	0	0	0	0	0	0	2	2	0
Zeballos Inlet	10-May-21	Chum	34	0.5	0	0	0	0	0	0	0	0	0	0	0	0	0	0	0	0	0	0	0
Zeballos Inlet	10-May-21	Chum	36	0.7	1	1	0	0	0	0	0	0	0	0	0	0	0	0	0	0	2	2	0

SITE	DATE COLLECTED	FISH SPECIES	LENGTH IN MM	WEIGHT IN G	LEP Co	LEP C1	LEP C2	LEP PAM	LEP PAF	LEP AM	LEP AF	CAL Co	CAL C1	CAL C2	CAL C3	CAL C4	CAL PAM	CAL_PAF	CAL AM	CAL AF	TOT LICE ID	TOT LEP	TOT CAL
Zeballos Inlet	10-May-21	Chum	36	0.6	1	0	0	0	0	0	0	0	0	0	0	0	0	0	0	0	1	1	0
Zeballos Inlet	10-May-21	Chum	37	0.6	0	1	0	0	0	0	0	0	0	0	0	0	0	0	0	0	1	1	0
Zeballos Inlet	10-May-21	Chum	38	0.8	0	1	0	0	0	0	0	0	0	0	0	0	0	0	0	0	1	1	0
Zeballos Inlet	10-May-21	Chum	36	0.5	0	1	0	0	0	0	0	0	0	0	0	0	0	0	0	0	1	1	0
Zeballos Inlet	10-May-21	Chum	35	0.6	1	0	0	0	0	0	0	0	0	0	0	0	0	0	0	0	1	1	0
Zeballos Inlet	10-May-21	Chum	35	0.6	0	0	0	0	0	0	0	0	0	0	0	0	0	0	0	0	0	0	0
Zeballos Inlet	10-May-21	Chum	40	0.9	0	1	2	0	0	0	0	0	0	0	0	0	0	0	0	0	3	3	0
Zeballos Inlet	10-May-21	Chum	38	0.7	0	1	0	0	0	0	0	0	0	0	0	0	0	0	0	0	1	1	0
Barr Creek	10-May-21	Chum	45	1.2	2	1	1	0	0	0	0	0	0	0	0	0	0	0	0	0	4	4	0
Barr Creek	10-May-21	Chum	59	2.4	0	0	0	0	2	0	0	0	0	0	0	0	0	0	0	0	2	2	0
Barr Creek	10-May-21	Chum	49	1.6	1	2	0	0	0	0	0	0	0	0	0	0	0	0	0	0	3	3	0
Barr Creek	10-May-21	Chum	54	2.3	0	0	0	0	0	0	0	0	0	0	0	0	0	0	0	0	0	0	0
Barr Creek	10-May-21	Chum	48	1.4	1	2	3	0	0	0	0	0	0	0	0	0	0	0	0	0	6	6	0
Barr Creek	10-May-21	Chum	56	2.2	0	0	1	1	1	0	0	0	0	0	0	0	0	0	0	0	3	3	0
Barr Creek	10-May-21	Chum	47	1.4	0	3	2	0	0	0	0	0	0	0	0	0	0	0	0	0	5	5	0
Barr Creek	10-May-21	Chum	45	1.2	0	0	2	0	0	0	0	0	0	0	0	0	0	0	0	0	2	2	0
Barr Creek	10-May-21	Chum	43	1	2	0	1	0	0	0	0	0	0	0	0	0	0	0	0	0	3	3	0
Barr Creek	10-May-21	Chum	55	2.4	1	1	2	0	2	0	0	0	0	0	0	0	0	0	0	0	6	6	0
Barr Creek	10-May-21	Chum	53	2.3	3	1	0	1	0	0	0	0	0	0	0	0	0	0	0	0	5	5	0
Barr Creek	10-May-21	Chum	48	1.6	1	0	2	0	0	0	0	0	0	0	1	0	0	0	0	0	4	3	1
Barr Creek	10-May-21	Chum	42	1	0	1	0	0	0	0	0	0	0	0	0	0	0	0	0	0	1	1	0
Barr Creek	10-May-21	Chum	47	1.5	0	0	1	0	2	0	0	0	0	0	0	0	0	0	0	0	3	3	0
Barr Creek	10-May-21	Chum	56	2.6	0	1	2	1	4	0	0	0	0	0	0	0	0	0	0	0	8	8	0
Barr Creek	10-May-21	Chum	60	3	0	0	1	0	0	0	0	0	0	0	0	0	0	0	0	0	3	3	0
Barr Creek	10-May-21	Chum	45	1.3	1	3	0	0	1	0	0	0	0	0	0	0	0	0	0	0	5	5	0
Saltery Bay	10-May-21	Chum	41	0.7	0	3	0	0	0	0	0	0	0	0	0	0	0	0	0	0	3	3	0
Saltery Bay	10-May-21	Chum	43	0.8	0	0	0	0	0	0	0	0	0	0	0	0	0	0	0	0	0	0	0
Saltery Bay	10-May-21	Chum	43	0.9	0	1	0	0	0	0	0	0	0	0	0	0	0	0	0	0	1	1	0
Saltery Bay	10-May-21	Chum	39	0.6	0	0	0	0	0	0	0	0	0	0	0	0	0	0	0	0	0	0	0
Saltery Bay	10-May-21	Chum	37	0.4	0	0	0	0	0	0	0	0	0	0	0	0	0	0	0	0	0	0	0
Saltery Bay	10-May-21	Chum	41	0.7	0	0	0	0	0	0	0	0	0	0	0	0	0	0	0	0	0	0	0
Saltery Bay	10-May-21	Chum	42	0.7	0	4	0	0	0	0	0	0	0	0	0	0	0	0	0	0	4	4	0
Saltery Bay	10-May-21	Chum	41	0.8	0	8	0	0	0	0	0	0	0	0	0	0	0	0	0	0	8	8	0
Saltery Bay	10-May-21	Chum	38	0.7	0	0	0	0	0	0	0	0	0	0	0	0	0	0	0	0	0	0	0
Saltery Bay	10-May-21	Chum	39	0.6	0	3	0	0	0	0	0	0	0	0	0	0	0	0	0	0	3	3	0
Saltery Bay	10-May-21	Chum	38	0.6	0	2	0	0	0	0	0	0	0	0	0	0	0	0	0	0	2	2	0
Saltery Bay	10-May-21	Chum	39	0.6	0	0	0	0	0	0	0	0	0	0	0	0	0	0	0	0	0	0	0
Saltery Bay	10-May-21	Chum	41	0.7	0	2	0	0	0	0	0	0	0	0	0	0	0	0	0	0	2	2	0
Saltery Bay	10-May-21	Chum	38	0.6	0	0	0	0	0	0	0	0	0	0	0	0	0	0	0	0	0	0	0
Saltery Bay	10-May-21	Chum	40	0.7	0	1	0	0	0	0	0	0	0	0	0	0	0	0	0	0	1	1	0
Saltery Bay	10-May-21	Chum	43	0.8	0	1	0	0	0	0	0	0	0	0	0	0	0	0	0	0	1	1	0

SITE	DATE COLLECTED	FISH SPECIES	LENGTH IN MM	WEIGHT IN G	LEP Co	LEP C1	LEP C2	LEP PAM	LEP PAF	LEP AM	LEP AF	CAL Co	CAL C1	CAL C2	CAL C3	CAL C4	CAL PAM	CAL_PAF	CAL AM	CAL AF	TOT LICE ID	TOT LEP	TOT CAL
Saltery Bay	10-May-21	Chum	43	0.8	0	0	0	0	0	0	0	0	0	0	0	0	0	0	0	0	0	0	0
Saltery Bay	10-May-21	Chum	40	0.8	0	2	0	0	0	0	0	0	0	0	0	0	0	0	0	0	2	2	0
Saltery Bay	10-May-21	Chum	39	0.7	0	0	0	0	0	0	0	0	0	0	0	0	0	0	0	0	0	0	0
Saltery Bay	10-May-21	Chum	43	0.9	0	1	0	0	0	0	0	0	0	0	0	0	0	0	0	0	1	1	0
Saltery Bay	10-May-21	Chum	38	0.6	0	0	0	0	0	0	0	0	0	0	0	0	0	0	0	0	0	0	0
Saltery Bay	10-May-21	Chum	40	0.7	0	2	0	0	0	0	0	0	0	0	0	0	0	0	0	0	2	2	0
Saltery Bay	10-May-21	Chum	38	0.6	0	0	0	0	0	0	0	0	0	0	0	0	0	0	0	0	0	0	0
Saltery Bay	10-May-21	Chum	40	0.7	0	0	0	0	0	0	0	0	0	0	0	0	0	0	0	0	0	0	0
Saltery Bay	10-May-21	Chum	42	0.8	0	2	0	0	0	0	0	0	0	0	0	0	0	0	0	0	2	2	0
Saltery Bay	10-May-21	Chum	38	0.6	0	0	0	0	0	0	0	0	0	0	0	0	0	0	0	0	0	0	0
Saltery Bay	10-May-21	Chum	38	0.5	0	0	0	0	0	0	0	0	0	0	0	0	0	0	0	0	0	0	0
Saltery Bay	10-May-21	Chum	43	0.8	0	1	0	0	0	0	0	0	0	0	0	0	0	0	0	0	1	1	0
Saltery Bay	10-May-21	Chum	43	0.8	0	0	0	0	0	0	0	0	0	0	0	0	0	0	0	0	0	0	0
Saltery Bay	10-May-21	Chum	40	0.7	0	0	0	0	0	0	0	0	0	0	0	0	0	0	0	0	0	0	0