

# Wild Juvenile Salmonid Monitoring Program 2021 Muchalat Inlet, Nootka Sound, BC

*Report Date: June 21, 2021*

***Prepared For:***

*Grieg Seafood BC Ltd.  
106 – 1180 Ironwood Street  
Campbell River, BC  
V9W 5P7*



1310 Marwalk Cres  
Campbell River, BC.  
V9W 5X1  
phone: (250) 287-2462  
fax: (250) 287-2452  
email: [info@mainstreambio.ca](mailto:info@mainstreambio.ca)  
[www.mainstreambio.ca](http://www.mainstreambio.ca)



## Summary

Beach seine sampling was conducted on behalf of Grieg Seafood in Muchalat Inlet in Nootka Sound, BC in 2021. Sampling was completed to monitor sea lice abundance, prevalence, and intensity on juvenile wild salmon within Nootka Sound in support of the Aquaculture Stewardship Certification process for Grieg Seafood's finfish aquaculture sites in the area.

Sampling was conducted during five separate sampling events in March, April, and May 2021, selected to coincide with the peak outmigration period of juvenile salmonids. Sampling was completed at 11 sites within Nootka Sound, BC. The sites were selected based on historical fish capture results and location relative to existing aquaculture sites in the area.

Thirty individuals from each target fish species or the total number of captured individuals from each target species (if less than 30 were captured) were collected from each of the 11 sites during the sampling events. Total catch numbers of each species were recorded. Water quality measurements including surface temperature and salinity were recorded at each site during each sampling event.

Collected sample fish were frozen and analyzed in the lab for the presence of sea lice by Mainstream Biological Consulting. Sea lice observed on the individual fish specimens during laboratory analysis were initially identified as either *Lepeophtheirus spp.* or *Caligus sp.* These lice are assumed to be *L. salmonis* and *C. clemensi* due to the lack of documented infestation of Pacific salmon by other species. The lice were recorded by life stage and the sex of pre-adult or adult motile lice was determined.

This data summary report documents the observed sea lice infestation rate on retained wild juvenile salmon collected in Nootka Sound, BC in 2021. A total of 675 fish samples underwent lab analysis for sea lice infestation in 2021 including 559 chum, 11 coho, and 97 chinook salmon. Eight threespine stickleback were captured during sampling that were also retained for sea lice analysis in the lab. No pink, sockeye or Atlantic salmon were captured during sampling completed in Nootka Sound in 2021. A total of six individuals were found to be infested with sea lice in the total sample population, resulting in a calculated sea lice prevalence of 0.9 % in 2021. A total of eight sea lice were found during laboratory analysis resulting in an abundance of 0.01 and an average intensity of 1.3 for the sample population.

Chum salmon smolts were captured in significantly greater numbers than any other species. A total of 3034 chum salmon were captured, representing 96.3 % of all captured salmonids. Of the 3034 chum captured, 559 were kept for lab analysis for sea lice infestation. A total of six chum were found to be infested with a total of eight *Lepeophtheirus salmonis* lice resulting in a calculated prevalence of 1.1 %, abundance of 0.01 and an average intensity of 1.3 for the chum salmon sample population.

Lab analysis of the 11 coho salmon samples collected in Nootka Sound in 2021 did not find any *Lepeophtheirus salmonis* or *Caligus clemensi* sea lice on any of the retained samples. Lab analysis of the 97 chinook salmon samples collected in Nootka Sound in 2021 also did not find any *Lepeophtheirus salmonis* or *Caligus clemensi* sea lice on the retained chinook samples.

A comparison of the prevalence and abundance of sea lice species found on chum salmon was completed for sample data from 2004 to 2021 collected in Nootka Sound, BC. This data is presented in a summary table in Appendix IV.

## Table of Contents

<b>Summary.....</b>	<b>i</b>
<b>Table of Contents.....</b>	<b>iii</b>
<b>List of Figures .....</b>	<b>iv</b>
<b>List of Tables.....</b>	<b>v</b>
<b>1.0 Introduction.....</b>	<b>1</b>
<b>2.0 Methods.....</b>	<b>3</b>
2.1 Site Locations .....	3
2.2 Field Procedures.....	5
2.3 Laboratory Procedures .....	6
2.4 Data Analysis.....	7
<b>3.0 Results .....</b>	<b>9</b>
3.1 Water Quality Parameters.....	9
3.2 Fish Sample Composition .....	10
3.3 Fish Sample Size Statistics.....	12
3.3.1 <i>Chum Salmon</i> .....	12
3.3.2 <i>Coho Salmon</i> .....	12
3.3.3 <i>Chinook Salmon</i> .....	12
3.3.4 <i>Threespine Stickleback</i> .....	12
3.4 Sea Lice Infestation Rates .....	13
3.4.1 <i>Infestation Rates on Chum Salmon</i> .....	13
3.4.2 <i>Infestation Rates on Coho Salmon</i> .....	14
3.4.3 <i>Infestation Rates on Chinook Salmon</i> .....	15
3.5 Infestation by Sea Lice Species .....	17
3.5.1 <i>Infestation by Life Stage on Chum Salmon</i> .....	17
<b>4.0 Conclusions .....</b>	<b>19</b>
<b>5.0 References .....</b>	<b>20</b>
<b>Appendix I – Field Data .....</b>	<b>I</b>
<b>Appendix II – Capture and Collection Sample Totals .....</b>	<b>III</b>
<b>Appendix III – Sea Lice Analysis .....</b>	<b>V</b>
<b>Appendix IV – Historical Comparison (2004-2021).....</b>	<b>XXII</b>

## **List of Figures**

- Figure 1: An overview map showing the location of Nootka Sound on the west coast of northern Vancouver Island, BC..... 1
- Figure 2: The locations of the 11 beach seine sites in Nootka Sound, BC sampled in 2021.....4

## List of Tables

Table 1:	The site number and locations of the 11 beach seine sites where fish were collected for sea lice analysis in Nootka Sound, BC in 2021.....	3
Table 2:	Water quality parameters collected during 2021 beach seine sampling in Nootka Sound, BC.....	9
Table 3:	The total of collected individuals of each fish species captured in Nootka Sound, BC between March 30 and May 28, 2021, and the percentage of the total capture population that they represent.....	10
Table 4:	The number of captured fish (Capture Total) and the number of individual fish collected (Sample Total) from each of the 11 sample sites in Nootka Sound, BC between March 30 and May 28, 2021.....	11
Table 5:	Average lengths of chum, coho, chinook and threespine stickleback collected in Nootka Sound in 2021, summarized by sampling event.....	12
Table 6:	Average weights of chum, coho, chinook and threespine stickleback collected in Nootka Sound in 2021, summarized by sampling event.....	13
Table 7:	Results of analysis for sea lice infestation on fish collected by beach seine in Nootka Sound, BC in 2021.....	13
Table 8:	Total number, prevalence, abundance, and intensity of sea lice infestation on chum salmon collected in Nootka Sound, BC in 2021 summarized by sampling site.....	14
Table 9:	Total number, prevalence, abundance, and intensity of sea lice infestation on coho salmon collected in Nootka Sound, BC in 2021 summarized by sampling site.....	15
Table 10:	Total number, prevalence, abundance, and intensity of sea lice infestation on chinook salmon collected in Nootka Sound, BC in 2021 summarized by sampling site.....	16
Table 11:	The number of <i>Lepeophtheirus salmonis</i> and <i>Caligus clemensi</i> in each life stage identified on the chum salmon sample population from Nootka Sound BC, in 2021. LEP = <i>Lepeophtheirus salmonis</i> CAL= <i>Caligus clemensi</i> .....	17
Table 12:	The number of sea lice found on chum salmon collected in Nootka Sound, BC in 2021 summarized by sampling site. LEP = <i>Lepeophtheirus salmonis</i> CAL= <i>Caligus clemensi</i> .....	18

## 1.0 Introduction

Beach seine sampling was conducted at 11 sites in Nootka Sound, BC (Figure 1) to capture wild juvenile salmon on behalf of Grieg Seafood BC. Retained fish were analyzed in the lab for sea lice infestation. Five sampling events were completed over a nine week period between March 30, 2021 and May 28, 2021. Timing was selected to coincide with the estimated peak outmigration of juvenile salmonids in Muchalat Inlet, BC.

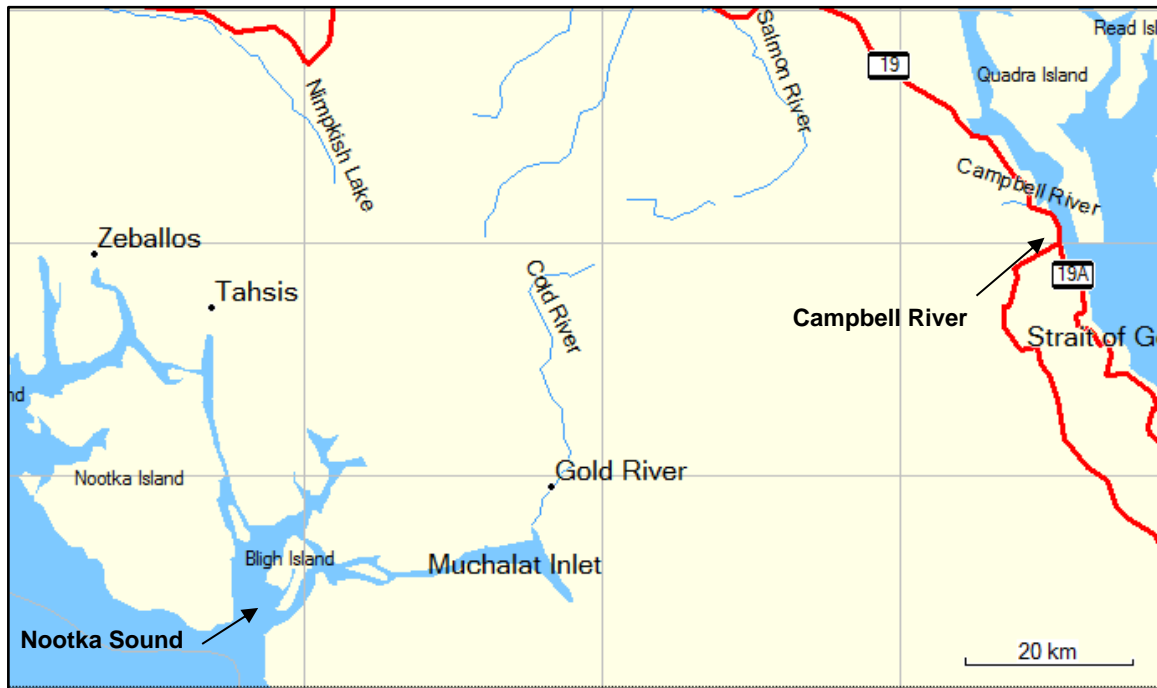


Figure 1: An overview map showing the location of Nootka Sound on the west coast of northern Vancouver Island, BC.

Parasitic copepods from the family Caligidae (sea lice) found in the coastal waters of British Columbia are divided into two genera: *Lepeophtheirus* and *Caligus*. Eleven species of *Lepeophtheirus* have been identified infesting fish in the Pacific Ocean, while only one species of *Caligus* (*Caligus clemensi*) has been identified (Margolis and Arthur 1979; McDonald and Margolis, 1995). *C. clemensi* infest an extremely wide range of natural hosts in the marine environment including salmonids and non-salmonids; while *L. salmonis* natural hosts on the Pacific coast have been found to include Pacific salmon, threespine stickleback and Pacific herring. During this analysis, *Lepeophtheirus* spp. sea lice found on salmonid specimens were assumed to be *L. salmonis* due to the lack of documented infestations of Pacific salmon by other *Lepeophtheirus* lice species (Jones and Nemec, 2004).

Both Caligidae genera have similar life histories and developmental stages (Kabata, 1972; Johnson and Albright, 1991a). Sea lice hatch from eggs and go through two free-swimming naupili stages before developing into an infectious free-swimming copepodid. The copepodids attach to their host and develop through several chalimus stages. The chalimus are non-motile and are attached to their host by a frontal filament. The final chalimus stage terminates as the sea lice become motile and are no longer attached to

their hosts by the frontal filament. The sea lice can now move freely on the fish as they develop through a pre-adult stage before becoming reproductively viable adults.

Water temperature and salinity are two environmental variables known to influence sea lice development, growth, survival and reproductive rate. In British Columbia, surface seawater temperatures range from approximately 6 °C to 13 °C. Research on sea lice abundance conducted in the Broughton Archipelago and elsewhere on the coast of British Columbia indicates that surface water temperature during the winter months does not appear to hinder the season abundance of *L. salmonis* (Saksida et al. 2007a, b). The rate of development and the generation times for *C. elongates* are strongly temperature dependent (Tully, 1992) and although this research has not been conducted, similar relationships with water temperature may be expected for *C. clemensi* (Jones and Johnson, 2015). Survival and development of *L. salmonis* is optimal in high salinity seawater. Under laboratory conditions copepodid survival was limited to conditions where salinity was greater than 10 ppt (Johnson and Albright, 1991b).

Grieg Seafood requested monitoring of sea lice abundance, prevalence, and intensity on juvenile wild salmon in Nootka Sound, BC in support of Aquaculture Stewardship Certification for their aquaculture sites within the area. This data summary report documents the observed sea lice infestation rates on juvenile salmonids collected in Nootka Sound in 2021. This is the eighteenth year that sampling was completed in Nootka Sound by Grieg Seafood BC.



## 2.0 Methods

Juvenile salmonids were collected from 11 sites in Nootka Sound, BC. These sites were chosen in consultation with DFO and Grieg Seafood BC Ltd. as locations that had historically yielded consistent out-migrating juvenile salmon catch results and were in close proximity to the six established finfish aquaculture tenures in the area held by Grieg Seafood BC Ltd. The sites were sampled five times in 2021 between March 30 and May 28.

### 2.1 Site Locations

Of the 11 sampling sites, eight sites were located within Muchalat Inlet, two sites in Zuciarie Channel and one site in Hanna Channel (Figure 2). Field GPS coordinates collected at the sampling sites are provided in Table 1.

Table 1: The site number and locations of the 11 beach seine sites where fish were collected for sea lice analysis in Nootka Sound, BC in 2021.

Site Name	Coordinates		
	Site #	Latitude North	Longitude West
McCurdy Creek	1	49° 40.288	126° 11.174
North Muchalat	2	49° 38.993	126° 17.551
Gore Island	3	49° 39.090	126° 24.456
Williamson	4	49° 39.735	126° 24.899
Hanna Channel	5	49° 40.605	126° 28.237
Concepcion Point	6	49° 39.217	126° 29.197
Zuciarie Channel	7	49° 37.430	126° 29.039
East Mooyah	8	49° 38.265	126° 25.780
Silverado Creek	9	49° 37.859	126° 22.093
Ous Point	10	49° 38.075	126° 21.271
Houston River	11	49° 38.279	126° 18.258

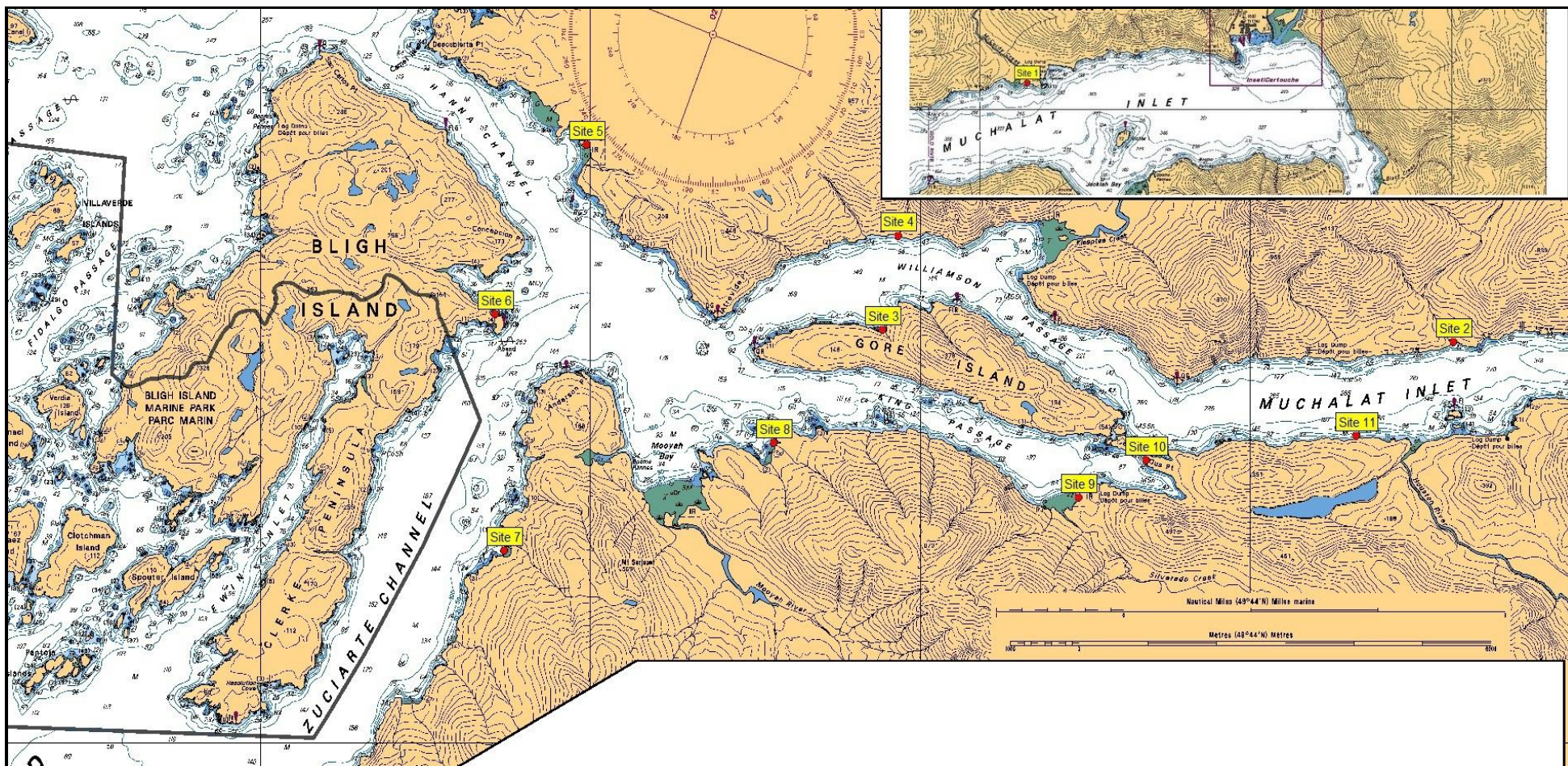


Figure 2: The locations of the 11 beach seine sites in Nootka Sound, BC sampled in 2021.

## 2.2 Field Procedures

Procedures used by Mainstream Biological Consulting during 2021 sampling were adapted from procedures for beach seining, fish collection and field data recording utilized by the Department of Fisheries and Oceans (DFO).

An 18 ft Boston Whaler powered by a 60 horsepower outboard motor was used to access sampling sites. A 150 ft (45.7 m) long by 12 ft (3.7 m) deep beach seine net was used to capture specimens. The net was constructed in three 50 ft (15.2 m) sections, with the centre bunt consisting of one-quarter inch diameter diamond mesh, and two side panels (wings) consisting of half-inch diameter diamond mesh. Floats were attached every 30 cm along the top-line and a lead line provided weight along the bottom of the net.

A three person crew conducted the beach seine sets. All beaches were approached slowly by boat and one crewmember was put ashore with one end of the net towline. The onshore crewmember held the towline at one side of the sample site, while the second crewmember ensured the net deployed smoothly off the bow or side of the boat as the third crewmember backed the boat in a wide semicircle towards the opposite side of the sample site. When the net was fully deployed, the second crewmember stepped into the shallow water with the towline or tossed it to the awaiting crewmember on shore. A slow retrieval of the net began immediately.

As the net was retrieved, the probe of an Oakton Salt 6+ meter was placed in a cup with surface water collected at the stern end of the boat to collect salinity and water temperature data.

Crewmembers retrieved the net evenly from opposite ends, ensuring that the lead line remained as close to the bottom as possible. Retrieved netting was piled on the beach above the water level. As the retrieval reached the net bunt, the lead line was retrieved at a faster rate than the floats to allow the netting of the bunt to form a bag under any captured fish. The lead line was then pulled up onto the beach above the water level. One crewmember worked their way around the outside of the net in the shallow water to ensure the floats stayed above the surface of the water. In this manner a small, shallow bag formed from the bunt of the net contained the captured fish in the water so that they could be sampled.

The two shore crew members collected individual fish from the bunt to ensure that captured fish remained in the net for as short a period of time as possible. The net was manipulated as necessary in response to changing tides to ensure the captured fish remained in sufficient water to minimize contact with the net or with other fish.

Where possible, a total of 30 individuals from each target species were retained for sea lice infestation analysis. If less than 30 individuals of a target species were captured, all the captured fish were retained. Individual fish were scooped into an appropriately sized whirlpac bag. Handling of fish was kept to a minimum.

Once all the fish for retention were collected, a total catch number was recorded for each species. Any fish remaining in the net were counted or estimated (if more than 300 individuals were present) and released. The total of fish remaining in the net was added to the number of retained individuals to calculate a total capture number for a given species.



A standardized field form was used to record the following information for each beach seine set:

- Site number (Site 1-11)
- Date
- Time at the end of the individual fish collection
- Comments on weather and oceanic conditions
- Total capture and retained fish numbers for each specimen group
- Water temperature (°C) and salinity (ppt) to one decimal place

Retained fish from each site were packaged separately in re-sealable bags and labelled with the site number (Site 1-11) and the date. Sample bags were stored on ice in a cooler while on board the boat and transferred to a portable freezer immediately upon return to shore.

Following each set the net was reloaded onto the bow of the boat. Crewmembers scanned the net for obvious holes, which were repaired immediately if found.

Sampling procedures were repeated at each of the 11 sample sites.

## **2.3 Laboratory Procedures**

Laboratory procedures for sea lice analysis were adapted from procedures demonstrated by Sheila Dawe and Eliah Kim at the Pacific Biological Station in Nanaimo, BC, during sea lice identification training that was conducted on April 1, 2004. Additional sea lice identification training by Paul Callow was conducted at the Pacific Biological Station in September 2007.

Fish samples were thawed immediately prior to analysis. Individual fish were identified to species and counted. Results of the lab identification and count were compared to the reported data found on the field data sheets to identify any errors.

A standardized data sheet was used to record sea lice analysis results for each site. The site and week number, sample date and number of fish and specimen groups present were recorded. The date of the lab analysis was also noted.

Once thawed, individual fish were removed from their bag using a pair of forceps at the caudal peduncle and placed in a petri dish. Each bag was labelled with an individual fish identification number (1 – 675). Each fish was then scanned for the presence of sea lice under a stereoscopic dissection microscope. The microscope was set at a magnification of 20X for the preliminary survey of each fish sample, and magnification was increased to up to 40X during individual sea lice identification.

Microscopic analysis of each individual fish began at the anterior end of the right side of the specimen. The head was examined first, after which a scan was made along the dorsal half of the specimen working towards the posterior end and the tail. The dorsal fin and caudal fin were lifted and expanded with a pair of forceps to check for lice. From the posterior end a return scan was made along the ventral half of the specimen back to the head. The anal fin, pelvic fin and pectoral fin were lifted and expanded and the operculum was lifted. The fish was then flipped using a pair of forceps at the caudal peduncle and the procedure was repeated on the opposite side of the specimen. Additional scans were made longitudinally down the fish if the entire depth of the fish could not be seen in a single pass. Any sea lice observed on the fish were removed and placed in a petri dish of saline solution.

Each Whirl-pac bag was visually inspected after the removal of the fish for the presence of pre-adult or adult sea lice that may have become dislodged during handling. Any sea lice found in the sample bags were identified under the microscope using the same characteristics outlined above. These “loose” sea lice were recorded on the data sheet with the data for the corresponding specimen and it was assumed that the lice had come from that individual.

Sea lice were identified using characteristics outlined by Kabata (1972) and Johnson and Albright (1991a). Sea lice observed on individual fish were identified as either non-motile chalimus (including copepodid), or motile pre-adults and adults. Non-motile sea lice were identified as one of two chalimus stages for *L. salmonis* (Hamre et al., 2013) or four chalimus stages for *C. clemensi*. Motile lice, either pre-adults or adults, were identified as either *L. salmonis* or *C. clemensi* and the sex of the louse was determined.

Chalimus were identified to species primarily by characteristics of the frontal filament. However, size, shape, genital development, and leg development were used as secondary identifying characteristics for speciation as well as primary indicators for life stage identification. Motile sea lice were identified to species by the presence or absence of lunules. If lunules were absent the louse was identified as *Lepeophtheirus* spp. The louse was identified as *Caligus* spp. if lunules were present.

Sea lice found on captured specimens have been assumed to be either *L. salmonis* or *C. clemensi* due to the lack of documented infestations of Pacific salmon by other species of sea lice (Jones and Nemec, 2004).

After microscopic analysis individual fish specimens were measured (fork length for salmonids, total length for non-salmonids) in millimetres and weighed to the nearest tenth of a gram. Lengths and weights were recorded on the data sheet with the specimen's corresponding sea lice analysis results. The fish were then returned to their respective individual bags and repackaged in the large re-sealable bags by site before being refrozen.

To allow for quality assurance of sea lice identification, all sea lice were placed in vials labelled with the corresponding fish identification number and preserved in 70% isopropyl alcohol. Ten percent of the deloused fish specimens were randomly selected by specimen number and retained. Both the preserved lice and retained deloused fish specimens will be kept at the office of Mainstream Biological Consulting in Campbell River for five years.

## 2.4 Data Analysis

Surface water quality data collected for temperature and salinity was summarized to report the minimum and maximum values and averages for each sample week.

Beach seine fish sample composition was summarized by species and site for each week. The fork lengths and weights of the samples were summarized to present minimum and maximum values as well as averages. Sea lice infestation rates, including the overall number of infested fish and the number of sea lice identified, were determined for the sample population, and prevalence and abundance of sea lice were calculated. Prevalence was defined as the number of host fish found to have one or more sea lice compared to the total number of host fish examined, while abundance was defined as the total number of sea lice observed compared to the total number of host fish examined. The intensity of sea lice infestation, as described by the average number of sea lice found on a single salmon infested was summarized. Average intensity was

calculated by dividing the total number of sea lice identified by the number of infested fish.

Statistical analysis of the spatial and temporal distribution of sea lice was not conducted. Spatial and temporal analysis has been limited to the simple presentation and discussion of the number of sea lice found on fish specimens collected from each site during each of the sampling events.

### 3.0 Results

The following sections outline the results of beach seine collection and inspection of juvenile salmonids collected from Nootka Sound, BC in 2021. Water quality field data is presented in Appendix I, beach seine fish capture data is included in Appendix II and data on the fish sample population including sea lice lab analysis results are listed in Appendix III.

#### 3.1 Water Quality Parameters

Surface measurements of water temperature and salinity taken during beach seining at each of the 11 sites during the five sample periods are summarized in Table 2 and the complete dataset is included in Appendix I.

Recorded surface water temperatures ranged from a low of 5.3 °C recorded at Site 2 on March 30, 2021 to a high of 14.5 °C recorded at Site 8 on May 28, 2021 (Table 2; Appendix I). Calculated weekly average surface water temperatures increased over the sampling period, beginning at 7.7°C for March 30, increasing to 10.5 °C for April 13, increasing to 11.5 °C for April 27, then 12.6 °C for May 11, and finally increasing to a maximum weekly average temperature of 12.7 °C on May 28, 2021.

Recorded surface water salinity ranged from a low of 2.4 ppt recorded at Site 1 on April 27, to a high of 25.4 ppt recorded at Site 3 on April 13, 2021 (Table 2; Appendix I). The calculated weekly average surface water salinity varied over the sampling period (Table 2).

Table 2: Water quality parameters collected during 2021 beach seine sampling in Nootka Sound, BC.

Site	March 30, 2021		April 13, 2021		April 27, 2021		May 11, 2021		May 28, 2021	
	Temp. (°C)	Salinity (ppt)	Temp. (°C)	Salinity (ppt)	Temp. (°C)	Salinity (ppt)	Temp. (°C)	Salinity (ppt)	Temp. (°C)	Salinity (ppt)
1	6.6	6.4	8.2	9.8	10.5	2.4	10.9	5.8	11.1	3.5
2	5.3	5.0	7.8	10.0	9.0	2.5	9.0	4.4	10.8	3.7
3	6.6	11.9	10.0	25.4	11.8	10.7	12.3	15.9	11.0	5.3
4	5.7	9.1	9.5	15.3	11.6	7.5	12.0	12.9	12.4	8.3
5	7.4	13.6	9.2	23.4	12.4	13.4	13.4	16.4	12.5	12.3
6	7.2	12.3	11.2	20.6	12.3	11.5	12.8	15.8	13.1	9.3
7	8.2	22.0	10.8	19.6	11.5	13.6	13.1	21.8	12.9	11.5
8	9.0	11.5	11.5	23.6	13.0	11.2	13.8	18.2	14.5	9.0
9	8.1	6.8	11.5	23.9	10.5	2.4	13.7	15.1	14.1	6.5
10	9.1	10.4	13.0	20.2	12.1	7.6	14.3	15.7	14.2	8.7
11	9.1	7.1	12.5	18.0	11.9	4.9	13.2	12.8	13.6	5.2
<b>Average</b>	<b>7.0</b>	<b>10.6</b>	<b>10.5</b>	<b>19.1</b>	<b>11.5</b>	<b>8.0</b>	<b>12.6</b>	<b>14.1</b>	<b>12.7</b>	<b>7.6</b>

### 3.2 Fish Sample Composition

A total of 3150 fish were captured during beach seine sampling conducted in Nootka Sound, BC in 2021 (Table 3). A summary of the total number of fish captured and collected as specimens at each site over the collection period is presented in Table 4, with a complete dataset provided in Appendix II. Of the 3150 fish captured, 559 individual chum salmon, 11 coho salmon, 97 chinook salmon and 8 threespine stickleback were retained for lab analysis (Table 3). No sockeye, pink or Atlantic salmon were captured during sampling completed in Nootka Sound in 2021.

Chum salmon (*O. keta*) smolts were captured in significantly greater numbers than any other species. A total of 559 chum salmon were captured, representing 96.3 % of all captured fish.

Table 3: The total of collected individuals of each fish species captured in Nootka Sound, BC between March 30 and May 28, 2021, and the percentage of the total capture population that they represent.

Common Name	Capture Total (% of total capture population)	Collection Totals	Collection %
chum salmon	3034 (96.3 %)	559	18.4 %
coho salmon	11 (0.3 %)	11	100.0 %
chinook salmon	97 (3.1 %)	97	100.0 %
stickleback	8 (0.3 %)	8	100.0 %
<b>all species</b>	<b>3150</b>	<b>675</b>	<b>21.4 %</b>



Table 4: The number of captured fish (Capture Total) and the number of individual fish collected (Sample Total) from each of the 11 sample sites in Nootka Sound, BC between March 30 and May 28, 2021.

SITE	Chum		Coho		Sockeye		Chinook		Threespine Stickleback		Capture Totals	Sample Totals
	Capture Total	Sample Total	Capture Total	Sample Total	Capture Total	Sample Total	Capture Total	Sample Total	Capture Total	Sample Total		
1	848	103	3	3	0	0	59	59	0	0	910	165
2	20	20	5	5	0	0	3	3	1	1	29	29
3	208	71	0	0	0	0	0	0	0	0	208	71
4	1036	94	0	0	0	0	17	17	0	0	1053	111
5	609	68	3	3	0	0	7	7	0	0	619	78
6	3	3	0	0	0	0	0	0	0	0	3	3
7	96	59	0	0	0	0	0	0	0	0	96	59
8	125	64	0	0	0	0	1	1	0	0	126	65
9	41	41	0	0	0	0	4	4	4	4	49	49
10	0	0	0	0	0	0	0	0	3	3	3	3
11	48	36	0	0	0	0	6	6	0	0	54	42
<b>Total</b>	<b>3034</b>	<b>559</b>	<b>11</b>	<b>11</b>	<b>97</b>	<b>0</b>	<b>0</b>	<b>97</b>	<b>8</b>	<b>8</b>	<b>3150</b>	<b>675</b>

### 3.3 Fish Sample Size Statistics

Summary statistics for weight and fork length were calculated for the sample population of juvenile salmonids and threespine stickleback. Length (Table 5) and weight (Table 6) data were summarized by sampling event for each species.

#### 3.3.1 Chum Salmon

Individual weight of the 559 chum smolts collected during the five sample events ranged from 0.1 g to 3.6 g and averaged 0.8 g (SD = 0.4). Fork length of the chum smolts ranged from 33 mm to 73 mm and averaged 41 mm (SD = 5).

#### 3.3.2 Coho Salmon

Individual weight of the 11 coho smolts collected during four of the five sample events ranged from 0.5 g to 11.6 g and averaged 6.7g (SD = 2.9). The fork length of the coho smolts ranged from 34 mm to 97 mm and averaged 77 mm (SD = 16)

#### 3.3.3 Chinook Salmon

Individual weight of the 97 chinook smolts collected during the five sample events ranged from 0.5 g to 5.3 g and averaged 1.3 g (SD = 1.0). The fork length of the chinook smolts ranged from 33 mm to 74 mm and averaged 45 mm (SD = 9).

#### 3.3.4 Threespine Stickleback

Individual weight of the eight threespine stickleback collected during three of the five sample events ranged from 3.0 g to 4.2 g and averaged 3.6 g (SD = 0.5). The fork length of the threespine stickleback ranged from 60 mm to 68 mm and averaged 64 mm (SD = 3).

Table 5: Average lengths of chum, coho, chinook and threespine stickleback collected in Nootka Sound in 2021, summarized by sampling event.

Species	Length (mm)				
	March 30	April 13	April 27	May 11	May 28
chum	40 (n=209)	43 (n=159)	40 (n=162)	48 (n=22)	64 (n=7)
coho	- (n=0)	69 (n=1)	55 (n=2)	84 (n=6)	79 (n=2)
chinook	42 (n=18)	43 (n=23)	40 (n=37)	57 (n=8)	61 (n=11)
stickleback	- (n=0)	63 (n=4)	65 (n=1)	66 (n=3)	- (n=0)

Table 6: Average weights of chum, coho, chinook and threespine stickleback collected in Nootka Sound in 2021, summarized by sampling event.

Species	Weight (g)				
	March 30	April 13	April 27	May 11	May 28
chum	0.6 (n=209)	0.8 (n=159)	0.8 (n=162)	1.4 (n=22)	2.8 (n=7)
coho	- (n=0)	4.1 (n=1)	3.3 (n=2)	8.2 (n=6)	6.9 (n=2)
chinook	0.8 (n=18)	0.9 (n=23)	0.9 (n=37)	3.0 (n=8)	3.1 (n=11)
stickleback	- (n=0)	3.2 (n=4)	4.0 (n=1)	3.9 (n=3)	- (n=0)

### 3.4 Sea Lice Infestation Rates

The results of laboratory analysis for the presence of sea lice on the fish sample population collected in Nootka Sound, BC in 2021 are presented in Table 7. A complete dataset is included in Appendix III. A total of 675 samples were collected at the 11 sites in Nootka Sound and inspected for sea lice infestation. A total of six fish in the sample population were found to be infested with 8 sea lice (Table 7).

The sea lice prevalence in the sample population collected in Nootka Sound, BC in 2021 was 0.9 % and the abundance was 0.01 (Table 7).

The average intensity was calculated by dividing the total number of sea lice by the number of infested fish, giving a result of 1.3 for the sample population collected in Nootka Sound in 2021 (Table 7).

Table 7: Results of analysis for sea lice infestation on fish collected by beach seine in Nootka Sound, BC in 2021.

Species	Sample size (n)	Total number of lice observed	Total number of fish infested	Prevalence (%)	Abundance	Average Intensity
chum	559	8	6	1.1	0.01	1.3
coho	11	0	0	0.0	0.00	0.0
chinook	97	0	0	0.0	0.00	0.0
stickleback	8	0	0	0.0	0.00	0.0
<b>Total</b>	<b>675</b>	<b>8</b>	<b>6</b>	<b>0.9</b>	<b>0.01</b>	<b>1.3</b>

#### 3.4.1 Infestation Rates on Chum Salmon

The results of the laboratory analysis for sea lice infestation for chum salmon are presented by site in Table 8. A total of six chum salmon were found to be infested with eight sea lice. The largest number of chum salmon infested with sea lice (three chum) and the largest number of total lice (three lice) found on samples were at Site 5 (Table 8). Sea lice were only found on fish at sites 4, 5 and 7, and no chum salmon were collected at site 10 (Table 8).

A total of six chum salmon were found to be infested with at least one sea louse. The prevalence of sea lice on the chum salmon sample population (n=559) collected in Nootka Sound in 2021 was 1.1 %. Sea lice prevalence calculated by site for chum salmon and is presented in Table 8. The highest sea lice prevalence (4.4 %) was at Site 5.

A total of eight sea lice were identified during laboratory analysis of retained chum salmon. The abundance of sea lice on the chum salmon sample population (n=559) collected in Nootka Sound, BC in 2021 was 0.01. The eight sea lice identified were observed on six individual chum salmon resulting in an average intensity of 1.3. Sea lice abundance and intensity were calculated by site and are presented in Table 8. The highest sea lice abundance (0.06) was at Site 5 and the highest intensity (1.5) was at Site 7.

Table 8: Total number, prevalence, abundance, and intensity of sea lice infestation on chum salmon collected in Nootka Sound, BC in 2021 summarized by sampling site.

Site	# of Chum Analyzed	# of Infested Chum	Average Weight of Infested Chum (g)	# of Lice	Prevalence (%)	Abundance	Average Intensity
1	103	0	-	0	-	-	-
2	20	0	-	0	-	-	-
3	71	0	-	0	-	-	-
4	94	1	0.6	1	1.1	0.01	1.0
5	68	3	0.7	4	4.4	0.06	1.3
6	3	0	-	0	-	-	-
7	59	2	0.7	3	3.4	0.05	1.5
8	64	0	-	0	-	-	-
9	41	0	-	0	-	-	-
10	0	0	-	0	-	-	-
11	36	0	-	0	-	-	-
<b>TOTAL</b>	<b>559</b>	<b>6</b>	<b>0.7</b>	<b>8</b>	<b>1.1</b>	<b>0.01</b>	<b>1.3</b>

### 3.4.2 Infestation Rates on Coho Salmon

The results of the laboratory analysis for sea lice infestation for coho salmon are presented by site in Table 9. A total of 11 coho salmon were collected, none of which were infested with sea lice. Coho salmon were only collected at Sites 1, 2 and 5 (Table 9).

The prevalence of sea lice on the coho salmon sample population (n=11) collected in Nootka Sound in 2021 was 0.0 %. The abundance and intensity of sea lice on the coho salmon sample population (n=11) collected in Nootka Sound, BC in 2021 were both 0.0.

Table 9: Total number, prevalence, abundance, and intensity of sea lice infestation on coho salmon collected in Nootka Sound, BC in 2021 summarized by sampling site.

Site	# of Coho Analyzed	# of Infested Coho	Average Weight of Infested Coho (g)	# of Lice	Prevalence (%)	Abundance	Average Intensity
1	3	0	-	0	-	-	-
2	5	0	-	0	-	-	-
3	0	0	-	0	-	-	-
4	0	0	-	0	-	-	-
5	3	0	-	0	-	-	-
6	0	0	-	0	-	-	-
7	0	0	-	0	-	-	-
8	0	0	-	0	-	-	-
9	0	0	-	0	-	-	-
10	0	0	-	0	-	-	-
11	0	0	-	0	-	-	-
<b>TOTAL</b>	<b>11</b>	<b>0</b>	<b>0</b>	<b>0</b>	<b>0.0</b>	<b>0.0</b>	<b>0.0</b>

### 3.4.3 Infestation Rates on Chinook Salmon

The results of the laboratory analysis for sea lice infestation for chinook salmon are presented by site in Table 10. A total of 97 chinook salmon were collected, none of which were infested with sea lice. No chinook salmon were captured at Sites 3, 6, 7 or 10.

The prevalence of sea lice on the chinook salmon sample population (n=97) collected in Nootka Sound in 2021 was 0.0 %. Sea lice prevalence calculated by site for chinook salmon is presented in Table 10. The abundance and intensity of sea lice on the chinook salmon sample population (n=97) collected in Nootka Sound, BC in 2021 were both 0.0. Sea lice abundance and intensity was calculated by site and is presented in Table 10.

Table 10: Total number, prevalence, abundance, and intensity of sea lice infestation on chinook salmon collected in Nootka Sound, BC in 2021 summarized by sampling site.

Site	# of Chinook Analyzed	# of Infested Chinook	Average Weight of Infested Chinook (g)	# of Lice	Prevalence (%)	Abundance	Average Intensity
1	59	0	-	0	-	-	-
2	3	0	-	0	-	-	-
3	0	0	-	0	-	-	-
4	17	0	-	0	-	-	-
5	7	0	-	0	-	-	-
6	0	0	-	0	-	-	-
7	0	0	-	0	-	-	-
8	1	0	-	0	-	-	-
9	4	0	-	0	-	-	-
10	0	0	-	0	-	-	-
11	6	0	-	0	-	-	-
<b>TOTAL</b>	<b>97</b>	<b>0</b>	<b>0</b>	<b>0</b>	<b>0.0</b>	<b>0.0</b>	<b>0.0</b>

### 3.5 Infestation by Sea Lice Species

A total of eight *Lepeophtheirus salmonis* sea lice of two life stages were identified on six juvenile chum salmon and no *Caligus clemensi* were identified (Appendix III).

#### 3.5.1 Infestation by Life Stage on Chum Salmon

An analysis of the species of sea lice identified on the six infested chum salmon is presented in Table 11. A total of eight *Lepeophtheirus salmonis* sea lice of various life stages were identified on six juvenile chum salmon (Appendix III). The sea lice species and life stages identified on chum salmon are also presented by site in Table 12.

Table 11: The number of *Lepeophtheirus salmonis* and *Caligus clemensi* in each life stage identified on the chum salmon sample population from Nootka Sound BC, in 2021. LEP = *Lepeophtheirus salmonis* CAL= *Caligus clemensi*

Life Stage <sup>1</sup>	March 30	April 13	April 27	May 11	May 28
LEP Co	0	0	1	0	0
LEP C1	0	7	0	0	0
LEP C2	0	0	0	0	0
LEP PAM	0	0	0	0	0
LEP PAF	0	0	0	0	0
LEP AM	0	0	0	0	0
LEP AF	0	0	0	0	0
<b>TOTAL LEP</b>	<b>0</b>	<b>7</b>	<b>1</b>	<b>0</b>	<b>0</b>
CAL Co	0	0	0	0	0
CAL C1	0	0	0	0	0
CAL C2	0	0	0	0	0
CAL C3	0	0	0	0	0
CAL C4	0	0	0	0	0
CAL PAM	0	0	0	0	0
CAL PAF	0	0	0	0	0
CAL AM	0	0	0	0	0
CAL AF	0	0	0	0	0
<b>TOTAL CAL</b>	<b>0</b>	<b>0</b>	<b>0</b>	<b>0</b>	<b>0</b>

<sup>1</sup> Lice life stage codes: Co = copepodid, C1-4 = chalimus 1-4, PAM = pre-adult male, PAF = pre-adult female, AM = adult male, AF = adult female.

Table 12: The number of sea lice found on chum salmon collected in Nootka Sound, BC in 2021 summarized by sampling site. LEP = *Lepeophtheirus salmonis* CAL= *Caligus clemensi*

Site	Sample Week																				TOTAL		
	March 30				April 13				April 27				May 11				May 28						
	# of Chum Analyzed	# of Infested Chum	# of LEP	# of CAL	# of Chum Analyzed	# of Infested Chum	# of LEP	# of CAL	# of Chum Analyzed	# of Infested Chum	# of LEP	# of CAL	# of Chum Analyzed	# of Infested Chum	# of LEP	# of CAL	# of Chum Analyzed	# of Infested Chum	# of LEP	# of CAL	# of Chum Analyzed	# of Infested Chum	# of Lice
1	30	0	-	-	30	0	-	-	30	0	-	-	7	0	-	-	6	0	-	-	103	0	0
2	19	0	-	-	1	0	-	-	0	0	-	-	0	0	-	-	0	0	-	-	20	0	0
3	30	0	-	-	30	0	-	-	11	0	-	-	0	0	-	-	0	0	-	-	71	0	0
4	30	0	-	-	30	0	-	-	30	1	1	-	4	0	-	-	0	0	-	-	94	1	1
5	7	0	-	-	30	3	4	-	30	0	-	-	1	0	-	-	0	0	-	-	68	3	4
6	1	0	-	-	2	0	-	-	0	0	-	-	0	0	-	-	0	0	-	-	3	0	0
7	30	0	-	-	0	0	-	-	24	2	3	-	5	0	-	-	0	0	-	-	59	2	3
8	7	0	-	-	30	0	-	-	22	0	-	-	5	0	-	-	0	0	-	-	64	0	0
9	25	0	-	-	1	0	-	-	15	0	-	-	0	0	-	-	0	0	-	-	41	0	0
10	0	0	-	-	0	0	-	-	0	0	-	-	0	0	-	-	0	0	-	-	0	0	0
11	30	0	-	-	6	0	-	-	0	0	-	-	0	0	-	-	0	0	-	-	36	0	0
TOTAL	209	0	0	0	160	3	4	0	162	3	4	0	22	0	0	0	6	0	0	0	559	6	8



## 4.0 Conclusions

This report presents the data from the eighteenth year of beach seining and sea lice analysis conducted for wild juvenile salmonid monitoring in Nootka Sound, BC by Grieg Seafood. This report is limited to the summary and presentation of the 2021 collected data. Historic sea lice data for infestation rates on chum salmon from 2004 to 2021 is included in Appendix IV.

A total of 675 fish samples underwent lab analysis for sea lice infestation in 2021 including 559 chum, 11 coho, and 97 chinook salmon and eight threespine stickleback. A total of eight individuals were found to be infested with sea lice in the total sample population, resulting in a calculated sea lice prevalence of 0.9 % in 2021. A total of eight sea lice were found during laboratory analysis resulting in an abundance of 0.01 and an average intensity of 1.3 for the sample population.

Chum salmon smolts were captured in significantly greater numbers than any other species. A total of 3034 chum salmon were captured, representing 96.3 % of all captured salmonids. Of the 3034 chum captured, 559 were retained for lab analysis for sea lice infestation. A total of six chum smolts were found to be infested with a total of eight *Lepeophtheirus salmonis* lice resulting in a calculated prevalence of 1.1 %, abundance of 0.01 and an average intensity of 1.3 for the chum salmon sample population.

Lab analysis of the 11 coho salmon samples collected in Nootka Sound in 2021 did not identify any coho salmon infested with *Lepeophtheirus salmonis* or *Caligus clemensi* sea lice. The prevalence of sea lice on the coho salmon sample population collected in Nootka Sound in 2021 was 0.0 %, the abundance was 0.0 and the average intensity was 0.0.

Lab analysis of the 97 chinook salmon samples collected in Nootka Sound in 2021 did not identify any individuals infested with *Lepeophtheirus salmonis* or *Caligus clemensi* sea lice. The prevalence of sea lice on the chinook salmon sample population collected in Nootka Sound in 2021 was 0.0 %, the abundance was 0.0 and the average intensity was 0.0.

## 5.0 References

- Hamre L.A., C Eichner, C.M.A. Caipang, S.T. Dalvin, J.E. Bron, F. Nilsen, G. Boxshall and R. Skern-Mauitzen. 2013. The Salmon Louse *Lepeophtheirus salmonis* (Copepoda: Caligidae) Life Cycle Has Only Two Chalimus Stages. PLoS ONE 8(9): e73539.
- Healey M.C. 1991. Life history of chinook salmon (*Oncorhynchus tshawytscha*). In: Pacific Salmon Life Histories. C Groot, L Margolis (eds). UBC Press, Vancouver. Pp 313-393.
- Jones S. and S. Johnson. 2015. Sea lice monitoring and non-chemical measures A: Biology of sea lice, *Lepeophtheirus salmonis* and *Caligus spp.*, in western and eastern Canada. DFO Canadian Science Advisory Secretariat. Research Document 2014/019 Pacific Region. Pacific Biological Station, Fisheries and Oceans Canada.
- Jones S. and A. Nemec. 2004. Pink Salmon Action Plan Research. Part II: Sea Lice on Juvenile Salmon and on Three-spine Sticklebacks in 2003. PSARC Working Paper H2004-01.
- Johnson S.C. and L.J. Albright. 1991a. The developmental stages of *Lepeophtheirus salmonis* (Kroyer, 1837) (Copepoda: Caligidae). Canadian Journal of Zoology 69: 929-950.
- Johnson S.C. and L.J. Albright. 1991b. Development, growth and survival of *Lepeophtheirus salmonis* (Copepoda: Caligidae) under laboratory conditions. Journal of the Marine Biological Association of the UK 71: 425-436.
- Kabata Z. 1972. Developmental stages of *Caligus clemensi* (Copepoda: Caligidae) from fishes of British Columbia. Journal of the Fisheries Research Board of Canada 29: 1571-1593.
- Kabata Z. 1974. The species of *Lepeophtheirus* (Copepoda: Caligidae), from fishes of British Columbia. Journal of the Fisheries Research Board of Canada 30: 729-759.
- Margolis L., J.R. Arthur. 1979. Synopsis of the parasites of fishes of Canada. Bulletin of the Fisheries Research Board of Canada, Number 199. Ottawa. 269 pages.
- Mainstream Biological Consulting Inc. 2017. Nootka Sound Sea Lice 2017. An unpublished report prepared for Grieg Seafood BC.
- McDonald T.E., and L. Margolis. 1995. Synopsis of the parasites of fishes of Canada (1978-1993). Canadian Special Publication of Fisheries and Aquatic Sciences No. 122. National Research Council of Canada, Ottawa. 265 pages.
- Pacific Aquaculture Regulations. Finfish Aquaculture Licence conditions under the Pacific Aquaculture Regulations. Section 7. Sea Lice Monitoring
- Parker R.R. and L. Margolis. 1964. A new species of parasitic copepod, *Caligus clemensi* sp. nov. (Clogoida: Caligidae), from pelagic fishes in the coastal waters of British Columbia. Journal of Fisheries Research Board of Canada 21: 873-889.
- Pollard W.R., G.F. Hartman, C. Groot, and P. Edgell. 1997. Field Identification of Coastal Juvenile Salmonids. Published by Harbour Publishing for the Federal

Department of Fisheries and Oceans and MacMillan Bloedel Ltd. Madeira Park, BC Canada.

- Saksida, S., Constantine J., Karreman G.A. and Donald A. 2007a. Evaluation of sea lice abundance levels on farmed Atlantic salmon (*Salmo salar* L) located in the Broughton Archipelago of British Columbia from 2003 to 2005. *Aquacult. Res.* 38: 219-231.
- Saksida, S., Karreman G.A., Constantine J., and Donald A. 2007b. Differences in *Lepeophtheirus salmonis* abundance levels on Atlantic salmon farms in the Broughton Archipelago, British Columbia, Canada. *J. Fish Dis.* 30:357-366.
- Salo E.O. 1991. Life history of chum salmon (*Oncorhynchus keta*). In: Pacific Salmon Life Histories. C Grott, L Margolis (eds). UBC Press, Vancouver. Pp 233-309.
- Sandercock F.K. 1991. Life history of coho salmon (*Oncorhynchus kisutch*). In: Pacific Salmon Life Histories. C. Grott, L. Margolis (eds). UBC Press, Vancouver. Pp 397-445.
- Tully O. 1992. Predicting infestation parameters and impacts of caligid copepods in wild and captured fish populations. *Invert. Reprod. Develop.* 22: 91-102.

## Appendix I – Field Data

Date	Time	Site Number	Site Name	Salinity (ppt)	Temperature (°C)
				0.2m	0.2m
30-03-21	7:40	Site 1	McCurdy Creek	6.4	6.6
30-03-21	8:14	Site 2	North Muchalat	5.0	5.3
30-03-21	8:48	Site 3	Gore Island	11.9	6.6
30-03-21	9:07	Site 4	Williamson	9.1	5.7
30-03-21	9:48	Site 5	Hanna Channel	13.6	7.4
30-03-21	10:24	Site 6	Concepcion Point	12.3	7.2
30-03-21	10:44	Site 7	Zuciarie Channel	22.0	8.2
30-03-21	11:24	Site 8	East Mooyah	11.5	9.0
30-03-21	11:50	Site 9	Silverado Creek	6.8	8.1
30-03-21	12:15	Site 10	Ous Point	10.4	9.1
30-03-21	12:36	Site 11	Houston River	7.1	9.1
13-04-21	7:51	Site 1	McCurdy Creek	9.8	8.2
13-04-21	8:45	Site 2	North Muchalat	10.0	7.8
13-04-21	9:12	Site 3	Gore Island	25.4	10.0
13-04-21	9:39	Site 4	Williamson	15.3	9.5
13-04-21	10:10	Site 5	Hanna Channel	23.4	9.2
13-04-21	10:51	Site 6	Concepcion Point	20.6	11.2
13-04-21	11:25	Site 7	Zuciarie Channel	19.6	10.8
13-04-21	12:02	Site 8	East Mooyah	23.6	11.5
13-04-21	12:26	Site 9	Silverado Creek	23.9	11.5
13-04-21	12:49	Site 10	Ous Point	20.2	13.0
13-04-21	13:10	Site 11	Houston River	18.0	12.5
27-04-21	7:40	Site 1	McCurdy Creek	2.4	10.5
27-04-21	8:33	Site 2	North Muchalat	2.5	9.0
27-04-21	9:00	Site 3	Gore Island	10.7	11.8
27-04-21	9:19	Site 4	Williamson	7.5	11.6
27-04-21	9:52	Site 5	Hanna Channel	13.4	12.4
27-04-21	10:23	Site 6	Concepcion Point	11.5	12.3
27-04-21	11:07	Site 7	Zuciarie Channel	13.6	11.5
27-04-21	11:38	Site 8	East Mooyah	11.2	13.0
27-04-21	12:15	Site 9	Silverado Creek	2.4	10.5
27-04-21	12:25	Site 10	Ous Point	7.6	12.1
27-04-21	12:48	Site 11	Houston River	4.9	11.9
11-05-21	7:40	Site 1	McCurdy Creek	5.8	10.9
11-05-21	8:09	Site 2	North Muchalat	4.4	9.0
11-05-21	8:35	Site 3	Gore Island	15.9	12.3
11-05-21	8:48	Site 4	Williamson	12.9	12.0
11-05-21	9:12	Site 5	Hanna Channel	16.4	13.4
11-05-21	9:35	Site 6	Concepcion Point	15.8	12.8
11-05-21	9:56	Site 7	Zuciarie Channel	21.8	13.1

Date	Time	Site Number	Site Name	Salinity (ppt)	Temperature (°C)
				0.2m	0.2m
11-05-21	10:32	Site 8	East Mooyah	18.2	13.8
11-05-21	10:53	Site 9	Silverado Creek	15.1	13.7
11-05-21	11:08	Site 10	Ous Point	15.7	14.3
11-05-21	11:26	Site 11	Houston River	12.8	13.2
28-05-21	7:50	Site 1	McCurdy Creek	3.5	11.1
28-05-21	8:27	Site 2	North Muchalat	3.7	10.8
28-05-21	8:56	Site 3	Gore Island	5.3	11.0
28-05-21	9:10	Site 4	Williamson	8.3	12.4
28-05-21	9:33	Site 5	Hanna Channel	12.3	12.5
28-05-21	9:52	Site 6	Concepcion Point	9.3	13.1
28-05-21	10:14	Site 7	Zuciarde Channel	11.5	12.9
28-05-21	10:38	Site 8	East Mooyah	9.0	14.5
28-05-21	11:01	Site 9	Silverado Creek	6.5	14.1
28-05-21	11:17	Site 10	Ous Point	8.7	14.2
28-05-21	11:37	Site 11	Houston River	5.2	13.6

Appendix II – Capture and Collection Sample Totals

Date	Site Name	Tide Stage	Pink Captured	Pink Retained	Chum Captured	Chum Retained	Coho Captured	Coho Retained	Chinook Captured	Chinook Retained	Sockeye Captured	Sockeye Retained	TSB Captured	TSB Retained	Salmonid Mortalities	Weather Comments	Comments
30-Mar-21	Site 1	Low	0	0	323	30	0	0	1	1	0	0	0	0	0	Sun, Calm	1 Sea Cucumber, 2 Sculpins
30-Mar-21	Site 2	Low	0	0	19	19	0	0	3	3	0	0	0	0	0	Sun, Calm	12 Sculpins
30-Mar-21	Site 3	Low	0	0	81	30	0	0	0	0	0	0	0	0	0	Sun, Calm	Coast Guard Barge
30-Mar-21	Site 4	Low	0	0	850	30	0	0	4	4	0	0	0	0	0	Sun, Calm	1 herring, 1 juv rockfish, 17 sculpins, 8 flounder
30-Mar-21	Site 5	Low	0	0	7	7	0	0	2	2	0	0	0	0	0	Sun, Calm	Moved set to next beach due to spill booms. 5 sculpins, 20 flounder, 20 pipefish, 1 goby. Mergansers on site.
30-Mar-21	Site 6	Low	0	0	1	1	0	0	0	0	0	0	0	0	0	Sun, Calm	10 flounder, 4 sculpins
30-Mar-21	Site 7	Low	0	0	67	30	0	0	0	0	0	0	0	0	0	Sun, Calm	1 tubesnout, 2 pipefish, 1 pile perch
30-Mar-21	Site 8	Low	0	0	7	7	0	0	0	0	0	0	0	0	0	Sun, Calm	1 Great Sculpin
30-Mar-21	Site 9	Mid	0	0	25	25	0	0	3	3	0	0	0	0	0	Sun, Calm	2 flounder
30-Mar-21	Site 10	Mid	0	0	0	0	0	0	0	0	0	0	0	0	0	Sun, Calm	NFC
30-Mar-21	Site 11	Mid	0	0	42	30	0	0	5	5	0	0	0	0	0	Sun, Calm	No bycatch
13-Apr-21	Site 1	Low	0	0	381	30	1	1	19	19	0	0	0	0	2	Sun, Calm	2 Green crab, 1 sculpin, 1 juv lingcod
13-Apr-21	Site 2	Low	0	0	0	0	0	0	0	0	0	0	0	0	0	Small Waves, Sun	~10 sculpins
13-Apr-21	Site 3	Low	0	0	116	30	0	0	0	0	0	0	0	0	0	Sun, Calm	no bycatch
13-Apr-21	Site 4	Low	0	0	84	30	0	0	0	0	0	0	0	0	0	Sun, Calm	7 sculpins, ~ juv flounder, 1 goby. Mergansers on site
13-Apr-21	Site 5	Low	0	0	545	30	0	0	4	4	0	0	0	0	0	Sun, Calm	3 flounder, 3 sculpin, 1 pipefish, 1 leather star
13-Apr-21	Site 6	Mid	0	0	2	2	0	0	0	0	0	0	0	0	0	Sun, Calm	16 pipefish, 15 flounder, 1 juv rockfish, 2 gunnels, 1 juv lingcod
13-Apr-21	Site 7	Mid	0	0	0	0	0	0	0	0	0	0	0	0	0	Sun, Calm	1 shiner perch. Lots of hang ups
13-Apr-21	Site 8	Mid	0	0	91	30	0	0	0	0	0	0	0	0	2	Sun, Calm	No bycatch
13-Apr-21	Site 9	Mid	0	0	1	1	0	0	0	0	0	0	4	4	0	Sun, Calm	3 pipefish, 3sculpins
13-Apr-21	Site 10	High	0	0	0	0	0	0	0	0	0	0	0	0	0	Sun, Calm	6 sculpins, 1 gunnel
13-Apr-21	Site 11	High	0	0	6	6	0	0	0	0	0	0	0	0	0	Sun, Calm	6 sculpins
27-Apr-21	Site 1	Low	0	0	131	30	1	1	28	28	0	0	0	0	0	Overcast, Calm	3 green crabs, 1 goby, 1 pipefish, 2 sculpins, 2 flounders
27-Apr-21	Site 2	Low	0	0	0	0	0	0	0	0	0	0	1	1	0	Overcast, Calm	3 greencrab, 9 sculpins, 1 flounder
27-Apr-21	Site 3	Low	0	0	11	11	0	0	0	0	0	0	0	0	0	Overcast, Calm	Lots of Jellies
27-Apr-21	Site 4	Low	0	0	98	30	0	0	6	6	0	0	0	0	0	Overcast, Calm	3 green crab, many sandlances, 1 gunnel, 20 sanddabs, 10 sculpins
27-Apr-21	Site 5	Low	0	0	56	30	1	1	1	1	0	0	0	0	3	Overcast, Calm	1 green crab, ~50 pile perch, 10 striped perch, 15 shiner perch, 20 flounders, 2 gobies, 2 gunnels, 10 pipefish
27-Apr-21	Site 6	Mid	0	0	0	0	0	0	0	0	0	0	0	0	0	Overcast, Calm	5 shiner perch, 4 pipefish, 20 flounder, 3 gunnels, 1 goby
27-Apr-21	Site 7	Mid	0	0	24	24	0	0	0	0	0	0	0	0	0	Overcast, Calm	no bycatch. Lots of flippers @ mouth of bay
27-Apr-21	Site 8	Mid	0	0	22	22	0	0	1	1	0	0	0	0	0	Overcast, Calm	no bycatch
27-Apr-21	Site 9	Mid	0	0	15	15	0	0	1	1	0	0	0	0	0	Light Rain, Calm	no bycatch
27-Apr-21	Site 10	Mid	0	0	0	0	0	0	0	0	0	0	0	0	0	Overcast, Calm	1 kelp perch, 1 pipefish, 1 sculpin
27-Apr-21	Site 11	High	0	0	0	0	0	0	0	0	0	0	0	0	0	Overcast, Calm	NFC
11-May-21	Site 1	Low	0	0	7	7	0	0	1	1	0	0	0	0	0	Clear, Calm	4 green crabs, 4 goby, 2 pipefish, 6 sculpins.
11-May-21	Site 2	Low	0	0	0	0	4	4	0	0	0	0	0	0	0	Sun, Calm	1 green crab, 2 goby
11-May-21	Site 3	Low	0	0	0	0	0	0	0	0	0	0	0	0	0	High Overcast, Calm	8 Goby
11-May-21	Site 4	Low	0	0	4	4	0	0	7	7	0	0	0	0	0	Overcast, Calm	2 green crab, 3 sanddabs, 2 sculpins

Date	Site Name	Tide Stage	Pink Captured	Pink Retained	Chum Captured	Chum Retained	Coho Captured	Coho Retained	Chinook Captured	Chinook Retained	Sockeye Captured	Sockeye Retained	TSB Captured	TSB Retained	Salmonid Mortalities	Weather Comments	Comments
11-May-21	Site 5	Low	0	0	1	1	2	2	0	0	0	0	0	0	0	Overcast, Calm	1 Cutthroat, abundant bycatch of shiner perch, pile perch, kelp prech, gunnels, pipefish, juv lingcod, sculpins, sanddabs
11-May-21	Site 6	Mid	0	0	0	0	0	0	0	0	0	0	0	0	0	Overcast, Calm	Abundant bycatch of perch, sanddabs, greenling, pipefish, sculpins. 1 juv rockfish.
11-May-21	Site 7	Mid	0	0	5	5	0	0	0	0	0	0	0	0	0	Overcast, Calm	~250 pile perch, 1 cabezon, 1 pipefish, 5 striped perch, 15 shiner perch
11-May-21	Site 8	Mid	0	0	5	5	0	0	0	0	0	0	0	0	0	Overcast, Calm	~50 pile perch
11-May-21	Site 9	Mid	0	0	0	0	0	0	0	0	0	0	0	0	0	Overcast, Calm	6 pile perch, 2 sculpin, 1 pipefish
11-May-21	Site 10	Mid	0	0	0	0	0	0	0	0	0	0	3	3	0	Overcast, Calm	4 kelp perch, 3 shiner perch, 1 pile perch, 2 sculpins
11-May-21	Site 11	Mid	0	0	0	0	0	0	0	0	0	0	0	0	0	Overcast, Calm	1 sculpin, 1 striped perch.
28-May-21	Site 1	Low	0	0	6	6	1	1	10	10	0	0	0	0	0	Cloudy, Calm	1 green crab, 2 sculpins
28-May-21	Site 2	Low	0	0	1	1	1	1	0	0	0	0	0	0	0	Cloudy, Calm	20 shiner perch, 12 sculpins
28-May-21	Site 3	Low	0	0	0	0	0	0	0	0	0	0	0	0	0	Cloudy, Calm	16 gobies, 2 shiner perch, 2 pile perch, 1 stripped perch.
28-May-21	Site 4	Low	0	0	0	0	0	0	0	0	0	0	0	0	0	Cloudy, Calm	1 midshipman, 6 sanddabs, 1 snake prickleback
28-May-21	Site 5	Low	0	0	0	0	0	0	0	0	0	0	0	0	0	Sunny and cloud, Calm	5 dungeness crabs, plainfin midshipman, pile/kelp/shiner/sripped perch, pipefish, sanddabs
28-May-21	Site 6	Low	0	0	0	0	0	0	0	0	0	0	0	0	0	Sunny and cloud, Calm	Herring, pile/shiner/kelp perch, pipefish, sanddabs, plainfin midshipman, gobies, C-O Sole
28-May-21	Site 7	Low	0	0	0	0	0	0	0	0	0	0	0	0	0	Sunny and cloud, Calm	pile/shiner/kelp/stripped perch, greenling, pipefish
28-May-21	Site 8	Low	0	0	0	0	0	0	0	0	0	0	0	0	0	Sunny and cloud, Calm	6 herring, 80 shiner perch
28-May-21	Site 9	Low	0	0	0	0	0	0	0	0	0	0	0	0	0	Sunny and cloud, Calm	4 herring, 25 shiner perch, flatfish, sculpin
28-May-21	Site 10	Low	0	0	0	0	0	0	0	0	0	0	0	0	0	Sun and Cloud, Light Breeze	4 rockfish, 75 herring, 30 shiner perch, 1 anchovy
28-May-21	Site 11	Low	0	0	0	0	0	0	1	1	0	0	0	0	0	Sun and Cloud	2 rockfish, stripped/pile/shiner perch

Appendix III – Sea Lice Analysis

SITE	WEEK	DATE COLLECTED	DATE EXAMINED	FISH SPECIES	FISH NUMBER	LENGTH IN MM	WEIGHT IN G	LEP Co	LEP C1	LEP C2	LEP NM NOT ID	LEP PAM	LEP PAF	LEP AM	LEP AF	LEP MOT NOT ID	CAL Co	CAL C1	CAL C2	CAL C3	CAL C4	CAL NM NOT ID	CAL PAM	CAL PAF	CAL AM	CAL AF	CAL MOT NOT ID	TOT LICE ID
1	1	30-Mar-21	08-Jun-21	Chinook	453	37	0.7	0	0	0	0	0	0	0	0	0	0	0	0	0	0	0	0	0	0	0	0	
1	1	30-Mar-21	08-Jun-21	Chum	454	39	0.7	0	0	0	0	0	0	0	0	0	0	0	0	0	0	0	0	0	0	0	0	
1	1	30-Mar-21	08-Jun-21	Chum	455	42	0.9	0	0	0	0	0	0	0	0	0	0	0	0	0	0	0	0	0	0	0	0	
1	1	30-Mar-21	08-Jun-21	Chum	456	38	0.6	0	0	0	0	0	0	0	0	0	0	0	0	0	0	0	0	0	0	0	0	
1	1	30-Mar-21	08-Jun-21	Chum	457	42	0.8	0	0	0	0	0	0	0	0	0	0	0	0	0	0	0	0	0	0	0	0	
1	1	30-Mar-21	08-Jun-21	Chum	458	38	0.5	0	0	0	0	0	0	0	0	0	0	0	0	0	0	0	0	0	0	0	0	
1	1	30-Mar-21	08-Jun-21	Chum	459	43	0.8	0	0	0	0	0	0	0	0	0	0	0	0	0	0	0	0	0	0	0	0	
1	1	30-Mar-21	08-Jun-21	Chum	460	37	0.6	0	0	0	0	0	0	0	0	0	0	0	0	0	0	0	0	0	0	0	0	
1	1	30-Mar-21	08-Jun-21	Chum	461	37	0.6	0	0	0	0	0	0	0	0	0	0	0	0	0	0	0	0	0	0	0	0	
1	1	30-Mar-21	08-Jun-21	Chum	462	36	0.5	0	0	0	0	0	0	0	0	0	0	0	0	0	0	0	0	0	0	0	0	
1	1	30-Mar-21	08-Jun-21	Chum	463	39	0.7	0	0	0	0	0	0	0	0	0	0	0	0	0	0	0	0	0	0	0	0	
1	1	30-Mar-21	08-Jun-21	Chum	464	36	0.5	0	0	0	0	0	0	0	0	0	0	0	0	0	0	0	0	0	0	0	0	
1	1	30-Mar-21	08-Jun-21	Chum	465	37	0.6	0	0	0	0	0	0	0	0	0	0	0	0	0	0	0	0	0	0	0	0	
1	1	30-Mar-21	08-Jun-21	Chum	466	36	0.5	0	0	0	0	0	0	0	0	0	0	0	0	0	0	0	0	0	0	0	0	
1	1	30-Mar-21	08-Jun-21	Chum	467	34	0.5	0	0	0	0	0	0	0	0	0	0	0	0	0	0	0	0	0	0	0	0	
1	1	30-Mar-21	08-Jun-21	Chum	468	37	0.5	0	0	0	0	0	0	0	0	0	0	0	0	0	0	0	0	0	0	0	0	
1	1	30-Mar-21	08-Jun-21	Chum	469	36	0.5	0	0	0	0	0	0	0	0	0	0	0	0	0	0	0	0	0	0	0	0	
1	1	30-Mar-21	08-Jun-21	Chum	470	46	1.2	0	0	0	0	0	0	0	0	0	0	0	0	0	0	0	0	0	0	0	0	
1	1	30-Mar-21	08-Jun-21	Chum	471	43	0.9	0	0	0	0	0	0	0	0	0	0	0	0	0	0	0	0	0	0	0	0	
1	1	30-Mar-21	08-Jun-21	Chum	472	36	0.4	0	0	0	0	0	0	0	0	0	0	0	0	0	0	0	0	0	0	0	0	
1	1	30-Mar-21	08-Jun-21	Chum	473	38	0.7	0	0	0	0	0	0	0	0	0	0	0	0	0	0	0	0	0	0	0	0	
1	1	30-Mar-21	08-Jun-21	Chum	474	38	0.6	0	0	0	0	0	0	0	0	0	0	0	0	0	0	0	0	0	0	0	0	
1	1	30-Mar-21	08-Jun-21	Chum	475	33	0.4	0	0	0	0	0	0	0	0	0	0	0	0	0	0	0	0	0	0	0	0	
1	1	30-Mar-21	08-Jun-21	Chum	476	36	0.5	0	0	0	0	0	0	0	0	0	0	0	0	0	0	0	0	0	0	0	0	
1	1	30-Mar-21	08-Jun-21	Chum	477	40	0.8	0	0	0	0	0	0	0	0	0	0	0	0	0	0	0	0	0	0	0	0	
1	1	30-Mar-21	08-Jun-21	Chum	478	39	0.7	0	0	0	0	0	0	0	0	0	0	0	0	0	0	0	0	0	0	0	0	
1	1	30-Mar-21	08-Jun-21	Chum	479	39	0.7	0	0	0	0	0	0	0	0	0	0	0	0	0	0	0	0	0	0	0	0	
1	1	30-Mar-21	08-Jun-21	Chum	480	35	0.5	0	0	0	0	0	0	0	0	0	0	0	0	0	0	0	0	0	0	0	0	
1	1	30-Mar-21	08-Jun-21	Chum	481	40	0.7	0	0	0	0	0	0	0	0	0	0	0	0	0	0	0	0	0	0	0	0	
1	1	30-Mar-21	08-Jun-21	Chum	482	35	0.5	0	0	0	0	0	0	0	0	0	0	0	0	0	0	0	0	0	0	0	0	
1	1	30-Mar-21	08-Jun-21	Chum	483	36	0.5	0	0	0	0	0	0	0	0	0	0	0	0	0	0	0	0	0	0	0	0	
2	1	30-Mar-21	08-Jun-21	Chinook	428	43	1.1	0	0	0	0	0	0	0	0	0	0	0	0	0	0	0	0	0	0	0	0	
2	1	30-Mar-21	08-Jun-21	Chinook	429	40	0.9	0	0	0	0	0	0	0	0	0	0	0	0	0	0	0	0	0	0	0	0	
2	1	30-Mar-21	08-Jun-21	Chinook	430	41	0.9	0	0	0	0	0	0	0	0	0	0	0	0	0	0	0	0	0	0	0	0	
2	1	30-Mar-21	08-Jun-21	Chum	431	37	0.6	0	0	0	0	0	0	0	0	0	0	0	0	0	0	0	0	0	0	0	0	
2	1	30-Mar-21	08-Jun-21	Chum	432	38	0.6	0	0	0	0	0	0	0	0	0	0	0	0	0	0	0	0	0	0	0	0	
2	1	30-Mar-21	08-Jun-21	Chum	433	38	0.5	0	0	0	0	0	0	0	0	0	0	0	0	0	0	0	0	0	0	0	0	
2	1	30-Mar-21	08-Jun-21	Chum	434	38	0.6	0	0	0	0	0	0	0	0	0	0	0	0	0	0	0	0	0	0	0	0	
2	1	30-Mar-21	08-Jun-21	Chum	435	45	1.0	0	0	0	0	0	0	0	0	0	0	0	0	0	0	0	0	0	0	0	0	



SITE	WEEK	DATE COLLECTED	DATE EXAMINED	FISH SPECIES	FISH NUMBER	LENGTH IN MM	WEIGHT IN G	LEP Co	LEP C1	LEP C2	LEP NM NOT ID	LEP PAM	LEP PAF	LEP AM	LEP AF	LEP MOT NOT ID	CAL Co	CAL C1	CAL C2	CAL C3	CAL C4	CAL NM NOT ID	CAL PAM	CAL PAF	CAL AM	CAL AF	CAL MOT NOT ID	TOT LICE ID
2	1	30-Mar-21	08-Jun-21	Chum	436	39	0.7	0	0	0	0	0	0	0	0	0	0	0	0	0	0	0	0	0	0	0	0	
2	1	30-Mar-21	08-Jun-21	Chum	437	40	0.6	0	0	0	0	0	0	0	0	0	0	0	0	0	0	0	0	0	0	0	0	
2	1	30-Mar-21	08-Jun-21	Chum	438	43	0.8	0	0	0	0	0	0	0	0	0	0	0	0	0	0	0	0	0	0	0	0	
2	1	30-Mar-21	08-Jun-21	Chum	439	39	0.7	0	0	0	0	0	0	0	0	0	0	0	0	0	0	0	0	0	0	0	0	
2	1	30-Mar-21	08-Jun-21	Chum	440	35	0.5	0	0	0	0	0	0	0	0	0	0	0	0	0	0	0	0	0	0	0	0	
2	1	30-Mar-21	08-Jun-21	Chum	441	42	0.8	0	0	0	0	0	0	0	0	0	0	0	0	0	0	0	0	0	0	0	0	
2	1	30-Mar-21	08-Jun-21	Chum	442	36	0.4	0	0	0	0	0	0	0	0	0	0	0	0	0	0	0	0	0	0	0	0	
2	1	30-Mar-21	08-Jun-21	Chum	443	42	0.8	0	0	0	0	0	0	0	0	0	0	0	0	0	0	0	0	0	0	0	0	
2	1	30-Mar-21	08-Jun-21	Chum	444	43	0.8	0	0	0	0	0	0	0	0	0	0	0	0	0	0	0	0	0	0	0	0	
2	1	30-Mar-21	08-Jun-21	Chum	445	46	1.1	0	0	0	0	0	0	0	0	0	0	0	0	0	0	0	0	0	0	0	0	
2	1	30-Mar-21	08-Jun-21	Chum	446	36	0.6	0	0	0	0	0	0	0	0	0	0	0	0	0	0	0	0	0	0	0	0	
2	1	30-Mar-21	08-Jun-21	Chum	447	41	0.8	0	0	0	0	0	0	0	0	0	0	0	0	0	0	0	0	0	0	0	0	
2	1	30-Mar-21	08-Jun-21	Chum	448	40	0.7	0	0	0	0	0	0	0	0	0	0	0	0	0	0	0	0	0	0	0	0	
2	1	30-Mar-21	08-Jun-21	Chum	449	40	0.8	0	0	0	0	0	0	0	0	0	0	0	0	0	0	0	0	0	0	0	0	
3	1	30-Mar-21	09-Jun-21	Chum	623	44	0.9	0	0	0	0	0	0	0	0	0	0	0	0	0	0	0	0	0	0	0	0	
3	1	30-Mar-21	09-Jun-21	Chum	624	35	0.4	0	0	0	0	0	0	0	0	0	0	0	0	0	0	0	0	0	0	0	0	
3	1	30-Mar-21	09-Jun-21	Chum	625	43	0.9	0	0	0	0	0	0	0	0	0	0	0	0	0	0	0	0	0	0	0	0	
3	1	30-Mar-21	09-Jun-21	Chum	626	41	0.8	0	0	0	0	0	0	0	0	0	0	0	0	0	0	0	0	0	0	0	0	
3	1	30-Mar-21	09-Jun-21	Chum	627	34	0.4	0	0	0	0	0	0	0	0	0	0	0	0	0	0	0	0	0	0	0	0	
3	1	30-Mar-21	09-Jun-21	Chum	628	45	1.0	0	0	0	0	0	0	0	0	0	0	0	0	0	0	0	0	0	0	0	0	
3	1	30-Mar-21	09-Jun-21	Chum	629	42	0.8	0	0	0	0	0	0	0	0	0	0	0	0	0	0	0	0	0	0	0	0	
3	1	30-Mar-21	09-Jun-21	Chum	630	45	1.1	0	0	0	0	0	0	0	0	0	0	0	0	0	0	0	0	0	0	0	0	
3	1	30-Mar-21	09-Jun-21	Chum	631	45	0.9	0	0	0	0	0	0	0	0	0	0	0	0	0	0	0	0	0	0	0	0	
3	1	30-Mar-21	09-Jun-21	Chum	632	36	0.5	0	0	0	0	0	0	0	0	0	0	0	0	0	0	0	0	0	0	0	0	
3	1	30-Mar-21	09-Jun-21	Chum	633	41	0.9	0	0	0	0	0	0	0	0	0	0	0	0	0	0	0	0	0	0	0	0	
3	1	30-Mar-21	09-Jun-21	Chum	634	38	0.7	0	0	0	0	0	0	0	0	0	0	0	0	0	0	0	0	0	0	0	0	
3	1	30-Mar-21	09-Jun-21	Chum	635	35	0.4	0	0	0	0	0	0	0	0	0	0	0	0	0	0	0	0	0	0	0	0	
3	1	30-Mar-21	09-Jun-21	Chum	636	46	1.1	0	0	0	0	0	0	0	0	0	0	0	0	0	0	0	0	0	0	0	0	
3	1	30-Mar-21	09-Jun-21	Chum	637	33	0.5	0	0	0	0	0	0	0	0	0	0	0	0	0	0	0	0	0	0	0	0	
3	1	30-Mar-21	09-Jun-21	Chum	638	42	0.8	0	0	0	0	0	0	0	0	0	0	0	0	0	0	0	0	0	0	0	0	
3	1	30-Mar-21	09-Jun-21	Chum	639	46	1.0	0	0	0	0	0	0	0	0	0	0	0	0	0	0	0	0	0	0	0	0	
3	1	30-Mar-21	09-Jun-21	Chum	640	43	1.0	0	0	0	0	0	0	0	0	0	0	0	0	0	0	0	0	0	0	0	0	
3	1	30-Mar-21	09-Jun-21	Chum	641	47	1.3	0	0	0	0	0	0	0	0	0	0	0	0	0	0	0	0	0	0	0	0	
3	1	30-Mar-21	09-Jun-21	Chum	642	40	0.7	0	0	0	0	0	0	0	0	0	0	0	0	0	0	0	0	0	0	0	0	
3	1	30-Mar-21	09-Jun-21	Chum	643	37	0.6	0	0	0	0	0	0	0	0	0	0	0	0	0	0	0	0	0	0	0	0	
3	1	30-Mar-21	09-Jun-21	Chum	644	40	0.7	0	0	0	0	0	0	0	0	0	0	0	0	0	0	0	0	0	0	0	0	
3	1	30-Mar-21	09-Jun-21	Chum	645	38	0.6	0	0	0	0	0	0	0	0	0	0	0	0	0	0	0	0	0	0	0	0	
3	1	30-Mar-21	09-Jun-21	Chum	646	42	1.0	0	0	0	0	0	0	0	0	0	0	0	0	0	0	0	0	0	0	0	0	
3	1	30-Mar-21	09-Jun-21	Chum	647	42	0.8	0	0	0	0	0	0	0	0	0	0	0	0	0	0	0	0	0	0	0	0	
3	1	30-Mar-21	09-Jun-21	Chum	648	37	0.6	0	0	0	0	0	0	0	0	0	0	0	0	0	0	0	0	0	0	0	0	
3	1	30-Mar-21	09-Jun-21	Chum	649	34	0.4	0	0	0	0	0	0	0	0	0	0	0	0	0	0	0	0	0	0	0	0	
3	1	30-Mar-21	09-Jun-21	Chum	650	34	0.5	0	0	0	0	0	0	0	0	0	0	0	0	0	0	0	0	0	0	0	0	

SITE	WEEK	DATE COLLECTED	DATE EXAMINED	FISH SPECIES	FISH NUMBER	LENGTH IN MM	WEIGHT IN G	LEP Co	LEP C1	LEP C2	LEP NM NOT ID	LEP PAM	LEP PAF	LEP AM	LEP AF	LEP MOT NOT ID	CAL Co	CAL C1	CAL C2	CAL C3	CAL C4	CAL NM NOT ID	CAL PAM	CAL PAF	CAL AM	CAL AF	CAL MOT NOT ID	TOT LICE ID
3	1	30-Mar-21	09-Jun-21	Chum	651	35	0.4	0	0	0	0	0	0	0	0	0	0	0	0	0	0	0	0	0	0	0	0	
3	1	30-Mar-21	09-Jun-21	Chum	652	47	1.2	0	0	0	0	0	0	0	0	0	0	0	0	0	0	0	0	0	0	0	0	
4	1	30-Mar-21	09-Jun-21	Chum	589	45	0.8	0	0	0	0	0	0	0	0	0	0	0	0	0	0	0	0	0	0	0	0	
4	1	30-Mar-21	09-Jun-21	Chum	590	43	0.7	0	0	0	0	0	0	0	0	0	0	0	0	0	0	0	0	0	0	0	0	
4	1	30-Mar-21	09-Jun-21	Chum	591	38	0.5	0	0	0	0	0	0	0	0	0	0	0	0	0	0	0	0	0	0	0	0	
4	1	30-Mar-21	09-Jun-21	Chum	592	45	0.7	0	0	0	0	0	0	0	0	0	0	0	0	0	0	0	0	0	0	0	0	
4	1	30-Mar-21	09-Jun-21	Chum	593	35	0.4	0	0	0	0	0	0	0	0	0	0	0	0	0	0	0	0	0	0	0	0	
4	1	30-Mar-21	09-Jun-21	Chum	594	38	0.5	0	0	0	0	0	0	0	0	0	0	0	0	0	0	0	0	0	0	0	0	
4	1	30-Mar-21	09-Jun-21	Chum	595	45	0.9	0	0	0	0	0	0	0	0	0	0	0	0	0	0	0	0	0	0	0	0	
4	1	30-Mar-21	09-Jun-21	Chum	596	37	0.5	0	0	0	0	0	0	0	0	0	0	0	0	0	0	0	0	0	0	0	0	
4	1	30-Mar-21	09-Jun-21	Chum	597	40	0.5	0	0	0	0	0	0	0	0	0	0	0	0	0	0	0	0	0	0	0	0	
4	1	30-Mar-21	09-Jun-21	Chum	598	40	0.6	0	0	0	0	0	0	0	0	0	0	0	0	0	0	0	0	0	0	0	0	
4	1	30-Mar-21	09-Jun-21	Chum	599	38	0.5	0	0	0	0	0	0	0	0	0	0	0	0	0	0	0	0	0	0	0	0	
4	1	30-Mar-21	09-Jun-21	Chum	600	40	0.5	0	0	0	0	0	0	0	0	0	0	0	0	0	0	0	0	0	0	0	0	
4	1	30-Mar-21	09-Jun-21	Chum	601	39	0.5	0	0	0	0	0	0	0	0	0	0	0	0	0	0	0	0	0	0	0	0	
4	1	30-Mar-21	09-Jun-21	Chum	602	38	0.5	0	0	0	0	0	0	0	0	0	0	0	0	0	0	0	0	0	0	0	0	
4	1	30-Mar-21	09-Jun-21	Chum	603	39	0.4	0	0	0	0	0	0	0	0	0	0	0	0	0	0	0	0	0	0	0	0	
4	1	30-Mar-21	09-Jun-21	Chum	604	38	0.5	0	0	0	0	0	0	0	0	0	0	0	0	0	0	0	0	0	0	0	0	
4	1	30-Mar-21	09-Jun-21	Chum	605	43	0.6	0	0	0	0	0	0	0	0	0	0	0	0	0	0	0	0	0	0	0	0	
4	1	30-Mar-21	09-Jun-21	Chum	606	36	0.4	0	0	0	0	0	0	0	0	0	0	0	0	0	0	0	0	0	0	0	0	
4	1	30-Mar-21	09-Jun-21	Chum	607	44	0.8	0	0	0	0	0	0	0	0	0	0	0	0	0	0	0	0	0	0	0	0	
4	1	30-Mar-21	09-Jun-21	Chum	608	38	0.5	0	0	0	0	0	0	0	0	0	0	0	0	0	0	0	0	0	0	0	0	
4	1	30-Mar-21	09-Jun-21	Chum	609	37	0.4	0	0	0	0	0	0	0	0	0	0	0	0	0	0	0	0	0	0	0	0	
4	1	30-Mar-21	09-Jun-21	Chum	610	37	0.5	0	0	0	0	0	0	0	0	0	0	0	0	0	0	0	0	0	0	0	0	
4	1	30-Mar-21	09-Jun-21	Chum	611	40	0.5	0	0	0	0	0	0	0	0	0	0	0	0	0	0	0	0	0	0	0	0	
4	1	30-Mar-21	09-Jun-21	Chum	612	42	0.5	0	0	0	0	0	0	0	0	0	0	0	0	0	0	0	0	0	0	0	0	
4	1	30-Mar-21	09-Jun-21	Chum	613	36	0.4	0	0	0	0	0	0	0	0	0	0	0	0	0	0	0	0	0	0	0	0	
4	1	30-Mar-21	09-Jun-21	Chum	614	40	0.5	0	0	0	0	0	0	0	0	0	0	0	0	0	0	0	0	0	0	0	0	
4	1	30-Mar-21	09-Jun-21	Chum	615	44	0.8	0	0	0	0	0	0	0	0	0	0	0	0	0	0	0	0	0	0	0	0	
4	1	30-Mar-21	09-Jun-21	Chum	616	44	0.8	0	0	0	0	0	0	0	0	0	0	0	0	0	0	0	0	0	0	0	0	
4	1	30-Mar-21	09-Jun-21	Chum	617	36	0.4	0	0	0	0	0	0	0	0	0	0	0	0	0	0	0	0	0	0	0	0	
4	1	30-Mar-21	09-Jun-21	Chum	618	40	0.5	0	0	0	0	0	0	0	0	0	0	0	0	0	0	0	0	0	0	0	0	
4	1	30-Mar-21	09-Jun-21	Chinook	619	44	1.0	0	0	0	0	0	0	0	0	0	0	0	0	0	0	0	0	0	0	0	0	
4	1	30-Mar-21	09-Jun-21	Chinook	620	45	1.2	0	0	0	0	0	0	0	0	0	0	0	0	0	0	0	0	0	0	0	0	
4	1	30-Mar-21	09-Jun-21	Chinook	621	41	0.6	0	0	0	0	0	0	0	0	0	0	0	0	0	0	0	0	0	0	0	0	
4	1	30-Mar-21	09-Jun-21	Chinook	622	43	0.8	0	0	0	0	0	0	0	0	0	0	0	0	0	0	0	0	0	0	0	0	
6	1	30-Mar-21	22-Apr-21	Chum	68	35	0.3	0	0	0	0	0	0	0	0	0	0	0	0	0	0	0	0	0	0	0	0	
7	1	30-Mar-21	22-Apr-21	Chum	188	38	0.5	0	0	0	0	0	0	0	0	0	0	0	0	0	0	0	0	0	0	0	0	
7	1	30-Mar-21	22-Apr-21	Chum	189	39	0.4	0	0	0	0	0	0	0	0	0	0	0	0	0	0	0	0	0	0	0	0	
7	1	30-Mar-21	22-Apr-21	Chum	190	43	0.6	0	0	0	0	0	0	0	0	0	0	0	0	0	0	0	0	0	0	0	0	
7	1	30-Mar-21	22-Apr-21	Chum	191	41	0.6	0	0	0	0	0	0	0	0	0	0	0	0	0	0	0	0	0	0	0	0	
7	1	30-Mar-21	22-Apr-21	Chum	192	38	0.4	0	0	0	0	0	0	0	0	0	0	0	0	0	0	0	0	0	0	0	0	

SITE	WEEK	DATE COLLECTED	DATE EXAMINED	FISH SPECIES	FISH NUMBER	LENGTH IN MM	WEIGHT IN G	LEP Co	LEP C1	LEP C2	LEP NM NOT ID	LEP PAM	LEP PAF	LEP AM	LEP AF	LEP MOT NOT ID	CAL Co	CAL C1	CAL C2	CAL C3	CAL C4	CAL NM NOT ID	CAL PAM	CAL PAF	CAL AM	CAL AF	CAL MOT NOT ID	TOT LICE ID
7	1	30-Mar-21	22-Apr-21	Chum	193	40	0.5	0	0	0	0	0	0	0	0	0	0	0	0	0	0	0	0	0	0	0	0	
7	1	30-Mar-21	22-Apr-21	Chum	194	38	0.5	0	0	0	0	0	0	0	0	0	0	0	0	0	0	0	0	0	0	0	0	
7	1	30-Mar-21	22-Apr-21	Chinook	195	40	0.5	0	0	0	0	0	0	0	0	0	0	0	0	0	0	0	0	0	0	0	0	
7	1	30-Mar-21	22-Apr-21	Chinook	196	40	0.6	0	0	0	0	0	0	0	0	0	0	0	0	0	0	0	0	0	0	0	0	
7	1	30-Mar-21	09-Jun-21	Chum	559	39	0.7	0	0	0	0	0	0	0	0	0	0	0	0	0	0	0	0	0	0	0	0	
7	1	30-Mar-21	09-Jun-21	Chum	560	36	0.5	0	0	0	0	0	0	0	0	0	0	0	0	0	0	0	0	0	0	0	0	
7	1	30-Mar-21	09-Jun-21	Chum	561	38	0.6	0	0	0	0	0	0	0	0	0	0	0	0	0	0	0	0	0	0	0	0	
7	1	30-Mar-21	09-Jun-21	Chum	562	44	1.0	0	0	0	0	0	0	0	0	0	0	0	0	0	0	0	0	0	0	0	0	
7	1	30-Mar-21	09-Jun-21	Chum	563	36	0.5	0	0	0	0	0	0	0	0	0	0	0	0	0	0	0	0	0	0	0	0	
7	1	30-Mar-21	09-Jun-21	Chum	564	37	0.6	0	0	0	0	0	0	0	0	0	0	0	0	0	0	0	0	0	0	0	0	
7	1	30-Mar-21	09-Jun-21	Chum	565	36	0.5	0	0	0	0	0	0	0	0	0	0	0	0	0	0	0	0	0	0	0	0	
7	1	30-Mar-21	09-Jun-21	Chum	566	33	0.3	0	0	0	0	0	0	0	0	0	0	0	0	0	0	0	0	0	0	0	0	
7	1	30-Mar-21	09-Jun-21	Chum	567	34	0.4	0	0	0	0	0	0	0	0	0	0	0	0	0	0	0	0	0	0	0	0	
7	1	30-Mar-21	09-Jun-21	Chum	568	35	0.5	0	0	0	0	0	0	0	0	0	0	0	0	0	0	0	0	0	0	0	0	
7	1	30-Mar-21	09-Jun-21	Chum	569	39	0.7	0	0	0	0	0	0	0	0	0	0	0	0	0	0	0	0	0	0	0	0	
7	1	30-Mar-21	09-Jun-21	Chum	570	40	0.7	0	0	0	0	0	0	0	0	0	0	0	0	0	0	0	0	0	0	0	0	
7	1	30-Mar-21	09-Jun-21	Chum	571	40	0.7	0	0	0	0	0	0	0	0	0	0	0	0	0	0	0	0	0	0	0	0	
7	1	30-Mar-21	09-Jun-21	Chum	572	38	0.7	0	0	0	0	0	0	0	0	0	0	0	0	0	0	0	0	0	0	0	0	
7	1	30-Mar-21	09-Jun-21	Chum	573	36	0.5	0	0	0	0	0	0	0	0	0	0	0	0	0	0	0	0	0	0	0	0	
7	1	30-Mar-21	09-Jun-21	Chum	574	35	0.5	0	0	0	0	0	0	0	0	0	0	0	0	0	0	0	0	0	0	0	0	
7	1	30-Mar-21	09-Jun-21	Chum	575	43	0.8	0	0	0	0	0	0	0	0	0	0	0	0	0	0	0	0	0	0	0	0	
7	1	30-Mar-21	09-Jun-21	Chum	576	40	0.8	0	0	0	0	0	0	0	0	0	0	0	0	0	0	0	0	0	0	0	0	
7	1	30-Mar-21	09-Jun-21	Chum	577	41	0.8	0	0	0	0	0	0	0	0	0	0	0	0	0	0	0	0	0	0	0	0	
7	1	30-Mar-21	09-Jun-21	Chum	578	39	0.6	0	0	0	0	0	0	0	0	0	0	0	0	0	0	0	0	0	0	0	0	
7	1	30-Mar-21	09-Jun-21	Chum	579	34	0.4	0	0	0	0	0	0	0	0	0	0	0	0	0	0	0	0	0	0	0	0	
7	1	30-Mar-21	09-Jun-21	Chum	580	40	0.8	0	0	0	0	0	0	0	0	0	0	0	0	0	0	0	0	0	0	0	0	
7	1	30-Mar-21	09-Jun-21	Chum	581	41	0.8	0	0	0	0	0	0	0	0	0	0	0	0	0	0	0	0	0	0	0	0	
7	1	30-Mar-21	09-Jun-21	Chum	582	33	0.4	0	0	0	0	0	0	0	0	0	0	0	0	0	0	0	0	0	0	0	0	
7	1	30-Mar-21	09-Jun-21	Chum	583	43	0.1	0	0	0	0	0	0	0	0	0	0	0	0	0	0	0	0	0	0	0	0	
7	1	30-Mar-21	09-Jun-21	Chum	584	38	0.7	0	0	0	0	0	0	0	0	0	0	0	0	0	0	0	0	0	0	0	0	
7	1	30-Mar-21	09-Jun-21	Chum	585	37	0.5	0	0	0	0	0	0	0	0	0	0	0	0	0	0	0	0	0	0	0	0	
7	1	30-Mar-21	09-Jun-21	Chum	586	35	0.5	0	0	0	0	0	0	0	0	0	0	0	0	0	0	0	0	0	0	0	0	
7	1	30-Mar-21	09-Jun-21	Chum	587	39	0.7	0	0	0	0	0	0	0	0	0	0	0	0	0	0	0	0	0	0	0	0	
7	1	30-Mar-21	09-Jun-21	Chum	588	40	0.7	0	0	0	0	0	0	0	0	0	0	0	0	0	0	0	0	0	0	0	0	
8	1	30-Mar-21	22-Apr-21	Chum	97	47	0.8	0	0	0	0	0	0	0	0	0	0	0	0	0	0	0	0	0	0	0	0	
8	1	30-Mar-21	22-Apr-21	Chum	98	44	0.7	0	0	0	0	0	0	0	0	0	0	0	0	0	0	0	0	0	0	0	0	
8	1	30-Mar-21	22-Apr-21	Chum	99	46	0.9	0	0	0	0	0	0	0	0	0	0	0	0	0	0	0	0	0	0	0	0	
8	1	30-Mar-21	22-Apr-21	Chum	100	55	1.6	0	0	0	0	0	0	0	0	0	0	0	0	0	0	0	0	0	0	0	0	
8	1	30-Mar-21	22-Apr-21	Chum	101	50	1.1	0	0	0	0	0	0	0	0	0	0	0	0	0	0	0	0	0	0	0	0	
8	1	30-Mar-21	22-Apr-21	Chum	102	46	0.9	0	0	0	0	0	0	0	0	0	0	0	0	0	0	0	0	0	0	0	0	
8	1	30-Mar-21	22-Apr-21	Chum	103	38	0.4	0	0	0	0	0	0	0	0	0	0	0	0	0	0	0	0	0	0	0	0	
9	1	30-Mar-21	22-Apr-21	Chum	69	44	0.8	0	0	0	0	0	0	0	0	0	0	0	0	0	0	0	0	0	0	0	0	

SITE	WEEK	DATE COLLECTED	DATE EXAMINED	FISH SPECIES	FISH NUMBER	LENGTH IN MM	WEIGHT IN G	LEP Co	LEP C1	LEP C2	LEP NM NOT ID	LEP PAM	LEP PAF	LEP AM	LEP AF	LEP MOT NOT ID	CAL Co	CAL C1	CAL C2	CAL C3	CAL C4	CAL NM NOT ID	CAL PAM	CAL PAF	CAL AM	CAL AF	CAL MOT NOT ID	TOT LICE ID
9	1	30-Mar-21	22-Apr-21	Chum	70	40	0.6	0	0	0	0	0	0	0	0	0	0	0	0	0	0	0	0	0	0	0	0	
9	1	30-Mar-21	22-Apr-21	Chum	71	36	0.4	0	0	0	0	0	0	0	0	0	0	0	0	0	0	0	0	0	0	0	0	
9	1	30-Mar-21	22-Apr-21	Chum	72	41	0.7	0	0	0	0	0	0	0	0	0	0	0	0	0	0	0	0	0	0	0	0	
9	1	30-Mar-21	22-Apr-21	Chum	73	38	0.5	0	0	0	0	0	0	0	0	0	0	0	0	0	0	0	0	0	0	0	0	
9	1	30-Mar-21	22-Apr-21	Chum	74	37	0.4	0	0	0	0	0	0	0	0	0	0	0	0	0	0	0	0	0	0	0	0	
9	1	30-Mar-21	22-Apr-21	Chum	75	48	1.1	0	0	0	0	0	0	0	0	0	0	0	0	0	0	0	0	0	0	0	0	
9	1	30-Mar-21	22-Apr-21	Chum	76	41	0.8	0	0	0	0	0	0	0	0	0	0	0	0	0	0	0	0	0	0	0	0	
9	1	30-Mar-21	22-Apr-21	Chum	77	39	0.6	0	0	0	0	0	0	0	0	0	0	0	0	0	0	0	0	0	0	0	0	
9	1	30-Mar-21	22-Apr-21	Chum	78	45	0.9	0	0	0	0	0	0	0	0	0	0	0	0	0	0	0	0	0	0	0	0	
9	1	30-Mar-21	22-Apr-21	Chum	79	50	1.2	0	0	0	0	0	0	0	0	0	0	0	0	0	0	0	0	0	0	0	0	
9	1	30-Mar-21	22-Apr-21	Chum	80	44	0.9	0	0	0	0	0	0	0	0	0	0	0	0	0	0	0	0	0	0	0	0	
9	1	30-Mar-21	22-Apr-21	Chum	81	43	0.8	0	0	0	0	0	0	0	0	0	0	0	0	0	0	0	0	0	0	0	0	
9	1	30-Mar-21	22-Apr-21	Chum	82	39	0.5	0	0	0	0	0	0	0	0	0	0	0	0	0	0	0	0	0	0	0	0	
9	1	30-Mar-21	22-Apr-21	Chum	83	47	1.1	0	0	0	0	0	0	0	0	0	0	0	0	0	0	0	0	0	0	0	0	
9	1	30-Mar-21	22-Apr-21	Chum	84	38	0.6	0	0	0	0	0	0	0	0	0	0	0	0	0	0	0	0	0	0	0	0	
9	1	30-Mar-21	22-Apr-21	Chum	85	39	0.6	0	0	0	0	0	0	0	0	0	0	0	0	0	0	0	0	0	0	0	0	
9	1	30-Mar-21	22-Apr-21	Chum	86	43	0.8	0	0	0	0	0	0	0	0	0	0	0	0	0	0	0	0	0	0	0	0	
9	1	30-Mar-21	22-Apr-21	Chum	87	42	0.8	0	0	0	0	0	0	0	0	0	0	0	0	0	0	0	0	0	0	0	0	
9	1	30-Mar-21	22-Apr-21	Chum	88	42	0.7	0	0	0	0	0	0	0	0	0	0	0	0	0	0	0	0	0	0	0	0	
9	1	30-Mar-21	22-Apr-21	Chum	89	39	0.5	0	0	0	0	0	0	0	0	0	0	0	0	0	0	0	0	0	0	0	0	
9	1	30-Mar-21	22-Apr-21	Chum	90	46	1.1	0	0	0	0	0	0	0	0	0	0	0	0	0	0	0	0	0	0	0	0	
9	1	30-Mar-21	22-Apr-21	Chum	91	41	0.6	0	0	0	0	0	0	0	0	0	0	0	0	0	0	0	0	0	0	0	0	
9	1	30-Mar-21	22-Apr-21	Chum	92	42	0.7	0	0	0	0	0	0	0	0	0	0	0	0	0	0	0	0	0	0	0	0	
9	1	30-Mar-21	22-Apr-21	Chum	93	45	1.0	0	0	0	0	0	0	0	0	0	0	0	0	0	0	0	0	0	0	0	0	
9	1	30-Mar-21	22-Apr-21	Chinook	94	41	0.8	0	0	0	0	0	0	0	0	0	0	0	0	0	0	0	0	0	0	0	0	
9	1	30-Mar-21	22-Apr-21	Chinook	95	41	0.9	0	0	0	0	0	0	0	0	0	0	0	0	0	0	0	0	0	0	0	0	
9	1	30-Mar-21	22-Apr-21	Chinook	96	42	0.8	0	0	0	0	0	0	0	0	0	0	0	0	0	0	0	0	0	0	0	0	
11	1	30-Mar-21	22-Apr-21	Chum	33	40	0.5	0	0	0	0	0	0	0	0	0	0	0	0	0	0	0	0	0	0	0	0	
11	1	30-Mar-21	22-Apr-21	Chum	34	42	0.6	0	0	0	0	0	0	0	0	0	0	0	0	0	0	0	0	0	0	0	0	
11	1	30-Mar-21	22-Apr-21	Chum	35	40	0.4	0	0	0	0	0	0	0	0	0	0	0	0	0	0	0	0	0	0	0	0	
11	1	30-Mar-21	22-Apr-21	Chum	36	38	0.4	0	0	0	0	0	0	0	0	0	0	0	0	0	0	0	0	0	0	0	0	
11	1	30-Mar-21	22-Apr-21	Chum	37	40	0.6	0	0	0	0	0	0	0	0	0	0	0	0	0	0	0	0	0	0	0	0	
11	1	30-Mar-21	22-Apr-21	Chum	38	38	0.4	0	0	0	0	0	0	0	0	0	0	0	0	0	0	0	0	0	0	0	0	
11	1	30-Mar-21	22-Apr-21	Chum	39	40	0.6	0	0	0	0	0	0	0	0	0	0	0	0	0	0	0	0	0	0	0	0	
11	1	30-Mar-21	22-Apr-21	Chum	40	42	0.7	0	0	0	0	0	0	0	0	0	0	0	0	0	0	0	0	0	0	0	0	
11	1	30-Mar-21	22-Apr-21	Chum	41	37	0.4	0	0	0	0	0	0	0	0	0	0	0	0	0	0	0	0	0	0	0	0	
11	1	30-Mar-21	22-Apr-21	Chum	42	38	0.4	0	0	0	0	0	0	0	0	0	0	0	0	0	0	0	0	0	0	0	0	
11	1	30-Mar-21	22-Apr-21	Chum	43	39	0.4	0	0	0	0	0	0	0	0	0	0	0	0	0	0	0	0	0	0	0	0	
11	1	30-Mar-21	22-Apr-21	Chum	44	38	0.3	0	0	0	0	0	0	0	0	0	0	0	0	0	0	0	0	0	0	0	0	
11	1	30-Mar-21	22-Apr-21	Chum	45	40	0.4	0	0	0	0	0	0	0	0	0	0	0	0	0	0	0	0	0	0	0	0	
11	1	30-Mar-21	22-Apr-21	Chum	46	41	0.6	0	0	0	0	0	0	0	0	0	0	0	0	0	0	0	0	0	0	0	0	
11	1	30-Mar-21	22-Apr-21	Chum	47	43	0.8	0	0	0	0	0	0	0	0	0	0	0	0	0	0	0	0	0	0	0	0	

SITE	WEEK	DATE COLLECTED	DATE EXAMINED	FISH SPECIES	FISH NUMBER	LENGTH IN MM	WEIGHT IN G	LEP Co	LEP C1	LEP C2	LEP NM NOT ID	LEP PAM	LEP PAF	LEP AM	LEP AF	LEP MOT NOT ID	CAL Co	CAL C1	CAL C2	CAL C3	CAL C4	CAL NM NOT ID	CAL PAM	CAL PAF	CAL AM	CAL AF	CAL MOT NOT ID	TOT LICE ID
11	1	30-Mar-21	22-Apr-21	Chum	48	38	0.4	0	0	0	0	0	0	0	0	0	0	0	0	0	0	0	0	0	0	0	0	
11	1	30-Mar-21	22-Apr-21	Chum	49	39	0.6	0	0	0	0	0	0	0	0	0	0	0	0	0	0	0	0	0	0	0	0	
11	1	30-Mar-21	22-Apr-21	Chum	50	43	0.7	0	0	0	0	0	0	0	0	0	0	0	0	0	0	0	0	0	0	0	0	
11	1	30-Mar-21	22-Apr-21	Chum	51	40	0.6	0	0	0	0	0	0	0	0	0	0	0	0	0	0	0	0	0	0	0	0	
11	1	30-Mar-21	22-Apr-21	Chum	52	39	0.5	0	0	0	0	0	0	0	0	0	0	0	0	0	0	0	0	0	0	0	0	
11	1	30-Mar-21	22-Apr-21	Chum	53	40	0.6	0	0	0	0	0	0	0	0	0	0	0	0	0	0	0	0	0	0	0	0	
11	1	30-Mar-21	22-Apr-21	Chum	54	38	0.5	0	0	0	0	0	0	0	0	0	0	0	0	0	0	0	0	0	0	0	0	
11	1	30-Mar-21	22-Apr-21	Chum	55	37	0.4	0	0	0	0	0	0	0	0	0	0	0	0	0	0	0	0	0	0	0	0	
11	1	30-Mar-21	22-Apr-21	Chum	56	38	0.5	0	0	0	0	0	0	0	0	0	0	0	0	0	0	0	0	0	0	0	0	
11	1	30-Mar-21	22-Apr-21	Chum	57	39	0.4	0	0	0	0	0	0	0	0	0	0	0	0	0	0	0	0	0	0	0	0	
11	1	30-Mar-21	22-Apr-21	Chum	58	38	0.4	0	0	0	0	0	0	0	0	0	0	0	0	0	0	0	0	0	0	0	0	
11	1	30-Mar-21	22-Apr-21	Chum	59	38	0.4	0	0	0	0	0	0	0	0	0	0	0	0	0	0	0	0	0	0	0	0	
11	1	30-Mar-21	22-Apr-21	Chum	60	39	0.5	0	0	0	0	0	0	0	0	0	0	0	0	0	0	0	0	0	0	0	0	
11	1	30-Mar-21	22-Apr-21	Chum	61	37	0.4	0	0	0	0	0	0	0	0	0	0	0	0	0	0	0	0	0	0	0	0	
11	1	30-Mar-21	22-Apr-21	Chum	62	42	0.7	0	0	0	0	0	0	0	0	0	0	0	0	0	0	0	0	0	0	0	0	
11	1	30-Mar-21	22-Apr-21	Chinook	63	44	0.9	0	0	0	0	0	0	0	0	0	0	0	0	0	0	0	0	0	0	0	0	
11	1	30-Mar-21	22-Apr-21	Chinook	64	42	0.6	0	0	0	0	0	0	0	0	0	0	0	0	0	0	0	0	0	0	0	0	
11	1	30-Mar-21	22-Apr-21	Chinook	65	43	0.8	0	0	0	0	0	0	0	0	0	0	0	0	0	0	0	0	0	0	0	0	
11	1	30-Mar-21	22-Apr-21	Chinook	66	42	0.6	0	0	0	0	0	0	0	0	0	0	0	0	0	0	0	0	0	0	0	0	
11	1	30-Mar-21	22-Apr-21	Chinook	67	46	1.0	0	0	0	0	0	0	0	0	0	0	0	0	0	0	0	0	0	0	0	0	
1	2	13-Apr-21	22-Apr-21	Chum	138	39	0.6	0	0	0	0	0	0	0	0	0	0	0	0	0	0	0	0	0	0	0	0	
1	2	13-Apr-21	22-Apr-21	Chum	139	38	0.5	0	0	0	0	0	0	0	0	0	0	0	0	0	0	0	0	0	0	0	0	
1	2	13-Apr-21	22-Apr-21	Chum	140	37	0.5	0	0	0	0	0	0	0	0	0	0	0	0	0	0	0	0	0	0	0	0	
1	2	13-Apr-21	22-Apr-21	Chum	141	36	0.4	0	0	0	0	0	0	0	0	0	0	0	0	0	0	0	0	0	0	0	0	
1	2	13-Apr-21	22-Apr-21	Chum	142	45	0.8	0	0	0	0	0	0	0	0	0	0	0	0	0	0	0	0	0	0	0	0	
1	2	13-Apr-21	22-Apr-21	Chum	143	43	0.8	0	0	0	0	0	0	0	0	0	0	0	0	0	0	0	0	0	0	0	0	
1	2	13-Apr-21	22-Apr-21	Chum	144	45	0.9	0	0	0	0	0	0	0	0	0	0	0	0	0	0	0	0	0	0	0	0	
1	2	13-Apr-21	22-Apr-21	Chum	145	48	1.1	0	0	0	0	0	0	0	0	0	0	0	0	0	0	0	0	0	0	0	0	
1	2	13-Apr-21	22-Apr-21	Chum	146	41	0.7	0	0	0	0	0	0	0	0	0	0	0	0	0	0	0	0	0	0	0	0	
1	2	13-Apr-21	22-Apr-21	Chum	147	39	0.6	0	0	0	0	0	0	0	0	0	0	0	0	0	0	0	0	0	0	0	0	
1	2	13-Apr-21	22-Apr-21	Chum	148	45	0.8	0	0	0	0	0	0	0	0	0	0	0	0	0	0	0	0	0	0	0	0	
1	2	13-Apr-21	22-Apr-21	Chum	149	37	0.5	0	0	0	0	0	0	0	0	0	0	0	0	0	0	0	0	0	0	0	0	
1	2	13-Apr-21	22-Apr-21	Chum	150	39	0.6	0	0	0	0	0	0	0	0	0	0	0	0	0	0	0	0	0	0	0	0	
1	2	13-Apr-21	22-Apr-21	Chum	151	41	0.7	0	0	0	0	0	0	0	0	0	0	0	0	0	0	0	0	0	0	0	0	
1	2	13-Apr-21	22-Apr-21	Chum	152	41	0.7	0	0	0	0	0	0	0	0	0	0	0	0	0	0	0	0	0	0	0	0	
1	2	13-Apr-21	22-Apr-21	Chum	153	42	0.8	0	0	0	0	0	0	0	0	0	0	0	0	0	0	0	0	0	0	0	0	
1	2	13-Apr-21	22-Apr-21	Chum	154	46	0.9	0	0	0	0	0	0	0	0	0	0	0	0	0	0	0	0	0	0	0	0	
1	2	13-Apr-21	22-Apr-21	Chum	155	42	0.8	0	0	0	0	0	0	0	0	0	0	0	0	0	0	0	0	0	0	0	0	
1	2	13-Apr-21	22-Apr-21	Chum	156	41	0.7	0	0	0	0	0	0	0	0	0	0	0	0	0	0	0	0	0	0	0	0	
1	2	13-Apr-21	22-Apr-21	Chum	157	42	0.8	0	0	0	0	0	0	0	0	0	0	0	0	0	0	0	0	0	0	0	0	
1	2	13-Apr-21	22-Apr-21	Chum	158	36	0.4	0	0	0	0	0	0	0	0	0	0	0	0	0	0	0	0	0	0	0	0	
1	2	13-Apr-21	22-Apr-21	Chum	159	41	0.7	0	0	0	0	0	0	0	0	0	0	0	0	0	0	0	0	0	0	0	0	

SITE	WEEK	DATE COLLECTED	DATE EXAMINED	FISH SPECIES	FISH NUMBER	LENGTH IN MM	WEIGHT IN G	LEP Co	LEP C1	LEP C2	LEP NM NOT ID	LEP PAM	LEP PAF	LEP AM	LEP AF	LEP MOT NOT ID	CAL Co	CAL C1	CAL C2	CAL C3	CAL C4	CAL NM NOT ID	CAL PAM	CAL PAF	CAL AM	CAL AF	CAL MOT NOT ID	TOT LICE ID
1	2	13-Apr-21	22-Apr-21	Chum	160	39	0.6	0	0	0	0	0	0	0	0	0	0	0	0	0	0	0	0	0	0	0	0	
1	2	13-Apr-21	22-Apr-21	Chum	161	45	0.9	0	0	0	0	0	0	0	0	0	0	0	0	0	0	0	0	0	0	0	0	
1	2	13-Apr-21	22-Apr-21	Chum	162	45	0.9	0	0	0	0	0	0	0	0	0	0	0	0	0	0	0	0	0	0	0	0	
1	2	13-Apr-21	22-Apr-21	Chum	163	39	0.6	0	0	0	0	0	0	0	0	0	0	0	0	0	0	0	0	0	0	0	0	
1	2	13-Apr-21	22-Apr-21	Chum	164	43	0.8	0	0	0	0	0	0	0	0	0	0	0	0	0	0	0	0	0	0	0	0	
1	2	13-Apr-21	22-Apr-21	Chum	165	41	0.7	0	0	0	0	0	0	0	0	0	0	0	0	0	0	0	0	0	0	0	0	
1	2	13-Apr-21	22-Apr-21	Chum	166	36	0.5	0	0	0	0	0	0	0	0	0	0	0	0	0	0	0	0	0	0	0	0	
1	2	13-Apr-21	22-Apr-21	Chum	167	45	0.9	0	0	0	0	0	0	0	0	0	0	0	0	0	0	0	0	0	0	0	0	
1	2	13-Apr-21	22-Apr-21	Chinook	168	40	0.8	0	0	0	0	0	0	0	0	0	0	0	0	0	0	0	0	0	0	0	0	
1	2	13-Apr-21	22-Apr-21	Chinook	169	45	1.2	0	0	0	0	0	0	0	0	0	0	0	0	0	0	0	0	0	0	0	0	
1	2	13-Apr-21	22-Apr-21	Chinook	170	41	0.9	0	0	0	0	0	0	0	0	0	0	0	0	0	0	0	0	0	0	0	0	
1	2	13-Apr-21	22-Apr-21	Chinook	171	39	0.6	0	0	0	0	0	0	0	0	0	0	0	0	0	0	0	0	0	0	0	0	
1	2	13-Apr-21	22-Apr-21	Chinook	172	50	1.7	0	0	0	0	0	0	0	0	0	0	0	0	0	0	0	0	0	0	0	0	
1	2	13-Apr-21	22-Apr-21	Chinook	173	41	0.8	0	0	0	0	0	0	0	0	0	0	0	0	0	0	0	0	0	0	0	0	
1	2	13-Apr-21	22-Apr-21	Chinook	174	44	1.0	0	0	0	0	0	0	0	0	0	0	0	0	0	0	0	0	0	0	0	0	
1	2	13-Apr-21	22-Apr-21	Chinook	175	44	1.0	0	0	0	0	0	0	0	0	0	0	0	0	0	0	0	0	0	0	0	0	
1	2	13-Apr-21	22-Apr-21	Chinook	176	43	1.0	0	0	0	0	0	0	0	0	0	0	0	0	0	0	0	0	0	0	0	0	
1	2	13-Apr-21	22-Apr-21	Chinook	177	40	0.7	0	0	0	0	0	0	0	0	0	0	0	0	0	0	0	0	0	0	0	0	
1	2	13-Apr-21	22-Apr-21	Chinook	178	43	1.0	0	0	0	0	0	0	0	0	0	0	0	0	0	0	0	0	0	0	0	0	
1	2	13-Apr-21	22-Apr-21	Chinook	179	43	1.0	0	0	0	0	0	0	0	0	0	0	0	0	0	0	0	0	0	0	0	0	
1	2	13-Apr-21	22-Apr-21	Chinook	180	50	1.7	0	0	0	0	0	0	0	0	0	0	0	0	0	0	0	0	0	0	0	0	
1	2	13-Apr-21	22-Apr-21	Chinook	181	43	1.0	0	0	0	0	0	0	0	0	0	0	0	0	0	0	0	0	0	0	0	0	
1	2	13-Apr-21	22-Apr-21	Chinook	182	39	0.6	0	0	0	0	0	0	0	0	0	0	0	0	0	0	0	0	0	0	0	0	
1	2	13-Apr-21	22-Apr-21	Chinook	183	42	0.8	0	0	0	0	0	0	0	0	0	0	0	0	0	0	0	0	0	0	0	0	
1	2	13-Apr-21	22-Apr-21	Chinook	184	42	0.8	0	0	0	0	0	0	0	0	0	0	0	0	0	0	0	0	0	0	0	0	
1	2	13-Apr-21	22-Apr-21	Chinook	185	40	0.7	0	0	0	0	0	0	0	0	0	0	0	0	0	0	0	0	0	0	0	0	
1	2	13-Apr-21	22-Apr-21	Chinook	186	40	0.7	0	0	0	0	0	0	0	0	0	0	0	0	0	0	0	0	0	0	0	0	
1	2	13-Apr-21	22-Apr-21	Coho	187	69	4.1	0	0	0	0	0	0	0	0	0	0	0	0	0	0	0	0	0	0	0	0	
3	2	13-Apr-21	22-Apr-21	Chum	3	43	0.7	0	0	0	0	0	0	0	0	0	0	0	0	0	0	0	0	0	0	0	0	
3	2	13-Apr-21	22-Apr-21	Chum	4	39	0.6	0	0	0	0	0	0	0	0	0	0	0	0	0	0	0	0	0	0	0	0	
3	2	13-Apr-21	22-Apr-21	Chum	5	43	0.8	0	0	0	0	0	0	0	0	0	0	0	0	0	0	0	0	0	0	0	0	
3	2	13-Apr-21	22-Apr-21	Chum	6	37	0.5	0	0	0	0	0	0	0	0	0	0	0	0	0	0	0	0	0	0	0	0	
3	2	13-Apr-21	22-Apr-21	Chum	7	50	1.4	0	0	0	0	0	0	0	0	0	0	0	0	0	0	0	0	0	0	0	0	
3	2	13-Apr-21	22-Apr-21	Chum	8	42	0.8	0	0	0	0	0	0	0	0	0	0	0	0	0	0	0	0	0	0	0	0	
3	2	13-Apr-21	22-Apr-21	Chum	9	51	1.5	0	0	0	0	0	0	0	0	0	0	0	0	0	0	0	0	0	0	0	0	
3	2	13-Apr-21	22-Apr-21	Chum	10	48	1.2	0	0	0	0	0	0	0	0	0	0	0	0	0	0	0	0	0	0	0	0	
3	2	13-Apr-21	22-Apr-21	Chum	11	40	0.7	0	0	0	0	0	0	0	0	0	0	0	0	0	0	0	0	0	0	0	0	
3	2	13-Apr-21	22-Apr-21	Chum	12	57	2.1	0	0	0	0	0	0	0	0	0	0	0	0	0	0	0	0	0	0	0	0	
3	2	13-Apr-21	22-Apr-21	Chum	13	39	0.6	0	0	0	0	0	0	0	0	0	0	0	0	0	0	0	0	0	0	0	0	
3	2	13-Apr-21	22-Apr-21	Chum	14	46	1.1	0	0	0	0	0	0	0	0	0	0	0	0	0	0	0	0	0	0	0	0	
3	2	13-Apr-21	22-Apr-21	Chum	15	40	0.8	0	0	0	0	0	0	0	0	0	0	0	0	0	0	0	0	0	0	0	0	
3	2	13-Apr-21	22-Apr-21	Chum	16	39	0.6	0	0	0	0	0	0	0	0	0	0	0	0	0	0	0	0	0	0	0	0	

SITE	WEEK	DATE COLLECTED	DATE EXAMINED	FISH SPECIES	FISH NUMBER	LENGTH IN MM	WEIGHT IN G	LEP Co	LEP C1	LEP C2	LEP NM NOT ID	LEP PAM	LEP PAF	LEP AM	LEP AF	LEP MOT NOT ID	CAL Co	CAL C1	CAL C2	CAL C3	CAL C4	CAL NM NOT ID	CAL PAM	CAL PAF	CAL AM	CAL AF	CAL MOT NOT ID	TOT LICE ID
3	2	13-Apr-21	22-Apr-21	Chum	17	38	0.6	0	0	0	0	0	0	0	0	0	0	0	0	0	0	0	0	0	0	0	0	
3	2	13-Apr-21	22-Apr-21	Chum	18	39	0.6	0	0	0	0	0	0	0	0	0	0	0	0	0	0	0	0	0	0	0	0	
3	2	13-Apr-21	22-Apr-21	Chum	19	42	0.7	0	0	0	0	0	0	0	0	0	0	0	0	0	0	0	0	0	0	0	0	
3	2	13-Apr-21	22-Apr-21	Chum	20	41	0.8	0	0	0	0	0	0	0	0	0	0	0	0	0	0	0	0	0	0	0	0	
3	2	13-Apr-21	22-Apr-21	Chum	21	38	0.5	0	0	0	0	0	0	0	0	0	0	0	0	0	0	0	0	0	0	0	0	
3	2	13-Apr-21	22-Apr-21	Chum	22	59	2.3	0	0	0	0	0	0	0	0	0	0	0	0	0	0	0	0	0	0	0	0	
3	2	13-Apr-21	22-Apr-21	Chum	23	37	0.5	0	0	0	0	0	0	0	0	0	0	0	0	0	0	0	0	0	0	0	0	
3	2	13-Apr-21	22-Apr-21	Chum	24	36	0.4	0	0	0	0	0	0	0	0	0	0	0	0	0	0	0	0	0	0	0	0	
3	2	13-Apr-21	22-Apr-21	Chum	25	40	0.7	0	0	0	0	0	0	0	0	0	0	0	0	0	0	0	0	0	0	0	0	
3	2	13-Apr-21	22-Apr-21	Chum	26	39	0.6	0	0	0	0	0	0	0	0	0	0	0	0	0	0	0	0	0	0	0	0	
3	2	13-Apr-21	22-Apr-21	Chum	27	40	0.7	0	0	0	0	0	0	0	0	0	0	0	0	0	0	0	0	0	0	0	0	
3	2	13-Apr-21	22-Apr-21	Chum	28	47	1.1	0	0	0	0	0	0	0	0	0	0	0	0	0	0	0	0	0	0	0	0	
3	2	13-Apr-21	22-Apr-21	Chum	29	50	1.4	0	0	0	0	0	0	0	0	0	0	0	0	0	0	0	0	0	0	0	0	
3	2	13-Apr-21	22-Apr-21	Chum	30	52	1.6	0	0	0	0	0	0	0	0	0	0	0	0	0	0	0	0	0	0	0	0	
3	2	13-Apr-21	22-Apr-21	Chum	31	40	0.6	0	0	0	0	0	0	0	0	0	0	0	0	0	0	0	0	0	0	0	0	
3	2	13-Apr-21	22-Apr-21	Chum	32	52	1.7	0	0	0	0	0	0	0	0	0	0	0	0	0	0	0	0	0	0	0	0	
4	2	13-Apr-21	22-Apr-21	Chum	233	40	0.7	0	0	0	0	0	0	0	0	0	0	0	0	0	0	0	0	0	0	0	0	
4	2	13-Apr-21	22-Apr-21	Chum	234	45	0.9	0	0	0	0	0	0	0	0	0	0	0	0	0	0	0	0	0	0	0	0	
4	2	13-Apr-21	22-Apr-21	Chum	235	37	0.6	0	0	0	0	0	0	0	0	0	0	0	0	0	0	0	0	0	0	0	0	
4	2	13-Apr-21	22-Apr-21	Chum	236	41	0.7	0	0	0	0	0	0	0	0	0	0	0	0	0	0	0	0	0	0	0	0	
4	2	13-Apr-21	22-Apr-21	Chum	237	39	0.6	0	0	0	0	0	0	0	0	0	0	0	0	0	0	0	0	0	0	0	0	
4	2	13-Apr-21	22-Apr-21	Chum	238	38	0.6	0	0	0	0	0	0	0	0	0	0	0	0	0	0	0	0	0	0	0	0	
4	2	13-Apr-21	22-Apr-21	Chum	239	41	0.7	0	0	0	0	0	0	0	0	0	0	0	0	0	0	0	0	0	0	0	0	
4	2	13-Apr-21	22-Apr-21	Chum	240	40	0.6	0	0	0	0	0	0	0	0	0	0	0	0	0	0	0	0	0	0	0	0	
4	2	13-Apr-21	22-Apr-21	Chum	241	40	0.6	0	0	0	0	0	0	0	0	0	0	0	0	0	0	0	0	0	0	0	0	
4	2	13-Apr-21	22-Apr-21	Chum	242	41	0.7	0	0	0	0	0	0	0	0	0	0	0	0	0	0	0	0	0	0	0	0	
4	2	13-Apr-21	22-Apr-21	Chum	243	40	0.6	0	0	0	0	0	0	0	0	0	0	0	0	0	0	0	0	0	0	0	0	
4	2	13-Apr-21	22-Apr-21	Chum	244	39	0.4	0	0	0	0	0	0	0	0	0	0	0	0	0	0	0	0	0	0	0	0	
4	2	13-Apr-21	22-Apr-21	Chum	245	43	0.8	0	0	0	0	0	0	0	0	0	0	0	0	0	0	0	0	0	0	0	0	
4	2	13-Apr-21	22-Apr-21	Chum	246	37	0.5	0	0	0	0	0	0	0	0	0	0	0	0	0	0	0	0	0	0	0	0	
4	2	13-Apr-21	22-Apr-21	Chum	247	44	0.8	0	0	0	0	0	0	0	0	0	0	0	0	0	0	0	0	0	0	0	0	
4	2	13-Apr-21	22-Apr-21	Chum	248	44	1.0	0	0	0	0	0	0	0	0	0	0	0	0	0	0	0	0	0	0	0	0	
4	2	13-Apr-21	22-Apr-21	Chum	249	38	0.6	0	0	0	0	0	0	0	0	0	0	0	0	0	0	0	0	0	0	0	0	
4	2	13-Apr-21	22-Apr-21	Chum	250	39	0.6	0	0	0	0	0	0	0	0	0	0	0	0	0	0	0	0	0	0	0	0	
4	2	13-Apr-21	22-Apr-21	Chum	251	41	0.7	0	0	0	0	0	0	0	0	0	0	0	0	0	0	0	0	0	0	0	0	
4	2	13-Apr-21	22-Apr-21	Chum	252	41	0.6	0	0	0	0	0	0	0	0	0	0	0	0	0	0	0	0	0	0	0	0	
4	2	13-Apr-21	22-Apr-21	Chum	253	40	0.7	0	0	0	0	0	0	0	0	0	0	0	0	0	0	0	0	0	0	0	0	
4	2	13-Apr-21	22-Apr-21	Chum	254	36	0.5	0	0	0	0	0	0	0	0	0	0	0	0	0	0	0	0	0	0	0	0	
4	2	13-Apr-21	22-Apr-21	Chum	255	39	0.6	0	0	0	0	0	0	0	0	0	0	0	0	0	0	0	0	0	0	0	0	
4	2	13-Apr-21	22-Apr-21	Chum	256	42	0.8	0	0	0	0	0	0	0	0	0	0	0	0	0	0	0	0	0	0	0	0	
4	2	13-Apr-21	22-Apr-21	Chum	257	41	0.7	0	0	0	0	0	0	0	0	0	0	0	0	0	0	0	0	0	0	0	0	
4	2	13-Apr-21	22-Apr-21	Chum	258	41	0.8	0	0	0	0	0	0	0	0	0	0	0	0	0	0	0	0	0	0	0	0	

SITE	WEEK	DATE COLLECTED	DATE EXAMINED	FISH SPECIES	FISH NUMBER	LENGTH IN MM	WEIGHT IN G	LEP Co	LEP C1	LEP C2	LEP NM NOT ID	LEP PAM	LEP PAF	LEP AM	LEP AF	LEP MOT NOT ID	CAL Co	CAL C1	CAL C2	CAL C3	CAL C4	CAL NM NOT ID	CAL PAM	CAL PAF	CAL AM	CAL AF	CAL MOT NOT ID	TOT LICE ID
4	2	13-Apr-21	22-Apr-21	Chum	259	39	0.5	0	0	0	0	0	0	0	0	0	0	0	0	0	0	0	0	0	0	0	0	
4	2	13-Apr-21	22-Apr-21	Chum	260	40	0.6	0	0	0	0	0	0	0	0	0	0	0	0	0	0	0	0	0	0	0	0	
4	2	13-Apr-21	22-Apr-21	Chum	261	38	0.5	0	0	0	0	0	0	0	0	0	0	0	0	0	0	0	0	0	0	0	0	
4	2	13-Apr-21	22-Apr-21	Chum	262	43	0.8	0	0	0	0	0	0	0	0	0	0	0	0	0	0	0	0	0	0	0	0	
5	2	13-Apr-21	22-Apr-21	Chum	104	43	0.7	0	2	0	0	0	0	0	0	0	0	0	0	0	0	0	0	0	0	0	2	
5	2	13-Apr-21	22-Apr-21	Chum	105	43	0.8	0	1	0	0	0	0	0	0	0	0	0	0	0	0	0	0	0	0	0	1	
5	2	13-Apr-21	22-Apr-21	Chum	106	40	0.6	0	0	0	0	0	0	0	0	0	0	0	0	0	0	0	0	0	0	0	0	
5	2	13-Apr-21	22-Apr-21	Chum	107	39	0.5	0	0	0	0	0	0	0	0	0	0	0	0	0	0	0	0	0	0	0	0	
5	2	13-Apr-21	22-Apr-21	Chum	108	38	0.5	0	0	0	0	0	0	0	0	0	0	0	0	0	0	0	0	0	0	0	0	
5	2	13-Apr-21	22-Apr-21	Chum	109	38	0.5	0	0	0	0	0	0	0	0	0	0	0	0	0	0	0	0	0	0	0	0	
5	2	13-Apr-21	22-Apr-21	Chum	110	38	0.5	0	0	0	0	0	0	0	0	0	0	0	0	0	0	0	0	0	0	0	0	
5	2	13-Apr-21	22-Apr-21	Chum	111	40	0.6	0	0	0	0	0	0	0	0	0	0	0	0	0	0	0	0	0	0	0	0	
5	2	13-Apr-21	22-Apr-21	Chum	112	40	0.6	0	0	0	0	0	0	0	0	0	0	0	0	0	0	0	0	0	0	0	0	
5	2	13-Apr-21	22-Apr-21	Chum	113	38	0.5	0	0	0	0	0	0	0	0	0	0	0	0	0	0	0	0	0	0	0	0	
5	2	13-Apr-21	22-Apr-21	Chum	114	38	0.5	0	0	0	0	0	0	0	0	0	0	0	0	0	0	0	0	0	0	0	0	
5	2	13-Apr-21	22-Apr-21	Chum	115	39	0.6	0	0	0	0	0	0	0	0	0	0	0	0	0	0	0	0	0	0	0	0	
5	2	13-Apr-21	22-Apr-21	Chum	116	43	0.7	0	0	0	0	0	0	0	0	0	0	0	0	0	0	0	0	0	0	0	0	
5	2	13-Apr-21	22-Apr-21	Chum	117	39	0.5	0	0	0	0	0	0	0	0	0	0	0	0	0	0	0	0	0	0	0	0	
5	2	13-Apr-21	22-Apr-21	Chum	118	39	0.6	0	0	0	0	0	0	0	0	0	0	0	0	0	0	0	0	0	0	0	0	
5	2	13-Apr-21	22-Apr-21	Chum	119	43	0.6	0	0	0	0	0	0	0	0	0	0	0	0	0	0	0	0	0	0	0	0	
5	2	13-Apr-21	22-Apr-21	Chum	120	39	0.5	0	0	0	0	0	0	0	0	0	0	0	0	0	0	0	0	0	0	0	0	
5	2	13-Apr-21	22-Apr-21	Chum	121	44	0.8	0	0	0	0	0	0	0	0	0	0	0	0	0	0	0	0	0	0	0	0	
5	2	13-Apr-21	22-Apr-21	Chum	122	47	1.1	0	0	0	0	0	0	0	0	0	0	0	0	0	0	0	0	0	0	0	0	
5	2	13-Apr-21	22-Apr-21	Chum	123	41	0.6	0	0	0	0	0	0	0	0	0	0	0	0	0	0	0	0	0	0	0	0	
5	2	13-Apr-21	22-Apr-21	Chum	124	39	0.5	0	0	0	0	0	0	0	0	0	0	0	0	0	0	0	0	0	0	0	0	
5	2	13-Apr-21	22-Apr-21	Chum	125	40	0.6	0	0	0	0	0	0	0	0	0	0	0	0	0	0	0	0	0	0	0	0	
5	2	13-Apr-21	22-Apr-21	Chum	126	40	0.6	0	0	0	0	0	0	0	0	0	0	0	0	0	0	0	0	0	0	0	0	
5	2	13-Apr-21	22-Apr-21	Chum	127	42	0.7	0	1	0	0	0	0	0	0	0	0	0	0	0	0	0	0	0	0	0	1	
5	2	13-Apr-21	22-Apr-21	Chum	128	38	0.5	0	0	0	0	0	0	0	0	0	0	0	0	0	0	0	0	0	0	0	0	
5	2	13-Apr-21	22-Apr-21	Chum	129	40	0.6	0	0	0	0	0	0	0	0	0	0	0	0	0	0	0	0	0	0	0	0	
5	2	13-Apr-21	22-Apr-21	Chum	130	37	0.5	0	0	0	0	0	0	0	0	0	0	0	0	0	0	0	0	0	0	0	0	
5	2	13-Apr-21	22-Apr-21	Chum	131	40	0.7	0	0	0	0	0	0	0	0	0	0	0	0	0	0	0	0	0	0	0	0	
5	2	13-Apr-21	22-Apr-21	Chum	132	43	0.8	0	0	0	0	0	0	0	0	0	0	0	0	0	0	0	0	0	0	0	0	
5	2	13-Apr-21	22-Apr-21	Chum	133	44	0.8	0	0	0	0	0	0	0	0	0	0	0	0	0	0	0	0	0	0	0	0	
5	2	13-Apr-21	22-Apr-21	Chinook	134	43	0.8	0	0	0	0	0	0	0	0	0	0	0	0	0	0	0	0	0	0	0	0	
5	2	13-Apr-21	22-Apr-21	Chinook	135	43	0.8	0	0	0	0	0	0	0	0	0	0	0	0	0	0	0	0	0	0	0	0	
5	2	13-Apr-21	22-Apr-21	Chinook	136	43	0.9	0	0	0	0	0	0	0	0	0	0	0	0	0	0	0	0	0	0	0	0	
5	2	13-Apr-21	22-Apr-21	Chinook	137	44	0.9	0	0	0	0	0	0	0	0	0	0	0	0	0	0	0	0	0	0	0	0	
6	2	13-Apr-21	22-Apr-21	Chum	1	34	0.3	0	0	0	0	0	0	0	0	0	0	0	0	0	0	0	0	0	0	0	0	
6	2	13-Apr-21	22-Apr-21	Chum	2	38	0.5	0	0	0	0	0	0	0	0	0	0	0	0	0	0	0	0	0	0	0	0	
8	2	13-Apr-21	22-Apr-21	Chum	203	39	0.5	0	0	0	0	0	0	0	0	0	0	0	0	0	0	0	0	0	0	0	0	
8	2	13-Apr-21	22-Apr-21	Chum	204	56	1.6	0	0	0	0	0	0	0	0	0	0	0	0	0	0	0	0	0	0	0	0	



SITE	WEEK	DATE COLLECTED	DATE EXAMINED	FISH SPECIES	FISH NUMBER	LENGTH IN MM	WEIGHT IN G	LEP Co	LEP C1	LEP C2	LEP NM NOT ID	LEP PAM	LEP PAF	LEP AM	LEP AF	LEP MOT NOT ID	CAL Co	CAL C1	CAL C2	CAL C3	CAL C4	CAL NM NOT ID	CAL PAM	CAL PAF	CAL AM	CAL AF	CAL MOT NOT ID	TOT LICE ID
8	2	13-Apr-21	22-Apr-21	Chum	205	50	1.2	0	0	0	0	0	0	0	0	0	0	0	0	0	0	0	0	0	0	0	0	
8	2	13-Apr-21	22-Apr-21	Chum	206	46	1.0	0	0	0	0	0	0	0	0	0	0	0	0	0	0	0	0	0	0	0	0	
8	2	13-Apr-21	22-Apr-21	Chum	207	53	1.5	0	0	0	0	0	0	0	0	0	0	0	0	0	0	0	0	0	0	0	0	
8	2	13-Apr-21	22-Apr-21	Chum	208	49	1.1	0	0	0	0	0	0	0	0	0	0	0	0	0	0	0	0	0	0	0	0	
8	2	13-Apr-21	22-Apr-21	Chum	209	49	1.2	0	0	0	0	0	0	0	0	0	0	0	0	0	0	0	0	0	0	0	0	
8	2	13-Apr-21	22-Apr-21	Chum	210	43	0.8	0	0	0	0	0	0	0	0	0	0	0	0	0	0	0	0	0	0	0	0	
8	2	13-Apr-21	22-Apr-21	Chum	211	50	1.3	0	0	0	0	0	0	0	0	0	0	0	0	0	0	0	0	0	0	0	0	
8	2	13-Apr-21	22-Apr-21	Chum	212	42	0.8	0	0	0	0	0	0	0	0	0	0	0	0	0	0	0	0	0	0	0	0	
8	2	13-Apr-21	22-Apr-21	Chum	213	48	1.2	0	0	0	0	0	0	0	0	0	0	0	0	0	0	0	0	0	0	0	0	
8	2	13-Apr-21	22-Apr-21	Chum	214	50	1.3	0	0	0	0	0	0	0	0	0	0	0	0	0	0	0	0	0	0	0	0	
8	2	13-Apr-21	22-Apr-21	Chum	215	53	1.2	0	0	0	0	0	0	0	0	0	0	0	0	0	0	0	0	0	0	0	0	
8	2	13-Apr-21	22-Apr-21	Chum	216	48	1.0	0	0	0	0	0	0	0	0	0	0	0	0	0	0	0	0	0	0	0	0	
8	2	13-Apr-21	22-Apr-21	Chum	217	48	1.2	0	0	0	0	0	0	0	0	0	0	0	0	0	0	0	0	0	0	0	0	
8	2	13-Apr-21	22-Apr-21	Chum	218	44	0.8	0	0	0	0	0	0	0	0	0	0	0	0	0	0	0	0	0	0	0	0	
8	2	13-Apr-21	22-Apr-21	Chum	219	45	1.0	0	0	0	0	0	0	0	0	0	0	0	0	0	0	0	0	0	0	0	0	
8	2	13-Apr-21	22-Apr-21	Chum	220	50	1.2	0	0	0	0	0	0	0	0	0	0	0	0	0	0	0	0	0	0	0	0	
8	2	13-Apr-21	22-Apr-21	Chum	221	48	1.1	0	0	0	0	0	0	0	0	0	0	0	0	0	0	0	0	0	0	0	0	
8	2	13-Apr-21	22-Apr-21	Chum	222	53	1.4	0	0	0	0	0	0	0	0	0	0	0	0	0	0	0	0	0	0	0	0	
8	2	13-Apr-21	22-Apr-21	Chum	223	50	1.2	0	0	0	0	0	0	0	0	0	0	0	0	0	0	0	0	0	0	0	0	
8	2	13-Apr-21	22-Apr-21	Chum	224	47	1.0	0	0	0	0	0	0	0	0	0	0	0	0	0	0	0	0	0	0	0	0	
8	2	13-Apr-21	22-Apr-21	Chum	225	44	0.9	0	0	0	0	0	0	0	0	0	0	0	0	0	0	0	0	0	0	0	0	
8	2	13-Apr-21	22-Apr-21	Chum	226	38	0.5	0	0	0	0	0	0	0	0	0	0	0	0	0	0	0	0	0	0	0	0	
8	2	13-Apr-21	22-Apr-21	Chum	227	47	1.0	0	0	0	0	0	0	0	0	0	0	0	0	0	0	0	0	0	0	0	0	
8	2	13-Apr-21	22-Apr-21	Chum	228	44	0.8	0	0	0	0	0	0	0	0	0	0	0	0	0	0	0	0	0	0	0	0	
8	2	13-Apr-21	22-Apr-21	Chum	229	47	1.1	0	0	0	0	0	0	0	0	0	0	0	0	0	0	0	0	0	0	0	0	
8	2	13-Apr-21	22-Apr-21	Chum	230	48	1.0	0	0	0	0	0	0	0	0	0	0	0	0	0	0	0	0	0	0	0	0	
8	2	13-Apr-21	22-Apr-21	Chum	231	52	1.5	0	0	0	0	0	0	0	0	0	0	0	0	0	0	0	0	0	0	0	0	
8	2	13-Apr-21	22-Apr-21	Chum	232	52	1.4	0	0	0	0	0	0	0	0	0	0	0	0	0	0	0	0	0	0	0	0	
9	2	13-Apr-21	09-Jun-21	Chum	554	44	1.0	0	0	0	0	0	0	0	0	0	0	0	0	0	0	0	0	0	0	0	0	
9	2	13-Apr-21	09-Jun-21	Stickleback	555	63	3.2	0	0	0	0	0	0	0	0	0	0	0	0	0	0	0	0	0	0	0	0	
9	2	13-Apr-21	09-Jun-21	Stickleback	556	61	3.3	0	0	0	0	0	0	0	0	0	0	0	0	0	0	0	0	0	0	0	0	
9	2	13-Apr-21	09-Jun-21	Stickleback	557	60	3.0	0	0	0	0	0	0	0	0	0	0	0	0	0	0	0	0	0	0	0	0	
9	2	13-Apr-21	09-Jun-21	Stickleback	558	66	3.4	0	0	0	0	0	0	0	0	0	0	0	0	0	0	0	0	0	0	0	0	
11	2	13-Apr-21	22-Apr-21	Chum	197	45	0.8	0	0	0	0	0	0	0	0	0	0	0	0	0	0	0	0	0	0	0	0	
11	2	13-Apr-21	22-Apr-21	Chum	198	40	0.7	0	0	0	0	0	0	0	0	0	0	0	0	0	0	0	0	0	0	0	0	
11	2	13-Apr-21	22-Apr-21	Chum	199	38	0.6	0	0	0	0	0	0	0	0	0	0	0	0	0	0	0	0	0	0	0	0	
11	2	13-Apr-21	22-Apr-21	Chum	200	43	0.7	0	0	0	0	0	0	0	0	0	0	0	0	0	0	0	0	0	0	0	0	
11	2	13-Apr-21	22-Apr-21	Chum	201	43	0.8	0	0	0	0	0	0	0	0	0	0	0	0	0	0	0	0	0	0	0	0	
11	2	13-Apr-21	22-Apr-21	Chum	202	43	0.8	0	0	0	0	0	0	0	0	0	0	0	0	0	0	0	0	0	0	0	0	
1	3	27-Apr-21	08-Jun-21	Chum	369	36	0.5	0	0	0	0	0	0	0	0	0	0	0	0	0	0	0	0	0	0	0	0	
1	3	27-Apr-21	08-Jun-21	Chum	370	41	0.8	0	0	0	0	0	0	0	0	0	0	0	0	0	0	0	0	0	0	0	0	
1	3	27-Apr-21	08-Jun-21	Chum	371	45	1.0	0	0	0	0	0	0	0	0	0	0	0	0	0	0	0	0	0	0	0	0	

SITE	WEEK	DATE COLLECTED	DATE EXAMINED	FISH SPECIES	FISH NUMBER	LENGTH IN MM	WEIGHT IN G	LEP Co	LEP C1	LEP C2	LEP NM NOT ID	LEP PAM	LEP PAF	LEP AM	LEP AF	LEP MOT NOT ID	CAL Co	CAL C1	CAL C2	CAL C3	CAL C4	CAL NM NOT ID	CAL PAM	CAL PAF	CAL AM	CAL AF	CAL MOT NOT ID	TOT LICE ID
1	3	27-Apr-21	08-Jun-21	Chum	372	37	0.6	0	0	0	0	0	0	0	0	0	0	0	0	0	0	0	0	0	0	0	0	
1	3	27-Apr-21	08-Jun-21	Chum	373	43	0.9	0	0	0	0	0	0	0	0	0	0	0	0	0	0	0	0	0	0	0	0	
1	3	27-Apr-21	08-Jun-21	Chum	374	37	0.5	0	0	0	0	0	0	0	0	0	0	0	0	0	0	0	0	0	0	0	0	
1	3	27-Apr-21	08-Jun-21	Chum	375	46	1.2	0	0	0	0	0	0	0	0	0	0	0	0	0	0	0	0	0	0	0	0	
1	3	27-Apr-21	08-Jun-21	Chum	376	47	1.2	0	0	0	0	0	0	0	0	0	0	0	0	0	0	0	0	0	0	0	0	
1	3	27-Apr-21	08-Jun-21	Chum	377	44	1.1	0	0	0	0	0	0	0	0	0	0	0	0	0	0	0	0	0	0	0	0	
1	3	27-Apr-21	08-Jun-21	Chum	378	43	1.1	0	0	0	0	0	0	0	0	0	0	0	0	0	0	0	0	0	0	0	0	
1	3	27-Apr-21	08-Jun-21	Chum	379	36	0.5	0	0	0	0	0	0	0	0	0	0	0	0	0	0	0	0	0	0	0	0	
1	3	27-Apr-21	08-Jun-21	Chum	380	45	1.2	0	0	0	0	0	0	0	0	0	0	0	0	0	0	0	0	0	0	0	0	
1	3	27-Apr-21	08-Jun-21	Chum	381	45	1.1	0	0	0	0	0	0	0	0	0	0	0	0	0	0	0	0	0	0	0	0	
1	3	27-Apr-21	08-Jun-21	Chum	382	40	0.8	0	0	0	0	0	0	0	0	0	0	0	0	0	0	0	0	0	0	0	0	
1	3	27-Apr-21	08-Jun-21	Chum	383	42	0.9	0	0	0	0	0	0	0	0	0	0	0	0	0	0	0	0	0	0	0	0	
1	3	27-Apr-21	08-Jun-21	Chum	384	37	0.6	0	0	0	0	0	0	0	0	0	0	0	0	0	0	0	0	0	0	0	0	
1	3	27-Apr-21	08-Jun-21	Chum	385	46	1.2	0	0	0	0	0	0	0	0	0	0	0	0	0	0	0	0	0	0	0	0	
1	3	27-Apr-21	08-Jun-21	Chum	386	37	0.5	0	0	0	0	0	0	0	0	0	0	0	0	0	0	0	0	0	0	0	0	
1	3	27-Apr-21	08-Jun-21	Chum	387	41	0.8	0	0	0	0	0	0	0	0	0	0	0	0	0	0	0	0	0	0	0	0	
1	3	27-Apr-21	08-Jun-21	Chum	388	35	0.6	0	0	0	0	0	0	0	0	0	0	0	0	0	0	0	0	0	0	0	0	
1	3	27-Apr-21	08-Jun-21	Chum	389	44	1.1	0	0	0	0	0	0	0	0	0	0	0	0	0	0	0	0	0	0	0	0	
1	3	27-Apr-21	08-Jun-21	Chum	390	43	0.9	0	0	0	0	0	0	0	0	0	0	0	0	0	0	0	0	0	0	0	0	
1	3	27-Apr-21	08-Jun-21	Chum	391	41	0.9	0	0	0	0	0	0	0	0	0	0	0	0	0	0	0	0	0	0	0	0	
1	3	27-Apr-21	08-Jun-21	Chum	392	37	0.5	0	0	0	0	0	0	0	0	0	0	0	0	0	0	0	0	0	0	0	0	
1	3	27-Apr-21	08-Jun-21	Chum	393	37	0.7	0	0	0	0	0	0	0	0	0	0	0	0	0	0	0	0	0	0	0	0	
1	3	27-Apr-21	08-Jun-21	Chum	394	43	1.0	0	0	0	0	0	0	0	0	0	0	0	0	0	0	0	0	0	0	0	0	
1	3	27-Apr-21	08-Jun-21	Chum	395	43	1.0	0	0	0	0	0	0	0	0	0	0	0	0	0	0	0	0	0	0	0	0	
1	3	27-Apr-21	08-Jun-21	Chum	396	43	1.0	0	0	0	0	0	0	0	0	0	0	0	0	0	0	0	0	0	0	0	0	
1	3	27-Apr-21	08-Jun-21	Chum	397	45	1.0	0	0	0	0	0	0	0	0	0	0	0	0	0	0	0	0	0	0	0	0	
1	3	27-Apr-21	08-Jun-21	Chum	398	36	0.5	0	0	0	0	0	0	0	0	0	0	0	0	0	0	0	0	0	0	0	0	
1	3	27-Apr-21	08-Jun-21	Chinook	399	39	0.7	0	0	0	0	0	0	0	0	0	0	0	0	0	0	0	0	0	0	0	0	
1	3	27-Apr-21	08-Jun-21	Chinook	400	38	0.7	0	0	0	0	0	0	0	0	0	0	0	0	0	0	0	0	0	0	0	0	
1	3	27-Apr-21	08-Jun-21	Chinook	401	39	0.9	0	0	0	0	0	0	0	0	0	0	0	0	0	0	0	0	0	0	0	0	
1	3	27-Apr-21	08-Jun-21	Chinook	402	39	0.7	0	0	0	0	0	0	0	0	0	0	0	0	0	0	0	0	0	0	0	0	
1	3	27-Apr-21	08-Jun-21	Chinook	403	38	0.8	0	0	0	0	0	0	0	0	0	0	0	0	0	0	0	0	0	0	0	0	
1	3	27-Apr-21	08-Jun-21	Chinook	404	39	0.8	0	0	0	0	0	0	0	0	0	0	0	0	0	0	0	0	0	0	0	0	
1	3	27-Apr-21	08-Jun-21	Chinook	405	35	0.6	0	0	0	0	0	0	0	0	0	0	0	0	0	0	0	0	0	0	0	0	
1	3	27-Apr-21	08-Jun-21	Chinook	406	41	1.1	0	0	0	0	0	0	0	0	0	0	0	0	0	0	0	0	0	0	0	0	
1	3	27-Apr-21	08-Jun-21	Chinook	407	33	0.5	0	0	0	0	0	0	0	0	0	0	0	0	0	0	0	0	0	0	0	0	
1	3	27-Apr-21	08-Jun-21	Chinook	408	41	0.9	0	0	0	0	0	0	0	0	0	0	0	0	0	0	0	0	0	0	0	0	
1	3	27-Apr-21	08-Jun-21	Chinook	409	38	0.7	0	0	0	0	0	0	0	0	0	0	0	0	0	0	0	0	0	0	0	0	
1	3	27-Apr-21	08-Jun-21	Chinook	410	38	0.7	0	0	0	0	0	0	0	0	0	0	0	0	0	0	0	0	0	0	0	0	
1	3	27-Apr-21	08-Jun-21	Chinook	411	38	0.8	0	0	0	0	0	0	0	0	0	0	0	0	0	0	0	0	0	0	0	0	
1	3	27-Apr-21	08-Jun-21	Chinook	412	41	0.9	0	0	0	0	0	0	0	0	0	0	0	0	0	0	0	0	0	0	0	0	
1	3	27-Apr-21	08-Jun-21	Chinook	413	36	0.7	0	0	0	0	0	0	0	0	0	0	0	0	0	0	0	0	0	0	0	0	

SITE	WEEK	DATE COLLECTED	DATE EXAMINED	FISH SPECIES	FISH NUMBER	LENGTH IN MM	WEIGHT IN G	LEP Co	LEP C1	LEP C2	LEP NM NOT ID	LEP PAM	LEP PAF	LEP AM	LEP AF	LEP MOT NOT ID	CAL Co	CAL C1	CAL C2	CAL C3	CAL C4	CAL NM NOT ID	CAL PAM	CAL PAF	CAL AM	CAL AF	CAL MOT NOT ID	TOT LICE ID
1	3	27-Apr-21	08-Jun-21	Chinook	414	43	1.1	0	0	0	0	0	0	0	0	0	0	0	0	0	0	0	0	0	0	0	0	
1	3	27-Apr-21	08-Jun-21	Chinook	415	43	1.2	0	0	0	0	0	0	0	0	0	0	0	0	0	0	0	0	0	0	0	0	
1	3	27-Apr-21	08-Jun-21	Chinook	416	43	1.2	0	0	0	0	0	0	0	0	0	0	0	0	0	0	0	0	0	0	0	0	
1	3	27-Apr-21	08-Jun-21	Chinook	417	37	0.6	0	0	0	0	0	0	0	0	0	0	0	0	0	0	0	0	0	0	0	0	
1	3	27-Apr-21	08-Jun-21	Chinook	418	40	0.8	0	0	0	0	0	0	0	0	0	0	0	0	0	0	0	0	0	0	0	0	
1	3	27-Apr-21	08-Jun-21	Chinook	419	40	0.8	0	0	0	0	0	0	0	0	0	0	0	0	0	0	0	0	0	0	0	0	
1	3	27-Apr-21	08-Jun-21	Chinook	420	34	0.5	0	0	0	0	0	0	0	0	0	0	0	0	0	0	0	0	0	0	0	0	
1	3	27-Apr-21	08-Jun-21	Chinook	421	37	0.6	0	0	0	0	0	0	0	0	0	0	0	0	0	0	0	0	0	0	0	0	
1	3	27-Apr-21	08-Jun-21	Chinook	422	39	0.8	0	0	0	0	0	0	0	0	0	0	0	0	0	0	0	0	0	0	0	0	
1	3	27-Apr-21	08-Jun-21	Chinook	423	37	0.6	0	0	0	0	0	0	0	0	0	0	0	0	0	0	0	0	0	0	0	0	
1	3	27-Apr-21	08-Jun-21	Chinook	424	39	0.7	0	0	0	0	0	0	0	0	0	0	0	0	0	0	0	0	0	0	0	0	
1	3	27-Apr-21	08-Jun-21	Chinook	425	37	0.6	0	0	0	0	0	0	0	0	0	0	0	0	0	0	0	0	0	0	0	0	
1	3	27-Apr-21	08-Jun-21	Chinook	426	40	0.8	0	0	0	0	0	0	0	0	0	0	0	0	0	0	0	0	0	0	0	0	
1	3	27-Apr-21	08-Jun-21	Coho	427	34	0.5	0	0	0	0	0	0	0	0	0	0	0	0	0	0	0	0	0	0	0	0	
2	3	27-Apr-21	08-Jun-21	Stickleback	532	65	4.0	0	0	0	0	0	0	0	0	0	0	0	0	0	0	0	0	0	0	0	0	
3	3	27-Apr-21	07-Jun-21	Chum	358	39	0.7	0	0	0	0	0	0	0	0	0	0	0	0	0	0	0	0	0	0	0	0	
3	3	27-Apr-21	07-Jun-21	Chum	359	38	0.6	0	0	0	0	0	0	0	0	0	0	0	0	0	0	0	0	0	0	0	0	
3	3	27-Apr-21	07-Jun-21	Chum	360	44	0.9	0	0	0	0	0	0	0	0	0	0	0	0	0	0	0	0	0	0	0	0	
3	3	27-Apr-21	07-Jun-21	Chum	361	38	0.6	0	0	0	0	0	0	0	0	0	0	0	0	0	0	0	0	0	0	0	0	
3	3	27-Apr-21	07-Jun-21	Chum	362	39	0.6	0	0	0	0	0	0	0	0	0	0	0	0	0	0	0	0	0	0	0	0	
3	3	27-Apr-21	07-Jun-21	Chum	363	41	0.8	0	0	0	0	0	0	0	0	0	0	0	0	0	0	0	0	0	0	0	0	
3	3	27-Apr-21	07-Jun-21	Chum	364	39	0.6	0	0	0	0	0	0	0	0	0	0	0	0	0	0	0	0	0	0	0	0	
3	3	27-Apr-21	07-Jun-21	Chum	365	36	0.6	0	0	0	0	0	0	0	0	0	0	0	0	0	0	0	0	0	0	0	0	
3	3	27-Apr-21	07-Jun-21	Chum	366	39	0.6	0	0	0	0	0	0	0	0	0	0	0	0	0	0	0	0	0	0	0	0	
3	3	27-Apr-21	07-Jun-21	Chum	367	38	0.7	0	0	0	0	0	0	0	0	0	0	0	0	0	0	0	0	0	0	0	0	
3	3	27-Apr-21	07-Jun-21	Chum	368	40	0.8	0	0	0	0	0	0	0	0	0	0	0	0	0	0	0	0	0	0	0	0	
4	3	27-Apr-21	07-Jun-21	Chum	265	40	0.8	0	0	0	0	0	0	0	0	0	0	0	0	0	0	0	0	0	0	0	0	
4	3	27-Apr-21	07-Jun-21	Chum	266	39	0.7	0	0	0	0	0	0	0	0	0	0	0	0	0	0	0	0	0	0	0	0	
4	3	27-Apr-21	07-Jun-21	Chum	267	41	0.8	0	0	0	0	0	0	0	0	0	0	0	0	0	0	0	0	0	0	0	0	
4	3	27-Apr-21	07-Jun-21	Chum	268	42	0.8	0	0	0	0	0	0	0	0	0	0	0	0	0	0	0	0	0	0	0	0	
4	3	27-Apr-21	07-Jun-21	Chum	269	45	1.0	0	0	0	0	0	0	0	0	0	0	0	0	0	0	0	0	0	0	0	0	
4	3	27-Apr-21	07-Jun-21	Chum	270	39	0.7	0	0	0	0	0	0	0	0	0	0	0	0	0	0	0	0	0	0	0	0	
4	3	27-Apr-21	07-Jun-21	Chum	271	42	1.0	0	0	0	0	0	0	0	0	0	0	0	0	0	0	0	0	0	0	0	0	
4	3	27-Apr-21	07-Jun-21	Chum	272	42	0.8	0	0	0	0	0	0	0	0	0	0	0	0	0	0	0	0	0	0	0	0	
4	3	27-Apr-21	07-Jun-21	Chum	273	36	0.6	0	0	0	0	0	0	0	0	0	0	0	0	0	0	0	0	0	0	0	0	
4	3	27-Apr-21	07-Jun-21	Chum	274	39	0.8	0	0	0	0	0	0	0	0	0	0	0	0	0	0	0	0	0	0	0	0	
4	3	27-Apr-21	07-Jun-21	Chum	275	43	0.9	0	0	0	0	0	0	0	0	0	0	0	0	0	0	0	0	0	0	0	0	
4	3	27-Apr-21	07-Jun-21	Chum	276	37	0.6	1	0	0	0	0	0	0	0	0	0	0	0	0	0	0	0	0	0	0	1	
4	3	27-Apr-21	07-Jun-21	Chum	277	38	0.6	0	0	0	0	0	0	0	0	0	0	0	0	0	0	0	0	0	0	0	0	
4	3	27-Apr-21	07-Jun-21	Chum	278	43	0.8	0	0	0	0	0	0	0	0	0	0	0	0	0	0	0	0	0	0	0	0	
4	3	27-Apr-21	07-Jun-21	Chum	279	40	0.8	0	0	0	0	0	0	0	0	0	0	0	0	0	0	0	0	0	0	0	0	
4	3	27-Apr-21	07-Jun-21	Chum	280	40	0.8	0	0	0	0	0	0	0	0	0	0	0	0	0	0	0	0	0	0	0	0	

SITE	WEEK	DATE COLLECTED	DATE EXAMINED	FISH SPECIES	FISH NUMBER	LENGTH IN MM	WEIGHT IN G	LEP Co	LEP C1	LEP C2	LEP NM NOT ID	LEP PAM	LEP PAF	LEP AM	LEP AF	LEP MOT NOT ID	CAL Co	CAL C1	CAL C2	CAL C3	CAL C4	CAL NM NOT ID	CAL PAM	CAL PAF	CAL AM	CAL AF	CAL MOT NOT ID	TOT LICE ID
4	3	27-Apr-21	07-Jun-21	Chum	281	42	1.0	0	0	0	0	0	0	0	0	0	0	0	0	0	0	0	0	0	0	0	0	
4	3	27-Apr-21	07-Jun-21	Chum	282	46	1.2	0	0	0	0	0	0	0	0	0	0	0	0	0	0	0	0	0	0	0	0	
4	3	27-Apr-21	07-Jun-21	Chum	283	42	1.0	0	0	0	0	0	0	0	0	0	0	0	0	0	0	0	0	0	0	0	0	
4	3	27-Apr-21	07-Jun-21	Chum	284	45	1.1	0	0	0	0	0	0	0	0	0	0	0	0	0	0	0	0	0	0	0	0	
4	3	27-Apr-21	07-Jun-21	Chum	285	36	0.6	0	0	0	0	0	0	0	0	0	0	0	0	0	0	0	0	0	0	0	0	
4	3	27-Apr-21	07-Jun-21	Chum	286	48	1.5	0	0	0	0	0	0	0	0	0	0	0	0	0	0	0	0	0	0	0	0	
4	3	27-Apr-21	07-Jun-21	Chum	287	43	1.0	0	0	0	0	0	0	0	0	0	0	0	0	0	0	0	0	0	0	0	0	
4	3	27-Apr-21	07-Jun-21	Chum	288	39	0.8	0	0	0	0	0	0	0	0	0	0	0	0	0	0	0	0	0	0	0	0	
4	3	27-Apr-21	07-Jun-21	Chum	289	43	1.0	0	0	0	0	0	0	0	0	0	0	0	0	0	0	0	0	0	0	0	0	
4	3	27-Apr-21	07-Jun-21	Chum	290	37	0.6	0	0	0	0	0	0	0	0	0	0	0	0	0	0	0	0	0	0	0	0	
4	3	27-Apr-21	07-Jun-21	Chum	291	44	1.1	0	0	0	0	0	0	0	0	0	0	0	0	0	0	0	0	0	0	0	0	
4	3	27-Apr-21	07-Jun-21	Chum	292	39	0.8	0	0	0	0	0	0	0	0	0	0	0	0	0	0	0	0	0	0	0	0	
4	3	27-Apr-21	07-Jun-21	Chum	293	39	0.7	0	0	0	0	0	0	0	0	0	0	0	0	0	0	0	0	0	0	0	0	
4	3	27-Apr-21	07-Jun-21	Chum	294	41	0.9	0	0	0	0	0	0	0	0	0	0	0	0	0	0	0	0	0	0	0	0	
4	3	27-Apr-21	07-Jun-21	Chinook	312	49	1.7	0	0	0	0	0	0	0	0	0	0	0	0	0	0	0	0	0	0	0	0	
4	3	27-Apr-21	07-Jun-21	Chinook	313	45	1.5	0	0	0	0	0	0	0	0	0	0	0	0	0	0	0	0	0	0	0	0	
4	3	27-Apr-21	07-Jun-21	Chinook	314	40	0.9	0	0	0	0	0	0	0	0	0	0	0	0	0	0	0	0	0	0	0	0	
4	3	27-Apr-21	07-Jun-21	Chinook	315	46	1.6	0	0	0	0	0	0	0	0	0	0	0	0	0	0	0	0	0	0	0	0	
4	3	27-Apr-21	07-Jun-21	Chinook	316	39	1.0	0	0	0	0	0	0	0	0	0	0	0	0	0	0	0	0	0	0	0	0	
4	3	27-Apr-21	07-Jun-21	Chinook	317	42	1.0	0	0	0	0	0	0	0	0	0	0	0	0	0	0	0	0	0	0	0	0	
5	3	27-Apr-21	08-Jun-21	Chinook	500	47	1.5	0	0	0	0	0	0	0	0	0	0	0	0	0	0	0	0	0	0	0	0	
5	3	27-Apr-21	08-Jun-21	Coho	501	76	6.0	0	0	0	0	0	0	0	0	0	0	0	0	0	0	0	0	0	0	0	0	
5	3	27-Apr-21	08-Jun-21	Chum	502	38	0.7	0	0	0	0	0	0	0	0	0	0	0	0	0	0	0	0	0	0	0	0	
5	3	27-Apr-21	08-Jun-21	Chum	503	39	0.7	0	0	0	0	0	0	0	0	0	0	0	0	0	0	0	0	0	0	0	0	
5	3	27-Apr-21	08-Jun-21	Chum	504	37	0.6	0	0	0	0	0	0	0	0	0	0	0	0	0	0	0	0	0	0	0	0	
5	3	27-Apr-21	08-Jun-21	Chum	505	36	0.6	0	0	0	0	0	0	0	0	0	0	0	0	0	0	0	0	0	0	0	0	
5	3	27-Apr-21	08-Jun-21	Chum	506	36	0.6	0	0	0	0	0	0	0	0	0	0	0	0	0	0	0	0	0	0	0	0	
5	3	27-Apr-21	08-Jun-21	Chum	507	35	0.5	0	0	0	0	0	0	0	0	0	0	0	0	0	0	0	0	0	0	0	0	
5	3	27-Apr-21	08-Jun-21	Chum	508	40	0.9	0	0	0	0	0	0	0	0	0	0	0	0	0	0	0	0	0	0	0	0	
5	3	27-Apr-21	08-Jun-21	Chum	509	38	0.7	0	0	0	0	0	0	0	0	0	0	0	0	0	0	0	0	0	0	0	0	
5	3	27-Apr-21	08-Jun-21	Chum	510	37	0.6	0	0	0	0	0	0	0	0	0	0	0	0	0	0	0	0	0	0	0	0	
5	3	27-Apr-21	08-Jun-21	Chum	511	39	0.7	0	0	0	0	0	0	0	0	0	0	0	0	0	0	0	0	0	0	0	0	
5	3	27-Apr-21	08-Jun-21	Chum	512	36	0.6	0	0	0	0	0	0	0	0	0	0	0	0	0	0	0	0	0	0	0	0	
5	3	27-Apr-21	08-Jun-21	Chum	513	37	0.6	0	0	0	0	0	0	0	0	0	0	0	0	0	0	0	0	0	0	0	0	
5	3	27-Apr-21	08-Jun-21	Chum	514	43	1.0	0	0	0	0	0	0	0	0	0	0	0	0	0	0	0	0	0	0	0	0	
5	3	27-Apr-21	08-Jun-21	Chum	515	43	1.0	0	0	0	0	0	0	0	0	0	0	0	0	0	0	0	0	0	0	0	0	
5	3	27-Apr-21	08-Jun-21	Chum	516	39	0.8	0	0	0	0	0	0	0	0	0	0	0	0	0	0	0	0	0	0	0	0	
5	3	27-Apr-21	08-Jun-21	Chum	517	41	0.9	0	0	0	0	0	0	0	0	0	0	0	0	0	0	0	0	0	0	0	0	
5	3	27-Apr-21	08-Jun-21	Chum	518	44	1.0	0	0	0	0	0	0	0	0	0	0	0	0	0	0	0	0	0	0	0	0	
5	3	27-Apr-21	08-Jun-21	Chum	519	37	0.6	0	0	0	0	0	0	0	0	0	0	0	0	0	0	0	0	0	0	0	0	
5	3	27-Apr-21	08-Jun-21	Chum	520	35	0.5	0	0	0	0	0	0	0	0	0	0	0	0	0	0	0	0	0	0	0	0	
5	3	27-Apr-21	08-Jun-21	Chum	521	39	0.8	0	0	0	0	0	0	0	0	0	0	0	0	0	0	0	0	0	0	0	0	

SITE	WEEK	DATE COLLECTED	DATE EXAMINED	FISH SPECIES	FISH NUMBER	LENGTH IN MM	WEIGHT IN G	LEP Co	LEP C1	LEP C2	LEP NM NOT ID	LEP PAM	LEP PAF	LEP AM	LEP AF	LEP MOT NOT ID	CAL Co	CAL C1	CAL C2	CAL C3	CAL C4	CAL NM NOT ID	CAL PAM	CAL PAF	CAL AM	CAL AF	CAL MOT NOT ID	TOT LICE ID
5	3	27-Apr-21	08-Jun-21	Chum	522	39	0.7	0	0	0	0	0	0	0	0	0	0	0	0	0	0	0	0	0	0	0	0	
5	3	27-Apr-21	08-Jun-21	Chum	523	41	0.9	0	0	0	0	0	0	0	0	0	0	0	0	0	0	0	0	0	0	0	0	
5	3	27-Apr-21	08-Jun-21	Chum	524	38	0.7	0	0	0	0	0	0	0	0	0	0	0	0	0	0	0	0	0	0	0	0	
5	3	27-Apr-21	08-Jun-21	Chum	525	37	0.7	0	0	0	0	0	0	0	0	0	0	0	0	0	0	0	0	0	0	0	0	
5	3	27-Apr-21	08-Jun-21	Chum	526	38	0.7	0	0	0	0	0	0	0	0	0	0	0	0	0	0	0	0	0	0	0	0	
5	3	27-Apr-21	08-Jun-21	Chum	527	37	0.7	0	0	0	0	0	0	0	0	0	0	0	0	0	0	0	0	0	0	0	0	
5	3	27-Apr-21	08-Jun-21	Chum	528	38	0.7	0	0	0	0	0	0	0	0	0	0	0	0	0	0	0	0	0	0	0	0	
5	3	27-Apr-21	08-Jun-21	Chum	529	38	0.7	0	0	0	0	0	0	0	0	0	0	0	0	0	0	0	0	0	0	0	0	
5	3	27-Apr-21	08-Jun-21	Chum	530	38	0.7	0	0	0	0	0	0	0	0	0	0	0	0	0	0	0	0	0	0	0	0	
5	3	27-Apr-21	08-Jun-21	Chum	531	35	0.5	0	0	0	0	0	0	0	0	0	0	0	0	0	0	0	0	0	0	0	0	
7	3	27-Apr-21	07-Jun-21	Chum	322	38	0.5	0	0	0	0	0	0	0	0	0	0	0	0	0	0	0	0	0	0	0	0	
7	3	27-Apr-21	07-Jun-21	Chum	323	43	0.9	0	0	0	0	0	0	0	0	0	0	0	0	0	0	0	0	0	0	0	0	
7	3	27-Apr-21	07-Jun-21	Chum	324	38	0.6	0	0	0	0	0	0	0	0	0	0	0	0	0	0	0	0	0	0	0	0	
7	3	27-Apr-21	07-Jun-21	Chum	325	40	0.7	0	0	0	0	0	0	0	0	0	0	0	0	0	0	0	0	0	0	0	0	
7	3	27-Apr-21	07-Jun-21	Chum	326	40	0.9	0	0	0	0	0	0	0	0	0	0	0	0	0	0	0	0	0	0	0	0	
7	3	27-Apr-21	07-Jun-21	Chum	327	40	0.7	0	0	0	0	0	0	0	0	0	0	0	0	0	0	0	0	0	0	0	0	
7	3	27-Apr-21	07-Jun-21	Chum	328	44	0.9	0	0	0	0	0	0	0	0	0	0	0	0	0	0	0	0	0	0	0	0	
7	3	27-Apr-21	07-Jun-21	Chum	329	41	0.7	0	0	0	0	0	0	0	0	0	0	0	0	0	0	0	0	0	0	0	0	
7	3	27-Apr-21	07-Jun-21	Chum	330	40	0.7	0	0	0	0	0	0	0	0	0	0	0	0	0	0	0	0	0	0	0	0	
7	3	27-Apr-21	07-Jun-21	Chum	331	39	0.5	0	0	0	0	0	0	0	0	0	0	0	0	0	0	0	0	0	0	0	0	
7	3	27-Apr-21	07-Jun-21	Chum	332	40	0.7	0	0	0	0	0	0	0	0	0	0	0	0	0	0	0	0	0	0	0	0	
7	3	27-Apr-21	07-Jun-21	Chum	333	44	1.0	0	0	0	0	0	0	0	0	0	0	0	0	0	0	0	0	0	0	0	0	
7	3	27-Apr-21	07-Jun-21	Chum	334	43	0.8	0	0	0	0	0	0	0	0	0	0	0	0	0	0	0	0	0	0	0	0	
7	3	27-Apr-21	07-Jun-21	Chum	335	41	0.7	0	0	0	0	0	0	0	0	0	0	0	0	0	0	0	0	0	0	0	0	
7	3	27-Apr-21	07-Jun-21	Chum	336	43	0.9	0	2	0	0	0	0	0	0	0	0	0	0	0	0	0	0	0	0	0	2	
7	3	27-Apr-21	07-Jun-21	Chum	337	38	0.6	0	0	0	0	0	0	0	0	0	0	0	0	0	0	0	0	0	0	0	0	
7	3	27-Apr-21	07-Jun-21	Chum	338	40	0.6	0	0	0	0	0	0	0	0	0	0	0	0	0	0	0	0	0	0	0	0	
7	3	27-Apr-21	07-Jun-21	Chum	339	41	0.7	0	0	0	0	0	0	0	0	0	0	0	0	0	0	0	0	0	0	0	0	
7	3	27-Apr-21	07-Jun-21	Chum	340	42	0.7	0	0	0	0	0	0	0	0	0	0	0	0	0	0	0	0	0	0	0	0	
7	3	27-Apr-21	07-Jun-21	Chum	341	37	0.7	0	0	0	0	0	0	0	0	0	0	0	0	0	0	0	0	0	0	0	0	
7	3	27-Apr-21	07-Jun-21	Chum	342	42	0.8	0	0	0	0	0	0	0	0	0	0	0	0	0	0	0	0	0	0	0	0	
7	3	27-Apr-21	07-Jun-21	Chum	343	40	0.7	0	1	0	0	0	0	0	0	0	0	0	0	0	0	0	0	0	0	0	1	
7	3	27-Apr-21	07-Jun-21	Chum	344	44	0.9	0	0	0	0	0	0	0	0	0	0	0	0	0	0	0	0	0	0	0	0	
7	3	27-Apr-21	07-Jun-21	Chum	345	38	0.6	0	0	0	0	0	0	0	0	0	0	0	0	0	0	0	0	0	0	0	0	
8	3	27-Apr-21	09-Jun-21	Chinook	653	51	1.8	0	0	0	0	0	0	0	0	0	0	0	0	0	0	0	0	0	0	0	0	
8	3	27-Apr-21	09-Jun-21	Chum	654	40	0.8	0	0	0	0	0	0	0	0	0	0	0	0	0	0	0	0	0	0	0	0	
8	3	27-Apr-21	09-Jun-21	Chum	655	39	0.7	0	0	0	0	0	0	0	0	0	0	0	0	0	0	0	0	0	0	0	0	
8	3	27-Apr-21	09-Jun-21	Chum	656	41	0.8	0	0	0	0	0	0	0	0	0	0	0	0	0	0	0	0	0	0	0	0	
8	3	27-Apr-21	09-Jun-21	Chum	657	42	0.9	0	0	0	0	0	0	0	0	0	0	0	0	0	0	0	0	0	0	0	0	
8	3	27-Apr-21	09-Jun-21	Chum	658	48	1.2	0	0	0	0	0	0	0	0	0	0	0	0	0	0	0	0	0	0	0	0	
8	3	27-Apr-21	09-Jun-21	Chum	659	39	0.8	0	0	0	0	0	0	0	0	0	0	0	0	0	0	0	0	0	0	0	0	
8	3	27-Apr-21	09-Jun-21	Chum	660	36	0.6	0	0	0	0	0	0	0	0	0	0	0	0	0	0	0	0	0	0	0	0	

SITE	WEEK	DATE COLLECTED	DATE EXAMINED	FISH SPECIES	FISH NUMBER	LENGTH IN MM	WEIGHT IN G	LEP Co	LEP C1	LEP C2	LEP NM NOT ID	LEP PAM	LEP PAF	LEP AM	LEP AF	LEP MOT NOT ID	CAL Co	CAL C1	CAL C2	CAL C3	CAL C4	CAL NM NOT ID	CAL PAM	CAL PAF	CAL AM	CAL AF	CAL MOT NOT ID	TOT LICE ID
8	3	27-Apr-21	09-Jun-21	Chum	661	39	0.7	0	0	0	0	0	0	0	0	0	0	0	0	0	0	0	0	0	0	0	0	
8	3	27-Apr-21	09-Jun-21	Chum	662	36	0.6	0	0	0	0	0	0	0	0	0	0	0	0	0	0	0	0	0	0	0	0	
8	3	27-Apr-21	09-Jun-21	Chum	663	38	0.7	0	0	0	0	0	0	0	0	0	0	0	0	0	0	0	0	0	0	0	0	
8	3	27-Apr-21	09-Jun-21	Chum	664	41	0.9	0	0	0	0	0	0	0	0	0	0	0	0	0	0	0	0	0	0	0	0	
8	3	27-Apr-21	09-Jun-21	Chum	665	38	0.8	0	0	0	0	0	0	0	0	0	0	0	0	0	0	0	0	0	0	0	0	
8	3	27-Apr-21	09-Jun-21	Chum	666	40	0.8	0	0	0	0	0	0	0	0	0	0	0	0	0	0	0	0	0	0	0	0	
8	3	27-Apr-21	09-Jun-21	Chum	667	39	0.8	0	0	0	0	0	0	0	0	0	0	0	0	0	0	0	0	0	0	0	0	
8	3	27-Apr-21	09-Jun-21	Chum	668	46	1.1	0	0	0	0	0	0	0	0	0	0	0	0	0	0	0	0	0	0	0	0	
8	3	27-Apr-21	09-Jun-21	Chum	669	44	1.0	0	0	0	0	0	0	0	0	0	0	0	0	0	0	0	0	0	0	0	0	
8	3	27-Apr-21	09-Jun-21	Chum	670	43	1.0	0	0	0	0	0	0	0	0	0	0	0	0	0	0	0	0	0	0	0	0	
8	3	27-Apr-21	09-Jun-21	Chum	671	36	0.6	0	0	0	0	0	0	0	0	0	0	0	0	0	0	0	0	0	0	0	0	
8	3	27-Apr-21	09-Jun-21	Chum	672	41	0.9	0	0	0	0	0	0	0	0	0	0	0	0	0	0	0	0	0	0	0	0	
8	3	27-Apr-21	09-Jun-21	Chum	673	38	0.8	0	0	0	0	0	0	0	0	0	0	0	0	0	0	0	0	0	0	0	0	
8	3	27-Apr-21	09-Jun-21	Chum	674	40	0.8	0	0	0	0	0	0	0	0	0	0	0	0	0	0	0	0	0	0	0	0	
8	3	27-Apr-21	09-Jun-21	Chum	675	40	0.8	0	0	0	0	0	0	0	0	0	0	0	0	0	0	0	0	0	0	0	0	
9	3	27-Apr-21	08-Jun-21	Chinook	484	46	1.5	0	0	0	0	0	0	0	0	0	0	0	0	0	0	0	0	0	0	0	0	
9	3	27-Apr-21	08-Jun-21	Chum	485	45	1.1	0	0	0	0	0	0	0	0	0	0	0	0	0	0	0	0	0	0	0	0	
9	3	27-Apr-21	08-Jun-21	Chum	486	43	0.9	0	0	0	0	0	0	0	0	0	0	0	0	0	0	0	0	0	0	0	0	
9	3	27-Apr-21	08-Jun-21	Chum	487	48	1.4	0	0	0	0	0	0	0	0	0	0	0	0	0	0	0	0	0	0	0	0	
9	3	27-Apr-21	08-Jun-21	Chum	488	40	0.8	0	0	0	0	0	0	0	0	0	0	0	0	0	0	0	0	0	0	0	0	
9	3	27-Apr-21	08-Jun-21	Chum	489	40	0.8	0	0	0	0	0	0	0	0	0	0	0	0	0	0	0	0	0	0	0	0	
9	3	27-Apr-21	08-Jun-21	Chum	490	39	0.7	0	0	0	0	0	0	0	0	0	0	0	0	0	0	0	0	0	0	0	0	
9	3	27-Apr-21	08-Jun-21	Chum	491	45	1.1	0	0	0	0	0	0	0	0	0	0	0	0	0	0	0	0	0	0	0	0	
9	3	27-Apr-21	08-Jun-21	Chum	492	39	0.8	0	0	0	0	0	0	0	0	0	0	0	0	0	0	0	0	0	0	0	0	
9	3	27-Apr-21	08-Jun-21	Chum	493	40	0.8	0	0	0	0	0	0	0	0	0	0	0	0	0	0	0	0	0	0	0	0	
9	3	27-Apr-21	08-Jun-21	Chum	494	38	0.7	0	0	0	0	0	0	0	0	0	0	0	0	0	0	0	0	0	0	0	0	
9	3	27-Apr-21	08-Jun-21	Chum	495	40	0.8	0	0	0	0	0	0	0	0	0	0	0	0	0	0	0	0	0	0	0	0	
9	3	27-Apr-21	08-Jun-21	Chum	496	40	0.8	0	0	0	0	0	0	0	0	0	0	0	0	0	0	0	0	0	0	0	0	
9	3	27-Apr-21	08-Jun-21	Chum	497	40	0.8	0	0	0	0	0	0	0	0	0	0	0	0	0	0	0	0	0	0	0	0	
9	3	27-Apr-21	08-Jun-21	Chum	498	41	0.9	0	0	0	0	0	0	0	0	0	0	0	0	0	0	0	0	0	0	0	0	
9	3	27-Apr-21	08-Jun-21	Chum	499	38	0.7	0	0	0	0	0	0	0	0	0	0	0	0	0	0	0	0	0	0	0	0	
1	4	11-May-21	07-Jun-21	Chinook	346	46	1.2	0	0	0	0	0	0	0	0	0	0	0	0	0	0	0	0	0	0	0	0	
1	4	11-May-21	07-Jun-21	Chum	347	47	1.1	0	0	0	0	0	0	0	0	0	0	0	0	0	0	0	0	0	0	0	0	
1	4	11-May-21	07-Jun-21	Chum	348	51	1.5	0	0	0	0	0	0	0	0	0	0	0	0	0	0	0	0	0	0	0	0	
1	4	11-May-21	07-Jun-21	Chum	349	47	1.1	0	0	0	0	0	0	0	0	0	0	0	0	0	0	0	0	0	0	0	0	
1	4	11-May-21	07-Jun-21	Chum	350	41	0.8	0	0	0	0	0	0	0	0	0	0	0	0	0	0	0	0	0	0	0	0	
1	4	11-May-21	07-Jun-21	Chum	351	61	2.8	0	0	0	0	0	0	0	0	0	0	0	0	0	0	0	0	0	0	0	0	
1	4	11-May-21	07-Jun-21	Chum	352	50	1.4	0	0	0	0	0	0	0	0	0	0	0	0	0	0	0	0	0	0	0	0	
1	4	11-May-21	07-Jun-21	Chum	353	56	2.3	0	0	0	0	0	0	0	0	0	0	0	0	0	0	0	0	0	0	0	0	
2	4	11-May-21	07-Jun-21	Coho	354	80	6.3	0	0	0	0	0	0	0	0	0	0	0	0	0	0	0	0	0	0	0	0	
2	4	11-May-21	07-Jun-21	Coho	355	82	7.5	0	0	0	0	0	0	0	0	0	0	0	0	0	0	0	0	0	0	0	0	
2	4	11-May-21	07-Jun-21	Coho	356	82	8.7	0	0	0	0	0	0	0	0	0	0	0	0	0	0	0	0	0	0	0	0	

SITE	WEEK	DATE COLLECTED	DATE EXAMINED	FISH SPECIES	FISH NUMBER	LENGTH IN MM	WEIGHT IN G	LEP Co	LEP C1	LEP C2	LEP NM NOT ID	LEP PAM	LEP PAF	LEP AM	LEP AF	LEP MOT NOT ID	CAL Co	CAL C1	CAL C2	CAL C3	CAL C4	CAL NM NOT ID	CAL PAM	CAL PAF	CAL AM	CAL AF	CAL MOT NOT ID	TOT LICE ID
2	4	11-May-21	07-Jun-21	Coho	357	89	9.4	0	0	0	0	0	0	0	0	0	0	0	0	0	0	0	0	0	0	0	0	0
4	4	11-May-21	07-Jun-21	Stickleback	319	68	4.1	0	0	0	0	0	0	0	0	0	0	0	0	0	0	0	0	0	0	0	0	0
4	4	11-May-21	07-Jun-21	Stickleback	320	62	3.5	0	0	0	0	0	0	0	0	0	0	0	0	0	0	0	0	0	0	0	0	0
4	4	11-May-21	07-Jun-21	Stickleback	321	68	4.2	0	0	0	0	0	0	0	0	0	0	0	0	0	0	0	0	0	0	0	0	0
4	4	11-May-21	09-Jun-21	Chum	543	56	1.8	0	0	0	0	0	0	0	0	0	0	0	0	0	0	0	0	0	0	0	0	0
4	4	11-May-21	09-Jun-21	Chum	544	51	1.5	0	0	0	0	0	0	0	0	0	0	0	0	0	0	0	0	0	0	0	0	0
4	4	11-May-21	09-Jun-21	Chum	545	51	1.6	0	0	0	0	0	0	0	0	0	0	0	0	0	0	0	0	0	0	0	0	0
4	4	11-May-21	09-Jun-21	Chum	546	44	1.2	0	0	0	0	0	0	0	0	0	0	0	0	0	0	0	0	0	0	0	0	0
4	4	11-May-21	09-Jun-21	Chinook	547	48	1.7	0	0	0	0	0	0	0	0	0	0	0	0	0	0	0	0	0	0	0	0	0
4	4	11-May-21	09-Jun-21	Chinook	548	62	3.8	0	0	0	0	0	0	0	0	0	0	0	0	0	0	0	0	0	0	0	0	0
4	4	11-May-21	09-Jun-21	Chinook	549	51	2.2	0	0	0	0	0	0	0	0	0	0	0	0	0	0	0	0	0	0	0	0	0
4	4	11-May-21	09-Jun-21	Chinook	550	64	4.7	0	0	0	0	0	0	0	0	0	0	0	0	0	0	0	0	0	0	0	0	0
4	4	11-May-21	09-Jun-21	Chinook	551	60	2.9	0	0	0	0	0	0	0	0	0	0	0	0	0	0	0	0	0	0	0	0	0
4	4	11-May-21	09-Jun-21	Chinook	552	55	2.7	0	0	0	0	0	0	0	0	0	0	0	0	0	0	0	0	0	0	0	0	0
4	4	11-May-21	09-Jun-21	Chinook	553	67	4.6	0	0	0	0	0	0	0	0	0	0	0	0	0	0	0	0	0	0	0	0	0
5	4	11-May-21	08-Jun-21	Chum	450	44	1.1	0	0	0	0	0	0	0	0	0	0	0	0	0	0	0	0	0	0	0	0	0
5	4	11-May-21	08-Jun-21	Coho	451	76	5.4	0	0	0	0	0	0	0	0	0	0	0	0	0	0	0	0	0	0	0	0	0
5	4	11-May-21	08-Jun-21	Coho	452	97	11.6	0	0	0	0	0	0	0	0	0	0	0	0	0	0	0	0	0	0	0	0	0
7	4	11-May-21	08-Jun-21	Chum	533	45	1.2	0	0	0	0	0	0	0	0	0	0	0	0	0	0	0	0	0	0	0	0	0
7	4	11-May-21	08-Jun-21	Chum	534	50	1.5	0	0	0	0	0	0	0	0	0	0	0	0	0	0	0	0	0	0	0	0	0
7	4	11-May-21	08-Jun-21	Chum	535	45	1.2	0	0	0	0	0	0	0	0	0	0	0	0	0	0	0	0	0	0	0	0	0
7	4	11-May-21	08-Jun-21	Chum	536	47	1.4	0	0	0	0	0	0	0	0	0	0	0	0	0	0	0	0	0	0	0	0	0
7	4	11-May-21	08-Jun-21	Chum	537	38	0.7	0	0	0	0	0	0	0	0	0	0	0	0	0	0	0	0	0	0	0	0	0
8	4	11-May-21	08-Jun-21	Chum	538	49	1.4	0	0	0	0	0	0	0	0	0	0	0	0	0	0	0	0	0	0	0	0	0
8	4	11-May-21	08-Jun-21	Chum	539	39	0.8	0	0	0	0	0	0	0	0	0	0	0	0	0	0	0	0	0	0	0	0	0
8	4	11-May-21	08-Jun-21	Chum	540	46	1.3	0	0	0	0	0	0	0	0	0	0	0	0	0	0	0	0	0	0	0	0	0
8	4	11-May-21	08-Jun-21	Chum	541	42	1.0	0	0	0	0	0	0	0	0	0	0	0	0	0	0	0	0	0	0	0	0	0
8	4	11-May-21	08-Jun-21	Chum	542	45	1.3	0	0	0	0	0	0	0	0	0	0	0	0	0	0	0	0	0	0	0	0	0
1	5	28-May-21	07-Jun-21	Chum	295	56	1.8	0	0	0	0	0	0	0	0	0	0	0	0	0	0	0	0	0	0	0	0	0
1	5	28-May-21	07-Jun-21	Chum	296	64	2.4	0	0	0	0	0	0	0	0	0	0	0	0	0	0	0	0	0	0	0	0	0
1	5	28-May-21	07-Jun-21	Chum	297	61	2.4	0	0	0	0	0	0	0	0	0	0	0	0	0	0	0	0	0	0	0	0	0
1	5	28-May-21	07-Jun-21	Chum	298	73	3.6	0	0	0	0	0	0	0	0	0	0	0	0	0	0	0	0	0	0	0	0	0
1	5	28-May-21	07-Jun-21	Chum	299	65	3.0	0	0	0	0	0	0	0	0	0	0	0	0	0	0	0	0	0	0	0	0	0
1	5	28-May-21	07-Jun-21	Chum	300	69	3.3	0	0	0	0	0	0	0	0	0	0	0	0	0	0	0	0	0	0	0	0	0
1	5	28-May-21	07-Jun-21	Chinook	301	74	4.5	0	0	0	0	0	0	0	0	0	0	0	0	0	0	0	0	0	0	0	0	0
1	5	28-May-21	07-Jun-21	Chinook	302	54	2.1	0	0	0	0	0	0	0	0	0	0	0	0	0	0	0	0	0	0	0	0	0
1	5	28-May-21	07-Jun-21	Chinook	303	66	3.7	0	0	0	0	0	0	0	0	0	0	0	0	0	0	0	0	0	0	0	0	0
1	5	28-May-21	07-Jun-21	Chinook	304	62	3.0	0	0	0	0	0	0	0	0	0	0	0	0	0	0	0	0	0	0	0	0	0
1	5	28-May-21	07-Jun-21	Chinook	305	54	2.2	0	0	0	0	0	0	0	0	0	0	0	0	0	0	0	0	0	0	0	0	0
1	5	28-May-21	07-Jun-21	Chinook	306	74	5.3	0	0	0	0	0	0	0	0	0	0	0	0	0	0	0	0	0	0	0	0	0
1	5	28-May-21	07-Jun-21	Chinook	307	58	2.9	0	0	0	0	0	0	0	0	0	0	0	0	0	0	0	0	0	0	0	0	0
1	5	28-May-21	07-Jun-21	Chinook	308	59	2.8	0	0	0	0	0	0	0	0	0	0	0	0	0	0	0	0	0	0	0	0	0

SITE	WEEK	DATE COLLECTED	DATE EXAMINED	FISH SPECIES	FISH NUMBER	LENGTH IN MM	WEIGHT IN G	LEP Co	LEP C1	LEP C2	LEP NM NOT ID	LEP PAM	LEP PAF	LEP AM	LEP AF	LEP MOT NOT ID	CAL Co	CAL C1	CAL C2	CAL C3	CAL C4	CAL NM NOT ID	CAL PAM	CAL PAF	CAL AM	CAL AF	CAL MOT NOT ID	TOT LICE ID
1	5	28-May-21	07-Jun-21	Chinook	309	59	2.6	0	0	0	0	0	0	0	0	0	0	0	0	0	0	0	0	0	0	0	0	0
1	5	28-May-21	07-Jun-21	Chinook	310	64	3.5	0	0	0	0	0	0	0	0	0	0	0	0	0	0	0	0	0	0	0	0	0
1	5	28-May-21	07-Jun-21	Coho	311	75	5.6	0	0	0	0	0	0	0	0	0	0	0	0	0	0	0	0	0	0	0	0	0
2	5	28-May-21	07-Jun-21	Chinook	263	60	2.9	0	0	0	0	0	0	0	0	0	0	0	0	0	0	0	0	0	0	0	0	0
2	5	28-May-21	07-Jun-21	Coho	264	82	8.1	0	0	0	0	0	0	0	0	0	0	0	0	0	0	0	0	0	0	0	0	0
11	5	28-May-21	07-Jun-21	Chinook	318	49	1.8	0	0	0	0	0	0	0	0	0	0	0	0	0	0	0	0	0	0	0	0	0



#### Appendix IV – Historical Comparison (2004-2021)

A comparison of the historical results of analysis for sea lice infestation on chum salmon collected by beach seine in Nootka Sound, BC from 2004 to 2021.

Year	Sample size	Total # of fish infested	Total # of lice observed	Prevalence (%)	Abundance	Average Intensity
2004	1088	11	15	1.0	0.01	1.4
2005	1057	118	152	1.7	0.14	1.3
2006	1512	139	209	9.2	0.13	1.5
2007	2883	52	63	1.8	0.02	1.2
2008	2328	102	125	4.4	0.05	1.2
2009	2278	99	126	4.3	0.05	1.3
2010	1885	97	118	5.1	0.06	1.2
2011	1974	57	65	2.9	0.03	1.1
2012	1567	22	26	1.4	0.02	1.2
2013	1004	15	15	1.5	0.02	1.0
2014	705	3	3	0.4	0.004	1.0
2015	390	18	25	4.6	0.06	1.4
2016	547	62	73	11.3	0.13	1.2
2017	899	5	5	0.6	0.006	1.0
2018	409	50	128	12.2	0.31	2.6
2019	399	36	42	9.0	0.11	1.2
2020	200	95	311	47.5	1.56	3.3
2021	675	6	8	0.9	0.01	1.3
<b>Total</b>	<b>21800</b>	<b>987</b>	<b>1509</b>	<b>4.5</b>	<b>0.07</b>	<b>1.5</b>