

Wild Juvenile Salmonid Monitoring Program 2021

Jervis Inlet and Sechelt Inlet, BC

Report Date: June 27, 2021

Prepared For:

*Grieg Seafood BC Ltd.
106 – 1180 Ironwood Street
Campbell River, BC
V9W 5P7*



1310 Marwalk Cres
Campbell River, BC.
V9W 5X1
phone: (250) 287-2462
fax: (250) 287-2452
email: info@mainstreambio.ca
www.mainstreambio.ca



Summary

Beach seine sampling was conducted on behalf of Grieg Seafood in Jervis Inlet and Sechelt Inlet, BC in 2021. Sampling was completed to monitor sea lice abundance, prevalence and intensity on juvenile wild salmon in support of the Aquaculture Stewardship Certification process for Grieg Seafood's finfish aquaculture sites in the area. This report presents the data from the sixth year of beach seining and sea lice analysis conducted for wild juvenile salmonid monitoring in Jervis Inlet and Sechelt Inlet, BC by Grieg Seafood.

Sampling was conducted during four separate sampling events in March, April and May 2021, selected to coincide with the peak outmigration period of juvenile salmonids. Sampling was completed at 15 sites within Jervis Inlet and Sechelt Inlet, BC. The sites were selected based on their locations relative to existing aquaculture sites located in the area.

A total of 30 individuals from each target species captured, or all of the individuals present (if less than 30 were collected), were retained from each of the 15 sites during the sampling events. Total catch numbers of each species were recorded. Water quality measurements including temperature and salinity were recorded at each site during each sampling event.

Collected sample fish were frozen and analyzed in the lab for the presence of sea lice by Mainstream Biological Consulting. Sea lice observed on the individual fish specimens during laboratory analysis were initially identified as either *Lepeophtheirus spp.* or *Caligus sp.* These lice are assumed to be *L. salmonis* and *C. clemensi* due to the lack of documented infestation of Pacific salmon by other species. The lice were recorded by life stage and the sex of pre-adult or adult motile lice was determined.

This data summary report documents the observed sea lice infestation rate on retained samples collected in Jervis Inlet and Sechelt Inlet, BC in 2021. A total of 727 samples underwent lab analysis for sea lice infestation including 721 chum salmon (*Oncorhynchus keta*), four coho salmon (*Oncorhynchus kisutch*) and two threespine stickleback (*Gasterosteus aculeatus*). No chinook salmon, pink salmon, sockeye salmon or Atlantic salmon were captured during sampling completed in Jervis Inlet and Sechelt Inlet, BC in 2021. From the total sample population 49 individual samples were found to be infested with 56 sea lice. The calculated prevalence for the total sample population was 6.7 %, the sea lice abundance was 0.1 and the average intensity was 1.1 for the sample population collected in Jervis Inlet and Sechelt Inlet in 2021.

A total of 3438 chum salmon were captured, representing 99.8 % of all captured samples. Of the 3438 chum salmon captured, 721 were kept for lab analysis for sea lice infestation. A total of 44 chum smolts were found to be infested with 49 lice resulting in a calculated prevalence of 6.1 %, abundance of 0.1, and average intensity of 1.1 for the chum salmon sample population.

Four coho salmon were captured, representing 0.1 % of all captured salmon. Of the four coho salmon captured, four salmon were found to be infested with six lice resulting in a calculated prevalence of 100.0 %, abundance of 1.5, and average intensity of 1.5 for the coho salmon sample population.

A total of 50 *Lepeophtheirus salmonis* sea lice of various life stages were identified on 43 juvenile salmon (chum, coho) and 5 *Caligus clemensi* were identified on 5 collected

samples (Appendix III). There were no samples that were infested with both a *L. salmonis* and a *C. clemensi* sea louse (Appendix III).

A comparison of the prevalence, abundance and intensity of sea lice species found on chum and pink salmon was completed for sample data from 2016 to 2021 collected in Jervis Inlet and Sechelt Inlet, BC. This data is presented in summary tables in Appendix IV.

Table of Contents

Summary.....	ii
Table of Contents.....	iv
List of Figures	v
List of Tables.....	vi
1.0 Introduction.....	1
2.0 Methods.....	3
2.1 Site Locations	3
2.2 Field Procedures.....	6
2.3 Laboratory Procedures	7
2.4 Data Analysis.....	8
3.0 Results	10
3.1 Water Quality Parameters.....	10
3.2 Fish Sample Composition	11
3.3 Fish Sample Size Statistics.....	13
3.3.1 <i>Chum Salmon</i>	13
3.3.2 <i>Coho Salmon</i>	13
3.4 Sea Lice Infestation Rates	14
3.4.1 <i>Infestation Rates on Chum Salmon</i>	14
3.4.2 <i>Infestation Rates on Coho</i>	15
3.4.3 <i>Infestation Rates on Threespine Stickleback</i>	16
3.5 Infestation by Sea Lice Species	16
3.5.1 <i>Infestation by Life Stage on Chum Salmon</i>	16
3.5.2 <i>Infestation by Life Stage on Coho Salmon</i>	18
3.5.3 <i>Infestation by Life Stage on Threespine Stickleback</i>	18
4.0 Conclusions	19
5.0 References	20
Appendix I – Field Data	I
Appendix II – Capture and Collection Sample Totals	III
Appendix III – Sea Lice Analysis Data	V
Appendix IV – Historical Comparison (2016-2021).....	XXI

List of Figures

Figure 1:	An overview map showing the location of Jarvis Inlet and Sechelt Inlet on the mainland coast of BC.	2
Figure 2:	The approximate locations of the seven beach seine sites in Jarvis Inlet, BC sampled in 2021.	4
Figure 3:	The approximate locations of the eight beach seine sites in Sechelt Inlet, BC sampled in 2021.	5

List of Tables

Table 1:	The site number and location of the 15 beach seine sites where fish were collected for sea lice analysis in Jervis Inlet and Sechelt Inlet, BC in 2021....	3
Table 2:	Surface water quality parameters recorded at beach seine sites in Jervis Inlet and Sechelt Inlet in 2021.....	10
Table 3:	The total of collected individuals of each fish species captured in Jervis Inlet and Sechelt Inlet, BC between March 30, 2021 and May 13, 2021, and the percentage of the total capture population that they represent.	11
Table 4:	The number of captured fish (Capture Total) and the number of individual fish collected (Sample Total) from each of the 15 sample sites in Jervis Inlet and Sechelt Inlet, BC between March 30, 2021 and May 13, 2021.	12
Table 5:	Average weights and lengths of chum salmon collected in Jervis Inlet and Sechelt Inlet in 2021 summarized by sampling event.	13
Table 6:	Average weights and lengths of coho salmon collected in Jervis Inlet and Sechelt Inlet in 2021 summarized by sampling event.	13
Table 7:	Results of analysis for sea lice infestation on the sample population collected by beach seine in Jervis Inlet and Sechelt Inlet, BC in 2021.....	14
Table 8:	The number of sea lice found on chum salmon collected in Jervis Inlet and Sechelt Inlet, BC in 2021 summarized by the 15 sites where beach seining was conducted. Calculated sea lice prevalence and abundance is also included by site.	15
Table 9:	The number of sea lice in each life stage by species identified on the chum salmon sample population from Jervis Inlet and Sechelt Inlet in 2021. LEP = <i>Lepeophtheirus salmonis</i> , CAL = <i>Caligus clemensi</i>	16
Table 10:	The number and species of sea lice found on chum salmon collected in Jervis Inlet and Sechelt Inlet in 2021 summarized by week and by the sites where beach seining was conducted. LEP = <i>Lepeophtheirus salmonis</i> CAL = <i>Caligus clemensi</i>	17

1.0 Introduction

At the request of Grieg Seafood BC, beach seine sampling to capture wild juvenile salmon and threespine stickleback to be analyzed for sea lice infestation took place at 15 sites located in Jervis Inlet and Sechelt Inlet, BC (Figure 1). The sample collection occurred during four weeks between March 30, 2021 and May 13, 2021. These dates were selected to coincide with the estimated peak outmigration dates of juvenile salmonids.

Parasitic copepods from the family Caligidae (sea lice) found in the coastal waters of British Columbia are divided into two genera: *Lepeophtheirus* and *Caligus*. Eleven species of *Lepeophtheirus* have been identified infesting fish in the Pacific Ocean, while only one species of *Caligus* (*Caligus clemensi*) have been identified (Margolis and Arthur 1979; McDonald and Margolis, 1995). *Caligus clemensi* infect an extremely wide range of natural hosts in the marine environment including salmonids and non-salmonids; while *L. salmonis* natural hosts on the Pacific coast have been found to include Pacific salmon, threespine stickleback and Pacific herring. *Lepeophtheirus spp.* sea lice found on salmonid specimens were assumed to be *L. salmonis* due to the lack of documented infestations of Pacific salmon by other *Lepeophtheirus* lice species (Jones and Nemec, 2004).

Both of these genera have similar life histories and developmental stages (Kabata, 1972; Johnson and Albright, 1991a). The sea lice hatch from eggs and develop through two free-swimming naupilii stages before developing into an infectious free-swimming copepodid. At this point, the sea lice attach to their host and develop through a number of chalimus stages. The chalimus are “non-motile” and are attached to their host by a frontal filament. The final chalimus stage terminates as the sea lice become “motile” and are no longer attached to their hosts by the frontal filament. The sea lice can now move freely on the fish as they develop through a pre-adult stage before becoming reproductively viable adults.

Water temperature and salinity are two environmental variables that influence sea lice development, growth, survival and reproductive rate. In British Columbia, surface seawater temperatures range from approximately 6 °C to 13 °C. Research on sea lice abundance conducted in the Jervis Inlet and Sechelt Inlet and elsewhere on the coast of British Columbia indicates that surface water temperature during the winter months does not appear to hinder the season abundance of *L. salmonis* (Saksida et al. 2007a, b). The rate of development and the generation times for *C. elongates* are strongly temperature dependent (Tully 1992) and although this research has not been conducted, similar relationships with temperature are to be expected for *C. clemensi* (Jones and Johnson, 2015). Survival and development of *L. salmonis* is optimal in high salinity seawater. Under laboratory conditions copepodid survival was limited to conditions where salinity was greater than 10 ppt (Johnson and Albright, 1991b).

Grieg Seafood requested monitoring of sea lice abundance, prevalence and intensity on juvenile wild salmon within Jervis Inlet and Sechelt Inlet in support of the Aquaculture Stewardship Certification for their aquaculture sites within the area. This data summary report documents the observed sea lice infestation rates on retained juvenile salmonids collected in Jervis Inlet and Sechelt Inlet in 2021. This report presents the data from the sixth year of beach seining and sea lice analysis conducted for wild juvenile salmonid monitoring in Jervis Inlet and Sechelt Inlet, BC by Grieg Seafood.

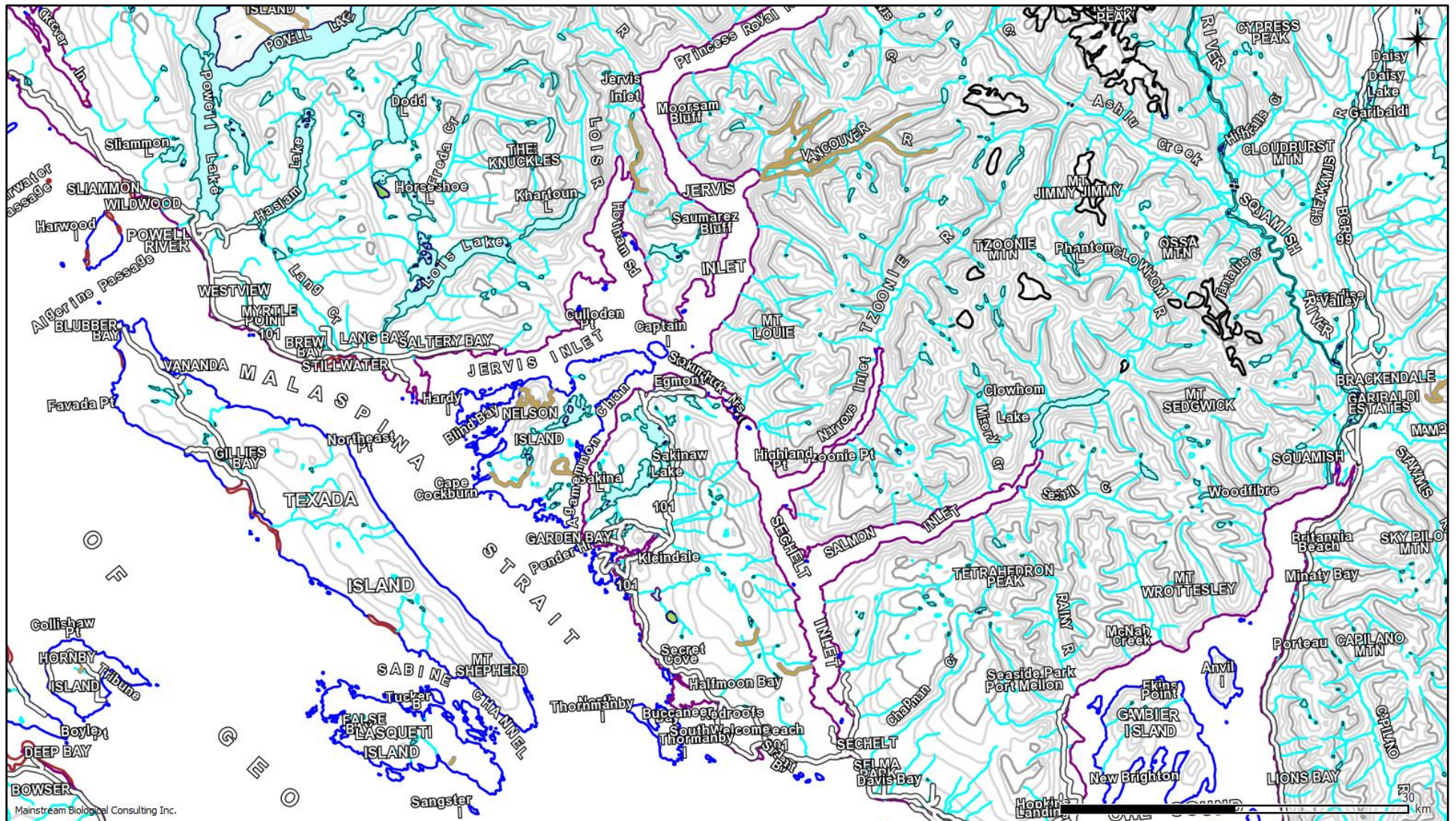


Figure 1: An overview map showing the location of Jervis Inlet and Sechelt Inlet on the mainland coast of BC.

2.0 Methods

The fish inspected for sea lice infestation were collected from 15 sites in Jervis Inlet and Sechelt Inlet, BC. These sites were chosen based on their locations relative to existing aquaculture sites in the area. Each site was sampled once each week during four sampling weeks in 2021 between March 30 and May 13.

2.1 Site Locations

The 15 sites at which beach seining was conducted to collect specimens for sea lice analysis consisted of seven sites within Jervis Inlet (Figure 2) and eight sites within Sechelt Inlet (Figure 3). GPS coordinates collected in the field for the sites are presented in Table 1.

Table 1: The site number and location of the 15 beach seine sites where fish were collected for sea lice analysis in Jervis Inlet and Sechelt Inlet, BC in 2021.

Site #	Latitude	Longitude
1	49 46.861	124 12.954
2	49 46.903	124 10.269
3	49 47.788	124 06.221
4	49 49.092	124 06.011
5	49 49.027	123 57.946
6	49 46.490	124 03.391
7	49 45.212	124 10.172
8	49 33.408	123 46.118
9	49 36.514	123 46.206
10	49 38.478	123 45.113
11	49 37.813	123 48.592
12	49 39.500	123 49.162
13	49 41.259	123 52.610
14	49 37.563	123 50.645
15	49 32.647	123 58.723

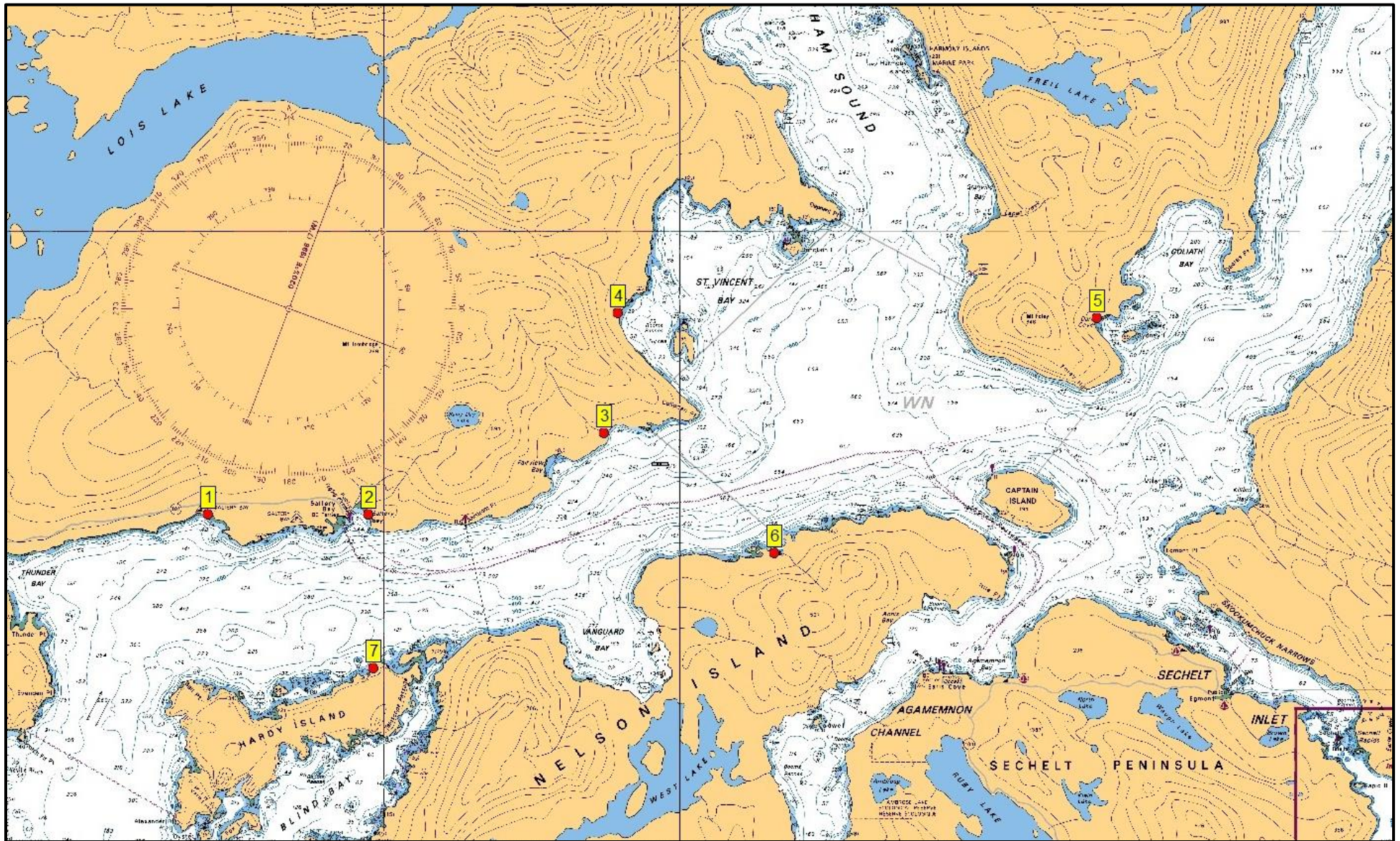


Figure 2: The approximate locations of the seven beach seine sites in Jervis Inlet, BC sampled in 2021.

2.2 Field Procedures

Procedures for beach seining, fish collection and field data recording adapted from procedures utilized by the Department of Fisheries and Oceans (DFO) were used for juvenile salmon sampling by Mainstream Biological Consulting staff during sampling in Jervis Inlet and Sechelt Inlet in 2021.

An 18ft Boston Whaler, powered by a 60 horsepower outboard motor, was used to access the beach seine sites. A 150 ft (45.7 m) long by 12 ft (3.7 m) deep beach seine net was used to capture specimens. The net was constructed in three 50 ft (15.2 m) sections. The centre bunt section consists of one-quarter inch diameter diamond mesh, while the two side panels (wings) consist of half-inch diameter diamond mesh. Floats were located every 30 cm along the top-line and a lead line weighted the bottom of the net.

A three person crew was utilized to conduct the beach seine sets and retrieve samples in a consistent manner at each of the 15 selected sites. All beaches were approached slowly by boat and one crewmember was put ashore with the towline from one end of the beach seine net. The onshore crewmember held the towline at one side of the sample site, while the second crewmember ensured the net deployed smoothly off the bow or side of the boat. The third crewmember, the boat operator, backed the boat in a wide semicircle towards the opposite side of the sample site and remained on the boat. When the net was fully deployed, the second crewmember stepped into the shallow water with the towline or tossed it to the awaiting crewmember on shore. A slow retrieval of the net began immediately.

As the net was slowly retrieved, the probe of a sample of surface water was collected to measure salinity and water temperature data using an Oakton® SALT 6+ meter.

The crewmembers retrieved the net evenly from opposite ends ensuring that the lead line remained as close to the bottom as possible. All retrieved netting was piled on the beach above the water level. As the retrieval reached the net bunt, the lead line was retrieved at a faster rate than the floats to allow the netting of the bunt to form a bag under the captured fish. The lead line was then pulled up onto the beach above the water level. One crewmember worked their way around the outside of the net in the shallow water to ensure the floats stayed above the surface of the water. In this manner a small, shallow bag formed from the bunt of the net held the captured fish in the water.

The three crewmembers participated in the collection of individual fish to ensure that captured fish remained in the net for as short a period of time as possible. The net was manipulated, if necessary, in response to rising or falling tides in order to ensure the captured fish remained in the net and were held in sufficient water to minimize stress. The level of sufficient water was dependant on the size and numbers of captured fish, but was generally thought of as enough water to minimize fish contact with the net or with other fish.

A total of 30 individuals from each target species captured, or all of the individuals present (if less than 30 were collected), were retained as samples for sea lice infestation analysis. Individual fish were “swam” into an appropriately sized whirlpac bag. All handling of fish was kept to a minimum.

When all the fish for retention were collected, a total catch number for each species was recorded. The fish remaining in the net were counted out of the seine net, or an

estimate of the remaining fish was made (estimates were used when it appeared that more than 500 individuals from any given species remained in the net). The total of fish remaining in the net was added to the number of retained individuals to calculate a total capture number for a given species.

A crewmember recorded all the information from each beach seine set in a standardized field form. The information recorded included the following:

- Site number (Site 1-15);
- Date;
- Time at the end of the individual fish collection;
- Comments on weather and oceanic conditions;
- Total capture and retained fish numbers for each specimen group; and
- Water temperature (°C) and salinity (ppt) to one decimal place.

The retained fish from each site were packaged separately in re-sealable bags and labelled with the site number (Site 1-15) and the week number (Week 1, 2, 3 or 4). Site sample bags were placed in a cooler with ice. The specimens were transferred to a portable freezer immediately upon return to shore.

The beach seine net was reloaded onto the bow of the boat. Crewmembers scanned the net for obvious holes, which were repaired immediately if found. The Oakton® SALT 6+ meter was shut off and stored, and all gear and coolers were reloaded into the boat.

The above procedures for beach seine net deployment and retrieval, as well as those described for fish collection, were repeated at all 15 sample sites.

2.3 Laboratory Procedures

The laboratory procedures for sea lice analysis have been adapted from the procedures demonstrated by Sheila Dawe and Eliah Kim at the Pacific Biological Station in Nanaimo, BC, during sea lice identification training that was conducted on April 1, 2004. Additional sea lice identification training by Paul Callow was conducted at the Pacific Biological Station in September 2007.

Fish samples were thawed immediately prior to analysis. Individual fish were identified to species and counted. The results of this identification and count were compared to the reported data found on the field data sheets.

A standardized data sheet was used to record sea lice analysis results from each site. The site and week number, sample date and number of fish and specimen groups present were recorded. The date of the analysis was also noted on the data sheet. Data from individual fish was recorded as the analysis proceeded.

Individual fish, when thawed, were removed from their bag, using a pair of forceps at the caudal peduncle, and placed in a petri dish. Each bag was labelled chronologically with an individual identification number (1 – 727). Each fish was then scanned for the presence of sea lice under a stereoscopic dissection microscope. The microscope was set at a magnification of 20X for the preliminary survey of each fish sample, but magnification was occasionally increased to 40X during individual sea lice identification.

Microscopic analysis of each individual fish began at the anterior end of the left side of the specimen. The head was examined first, after which a scan was made along the dorsal half of the specimen working towards the posterior end and the tail. The dorsal fin was lifted and expanded, as was the caudal fin, with a pair of forceps. From the

posterior end a return scan was made along the ventral half of the specimen back to the head. The anal fin, pelvic fin and pectoral fin were also lifted and expanded using a pair of forceps. The fish was then flipped using a pair of forceps at the caudal peduncle and the procedure was repeated on the right hand side of the specimen. Additional scans were made longitudinally down the fish if the entire depth of the fish could not be seen in a single pass. Any sea lice observed on the fish were removed and placed in a petri dish with saline solution.

Each individual bag was visually inspected after the removal of the fish for the presence of pre-adult or adult sea lice that may have become dislodged during handling. Any sea lice found in the sample bags were identified under the microscope using the same characteristics outlined above. These “loose” sea lice were recorded on the data sheet with the data for the corresponding specimen and it was assumed that the lice had come from that individual.

Sea lice were identified using characteristics outlined by Kabata (1972) and Johnson and Albright (1991a). Sea lice observed on individual fish were identified as either non-motile chalimus (including copepodid), or motile pre-adults and adults. Non-motile sea lice were identified as either of the two chalimus stages for *Lepeophtheirus salmonis* (Hamre et al., 2013) or four chalimus stages for *Caligus clemensi*. Motile lice, either pre-adults or adults, were identified as either *Lepeophtheirus salmonis* or *Caligus clemensi* and the sex of the louse was determined.

Chalimus were identified to species primarily by characteristics of the frontal filament. However, size, shape, genital development, and leg development were used as secondary identifying characteristics for speciation as well as primary indicators for life stage identification. Motile sea lice were identified to species by the presence or absence of lunules. If lunules were absent the louse was identified as *Lepeophtheirus spp.* The louse was identified as *Caligus spp.* if lunules were present.

Sea lice found on captured specimens were not identified to species, but have been assumed to be either *L. salmonis* or *C. clemensi* due to the lack of documented infestations of Pacific salmon by other species of sea lice (Jones and Nemec, 2004).

After microscopic analysis individual fish specimens were measured (fork length for salmonids) in millimetres and weighed (recorded to the nearest tenth of a gram). Lengths and weights were also recorded on the data sheet with the specimen’s corresponding sea lice analysis results. The fish were then returned to their respective individual bags and the fish from each site were repackaged in the large re-sealable bags. All samples were then refrozen.

In order to allow for quality assurance of sea lice identification, all sea lice were placed in labelled vials and preserved in 70% isopropyl alcohol. Ten percent of the deloused fish specimens were randomly selected by specimen number and retained. Both the preserved lice and retained deloused fish specimens will be kept at the office of Mainstream Biological Consulting in Campbell River for five years.

2.4 Data Analysis

Surface water quality data collected for temperature and salinity was summarized to report the minimum and maximum values as well as the calculated averages for each sample week.

Beach seine fish sample composition was summarized by species and site for each week. The recorded fork lengths and weights for only the chum salmon sample population were summarized to present minimum and maximum values as well as calculated averages. Sea lice infestation rates, including the number of infested fish and the number of sea lice identified, were determined for the chum salmon sample population. Prevalence, as defined as the number of host fish found to have one or more sea lice compared to the total number of host fish examined, while abundance, as defined as the total number of sea lice observed compared to the total number of host fish examined. The intensity of sea lice infestation, as described by the number of sea lice found on a single salmon was summarized. Average intensity was calculated by dividing the total number of sea lice identified by the number of infested fish.

Statistical analysis of the spatial and temporal distribution of sea lice was not conducted. Spatial and temporal analysis has been limited to the simple presentation and discussion of the number of sea lice found on fish specimens collected from each site during each of the sampling events.

3.0 Results

The following sections outline the results of beach seine collection and subsequent sea lice inspection of juvenile salmonids collected from Jervis Inlet and Sechelt Inlet, BC, in 2021. Water quality field data is presented in Appendix I, beach seine fish capture data is included in Appendix II and data with respect to the fish sample population including sea lice lab analysis results are located in Appendix III.

3.1 Water Quality Parameters

Surface measurements of water temperature and salinity taken during beach seining at each of the 15 sites during the four sample periods are presented in Table 2. The field data recorded at each site is included in Appendix I.

Recorded surface water temperatures ranged from a low of 5.5°C recorded at Site 9 on March 31, 2021, to a high of 16.9 °C recorded at Site 4 on April 28, and Site 7 on May 12, 2021 (Table 2; Appendix I). Calculated weekly average surface water temperatures increased from a low of 7.6 °C for March 30/31, 2021, up to a maximum weekly average of 15.0 °C for May 12/13, 2021.

Recorded surface water salinity ranged from a low of 7.3 ppt recorded at Site 3 on March 30, 2021, to a high of 29.5 ppt recorded at Site 7 on April 14, 2021 (Table 2; Appendix I).

Table 2: Surface water quality parameters recorded at beach seine sites in Jervis Inlet and Sechelt Inlet in 2021.

Site	March 30/31, 2021		April 14/15, 2021		April 28/29, 2021		May 12/13, 2021	
	Temp. (°C)	Salinity (ppt)	Temp. (°C)	Salinity (ppt)	Temp. (°C)	Salinity (ppt)	Temp. (°C)	Salinity (ppt)
1	6.6	23.4	8.6	27.8	13.5	26.3	15.2	24.1
2	7.0	25.8	8.8	29.1	13.0	27.9	15.7	16.1
3	7.6	7.3	10.5	29.1	15.4	16.4	16.5	27.0
4	7.3	18.6	13.1	20.5	16.9	23.9	15.8	21.1
5	10.8	28.8	11.5	25.2	15.5	24.9	16.6	26.3
6	7.8	25.4	10.2	29.2	13.5	27.8	16.0	26.6
7	7.9	26.4	9.4	29.5	13.2	27.8	16.9	26.9
8	7.7	18.8	10.2	28.7	13.2	24.5	14.1	23.2
9	5.5	22.7	9.9	28.7	12.9	21.0	13.7	20.5
10	6.9	21.2	10.1	25.6	13.5	17.9	13.9	13.5
11	7.1	24.8	10.5	27.9	13.8	20.0	14.0	20.9
12	5.8	27.8	10.3	28.0	12.8	16.6	13.4	23.7
13	7.5	28.5	10.1	25.2	13.0	20.3	13.5	20.7
14	8.8	23.2	11.0	25.0	13.4	15.8	14.2	15.4
15	9.7	20.1	12.2	27.8	14.5	10.8	16.0	20.9
Average	7.6	22.9	10.4	27.2	13.9	21.5	15.0	21.8

3.2 Fish Sample Composition

A total of 3444 fish were captured during beach seine sampling conducted in Jervis Inlet and Sechelt Inlet in 2021 (Table 3). A summary of the total number of fish captured and collected as specimens at each site over the collection period can be found in Table 4. Totals of fish captured and collected specimens at each site over the entire collection period can be found in Appendix II. Of the 3444 fish captured, 3438 chum salmon, four coho salmon, and two stickleback were retained and underwent lab analysis. The total collected fish from each species and the percentage that it represents of the total beach seine capture population is presented in Table 3. No chinook salmon, sockeye salmon, pink salmon or Atlantic salmon were captured during sampling completed in Jervis Inlet and Sechelt Inlet in 2021.

Chum salmon were the most common species and were captured in greater numbers than any other species during sampling in Jervis Inlet and Sechelt Inlet in 2021. Captured chum salmon accounted for 99.8 % of all captured fish.

Table 3: The total of collected individuals of each fish species captured in Jervis Inlet and Sechelt Inlet, BC between March 30, 2021 and May 13, 2021, and the percentage of the total capture population that they represent.

Common Name	Capture Totals (% of total capture population)	Collection Totals	Collection %
Chum salmon	3438 (99.8%)	721	21.0
Coho salmon	4 (0.1 %)	4	100.0
Threespine Stickleback	2 (0.06%)	2	100.0
All Species	3444	727	21.1

Table 4: The number of captured fish (Capture Total) and the number of individual fish collected (Sample Total) from each of the 15 sample sites in Jervis Inlet and Sechelt Inlet, BC between March 30, 2021 and May 13, 2021.

Site	Chum		Coho		Stickleback		Capture Total	Sample Total
	Capture Total	Sample Total	Capture Total	Sample Total	Capture Total	Sample Total		
1	11	11	0	0	0	0	11	11
2	36	35	1	1	0	0	37	36
3	132	60	0	0	0	0	132	60
4	539	45	0	0	0	0	539	45
5	1884	125	0	0	1	1	1885	126
6	140	91	3	3	0	0	143	94
7	68	53	0	0	0	0	68	53
8	150	96	0	0	0	0	150	96
9	5	5	0	0	0	0	5	5
10	0	0	0	0	0	0	0	0
11	59	40	0	0	0	0	59	40
12	78	36	0	0	0	0	78	36
13	210	63	0	0	0	0	210	63
14	118	53	0	0	1	1	119	54
15	8	8	0	0	0	0	8	8
Totals	3438	721	4	4	2	2	3444	727

3.3 Fish Sample Size Statistics

Summary statistics for weight and fork length were calculated for the sample population of juvenile salmonids. Length and weight data were summarized by sampling event for each species. Length and weight data for the two retained threespine stickleback is not presented but can be found in Appendix III.

3.3.1 Chum Salmon

The weights of 721 chum smolts collected during the four sampling events ranged from 0.3 g to 4.0 g and averaged 0.6 g (SD = 0.3). The fork length of the chum smolts ranged from 29 mm to 63 mm and averaged 37 mm (SD = 4). Chum salmon weight and length data was summarized by sampling week (Table 5).

Table 5: Average weights and lengths of chum salmon collected in Jervis Inlet and Sechelt Inlet in 2021 summarized by sampling event.

Parameter	Chum Salmon			
	March 30/31, 2021	April 14/15, 2021	April 28/29, 2021	May 12/13, 2021
	(n=169)	(n=242)	(n=159)	(n=151)
Weight (g)	0.6	0.5	0.7	0.7
Length (mm)	37	36	38	37

3.3.2 Coho Salmon

Analysis of weight and fork length data was completed for the coho salmon sample population collected in Jervis Inlet and Sechelt Inlet in 2021. The weights of four coho smolts collected during the four sampling events ranged from 8.0 g to 10.6 g and averaged 9.4 (SD = 1.2). The fork length of the coho smolts ranged from 85 mm to 99 mm and averaged 91 mm (SD = 6). Coho salmon weight and length data was summarized by sampling week (Table 6), however all four retained samples were captured in the fourth week of sampling.

Table 6 Average weights and lengths of coho salmon collected in Jervis Inlet and Sechelt Inlet in 2021 summarized by sampling event.

Parameter	Coho Salmon			
	March 30/31, 2021	April 14/15, 2021	April 28/29, 2021	May 12/13, 2021
	(n=0)	(n=0)	(n=0)	(n=4)
Weight (g)	-	-	-	9.4
Length (mm)	-	-	-	91

3.4 Sea Lice Infestation Rates

The results of the laboratory analysis for the presence of sea lice on the wild juvenile salmonid sample population collected in Jervis Inlet and Sechelt Inlet in 2021 are presented in Table 7. The data recorded for each fish in the sample population during lab analysis is included in Appendix III. A total of 727 samples were collected at 15 sites in Jervis Inlet and Sechelt Inlet in 2021 and were inspected for sea lice infestation. Of the 727 samples collected, a total of 48 salmon in the sample population were found to be infested with 55 sea lice (Table 7). One stickleback in the sample population was found to be infested with one louse. This data reflects the identification of sea lice of either species (*L. salmonis* and *C. clemensi*) on inspected samples.

The sea lice prevalence in the sample population collected in Jervis Inlet and Sechelt Inlet in 2021 was 6.7 % and the abundance was 0.1 (Table 7).

The intensity of sea lice infestation, as defined as the number of sea lice on a single infested salmon, ranged from one louse found on 41 individuals to a maximum of two lice found on seven individual juvenile salmon. The average intensity was calculated by dividing the total number of sea lice by the number of infested fish of each species. The average intensity of the sample population within Jervis Inlet and Sechelt Inlet was 1.1 for the sample population (Table 7).

Table 7: Results of analysis for sea lice infestation on the sample population collected by beach seine in Jervis Inlet and Sechelt Inlet, BC in 2021.

Species	Sample size (n)	Total number of lice observed	Total number of fish infested	Prevalence (%)	Abundance	Average Intensity
chum	721	49	44	6.1	0.1	1.1
coho	4	6	4	100.0	1.5	1.5
stickleback	2	1	1	50.0	0.5	1.0
Total	727	56	49	6.7	0.1	1.1

3.4.1 Infestation Rates on Chum Salmon

The results of the laboratory analysis for sea lice infestation for chum salmon are presented by site in Table 8. A total of 44 chum salmon were found to be infested with 49 sea lice. The largest number of chum salmon infested with sea lice (16 chum) and the greatest number of sea lice (18) were found on samples collected from Site 6 (Table 8).

A total of 44 chum salmon were found to be infested with at least one sea louse. The prevalence of sea lice on the chum salmon sample population (n=721) collected in Jervis Inlet and Sechelt Inlet in 2021 was 6.1 %. Sea lice prevalence calculated by site for chum salmon is presented in Table 8. Sea lice prevalence calculated by site for the total chum sample population was highly variable ranging from a low of 0 % at Sites 1, 2, 9, and 15 to a high of 17.6% at Site 6.

A total of 49 sea lice were identified during laboratory analysis of retained chum salmon. The abundance of sea lice on the chum salmon sample population (n=721) collected in Jervis Inlet and Sechelt Inlet in 2021 was 0.1. Sea lice abundance was calculated by site and is presented in Table 8. The highest sea lice abundance (0.2) was at Site 6.

Within the chum salmon sample population, a total of 49 sea lice were found on 44 fish resulting in a sample population average intensity of 1.1. The highest sea lice intensity was 1.3 at Site 5.

Table 8: The number of sea lice found on chum salmon collected in Jervis Inlet and Sechelt Inlet, BC in 2021 summarized by the 15 sites where beach seining was conducted. Calculated sea lice prevalence and abundance is also included by site.

Site	# of Chum Analyzed	# of Infested Chum	Average Weight of Infested Chum (g)	# of Lice	Prevalence (%)	Abundance	Average Intensity
1	11	0	0.6	0	0.0	0.0	-
2	35	0	0.4	0	0.0	0.0	-
3	60	4	0.7	4	6.7	0.1	1.0
4	45	3	0.6	3	6.7	0.1	1.0
5	125	9	0.8	12	7.2	0.1	1.3
6	91	16	0.6	18	17.6	0.2	1.1
7	53	3	0.6	3	5.7	0.1	1.0
8	96	1	0.5	1	1.0	0.0	1.0
9	5	0	0.5	0	0.0	0.0	-
10	0	-	-	-	-	-	-
11	40	3	0.6	3	7.5	0.1	1.0
12	36	1	0.4	1	2.8	0.0	1.0
13	63	0	0.5	0	0.0	0.0	-
14	53	4	0.7	4	7.5	0.1	1.0
15	8	0	1.0	0	0.0	0.0	-
TOTAL	721	44	0.6	49	6.1	0.1	1.1

3.4.2 Infestation Rates on Coho

Four coho salmon were collected during beach seine sampling in Jervis Inlet and Sechelt Inlet in 2021. All four coho salmon were found to be infested with sea lice resulting in a species prevalence of 100.0 %, an abundance of 1.5 and an intensity of 1.5 (Table 7).

3.4.3 Infestation Rates on Threespine Stickleback

Two threespine stickleback were collected during beach seine sampling in Jervis Inlet and Sechelt Inlet in 2021. One of the stickleback was found to be infested with a single sea louse resulting in a species prevalence of 50.0 %, an abundance of 0.5 and an intensity of 1.0 (Table 7).

3.5 Infestation by Sea Lice Species

The total 2021 sample population contained 721 chum salmon, four coho salmon and two stickleback. Sea lice were present on chum, coho and stickleback collected from Jervis and Sechelt Inlets in 2021.

A total of 50 *Lepeophtheirus salmonis* sea lice of various life stages were identified on 43 juvenile salmon (chum, coho) and five *Caligus clemensi* were identified on five collected samples (Appendix III). There were no samples that were infested with both a *L. salmonis* and a *C. clemensi* sea louse (Appendix III).

3.5.1 Infestation by Life Stage on Chum Salmon

An analysis of the species of sea lice identified on the 721 chum salmon is presented in Table 9. A total of 44 *Lepeophtheirus salmonis* sea lice of various life stages and five *Caligus clemensi* were identified on 44 juvenile chum salmon. The sea lice species identified on chum salmon are also presented by site and week in Table 10.

Table 9: The number of sea lice in each life stage by species identified on the chum salmon sample population from Jervis Inlet and Sechelt Inlet in 2021. LEP = *Lepeophtheirus salmonis*, CAL = *Caligus clemensi*

Life Stage ¹	March 30/31, 2021	April 14/15, 2021	April 28/29, 2021	May 12/13, 2021
LEP Co	8	6	8	2
LEP C1	6	2	3	1
LEP C2	0	0	2	1
LEP PAM	0	0	1	2
LEP PAF	0	0	1	0
LEP AM	0	0	1	0
LEP AF	0	0	0	0
TOTAL LEP	14	8	16	6
CAL Co	0	0	0	0
CAL C1	0	0	0	0
CAL C2	0	0	0	0
CAL C3	0	0	0	1
CAL C4	0	0	0	0
CAL PAM	0	0	1	0
CAL PAF	0	0	0	2
CAL AM	0	0	0	0
CAL AF	0	0	0	1
TOTAL CAL	0	0	1	4

¹ Lice life stage codes: Co = copepodid, C1-4 = chalimus 1-4, PAM = pre-adult male, PAF = pre-adult female, AM = adult male, AF = adult female

Table 10: The number and species of sea lice found on chum salmon collected in Jarvis Inlet and Sechelt Inlet in 2021 summarized by week and by the sites where beach seining was conducted. LEP = *Lepeophtheirus salmonis* CAL = *Caligus clemensi*

Site	Sample Week																TOTAL		
	March 30/31, 2021				April 14/15, 2021				April 28/29, 2021				May 12/13, 2021						
	# of Chum Analyzed	# of Infested Chum	# of LEP	# of CAL	# of Chum Analyzed	# of Infested Chum	# of LEP	# of CAL	# of Chum Analyzed	# of Infested Chum	# of LEP	# of CAL	# of Chum Analyzed	# of Infested Chum	# of LEP	# of CAL	# of Chum Analyzed	# of Infested Chum	# of Lice
1	2	0	0	0	5	0	0	0	0	0	0	0	4	0	0	0	11	0	0
2	2	0	0	0	30	0	0	0	2	0	0	0	1	0	0	0	35	0	0
3	0	0	0	0	1	0	0	0	29	1	1	0	30	3	3	0	60	4	4
4	0	0	0	0	30	1	1	0	3	0	0	0	12	2	0	2	45	3	3
5	35	3	4	0	30	1	2	0	30	2	2	1	30	3	2	1	125	9	12
6	30	7	7	0	20	2	2	0	28	6	8	0	13	1	1	0	91	16	18
7	30	2	2	0	4	0	0	0	6	1	1	0	13	0	0	0	53	3	3
8	21	0	0	0	30	0	0	0	15	0	0	0	30	1	0	1	96	1	1
9	4	0	0	0	0	0	0	0	1	0	0	0	0	0	0	0	5	0	0
10	0	0	0	0	0	0	0	0	0	0	0	0	0	0	0	0	0	0	0
11	8	1	1	0	30	2	2	0	0	0	0	0	2	0	0	0	40	3	3
12	4	0	0	0	30	0	0	0	2	1	1	0	0	0	0	0	36	1	1
13	30	0	0	0	2	0	0	0	24	0	0	0	7	0	0	0	63	0	0
14	2	0	0	0	30	1	1	0	17	3	3	0	4	0	0	0	53	4	4
15	1	0	0	0	0	0	0	0	2	0	0	0	5	0	0	0	8	0	0
Totals	169	13	14	0	242	7	8	0	159	14	16	1	151	10	6	4	721	44	49

3.5.2 Infestation by Life Stage on Coho Salmon

Of the four coho salmon collected in Jervis and Sechelt Inlets in 2021 and analyzed in the lab, four samples were infested with six *Lepeophtheirus salmonis* sea lice. No *Caligus clemensi* sea lice were observed on the coho salmon samples. There were three copepodids and three chalimus on the coho samples (Appendix III).

3.5.3 Infestation by Life Stage on Threespine Stickleback

Of the two threespine stickleback collected in Jervis and Sechelt Inlets in 2021 and analyzed in the lab, one sample was infested with a single pre-adult male *Lepeophtheirus salmonis* sea lice. No *Caligus clemensi* sea lice were observed on the threespine stickleback samples (Appendix III).

4.0 Conclusions

This report presents the data from the sixth year of beach seining and sea lice analysis conducted for wild juvenile salmonid monitoring in Jervis Inlet and Sechelt Inlet, BC by Grieg Seafood, BC. This report is limited to the summary and presentation of the 2021 collected data.

A total of 727 samples underwent lab analysis for sea lice infestation including 721 chum salmon, four coho salmon and two stickleback. A total of 49 collected samples were found to be infested with sea lice in the total sample population resulting in a calculated sea lice prevalence of 6.7 % in 2021. A total of 56 sea lice were found during laboratory analysis resulting in an abundance of 0.1 and an average intensity of 1.1 for the total sample population.

A total of 3438 chum salmon were captured, representing 99.8 % of all captured samples. Of the 3438 chum salmon captured, 721 were kept for lab analysis for sea lice infestation. A total of 44 chum smolts were found to be infested with 49 lice resulting in a calculated prevalence of 6.1 %, abundance of 0.1 and average intensity of 1.1 for the chum salmon sample population.

Four coho salmon were captured, representing 0.1 % of all captured samples. Four coho were found to be infested with six lice resulting in a calculated prevalence of 100.0 %, abundance of 1.5 and average intensity of 1.5 for the coho salmon sample population.

A total of 50 *Lepeophtheirus salmonis* sea lice of various life stages were identified on 43 juvenile salmon (chum, coho) and five *Caligus clemensi* found on five of the juvenile salmon analyzed in the lab. There were no samples that were infested with both a *L. salmonis* and a *C. clemensi* sea louse.

A comparison of the prevalence abundance and intensity of sea lice species found on chum and pink salmon was completed for sample data from 2016 to 2021 collected in Jervis Inlet and Sechelt Inlet, BC. This data is presented in a summary table in Appendix IV.

5.0 References

- Hamre L.A., C Eichner, C.M.A. Caipang, S.T. Dalvin, J.E. Bron, F. Nilsen, G. Boxshall and R. Skern-Mauitzen. 2013. The Salmon Louse *Lepeophtheirus salmonis* (Copepoda: Caligidae) Life Cycle Has Only Two Chalimus Stages. PLoS ONE 8(9): e73539.
- Healey M.C. 1991. Life history of chinook salmon (*Oncorhynchus tshawytscha*). In: Pacific Salmon Life Histories. C Grott, L Margolis (eds.). UBC Press, Vancouver. Pp 313-393.
- Jones S. and S. Johnson. 2015. Sea lice monitoring and non-chemical measures A: Biology of sea lice, *Lepeophtheirus salmonis* and *Caligus spp.*, in western and eastern Canada. DFO Canadian Science Advisory Secretariat. Research Document 2014/019 Pacific Region. Pacific Biological Station, Fisheries and Oceans Canada.
- Jones S. and A. Nemec. 2004. Pink Salmon Action Plan Research. Part II: Sea Lice on Juvenile Salmon and on Three-spine Sticklebacks in 2003. PSARC Working Paper H2004-01.
- Johnson S.C. and L.J. Albright. 1991a. The developmental stages of *Lepeophtheirus salmonis* (Kroyer, 1837) (Copepoda: Caligidae). Canadian Journal of Zoology 69: 929-950.
- Johnson S.C. and L.J. Albright. 1991b. Development, growth and survival of *Lepeophtheirus salmonis* (Copepoda: Caligidae) under laboratory conditions. Journal of the Marine Biological Association of the UK 71: 425-436.
- Kabata Z. 1972. Developmental stages of *Caligus clemensi* (Copepoda: Caligidae) from fishes of British Columbia. Journal of the Fisheries Research Board of Canada 29: 1571-1593.
- Kabata Z. 1974. The species of *Lepeophtheirus* (Copepoda: Caligidae), from fishes of British Columbia. Journal of the Fisheries Research Board of Canada 30: 729-759.
- Margolis L., J.R. Arthur. 1979. Synopsis of the parasites of fishes of Canada. Bulletin of the Fisheries Research Board of Canada, Number 199. Ottawa. 269 pages.
- McDonald T.E., and L. Margolis. 1995. Synopsis of the parasites of fishes of Canada (1978-1993). Canadian Special Publication of Fisheries and Aquatic Sciences No. 122. National Research Council of Canada, Ottawa. 265 pages.
- Pacific Aquaculture Regulations. Finfish Aquaculture Licence conditions under the Pacific Aquaculture Regulations. Section 7. Sea Lice Monitoring
- Parker R.R. and L. Margolis. 1964. A new species of parasitic copepod, *Caligus clemensi* sp. nov. (Clogoida: Caligidae), from pelagic fishes in the coastal waters of British Columbia. Journal of Fisheries Research Board of Canada 21: 873-889.
- Pollard W.R., G.F. Hartman, C. Groot, and P. Edgell. 1997. Field Identification of Coastal Juvenile Salmonids. Published by Harbour Publishing for the Federal Department of Fisheries and Oceans and MacMillan Bloedel Ltd. Madeira Park, BC Canada.

- Saksida, S., Constantine J., Karreman G.A. and Donald A. 2007a. Evaluation of sea lice abundance levels on farmed Atlantic salmon (*Salmo salar* L) located in the Broughton Archipelago, British Columbia from 2003 to 2005. *Aquacult. Res.* 38: 219-231.
- Saksida, S., Karreman G.A., Constantine J., and Donald A. 2007b. Differences in *Lepeophtheirus salmonis* abundance levels on Atlantic salmon farms in the Broughton Archipelago, British Columbia, Canada. *J. Fish Dis.* 30:357-366.
- Salo E.O. 1991. Life history of chum salmon (*Oncorhynchus keta*). In: Pacific Salmon Life Histories. C Grott, L Margolis (eds). UBC Press, Vancouver. Pp 233-309.
- Sandercock F.K. 1991. Life history of coho salmon (*Oncorhynchus kisutch*). In: Pacific Salmon Life Histories. C. Grott, L. Margolis (eds). UBC Press, Vancouver. Pp 397-445.
- Tully O. 1992. Predicting infestation parameters and impacts of caligid copepods in wild and captured fish populations. *Invert. Reprod. Develop.* 22: 91-102.

Appendix I – Field Data

Date	Site Name	Salinity (ppt)	Temperature (deg C.)
		0.2m	0.2m
14-Apr-21	Site 1	27.8	8.6
14-Apr-21	Site 2	29.1	8.8
14-Apr-21	Site 7	29.5	9.4
14-Apr-21	Site 6	29.2	10.2
14-Apr-21	Site 3	29.1	10.5
14-Apr-21	Site 4	20.5	13.1
14-Apr-21	Site 5	25.2	11.5
15-Apr-21	Site 8	28.7	10.2
15-Apr-21	Site 9	28.7	9.9
15-Apr-21	Site 10	25.6	10.1
15-Apr-21	Site 11	27.9	10.5
15-Apr-21	Site 12	28.0	10.3
15-Apr-21	Site 13	25.2	10.1
15-Apr-21	Site 14	25.0	11.0
15-Apr-21	Site 15	27.8	12.2
30-Mar-21	Site 1	23.4	6.6
30-Mar-21	Site 2	25.8	7.0
30-Mar-21	Site 7	26.4	7.9
30-Mar-21	Site 6	25.4	7.8
30-Mar-21	Site 3	7.3	7.6
30-Mar-21	Site 4	18.6	7.3
30-Mar-21	Site 5	28.8	10.8
31-Mar-21	Site 8	18.8	7.7
31-Mar-21	Site 9	22.7	5.5
31-Mar-21	Site 10	21.2	6.9
31-Mar-21	Site 11	24.8	7.1
31-Mar-21	Site 12	27.8	5.8
31-Mar-21	Site 13	28.5	7.5
31-Mar-21	Site 14	23.2	8.8
31-Mar-21	Site 15	20.1	9.7
28-Apr-21	Site 1	26.3	13.5
28-Apr-21	Site 2	27.9	13.0
28-Apr-21	Site 7	27.8	13.2
28-Apr-21	Site 6	27.8	13.5
28-Apr-21	Site 3	16.4	15.4
28-Apr-21	Site 4	23.9	16.9
28-Apr-21	Site 5	24.9	15.5
29-Apr-21	Site 8	24.5	13.2
29-Apr-21	Site 9	21.0	12.9
29-Apr-21	Site 10	17.9	13.5

Date	Site Name	Salinity (ppt)	Temperature (deg C.)
		0.2m	0.2m
29-Apr-21	Site 11	20.0	13.8
29-Apr-21	Site 12	16.6	12.8
29-Apr-21	Site 13	20.3	13.0
29-Apr-21	Site 14	15.8	13.4
29-Apr-21	Site 15	10.8	14.5
12-May-21	Site 5	24.1	15.2
12-May-21	Site 4	16.1	15.7
12-May-21	Site 3	27.0	16.5
12-May-21	Site 2	21.1	15.8
12-May-21	Site 1	26.3	16.6
12-May-21	Site 7	26.9	16.9
12-May-21	Site 6	26.6	16.0
13-May-21	Site 8	23.2	14.1
13-May-21	Site 9	20.5	13.7
13-May-21	Site 10	13.5	13.9
13-May-21	Site 11	20.9	14.0
13-May-21	Site 12	23.7	13.4
13-May-21	Site 13	20.7	13.5
13-May-21	Site 14	15.4	14.2
13-May-21	Site 15	20.9	16.0

Appendix II – Capture and Collection Sample Totals

Date	Site Name	Weather Comments	Chum Captured	Chum Retained	Coho Captured	Coho Retained	TSB Captured	TSB Retained	Salmonid Mortalities	Comments
14-Apr-21	Site 1	Sun, Calm	5	5	0	0	0	0	0	No Bycatch
14-Apr-21	Site 2	Sun, Calm	31	30	0	0	0	0	0	No Bycatch
14-Apr-21	Site 7	Sun, Calm	4	4	0	0	0	0	0	No Bycatch
14-Apr-21	Site 6	Sun, Calm	20	20	0	0	0	0	0	No Bycatch
14-Apr-21	Site 3	Sun, Calm	1	1	0	0	0	0	0	2 Juvenile Lingcod
14-Apr-21	Site 4	Sun, Calm	519	30	0	0	0	0	1	1 Sand Lance. (20 chum retained for fish health)
14-Apr-21	Site 5	Sun, Calm	1100	30	0	0	0	0	0	1 Juvenile Flounder
15-Apr-21	Site 8	Clear, Calm	83	30	0	0	0	0	0	1 Pile Perch, 1 Striped Perch, 3 Shiner Perch, 2 Gunnels, 1 Large Jelly, 2 Greenlings, 2 Sculpins. (20 Chum retained for fish health)
15-Apr-21	Site 9	Clear, Calm	0	0	0	0	0	0	0	1 Sculpin
15-Apr-21	Site 10	Clear, Calm	0	0	0	0	0	0	0	5 Pile Perch, 1 Striped Perch, 1 Juvenile Lingcod, 1 Sculpin, 1 Juvenile Flounder
15-Apr-21	Site 11	Clear, Calm	49	30	0	0	0	0	0	No Bycatch
15-Apr-21	Site 12	Sun, Calm	72	30	0	0	0	0	0	No Bycatch
15-Apr-21	Site 13	Sun, Calm	2	2	0	0	0	0	0	1 Sea Cucumber, 1 Sculpin
15-Apr-21	Site 14	Sun, Calm	95	30	0	0	0	0	0	1 Sculpin
15-Apr-21	Site 15	Sun, Calm	0	0	0	0	0	0	0	1 Sculpin, 3 Sanddabs. 1 Shiner Perch
30-Mar-21	Site 1	Clear, Calm	2	2	0	0	0	0	0	1 Shiner Perch
30-Mar-21	Site 2	Clear, Calm	2	2	0	0	0	0	0	Lots of net Hang-ups
30-Mar-21	Site 7	Clear, Calm	45	30	0	0	0	0	0	
30-Mar-21	Site 6	Clear, Calm	79	30	0	0	0	0	0	
30-Mar-21	Site 3	Clear, Calm	0	0	0	0	0	0	0	1 Shiner Perch, 2 Sculpins
30-Mar-21	Site 4	Clear, Calm	5	0	0	0	0	0	0	Sculpin, Flounder, 2 Pipefish
30-Mar-21	Site 5	Clear, Calm	380	35	0	0	1	1	0	Red Rock Crab. (30 Chum retained for fish health)
31-Mar-21	Site 8	Clear, Calm	21	21	0	0	0	0	0	2 Gunnels, Sculpin and Kelp Greenling
31-Mar-21	Site 9	Clear, Slight Chop	4	4	0	0	0	0	0	
31-Mar-21	Site 10	Clear, Calm	0	0	0	0	0	0	0	1 Shiner Perch
31-Mar-21	Site 11	Clear, Calm	8	8	0	0	0	0	0	
31-Mar-21	Site 12	Clear, Calm	4	4	0	0	0	0	0	
31-Mar-21	Site 13	Clear, Calm	177	30	0	0	0	0	0	(20 Chum retained for fish health)
31-Mar-21	Site 14	Clear, Calm	2	2	0	0	0	0	0	
31-Mar-21	Site 15	Clear, Calm	1	1	0	0	0	0	0	Flounders and 1 Sculpin
28-Apr-21	Site 1	Overcast, Calm	0	0	0	0	0	0	0	
28-Apr-21	Site 2	Overcast, Calm	2	2	0	0	0	0	0	1 Juvenile Flatfish, 1 Shiner Perch, Abundant Crab Larvae
28-Apr-21	Site 7	Overcast, Calm	6	6	0	0	0	0	0	No Bycatch
28-Apr-21	Site 6	Overcast, Calm	28	28	0	0	0	0	0	2 Sculpins, 4 Sand Lances
28-Apr-21	Site 3	Rain, Calm	96	29	0	0	0	0	0	No Bycatch. (20 Chum retained for fish health)
28-Apr-21	Site 4	Rain, Calm	3	3	0	0	0	0	0	1 Juvenile Greenling, 10 Sculpins, 3 Juvenile Flounders

Date	Site Name	Weather Comments	Chum Captured	Chum Retained	Coho Captured	Coho Retained	TSB Captured	TSB Retained	Salmonid Mortalities	Comments
28-Apr-21	Site 5	Rain, Calm	234	30	0	0	0	0	0	Sea Cucumbers, Pipefish, Juvenile Greenling
29-Apr-21	Site 8	Overcast, Calm	15	15	0	0	0	0	0	4 Pipefish, 4 Juvenile Flatfish, Sculpins
29-Apr-21	Site 9	Overcast, Calm	1	1	0	0	0	0	0	no Bycatch
29-Apr-21	Site 10	Overcast, Calm	0	0	0	0	0	0	0	16 Shiner Perch, 2 Sculpins, 1 Sand Lance
29-Apr-21	Site 11	Overcast, Calm	0	0	0	0	0	0	0	1 Striped Perch, 5 Shiner Perch, 1 Sand Lance, 2 Sculpins
29-Apr-21	Site 12	Overcast, Calm	2	2	0	0	0	0	0	1 Sculpin
29-Apr-21	Site 13	Overcast, Calm	24	24	0	0	0	0	0	No Bycatch
29-Apr-21	Site 14	Overcast, Calm	17	17	0	0	0	0	0	1 Perch
29-Apr-21	Site 15	Overcast, Calm	2	2	0	0	0	0	0	1 Dungeness Crab
12-May-21	Site 5	Overcast, Calm	170	30	0	0	0	0	0	1 Sand Lance, 12 Flounders, 1 Gunnel, Abundant Sculpins, 8 Juvenile Greenlings, 1 Pipefish. (20 Chum retained for fish health)
12-May-21	Site 4	Overcast, Calm	12	12	0	0	0	0	0	2 Striped Perch, 2 Pile Perch, Juvenile Greenling, Sculpin
12-May-21	Site 3	Overcast, Calm	35	30	0	0	0	0	0	Cabezon, Sculpin, Flatfish, Juvenile Greenling, Shiner Perch
12-May-21	Site 2	Overcast, Calm	1	1	1	1	0	0	0	Abundant bycatch of Shiner Perch, Gunnels, Pipefish, Toadfish Sculpins, Gobies
12-May-21	Site 1	Overcast, Calm	4	4	0	0	0	0	0	2 Red Rock Crabs, Abundant bycatch of Shiner Perch, Pipefish, Toadfish, Sculpins, Juvenile Flounder
12-May-21	Site 7	Overcast, Calm	13	13	0	0	0	0	0	2 Red Rock Crabs, Abundant bycatch of Shiner Perch, Juvenile Greenling, Gobies, Pipefish
12-May-21	Site 6	Overcast, Calm	13	13	3	3	0	0	0	Shiner Perch, Gobies, Pipefish, Sculpins
13-May-21	Site 8	Sun, Calm	31	30	0	0	0	0	0	Lion's Mane Jelly, ~30 Shiner Perch
13-May-21	Site 9	Sun, Calm	0	0	0	0	0	0	0	3 Sculpins, 1 Juvenile Greenling, Abundant Jellies + Ctenophores
13-May-21	Site 10	Sun, Calm	0	0	0	0	0	0	0	8 Juvenile Rockfish, 3 Juvenile Greenling, ~25 Mixed Perch
13-May-21	Site 11	Sun, Calm	2	2	0	0	0	0	0	~15 assorted Perch
13-May-21	Site 12	Sun, Calm	0	0	0	0	0	0	0	2 Sculpins
13-May-21	Site 13	Sun, Calm	7	7	0	0	0	0	0	1 Shiner Perch, 7 Sculpins, 2 Juvenile Greenling
13-May-21	Site 14	Sun, Calm	4	4	0	0	1	1	0	~10 Shiner + Striped Perch, 8 Juvenile Rockfish
13-May-21	Site 15	Sun, Calm	5	5	0	0	0	0	0	8 Flatfish, 4 Gobies, 2 Juvenile Greenling

Appendix III – Sea Lice Analysis Data

SITE	WEEK	DATE COLLECTED	FISH SPECIES	FISH NUMBER	LENGTH IN MM	WEIGHT IN G	LEP Co	LEP C1	LEP C2	LEP PAM	LEP PAF	LEP AM	LEP AF	CAL Co	CAL C1	CAL C2	CAL C3	CAL C4	CAL PAM	CAL_PAF	CAL AM	CAL AF	TOT LICE ID	TOT LEP	TOT CAL
1	1	30-Mar-21	chum	408	32	0.3	0	0	0	0	0	0	0	0	0	0	0	0	0	0	0	0	0	0	0
1	1	30-Mar-21	chum	409	33	0.3	0	0	0	0	0	0	0	0	0	0	0	0	0	0	0	0	0	0	0
2	1	30-Mar-21	chum	402	35	0.3	0	0	0	0	0	0	0	0	0	0	0	0	0	0	0	0	0	0	0
2	1	30-Mar-21	chum	403	35	0.4	0	0	0	0	0	0	0	0	0	0	0	0	0	0	0	0	0	0	0
5	1	30-Mar-21	Stickleback	520	35	0.5	0	0	0	0	0	0	0	0	0	0	0	0	0	0	0	0	0	0	0
5	1	30-Mar-21	chum	521	35	0.5	0	0	0	0	0	0	0	0	0	0	0	0	0	0	0	0	0	0	0
5	1	30-Mar-21	chum	522	35	0.4	0	0	0	0	0	0	0	0	0	0	0	0	0	0	0	0	0	0	0
5	1	30-Mar-21	chum	523	36	0.5	0	0	0	0	0	0	0	0	0	0	0	0	0	0	0	0	0	0	0
5	1	30-Mar-21	chum	524	34	0.4	0	0	0	0	0	0	0	0	0	0	0	0	0	0	0	0	0	0	0
5	1	30-Mar-21	chum	525	35	0.5	0	0	0	0	0	0	0	0	0	0	0	0	0	0	0	0	0	0	0
5	1	30-Mar-21	chum	586	48	1.2	0	1	0	0	0	0	0	0	0	0	0	0	0	0	0	0	1	1	0
5	1	30-Mar-21	chum	587	54	1.7	0	0	0	0	0	0	0	0	0	0	0	0	0	0	0	0	0	0	0
5	1	30-Mar-21	chum	588	36	0.6	0	0	0	0	0	0	0	0	0	0	0	0	0	0	0	0	0	0	0
5	1	30-Mar-21	chum	589	52	1.6	0	0	0	0	0	0	0	0	0	0	0	0	0	0	0	0	0	0	0
5	1	30-Mar-21	chum	590	40	0.8	0	0	0	0	0	0	0	0	0	0	0	0	0	0	0	0	0	0	0
5	1	30-Mar-21	chum	591	38	0.7	0	0	0	0	0	0	0	0	0	0	0	0	0	0	0	0	0	0	0
5	1	30-Mar-21	chum	592	52	1.9	0	0	0	0	0	0	0	0	0	0	0	0	0	0	0	0	0	0	0
5	1	30-Mar-21	chum	593	48	1.2	0	0	0	0	0	0	0	0	0	0	0	0	0	0	0	0	0	0	0
5	1	30-Mar-21	chum	594	52	1.7	0	0	0	0	0	0	0	0	0	0	0	0	0	0	0	0	0	0	0
5	1	30-Mar-21	chum	595	49	1.3	0	0	0	0	0	0	0	0	0	0	0	0	0	0	0	0	0	0	0
5	1	30-Mar-21	chum	596	41	0.8	0	0	0	0	0	0	0	0	0	0	0	0	0	0	0	0	0	0	0
5	1	30-Mar-21	chum	597	41	0.9	0	0	0	0	0	0	0	0	0	0	0	0	0	0	0	0	0	0	0
5	1	30-Mar-21	chum	598	44	1.0	0	0	0	0	0	0	0	0	0	0	0	0	0	0	0	0	0	0	0
5	1	30-Mar-21	chum	599	49	0.7	0	0	0	0	0	0	0	0	0	0	0	0	0	0	0	0	0	0	0
5	1	30-Mar-21	chum	600	47	1.3	0	0	0	0	0	0	0	0	0	0	0	0	0	0	0	0	0	0	0
5	1	30-Mar-21	chum	601	47	1.2	0	0	0	0	0	0	0	0	0	0	0	0	0	0	0	0	0	0	0
5	1	30-Mar-21	chum	602	43	0.8	0	0	0	0	0	0	0	0	0	0	0	0	0	0	0	0	0	0	0
5	1	30-Mar-21	chum	603	46	1.1	0	0	0	0	0	0	0	0	0	0	0	0	0	0	0	0	0	0	0
5	1	30-Mar-21	chum	604	39	0.7	0	0	0	0	0	0	0	0	0	0	0	0	0	0	0	0	0	0	0
5	1	30-Mar-21	chum	605	47	1.3	0	0	0	0	0	0	0	0	0	0	0	0	0	0	0	0	0	0	0
5	1	30-Mar-21	chum	606	50	1.5	0	0	0	0	0	0	0	0	0	0	0	0	0	0	0	0	0	0	0
5	1	30-Mar-21	chum	607	47	1.2	1	0	0	0	0	0	0	0	0	0	0	0	0	0	0	0	1	1	0
5	1	30-Mar-21	chum	608	43	0.9	0	0	0	0	0	0	0	0	0	0	0	0	0	0	0	0	0	0	0
5	1	30-Mar-21	chum	609	37	0.6	0	0	0	0	0	0	0	0	0	0	0	0	0	0	0	0	0	0	0
5	1	30-Mar-21	chum	610	37	0.6	0	0	0	0	0	0	0	0	0	0	0	0	0	0	0	0	0	0	0
5	1	30-Mar-21	chum	611	34	0.5	0	0	0	0	0	0	0	0	0	0	0	0	0	0	0	0	0	0	0
5	1	30-Mar-21	chum	612	38	0.6	0	0	0	0	0	0	0	0	0	0	0	0	0	0	0	0	0	0	0
5	1	30-Mar-21	chum	613	46	1.4	0	0	0	0	0	0	0	0	0	0	0	0	0	0	0	0	0	0	0
5	1	30-Mar-21	chum	614	45	1.2	2	0	0	0	0	0	0	0	0	0	0	0	0	0	0	0	2	2	0
5	1	30-Mar-21	chum	615	36	0.6	0	0	0	0	0	0	0	0	0	0	0	0	0	0	0	0	0	0	0
6	1	30-Mar-21	chum	556	33	0.4	1	0	0	0	0	0	0	0	0	0	0	0	0	0	0	0	1	1	0
6	1	30-Mar-21	chum	557	37	0.6	0	0	0	0	0	0	0	0	0	0	0	0	0	0	0	0	0	0	0

SITE	WEEK	DATE COLLECTED	FISH SPECIES	FISH NUMBER	LENGTH IN MM	WEIGHT IN G	LEP Co	LEP C1	LEP C2	LEP PAM	LEP PAF	LEP AM	LEP AF	CAL Co	CAL C1	CAL C2	CAL C3	CAL C4	CAL PAM	CAL_PAF	CAL AM	CAL AF	TOT LICE ID	TOT LEP	TOT CAL
6	1	30-Mar-21	chum	558	41	0.8	0	0	0	0	0	0	0	0	0	0	0	0	0	0	0	0	0	0	0
6	1	30-Mar-21	chum	559	35	0.5	0	0	0	0	0	0	0	0	0	0	0	0	0	0	0	0	0	0	0
6	1	30-Mar-21	chum	560	33	0.4	0	0	0	0	0	0	0	0	0	0	0	0	0	0	0	0	0	0	0
6	1	30-Mar-21	chum	561	37	0.6	1	0	0	0	0	0	0	0	0	0	0	0	0	0	0	0	1	1	0
6	1	30-Mar-21	chum	562	35	0.5	0	0	0	0	0	0	0	0	0	0	0	0	0	0	0	0	0	0	0
6	1	30-Mar-21	chum	563	38	0.7	0	0	0	0	0	0	0	0	0	0	0	0	0	0	0	0	0	0	0
6	1	30-Mar-21	chum	564	39	0.7	0	0	0	0	0	0	0	0	0	0	0	0	0	0	0	0	0	0	0
6	1	30-Mar-21	chum	565	35	0.5	0	0	0	0	0	0	0	0	0	0	0	0	0	0	0	0	0	0	0
6	1	30-Mar-21	chum	566	35	0.4	0	0	0	0	0	0	0	0	0	0	0	0	0	0	0	0	0	0	0
6	1	30-Mar-21	chum	567	35	0.5	0	0	0	0	0	0	0	0	0	0	0	0	0	0	0	0	0	0	0
6	1	30-Mar-21	chum	568	46	1.2	0	1	0	0	0	0	0	0	0	0	0	0	0	0	0	0	1	1	0
6	1	30-Mar-21	chum	569	34	0.5	0	0	0	0	0	0	0	0	0	0	0	0	0	0	0	0	0	0	0
6	1	30-Mar-21	chum	570	35	0.6	0	0	0	0	0	0	0	0	0	0	0	0	0	0	0	0	0	0	0
6	1	30-Mar-21	chum	571	38	0.6	0	1	0	0	0	0	0	0	0	0	0	0	0	0	0	0	1	1	0
6	1	30-Mar-21	chum	572	43	1.0	0	0	0	0	0	0	0	0	0	0	0	0	0	0	0	0	0	0	0
6	1	30-Mar-21	chum	573	37	0.6	0	0	0	0	0	0	0	0	0	0	0	0	0	0	0	0	0	0	0
6	1	30-Mar-21	chum	574	39	0.7	0	0	0	0	0	0	0	0	0	0	0	0	0	0	0	0	0	0	0
6	1	30-Mar-21	chum	575	35	0.5	0	0	0	0	0	0	0	0	0	0	0	0	0	0	0	0	0	0	0
6	1	30-Mar-21	chum	576	36	0.6	0	0	0	0	0	0	0	0	0	0	0	0	0	0	0	0	0	0	0
6	1	30-Mar-21	chum	577	37	0.6	0	0	0	0	0	0	0	0	0	0	0	0	0	0	0	0	0	0	0
6	1	30-Mar-21	chum	578	37	0.7	0	1	0	0	0	0	0	0	0	0	0	0	0	0	0	0	1	1	0
6	1	30-Mar-21	chum	579	35	0.6	0	1	0	0	0	0	0	0	0	0	0	0	0	0	0	0	1	1	0
6	1	30-Mar-21	chum	580	38	0.6	0	0	0	0	0	0	0	0	0	0	0	0	0	0	0	0	0	0	0
6	1	30-Mar-21	chum	581	34	0.5	0	0	0	0	0	0	0	0	0	0	0	0	0	0	0	0	0	0	0
6	1	30-Mar-21	chum	582	35	0.4	1	0	0	0	0	0	0	0	0	0	0	0	0	0	0	0	1	1	0
6	1	30-Mar-21	chum	583	45	1.1	0	0	0	0	0	0	0	0	0	0	0	0	0	0	0	0	0	0	0
6	1	30-Mar-21	chum	584	41	0.9	0	0	0	0	0	0	0	0	0	0	0	0	0	0	0	0	0	0	0
6	1	30-Mar-21	chum	585	39	0.7	0	0	0	0	0	0	0	0	0	0	0	0	0	0	0	0	0	0	0
7	1	30-Mar-21	chum	664	34	0.4	0	0	0	0	0	0	0	0	0	0	0	0	0	0	0	0	0	0	0
7	1	30-Mar-21	chum	665	33	0.3	0	0	0	0	0	0	0	0	0	0	0	0	0	0	0	0	0	0	0
7	1	30-Mar-21	chum	666	34	0.4	0	0	0	0	0	0	0	0	0	0	0	0	0	0	0	0	0	0	0
7	1	30-Mar-21	chum	667	34	0.4	0	0	0	0	0	0	0	0	0	0	0	0	0	0	0	0	0	0	0
7	1	30-Mar-21	chum	668	36	0.5	0	0	0	0	0	0	0	0	0	0	0	0	0	0	0	0	0	0	0
7	1	30-Mar-21	chum	669	35	0.5	0	0	0	0	0	0	0	0	0	0	0	0	0	0	0	0	0	0	0
7	1	30-Mar-21	chum	670	34	0.4	0	0	0	0	0	0	0	0	0	0	0	0	0	0	0	0	0	0	0
7	1	30-Mar-21	chum	671	35	0.4	0	0	0	0	0	0	0	0	0	0	0	0	0	0	0	0	0	0	0
7	1	30-Mar-21	chum	672	33	0.4	0	0	0	0	0	0	0	0	0	0	0	0	0	0	0	0	0	0	0
7	1	30-Mar-21	chum	673	35	0.5	1	0	0	0	0	0	0	0	0	0	0	0	0	0	0	0	1	1	0
7	1	30-Mar-21	chum	674	33	0.4	0	0	0	0	0	0	0	0	0	0	0	0	0	0	0	0	0	0	0
7	1	30-Mar-21	chum	675	34	0.4	0	0	0	0	0	0	0	0	0	0	0	0	0	0	0	0	0	0	0
7	1	30-Mar-21	chum	676	35	0.4	0	0	0	0	0	0	0	0	0	0	0	0	0	0	0	0	0	0	0
7	1	30-Mar-21	chum	677	35	0.5	0	0	0	0	0	0	0	0	0	0	0	0	0	0	0	0	0	0	0
7	1	30-Mar-21	chum	678	35	0.6	0	0	0	0	0	0	0	0	0	0	0	0	0	0	0	0	0	0	0
7	1	30-Mar-21	chum	679	34	0.4	1	0	0	0	0	0	0	0	0	0	0	0	0	0	0	0	1	1	0
7	1	30-Mar-21	chum	680	35	0.3	0	0	0	0	0	0	0	0	0	0	0	0	0	0	0	0	0	0	0
7	1	30-Mar-21	chum	681	34	0.4	0	0	0	0	0	0	0	0	0	0	0	0	0	0	0	0	0	0	0

SITE	WEEK	DATE COLLECTED	FISH SPECIES	FISH NUMBER	LENGTH IN MM	WEIGHT IN G	LEP Co	LEP C1	LEP C2	LEP PAM	LEP PAF	LEP AM	LEP AF	CAL Co	CAL C1	CAL C2	CAL C3	CAL C4	CAL PAM	CAL_PAF	CAL AM	CAL AF	TOT LICE ID	TOT LEP	TOT CAL
7	1	30-Mar-21	chum	682	35	0.5	0	0	0	0	0	0	0	0	0	0	0	0	0	0	0	0	0	0	0
7	1	30-Mar-21	chum	683	33	0.4	0	0	0	0	0	0	0	0	0	0	0	0	0	0	0	0	0	0	0
7	1	30-Mar-21	chum	684	33	0.4	0	0	0	0	0	0	0	0	0	0	0	0	0	0	0	0	0	0	0
7	1	30-Mar-21	chum	685	33	0.4	0	0	0	0	0	0	0	0	0	0	0	0	0	0	0	0	0	0	0
7	1	30-Mar-21	chum	686	33	0.4	0	0	0	0	0	0	0	0	0	0	0	0	0	0	0	0	0	0	0
7	1	30-Mar-21	chum	687	35	0.4	0	0	0	0	0	0	0	0	0	0	0	0	0	0	0	0	0	0	0
7	1	30-Mar-21	chum	688	35	0.5	0	0	0	0	0	0	0	0	0	0	0	0	0	0	0	0	0	0	0
7	1	30-Mar-21	chum	689	36	0.5	0	0	0	0	0	0	0	0	0	0	0	0	0	0	0	0	0	0	0
7	1	30-Mar-21	chum	690	35	0.5	0	0	0	0	0	0	0	0	0	0	0	0	0	0	0	0	0	0	0
7	1	30-Mar-21	chum	691	35	0.4	0	0	0	0	0	0	0	0	0	0	0	0	0	0	0	0	0	0	0
7	1	30-Mar-21	chum	692	35	0.4	0	0	0	0	0	0	0	0	0	0	0	0	0	0	0	0	0	0	0
7	1	30-Mar-21	chum	693	34	0.4	0	0	0	0	0	0	0	0	0	0	0	0	0	0	0	0	0	0	0
8	1	31-Mar-21	chum	707	35	0.4	0	0	0	0	0	0	0	0	0	0	0	0	0	0	0	0	0	0	0
8	1	31-Mar-21	chum	708	35	0.5	0	0	0	0	0	0	0	0	0	0	0	0	0	0	0	0	0	0	0
8	1	31-Mar-21	chum	709	35	0.5	0	0	0	0	0	0	0	0	0	0	0	0	0	0	0	0	0	0	0
8	1	31-Mar-21	chum	710	43	0.8	0	0	0	0	0	0	0	0	0	0	0	0	0	0	0	0	0	0	0
8	1	31-Mar-21	chum	711	34	0.5	0	0	0	0	0	0	0	0	0	0	0	0	0	0	0	0	0	0	0
8	1	31-Mar-21	chum	712	32	0.3	0	0	0	0	0	0	0	0	0	0	0	0	0	0	0	0	0	0	0
8	1	31-Mar-21	chum	713	33	0.4	0	0	0	0	0	0	0	0	0	0	0	0	0	0	0	0	0	0	0
8	1	31-Mar-21	chum	714	33	0.4	0	0	0	0	0	0	0	0	0	0	0	0	0	0	0	0	0	0	0
8	1	31-Mar-21	chum	715	36	0.4	0	0	0	0	0	0	0	0	0	0	0	0	0	0	0	0	0	0	0
8	1	31-Mar-21	chum	716	34	0.4	0	0	0	0	0	0	0	0	0	0	0	0	0	0	0	0	0	0	0
8	1	31-Mar-21	chum	717	36	0.6	0	0	0	0	0	0	0	0	0	0	0	0	0	0	0	0	0	0	0
8	1	31-Mar-21	chum	718	34	0.5	0	0	0	0	0	0	0	0	0	0	0	0	0	0	0	0	0	0	0
8	1	31-Mar-21	chum	719	34	0.4	0	0	0	0	0	0	0	0	0	0	0	0	0	0	0	0	0	0	0
8	1	31-Mar-21	chum	720	34	0.5	0	0	0	0	0	0	0	0	0	0	0	0	0	0	0	0	0	0	0
8	1	31-Mar-21	chum	721	35	0.5	0	0	0	0	0	0	0	0	0	0	0	0	0	0	0	0	0	0	0
8	1	31-Mar-21	chum	722	35	0.5	0	0	0	0	0	0	0	0	0	0	0	0	0	0	0	0	0	0	0
8	1	31-Mar-21	chum	723	33	0.5	0	0	0	0	0	0	0	0	0	0	0	0	0	0	0	0	0	0	0
8	1	31-Mar-21	chum	724	33	0.4	0	0	0	0	0	0	0	0	0	0	0	0	0	0	0	0	0	0	0
8	1	31-Mar-21	chum	725	33	0.4	0	0	0	0	0	0	0	0	0	0	0	0	0	0	0	0	0	0	0
8	1	31-Mar-21	chum	726	33	0.5	0	0	0	0	0	0	0	0	0	0	0	0	0	0	0	0	0	0	0
8	1	31-Mar-21	chum	727	31	0.3	0	0	0	0	0	0	0	0	0	0	0	0	0	0	0	0	0	0	0
9	1	31-Mar-21	chum	694	34	0.5	0	0	0	0	0	0	0	0	0	0	0	0	0	0	0	0	0	0	0
9	1	31-Mar-21	chum	695	35	0.5	0	0	0	0	0	0	0	0	0	0	0	0	0	0	0	0	0	0	0
9	1	31-Mar-21	chum	696	36	0.6	0	0	0	0	0	0	0	0	0	0	0	0	0	0	0	0	0	0	0
9	1	31-Mar-21	chum	697	32	0.4	0	0	0	0	0	0	0	0	0	0	0	0	0	0	0	0	0	0	0
11	1	31-Mar-21	chum	698	34	0.4	0	0	0	0	0	0	0	0	0	0	0	0	0	0	0	0	0	0	0
11	1	31-Mar-21	chum	699	34	0.5	0	0	0	0	0	0	0	0	0	0	0	0	0	0	0	0	0	0	0
11	1	31-Mar-21	chum	700	32	0.6	0	0	0	0	0	0	0	0	0	0	0	0	0	0	0	0	0	0	0
11	1	31-Mar-21	chum	701	36	0.7	0	0	0	0	0	0	0	0	0	0	0	0	0	0	0	0	0	0	0
11	1	31-Mar-21	chum	702	37	0.5	0	0	0	0	0	0	0	0	0	0	0	0	0	0	0	0	0	0	0
11	1	31-Mar-21	chum	703	35	0.5	0	0	0	0	0	0	0	0	0	0	0	0	0	0	0	0	0	0	0
11	1	31-Mar-21	chum	704	38	0.8	0	1	0	0	0	0	0	0	0	0	0	0	0	0	0	0	1	1	0
11	1	31-Mar-21	chum	705	35	0.6	0	0	0	0	0	0	0	0	0	0	0	0	0	0	0	0	0	0	0
12	1	31-Mar-21	chum	404	34	0.3	0	0	0	0	0	0	0	0	0	0	0	0	0	0	0	0	0	0	0

SITE	WEEK	DATE COLLECTED	FISH SPECIES	FISH NUMBER	LENGTH IN MM	WEIGHT IN G	LEP Co	LEP C1	LEP C2	LEP PAM	LEP PAF	LEP AM	LEP AF	CAL Co	CAL C1	CAL C2	CAL C3	CAL C4	CAL PAM	CAL_PAF	CAL AM	CAL AF	TOT LICE ID	TOT LEP	TOT CAL
12	1	31-Mar-21	chum	405	35	0.5	0	0	0	0	0	0	0	0	0	0	0	0	0	0	0	0	0	0	0
12	1	31-Mar-21	chum	406	34	0.3	0	0	0	0	0	0	0	0	0	0	0	0	0	0	0	0	0	0	0
12	1	31-Mar-21	chum	407	35	0.4	0	0	0	0	0	0	0	0	0	0	0	0	0	0	0	0	0	0	0
13	1	31-Mar-21	chum	526	34	0.4	0	0	0	0	0	0	0	0	0	0	0	0	0	0	0	0	0	0	0
13	1	31-Mar-21	chum	527	33	0.4	0	0	0	0	0	0	0	0	0	0	0	0	0	0	0	0	0	0	0
13	1	31-Mar-21	chum	528	34	0.4	0	0	0	0	0	0	0	0	0	0	0	0	0	0	0	0	0	0	0
13	1	31-Mar-21	chum	529	33	0.3	0	0	0	0	0	0	0	0	0	0	0	0	0	0	0	0	0	0	0
13	1	31-Mar-21	chum	530	33	0.4	0	0	0	0	0	0	0	0	0	0	0	0	0	0	0	0	0	0	0
13	1	31-Mar-21	chum	531	32	0.3	0	0	0	0	0	0	0	0	0	0	0	0	0	0	0	0	0	0	0
13	1	31-Mar-21	chum	532	34	0.4	0	0	0	0	0	0	0	0	0	0	0	0	0	0	0	0	0	0	0
13	1	31-Mar-21	chum	533	33	0.4	0	0	0	0	0	0	0	0	0	0	0	0	0	0	0	0	0	0	0
13	1	31-Mar-21	chum	534	35	0.4	0	0	0	0	0	0	0	0	0	0	0	0	0	0	0	0	0	0	0
13	1	31-Mar-21	chum	535	32	0.3	0	0	0	0	0	0	0	0	0	0	0	0	0	0	0	0	0	0	0
13	1	31-Mar-21	chum	536	33	0.4	0	0	0	0	0	0	0	0	0	0	0	0	0	0	0	0	0	0	0
13	1	31-Mar-21	chum	537	33	0.4	0	0	0	0	0	0	0	0	0	0	0	0	0	0	0	0	0	0	0
13	1	31-Mar-21	chum	538	38	0.6	0	0	0	0	0	0	0	0	0	0	0	0	0	0	0	0	0	0	0
13	1	31-Mar-21	chum	539	33	0.3	0	0	0	0	0	0	0	0	0	0	0	0	0	0	0	0	0	0	0
13	1	31-Mar-21	chum	540	36	0.5	0	0	0	0	0	0	0	0	0	0	0	0	0	0	0	0	0	0	0
13	1	31-Mar-21	chum	541	34	0.4	0	0	0	0	0	0	0	0	0	0	0	0	0	0	0	0	0	0	0
13	1	31-Mar-21	chum	542	34	0.5	0	0	0	0	0	0	0	0	0	0	0	0	0	0	0	0	0	0	0
13	1	31-Mar-21	chum	543	32	0.5	0	0	0	0	0	0	0	0	0	0	0	0	0	0	0	0	0	0	0
13	1	31-Mar-21	chum	544	38	0.6	0	0	0	0	0	0	0	0	0	0	0	0	0	0	0	0	0	0	0
13	1	31-Mar-21	chum	545	33	0.4	0	0	0	0	0	0	0	0	0	0	0	0	0	0	0	0	0	0	0
13	1	31-Mar-21	chum	546	35	0.5	0	0	0	0	0	0	0	0	0	0	0	0	0	0	0	0	0	0	0
13	1	31-Mar-21	chum	547	35	0.6	0	0	0	0	0	0	0	0	0	0	0	0	0	0	0	0	0	0	0
13	1	31-Mar-21	chum	548	36	0.6	0	0	0	0	0	0	0	0	0	0	0	0	0	0	0	0	0	0	0
13	1	31-Mar-21	chum	549	33	0.4	0	0	0	0	0	0	0	0	0	0	0	0	0	0	0	0	0	0	0
13	1	31-Mar-21	chum	550	34	0.4	0	0	0	0	0	0	0	0	0	0	0	0	0	0	0	0	0	0	0
13	1	31-Mar-21	chum	551	35	0.6	0	0	0	0	0	0	0	0	0	0	0	0	0	0	0	0	0	0	0
13	1	31-Mar-21	chum	552	38	0.8	0	0	0	0	0	0	0	0	0	0	0	0	0	0	0	0	0	0	0
13	1	31-Mar-21	chum	553	34	0.5	0	0	0	0	0	0	0	0	0	0	0	0	0	0	0	0	0	0	0
13	1	31-Mar-21	chum	554	33	0.4	0	0	0	0	0	0	0	0	0	0	0	0	0	0	0	0	0	0	0
13	1	31-Mar-21	chum	555	35	0.5	0	0	0	0	0	0	0	0	0	0	0	0	0	0	0	0	0	0	0
14	1	31-Mar-21	chum	410	33	0.3	0	0	0	0	0	0	0	0	0	0	0	0	0	0	0	0	0	0	0
14	1	31-Mar-21	chum	411	34	0.4	0	0	0	0	0	0	0	0	0	0	0	0	0	0	0	0	0	0	0
15	1	31-Mar-21	chum	706	33	0.3	0	0	0	0	0	0	0	0	0	0	0	0	0	0	0	0	0	0	0
1	2	14-Apr-21	chum	659	34	0.4	0	0	0	0	0	0	0	0	0	0	0	0	0	0	0	0	0	0	0
1	2	14-Apr-21	chum	660	34	0.4	0	0	0	0	0	0	0	0	0	0	0	0	0	0	0	0	0	0	0
1	2	14-Apr-21	chum	661	34	0.3	0	0	0	0	0	0	0	0	0	0	0	0	0	0	0	0	0	0	0
1	2	14-Apr-21	chum	662	33	0.4	0	0	0	0	0	0	0	0	0	0	0	0	0	0	0	0	0	0	0
1	2	14-Apr-21	chum	663	35	0.5	0	0	0	0	0	0	0	0	0	0	0	0	0	0	0	0	0	0	0
2	2	14-Apr-21	chum	473	34	0.4	0	0	0	0	0	0	0	0	0	0	0	0	0	0	0	0	0	0	0
2	2	14-Apr-21	chum	474	32	0.4	0	0	0	0	0	0	0	0	0	0	0	0	0	0	0	0	0	0	0
2	2	14-Apr-21	chum	475	35	0.5	0	0	0	0	0	0	0	0	0	0	0	0	0	0	0	0	0	0	0
2	2	14-Apr-21	chum	476	33	0.4	0	0	0	0	0	0	0	0	0	0	0	0	0	0	0	0	0	0	0
2	2	14-Apr-21	chum	477	32	0.4	0	0	0	0	0	0	0	0	0	0	0	0	0	0	0	0	0	0	0

SITE	WEEK	DATE COLLECTED	FISH SPECIES	FISH NUMBER	LENGTH IN MM	WEIGHT IN G	LEP Co	LEP C1	LEP C2	LEP PAM	LEP PAF	LEP AM	LEP AF	CAL Co	CAL C1	CAL C2	CAL C3	CAL C4	CAL PAM	CAL_PAF	CAL AM	CAL AF	TOT LICE ID	TOT LEP	TOT CAL
2	2	14-Apr-21	chum	478	34	0.4	0	0	0	0	0	0	0	0	0	0	0	0	0	0	0	0	0	0	0
2	2	14-Apr-21	chum	479	34	0.4	0	0	0	0	0	0	0	0	0	0	0	0	0	0	0	0	0	0	0
2	2	14-Apr-21	chum	480	35	0.5	0	0	0	0	0	0	0	0	0	0	0	0	0	0	0	0	0	0	0
2	2	14-Apr-21	chum	481	34	0.3	0	0	0	0	0	0	0	0	0	0	0	0	0	0	0	0	0	0	0
2	2	14-Apr-21	chum	482	34	0.4	0	0	0	0	0	0	0	0	0	0	0	0	0	0	0	0	0	0	0
2	2	14-Apr-21	chum	483	34	0.5	0	0	0	0	0	0	0	0	0	0	0	0	0	0	0	0	0	0	0
2	2	14-Apr-21	chum	484	34	0.4	0	0	0	0	0	0	0	0	0	0	0	0	0	0	0	0	0	0	0
2	2	14-Apr-21	chum	485	36	0.5	0	0	0	0	0	0	0	0	0	0	0	0	0	0	0	0	0	0	0
2	2	14-Apr-21	chum	486	34	0.4	0	0	0	0	0	0	0	0	0	0	0	0	0	0	0	0	0	0	0
2	2	14-Apr-21	chum	487	35	0.4	0	0	0	0	0	0	0	0	0	0	0	0	0	0	0	0	0	0	0
2	2	14-Apr-21	chum	488	35	0.4	0	0	0	0	0	0	0	0	0	0	0	0	0	0	0	0	0	0	0
2	2	14-Apr-21	chum	489	31	0.3	0	0	0	0	0	0	0	0	0	0	0	0	0	0	0	0	0	0	0
2	2	14-Apr-21	chum	490	35	0.4	0	0	0	0	0	0	0	0	0	0	0	0	0	0	0	0	0	0	0
2	2	14-Apr-21	chum	491	36	0.5	0	0	0	0	0	0	0	0	0	0	0	0	0	0	0	0	0	0	0
2	2	14-Apr-21	chum	492	33	0.4	0	0	0	0	0	0	0	0	0	0	0	0	0	0	0	0	0	0	0
2	2	14-Apr-21	chum	493	33	0.4	0	0	0	0	0	0	0	0	0	0	0	0	0	0	0	0	0	0	0
2	2	14-Apr-21	chum	494	33	0.4	0	0	0	0	0	0	0	0	0	0	0	0	0	0	0	0	0	0	0
2	2	14-Apr-21	chum	495	34	0.5	0	0	0	0	0	0	0	0	0	0	0	0	0	0	0	0	0	0	0
2	2	14-Apr-21	chum	496	35	0.4	0	0	0	0	0	0	0	0	0	0	0	0	0	0	0	0	0	0	0
2	2	14-Apr-21	chum	497	32	0.3	0	0	0	0	0	0	0	0	0	0	0	0	0	0	0	0	0	0	0
2	2	14-Apr-21	chum	498	35	0.4	0	0	0	0	0	0	0	0	0	0	0	0	0	0	0	0	0	0	0
2	2	14-Apr-21	chum	499	34	0.4	0	0	0	0	0	0	0	0	0	0	0	0	0	0	0	0	0	0	0
2	2	14-Apr-21	chum	500	35	0.4	0	0	0	0	0	0	0	0	0	0	0	0	0	0	0	0	0	0	0
2	2	14-Apr-21	chum	501	33	0.4	0	0	0	0	0	0	0	0	0	0	0	0	0	0	0	0	0	0	0
2	2	14-Apr-21	chum	502	34	0.4	0	0	0	0	0	0	0	0	0	0	0	0	0	0	0	0	0	0	0
3	2	14-Apr-21	chum	412	35	0.4	0	0	0	0	0	0	0	0	0	0	0	0	0	0	0	0	0	0	0
4	2	14-Apr-21	chum	253	33	0.5	0	0	0	0	0	0	0	0	0	0	0	0	0	0	0	0	0	0	0
4	2	14-Apr-21	chum	254	31	0.3	0	0	0	0	0	0	0	0	0	0	0	0	0	0	0	0	0	0	0
4	2	14-Apr-21	chum	255	43	1.0	0	0	0	0	0	0	0	0	0	0	0	0	0	0	0	0	0	0	0
4	2	14-Apr-21	chum	256	32	0.4	0	0	0	0	0	0	0	0	0	0	0	0	0	0	0	0	0	0	0
4	2	14-Apr-21	chum	257	36	0.6	0	0	0	0	0	0	0	0	0	0	0	0	0	0	0	0	0	0	0
4	2	14-Apr-21	chum	258	34	0.4	0	0	0	0	0	0	0	0	0	0	0	0	0	0	0	0	0	0	0
4	2	14-Apr-21	chum	259	35	0.6	0	0	0	0	0	0	0	0	0	0	0	0	0	0	0	0	0	0	0
4	2	14-Apr-21	chum	260	33	0.5	0	0	0	0	0	0	0	0	0	0	0	0	0	0	0	0	0	0	0
4	2	14-Apr-21	chum	261	36	0.6	0	0	0	0	0	0	0	0	0	0	0	0	0	0	0	0	0	0	0
4	2	14-Apr-21	chum	262	39	0.8	0	1	0	0	0	0	0	0	0	0	0	0	0	0	0	0	1	1	0
4	2	14-Apr-21	chum	263	37	0.8	0	0	0	0	0	0	0	0	0	0	0	0	0	0	0	0	0	0	0
4	2	14-Apr-21	chum	264	41	0.9	0	0	0	0	0	0	0	0	0	0	0	0	0	0	0	0	0	0	0
4	2	14-Apr-21	chum	265	36	0.6	0	0	0	0	0	0	0	0	0	0	0	0	0	0	0	0	0	0	0
4	2	14-Apr-21	chum	266	31	0.3	0	0	0	0	0	0	0	0	0	0	0	0	0	0	0	0	0	0	0
4	2	14-Apr-21	chum	267	41	0.9	0	0	0	0	0	0	0	0	0	0	0	0	0	0	0	0	0	0	0
4	2	14-Apr-21	chum	268	33	0.5	0	0	0	0	0	0	0	0	0	0	0	0	0	0	0	0	0	0	0
4	2	14-Apr-21	chum	269	33	0.5	0	0	0	0	0	0	0	0	0	0	0	0	0	0	0	0	0	0	0
4	2	14-Apr-21	chum	270	35	0.5	0	0	0	0	0	0	0	0	0	0	0	0	0	0	0	0	0	0	0
4	2	14-Apr-21	chum	271	39	0.7	0	0	0	0	0	0	0	0	0	0	0	0	0	0	0	0	0	0	0
4	2	14-Apr-21	chum	272	33	0.5	0	0	0	0	0	0	0	0	0	0	0	0	0	0	0	0	0	0	0

SITE	WEEK	DATE COLLECTED	FISH SPECIES	FISH NUMBER	LENGTH IN MM	WEIGHT IN G	LEP Co	LEP C1	LEP C2	LEP PAM	LEP PAF	LEP AM	LEP AF	CAL Co	CAL C1	CAL C2	CAL C3	CAL C4	CAL PAM	CAL_PAF	CAL AM	CAL AF	TOT LICE ID	TOT LEP	TOT CAL
4	2	14-Apr-21	chum	273	32	0.4	0	0	0	0	0	0	0	0	0	0	0	0	0	0	0	0	0	0	0
4	2	14-Apr-21	chum	274	40	0.9	0	0	0	0	0	0	0	0	0	0	0	0	0	0	0	0	0	0	0
4	2	14-Apr-21	chum	275	32	0.4	0	0	0	0	0	0	0	0	0	0	0	0	0	0	0	0	0	0	0
4	2	14-Apr-21	chum	276	37	0.6	0	0	0	0	0	0	0	0	0	0	0	0	0	0	0	0	0	0	0
4	2	14-Apr-21	chum	277	32	0.4	0	0	0	0	0	0	0	0	0	0	0	0	0	0	0	0	0	0	0
4	2	14-Apr-21	chum	278	32	0.3	0	0	0	0	0	0	0	0	0	0	0	0	0	0	0	0	0	0	0
4	2	14-Apr-21	chum	279	34	0.4	0	0	0	0	0	0	0	0	0	0	0	0	0	0	0	0	0	0	0
4	2	14-Apr-21	chum	280	35	0.5	0	0	0	0	0	0	0	0	0	0	0	0	0	0	0	0	0	0	0
4	2	14-Apr-21	chum	281	35	0.6	0	0	0	0	0	0	0	0	0	0	0	0	0	0	0	0	0	0	0
4	2	14-Apr-21	chum	282	40	0.9	0	0	0	0	0	0	0	0	0	0	0	0	0	0	0	0	0	0	0
5	2	14-Apr-21	chum	372	35	0.4	0	0	0	0	0	0	0	0	0	0	0	0	0	0	0	0	0	0	0
5	2	14-Apr-21	chum	373	34	0.5	0	0	0	0	0	0	0	0	0	0	0	0	0	0	0	0	0	0	0
5	2	14-Apr-21	chum	374	34	0.6	0	0	0	0	0	0	0	0	0	0	0	0	0	0	0	0	0	0	0
5	2	14-Apr-21	chum	375	56	2.3	0	0	0	0	0	0	0	0	0	0	0	0	0	0	0	0	0	0	0
5	2	14-Apr-21	chum	376	34	0.5	0	0	0	0	0	0	0	0	0	0	0	0	0	0	0	0	0	0	0
5	2	14-Apr-21	chum	377	40	0.8	0	0	0	0	0	0	0	0	0	0	0	0	0	0	0	0	0	0	0
5	2	14-Apr-21	chum	378	33	0.4	0	0	0	0	0	0	0	0	0	0	0	0	0	0	0	0	0	0	0
5	2	14-Apr-21	chum	379	42	0.8	0	0	0	0	0	0	0	0	0	0	0	0	0	0	0	0	0	0	0
5	2	14-Apr-21	chum	380	34	0.4	0	0	0	0	0	0	0	0	0	0	0	0	0	0	0	0	0	0	0
5	2	14-Apr-21	chum	381	33	0.4	0	0	0	0	0	0	0	0	0	0	0	0	0	0	0	0	0	0	0
5	2	14-Apr-21	chum	382	34	0.4	0	0	0	0	0	0	0	0	0	0	0	0	0	0	0	0	0	0	0
5	2	14-Apr-21	chum	383	47	1.4	0	0	0	0	0	0	0	0	0	0	0	0	0	0	0	0	0	0	0
5	2	14-Apr-21	chum	384	36	0.6	0	0	0	0	0	0	0	0	0	0	0	0	0	0	0	0	0	0	0
5	2	14-Apr-21	chum	385	38	0.7	0	0	0	0	0	0	0	0	0	0	0	0	0	0	0	0	0	0	0
5	2	14-Apr-21	chum	386	47	1.2	0	0	0	0	0	0	0	0	0	0	0	0	0	0	0	0	0	0	0
5	2	14-Apr-21	chum	387	40	0.8	0	0	0	0	0	0	0	0	0	0	0	0	0	0	0	0	0	0	0
5	2	14-Apr-21	chum	388	35	0.5	0	0	0	0	0	0	0	0	0	0	0	0	0	0	0	0	0	0	0
5	2	14-Apr-21	chum	389	34	0.4	0	0	0	0	0	0	0	0	0	0	0	0	0	0	0	0	0	0	0
5	2	14-Apr-21	chum	390	34	0.5	2	0	0	0	0	0	0	0	0	0	0	0	0	0	0	0	2	2	0
5	2	14-Apr-21	chum	391	42	1.4	0	0	0	0	0	0	0	0	0	0	0	0	0	0	0	0	0	0	0
5	2	14-Apr-21	chum	392	36	0.6	0	0	0	0	0	0	0	0	0	0	0	0	0	0	0	0	0	0	0
5	2	14-Apr-21	chum	393	40	0.9	0	0	0	0	0	0	0	0	0	0	0	0	0	0	0	0	0	0	0
5	2	14-Apr-21	chum	394	50	1.6	0	0	0	0	0	0	0	0	0	0	0	0	0	0	0	0	0	0	0
5	2	14-Apr-21	chum	395	32	0.4	0	0	0	0	0	0	0	0	0	0	0	0	0	0	0	0	0	0	0
5	2	14-Apr-21	chum	396	35	0.5	0	0	0	0	0	0	0	0	0	0	0	0	0	0	0	0	0	0	0
5	2	14-Apr-21	chum	397	43	1.2	0	0	0	0	0	0	0	0	0	0	0	0	0	0	0	0	0	0	0
5	2	14-Apr-21	chum	398	43	1.0	0	0	0	0	0	0	0	0	0	0	0	0	0	0	0	0	0	0	0
5	2	14-Apr-21	chum	399	32	0.4	0	0	0	0	0	0	0	0	0	0	0	0	0	0	0	0	0	0	0
5	2	14-Apr-21	chum	400	32	0.5	0	0	0	0	0	0	0	0	0	0	0	0	0	0	0	0	0	0	0
5	2	14-Apr-21	chum	401	35	0.5	0	0	0	0	0	0	0	0	0	0	0	0	0	0	0	0	0	0	0
6	2	14-Apr-21	chum	317	34	0.4	0	0	0	0	0	0	0	0	0	0	0	0	0	0	0	0	0	0	0
6	2	14-Apr-21	chum	318	34	0.4	0	0	0	0	0	0	0	0	0	0	0	0	0	0	0	0	0	0	0
6	2	14-Apr-21	chum	319	36	0.6	0	0	0	0	0	0	0	0	0	0	0	0	0	0	0	0	0	0	0
6	2	14-Apr-21	chum	320	36	0.5	0	0	0	0	0	0	0	0	0	0	0	0	0	0	0	0	0	0	0
6	2	14-Apr-21	chum	321	33	0.4	0	0	0	0	0	0	0	0	0	0	0	0	0	0	0	0	0	0	0
6	2	14-Apr-21	chum	322	34	0.5	0	0	0	0	0	0	0	0	0	0	0	0	0	0	0	0	0	0	0

SITE	WEEK	DATE COLLECTED	FISH SPECIES	FISH NUMBER	LENGTH IN MM	WEIGHT IN G	LEP Co	LEP C1	LEP C2	LEP PAM	LEP PAF	LEP AM	LEP AF	CAL Co	CAL C1	CAL C2	CAL C3	CAL C4	CAL PAM	CAL_PAF	CAL AM	CAL AF	TOT LICE ID	TOT LEP	TOT CAL
6	2	14-Apr-21	chum	323	34	0.4	0	0	0	0	0	0	0	0	0	0	0	0	0	0	0	0	0	0	0
6	2	14-Apr-21	chum	324	34	0.4	0	0	0	0	0	0	0	0	0	0	0	0	0	0	0	0	0	0	0
6	2	14-Apr-21	chum	325	35	0.4	0	0	0	0	0	0	0	0	0	0	0	0	0	0	0	0	0	0	0
6	2	14-Apr-21	chum	326	35	0.4	0	0	0	0	0	0	0	0	0	0	0	0	0	0	0	0	0	0	0
6	2	14-Apr-21	chum	327	37	0.6	0	1	0	0	0	0	0	0	0	0	0	0	0	0	0	0	1	1	0
6	2	14-Apr-21	chum	328	33	0.4	0	0	0	0	0	0	0	0	0	0	0	0	0	0	0	0	0	0	0
6	2	14-Apr-21	chum	329	33	0.4	0	0	0	0	0	0	0	0	0	0	0	0	0	0	0	0	0	0	0
6	2	14-Apr-21	chum	330	32	0.4	0	0	0	0	0	0	0	0	0	0	0	0	0	0	0	0	0	0	0
6	2	14-Apr-21	chum	331	35	0.5	0	0	0	0	0	0	0	0	0	0	0	0	0	0	0	0	0	0	0
6	2	14-Apr-21	chum	332	34	0.5	0	0	0	0	0	0	0	0	0	0	0	0	0	0	0	0	0	0	0
6	2	14-Apr-21	chum	333	35	0.5	0	0	0	0	0	0	0	0	0	0	0	0	0	0	0	0	0	0	0
6	2	14-Apr-21	chum	334	34	0.4	0	0	0	0	0	0	0	0	0	0	0	0	0	0	0	0	0	0	0
6	2	14-Apr-21	chum	335	34	0.4	1	0	0	0	0	0	0	0	0	0	0	0	0	0	0	0	1	1	0
6	2	14-Apr-21	chum	336	34	0.5	0	0	0	0	0	0	0	0	0	0	0	0	0	0	0	0	0	0	0
7	2	14-Apr-21	chum	313	34	0.4	0	0	0	0	0	0	0	0	0	0	0	0	0	0	0	0	0	0	0
7	2	14-Apr-21	chum	314	33	0.5	0	0	0	0	0	0	0	0	0	0	0	0	0	0	0	0	0	0	0
7	2	14-Apr-21	chum	315	33	0.4	0	0	0	0	0	0	0	0	0	0	0	0	0	0	0	0	0	0	0
7	2	14-Apr-21	chum	316	37	0.6	0	0	0	0	0	0	0	0	0	0	0	0	0	0	0	0	0	0	0
8	2	15-Apr-21	chum	342	35	0.5	0	0	0	0	0	0	0	0	0	0	0	0	0	0	0	0	0	0	0
8	2	15-Apr-21	chum	343	34	0.4	0	0	0	0	0	0	0	0	0	0	0	0	0	0	0	0	0	0	0
8	2	15-Apr-21	chum	344	34	0.3	0	0	0	0	0	0	0	0	0	0	0	0	0	0	0	0	0	0	0
8	2	15-Apr-21	chum	345	35	0.4	0	0	0	0	0	0	0	0	0	0	0	0	0	0	0	0	0	0	0
8	2	15-Apr-21	chum	346	35	0.5	0	0	0	0	0	0	0	0	0	0	0	0	0	0	0	0	0	0	0
8	2	15-Apr-21	chum	347	35	0.5	0	0	0	0	0	0	0	0	0	0	0	0	0	0	0	0	0	0	0
8	2	15-Apr-21	chum	348	34	0.4	0	0	0	0	0	0	0	0	0	0	0	0	0	0	0	0	0	0	0
8	2	15-Apr-21	chum	349	35	0.5	0	0	0	0	0	0	0	0	0	0	0	0	0	0	0	0	0	0	0
8	2	15-Apr-21	chum	350	36	0.5	0	0	0	0	0	0	0	0	0	0	0	0	0	0	0	0	0	0	0
8	2	15-Apr-21	chum	351	40	0.7	0	0	0	0	0	0	0	0	0	0	0	0	0	0	0	0	0	0	0
8	2	15-Apr-21	chum	352	34	0.4	0	0	0	0	0	0	0	0	0	0	0	0	0	0	0	0	0	0	0
8	2	15-Apr-21	chum	353	35	0.6	0	0	0	0	0	0	0	0	0	0	0	0	0	0	0	0	0	0	0
8	2	15-Apr-21	chum	354	34	0.4	0	0	0	0	0	0	0	0	0	0	0	0	0	0	0	0	0	0	0
8	2	15-Apr-21	chum	355	36	0.5	0	0	0	0	0	0	0	0	0	0	0	0	0	0	0	0	0	0	0
8	2	15-Apr-21	chum	356	33	0.4	0	0	0	0	0	0	0	0	0	0	0	0	0	0	0	0	0	0	0
8	2	15-Apr-21	chum	357	35	0.4	0	0	0	0	0	0	0	0	0	0	0	0	0	0	0	0	0	0	0
8	2	15-Apr-21	chum	358	37	0.6	0	0	0	0	0	0	0	0	0	0	0	0	0	0	0	0	0	0	0
8	2	15-Apr-21	chum	359	35	0.5	0	0	0	0	0	0	0	0	0	0	0	0	0	0	0	0	0	0	0
8	2	15-Apr-21	chum	360	38	0.5	0	0	0	0	0	0	0	0	0	0	0	0	0	0	0	0	0	0	0
8	2	15-Apr-21	chum	361	35	0.5	0	0	0	0	0	0	0	0	0	0	0	0	0	0	0	0	0	0	0
8	2	15-Apr-21	chum	362	40	0.8	0	0	0	0	0	0	0	0	0	0	0	0	0	0	0	0	0	0	0
8	2	15-Apr-21	chum	363	36	0.4	0	0	0	0	0	0	0	0	0	0	0	0	0	0	0	0	0	0	0
8	2	15-Apr-21	chum	364	37	0.6	0	0	0	0	0	0	0	0	0	0	0	0	0	0	0	0	0	0	0
8	2	15-Apr-21	chum	365	34	0.4	0	0	0	0	0	0	0	0	0	0	0	0	0	0	0	0	0	0	0
8	2	15-Apr-21	chum	366	35	0.4	0	0	0	0	0	0	0	0	0	0	0	0	0	0	0	0	0	0	0
8	2	15-Apr-21	chum	367	35	0.4	0	0	0	0	0	0	0	0	0	0	0	0	0	0	0	0	0	0	0
8	2	15-Apr-21	chum	368	39	0.7	0	0	0	0	0	0	0	0	0	0	0	0	0	0	0	0	0	0	0
8	2	15-Apr-21	chum	369	35	0.5	0	0	0	0	0	0	0	0	0	0	0	0	0	0	0	0	0	0	0

SITE	WEEK	DATE COLLECTED	FISH SPECIES	FISH NUMBER	LENGTH IN MM	WEIGHT IN G	LEP Co	LEP C1	LEP C2	LEP PAM	LEP PAF	LEP AM	LEP AF	CAL Co	CAL C1	CAL C2	CAL C3	CAL C4	CAL PAM	CAL_PAF	CAL AM	CAL AF	TOT LICE ID	TOT LEP	TOT CAL
8	2	15-Apr-21	chum	370	37	0.5	0	0	0	0	0	0	0	0	0	0	0	0	0	0	0	0	0	0	0
8	2	15-Apr-21	chum	371	34	0.4	0	0	0	0	0	0	0	0	0	0	0	0	0	0	0	0	0	0	0
11	2	15-Apr-21	chum	443	36	0.5	0	0	0	0	0	0	0	0	0	0	0	0	0	0	0	0	0	0	0
11	2	15-Apr-21	chum	444	39	0.8	0	0	0	0	0	0	0	0	0	0	0	0	0	0	0	0	0	0	0
11	2	15-Apr-21	chum	445	39	0.7	0	0	0	0	0	0	0	0	0	0	0	0	0	0	0	0	0	0	0
11	2	15-Apr-21	chum	446	35	0.5	1	0	0	0	0	0	0	0	0	0	0	0	0	0	0	0	1	1	0
11	2	15-Apr-21	chum	447	31	0.4	0	0	0	0	0	0	0	0	0	0	0	0	0	0	0	0	0	0	0
11	2	15-Apr-21	chum	448	33	0.4	1	0	0	0	0	0	0	0	0	0	0	0	0	0	0	0	1	1	0
11	2	15-Apr-21	chum	449	34	0.4	0	0	0	0	0	0	0	0	0	0	0	0	0	0	0	0	0	0	0
11	2	15-Apr-21	chum	450	38	0.6	0	0	0	0	0	0	0	0	0	0	0	0	0	0	0	0	0	0	0
11	2	15-Apr-21	chum	451	35	0.5	0	0	0	0	0	0	0	0	0	0	0	0	0	0	0	0	0	0	0
11	2	15-Apr-21	chum	452	32	0.4	0	0	0	0	0	0	0	0	0	0	0	0	0	0	0	0	0	0	0
11	2	15-Apr-21	chum	453	34	0.5	0	0	0	0	0	0	0	0	0	0	0	0	0	0	0	0	0	0	0
11	2	15-Apr-21	chum	454	35	0.6	0	0	0	0	0	0	0	0	0	0	0	0	0	0	0	0	0	0	0
11	2	15-Apr-21	chum	455	35	0.5	0	0	0	0	0	0	0	0	0	0	0	0	0	0	0	0	0	0	0
11	2	15-Apr-21	chum	456	36	0.6	0	0	0	0	0	0	0	0	0	0	0	0	0	0	0	0	0	0	0
11	2	15-Apr-21	chum	457	38	0.9	0	0	0	0	0	0	0	0	0	0	0	0	0	0	0	0	0	0	0
11	2	15-Apr-21	chum	458	34	0.5	0	0	0	0	0	0	0	0	0	0	0	0	0	0	0	0	0	0	0
11	2	15-Apr-21	chum	459	38	0.7	0	0	0	0	0	0	0	0	0	0	0	0	0	0	0	0	0	0	0
11	2	15-Apr-21	chum	460	34	0.5	0	0	0	0	0	0	0	0	0	0	0	0	0	0	0	0	0	0	0
11	2	15-Apr-21	chum	461	34	0.5	0	0	0	0	0	0	0	0	0	0	0	0	0	0	0	0	0	0	0
11	2	15-Apr-21	chum	462	35	0.5	0	0	0	0	0	0	0	0	0	0	0	0	0	0	0	0	0	0	0
11	2	15-Apr-21	chum	463	38	0.8	0	0	0	0	0	0	0	0	0	0	0	0	0	0	0	0	0	0	0
11	2	15-Apr-21	chum	464	33	0.5	0	0	0	0	0	0	0	0	0	0	0	0	0	0	0	0	0	0	0
11	2	15-Apr-21	chum	465	34	0.5	0	0	0	0	0	0	0	0	0	0	0	0	0	0	0	0	0	0	0
11	2	15-Apr-21	chum	466	37	0.7	0	0	0	0	0	0	0	0	0	0	0	0	0	0	0	0	0	0	0
11	2	15-Apr-21	chum	467	37	0.6	0	0	0	0	0	0	0	0	0	0	0	0	0	0	0	0	0	0	0
11	2	15-Apr-21	chum	468	35	0.6	0	0	0	0	0	0	0	0	0	0	0	0	0	0	0	0	0	0	0
11	2	15-Apr-21	chum	469	35	0.6	0	0	0	0	0	0	0	0	0	0	0	0	0	0	0	0	0	0	0
11	2	15-Apr-21	chum	470	36	0.5	0	0	0	0	0	0	0	0	0	0	0	0	0	0	0	0	0	0	0
11	2	15-Apr-21	chum	471	35	0.5	0	0	0	0	0	0	0	0	0	0	0	0	0	0	0	0	0	0	0
11	2	15-Apr-21	chum	472	34	0.5	0	0	0	0	0	0	0	0	0	0	0	0	0	0	0	0	0	0	0
12	2	15-Apr-21	chum	283	35	0.5	0	0	0	0	0	0	0	0	0	0	0	0	0	0	0	0	0	0	0
12	2	15-Apr-21	chum	284	34	0.3	0	0	0	0	0	0	0	0	0	0	0	0	0	0	0	0	0	0	0
12	2	15-Apr-21	chum	285	35	0.4	0	0	0	0	0	0	0	0	0	0	0	0	0	0	0	0	0	0	0
12	2	15-Apr-21	chum	286	36	0.4	0	0	0	0	0	0	0	0	0	0	0	0	0	0	0	0	0	0	0
12	2	15-Apr-21	chum	287	34	0.3	0	0	0	0	0	0	0	0	0	0	0	0	0	0	0	0	0	0	0
12	2	15-Apr-21	chum	288	36	0.5	0	0	0	0	0	0	0	0	0	0	0	0	0	0	0	0	0	0	0
12	2	15-Apr-21	chum	289	35	0.4	0	0	0	0	0	0	0	0	0	0	0	0	0	0	0	0	0	0	0
12	2	15-Apr-21	chum	290	35	0.5	0	0	0	0	0	0	0	0	0	0	0	0	0	0	0	0	0	0	0
12	2	15-Apr-21	chum	291	38	0.4	0	0	0	0	0	0	0	0	0	0	0	0	0	0	0	0	0	0	0
12	2	15-Apr-21	chum	292	35	0.4	0	0	0	0	0	0	0	0	0	0	0	0	0	0	0	0	0	0	0
12	2	15-Apr-21	chum	293	35	0.4	0	0	0	0	0	0	0	0	0	0	0	0	0	0	0	0	0	0	0
12	2	15-Apr-21	chum	294	35	0.5	0	0	0	0	0	0	0	0	0	0	0	0	0	0	0	0	0	0	0
12	2	15-Apr-21	chum	295	35	0.4	0	0	0	0	0	0	0	0	0	0	0	0	0	0	0	0	0	0	0
12	2	15-Apr-21	chum	296	35	0.5	0	0	0	0	0	0	0	0	0	0	0	0	0	0	0	0	0	0	0

SITE	WEEK	DATE COLLECTED	FISH SPECIES	FISH NUMBER	LENGTH IN MM	WEIGHT IN G	LEP Co	LEP C1	LEP C2	LEP PAM	LEP PAF	LEP AM	LEP AF	CAL Co	CAL C1	CAL C2	CAL C3	CAL C4	CAL PAM	CAL_PAF	CAL AM	CAL AF	TOT LICE ID	TOT LEP	TOT CAL
12	2	15-Apr-21	chum	297	35	0.4	0	0	0	0	0	0	0	0	0	0	0	0	0	0	0	0	0	0	0
12	2	15-Apr-21	chum	298	36	0.4	0	0	0	0	0	0	0	0	0	0	0	0	0	0	0	0	0	0	0
12	2	15-Apr-21	chum	299	34	0.4	0	0	0	0	0	0	0	0	0	0	0	0	0	0	0	0	0	0	0
12	2	15-Apr-21	chum	300	35	0.3	0	0	0	0	0	0	0	0	0	0	0	0	0	0	0	0	0	0	0
12	2	15-Apr-21	chum	301	35	0.3	0	0	0	0	0	0	0	0	0	0	0	0	0	0	0	0	0	0	0
12	2	15-Apr-21	chum	302	35	0.3	0	0	0	0	0	0	0	0	0	0	0	0	0	0	0	0	0	0	0
12	2	15-Apr-21	chum	303	34	0.3	0	0	0	0	0	0	0	0	0	0	0	0	0	0	0	0	0	0	0
12	2	15-Apr-21	chum	304	37	0.5	0	0	0	0	0	0	0	0	0	0	0	0	0	0	0	0	0	0	0
12	2	15-Apr-21	chum	305	34	0.3	0	0	0	0	0	0	0	0	0	0	0	0	0	0	0	0	0	0	0
12	2	15-Apr-21	chum	306	37	0.4	0	0	0	0	0	0	0	0	0	0	0	0	0	0	0	0	0	0	0
12	2	15-Apr-21	chum	307	37	0.5	0	0	0	0	0	0	0	0	0	0	0	0	0	0	0	0	0	0	0
12	2	15-Apr-21	chum	308	37	0.5	0	0	0	0	0	0	0	0	0	0	0	0	0	0	0	0	0	0	0
12	2	15-Apr-21	chum	309	36	0.5	0	0	0	0	0	0	0	0	0	0	0	0	0	0	0	0	0	0	0
12	2	15-Apr-21	chum	310	34	0.3	0	0	0	0	0	0	0	0	0	0	0	0	0	0	0	0	0	0	0
12	2	15-Apr-21	chum	311	38	0.6	0	0	0	0	0	0	0	0	0	0	0	0	0	0	0	0	0	0	0
12	2	15-Apr-21	chum	312	42	0.8	0	0	0	0	0	0	0	0	0	0	0	0	0	0	0	0	0	0	0
13	2	15-Apr-21	chum	337	35	0.4	0	0	0	0	0	0	0	0	0	0	0	0	0	0	0	0	0	0	0
13	2	15-Apr-21	chum	338	33	0.3	0	0	0	0	0	0	0	0	0	0	0	0	0	0	0	0	0	0	0
14	2	15-Apr-21	chum	413	45	1.1	0	0	0	0	0	0	0	0	0	0	0	0	0	0	0	0	0	0	0
14	2	15-Apr-21	chum	414	32	0.4	0	0	0	0	0	0	0	0	0	0	0	0	0	0	0	0	0	0	0
14	2	15-Apr-21	chum	415	36	0.5	0	0	0	0	0	0	0	0	0	0	0	0	0	0	0	0	0	0	0
14	2	15-Apr-21	chum	416	38	0.7	0	0	0	0	0	0	0	0	0	0	0	0	0	0	0	0	0	0	0
14	2	15-Apr-21	chum	417	46	1.1	1	0	0	0	0	0	0	0	0	0	0	0	0	0	0	0	1	1	0
14	2	15-Apr-21	chum	418	31	0.3	0	0	0	0	0	0	0	0	0	0	0	0	0	0	0	0	0	0	0
14	2	15-Apr-21	chum	419	34	0.4	0	0	0	0	0	0	0	0	0	0	0	0	0	0	0	0	0	0	0
14	2	15-Apr-21	chum	420	41	0.9	0	0	0	0	0	0	0	0	0	0	0	0	0	0	0	0	0	0	0
14	2	15-Apr-21	chum	421	34	0.5	0	0	0	0	0	0	0	0	0	0	0	0	0	0	0	0	0	0	0
14	2	15-Apr-21	chum	422	37	0.6	0	0	0	0	0	0	0	0	0	0	0	0	0	0	0	0	0	0	0
14	2	15-Apr-21	chum	423	38	0.7	0	0	0	0	0	0	0	0	0	0	0	0	0	0	0	0	0	0	0
14	2	15-Apr-21	chum	424	40	0.8	0	0	0	0	0	0	0	0	0	0	0	0	0	0	0	0	0	0	0
14	2	15-Apr-21	chum	425	33	0.4	0	0	0	0	0	0	0	0	0	0	0	0	0	0	0	0	0	0	0
14	2	15-Apr-21	chum	426	37	0.7	0	0	0	0	0	0	0	0	0	0	0	0	0	0	0	0	0	0	0
14	2	15-Apr-21	chum	427	43	1.2	0	0	0	0	0	0	0	0	0	0	0	0	0	0	0	0	0	0	0
14	2	15-Apr-21	chum	428	34	0.5	0	0	0	0	0	0	0	0	0	0	0	0	0	0	0	0	0	0	0
14	2	15-Apr-21	chum	429	32	0.4	0	0	0	0	0	0	0	0	0	0	0	0	0	0	0	0	0	0	0
14	2	15-Apr-21	chum	430	38	0.8	0	0	0	0	0	0	0	0	0	0	0	0	0	0	0	0	0	0	0
14	2	15-Apr-21	chum	431	39	0.8	0	0	0	0	0	0	0	0	0	0	0	0	0	0	0	0	0	0	0
14	2	15-Apr-21	chum	432	33	0.5	0	0	0	0	0	0	0	0	0	0	0	0	0	0	0	0	0	0	0
14	2	15-Apr-21	chum	433	38	0.8	0	0	0	0	0	0	0	0	0	0	0	0	0	0	0	0	0	0	0
14	2	15-Apr-21	chum	434	37	0.6	0	0	0	0	0	0	0	0	0	0	0	0	0	0	0	0	0	0	0
14	2	15-Apr-21	chum	435	40	0.8	0	0	0	0	0	0	0	0	0	0	0	0	0	0	0	0	0	0	0
14	2	15-Apr-21	chum	436	34	0.6	0	0	0	0	0	0	0	0	0	0	0	0	0	0	0	0	0	0	0
14	2	15-Apr-21	chum	437	38	0.8	0	0	0	0	0	0	0	0	0	0	0	0	0	0	0	0	0	0	0
14	2	15-Apr-21	chum	438	35	0.6	0	0	0	0	0	0	0	0	0	0	0	0	0	0	0	0	0	0	0
14	2	15-Apr-21	chum	439	32	0.4	0	0	0	0	0	0	0	0	0	0	0	0	0	0	0	0	0	0	0
14	2	15-Apr-21	chum	440	42	1.0	0	0	0	0	0	0	0	0	0	0	0	0	0	0	0	0	0	0	0

SITE	WEEK	DATE COLLECTED	FISH SPECIES	FISH NUMBER	LENGTH IN MM	WEIGHT IN G	LEP Co	LEP C1	LEP C2	LEP PAM	LEP PAF	LEP AM	LEP AF	CAL Co	CAL C1	CAL C2	CAL C3	CAL C4	CAL PAM	CAL_PAF	CAL AM	CAL AF	TOT LICE ID	TOT LEP	TOT CAL
14	2	15-Apr-21	chum	441	33	0.4	0	0	0	0	0	0	0	0	0	0	0	0	0	0	0	0	0	0	0
14	2	15-Apr-21	chum	442	39	0.8	0	0	0	0	0	0	0	0	0	0	0	0	0	0	0	0	0	0	0
2	3	28-Apr-21	chum	251	38	0.7	0	0	0	0	0	0	0	0	0	0	0	0	0	0	0	0	0	0	0
2	3	28-Apr-21	chum	252	33	0.4	0	0	0	0	0	0	0	0	0	0	0	0	0	0	0	0	0	0	0
3	3	28-Apr-21	chum	168	34	0.3	0	0	0	0	0	0	0	0	0	0	0	0	0	0	0	0	0	0	0
3	3	28-Apr-21	chum	169	35	0.5	0	0	0	0	0	0	0	0	0	0	0	0	0	0	0	0	0	0	0
3	3	28-Apr-21	chum	170	43	1.0	0	0	0	0	0	0	0	0	0	0	0	0	0	0	0	0	0	0	0
3	3	28-Apr-21	chum	171	41	0.9	0	0	0	0	0	0	0	0	0	0	0	0	0	0	0	0	0	0	0
3	3	28-Apr-21	chum	172	34	0.6	0	0	0	0	0	0	0	0	0	0	0	0	0	0	0	0	0	0	0
3	3	28-Apr-21	chum	173	41	0.9	0	0	0	0	0	0	0	0	0	0	0	0	0	0	0	0	0	0	0
3	3	28-Apr-21	chum	174	50	1.9	0	0	0	0	0	0	0	0	0	0	0	0	0	0	0	0	0	0	0
3	3	28-Apr-21	chum	175	36	0.6	0	0	0	0	0	0	0	0	0	0	0	0	0	0	0	0	0	0	0
3	3	28-Apr-21	chum	176	38	0.8	0	0	0	0	0	0	0	0	0	0	0	0	0	0	0	0	0	0	0
3	3	28-Apr-21	chum	177	33	0.4	0	0	0	0	0	0	0	0	0	0	0	0	0	0	0	0	0	0	0
3	3	28-Apr-21	chum	178	48	1.5	0	0	0	0	0	0	0	0	0	0	0	0	0	0	0	0	0	0	0
3	3	28-Apr-21	chum	179	51	2.2	0	0	0	0	0	0	0	0	0	0	0	0	0	0	0	0	0	0	0
3	3	28-Apr-21	chum	180	41	1.0	0	0	0	0	0	0	0	0	0	0	0	0	0	0	0	0	0	0	0
3	3	28-Apr-21	chum	181	40	0.9	0	0	0	0	0	0	0	0	0	0	0	0	0	0	0	0	0	0	0
3	3	28-Apr-21	chum	182	42	0.9	0	0	0	0	0	0	0	0	0	0	0	0	0	0	0	0	0	0	0
3	3	28-Apr-21	chum	183	33	0.4	0	0	0	0	0	0	0	0	0	0	0	0	0	0	0	0	0	0	0
3	3	28-Apr-21	chum	184	42	1.0	0	0	0	0	0	0	0	0	0	0	0	0	0	0	0	0	0	0	0
3	3	28-Apr-21	chum	185	33	0.5	0	0	0	0	0	0	0	0	0	0	0	0	0	0	0	0	0	0	0
3	3	28-Apr-21	chum	186	42	1.1	0	0	0	0	0	0	0	0	0	0	0	0	0	0	0	0	0	0	0
3	3	28-Apr-21	chum	187	39	0.7	0	0	0	0	0	0	0	0	0	0	0	0	0	0	0	0	0	0	0
3	3	28-Apr-21	chum	188	44	1.1	0	0	0	0	0	0	0	0	0	0	0	0	0	0	0	0	0	0	0
3	3	28-Apr-21	chum	189	40	0.9	0	0	0	0	0	0	0	0	0	0	0	0	0	0	0	0	0	0	0
3	3	28-Apr-21	chum	190	35	0.6	0	0	0	0	0	0	0	0	0	0	0	0	0	0	0	0	0	0	0
3	3	28-Apr-21	chum	191	40	0.9	0	0	0	0	0	0	0	0	0	0	0	0	0	0	0	0	0	0	0
3	3	28-Apr-21	chum	192	35	0.6	0	0	0	0	0	0	0	0	0	0	0	0	0	0	0	0	0	0	0
3	3	28-Apr-21	chum	193	43	1.2	0	0	0	0	1	0	0	0	0	0	0	0	0	0	0	0	0	1	0
3	3	28-Apr-21	chum	194	43	1.2	0	0	0	0	0	0	0	0	0	0	0	0	0	0	0	0	0	0	0
3	3	28-Apr-21	chum	195	34	0.5	0	0	0	0	0	0	0	0	0	0	0	0	0	0	0	0	0	0	0
3	3	28-Apr-21	chum	196	37	0.7	0	0	0	0	0	0	0	0	0	0	0	0	0	0	0	0	0	0	0
4	3	28-Apr-21	chum	339	34	0.3	0	0	0	0	0	0	0	0	0	0	0	0	0	0	0	0	0	0	0
4	3	28-Apr-21	chum	340	40	0.7	0	0	0	0	0	0	0	0	0	0	0	0	0	0	0	0	0	0	0
4	3	28-Apr-21	chum	341	36	0.5	0	0	0	0	0	0	0	0	0	0	0	0	0	0	0	0	0	0	0
5	3	28-Apr-21	chum	197	40	0.8	0	0	0	0	0	0	0	0	0	0	0	0	0	0	0	0	0	0	0
5	3	28-Apr-21	chum	198	43	0.7	0	0	0	0	0	0	0	0	0	0	0	0	0	0	0	0	0	0	0
5	3	28-Apr-21	chum	199	42	0.8	0	0	0	0	0	0	0	0	0	0	0	0	0	0	0	0	0	0	0
5	3	28-Apr-21	chum	200	38	0.5	0	0	0	0	0	0	0	0	0	0	0	0	0	0	0	0	0	0	0
5	3	28-Apr-21	chum	201	45	1.2	0	0	0	0	0	0	0	0	0	0	0	0	0	0	0	0	0	0	0
5	3	28-Apr-21	chum	202	47	1.3	0	0	0	0	0	0	0	0	0	0	0	0	1	0	0	0	1	0	1
5	3	28-Apr-21	chum	203	43	0.9	0	0	0	0	0	0	0	0	0	0	0	0	0	0	0	0	0	0	0
5	3	28-Apr-21	chum	204	45	1.1	0	0	0	0	0	0	0	0	0	0	0	0	0	0	0	0	0	0	0
5	3	28-Apr-21	chum	205	40	0.7	0	0	0	0	0	0	0	0	0	0	0	0	0	0	0	0	0	0	0
5	3	28-Apr-21	chum	206	40	0.7	0	0	0	0	0	0	0	0	0	0	0	0	0	0	0	0	0	0	0

SITE	WEEK	DATE COLLECTED	FISH SPECIES	FISH NUMBER	LENGTH IN MM	WEIGHT IN G	LEP Co	LEP C1	LEP C2	LEP PAM	LEP PAF	LEP AM	LEP AF	CAL Co	CAL C1	CAL C2	CAL C3	CAL C4	CAL PAM	CAL_PAF	CAL AM	CAL AF	TOT LICE ID	TOT LEP	TOT CAL
5	3	28-Apr-21	chum	207	40	0.8	0	0	0	0	0	0	0	0	0	0	0	0	0	0	0	0	0	0	0
5	3	28-Apr-21	chum	208	63	2.6	0	0	0	1	0	1	0	0	0	0	0	0	0	0	0	0	2	2	0
5	3	28-Apr-21	chum	209	48	1.3	0	0	0	0	0	0	0	0	0	0	0	0	0	0	0	0	0	0	0
5	3	28-Apr-21	chum	210	39	0.8	0	0	0	0	0	0	0	0	0	0	0	0	0	0	0	0	0	0	0
5	3	28-Apr-21	chum	211	43	0.9	0	0	0	0	0	0	0	0	0	0	0	0	0	0	0	0	0	0	0
5	3	28-Apr-21	chum	212	37	0.5	0	0	0	0	0	0	0	0	0	0	0	0	0	0	0	0	0	0	0
5	3	28-Apr-21	chum	213	44	1.0	0	0	0	0	0	0	0	0	0	0	0	0	0	0	0	0	0	0	0
5	3	28-Apr-21	chum	214	43	0.9	0	0	0	0	0	0	0	0	0	0	0	0	0	0	0	0	0	0	0
5	3	28-Apr-21	chum	215	40	0.7	0	0	0	0	0	0	0	0	0	0	0	0	0	0	0	0	0	0	0
5	3	28-Apr-21	chum	216	35	0.6	0	0	0	0	0	0	0	0	0	0	0	0	0	0	0	0	0	0	0
5	3	28-Apr-21	chum	217	43	0.9	0	0	0	0	0	0	0	0	0	0	0	0	0	0	0	0	0	0	0
5	3	28-Apr-21	chum	218	48	1.3	0	0	0	0	0	0	0	0	0	0	0	0	0	0	0	0	0	0	0
5	3	28-Apr-21	chum	219	38	0.5	0	0	0	0	0	0	0	0	0	0	0	0	0	0	0	0	0	0	0
5	3	28-Apr-21	chum	220	40	0.7	0	0	0	0	0	0	0	0	0	0	0	0	0	0	0	0	0	0	0
5	3	28-Apr-21	chum	221	42	0.9	0	0	0	0	0	0	0	0	0	0	0	0	0	0	0	0	0	0	0
5	3	28-Apr-21	chum	222	39	0.6	0	0	0	0	0	0	0	0	0	0	0	0	0	0	0	0	0	0	0
5	3	28-Apr-21	chum	223	49	1.3	0	0	0	0	0	0	0	0	0	0	0	0	0	0	0	0	0	0	0
5	3	28-Apr-21	chum	224	45	1.0	0	0	0	0	0	0	0	0	0	0	0	0	0	0	0	0	0	0	0
5	3	28-Apr-21	chum	225	41	0.7	0	0	0	0	0	0	0	0	0	0	0	0	0	0	0	0	0	0	0
5	3	28-Apr-21	chum	226	44	1.0	0	0	0	0	0	0	0	0	0	0	0	0	0	0	0	0	0	0	0
6	3	28-Apr-21	chum	616	38	0.7	0	0	1	0	0	0	0	0	0	0	0	0	0	0	0	0	1	1	0
6	3	28-Apr-21	chum	617	39	0.8	0	0	0	0	0	0	0	0	0	0	0	0	0	0	0	0	0	0	0
6	3	28-Apr-21	chum	618	41	0.9	0	0	0	0	0	0	0	0	0	0	0	0	0	0	0	0	0	0	0
6	3	28-Apr-21	chum	619	37	0.6	0	0	0	0	0	0	0	0	0	0	0	0	0	0	0	0	0	0	0
6	3	28-Apr-21	chum	620	39	0.7	2	0	0	0	0	0	0	0	0	0	0	0	0	0	0	0	2	2	0
6	3	28-Apr-21	chum	621	33	0.5	1	0	0	0	0	0	0	0	0	0	0	0	0	0	0	0	1	1	0
6	3	28-Apr-21	chum	622	36	0.5	0	0	0	0	0	0	0	0	0	0	0	0	0	0	0	0	0	0	0
6	3	28-Apr-21	chum	623	35	0.5	0	0	0	0	0	0	0	0	0	0	0	0	0	0	0	0	0	0	0
6	3	28-Apr-21	chum	624	31	0.7	0	0	0	0	0	0	0	0	0	0	0	0	0	0	0	0	0	0	0
6	3	28-Apr-21	chum	625	36	0.6	0	0	0	0	0	0	0	0	0	0	0	0	0	0	0	0	0	0	0
6	3	28-Apr-21	chum	626	34	0.5	0	0	0	0	0	0	0	0	0	0	0	0	0	0	0	0	0	0	0
6	3	28-Apr-21	chum	627	36	0.6	0	0	0	0	0	0	0	0	0	0	0	0	0	0	0	0	0	0	0
6	3	28-Apr-21	chum	628	39	0.7	0	1	0	0	0	0	0	0	0	0	0	0	0	0	0	0	1	1	0
6	3	28-Apr-21	chum	629	37	0.8	0	0	0	0	0	0	0	0	0	0	0	0	0	0	0	0	0	0	0
6	3	28-Apr-21	chum	630	37	0.7	0	1	0	0	0	0	0	0	0	0	0	0	0	0	0	0	1	1	0
6	3	28-Apr-21	chum	631	38	0.7	0	0	0	0	0	0	0	0	0	0	0	0	0	0	0	0	0	0	0
6	3	28-Apr-21	chum	632	36	0.6	0	0	0	0	0	0	0	0	0	0	0	0	0	0	0	0	0	0	0
6	3	28-Apr-21	chum	633	39	0.7	0	0	0	0	0	0	0	0	0	0	0	0	0	0	0	0	0	0	0
6	3	28-Apr-21	chum	634	39	0.8	0	0	0	0	0	0	0	0	0	0	0	0	0	0	0	0	0	0	0
6	3	28-Apr-21	chum	635	35	0.5	0	0	0	0	0	0	0	0	0	0	0	0	0	0	0	0	0	0	0
6	3	28-Apr-21	chum	636	37	0.7	0	0	0	0	0	0	0	0	0	0	0	0	0	0	0	0	0	0	0
6	3	28-Apr-21	chum	637	34	0.6	0	0	0	0	0	0	0	0	0	0	0	0	0	0	0	0	0	0	0
6	3	28-Apr-21	chum	638	34	0.5	0	0	0	0	0	0	0	0	0	0	0	0	0	0	0	0	0	0	0
6	3	28-Apr-21	chum	639	34	0.5	2	0	0	0	0	0	0	0	0	0	0	0	0	0	0	0	2	2	0
6	3	28-Apr-21	chum	640	38	0.7	0	0	0	0	0	0	0	0	0	0	0	0	0	0	0	0	0	0	0
6	3	28-Apr-21	chum	641	35	0.6	0	0	0	0	0	0	0	0	0	0	0	0	0	0	0	0	0	0	0

SITE	WEEK	DATE COLLECTED	FISH SPECIES	FISH NUMBER	LENGTH IN MM	WEIGHT IN G	LEP Co	LEP C1	LEP C2	LEP PAM	LEP PAF	LEP AM	LEP AF	CAL Co	CAL C1	CAL C2	CAL C3	CAL C4	CAL PAM	CAL_PAF	CAL AM	CAL AF	TOT LICE ID	TOT LEP	TOT CAL
6	3	28-Apr-21	chum	642	36	0.6	0	0	0	0	0	0	0	0	0	0	0	0	0	0	0	0	0	0	0
6	3	28-Apr-21	chum	643	42	1.1	0	0	0	0	0	0	0	0	0	0	0	0	0	0	0	0	0	0	0
7	3	28-Apr-21	chum	156	35	0.7	0	1	0	0	0	0	0	0	0	0	0	0	0	0	0	0	1	1	0
7	3	28-Apr-21	chum	157	37	0.8	0	0	0	0	0	0	0	0	0	0	0	0	0	0	0	0	0	0	0
7	3	28-Apr-21	chum	158	34	0.6	0	0	0	0	0	0	0	0	0	0	0	0	0	0	0	0	0	0	0
7	3	28-Apr-21	chum	159	36	0.7	0	0	0	0	0	0	0	0	0	0	0	0	0	0	0	0	0	0	0
7	3	28-Apr-21	chum	160	35	0.7	0	0	0	0	0	0	0	0	0	0	0	0	0	0	0	0	0	0	0
7	3	28-Apr-21	chum	161	36	0.7	0	0	0	0	0	0	0	0	0	0	0	0	0	0	0	0	0	0	0
8	3	29-Apr-21	chum	644	37	0.7	0	0	0	0	0	0	0	0	0	0	0	0	0	0	0	0	0	0	0
8	3	29-Apr-21	chum	645	35	0.5	0	0	0	0	0	0	0	0	0	0	0	0	0	0	0	0	0	0	0
8	3	29-Apr-21	chum	646	34	0.5	0	0	0	0	0	0	0	0	0	0	0	0	0	0	0	0	0	0	0
8	3	29-Apr-21	chum	647	35	0.6	0	0	0	0	0	0	0	0	0	0	0	0	0	0	0	0	0	0	0
8	3	29-Apr-21	chum	648	37	0.6	0	0	0	0	0	0	0	0	0	0	0	0	0	0	0	0	0	0	0
8	3	29-Apr-21	chum	649	35	0.6	0	0	0	0	0	0	0	0	0	0	0	0	0	0	0	0	0	0	0
8	3	29-Apr-21	chum	650	34	0.5	0	0	0	0	0	0	0	0	0	0	0	0	0	0	0	0	0	0	0
8	3	29-Apr-21	chum	651	35	0.6	0	0	0	0	0	0	0	0	0	0	0	0	0	0	0	0	0	0	0
8	3	29-Apr-21	chum	652	34	0.4	0	0	0	0	0	0	0	0	0	0	0	0	0	0	0	0	0	0	0
8	3	29-Apr-21	chum	653	35	0.5	0	0	0	0	0	0	0	0	0	0	0	0	0	0	0	0	0	0	0
8	3	29-Apr-21	chum	654	35	0.6	0	0	0	0	0	0	0	0	0	0	0	0	0	0	0	0	0	0	0
8	3	29-Apr-21	chum	655	33	0.5	0	0	0	0	0	0	0	0	0	0	0	0	0	0	0	0	0	0	0
8	3	29-Apr-21	chum	656	34	0.4	0	0	0	0	0	0	0	0	0	0	0	0	0	0	0	0	0	0	0
8	3	29-Apr-21	chum	657	35	0.5	0	0	0	0	0	0	0	0	0	0	0	0	0	0	0	0	0	0	0
8	3	29-Apr-21	chum	658	33	0.4	0	0	0	0	0	0	0	0	0	0	0	0	0	0	0	0	0	0	0
9	3	29-Apr-21	chum	153	36	0.6	0	0	0	0	0	0	0	0	0	0	0	0	0	0	0	0	0	0	0
12	3	29-Apr-21	chum	162	35	0.4	0	0	0	0	0	0	0	0	0	0	0	0	0	0	0	0	0	0	0
12	3	29-Apr-21	chum	163	36	0.6	0	0	1	0	0	0	0	0	0	0	0	0	0	0	0	0	1	1	0
13	3	29-Apr-21	chum	227	34	0.5	0	0	0	0	0	0	0	0	0	0	0	0	0	0	0	0	0	0	0
13	3	29-Apr-21	chum	228	33	0.4	0	0	0	0	0	0	0	0	0	0	0	0	0	0	0	0	0	0	0
13	3	29-Apr-21	chum	229	35	0.5	0	0	0	0	0	0	0	0	0	0	0	0	0	0	0	0	0	0	0
13	3	29-Apr-21	chum	230	32	0.4	0	0	0	0	0	0	0	0	0	0	0	0	0	0	0	0	0	0	0
13	3	29-Apr-21	chum	231	31	0.3	0	0	0	0	0	0	0	0	0	0	0	0	0	0	0	0	0	0	0
13	3	29-Apr-21	chum	232	34	0.5	0	0	0	0	0	0	0	0	0	0	0	0	0	0	0	0	0	0	0
13	3	29-Apr-21	chum	233	32	0.3	0	0	0	0	0	0	0	0	0	0	0	0	0	0	0	0	0	0	0
13	3	29-Apr-21	chum	234	33	0.5	0	0	0	0	0	0	0	0	0	0	0	0	0	0	0	0	0	0	0
13	3	29-Apr-21	chum	235	33	0.4	0	0	0	0	0	0	0	0	0	0	0	0	0	0	0	0	0	0	0
13	3	29-Apr-21	chum	236	35	0.5	0	0	0	0	0	0	0	0	0	0	0	0	0	0	0	0	0	0	0
13	3	29-Apr-21	chum	237	34	0.6	0	0	0	0	0	0	0	0	0	0	0	0	0	0	0	0	0	0	0
13	3	29-Apr-21	chum	238	34	0.5	0	0	0	0	0	0	0	0	0	0	0	0	0	0	0	0	0	0	0
13	3	29-Apr-21	chum	239	32	0.3	0	0	0	0	0	0	0	0	0	0	0	0	0	0	0	0	0	0	0
13	3	29-Apr-21	chum	240	31	0.4	0	0	0	0	0	0	0	0	0	0	0	0	0	0	0	0	0	0	0
13	3	29-Apr-21	chum	241	33	0.4	0	0	0	0	0	0	0	0	0	0	0	0	0	0	0	0	0	0	0
13	3	29-Apr-21	chum	242	34	0.4	0	0	0	0	0	0	0	0	0	0	0	0	0	0	0	0	0	0	0
13	3	29-Apr-21	chum	243	33	0.4	0	0	0	0	0	0	0	0	0	0	0	0	0	0	0	0	0	0	0
13	3	29-Apr-21	chum	244	31	0.4	0	0	0	0	0	0	0	0	0	0	0	0	0	0	0	0	0	0	0
13	3	29-Apr-21	chum	245	35	0.6	0	0	0	0	0	0	0	0	0	0	0	0	0	0	0	0	0	0	0
13	3	29-Apr-21	chum	246	32	0.4	0	0	0	0	0	0	0	0	0	0	0	0	0	0	0	0	0	0	0

SITE	WEEK	DATE COLLECTED	FISH SPECIES	FISH NUMBER	LENGTH IN MM	WEIGHT IN G	LEP Co	LEP C1	LEP C2	LEP PAM	LEP PAF	LEP AM	LEP AF	CAL Co	CAL C1	CAL C2	CAL C3	CAL C4	CAL PAM	CAL_PAF	CAL AM	CAL AF	TOT LICE ID	TOT LEP	TOT CAL
13	3	29-Apr-21	chum	247	32	0.4	0	0	0	0	0	0	0	0	0	0	0	0	0	0	0	0	0	0	0
13	3	29-Apr-21	chum	248	34	0.5	0	0	0	0	0	0	0	0	0	0	0	0	0	0	0	0	0	0	0
13	3	29-Apr-21	chum	249	33	0.4	0	0	0	0	0	0	0	0	0	0	0	0	0	0	0	0	0	0	0
13	3	29-Apr-21	chum	250	29	0.3	0	0	0	0	0	0	0	0	0	0	0	0	0	0	0	0	0	0	0
14	3	29-Apr-21	chum	503	43	0.9	0	0	0	0	0	0	0	0	0	0	0	0	0	0	0	0	0	0	0
14	3	29-Apr-21	chum	504	44	1.0	0	0	0	0	0	0	0	0	0	0	0	0	0	0	0	0	0	0	0
14	3	29-Apr-21	chum	505	41	0.9	0	0	0	0	0	0	0	0	0	0	0	0	0	0	0	0	0	0	0
14	3	29-Apr-21	chum	506	47	1.3	1	0	0	0	0	0	0	0	0	0	0	0	0	0	0	0	1	1	0
14	3	29-Apr-21	chum	507	42	1.0	0	0	0	0	0	0	0	0	0	0	0	0	0	0	0	0	0	0	0
14	3	29-Apr-21	chum	508	41	0.8	0	0	0	0	0	0	0	0	0	0	0	0	0	0	0	0	0	0	0
14	3	29-Apr-21	chum	509	41	0.9	1	0	0	0	0	0	0	0	0	0	0	0	0	0	0	0	1	1	0
14	3	29-Apr-21	chum	510	38	0.6	0	0	0	0	0	0	0	0	0	0	0	0	0	0	0	0	0	0	0
14	3	29-Apr-21	chum	511	37	0.6	0	0	0	0	0	0	0	0	0	0	0	0	0	0	0	0	0	0	0
14	3	29-Apr-21	chum	512	40	0.8	1	0	0	0	0	0	0	0	0	0	0	0	0	0	0	0	1	1	0
14	3	29-Apr-21	chum	513	40	0.9	0	0	0	0	0	0	0	0	0	0	0	0	0	0	0	0	0	0	0
14	3	29-Apr-21	chum	514	44	1.0	0	0	0	0	0	0	0	0	0	0	0	0	0	0	0	0	0	0	0
14	3	29-Apr-21	chum	515	38	0.7	0	0	0	0	0	0	0	0	0	0	0	0	0	0	0	0	0	0	0
14	3	29-Apr-21	chum	516	37	0.6	0	0	0	0	0	0	0	0	0	0	0	0	0	0	0	0	0	0	0
14	3	29-Apr-21	chum	517	43	1.0	0	0	0	0	0	0	0	0	0	0	0	0	0	0	0	0	0	0	0
14	3	29-Apr-21	chum	518	36	0.5	0	0	0	0	0	0	0	0	0	0	0	0	0	0	0	0	0	0	0
14	3	29-Apr-21	chum	519	38	0.6	0	0	0	0	0	0	0	0	0	0	0	0	0	0	0	0	0	0	0
15	3	29-Apr-21	chum	154	34	0.4	0	0	0	0	0	0	0	0	0	0	0	0	0	0	0	0	0	0	0
15	3	29-Apr-21	chum	155	35	0.4	0	0	0	0	0	0	0	0	0	0	0	0	0	0	0	0	0	0	0
1	4	12-May-21	chum	164	43	1.1	0	0	0	0	0	0	0	0	0	0	0	0	0	0	0	0	0	0	0
1	4	12-May-21	chum	165	39	0.9	0	0	0	0	0	0	0	0	0	0	0	0	0	0	0	0	0	0	0
1	4	12-May-21	chum	166	38	0.8	0	0	0	0	0	0	0	0	0	0	0	0	0	0	0	0	0	0	0
1	4	12-May-21	chum	167	40	0.9	0	0	0	0	0	0	0	0	0	0	0	0	0	0	0	0	0	0	0
2	4	12-May-21	chum	8	38	0.7	0	0	0	0	0	0	0	0	0	0	0	0	0	0	0	0	0	0	0
2	4	12-May-21	coho	9	86	8.0	2	0	0	0	0	0	0	0	0	0	0	0	0	0	0	0	2	2	0
3	4	12-May-21	chum	105	36	0.7	0	0	0	0	0	0	0	0	0	0	0	0	0	0	0	0	0	0	0
3	4	12-May-21	chum	106	35	0.5	0	0	0	0	0	0	0	0	0	0	0	0	0	0	0	0	0	0	0
3	4	12-May-21	chum	107	34	0.4	0	0	0	0	0	0	0	0	0	0	0	0	0	0	0	0	0	0	0
3	4	12-May-21	chum	108	34	0.5	0	0	0	0	0	0	0	0	0	0	0	0	0	0	0	0	0	0	0
3	4	12-May-21	chum	109	35	0.6	0	0	0	0	0	0	0	0	0	0	0	0	0	0	0	0	0	0	0
3	4	12-May-21	chum	110	34	0.5	0	0	0	0	0	0	0	0	0	0	0	0	0	0	0	0	0	0	0
3	4	12-May-21	chum	111	34	0.6	0	0	0	0	0	0	0	0	0	0	0	0	0	0	0	0	0	0	0
3	4	12-May-21	chum	112	35	0.5	0	0	0	0	0	0	0	0	0	0	0	0	0	0	0	0	0	0	0
3	4	12-May-21	chum	113	37	0.7	0	0	0	0	0	0	0	0	0	0	0	0	0	0	0	0	0	0	0
3	4	12-May-21	chum	114	34	0.4	0	0	0	0	0	0	0	0	0	0	0	0	0	0	0	0	0	0	0
3	4	12-May-21	chum	115	38	0.7	0	0	0	0	0	0	0	0	0	0	0	0	0	0	0	0	0	0	0
3	4	12-May-21	chum	116	35	0.5	0	0	1	0	0	0	0	0	0	0	0	0	0	0	0	0	1	1	0
3	4	12-May-21	chum	117	34	0.5	0	0	0	0	0	0	0	0	0	0	0	0	0	0	0	0	0	0	0
3	4	12-May-21	chum	118	40	0.7	0	0	0	0	0	0	0	0	0	0	0	0	0	0	0	0	0	0	0
3	4	12-May-21	chum	119	33	0.5	0	0	0	0	0	0	0	0	0	0	0	0	0	0	0	0	0	0	0
3	4	12-May-21	chum	120	32	0.4	0	0	0	0	0	0	0	0	0	0	0	0	0	0	0	0	0	0	0
3	4	12-May-21	chum	121	34	0.5	0	0	0	0	0	0	0	0	0	0	0	0	0	0	0	0	0	0	0

SITE	WEEK	DATE COLLECTED	FISH SPECIES	FISH NUMBER	LENGTH IN MM	WEIGHT IN G	LEP Co	LEP C1	LEP C2	LEP PAM	LEP PAF	LEP AM	LEP AF	CAL Co	CAL C1	CAL C2	CAL C3	CAL C4	CAL PAM	CAL_PAF	CAL AM	CAL AF	TOT LICE ID	TOT LEP	TOT CAL
3	4	12-May-21	chum	122	39	0.7	0	0	0	1	0	0	0	0	0	0	0	0	0	0	0	0	1	1	0
3	4	12-May-21	chum	123	46	1.3	0	0	0	1	0	0	0	0	0	0	0	0	0	0	0	0	1	1	0
3	4	12-May-21	chum	124	35	0.5	0	0	0	0	0	0	0	0	0	0	0	0	0	0	0	0	0	0	0
3	4	12-May-21	chum	125	36	0.6	0	0	0	0	0	0	0	0	0	0	0	0	0	0	0	0	0	0	0
3	4	12-May-21	chum	126	34	0.5	0	0	0	0	0	0	0	0	0	0	0	0	0	0	0	0	0	0	0
3	4	12-May-21	chum	127	35	0.6	0	0	0	0	0	0	0	0	0	0	0	0	0	0	0	0	0	0	0
3	4	12-May-21	chum	128	34	0.5	0	0	0	0	0	0	0	0	0	0	0	0	0	0	0	0	0	0	0
3	4	12-May-21	chum	129	34	0.5	0	0	0	0	0	0	0	0	0	0	0	0	0	0	0	0	0	0	0
3	4	12-May-21	chum	130	37	0.8	0	0	0	0	0	0	0	0	0	0	0	0	0	0	0	0	0	0	0
3	4	12-May-21	chum	131	35	0.6	0	0	0	0	0	0	0	0	0	0	0	0	0	0	0	0	0	0	0
3	4	12-May-21	chum	132	39	0.8	0	0	0	0	0	0	0	0	0	0	0	0	0	0	0	0	0	0	0
3	4	12-May-21	chum	133	37	0.7	0	0	0	0	0	0	0	0	0	0	0	0	0	0	0	0	0	0	0
3	4	12-May-21	chum	134	34	0.5	0	0	0	0	0	0	0	0	0	0	0	0	0	0	0	0	0	0	0
4	4	12-May-21	chum	47	37	0.7	0	0	0	0	0	0	0	0	0	0	0	0	0	0	0	0	0	0	0
4	4	12-May-21	chum	48	34	0.5	0	0	0	0	0	0	0	0	0	0	0	0	0	0	0	0	0	0	0
4	4	12-May-21	chum	49	39	0.8	0	0	0	0	0	0	0	0	0	0	0	0	0	0	0	1	1	0	1
4	4	12-May-21	chum	50	48	1.6	0	0	0	0	0	0	0	0	0	0	0	0	0	1	0	0	1	0	1
4	4	12-May-21	chum	51	39	0.7	0	0	0	0	0	0	0	0	0	0	0	0	0	0	0	0	0	0	0
4	4	12-May-21	chum	52	35	0.6	0	0	0	0	0	0	0	0	0	0	0	0	0	0	0	0	0	0	0
4	4	12-May-21	chum	53	34	0.5	0	0	0	0	0	0	0	0	0	0	0	0	0	0	0	0	0	0	0
4	4	12-May-21	chum	54	42	1.0	0	0	0	0	0	0	0	0	0	0	0	0	0	0	0	0	0	0	0
4	4	12-May-21	chum	55	33	0.5	0	0	0	0	0	0	0	0	0	0	0	0	0	0	0	0	0	0	0
4	4	12-May-21	chum	56	35	0.5	0	0	0	0	0	0	0	0	0	0	0	0	0	0	0	0	0	0	0
4	4	12-May-21	chum	57	39	0.8	0	0	0	0	0	0	0	0	0	0	0	0	0	0	0	0	0	0	0
4	4	12-May-21	chum	58	34	0.5	0	0	0	0	0	0	0	0	0	0	0	0	0	0	0	0	0	0	0
5	4	12-May-21	chum	59	40	0.9	0	0	0	0	0	0	0	0	0	0	0	0	0	0	0	0	0	0	0
5	4	12-May-21	chum	60	44	0.9	0	0	0	0	0	0	0	0	0	0	0	0	0	0	0	0	0	0	0
5	4	12-May-21	chum	61	39	0.8	0	0	0	0	0	0	0	0	0	0	0	0	0	0	0	0	0	0	0
5	4	12-May-21	chum	62	33	0.4	0	0	0	0	0	0	0	0	0	0	0	0	0	0	0	0	0	0	0
5	4	12-May-21	chum	63	36	0.7	0	0	0	0	0	0	0	0	0	0	0	0	0	0	0	0	0	0	0
5	4	12-May-21	chum	64	35	0.5	0	0	0	0	0	0	0	0	0	0	0	0	0	0	0	0	0	0	0
5	4	12-May-21	chum	65	35	0.5	0	0	0	0	0	0	0	0	0	0	0	0	0	0	0	0	0	0	0
5	4	12-May-21	chum	66	34	0.5	0	0	0	0	0	0	0	0	0	0	0	0	0	0	0	0	0	0	0
5	4	12-May-21	chum	67	32	0.4	0	0	0	0	0	0	0	0	0	0	0	0	0	0	0	0	0	0	0
5	4	12-May-21	chum	68	52	2.0	0	0	0	0	0	0	0	0	0	0	0	0	0	1	0	0	1	0	1
5	4	12-May-21	chum	69	36	0.7	0	0	0	0	0	0	0	0	0	0	0	0	0	0	0	0	0	0	0
5	4	12-May-21	chum	70	34	0.5	0	0	0	0	0	0	0	0	0	0	0	0	0	0	0	0	0	0	0
5	4	12-May-21	chum	71	40	0.8	0	0	0	0	0	0	0	0	0	0	0	0	0	0	0	0	0	0	0
5	4	12-May-21	chum	72	35	0.5	0	0	0	0	0	0	0	0	0	0	0	0	0	0	0	0	0	0	0
5	4	12-May-21	chum	73	32	0.4	0	0	0	0	0	0	0	0	0	0	0	0	0	0	0	0	0	0	0
5	4	12-May-21	chum	74	34	0.4	0	0	0	0	0	0	0	0	0	0	0	0	0	0	0	0	0	0	0
5	4	12-May-21	chum	75	34	0.5	0	0	0	0	0	0	0	0	0	0	0	0	0	0	0	0	0	0	0
5	4	12-May-21	chum	76	35	0.6	0	0	0	0	0	0	0	0	0	0	0	0	0	0	0	0	0	0	0
5	4	12-May-21	chum	77	34	0.5	0	0	0	0	0	0	0	0	0	0	0	0	0	0	0	0	0	0	0
5	4	12-May-21	chum	78	36	0.5	1	0	0	0	0	0	0	0	0	0	0	0	0	0	0	0	1	1	0
5	4	12-May-21	chum	79	34	0.6	0	0	0	0	0	0	0	0	0	0	0	0	0	0	0	0	0	0	0

SITE	WEEK	DATE COLLECTED	FISH SPECIES	FISH NUMBER	LENGTH IN MM	WEIGHT IN G	LEP Co	LEP C1	LEP C2	LEP PAM	LEP PAF	LEP AM	LEP AF	CAL Co	CAL C1	CAL C2	CAL C3	CAL C4	CAL PAM	CAL_PAF	CAL AM	CAL AF	TOT LICE ID	TOT LEP	TOT CAL
5	4	12-May-21	chum	80	34	0.4	1	0	0	0	0	0	0	0	0	0	0	0	0	0	0	0	1	1	0
5	4	12-May-21	chum	81	33	0.4	0	0	0	0	0	0	0	0	0	0	0	0	0	0	0	0	0	0	0
5	4	12-May-21	chum	82	35	0.6	0	0	0	0	0	0	0	0	0	0	0	0	0	0	0	0	0	0	0
5	4	12-May-21	chum	83	33	0.5	0	0	0	0	0	0	0	0	0	0	0	0	0	0	0	0	0	0	0
5	4	12-May-21	chum	84	33	0.4	0	0	0	0	0	0	0	0	0	0	0	0	0	0	0	0	0	0	0
5	4	12-May-21	chum	85	34	0.5	0	0	0	0	0	0	0	0	0	0	0	0	0	0	0	0	0	0	0
5	4	12-May-21	chum	86	32	0.4	0	0	0	0	0	0	0	0	0	0	0	0	0	0	0	0	0	0	0
5	4	12-May-21	chum	87	34	0.5	0	0	0	0	0	0	0	0	0	0	0	0	0	0	0	0	0	0	0
5	4	12-May-21	chum	88	33	0.4	0	0	0	0	0	0	0	0	0	0	0	0	0	0	0	0	0	0	0
6	4	12-May-21	chum	89	35	0.6	0	0	0	0	0	0	0	0	0	0	0	0	0	0	0	0	0	0	0
6	4	12-May-21	chum	90	36	0.6	0	0	0	0	0	0	0	0	0	0	0	0	0	0	0	0	0	0	0
6	4	12-May-21	chum	91	35	0.6	0	0	0	0	0	0	0	0	0	0	0	0	0	0	0	0	0	0	0
6	4	12-May-21	chum	92	34	0.5	0	0	0	0	0	0	0	0	0	0	0	0	0	0	0	0	0	0	0
6	4	12-May-21	chum	93	36	0.5	0	0	0	0	0	0	0	0	0	0	0	0	0	0	0	0	0	0	0
6	4	12-May-21	chum	94	46	1.3	0	0	0	0	0	0	0	0	0	0	0	0	0	0	0	0	0	0	0
6	4	12-May-21	chum	95	34	0.5	0	0	0	0	0	0	0	0	0	0	0	0	0	0	0	0	0	0	0
6	4	12-May-21	chum	96	36	0.6	0	0	0	0	0	0	0	0	0	0	0	0	0	0	0	0	0	0	0
6	4	12-May-21	chum	97	40	0.9	0	0	0	0	0	0	0	0	0	0	0	0	0	0	0	0	0	0	0
6	4	12-May-21	chum	98	38	0.7	0	0	0	0	0	0	0	0	0	0	0	0	0	0	0	0	0	0	0
6	4	12-May-21	chum	99	36	0.7	0	0	0	0	0	0	0	0	0	0	0	0	0	0	0	0	0	0	0
6	4	12-May-21	chum	100	37	0.7	0	0	0	0	0	0	0	0	0	0	0	0	0	0	0	0	0	0	0
6	4	12-May-21	chum	101	35	0.5	0	1	0	0	0	0	0	0	0	0	0	0	0	0	0	0	1	1	0
6	4	12-May-21	coho	102	92	10.2	1	0	1	0	0	0	0	0	0	0	0	0	0	0	0	0	2	2	0
6	4	12-May-21	coho	103	99	10.6	0	1	0	0	0	0	0	0	0	0	0	0	0	0	0	0	1	1	0
6	4	12-May-21	coho	104	85	8.7	0	1	0	0	0	0	0	0	0	0	0	0	0	0	0	0	1	1	0
7	4	12-May-21	chum	140	44	1.2	0	0	0	0	0	0	0	0	0	0	0	0	0	0	0	0	0	0	0
7	4	12-May-21	chum	141	41	1.0	0	0	0	0	0	0	0	0	0	0	0	0	0	0	0	0	0	0	0
7	4	12-May-21	chum	142	39	0.8	0	0	0	0	0	0	0	0	0	0	0	0	0	0	0	0	0	0	0
7	4	12-May-21	chum	143	42	1.0	0	0	0	0	0	0	0	0	0	0	0	0	0	0	0	0	0	0	0
7	4	12-May-21	chum	144	44	1.1	0	0	0	0	0	0	0	0	0	0	0	0	0	0	0	0	0	0	0
7	4	12-May-21	chum	145	42	1.0	0	0	0	0	0	0	0	0	0	0	0	0	0	0	0	0	0	0	0
7	4	12-May-21	chum	146	43	1.1	0	0	0	0	0	0	0	0	0	0	0	0	0	0	0	0	0	0	0
7	4	12-May-21	chum	147	40	0.9	0	0	0	0	0	0	0	0	0	0	0	0	0	0	0	0	0	0	0
7	4	12-May-21	chum	148	41	0.9	0	0	0	0	0	0	0	0	0	0	0	0	0	0	0	0	0	0	0
7	4	12-May-21	chum	149	40	1.0	0	0	0	0	0	0	0	0	0	0	0	0	0	0	0	0	0	0	0
7	4	12-May-21	chum	150	41	1.0	0	0	0	0	0	0	0	0	0	0	0	0	0	0	0	0	0	0	0
7	4	12-May-21	chum	151	43	1.0	0	0	0	0	0	0	0	0	0	0	0	0	0	0	0	0	0	0	0
7	4	12-May-21	chum	152	43	1.0	0	0	0	0	0	0	0	0	0	0	0	0	0	0	0	0	0	0	0
8	4	13-May-21	chum	17	35	0.5	0	0	0	0	0	0	0	0	0	0	1	0	0	0	0	0	1	0	1
8	4	13-May-21	chum	18	42	1.0	0	0	0	0	0	0	0	0	0	0	0	0	0	0	0	0	0	0	0
8	4	13-May-21	chum	19	35	0.5	0	0	0	0	0	0	0	0	0	0	0	0	0	0	0	0	0	0	0
8	4	13-May-21	chum	20	45	1.0	0	0	0	0	0	0	0	0	0	0	0	0	0	0	0	0	0	0	0
8	4	13-May-21	chum	21	34	0.5	0	0	0	0	0	0	0	0	0	0	0	0	0	0	0	0	0	0	0
8	4	13-May-21	chum	22	37	0.6	0	0	0	0	0	0	0	0	0	0	0	0	0	0	0	0	0	0	0
8	4	13-May-21	chum	23	35	0.5	0	0	0	0	0	0	0	0	0	0	0	0	0	0	0	0	0	0	0
8	4	13-May-21	chum	24	45	1.2	0	0	0	0	0	0	0	0	0	0	0	0	0	0	0	0	0	0	0

SITE	WEEK	DATE COLLECTED	FISH SPECIES	FISH NUMBER	LENGTH IN MM	WEIGHT IN G	LEP Co	LEP C1	LEP C2	LEP PAM	LEP PAF	LEP AM	LEP AF	CAL Co	CAL C1	CAL C2	CAL C3	CAL C4	CAL PAM	CAL_PAF	CAL AM	CAL AF	TOT LICE ID	TOT LEP	TOT CAL
8	4	13-May-21	chum	25	44	1.2	0	0	0	0	0	0	0	0	0	0	0	0	0	0	0	0	0	0	0
8	4	13-May-21	chum	26	36	0.7	0	0	0	0	0	0	0	0	0	0	0	0	0	0	0	0	0	0	0
8	4	13-May-21	chum	27	38	0.7	0	0	0	0	0	0	0	0	0	0	0	0	0	0	0	0	0	0	0
8	4	13-May-21	chum	28	33	0.5	0	0	0	0	0	0	0	0	0	0	0	0	0	0	0	0	0	0	0
8	4	13-May-21	chum	29	34	0.5	0	0	0	0	0	0	0	0	0	0	0	0	0	0	0	0	0	0	0
8	4	13-May-21	chum	30	34	0.4	0	0	0	0	0	0	0	0	0	0	0	0	0	0	0	0	0	0	0
8	4	13-May-21	chum	31	34	0.5	0	0	0	0	0	0	0	0	0	0	0	0	0	0	0	0	0	0	0
8	4	13-May-21	chum	32	41	1.0	0	0	0	0	0	0	0	0	0	0	0	0	0	0	0	0	0	0	0
8	4	13-May-21	chum	33	31	0.3	0	0	0	0	0	0	0	0	0	0	0	0	0	0	0	0	0	0	0
8	4	13-May-21	chum	34	32	0.4	0	0	0	0	0	0	0	0	0	0	0	0	0	0	0	0	0	0	0
8	4	13-May-21	chum	35	39	0.9	0	0	0	0	0	0	0	0	0	0	0	0	0	0	0	0	0	0	0
8	4	13-May-21	chum	36	36	0.6	0	0	0	0	0	0	0	0	0	0	0	0	0	0	0	0	0	0	0
8	4	13-May-21	chum	37	37	0.7	0	0	0	0	0	0	0	0	0	0	0	0	0	0	0	0	0	0	0
8	4	13-May-21	chum	38	31	0.3	0	0	0	0	0	0	0	0	0	0	0	0	0	0	0	0	0	0	0
8	4	13-May-21	chum	39	35	0.5	0	0	0	0	0	0	0	0	0	0	0	0	0	0	0	0	0	0	0
8	4	13-May-21	chum	40	35	0.5	0	0	0	0	0	0	0	0	0	0	0	0	0	0	0	0	0	0	0
8	4	13-May-21	chum	41	33	0.4	0	0	0	0	0	0	0	0	0	0	0	0	0	0	0	0	0	0	0
8	4	13-May-21	chum	42	34	0.5	0	0	0	0	0	0	0	0	0	0	0	0	0	0	0	0	0	0	0
8	4	13-May-21	chum	43	34	0.5	0	0	0	0	0	0	0	0	0	0	0	0	0	0	0	0	0	0	0
8	4	13-May-21	chum	44	38	0.9	0	0	0	0	0	0	0	0	0	0	0	0	0	0	0	0	0	0	0
8	4	13-May-21	chum	45	48	1.5	0	0	0	0	0	0	0	0	0	0	0	0	0	0	0	0	0	0	0
8	4	13-May-21	chum	46	34	0.4	0	0	0	0	0	0	0	0	0	0	0	0	0	0	0	0	0	0	0
11	4	13-May-21	chum	15	34	0.5	0	0	0	0	0	0	0	0	0	0	0	0	0	0	0	0	0	0	0
11	4	13-May-21	chum	16	35	0.5	0	0	0	0	0	0	0	0	0	0	0	0	0	0	0	0	0	0	0
13	4	13-May-21	chum	1	40	0.8	0	0	0	0	0	0	0	0	0	0	0	0	0	0	0	0	0	0	0
13	4	13-May-21	chum	2	42	0.8	0	0	0	0	0	0	0	0	0	0	0	0	0	0	0	0	0	0	0
13	4	13-May-21	chum	3	45	1.2	0	0	0	0	0	0	0	0	0	0	0	0	0	0	0	0	0	0	0
13	4	13-May-21	chum	4	36	0.6	0	0	0	0	0	0	0	0	0	0	0	0	0	0	0	0	0	0	0
13	4	13-May-21	chum	5	39	0.8	0	0	0	0	0	0	0	0	0	0	0	0	0	0	0	0	0	0	0
13	4	13-May-21	chum	6	35	0.6	0	0	0	0	0	0	0	0	0	0	0	0	0	0	0	0	0	0	0
13	4	13-May-21	chum	7	38	0.7	0	0	0	0	0	0	0	0	0	0	0	0	0	0	0	0	0	0	0
14	4	13-May-21	stickleback	10	58	2.4	0	0	0	1	0	0	0	0	0	0	0	0	0	0	0	0	1	1	0
14	4	13-May-21	chum	11	33	0.4	0	0	0	0	0	0	0	0	0	0	0	0	0	0	0	0	0	0	0
14	4	13-May-21	chum	12	34	0.5	0	0	0	0	0	0	0	0	0	0	0	0	0	0	0	0	0	0	0
14	4	13-May-21	chum	13	35	0.5	0	0	0	0	0	0	0	0	0	0	0	0	0	0	0	0	0	0	0
14	4	13-May-21	chum	14	35	0.5	0	0	0	0	0	0	0	0	0	0	0	0	0	0	0	0	0	0	0
15	4	13-May-21	chum	135	33	0.4	0	0	0	0	0	0	0	0	0	0	0	0	0	0	0	0	0	0	0
15	4	13-May-21	chum	136	34	0.5	0	0	0	0	0	0	0	0	0	0	0	0	0	0	0	0	0	0	0
15	4	13-May-21	chum	137	4	1.0	0	0	0	0	0	0	0	0	0	0	0	0	0	0	0	0	0	0	0
15	4	13-May-21	chum	138	36	0.7	0	0	0	0	0	0	0	0	0	0	0	0	0	0	0	0	0	0	0
15	4	13-May-21	chum	139	63	4.0	0	0	0	0	0	0	0	0	0	0	0	0	0	0	0	0	0	0	0

Appendix IV – Historical Comparison (2016-2021)

A comparison of the historical results of analysis for sea lice infestation on chum salmon collected by beach seine in Jervis Inlet and Sechelt Inlet, BC from 2016 to 2021.

Year	Sample size	Total # of fish infested	Total # of lice observed	Prevalence (%)	Abundance	Intensity
2016	630	181	323	28.7	0.5	1.8
2017	920	89	163	9.7	0.2	1.8
2018	749	47	70	6.3	0.1	1.5
2019	446	49	52	11.0	0.1	1.1
2020	455	82	152	18.0	0.3	1.9
2021	721	44	49	6.1	0.1	1.1
Total	3921	492	809	12.5	0.2	1.6

A comparison of the historical results of analysis for sea lice infestation on pink salmon collected by beach seine in Jervis inlet and Sechelt Inlet, BC from 2016 to 2021.

Year	Sample size	Total # of fish infested	Total # of lice observed	Prevalence (%)	Abundance	Intensity
2016	394	119	186	30.2	0.5	1.6
2017	2	0	0	0.0	0.0	0.0
2018	494	43	53	8.7	0.1	1.2
2019	1	0	0	0.0	0.0	0.0
2020	608	153	324	25.2	0.5	2.1
2021	0	0	0	-	-	-
Total	1499	314	559	20.9	0.4	1.8