

STEP TOGETHER VOLUNTEERING IMPACT REPORT 2024

OUR IMPACT ON **YOUNG PEOPLE**, **PEOPLE WITH EXPERIENCE OF THE JUSTICE SYSTEM**, **AND VETERANS & PERSONNEL ON RECOVERY DUTY**.



Connect



Engage



Empower

OUR IMPACT

Step Together Volunteering has a structure in place so that we can effectively measure the impact of our work on the people we support. Because of the bespoke nature of our work, we have a range of ways that we we measure the impact of the work that we do.

There are three ways we measure our impact:

WARWICK-EDINBURGH MENTAL WELLBEING SCALE

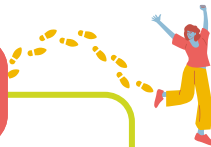
The Warwick-Edinburgh Mental Wellbeing Scale (WEMWBS) was developed to measure the mental wellbeing of individuals who are involved in projects which aim to improve mental wellbeing. It is a series of 14 positively worded statements about an individual. Each statement has 5 responses for the individual to choose from, depending on how much they agree with the statement, each response is numbered 1 - 5. All of the numbers given in answer to the statements are added up at the end to give an overall figure, which is designed to be an indicator as to the individual's overall mental wellbeing.

We use these for our clients at intervals to show the progress they have made to their mental wellbeing.



ACHIEVEMENTS AND OUTCOMES

We use our case management system to record where the people we support have got to and what they have achieved, mapping their journey from start to end. We capture all positive steps taken, for example whether they've applied for placements, volunteered with support or independently, and then where they go when they finish support with us.



PATHWAY STAR OUTCOMES

The Pathway Star is designed for use with people who need considerable support if they are to move towards work, and face significant barriers to this. There are 8 statements about different aspects of their life, with each statement to be rated 1-5 for how the individual feels about that part of their life. The Pathway Star is a holistic tool and covers eight key outcome areas:

Skills; Stability at home; Money; Healthy lifestyle; Emotional well-being; Family and relationships; Friends and connections; Confidence and aspirations.

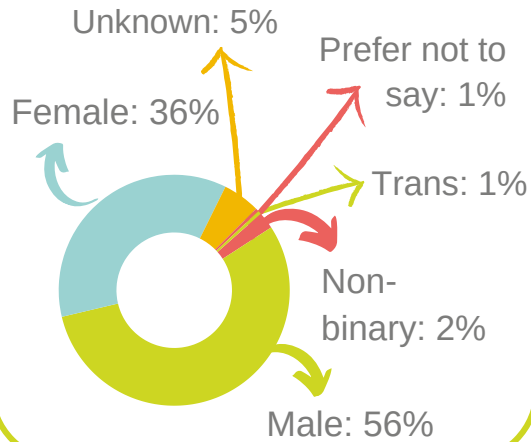
We collect data for each of these outcomes at different points on the client's journey, to see how our support impacts different areas of our life, and what areas improve the most through our support. Our top three most improved outcomes tend to be **skills, emotional-wellbeing, and confidence and aspirations.**

Typically we find that an individual's journey on WEMWBS and Pathway Star Outcomes will show an initial decreased reading in wellbeing, before it then improves. This can happen when an individual starts to realise things they want to improve about their life, and they have developed increased self-awareness to be able to do this.

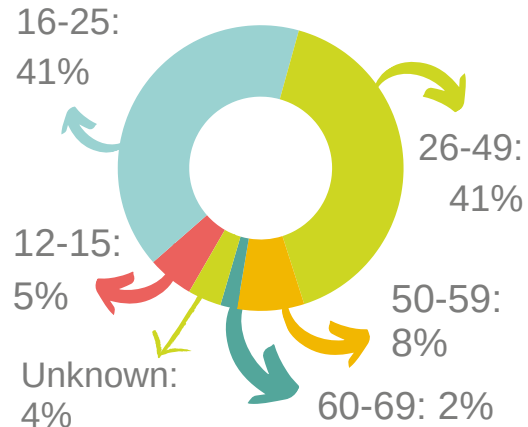


CLIENT DATA ON REFERRAL

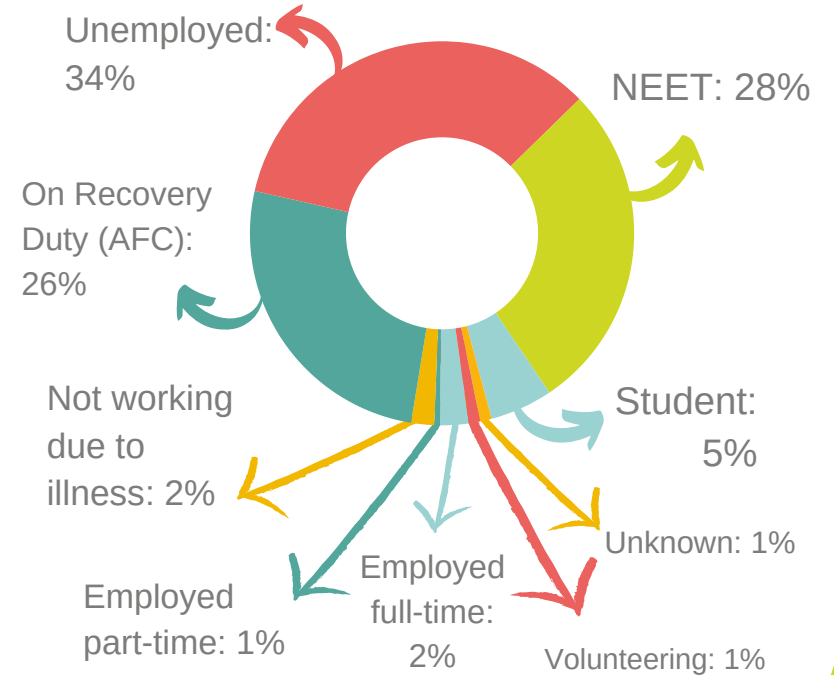
GENDER



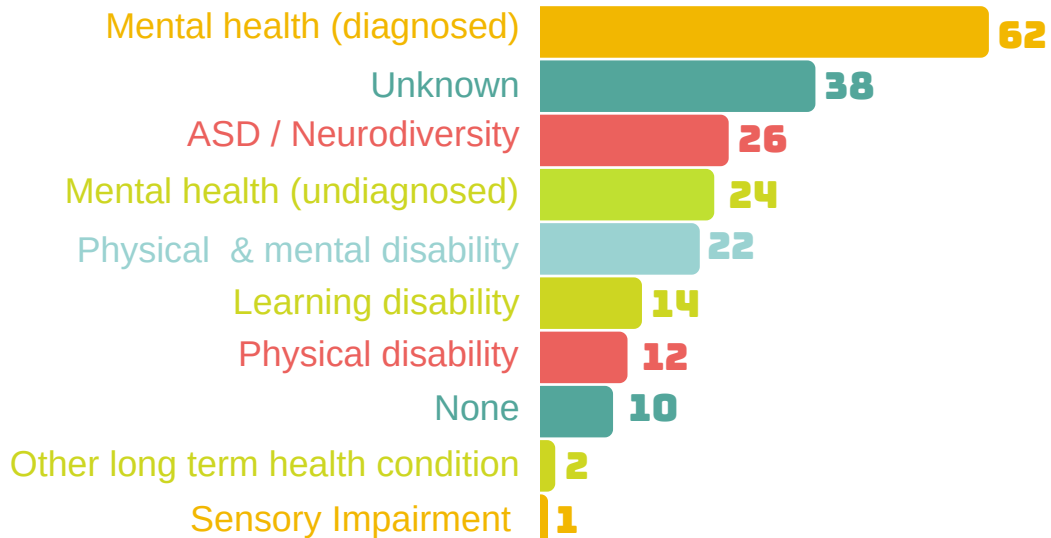
AGE



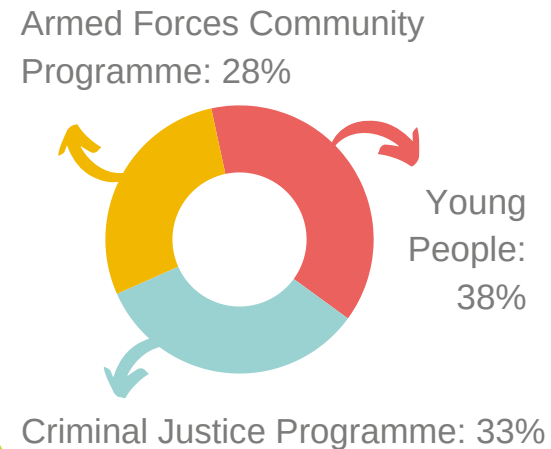
EMPLOYMENT STATUS



MAIN DISABILITY



REFERRALS



90%

...of clients were **unemployed** or **unable to work** due to poor health on referral.

OUR IMPACT: JANUARY - DECEMBER 2024

We reached over

800

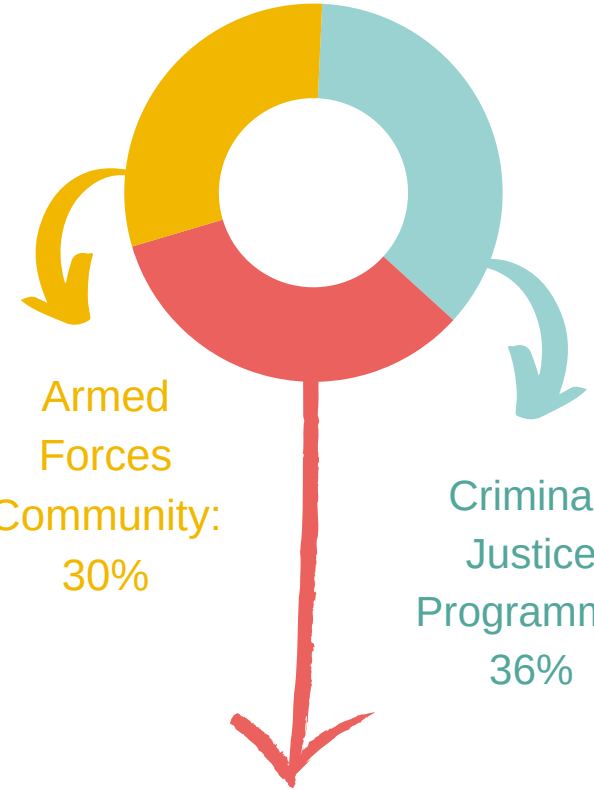
individuals

Providing intensive
1-1 support to over

200



Support across
programmes



Armed
Forces
Community:
30%

Criminal
Justice
Programme:
36%

Young People's
Programme: 34%

42%

of the people who
engaged with our 1-1
support **volunteered.***

*We also offer group support programmes such as For My Future, and Women's Peer Mentoring programmes, which are not included in our volunteering data as they are not 1-1 support designed for volunteering placements.



WELLBEING - WARWICK EDINBURGH OUTCOMES

Warwick Edinburgh is a wellbeing tool to show an individual's emotional wellbeing. It is scored out of 70, based on 14 questions, each scored 1 - 5. A total score 41 - 44 indicates potential mild depression. A score < 41 indicates probable clinical depression. The bottom 15% of scores in the UK are 14 - 42.

Most of our clients started with a score that indicated a high risk of clinical depression.

A SNAPSHOT...



A DEEPER DIVE...



87% of clients started with a score lower than 45, indicating likely depression or clinical depression..

85%

of these clients experienced improved wellbeing.

This is broken down further below...

Average scores



Average start score:
Indicates probable clinical depression.

Average end score:
Out of the probable risk for depression.



61% of clients started with a score lower than 41, indicating probable clinical depression.

91%

of these clients experienced improved wellbeing.

26% of clients scored 41 - 44

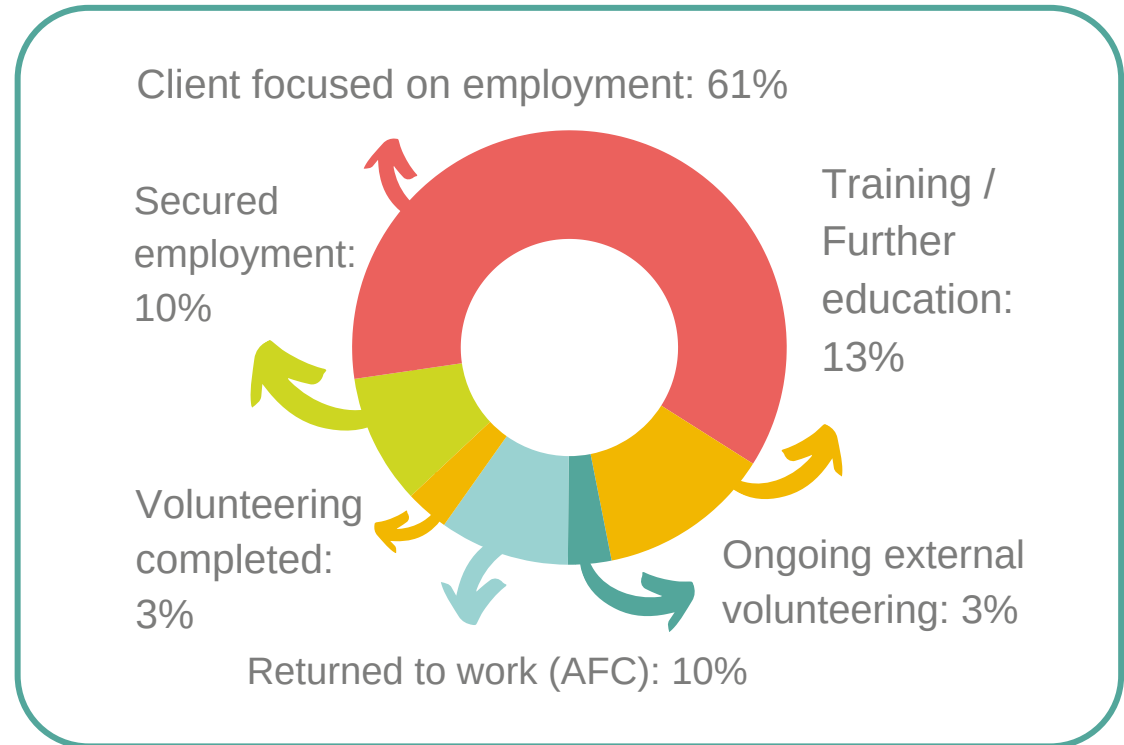
WELLBEING - PATHWAY STAR OUTCOMES

Pathway Star Outcomes are another wellbeing measurement tool showing someone's improvement in separate aspects of their life.



FINAL OUTCOMES

These outcomes show what clients move onto at the end of their support with us.



81%

... of clients who continued to engage in our support were either focused on employment or had secured employment by the end of our support.

This chart shows how powerful supported volunteering can be.