

# OUR IMPACT - 2022

WE REACHED OVER

800

INDIVIDUALS

PROVIDING  
INTENSIVE 1-1  
SUPPORT TO OVER

200

SUPPORT ACROSS  
PROGRAMMES



ARMED  
FORCES  
COMMUNITY:  
42%

CRIMINAL  
JUSTICE  
PROGRAMME:  
30%

YOUNG PEOPLE  
PROGRAMME: 28%

80%

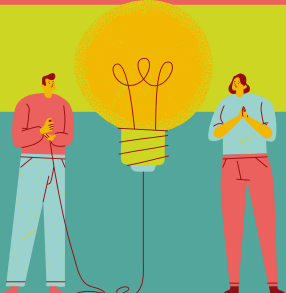
WHO APPLIED FOR  
PLACEMENTS

VOLUNTEERED

65%

WHO WE SUPPORTED INTO  
VOLUNTEERING, WENT ON  
TO VOLUNTEER

INDEPENDENTLY!



# WELLBEING - PATHWAY STAR



**85%**

EXPERIENCED IMPROVED

**CONFIDENCE &  
ASPIRATIONS**

**75%**

EXPERIENCED IMPROVED



**HEALTHY  
LIFESTYLE**



**75%**

GAINED NEW

**SKILLS**

## WARWICK EDINBURGH

Warwick Edinburgh is a tool to show an individual's emotional wellbeing. It is scored out of 70, based on 14 questions, each scored 1 - 5. A total score 41 - 44 indicates potential mild depression. A score < 41 indicates probable clinical depression. The bottom 15% of scores in the UK are 14 - 42.

**85%**

EXPERIENCED  
IMPROVED WELLBEING



AVERAGE SCORES

**41**

START



**50**

END