



Rieder

Changing the face  
of building skins.

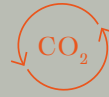
[rieder.cc/us](http://rieder.cc/us)

# Sustainable facade solutions.

fibrec is a glass fibre reinforced concrete that combines the advantages of both materials. The quality, technical characteristics and longevity of the natural product facilitate versatile and avantgarde applications. The authentic appearance creates a vivid facade. Rieder facade cladding is designed as a mounted, ventilated facade and can be fixed in a visible or concealed manner.

CO<sub>2</sub>-positive by 2030: Rieder is pressing ahead with its decarbonization efforts with a variety of measures. Since 2019, CO<sub>2</sub> emissions were reduced by 35 %. The three pillars of a sustainable strategy - substitution, more efficient processes, and offset measures - serve as the driving forces to achieve the transition to a climate-positive company.

## 1/3 Strategy



### 1/3 Substitution

With the concrete matrix fibreC 3.0 Rieder has developed a CO<sub>2</sub>-reduced material for sustainable facade elements. 50 % of the cement was replaced by local natural pozzolana. This allows a CO<sub>2</sub>-reduction of 30 % compared with matrix 2.2. It represents the preliminary stage to cement-free production.



### 1/3 Efficient processes

Rieder has developed a new product, pixel, which reduces waste during production. Pixels are small-format concrete shingles produced from the residual material generated, for example, by cutting large-size slabs.



### 1/3 Offset measures

As part of its offsetting activities, 80,000 trees have already been planted in Canada to bind CO<sub>2</sub>. The aim is to have planted half a million trees by 2025.

Read the sustainability report



fibrec matrix 3.0 - first implementation on the Rieder Campus in Maishofen

# concrete skin

Large format panels

The stable panels, only 13 mm thick, offer a wide range of design options. As the name suggests, concrete skin stretches smoothly over buildings and, in combination with formparts, over corners and edges. This creates a unique material flow effect.



# öko skin

Vivid facade slats

With öko skin, Rieder offers slatted concrete facades. The various surface design options create a vibrant play of colors. The slats can be installed with little effort and unlike wood, never need to be painted or sanded. The newly developed concealed fastening system hidden fix, utilizing 3 fixing points instead of 5, enables a quick and easy installation.



# formparts

3D shaped concrete elements

As monolithic-looking concrete element, formparts offer a high degree of flexibility and a wide range of design options. formparts are available with a sharp as well as a rounded edge. With the new plug & play fastening system, Rieder provides a complete solution with coordinated components.

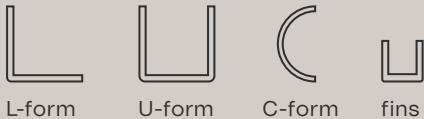


# formparts

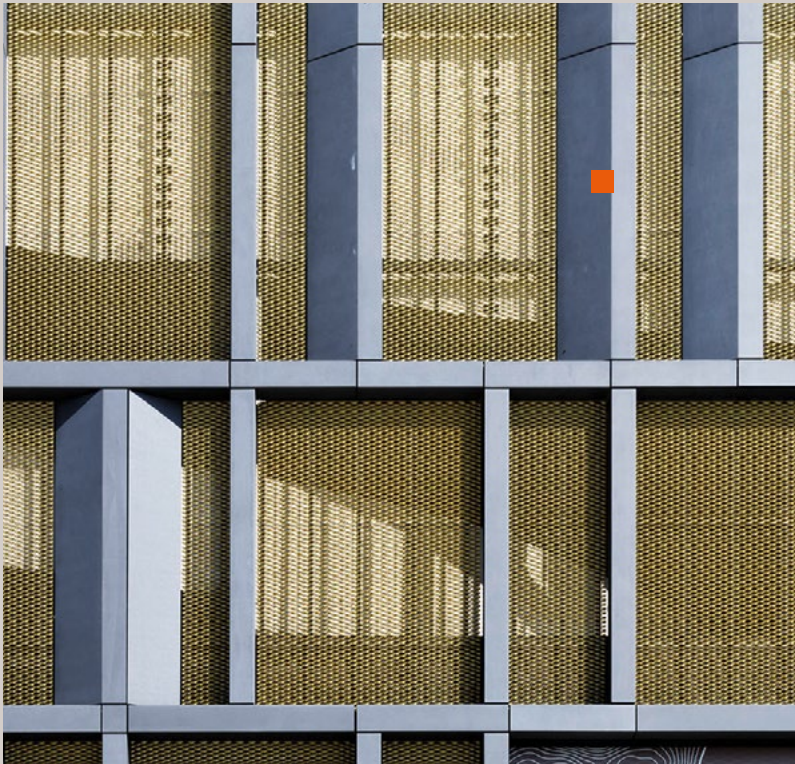
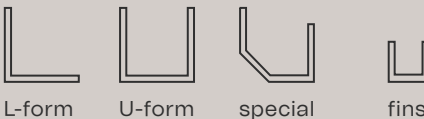
## Shapes

Only 1/2" thin  
Unrolling: max. 78-3/4"  
Various design options

### round-edged



### sharp-edged



ECE Center CANO Singen, Germany  
ECE Group GmbH & Co. KG  
formparts rounded edge  
liquid black  
ferro light

# R2R – Rendering to Realization

includes optional services, such as design development, facade optimization, static calculations, fastening methods, mock-ups and prototyping, element substructures, pre-assembly, and logistics concepts.



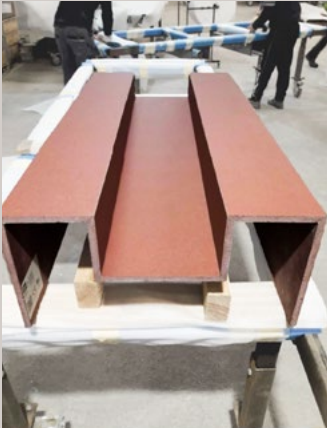
Rendering



Concept



Mock-up



Production

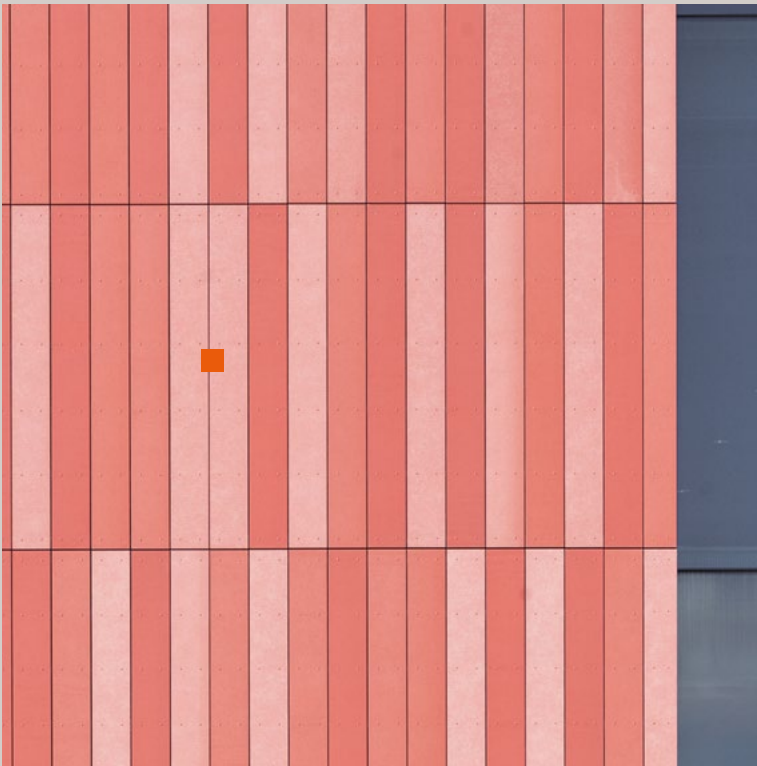
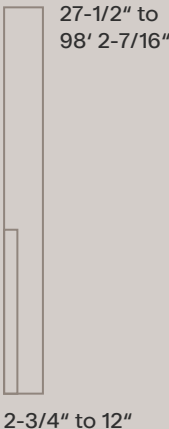
# öko skin

## Sizes

### format



### individual



Southeast Community College  
BVH Architecture, Multistudio  
öko skin  
coralline  
ferro, ferro light, matt



Discover all colors,  
surfaces and textures

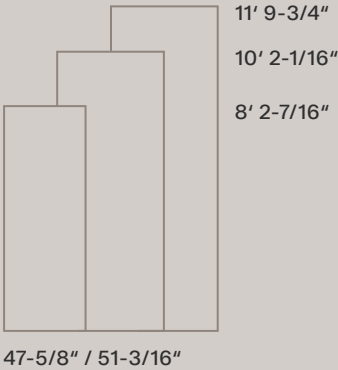


Patricia Reser Center for the Arts, opsis architecture  
öko skin, ivory, silvergrey, ferro, ferro light, matt

# concrete skin

## Sizes

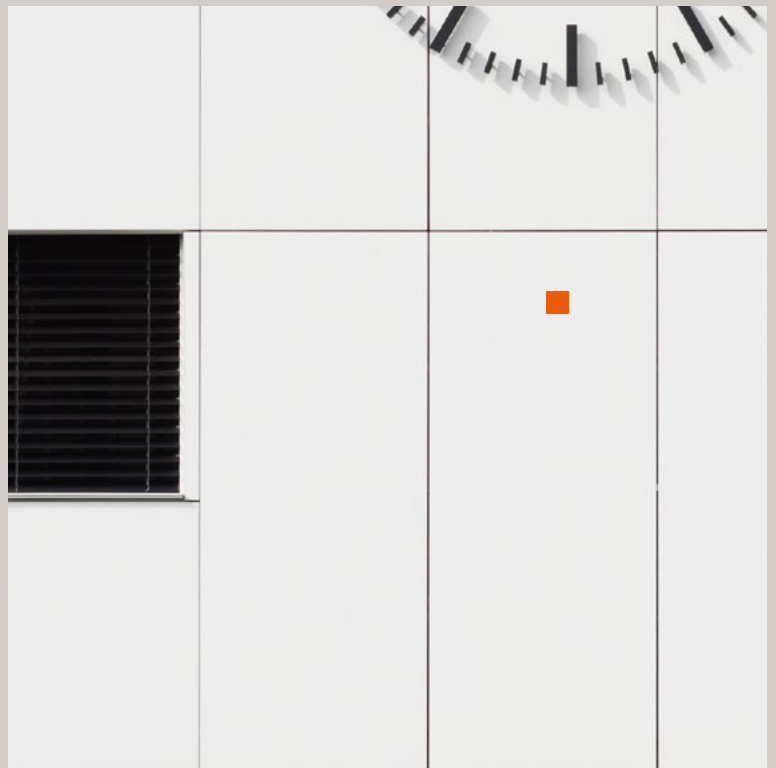
### format



### cut



### individual



Mobatime  
Baumgartner Partner Architects  
concrete skin  
polar white  
ferro

# Element construction: CLT x Rieder

ACMS Architects designed a new building in a modular hybrid construction with 258 living spaces for students in passive house standard. It was possible to reduce construction time by 10 months with a prefabricated shell, a prefabricated facade and prefabricated bathrooms. The complex was developed as a modular system consisting of prefabricated elements. Highly insulated wooden panel elements were used for the building envelope. The factory assembly of windows, building services and the facade resulted in ecologically optimised components with a wide range of design options.



Variowohnungen, Element construction, ACMS Architects  
öko skin, anthracite, ferro, ferro light, matt