

(1.1.UL25) BLACKENED BRASS



(1.2.UL22) BRUSHED CHROME



(1.3.UL26) BRUSHED GOLD



(1.4.UL20) NATURAL BRASS

METAL FINISHES

Snelling metal finishes have been meticulously developed over many years. Designed to age gracefully or maintain their original beauty, they embody the highest quality and longevity.

PRODUCT CARE

Our products are crafted to last for generations. To keep your Snelling piece in optimal condition, follow the care instructions provided for each finish.

Snelling products are designed for indoor use only. Avoid placing them in areas exposed to direct sunlight, moisture, or fluctuating temperatures, as this may affect both surface quality and structural integrity.

NOTES

For warranty details and product terms, please visit our website.

Custom finishes available upon request

SWATCH



(1.1.UL25)



(1.2.UL22)



(1.3.UL26)



(1.4.UL20)

Hand-aged finish that darkens further over time. It may appear lighter when new but will deepen with exposure.

CARE

Remove dust with a soft cloth or feather duster regularly. Do not use solvents or metal polishers.

Features a subtle brushed grain that softens reflectivity. Electroplated for durability, it resists aging, especially in high-moisture areas.

CARE

Remove dust with a soft cloth or feather duster regularly. Gentle solvent can be used.

A luxurious 24Kt gold-plated finish with a fine brushed texture. Like Brushed Chrome, it remains stable without aging or tarnishing.

CARE

Remove dust with a soft cloth or feather duster regularly. Do not use solvents or metal polishers.

Unlacquered it will develop a patina over time, deepening in tone as it reacts to its environment. Restore shine with metal polish.

CARE

Use a slightly damp soft cloth for cleaning and a gentle metal polisher for restoring shine. Metal polisher can be found at local hardware stores.
Note: Using a metal cleaner may result in an uneven surface.



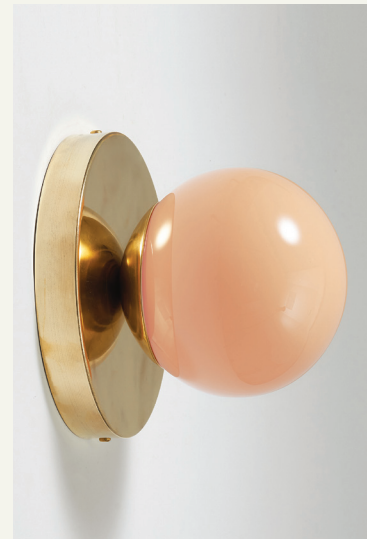
(2.1.UL01) WHITE



(2.2.UL02) CAMEL



(2.3.UL03) SMOKE



(2.4.UL08) BLUSH

GLASS FINISHES

Snelling studio works in partnership with world acclaimed blowing studios. Glass is coloured by introducing minerals and pigments. Air marks and a very small percentage of flecs may be visible in the blown glass. Due to the moving and alive quality of the raw material, variations from our image library may vary.

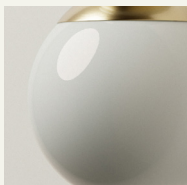
PRODUCT CARE

To clean glass or acrylic, gently wipe using a soft, dry microfibre cloth. The cloth may be slightly moistened with water. Do not use chemical solutions on acrylic and avoid using cleaning solutions near metal parts as they may damage the finish.

NOTES

For warranty details and product terms, please visit our website.

SWATCH



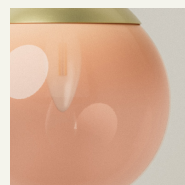
(2.1.UL01)



(2.2.UL02)

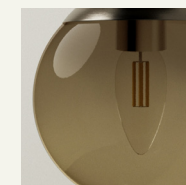


(2.3.UL03)



(2.4.UL08)

FURTHER GLASS OPTIONS



(2.5.UL09)



(2.6.UL07)