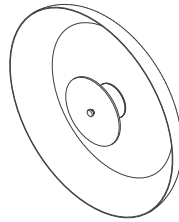


PERSPECTIVE



## LENS WALL SCONCE MAJOR

The minimal form of the Lens Wall Sconce Major is informed and extracted from the sculptural pieces of the Lens collection. This minimal pendant is a process of reduction and subtly. Both finishes have an acrylic diffuser that activates and enhances the light output.

### PRODUCT TYPE

Wall Sconce

### MATERIALS

Acrylic  
Aluminium  
Brass

### LAMP SPECIFICATIONS

4.7 W LED / Warm White 3000K / 800 Lumens / Dimmable

All components are compliant with New Zealand and Australian safety standards, have an earth fitting and are IP20.

**NATURAL BRASS**

- Natural Brass will develop a patina over time.
- Use Brasso with a soft cloth to restore it's shine.

**BLACKENED BRASS**

- Blackened brass will develop a patina over time.
- The finish will darken and change from its current finish.

**POLISHED BRASS**

- Use a soft cloth or feather duster to remove dust.

**LACQUERED BRASS**

- Use a soft cloth or feather duster to remove dust.

**ACRYLIC**

- Use a microfibre cloth for cleaning.
- Use water and a small amount of soap to remove any dust or dirt, only use light pressure.
- Do not use chemical cleaners.

**POLISHED ALUMINIUM**

- Use a soft cloth or feather duster to remove dust.

**MARBLE**

- Use a soft cloth or feather duster to remove dust.

**POWDER-COATED METALS**

- Use a soft cloth or feather duster to remove dust.

**PRECAUTIONS**

- Keep out of direct heat and sunlight

**INSTALLATION**

- Lighting must be installed by a qualified electrician exclusively using the components provided.
- Dimmable by PWM signal or Leading Edge

**WARRANTY AND EXCHANGE POLICY**

- Refer to website: [snellingstudio.com](http://snellingstudio.com)