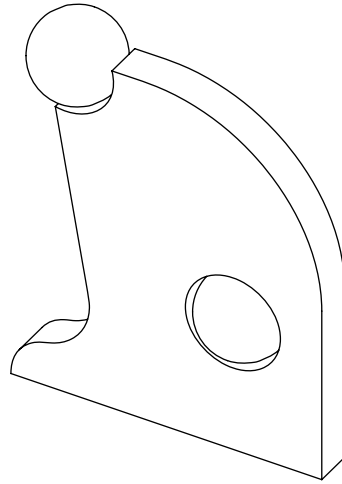


PERSPECTIVE



## LENS CAMEL SCULPTURE

Borne from the intuitive process of blind contour drawing, the Camel Sculpture is a centrepiece of the Lens collection. The piece's single strong curve enacts the tension and grace of an arched back in yoga's camel pose. Also known as ustrasana, this pose is one of the most intense and emotive in yoga, in which the front of the body is opened up. Originally translated by Bec Snelling to charcoal on paper, the pose is ultimately translated here into stainless steel and glass. In the Camel Sculpture both serenity and strength are invoked, and reflected back from its mirrored surface.

## MATERIALS

Polished Mirrored Stainless Steel  
Glass

## PRODUCT TYPE

Art Piece

## LAMP SPECIFICATIONS

E27 LED / Candle / Clear / 3-4W /  
330-350 Lumens / Dimmable / Warranty: 2 years

All components are compliant with New Zealand and Australian safety standards.

## DIMENSIONS

(H) 1004mm  
(W) 800mm  
(D) 230mm

## MIRROR FINISH STAINLESS STEEL

- Lightly clean with a microfibre cloth.
- Do not use cleaners with abrasive or harsh chemicals.

## GLASS

- Clean glass surface with a clean, dry soft cloth and dust carefully.

## PRECAUTIONS

- Keep out of direct heat and sunlight

## WARRANTY AND EXCHANGE POLICY

- Refer to website: [snellingstudio.com](http://snellingstudio.com)