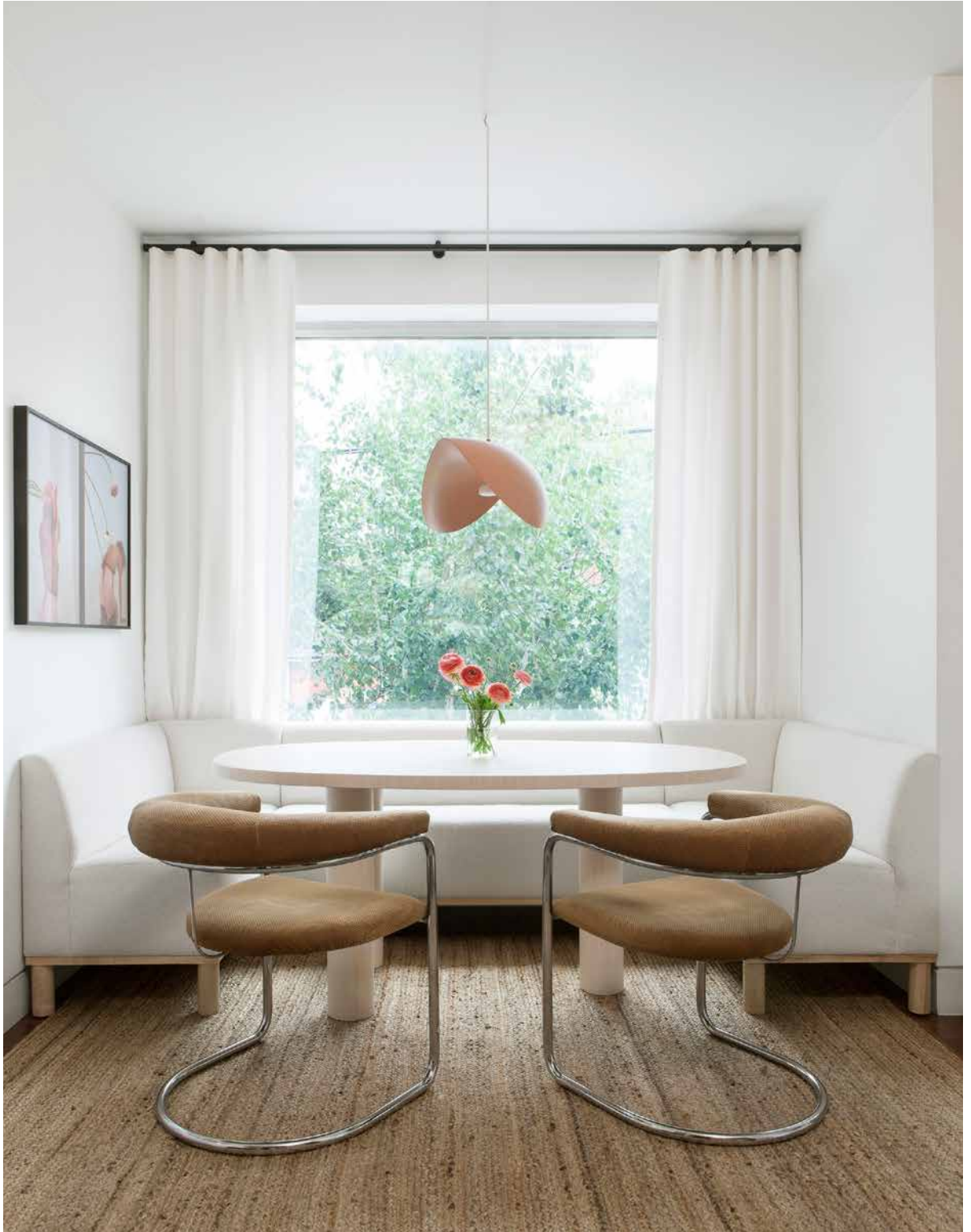


LA
AUTHENTIK LIGHTING





[CREATE]

VERB

Bring (something) into existence. To produce through imaginative skill.
Synonyms: produce, generate, invent, originate, design.

The evocative power of light has always fascinated me. Whether in a public or private space, it is the light that sets the mood. A key element in design, light has the power to generate warmth, encourage relaxation, stimulate creativity. To me, lighting transcends its purpose and reveals the true essence of a project.

This is what pushed me, as an entrepreneur, to create all my light fixtures by hand, without any automation; to build a head office in the country and to open urban boutiques aligned with our ambitions. Our authenticity also shines through our desire to collaborate with designers from all corners of the world, as well as with design-savvy individuals.

Creating is often accompanied by doubt, excitement and pride. It also comes with a lot of effort, without compromising on fun. Ambitious creation, passionate work; this is the foundation of Luminaire Authentik's mission. This is what drives us. Every single day.

MAUDE RONDEAU, FOUNDER



SHAPE + COLOUR + FUNCTION

A creative work space dedicated to custom lighting projects

2015 LUMINAIRE AUTHENTIK FOUNDED

25 PASSIONATE EMPLOYEES

4 LOCATIONS — MONTREAL - TORONTO - TOWNSHIP - SANDBANKS - UP NEXT NYC

16 000 SQUARE FEET IN OUR HEAD OFFICE

+ 1000 MODELS MADE THROUGHOUT THE YEARS

∞ POSSIBLE CONFIGURATIONS

1 FRIENDLY DOG NAMED BILLY

A CREATIVE SPACE FOR DESIGNERS AND THE GENERAL PUBLIC

In Montréal's St-Henri neighbourhood & Toronto's Leslieville, Luminaire Authentik offers designers (both amateurs and professionals) a one-of-a-kind private experience.

By appointment, from Monday to Friday, this space is transformed into a collaborative workspace where professional designers are welcome to work alone, with their clients or with our experts, to design their lighting projects. Upon request, specialized classes are also offered.

Not-to-be-missed at LA boutique: a materials library that identifies every model and finish; with endless possibilities, any design is conceivable.

- COLLABORATIVE WORK SPACE
- LIGHT FIXTURE CREATION ZONE
- MATERIALS LIBRARY

THE ADDRESSES:

- 4289 NOTRE-DAME STREET WEST, MONTRÉAL
- 1122 RUE DU SUD, COWANSVILLE
- 1027, QUEENS STREET EAST, TORONTO





CAPSULE COLLECTION

LINEAR

[Linjär]

Swedish Adjective

The essence of the linear collection is rooted in functionality while honouring simple, sophisticated and clean lines. The collection combines a minimalist design with a new dimming technology that dims cool to warm to create the perfect customized atmosphere in your home or projects.

The Linear Collection offers a minimalist option with a sleek aesthetic.



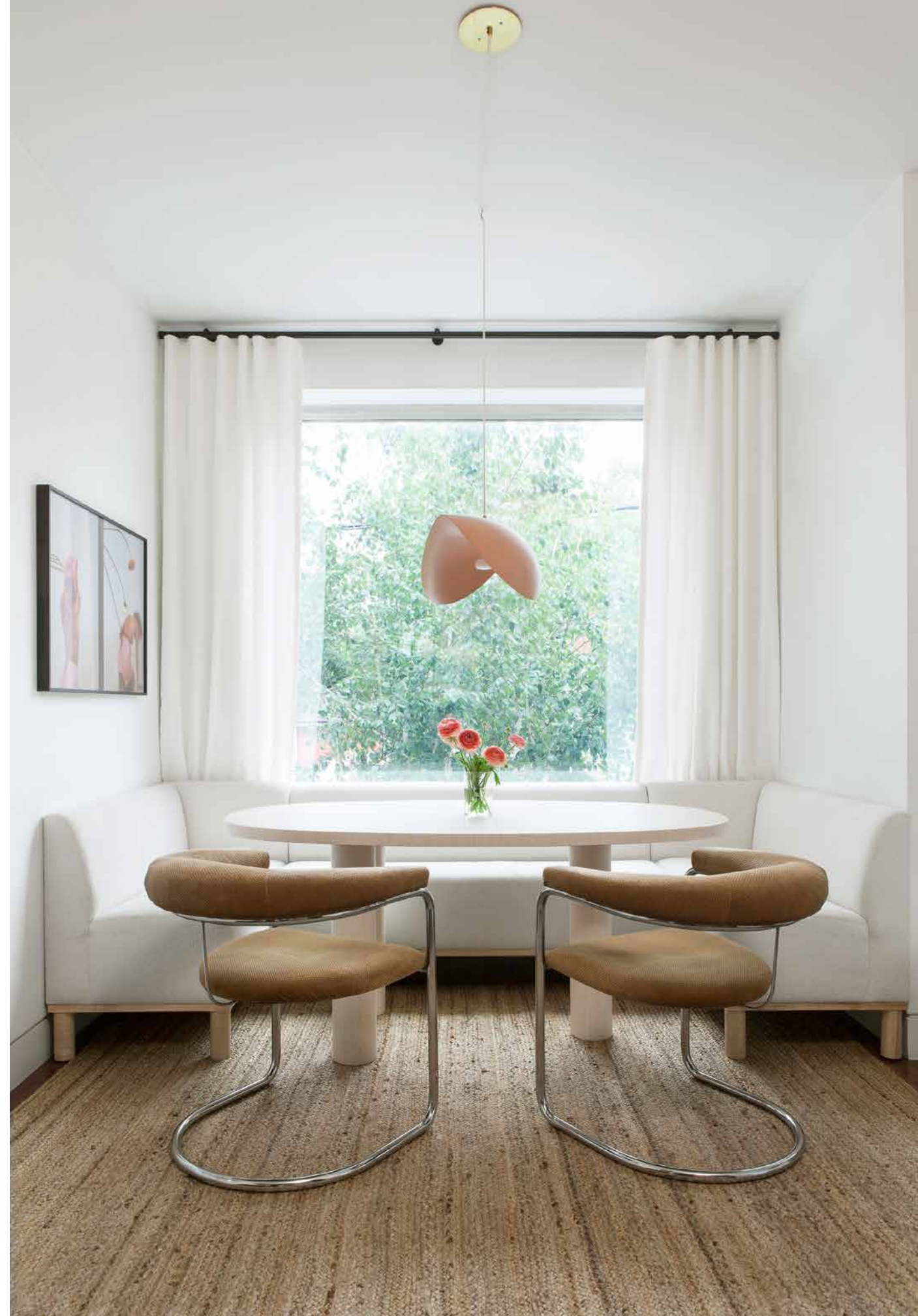
CAPSULE COLLECTION

COQUELICOT

Inspired by natural flower & organic shape.

The refined, flowing silhouette of the Coquelicots family transcends femininity.

With its nude orse enamel finish also available in our full colour range, the Coquelicot comes in a variety of pendant, ceiling, and free-standing models.





CAPSULE COLLECTION

POTTERY

Mixed with the unique geometric shapes of TALA's bulbs, the pottery collection pays homage to the rawness and soft textures that pottery can provide. The collection has a retro feel with a distinctly modern aesthetic.

AUTHENTIK × **tala**




CAPSULE COLLECTION

TERRAZZO

Inspired by raw material and the know-how of local artisans.

The Terrazzo collection is cast and handcrafted in the region by the talented company of Beton Johnstone. The strength and beauty of classic materials are combined with avant-garde production methods, with the aim of offering timeless quality creations.

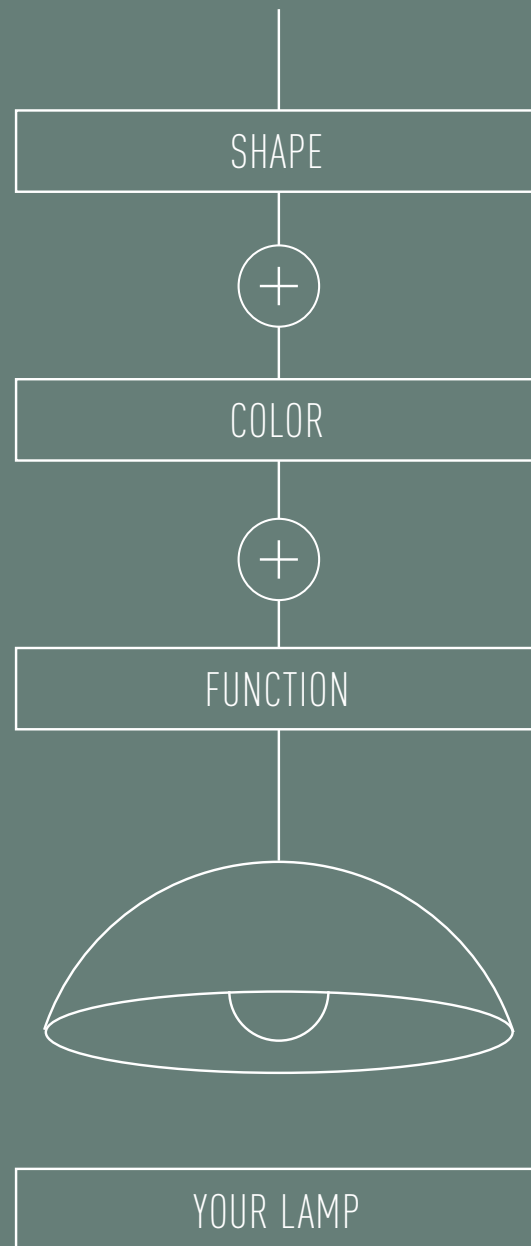
AUTHENTIK × 



LA MIX&MATCH

A space dedicated to the creation of lighting

Customize your fixture without any limits. Choose lampshade and interchange it with the construction of your choice. Customize the colors of the different sections. Print your datasheet, or export the 3D models of the lampshade and construction.



VIRTUAL MEETING

Created out of the current situation, we started a virtual service that offers a new way to engage with our clients

If you do not live near one of our showrooms or if it is more convenient for you to "meet" online, we suggest that you schedule a virtual consultation with one of our advisers about your project.

To schedule a meeting, simply choose the best time for us to chat by selecting the "Service – Virtual Meeting" tab.

We are here to help make the process easier and your space more beautiful.



2021 COLLECTION



DOME-T 07-LA00



COMPTON-T LA00



LOVT 01-LA00



CONE-T 15-LA00



GLASS COQUELICOT 11-LA00



COQUELICOT 15-LA00



COQUELICOT 11-LA88



COQUELICOT 11-LA64



DOME-P 12 LA00



TUB-P OBLO 0803-LA00



TUB-P 0803-LA00



TUB-P 0604-LA00



COQUELICOT 11-LA06



COQUELICOT 11-LA15



NUBE DANOISE 0609-LA40



NUBE DISK 0608-LA40



GB NN 08-LA00



NUBE 08-LA00



DANOISE 34-LA00



DANOISE 0515-LA40



LOV 03-LA00



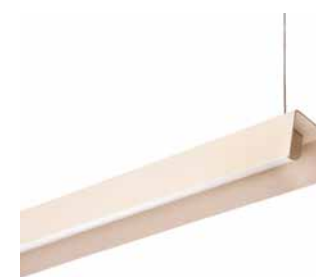
KOPP-P 04-LA00



COMPTON-P LA00



KREMA 0508-LA00



LINJAR



LINJAR

OUR CREATIONS

Since its beginnings in 2015, Luminaire Authentik has left its mark on the world of design and architecture with some impressive projects developed for clients including the Fairmount the Queen Elizabeth Hotel, Hôtel Birks, Marriott, Hilton, Desjardins' head office, Ubisoft and the Montréal Museum of Fine Arts.



FAIRMOUNT THE QUEEN ELIZABETH HOTEL

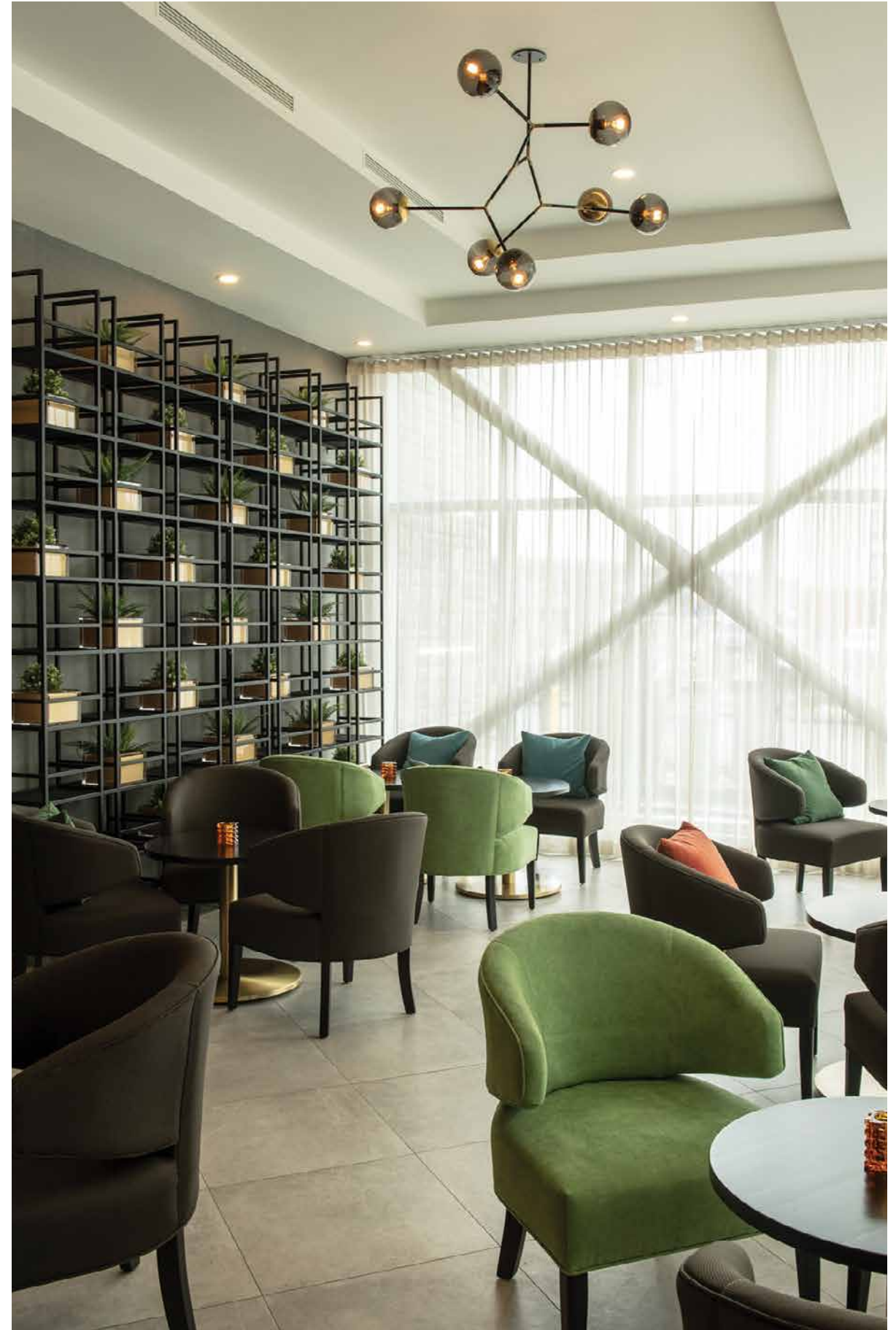
Project completed in collaboration with Sid Lee Architecture and Pomerleau.



Recipient of a Grand prix du design, catégorie Appareil d'éclairage en design de petite série.



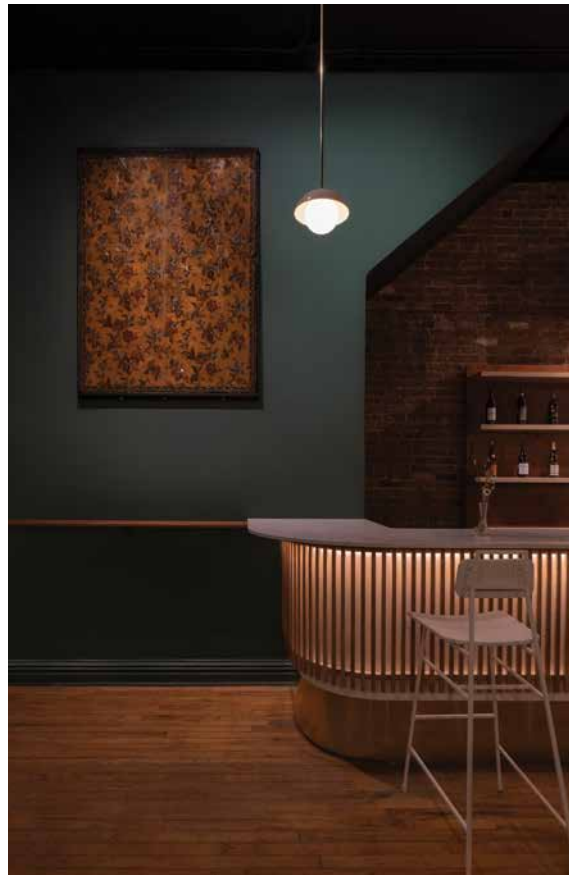
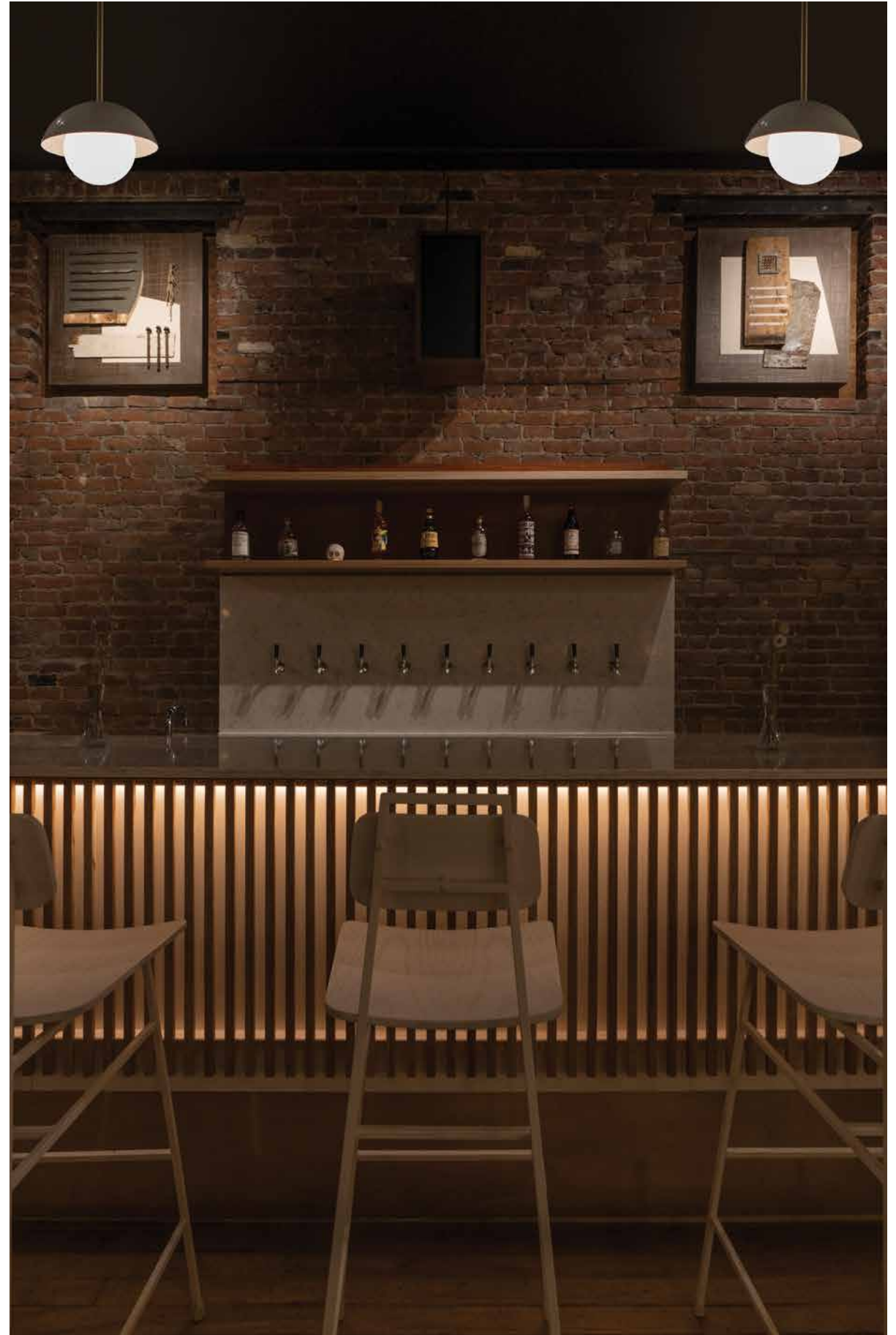
[ABOVE]
FAIRMOUNT THE QUEEN ELIZABETH HOTEL
Project completed in collaboration with
Sid Lee Architecture and Pomerleau.



[RIGHT PAGE]
DOUBLE TREE HOTEL BY HILTON, DORVAL



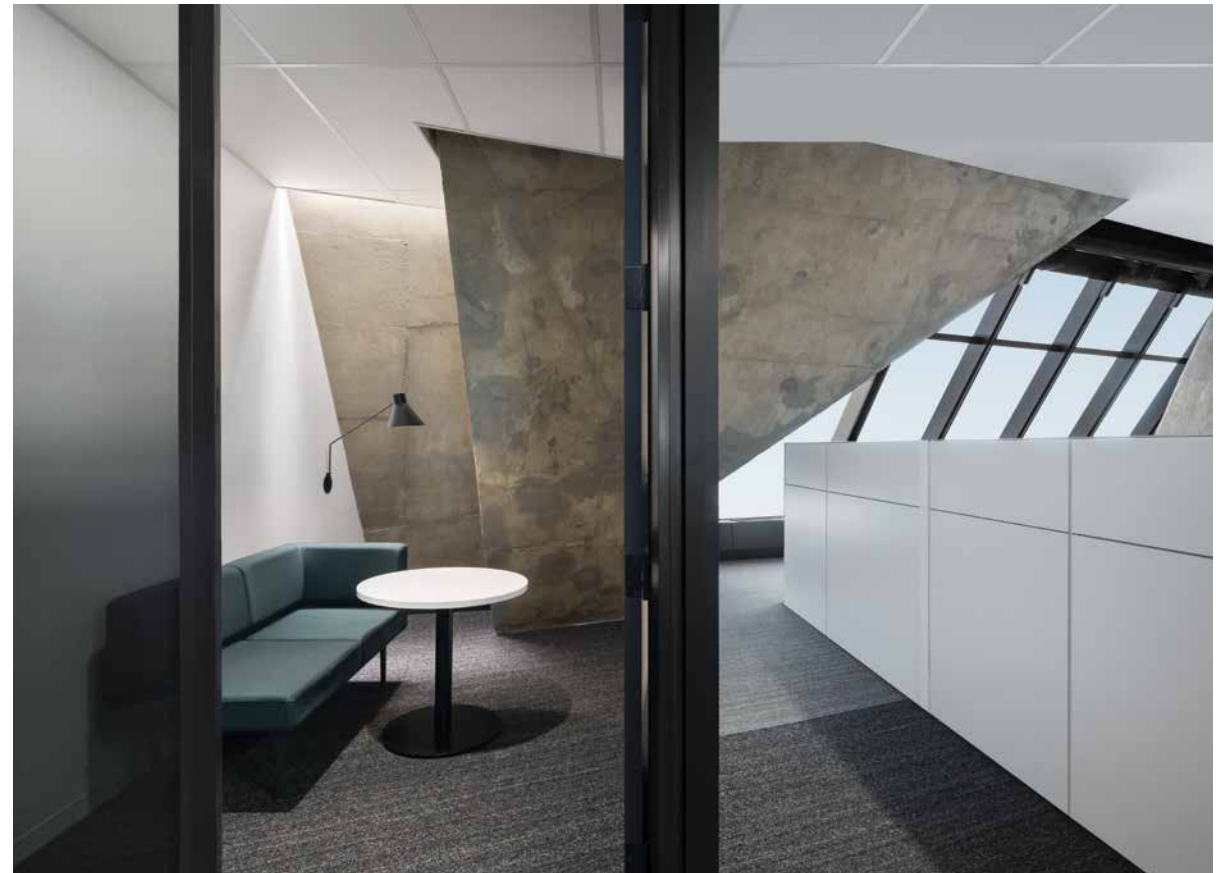
BRASSERIE HENRI
Located in the famous Birks building,
the project was completed in collaboration
with the design firm Atelier Zebulon Perron



STEM BAR
Design: RVO



VIN POLISSON
Design: Luminaire Authentik
Photo: Photographie Intérieure CO



DESJARDINS

Project completed in collaboration with Provencher Roy & Lumenpulse.

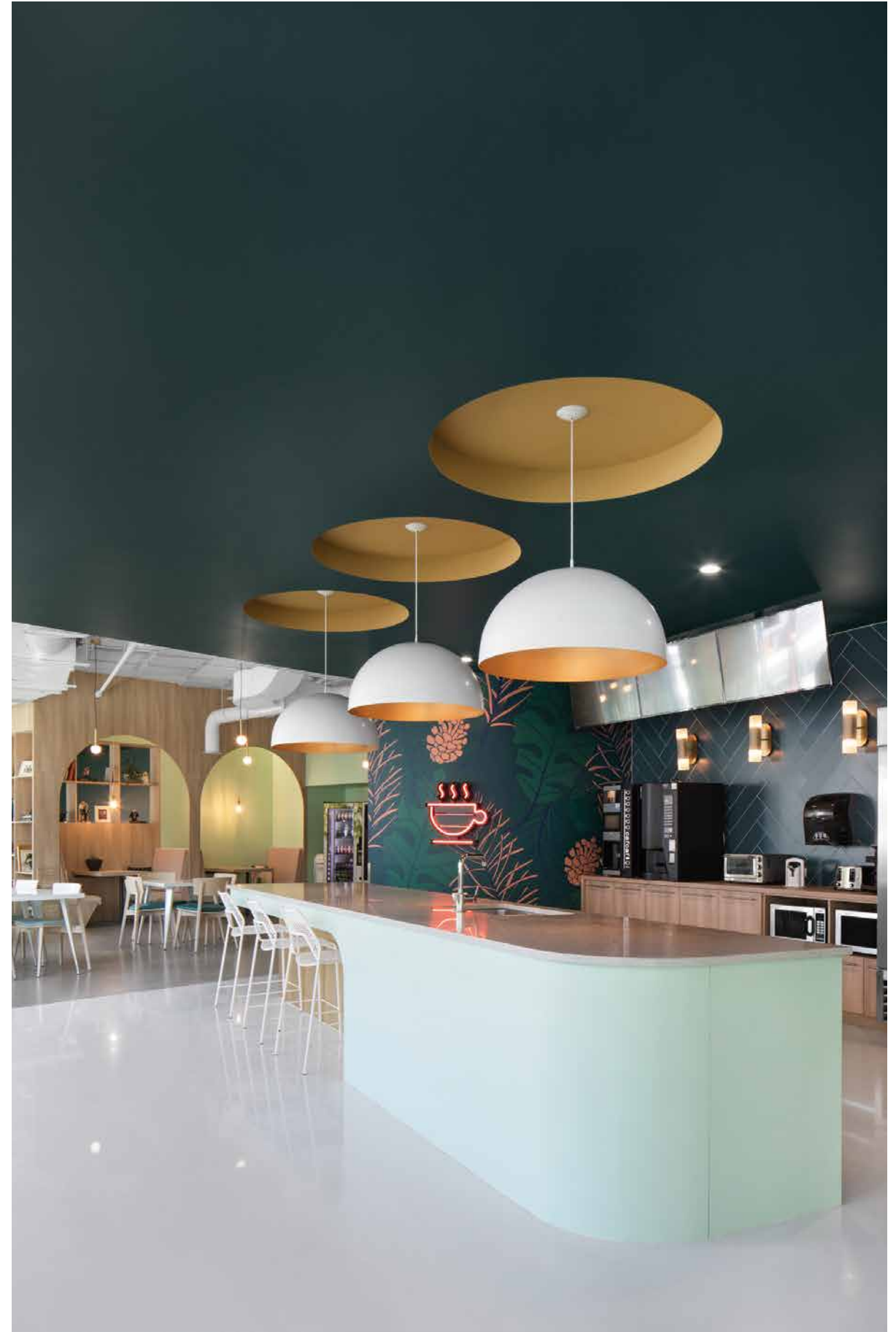


Recipient of a Grand prix du design, catégorie Appareil d'éclairage.



(LEFT PAGE)
ARTOPEX
Photo: Phil Bernard Photographe

(RIGHT PAGE)
UBISOFT







RESIDENTIAL

(PREVIOUS PAGE)
MGODMER DESIGNER
Photo: Maxime Brouillet

(LEFT PAGE)
NATUREHUMAINE
Featured in **dwel**

(ON THE RIGHT)
DESK ARCHITECT
Photo: Maxime Brouillet

(BELOW)
FJORD INTERIEUR
Projet Anice
Photo: Photographie Intérieure CO





BEHIND THE SCENES

Expressing creativity, design and functionality is the very essence of Luminaire Authentik. Inspired by Scandinavian aesthetics, our lamps are drawn, designed and made in Quebec.

Thanks to our talented and passionate team, they come to life in our workshop in the Eastern Townships; made entirely by hand, without any automation. Our goal? To offer our clients a unique, 360° experience where they are present at every step of their project; initial idea, production and distribution, our process is 100% local.

- QUEBEC DESIGN
- ARTISANAL FABRICATION
- 100% LOCAL PRODUCTION
- CERTIFIED cUL

alt HOTELS
BY LE GERMAIN

artopex

a+traction

BIRKS

BMO 

 cara
we find possible

CentreBell

 CERAGRES

 Desjardins

dōmio

DOYLE

Earls
KITCHEN + BAR

ESTÉE LAUDER

Fairmont
HOTELS & RESORTS

 Hilton

 LOTO
QUÉBEC

 lightspeed

sidlee

 M

||| Manulife

 Marriott

SSQ

POMERLEAU

SKYSPA

 Microsoft

RICARDO

Sobeys


WILLIAM GRAY

 shopify

SSENSE

 Scotiabank
Saddledome

 UBISOFT

 Sun Life

 Mikes

BÂTON ROUGE
STEAKHOUSE & BAR

BOUTIQUE AND MATERIALS LIBRARY

4289, rue Notre-Dame Ouest,
Montréal, Québec, H4C 1R7

1122, rue du Sud,
Cowansville, Québec, J2K 2Y8

1027, Queens Street East
Toronto, Ontario, M4M 1K3

—

HEADQUARTER AND MANUFACTURE

1122, rue du Sud
Cowansville, Québec, J2K 2Y8

—

T.: 514.662.0352

info@luminaireauthentik.com

luminaireauthentik.com