

LIGHTING COLLECTION
AMERICAS



FRITZ HANSEN

EXTRAORDINARY DESIGN SINCE 1872

Welcome to a world of design, craftsmanship and beauty. Here, you'll find more than 150 years of Danish design tradition and collaborations with visionary architects, designers and artists from around the world.

Welcome to Fritz Hansen.



CONTENTS

08 A PASSION FOR LIGHTING DESIGN

PRODUCT PORTFOLIO

12 AQ01™

14 CALABASH™

16 CARAVAGGIO™

22 CLAM™

26 KAISER idell™

34 ORIENT™

38 PM-02

40 SUSPENCE™

44 LIGHTING COLLECTION



Caravaggio™ Matt pendants (P2) in White shown with Series 7™ chairs together with an Essay™ table.

A PASSION FOR LIGHTING DESIGN

Since 1872, Fritz Hansen has been crafting extraordinary design that transforms the everyday into something special. By continuously pushing the boundaries of design and craftsmanship we shape the world for those who wish to be inspired, intrigued and surprised.

Fritz Hansen has a passion for lighting. This passion for extraordinary lighting design drives us to create pendants, wall lamps, table lamps and floor lamps that make interior spaces come alive.

In this catalogue, you will find an array of lighting from extraordinary designers from around the world, produced with the high quality material and precise attention to detail that are synonymous with Fritz Hansen's name.

We hope you enjoy this catalogue. If you have any questions, our local sales representatives are at your service.

For more information, visit fritzhanzen.com.



Clam™ pendant (Ø550).

PRODUCT PORTFOLIO



AQ01™ table lamp in Black on a Pluralis™ table paired with Oxford™ chairs.

AQ01™ FUNCTIONAL ELEGANCE

The AQ01™ offers a fresh take on the classic architect's desk light. Distinguished by its delicate lines and matt finish, the light offers a refined elegance and genius utility. Technology allows springs to be hidden within the design and AQ01's shade to be switched on and off, or dimmed up and down, with the touch of a hand on the lamp's shade.

AQ01™ table lamp in Black on a Pluralis™ table paired with Oxford™ chairs.





CALABASH™ ORGANIC SIMPLICITY

The Calabash™ pendants designed by Komplot Design are inspired by the simple and harmonious form of the calabash pumpkin. Made of aluminum and finished with chrome or textured coating, the pendants balance form and function, and technology with craftsmanship. Turned on or left off, the distinct design has strong presence by combining convex and concave shapes – mirroring the room in Silver or Gold, and standing strong in Black Meteor or Grey Meteor with a confident, sculptural quality.



CARAVAGGIO™ TIMELESS SILHOUETTE

The simple, timeless Caravaggio™ pendant by Cecilie Manz consists of a metal shade with soft, feminine lines held by a metal suspension. The textile cable is particularly well integrated into the design and gives the lamp its finishing touch. The lamp casts a concentrated, downward light whilst also illuminating both the suspension and the cable through a hole at the top of the lamp. The shade is designed to prevent glare and provide beautiful, well balanced light.



Caravaggio™ Matt pendants (P2) in Grey45, shown with Ant™ chairs and Essay™ table.





Clam™ pendant (Ø440).



Clam™ pendant (Ø550) above an Essay™ table with Grand Prix™ chairs.

CLAM™ A PEARL OF LIGHT

Mouth-blown opal glass and brushed brass come together – and move apart – to create elegant, adjustable and atmospheric lighting for dining and living spaces. Equally elegant open as it is closed, the perfectly balanced design elevates any room with its considered combination of form and ambience.





KAISER idell™ pendants (6722-P) in Soft Ochre, Smooth Slate, and Russet Red.

KAISER idell™ FOREVER MODERN

All KAISER idell™ lighting is characterised by Christian Dell's ability to create elegant design with the basic hallmarks of Modernism: geometric shapes. The entire lighting design series, while diverse in its expressions, is united by its Bauhaus origin, timelessness and clever details.



KAISER idell™ floor lamp (6580-F Luxus) in Matt Black next to a Lissoni Sofa™.



KAISER idell™ table lamp (6631-T Luxus) in Black.



What's in a name? The term "idell" is a portmanteau of "idea" and "Dell" - the designer's last name. While "Kaiser" references the original manufacturer.

From 1922 to 1925, Christian Dell worked as a foreman of the metal workshop at the Bauhaus in Weimar where he developed a highly innovative and pioneering style of design. In 1926, Dell began sketching lamps. His first catalogue was launched in 1936, and the table

lamp model 6631-T Luxus appeared for the first time, becoming the undisputed top model of the KAISER idell™ series. Ever since, it has been considered a symbol of Germanic design, exquisite choice of materials, and precise engineering.



KAISER idell™ floor lamp (6556-F) in White by an Egg™ lounge chair .



The KAISER idell™ table lamp (6556-T) in Matt Black.



Orient™ pendant in Aluminum and Oak.

ORIENT™ LUXURY LIVES ON

The Orient™ pendant was created by Jo Hammerborg in 1963 and relaunched by Fritz Hansen in 2013. The fitting elegantly conceals a low energy light source and ensures a soft, pleasant light without any glare. The shade is hand spun in a wooden mould, a feature that underlines the original, organic shape and true craftsmanship of this beautiful pendant design.



Orient™ pendants (P1) in Aluminum and Oak together with PK54™ and PK15™.





PM-02 table lamp in Brass shown in a Planner™ Shelving.



PM-02 table lamp in Brass.

PM-02 ELEGANT ILLUMINATION

The PM-02 table lamp by legendary American designer Paul McCobb emits diffused light from hand-blown, opal glass to create a warm, atmospheric glow.

SUSPENCE™ SUSPENDED IN AIR

In the making of the Suspence™ lamp series, the designers GamFratesi sought to translate movement into a physical shape: a water droplet suspended in air. The final form appears as an uninterrupted whole, enhanced by its monochrome expression and natural, soft curve. An infinity diffuser at the base of the lamp concentrates the light, prevents glare, and creates an elegant optical illusion.





Suspence™ pendant (P2) in Light Grey above Pluralis™ table with Ant™ chairs.

LIGHTING
COLLECTION

AQ01™

Design: Anne Qvist, 2017

The AQ01™ offers a fresh take on the classic architect's desk light. Distinguished by its delicate lines and matt finish, the light offers a refined elegance and genius utility. Technology allows springs to be hidden within the design and AQ01's shade to be switched on and off, or dimmed up and down, with the touch of a hand on the lamp's shade.

Isolation class: Class II
IP rating: IP20 (Dry location)
Certification: cULus
Energy label: G



Color: White
Cord: White
Item: 62699105



Color: Black
Cord: Black
Item: 62699008



Color: Blue
Cord: Blue
Item: 62699206

Category: Table lamp
Dimensions:
Height: 7.3 in
Width: 17.7 in
Cord specifications:
Length: 98 in
Material: PVC
Materials:
Shade/Base: Aluminum
Diffuser: Polycarbonate (PC)
Weight: 1,1 lb
Light source: LED (Built-in)
Features: Tilttable, Swivel, Dimmable



Color: White
Cord: White
Item: 62716005



Color: Black
Cord: Black
Item: 62716208



Color: Blue
Cord: Blue
Item: 62716106

Category: Table lamp (Plug-in)
Dimensions:
Height: 17.8 in
Width: 17.7 in
Cord specifications:
Length: 98 in
Material: PVC
Materials:
Shade/Base: Aluminum
Diffuser: Polycarbonate (PC)
Weight: 1,1 lb
Light source: LED (Built-in)
Features: Tilttable, Swivel, Dimmable



Color: White
Cord: White
Item: 62698805



Color: Black
Cord: Black
Item: 62698708



Color: Blue
Cord: Blue
Item: 62698906

Category: Wall lamp
Dimensions:
Height: 17.8 in
Width: 17.7 in
Cord specifications:
Length: 98 in
Material: PVC
Materials:
Shade/Base: Aluminum
Diffuser: Polycarbonate (PC)
Weight: 1,1 lb
Light source: LED (Built-in)
Features: Tilttable, Swivel, Dimmable

CALABASH™

Design: Komplot Design, 2010

Calabash™ pendants are inspired by the simple and harmonious form of the calabash pumpkin. Made of aluminum and finished with chrome or textured coating, Calabash pendants are an example of authentic craftsmanship. Turned on or left off, its distinct design has strong presence by combining convex and concave shapes – mirroring the room or manifesting that reflection with sculptural quality.

Isolation class: Class II
IP rating: IP20 (Dry location)
Certification: cULus
Canopy: Black



Color: Silver
Item: 14283172

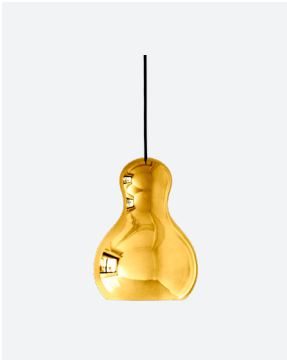


Color: Gold
Item: 14283274

Category: Pendant
Model: P1
Dimensions:
Height: 8.3 in
Diameter: 6.2 in
Cord specifications:
Length: 236 in
Color: Black
Material: Textile
Materials: Aluminum
Weight: 1,3 lb
Socket: E26 max 40W



Color: Silver
Item: 14284172



Color: Gold
Item: 14284274

Category: Pendant
Model: P2
Dimensions:
Height: 12 in
Diameter: 8.8 in
Cord specifications:
Length: 236 in
Color: Black
Material: Textile
Materials: Aluminum
Weight: 1,8 lb
Socket: E26 max 60W



Color: Silver
Item: 14285172

Category: Pendant
Model: P3
Dimensions:
Height: 19 in
Diameter: 13.4 in
Cord specifications:
Length: 236 in
Color: Black
Material: Textile
Materials: Aluminum
Weight: 3,5 lb
Socket: E26 max 100W

CARAVAGGIO™ / CARAVAGGIO™ MATT

Design: Cecilie Manz, 2005

Caravaggio™ lighting have gained the status of design icons. Designed by Cecilie Manz, Caravaggio upscales a timeless silhouette with a fresh, modern expression. The P1 curved shade makes it perfect as a single lamp for smaller side tables or in multiples over worktables and counters.

Isolation class: Class II
IP rating: IP20 (Dry location)
Certification: cULus
Canopy: White



Color: White (High-gloss)
Cord: Grey
Item: 54270205



Color: White (Matt)
Cord: White
Item: 14289213



Color: Warm Silk (Matt)
Cord: Grey45
Item: 74715012

Category: Pendant
Model: P1
Dimensions:
Height: 8.5 in
Diameter: 6.4 in
Cord specifications:
Length: High-gloss: 118 in /
Matt: 236 in
Color: Varies w. shade Color
Material: Textile
Materials:
Shade: Steel
Suspension: Steel
Weight: 1,8 lb
Socket: E12 max 60W



Color: Grey45 (Matt)
Cord: Grey45
Item: 14288112



Color: Archipelago Stone (Matt)
Cord: Grey45
Item: 74714912



Color: Dark Sienna (Matt)
Cord: Grey45
Item: 74715101



Color: Black (High-gloss)
Cord: Red
Item: 54270008



Color: Black (Matt)
Cord: Grey45
Item: 14290008

CARAVAGGIO™ / CARAVAGGIO™ MATT

Design: Cecilie Manz, 2005

Caravaggio™ lighting have gained the status of design icons. Designed by Cecilie Manz, Caravaggio upscales a timeless silhouette with a fresh, modern expression. The P2 curved shade opens the light gently outwards for working or dining.

Isolation class: Class II
IP rating: IP20 (Dry location)
Certification: cULus
Canopy: White



Color: White (High-gloss)
Cord: Grey
Item: 54270305



Color: White (Matt)
Cord: White
Item: 14289413



Color: Grey45 (Matt)
Cord: Grey45
Item: 14288212

Category: Pendant
Model: P2
Dimensions:
Height: 13.2 in
Diameter: 10.1 in
Cord specifications:
Length: High-gloss: 118 in /
Matt: 236 in
Color: Varies w. shade Color
Material: Textile
Materials:
Shade: Steel
Suspension: Steel
Weight: 2,4 lb
Socket: E26 max 100W



Color: Dark Sienna (Matt)
Cord: Grey45
Item: 74715501



Color: Black (High-gloss)
Cord: Red
Item: 54270108



Color: Black (Matt)
Cord: Grey45
Item: 14290108



Color: Dark Ultramarine
Cord: Grey45
Item: 74715203

CARAVAGGIO™ / CARAVAGGIO™ MATT

Design: Cecilie Manz, 2005

Caravaggio™ lighting have gained the status of design icons. Designed by Cecilie Manz, Caravaggio upscales a timeless silhouette with a fresh, modern expression. The P3 curved shade can be supplied with an optional diffuser to soften the illumination.

Isolation class: Class II
IP rating: IP20 (Dry location)
Certification: cULus
Canopy: White



Color: White (High-gloss)
Cord: Grey
Item: 74270705



Color: White (Matt)
Cord: White
Item: 14288613



Color: Warm Silk (Matt)
Cord: Grey45
Item: 74715812

Category: Pendant
Model: P3
Dimensions:
Height: 20.3 in
Diameter: 15.7 in
Cord specifications:
Length: 236 in
Color: Varies w. shade Color
Material: Textile w. wire
Materials:
Shade: Aluminum
Suspension: Steel
Diffuser: Polycarbonate (PC)*
Weight: 5,1 lb
Socket: E26 max 200W



Color: Grey45 (Matt)
Cord: Grey45
Item: 14288312



Color: Archipelago Stone (Matt)
Cord: Grey45
Item: 74715712



Color: Dark Sienna (Matt)
Cord: Grey45
Item: 74715901



Color: Black (High-gloss)
Cord: Red
Item: 74271408



Color: Black (Matt)
Cord: Grey45
Item: 14290208



Color: Dark Ultramarine
Cord: Grey45
Item: 74715603

CARAVAGGIO™ OPAL

Design: Cecilie Manz, 2005

Caravaggio™ lighting have gained the status of design icons. Designed by Cecilie Manz, Caravaggio upscales a timeless silhouette with a fresh, modern expression. The opal shade opens the light gently outwards for working or dining.

Isolation class: Class II
IP rating: IP20 (Dry location)
Certification: cULus
Canopy: White



Color: Opal glass
Item: 94272005

Category: Pendant
Model: P1
Dimensions:
Height: 8.5 in
Diameter: 6.4 in
Cord specifications:
Length: 118 in
Color: Silver-grey
Material: Textile
Materials:
Shade: Opal glass
Suspension: Steel
Weight: 2.0 lb
Socket: E12 max 60W



Color: Opal glass
Item: 94272105

Category: Pendant
Model: P2
Dimensions:
Height: 13.2 in
Diameter: 10.1 in
Cord specifications:
Length: 118 in
Color: Silver-grey
Material: Textile w. wire
Materials:
Shade: Opal glass
Suspension: Steel
Weight: 4.4 lb
Socket: E26 max 100W



Color: Opal glass
Item: 94272205

Category: Pendant
Model: P3
Dimensions:
Height: 20.3 in
Diameter: 15.7 in
Cord specifications:
Length: 118 in
Color: Silver-grey
Material: Textile w. wire
Materials:
Shade: Opal glass
Suspension: Steel
Weight: 10,4 lb
Socket: E26 max 100W

CLAM™

Design: Ahm & Lund, 2019

Like a seashell hides its pearl, the Clam™ pendant opens to reveal its light. Inspired by nature and designed by Ahm & Lund, this award-winning pendant is acknowledged for both its remarkable form and the ambiance it creates with diffused light. With beautiful, mouth-blown glass and brass details, the Clam™ pendant by Ahm & Lund is a new classic within lighting excellence. Each shade is individually made and variations in surface thickness and texture, including air bubbles, may occur.

Isolation class: Class I
IP rating: IP20 (Dry location)
Certification: cULus
Canopy: Brass (untreated)*



Color: Opal/Brass
Item: 94724405

Category: Pendant
Model: Ø440

Dimensions:
Height: 20.5 in
Width: 17.3 in
Depth: 17.3 in

Cord specifications:
Length: 236.2 in
Material: Textile w. wire
Color: Black

Materials:
Shade: Opal glass
Suspension: Brass (untreated)*

Weight: 14.3 lb



Color: Opal/Brass
Item: 94722305

Category: Pendant
Model: Ø550

Dimensions:
Height: 21.2 in
Width: 21.6 in
Depth: 21.6 in

Cord specifications:
Length: 236.2 in
Material: Textile w. wire
Color: Black

Materials:
Shade: Opal glass
Suspension: Brass (untreated)*

Weight: 19.8 lb

KAISER idell™

Design: Christian Dell, 1936

The renowned KAISER idell™ lamp is characterised by Christian Dell’s ability to create elegant design with the basic hallmarks of Modernism: geometric shapes. Today, the KAISER idell is widely recognised as a symbol of noble Bauhaus design, exquisite choice of material, and precise engineering. The perfectly formed 6722-P pendant light has a simple, compact form that belies its flexibility. Whether suspended in clusters, rows or as a single source of light, its restrained beauty shines bright in a wide range of settings.

Isolation class: Class II
IP rating: IP20 (Dry location)
Certification: cULus
Canopy: Chrome



Color: Smooth Slate
Item: 94721512



Color: Soft Ochre
Item: 94721402



Color: Russet Red
Item: 94721301

Category: Pendant
Model: 6722-P

Dimensions:
Height: 6.1 in
Diameter: 5.7 in

Cord specifications:
Length: 118 in
Color: Black
Material: Textile
Materials: Steel/Chrome
Weight: 2.2 lb
Socket: E26 max 40W



Color: Black
Item: 94722008

KAISER idell™

Design: Christian Dell, 1936

The renowned KAISER idell™ lamp is characterised by Christian Dell’s ability to create elegant design with the basic hallmarks of Modernism: geometric shapes. Today, the KAISER idell is widely recognised as a symbol of noble Bauhaus design, exquisite choice of material, and precise engineering. The signature domed shade of the 6631-P creates a wide pool of welcoming light for working, dining or relaxing.

Isolation class: Class II
IP rating: IP20 (Dry location)
Certification: cULus
Canopy: Chrome



Color: White
Item: 64700905



Color: Ruby Red
Item: 64701201



Color: Black
Item: 64701008

Category: Pendant
Model: 6631-P
Dimensions:
Height: 5.3 in
Diameter: 11.2 in
Cord specifications:
Length: 118 in
Color: Black
Material: Textile
Materials: Steel/Chrome
Weight: 2.2 lb
Socket: E26 max 60W



Color: Matt Black
Item: 64701108

KAISER idell™

Design: Christian Dell, 1936

The renowned KAISER idell™ lamp is characterised by Christian Dell’s ability to create elegant design with the basic hallmarks of Modernism: geometric shapes. Today, the KAISER idell is widely recognised as a symbol of noble Bauhaus design, exquisite choice of material, and precise engineering. With its asymmetrical shade and adjustable head for directional lighting, the versatile and minimalist 6556-T table lamp is renowned for its iconic shape and timeless appeal.

Isolation class: Class II
IP rating: IP20 (Dry location)
Certification: cULus
Canopy: Chrome



Color: White
Item: 62703205



Color: Black
Item: 62703308



Color: Matt Black
Item: 62703408

Category: Table lamp
Model: 6556-T
Dimensions:
Height: 18.5 in
Diameter (shade): 8.5 in
Diameter (base): 7.3 in
Cord specifications:
Length: 78 in
Color: Black
Material: Textile
Materials: Steel/Chrome
Weight: 5,3 lb
Socket: E26 max 25W
Features: Tilttable

KAISER idell™

Design: Christian Dell, 1936

The renowned KAISER idell™ lamp is characterised by Christian Dell’s ability to create elegant design with the basic hallmarks of Modernism: geometric shapes. Today, the KAISER idell is widely recognised as a symbol of noble Bauhaus design, exquisite choice of material, and precise engineering. Soon after its launch in 1936, the 6631-T Luxus table lamp became the top model of the KAISER idell series, exemplifying Dell’s graceful, uncluttered style.

Isolation class: Class II
IP rating: IP20 (Dry location)
Certification: cULus
Canopy: Chrome



Color: White
Item: 62701805



Color: Ruby Red
Item: 62702101



Color: Dark Green
Item: 62702206

Category: Table lamp
Model: 6631-T Luxus
Dimensions:
Height: 16.7 in
Diameter (shade): 11.2 in
Diameter (base): 7.6 in
Cord specifications:
Length: 78 in
Color: Black
Material: Textile
Materials: Steel/Chrome
Weight: 8,4 lb
Socket: E26 max 25W
Features: Tilttable



Color: Black
Item: 62701908



Color: Matt Black
Item: 62702008

KAISER idell™

Design: Christian Dell, 1936

The renowned KAISER idell lamp is characterised by Christian Dell’s ability to create elegant design with the basic hallmarks of Modernism: geometric shapes. Today, KAISER idell is widely recognised as a symbol of noble Bauhaus design, exquisite choice of material and precise engineering. With its artful balance of an asymmetrical shade, a slender stem and an adjustable head for directional lighting, the 6556-F floor lamp provides ambient and task lighting in Dell’s signature style.

Isolation class: Class II
IP rating: IP20 (Dry location)
Certification: cULus
Canopy: Chrome



Color: White
Item: 61703805



Color: Black
Item: 61703908



Color: Matt Black
Item: 61704008

Category: Floor lamp
Model: 6556-F Luxus
Dimensions:
Height: 49.2 in
Diameter (shade): 8.5 in
Diameter (base): 8.9 in
Cord specifications:
Length: 78 in
Color: Black
Material: Textile
Materials: Steel/Chrome
Weight: 11,4 lb
Socket: E26 max 25W
Features: Tilttable

KAISER idell™

Design: Christian Dell, 1936

The renowned KAISER idell lamp is characterised by Christian Dell's ability to create elegant design with the basic hallmarks of Modernism: geometric shapes. Today, KAISER idell is widely recognised as a symbol of noble Bauhaus design, exquisite choice of material and precise engineering. The 6580-F Luxus floor lamp is adjustable in height. The ball-jointed lampshade has an adjustable tilt head for directional lighting.

Isolation class: Class II
IP rating: IP20 (Dry location)
Certification: cULus
Canopy: Chrome



Color: White
Item: 61704405



Color: Black
Item: 61704508



Color: Matt Black
Item: 61704608

Category: Floor lamp
Model: 6580-F Luxus
Dimensions:
Height: 49.2-53.1 in
Diameter (shade): 8.5 in
Diameter (base): 8.9 in
Cord specifications:
Length: 78 in
Color: Black
Material: Textile
Materials: Steel/Chrome
Weight: 14,3 lb
Socket: E26 max 25W
Features: Height adjustable, Swivel

ORIENT™

Design: Jo Hammerborg, 1963

The Orient™ pendant is an ode to fine craftsmanship. The lampshade is hand spun in a wooden mould - a feature that underlines its original, organic shape. The fitting elegantly conceals the light source and ensures a soft, pleasant light without any glare.

Isolation class: Class II
IP rating: IP20 (Dry location)
Certification: cULus
Canopy: Black (Aluminum/Oak), White (Black/Rosewood, Copper/Rosewood)



Color: Aluminium/Oak
Cord: Grey
Item: 84718972



Color: Black/Rosewood
Cord: Black
Item: 74708108



Color: Copper/Rosewood
Cord: Black
Item: 44289564

Category: Pendant
Model: P1
Dimensions:
Height: 9.6 in
Diameter: 8.8 in
Cord specifications:
Length: 118 in
Material: Textile
Materials:
Aluminum/Oak
Black lacquered aluminum/Rosewood
Copper/Rosewood
Weight: 1.5 lb (Copper: 2.6 lb)
Socket: E26 max 60W



Color: Aluminium/Oak
Cord: Grey
Item: 84719072



Color: Black/Rosewood
Cord: Black
Item: 74708208



Color: Copper/Rosewood
Cord: Black
Item: 44289664

Category: Pendant
Model: P2
Dimensions:
Height: 14.5 in
Diameter: 13.3 in
Cord specifications:
Length: 118 in
Material: Textile
Materials:
Aluminum/Oak
Black lacquered aluminum/Rosewood
Copper/Rosewood
Weight: 2.4 lb (Copper: 4.9 lb)
Socket: E26 max 75W



Color: Aluminium/Oak
Cord: Grey
Item: 84719172



Color: Black/Rosewood
Cord: Black
Item: 74708308

Category: Pendant
Model: P3
Dimensions:
Height: 21.2 in
Diameter: 19.6 in
Cord specifications:
Length: 236 in
Material: Textile
Materials:
Aluminum/Oak
Black lacquered aluminum/Rosewood
Copper/Rosewood
Weight: 4.4 lb
Socket: E26 max 100W

PM-02

Design: Paul McCobb, 1950

Proving that simple can be beautiful, the thoughtful, practical PM-02 table lamp design emits diffused light from its hand-blown opal glass shade to create a warm, atmospheric glow. The three-legged base in solid untreated brass or black lacquered steel provides an elegant contrast to the cylindrical shade.

Isolation class: Class II
IP rating: IP20 (Dry location)
Certification: cULus



Color: Opal/Black
Item: 82719808



Color: Opal/Brass
Item: 82719618

Category: Table lamp
Dimensions:
Height: 12.3 in
Diameter: 5.3 in
Cord specifications:
Length: 98 in
Color: Black
Material: Textile
Materials:
Shade: Opal glass
Base: Black lacquered steel/
Brass (untreated)
Weight: 4 lb
Socket: E26 max 60W

SUSPENCE™

Design: GamFratesi, 2013

In the making of the Suspence™ lamp series, the designers sought to translate movement into a physical shape: a water droplet suspended in air. The final form appears as an uninterrupted whole, enhanced by its monochrome expression and natural soft curve.

Isolation class: Class II
IP rating: IP20 (Dry location)
Certification: cULus
Canopy: Black (Black, Copper, Pale Pearl), White (White, Light Grey, Powder Burgundy)



Color: White
Cord: White
Item: 74708405



Color: Light Grey
Cord: Matt Light Grey
Item: 74708612



Color: Black
Cord: Black
Item: 74708508

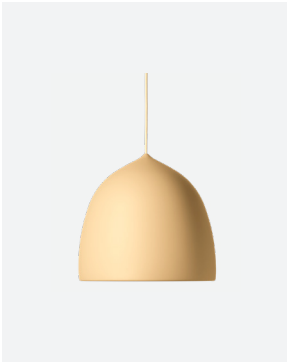
Category: Pendant
Model: P1
Dimensions:
Height: 8.8 in
Diameter: 9.4 in
Cord specifications:
Length: 236 in
Material: PVC
Materials:
Shade: Aluminum, Polished copper
Diffuser: Polycarbonate (PC)
Weight: 2,2 lb (Copper: 3,1 lb)
Socket: E26 max 50W



Color: Copper
Cord: Black
Item: 74708725



Color: Light Grey
Cord: Matt Light Grey
Item: 84718512



Color: Pale Pearl
Cord: Pale Pearl
Item: 84718402



Color: Powder Burgundy
Cord: Powder Burgundy
Item: 84718301

Category: Pendant
Model: P1.5
Dimensions:
Height: 11.7 in
Diameter: 12.6 in
Cord specifications:
Length: 236 in
Material: PVC
Materials:
Shade: Aluminum
Diffuser: Polycarbonate (PC)
Weight: 2,1 lb
Socket: E26 max 50W

SUSPENCE™

Design: GamFratesi, 2013

In the making of the Suspence™ lamp series, the designers sought to translate movement into a physical shape: a water droplet suspended in air. The final form appears as an uninterrupted whole, enhanced by its monochrome expression and natural soft curve.

Isolation class: Class II
IP rating: IP20 (Dry location)
Certification: cULus
Canopy: Black (Black, Copper),
White (White, Light Grey)



Color: White
Cord: White
Item: 74708805



Color: Light Grey
Cord: Matt Light Grey
Item: 74709012



Color: Black
Cord: Black
Item: 74708908



Color: Copper
Cord: Black
Item: 74709125

Category: Pendant
Model: P2
Dimensions:
Height: 14.2 in
Diameter: 15.1 in
Cord specifications:
Length: 236 in
Material: PVC (w. wire for Copper)
Materials:
Shade: Aluminum, Polished copper
Diffuser: Polycarbonate (PC)
Weight: 3,7 lb (Copper: 6,8 lb)
Socket: E26 max 100W



FRITZ HANSEN INC

22 Wooster St.
10013 New York
United States
Tel: 1 (212) 219-3226

GET IN TOUCH

SALES - NORTH AMERICA
info@fritzhanzen.com
Tel: 212 219 3226

PRESS - GLOBAL
press@fritzhanzen.com

LEARN MORE

NEWSLETTER
Sign up at:
fritzhanzen.com/sign-up

DOWNLOADS
Find 2D & 3D files, imagery,
product facts and much
more at:
downloads.fritzhanzen.com

FOLLOW US

INSTAGRAM
@fritzhanzen

PINTEREST
@fritzhanzen

FACEBOOK
Fritz Hansen

LINKEDIN
Fritz Hansen

