
WATER TANKER LINE



 **ANTHOR**[®]
INTERNATIONAL

Welcome to Amthor's Water Tanker Line

AMTHOR OFFERS A VARIETY OF TANKS TO MEET THE NEEDS OF EVERYONE IN THE WATER/ DUST CONTROL INDUSTRY

Amthor International has the largest variety of tank trucks for the water / dust control industry. Each tank is custom built right here in America by our dedicated workers. We set the industry standard in fully customizable tanker trucks. Each of our products can be fully customized to meet all of your business' needs. We also have an array of tank options that can increase the safety and efficiency of your tank. Any combination of tank options and chassis can be made to your tanker at Amthor International.

With innovation as our foundation, Amthor International constantly strives to make cutting edge industry innovations including patents and improvements to existing products, improving employee training and education, and improving communication with customers through technology. Our extended network of dealers, distributors, and repair locations ensures quick and reliable service wherever you may be.

As a family owned and operated company, the Amthor family takes pride in each and every one of our products. That's because every tank that rolls out of our facility bears the Amthor name. Hands on owners Butch and Brian Amthor are always available throughout every step of the process to ensure your tank is built to the highest standards.

Amthor International has everything you need under one roof. Get in house financing with our sister company Horizon Capital Services. We are able to finance your unit on the spot and offer a simple, one page application with quick approvals and turnarounds. Financing is available on new and preowned units with low rates, terms up to 72 months, 100% financing, skip and seasonal payments, and other unusual and special situations.



At Amthor International, we are more than made in America. We are reliable solutions keeping you on the road.

Sincerely,

Two handwritten signatures in black ink. The first signature is "Brian Amthor" and the second is "Arnold 'Butch' Amthor".

Brian and Arnold "Butch" Amthor

**CALL TODAY
TO ORDER YOUR
WATER TANKER TRUCK!**

434.656.6233

AmthorInternational.com

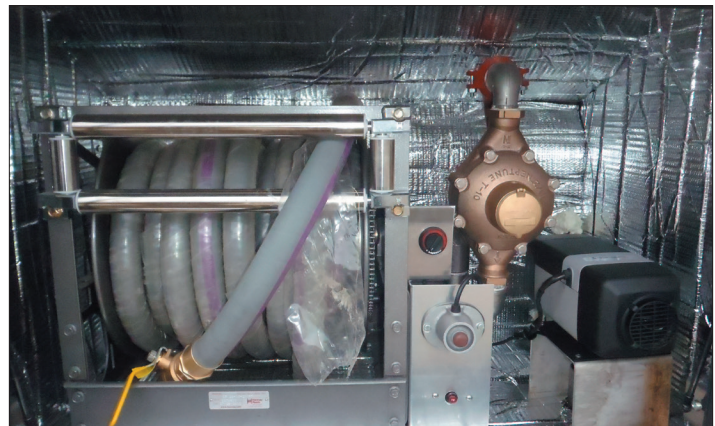




POTABLE WATER TANKERS

Uses for our Potable Water Tankers include bulk potable water delivery, emergency response and disaster relief, usage for large crowds and events, delivery to remote locations with limited water supply, filling swimming pools and much more. Our tanks transport water that is dispensed through a pumping system and hose reel for delivery. Made from a complete stainless steel construction and an NSF approved pumping system and a food grade dispensing system our units ensure a safe delivery of potable water.

- Tanks available from 500 to 8,000 gallons
- Choose from Amthor Cardinal or Monarch Champion tank models
- Full stainless steel construction
- Rear mounted hydrant fill with an air space and screen
- Offset baffle opening to prevent sloshing
- Numerous chassis options are available
- Heated and insulated tank options available



Heated and insulated cabinet with food grade metering and dispensing system



1,200 gallon stainless steel potable water truck with side delivery cabinets



NON POTABLE WATER TANKERS

Our Non Potable Water Tankers are specifically designed to deliver water in the most efficient ways. We offer several different types of spray heads and nozzles to ensure you get the best water dispensing option available on the market. We offer steel, stainless steel, or aluminum construction to better suit the application of your tank. Our tanks are ideal for dust suppression at construction sites and race tracks, street cleaning, highway maintenance and much more.

- Tanks available from 500 to 8,000 gallons
- Choose from Amthor Cardinal or Monarch Champion tank design
- Available in steel, stainless steel and aluminum
- Offset baffle opening to prevent sloshing
- Chassis frame mounted rear platform area
- Numerous spray head, bar and nozzle options available
- Rear mounted hydrant fill with an air space and screen
- Numerous chassis options are available



Rear aluminum extruded platform platform to house dispensing equipment and a curbside rear hydrant fill



A pair of front mounted dual spray heads underneath the front bumper



Aluminum non-potable water tank with a top mounted spray cannon, side mounted spray heads, rear spray bar, and rear platform



Stainless Steel Non-Potable water tanker with a rear step platform and a top adjustable work area with a vertical and horizontal spray bar to clean out tunnels



Steel non-potable water tanker with hose reel and pump on a raised platform with rear LED directional traffic advisory bar sign



Steel Non-Potable water tanker with a rear sweeper



Aluminum Non-Potable water tank with a surrounding enclosure and a rear dispensing area



Aluminum Non-Potable water tanker with a driver side swing arm with built in spray heads



Stainless steel non-potable water tanker with hose reel and pump on a raised platform with rear LED directional traffic advisory bar sign and front and side mounted spray heads



Steel non-potable water tank with raised spray heads and rear platform



“The Wolverine” Fire Tanker

Amthor’s “Wolverine” fire tankers have a pumping system that allows for water to be pumped from a pond, river, or fire hydrant if water is depleted from the tank. It also has the ability to fill porta ponds as well. Aluminum and stainless steel tanks are available with full skirting and cabinet options with roll up doors. Each fire tanker truck can be customized with several options for pumping equipment with various GPM’s, lighted gauge panels, cab console to house switches for various lights and siren packages, cabinetry, and skirting.

- Tanks available up to 5,000 gallons
- Tank constructed from aluminum or stainless steel
- Various light and sirens packages are available
- Cab console between seats holds sirens and switches
- Lighted black vinyl gauge panel
- Tank fully skirted with polished fenderettes
- One 10” rear stainless steel Newton dump valve with an extendable chute
- Mounted cabinets on both sides of tank with roll-up doors
- Numerous chassis options are available



Pump module mounted behind cab with top hose storage



Full side skirting with built in cabinets with roll-up door



Waterbeds

Amthor waterbed tankers, or well drilling rigs, deliver water to construction sites and ground wells for cooling purposes. Our flatbed water tanks are available in steel, stainless steel, and aluminum. These specialized well drilling rigs are extremely heavy duty to withstand off-road use. Customizable features include full internal baffling with heat tubes, heavy duty crane and winch options, and several different types of cabinet options. Built to the highest standards, our waterbed tankers are designed to handle the rigorous terrain they operate in and made to outlast the elements.

- 500 to 3,500 gallons
- Body construction in carbon steel, stainless steel or aluminum
- Various tool box configurations available with aluminum extruded cabinet doors
- Front fuel tanks available from 100 to 500 gallons
- Full internal baffling with heat tubes
- 16 standard recessed stakes and pockets
- Durable scratch resistant coating on deck lid
- Heavy duty crane and winch options
- Epoxy lined interior



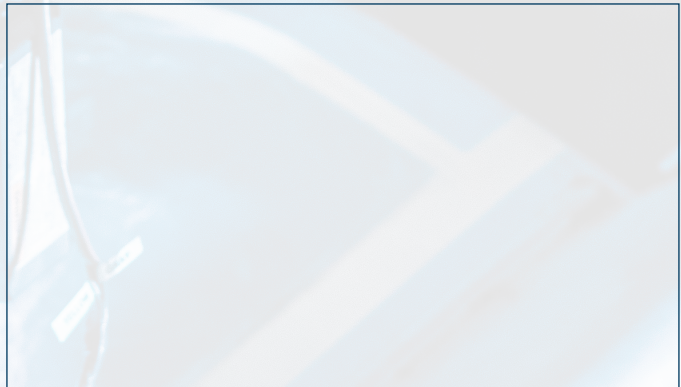
Several different types of crane makes and models available with various lifting capacities



Body mounted vertical or horizontal storage compartments

MORE THAN MADE IN AMERICA

TANKS DISTRIBUTED BY:



Reliable Solutions Keeping You On The Road
434.656.6233 • AmthorInternational.com