

# \$1,045,000

# mikegreerhomes

## Clyde

Lot 35 Sunderland Park, Clyde



# for sale

dwelling size	section size
156 m <sup>2</sup>	428 m <sup>2</sup>

homes  
for  
sale

This stylish 4 double bedroom home with a open plan design has an easy care section that is fully landscaped and ideal for relaxing and entertaining. All of the bedrooms are well appointed, with a separate family bathroom and ensuite. The home has been finished to a high standard with quality fixtures and fittings throughout.

Sitting North West of the Clutha river is the small and perfectly preserved goldmining town of Clyde. Clyde is perfect for those who love the feel and the views of Central Otago but want to reside in a smaller town with a relaxed pace. Sunderland Park is located in the heart of Clyde's township and offers those iconic Central Otago mountain views with the Clutha River just down the road.

Offering world class cycling trails and vineyards in every direction, Clyde is a great place to enjoy an easy lifestyle in a scenic setting that's rich in history.

### more features.

- ✚ Designer Kitchen
- ✚ Ensuite
- ✚ 10 Year Registered Master Build Guarantee
- ✚ Walk-in Wardrobe



A Turn Key home is an all-inclusive package that only requires 10% deposit.





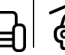
bringing you **more**

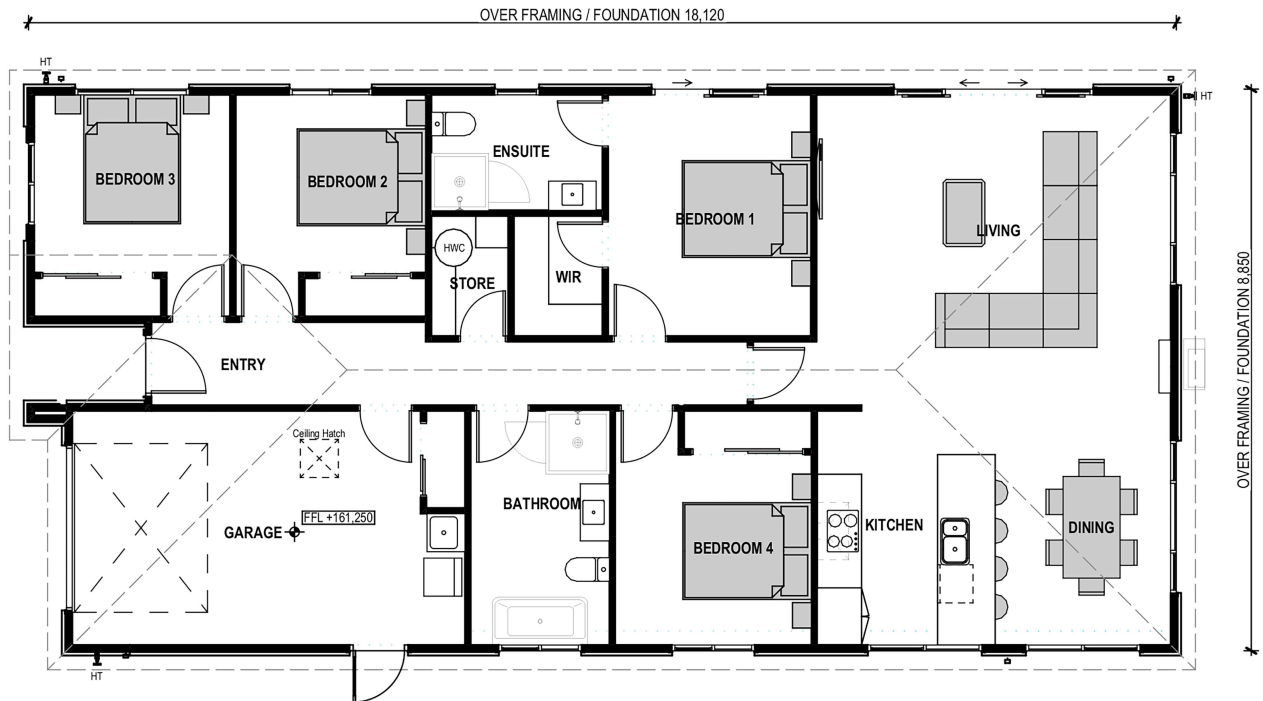
03 443 2065

[mikegreerhomes.co.nz](http://mikegreerhomes.co.nz)

## Sunderland Park Lot 35 Sunderland Park, Clyde

**CO0949**


dwelling size	section size	4	2	2	1	1
156 m <sup>2</sup>	428 m <sup>2</sup>					



### After Sales Care

At Mike Greer Homes we are committed to making the build journey as stress-free as possible. Our After Sales Care programme addresses any maintenance issues and ensures that any remedial work is undertaken once it is logged and approved.

Disclaimer. While every reasonable effort has been made by Mike Greer Homes to ensure the information correctly illustrates the dwelling and section, this material may only be used by the Purchaser for illustrative and guidance purposes. Mike Greer Homes accepts no responsibility for any differences, errors or omissions which may become apparent during or on completion of the dwelling.

