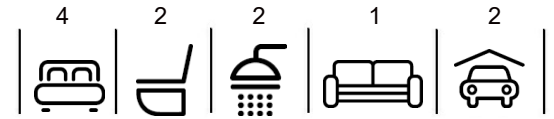


\$699,000

mikegreerhomes

Ashburton

Lot 155 Strowan Fields



for sale

dwelling size | section size
172 m² | 500 m²

homes
for
sale

This four double bedroom, double garage, fully landscaped home has been designed to maximise space and sun. The North-facing open plan living, dining and kitchen area forms the centre of the home and offers great indoor/outdoor flow. The well-appointed family bathroom and ensuite both feature quality fixtures and fittings that complement the spacious bedroom and living areas.

Whether you're starting out or slowing down, growing your portfolio or expanding your family, Strowan Fields is the ideal place to take the next step on your property journey. With manageable sections, a picture-perfect setting and a strong sense of community, it's the ideal spot to invest in your future. At its core, the Strowan Fields vision is a simple one – to create a community of quality homes with beautiful streetscapes, plenty of green spaces, and lots of breath-taking views!

more features.

- +
- +
- +
- +
- +
- +

Home and Land Package

A Home and Land Package is a section and home combination with finance options available.

Special T&C's apply to this package.

bringing you **more**

03 688 3675


mikegreerhomes.co.nz

Strowan Fields Lot 155 Strowan Fields

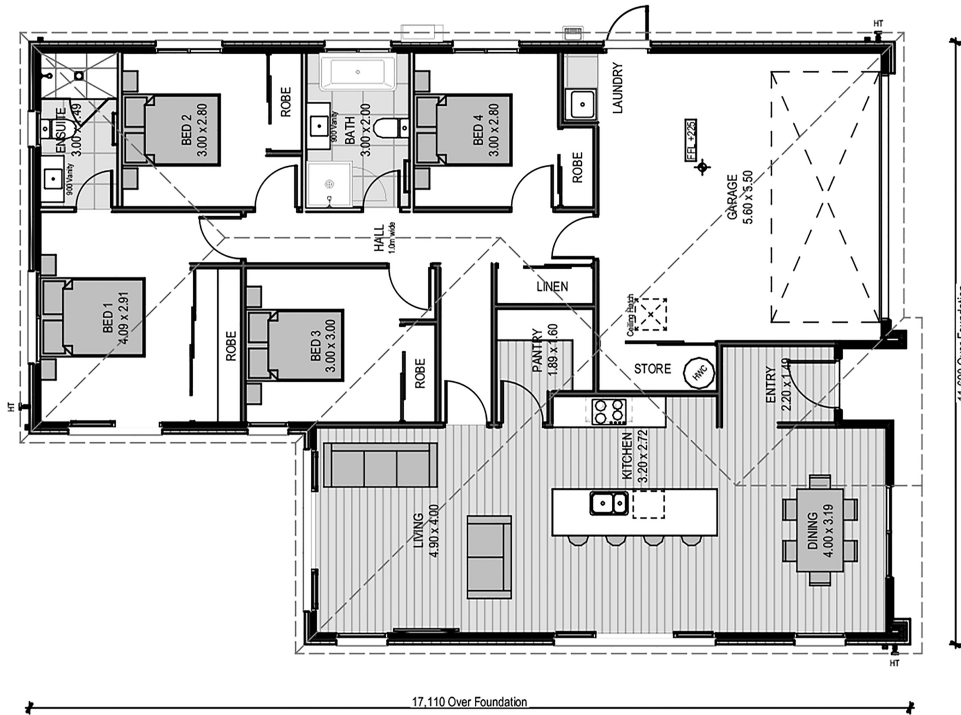
dwelling size | section size

172 m² | 500 m²

4 2 2 1 2




M0482



After Sales Care

At Mike Greer Homes we are committed to making the build journey as stress-free as possible. Our After Sales Care programme addresses any maintenance issues and ensures that any remedial work is undertaken once it is logged and approved.

Disclaimer. While every reasonable effort has been made by Mike Greer Homes to ensure the information correctly illustrates the dwelling and section, this material may only be used by the Purchaser for illustrative and guidance purposes. Mike Greer Homes accepts no responsibility for any differences, errors or omissions which may become apparent during or on completion of the dwelling.

