

\$849,000

mikegreerhomes

Prebbleton

Lot 28 Trices Road, Prebbleton



for sale

dwelling size | section size
155 m² | 400 m²

homes
for
sale

Perfect for families and entertaining, this home is designed to maximise space and sun. The open plan living, dining and kitchen area is the centre of the home, and offers a great outlook onto the easy care section. With three double bedrooms, a family bathroom and ensuite, the house combines great functionality with a stylish feel. The home has an internal access double garage, and the section is fully landscaped with all fencing and driveways included.

This new subdivision is positioned on the corner of Trices and Birchs Road in an increasingly sought-after area. Enjoy the vibrant village atmosphere of Prebbleton, with an array of dining options and amenities at Prebbleton Village and Fresh Choice Supermarket, all within a five-minute drive. Kakaha Park is 1km away, featuring cycle tracks, a playground, sports field and a dog park. Christchurch City is an easy commute via the Southern Motorway.

more features.

- +
- +
- +
- +
- +
- +








A Turn Key home is an all-inclusive package that only requires 10% deposit.

bringing you **more**

03 354 0166

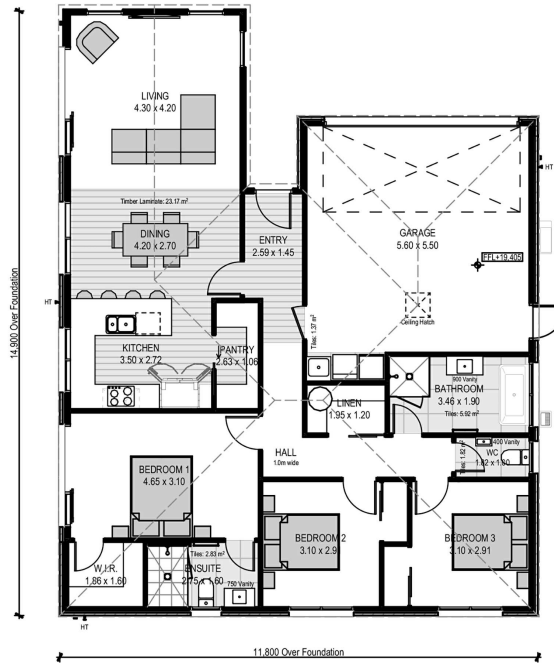
mikegreerhomes.co.nz

Trices Road Lot 28 Trices Road, Prebbleton

dwelling size	section size	3	2	2	1	2
155 m ²	400 m ²					



CT7680



After Sales Care

At Mike Greer Homes we are committed to making the build journey as stress-free as possible. Our After Sales Care programme addresses any maintenance issues and ensures that any remedial work is undertaken once it is logged and approved.

Disclaimer. While every reasonable effort has been made by Mike Greer Homes to ensure the information correctly illustrates the dwelling and section, this material may only be used by the Purchaser for illustrative and guidance purposes. Mike Greer Homes accepts no responsibility for any differences, errors or omissions which may become apparent during or on completion of the dwelling.

