

\$966,000

mikegreerhomes

Richmond

Lot 10 Pukerua, Richmond



Artist Impression Only

for sale

dwelling size | section size
165 m² | 508 m²

homes
for
sale

Introducing our stunning new 3-bedroom, 2-bathroom family home on Lot 10, Pukerua Subdivision. This thoughtfully designed house and land package offers the perfect blend of modern living and comfort. Enjoy spacious interiors flooded with natural North facing sun, a stylish kitchen equipped with premium appliances, and a luxurious master suite for ultimate relaxation. With ample room for the whole family to thrive and entertain, this is the ideal setting to create lasting memories.

The new Pukerua subdivision near the Richmond Hills seamlessly connects outdoor living with the conveniences of urban life. Boasting proximity to scenic walking tracks and the newly announced New World Supermarket, residents will relish in the ease of accessing everyday essentials whilst indulging in all that the great outdoor Tasman Region has to offer. Situated within arms reach of schools, daycare facilities, and nestled in a rapidly growing area, Pukerua offers the epitome of modern convenience.

more features.

- +
- +
- +
- +
- +
- +
- +
- +

Turn Key






A Turn Key home is an all-inclusive package that only requires 10% deposit.

bringing you **more**

03 544 7873

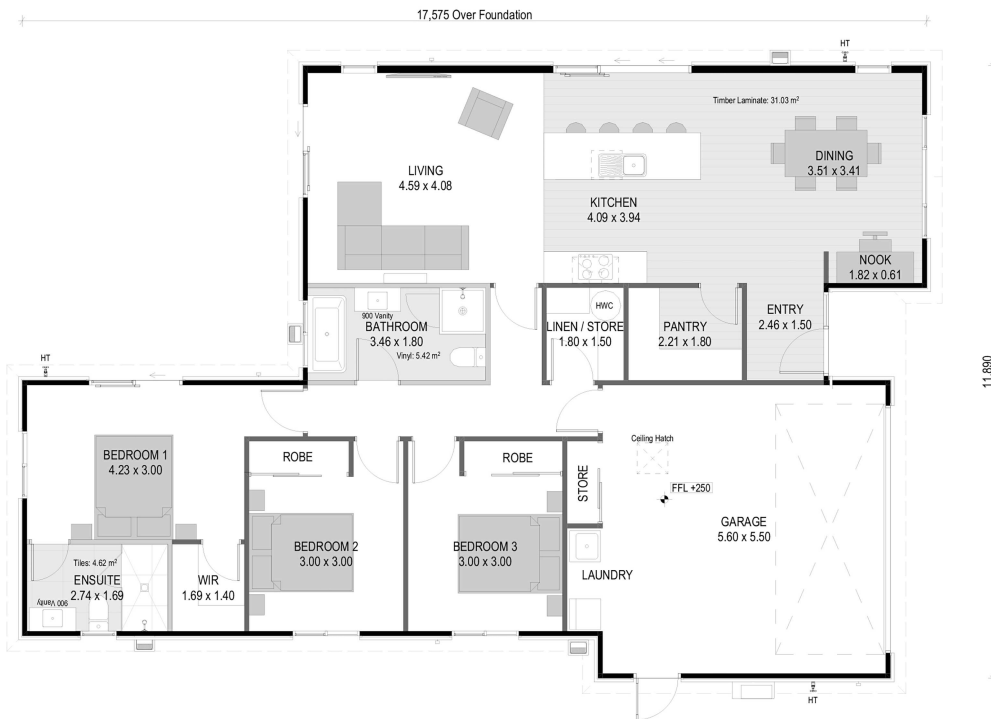
mikegreerhomes.co.nz

Pukerua Lot 10 Pukerua, Richmond

dwelling size	section size	3	2	2	1	2
165 m ²	508 m ²					

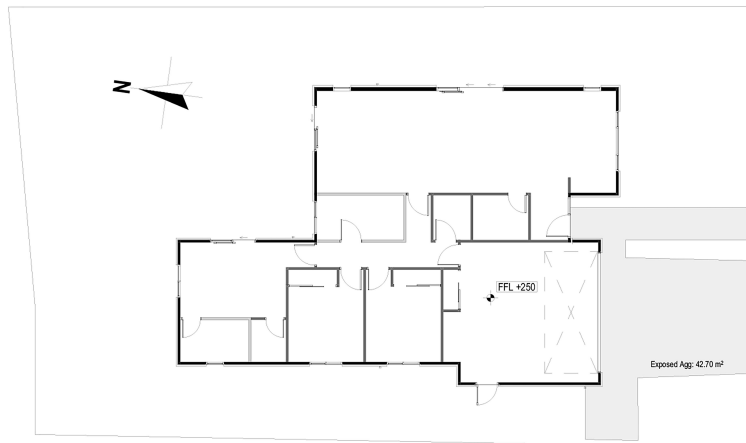


NL0610



After Sales Care

At Mike Greer Homes we are committed to making the build journey as stress-free as possible. Our After Sales Care programme addresses any maintenance issues and ensures that any remedial work is undertaken once it is logged and approved.



Disclaimer. While every reasonable effort has been made by Mike Greer Homes to ensure the information correctly illustrates the dwelling and section, this material may only be used by the Purchaser for illustrative and guidance purposes. Mike Greer Homes accepts no responsibility for any differences, errors or omissions which may become apparent during or on completion of the dwelling.