

# \$799,000

# mikegreerhomes

## Prebbleton

Lot 6 Trices Road



Artist Impression Only

# for sale

dwelling size | section size  
159 m<sup>2</sup> | 348 m<sup>2</sup>

homes  
for  
sale

This stylish three double bedroom home has a spacious open plan design and a North facing easy care section that is fully landscaped and ideal for relaxing and entertaining. All of the bedrooms are well appointed, with a separate family bathroom and ensuite. The home has been finished to a high standard with quality fixtures and fittings throughout. It offers an internal access double garage and has all driveways and fencing included in the sale price.

This new subdivision is positioned on the corner of Trices and Birchs Road in an increasingly sought-after area. Enjoy the vibrant village atmosphere of Prebbleton, with an array of dining options and amenities at Prebbleton Village and Fresh Choice Supermarket, all within a five-minute drive. Kakaha Park is 1km away, featuring cycle tracks, a playground, sports field and a dog park. Christchurch City is an easy commute via the Southern Motorway.

### more features.

- +
- +
- +
- +
- +
- +
- +



Turn Key

A Turn Key home is an all-inclusive package that only requires 10% deposit.

bringing you **more**

03 354 0166

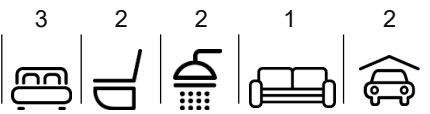
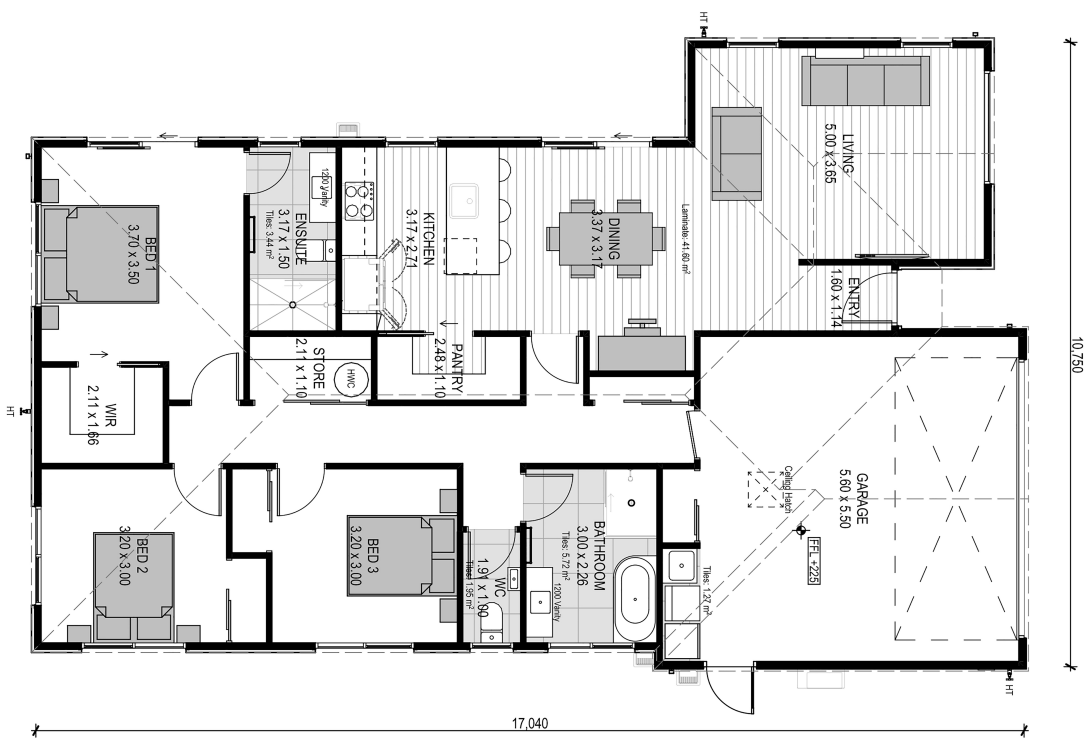
[mikegreerhomes.co.nz](http://mikegreerhomes.co.nz)

Trices Road Lot 6 Trices Road

dwelling size | section size

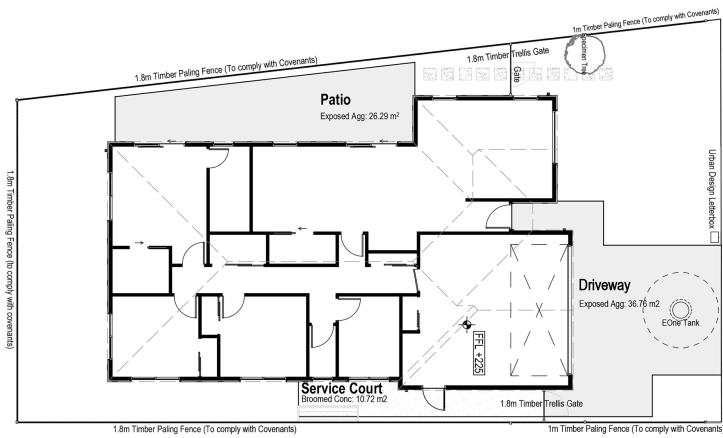
159 m<sup>2</sup> | 348 m<sup>2</sup>

3 2 2 1 2

**After Sales Care**

At Mike Greer Homes we are committed to making the build journey as stress-free as possible. Our After Sales Care programme addresses any maintenance issues and ensures that any remedial work is undertaken once it is logged and approved.



Disclaimer. While every reasonable effort has been made by Mike Greer Homes to ensure the information correctly illustrates the dwelling and section, this material may only be used by the Purchaser for illustrative and guidance purposes. Mike Greer Homes accepts no responsibility for any differences, errors or omissions which may become apparent during or on completion of the dwelling.