

\$899,000

mikegreerhomes

Halswell

Lot 11 Country Estates - 45 Podocarp Drive



for sale

dwelling size | section size
167 m² | 402 m²

homes
for
sale

At the heart of the home lies a spacious open-plan kitchen, dining, and living area a bright, light-filled hub that seamlessly connects to a private outdoor space and easily maintained gardens. This inviting setting offers the perfect place to relax in peace or spend quality time with family and friends, whether you're entertaining or simply enjoying everyday living.

Located in the heart of Halswell, this new subdivision blends modern living with the charm of a well-established community. Just 9km from central Christchurch, Halswell Country Estates offers a unique balance of space, serenity, and convenience — ideal for families, professionals, and lifestyle seekers alike. Residents enjoy easy access to parks, quality schools, shopping, and State Highway 75, all while being surrounded by the natural beauty of the Halswell area. It's a location that supports both a relaxed lifestyle and everyday practicality.

more features.

- + Ensuite
- + Fully Landscaped
- + Samsung Appliances
- + Separate WC
- + Tiled Shower
- + Walk-in Pantry
- + Walk-in Wardrobe



Turn Key

A Turn Key home is an all-inclusive package that only requires 10% deposit.

bringing you more






03 354 0166

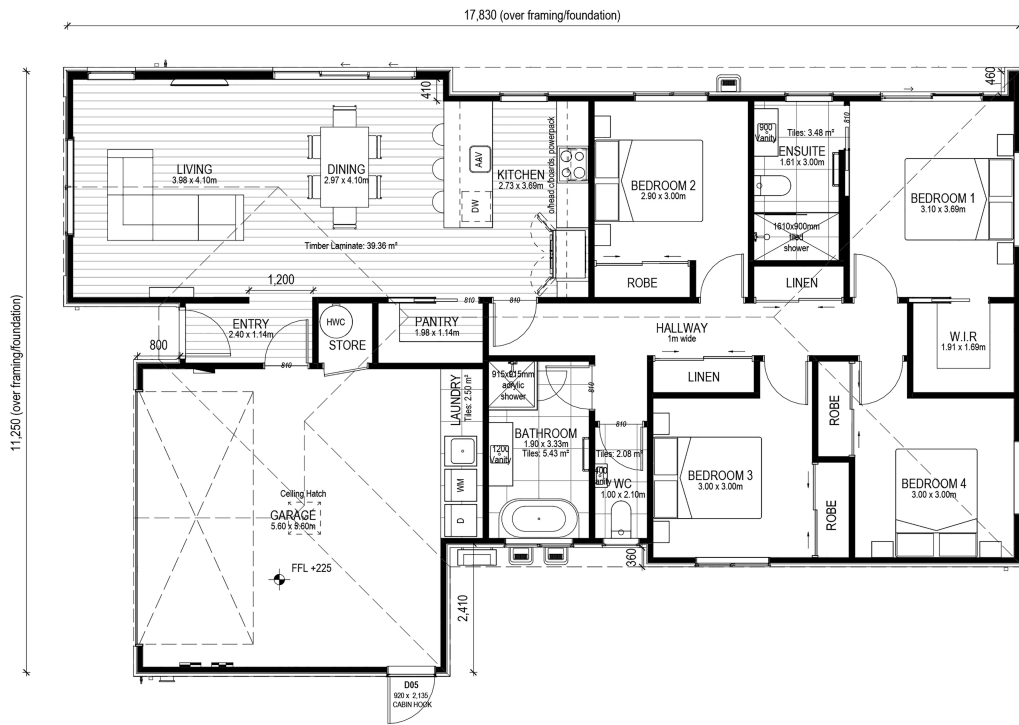
mikegreerhomes.co.nz

Country Estates Lot 11 Country Estates - 45 Podocarp Drive

CT8426



dwelling size	section size	4	2	2	1	2
167 m ²	402 m ²					



After Sales Care

At Mike Greer Homes we are committed to making the build journey as stress-free as possible. Our After Sales Care programme addresses any maintenance issues and ensures that any remedial work is undertaken once it is logged and approved.

Disclaimer. While every reasonable effort has been made by Mike Greer Homes to ensure the information correctly illustrates the dwelling and section, this material may only be used by the Purchaser for illustrative and guidance purposes. Mike Greer Homes accepts no responsibility for any differences, errors or omissions which may become apparent during or on completion of the dwelling.

