

\$569,000

 **mikegreerhomes**

Christchurch Central

Townhouse 7, 291-293 Hereford Street



for sale

dwelling size

70 m²

**homes
for
sale**

This two storey home features an open plan kitchen, dining and living, separate laundry and under stairs storage on the ground floor and two generous bedrooms, a bathroom and storage cupboard on the first floor.

Located within the main Avenues of Christchurch City, Hereford Street offers a unique blend of urban convenience and vibrant community life. Nestled close to the heart of the city, residents enjoy easy access to a variety of cafes, restaurants and shops, making it a lively place to call home. The area is also known for its beautiful parks and recreational spaces, perfect for outdoor activities and relaxation. With excellent public transport links and proximity to key amenities, Hereford Street provides an ideal setting for anyone looking to embrace the city's atmosphere.

more features.

- +
- +
- +
- +
- +
- +

Turn Key

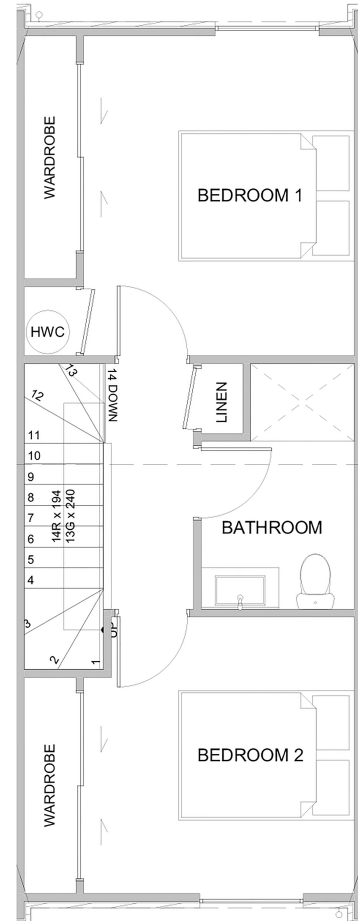
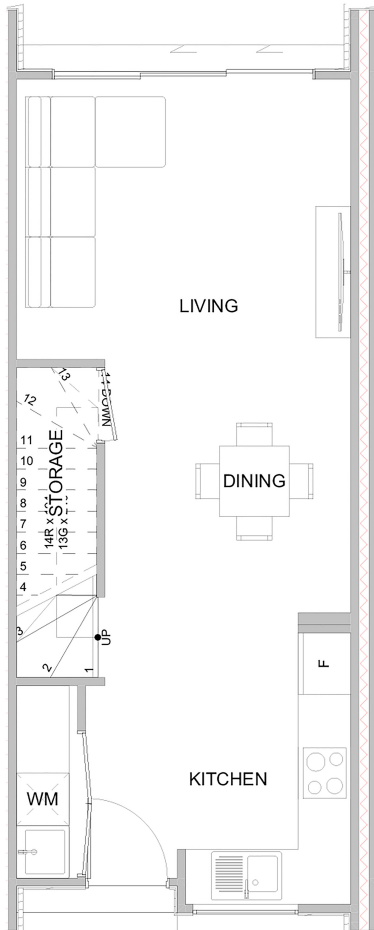
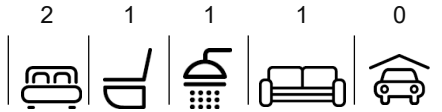
A Turn Key home is an all-inclusive package that only requires 10% deposit.

bringing you **more**

mikegreerhomes.co.nz

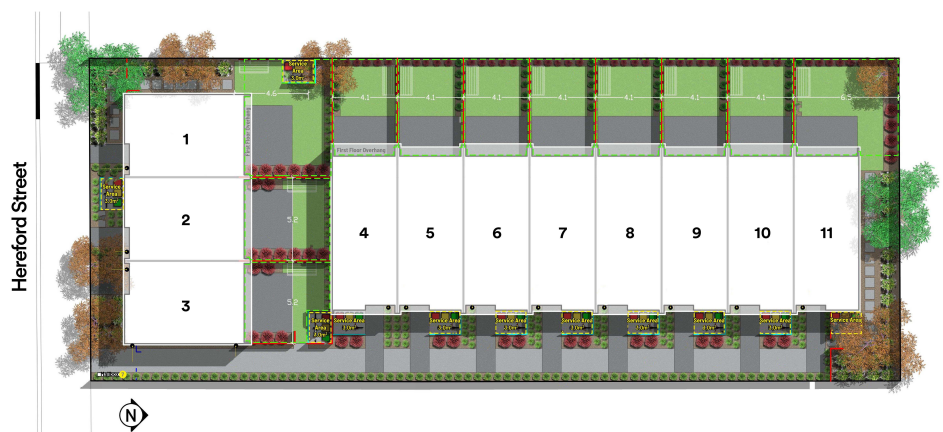
Hereford Street Townhouse 7, 291-293 Hereford Street

dwelling size
70 m²



After Sales Care

At Mike Greer Homes we are committed to making the build journey as stress-free as possible. Our After Sales Care programme addresses any maintenance issues and ensures that any remedial work is undertaken once it is logged and approved.



Disclaimer. While every reasonable effort has been made by Mike Greer Homes to ensure the information correctly illustrates the dwelling and section, this material may only be used by the Purchaser for illustrative and guidance purposes. Mike Greer Homes accepts no responsibility for any differences, errors or omissions which may become apparent during or on completion of the dwelling.