

\$969,000

mikegreerhomes

Silverdale

T9, 36 Henry Tayler Rise - Milldale



for sale

dwelling size | section size
150 m² | 173 m²

homes
for
sale

This attractive three double bedroom, two bathroom townhouse has a spacious and practical floor plan that would suit a range of people and lifestyles. An open plan living/dining/kitchen area offers easy access to the outdoor entertaining area within the fully landscaped section. The townhouse also offers an internal access garage and quality fixtures and fittings throughout.

Situated 25 minutes north of Auckland City, Milldale is a gently undulating valley that is drenched in northerly sun. Thanks to the popularity of Millwater, everything to make yourself at home is already right at your doorstep. Moments away from the expanding Silverdale, Highgate Business Park and Silverdale Industrial Centre, residents are in zone for several public and private schools. Enjoy a growing number of cafes and restaurants, plus world class recreational and medical facilities, offering easy access to all the amenities, providing the option to live, work and play in your own backyard.

 **Turn Key**

A Turn Key home is an all-inclusive package that only requires 10% deposit.

more features.




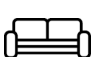

- ✦ Close to Local Amenities
- ✦ Designer Kitchen
- ✦ Ensuite
- ✦ Fully Landscaped
- ✦ 10 Year Registered Master Build Guarantee
- ✦ Open Plan Living
- ✦ Samsung Appliances

bringing you **more**

09 280 4694

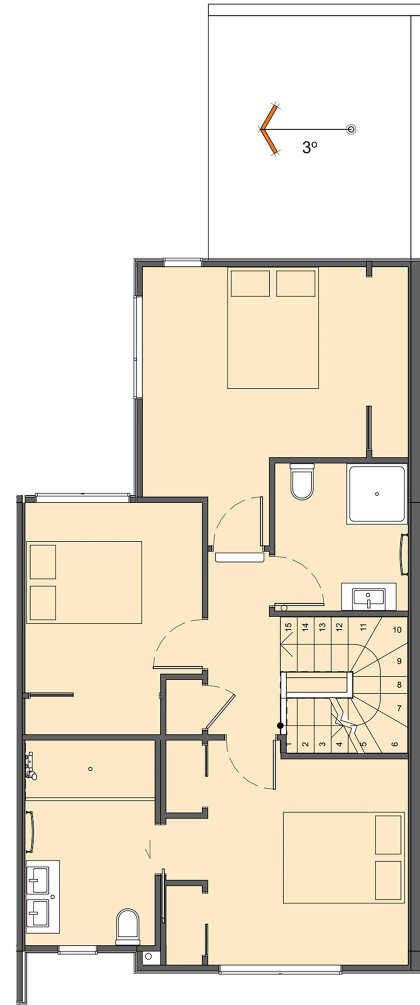
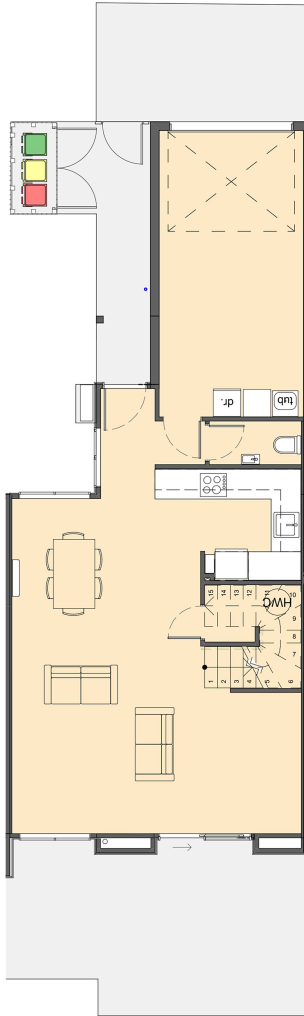
mikegreerhomes.co.nz

Stage 2G T9, 36 Henry Tayler Rise - Milldale

dwelling size	section size	3	3	2	1	1
150 m ²	173 m ²					



UA06861



After Sales Care

At Mike Greer Homes we are committed to making the build journey as stress-free as possible. Our After Sales Care programme addresses any maintenance issues and ensures that any remedial work is undertaken once it is logged and approved.

Disclaimer. While every reasonable effort has been made by Mike Greer Homes to ensure the information correctly illustrates the dwelling and section, this material may only be used by the Purchaser for illustrative and guidance purposes. Mike Greer Homes accepts no responsibility for any differences, errors or omissions which may become apparent during or on completion of the dwelling.

