

\$858,000

 **mikegreer**homes

Cromwell

Lot 418 Wooing Tree Estate, Central Otago District



Artist Impression Only

for sale

| | |
|--------------------|--------------------|
| dwelling size | section size |
| 115 m ² | 283 m ² |

**homes
for
sale**

Offering 3 double bedrooms and an open plan living, kitchen and dining area, this home is perfectly designed to maximise space and indoor/outdoor flow. The home features an internal access garage and a private section perfect for entertaining. Complementing the living and bedroom spaces is a well appointed family bathroom with quality fixtures and fittings.

Fringed by vines, this new development will retain and celebrate its unique location, with pride of place reserved for the iconic Wooing Tree. The vineyard and its cellar door will remain a key focus of the development, the beating heart of the wonderful new neighbourhood. The development will also be supported by carefully selected hospitality and retail businesses that will promote the local wine and tourism industry.

more features.

- ✚ Driveway and Patios Included
- ✚ 10 Year Registered Master Build Guarantee
- ✚ Open Plan Living
- ✚ Smeg Appliances
- ✚ Single Car Garaging
- ✚ Tiled Floors to Wet Areas



Turn Key

A Turn Key home is an all-inclusive package that only requires 10% deposit.






bringing you **more**

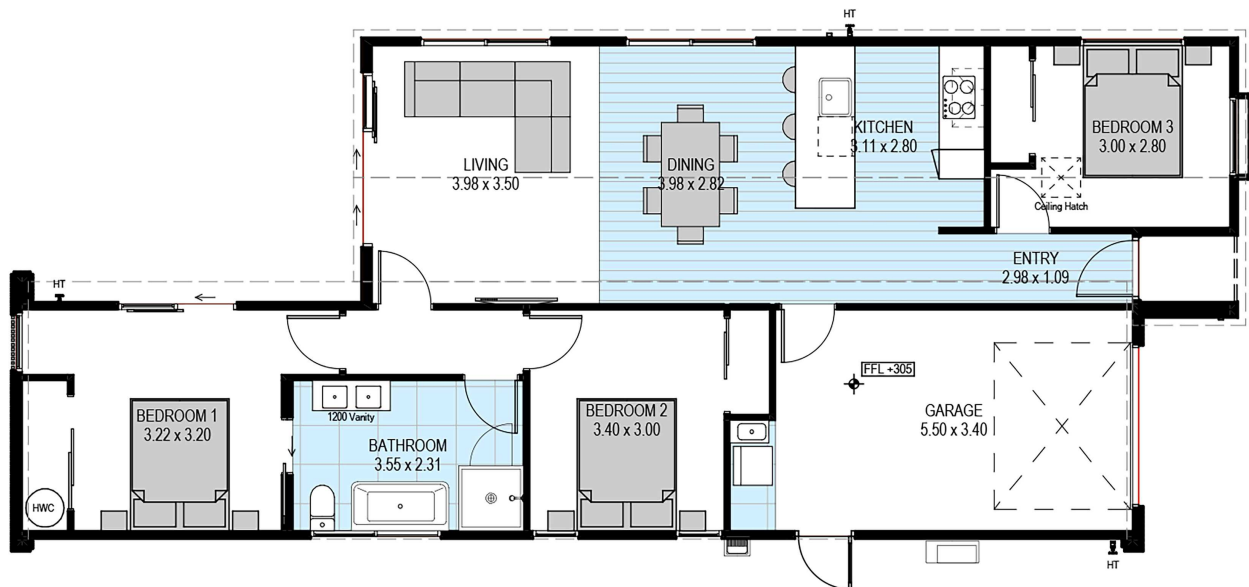
03 443 2065

mikegreerhomes.co.nz

Wooving Tree Estate Lot 418 Wooving Tree Estate, Central Otago District

CO0902

| | | | | | | |
|--------------------|--------------------|---|---|---|---|---|
| dwelling size | section size | 3 | 1 | 1 | 1 | 1 |
| 115 m ² | 283 m ² |  |  |  |  |  |



After Sales Care

At Mike Greer Homes we are committed to making the build journey as stress-free as possible. Our After Sales Care programme addresses any maintenance issues and ensures that any remedial work is undertaken once it is logged and approved.

Disclaimer. While every reasonable effort has been made by Mike Greer Homes to ensure the information correctly illustrates the dwelling and section, this material may only be used by the Purchaser for illustrative and guidance purposes. Mike Greer Homes accepts no responsibility for any differences, errors or omissions which may become apparent during or on completion of the dwelling.

