

\$940,000

 **mikegreerhomes**

Helensburgh

Lot 2 Flagstaff, Helensburgh, Dunedin



for sale

dwelling size	section size
138 m ²	402 m ²

**homes
for
sale**

This stylish 3 double bedroom home has a spacious open plan design and a North facing easy care section that is ideal for relaxing and entertaining. All of the bedrooms are well appointed, with a separate family bathroom and ensuite. The home has been finished to a high standard with quality fixtures and fittings throughout. It offers an internal access single garage and includes patios and driveways.

Flagstaff rises above central Dunedin, offering stunning views of the city and surrounding landscapes overlooks the northwest of the city of Dunedin in New Zealand's South Island. Close to the city centre, close to schools, shops and cafes and local hikes and tracks.

more features.

- ⊕ Designer Kitchen
- ⊕ Godfrey Hirst Flooring
- ⊕ 10 Year Registered Master Build Guarantee
- ⊕ Samsung Appliances
- ⊕ Dulux Wash And Wear Paint



Home and Land Package

A Home and Land Package is a section and home combination with finance options available.




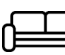

Special T&C's apply to this package.

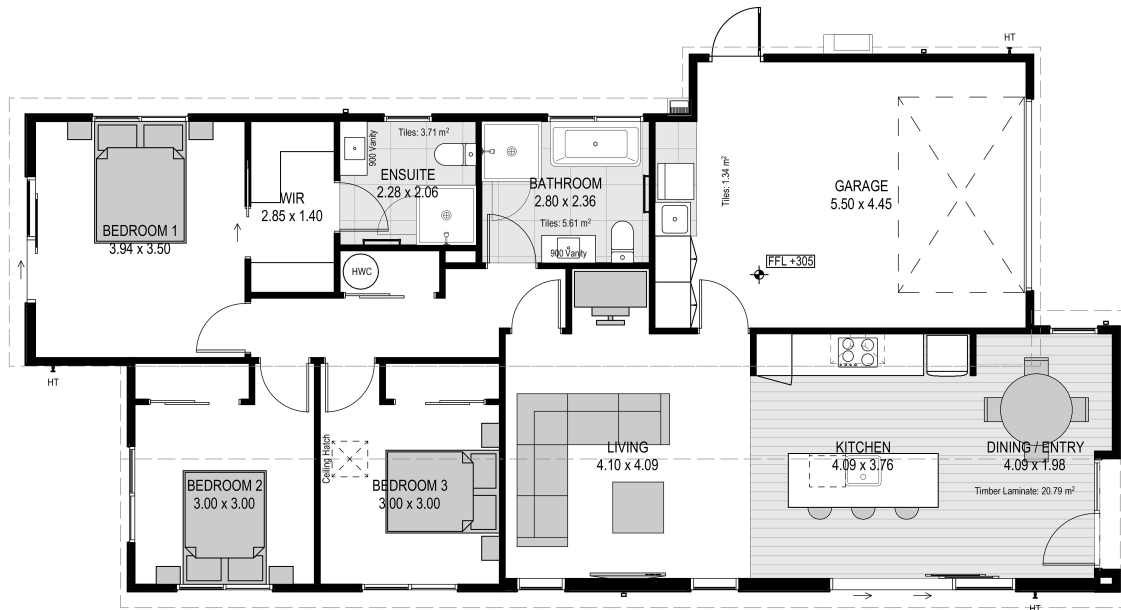
bringing you **more**

03 443 2065

mikegreerhomes.co.nz

Flagstaff - Dunedin Lot 2 Flagstaff, Helensburgh, Dunedin

dwelling size	section size	3	2	2	1	1
138 m ²	402 m ²					


DN1036


After Sales Care

At Mike Greer Homes we are committed to making the build journey as stress-free as possible. Our After Sales Care programme addresses any maintenance issues and ensures that any remedial work is undertaken once it is logged and approved.

Disclaimer. While every reasonable effort has been made by Mike Greer Homes to ensure the information correctly illustrates the dwelling and section, this material may only be used by the Purchaser for illustrative and guidance purposes. Mike Greer Homes accepts no responsibility for any differences, errors or omissions which may become apparent during or on completion of the dwelling.

