

# \$769,000

# mikegreerhomes

## Prebbleton

Lot 103 Hampton Grove - 12 Westhampton Drive



Artist Impression Only

# for sale

dwelling size | section size  
137 m<sup>2</sup> | 303 m<sup>2</sup>

homes  
for  
sale

This bright and airy three double bedroom home has a great open plan layout that flows nicely between the kitchen, dining, and living areas. The North facing, low maintenance backyard is fully landscaped perfect for chilling out. With a separate family bathroom plus an ensuite for extra convenience. This home is finished with quality fittings throughout, and it comes with an internal access single garage. Driveways and fencing are all included in the price. Ready to make it yours!

Hampton Grove sits right in the heart of Prebbleton, surrounded by quality homes and a great sense of community, this neighbourhood offers the perfect mix of country charm and everyday convenience. Local cafes, parks, and schools are just around the corner, with Prebbleton Village only minutes away. Plus, Christchurch CBD is only a 20-minute drive. Hampton Grove is an ideal choice for those looking to enjoy space, style, and long-term value in a semi-rural community.

### more features.

- +
- +
- +
- +
- +
- +
- +



Turn Key

A Turn Key home is an all-inclusive package that only requires 10% deposit.

bringing you more

03 354 0166

mikegreerhomes.co.nz

# Hampton Grove Lot 103 Hampton Grove - 12 Westhampton Drive

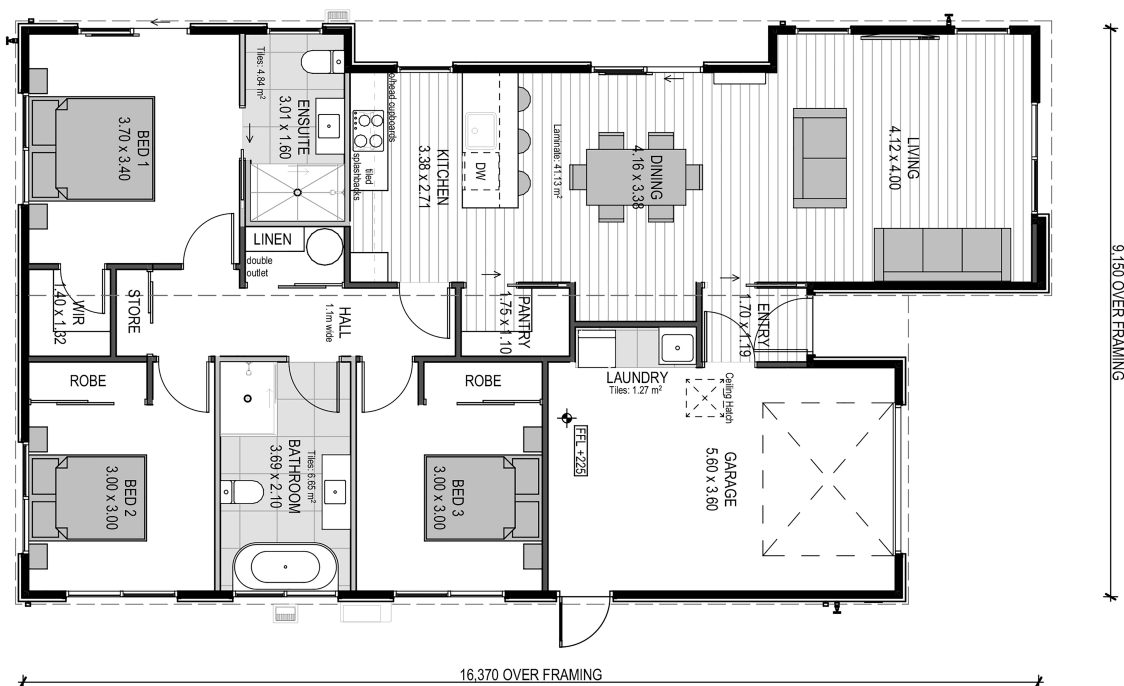
dwelling size | section size

137 m<sup>2</sup> | 303 m<sup>2</sup>

3 2 2 1 1



CT8108



## After Sales Care

At Mike Greer Homes we are committed to making the build journey as stress-free as possible. Our After Sales Care programme addresses any maintenance issues and ensures that any remedial work is undertaken once it is logged and approved.

Disclaimer. While every reasonable effort has been made by Mike Greer Homes to ensure the information correctly illustrates the dwelling and section, this material may only be used by the Purchaser for illustrative and guidance purposes. Mike Greer Homes accepts no responsibility for any differences, errors or omissions which may become apparent during or on completion of the dwelling.

