

\$899,000

mikegreerhomes

Halswell

Townhouse 4, El Patron Lane, Halswell Commons



for sale

| | |
|--------------------|--------------------|
| dwelling size | section size |
| 156 m ² | 306 m ² |

homes
for
sale

Situated in one of Christchurch's most popular subdivisions, this home is well suited for those looking for low maintenance, space and comfort. The home features three bedrooms, two bathrooms, open plan living and an internal access single garage. The home has been appointed with quality fixtures and fittings throughout, and the North-facing garden and courtyard area provides a quiet retreat.

Halswell Commons is located just 6km from Christchurch's city centre and a short drive to the Halswell shopping centre, supermarket, cafes and schools. Halswell Commons incorporates over 70 hectares of prime land and is perfectly positioned for exploring the Port Hills, Banks Peninsula and other nearby gems. Built on good, solid land, close to the city and where a naturally strong community exists already, Halswell Commons is well connected for a better way of living.

more features.

- ✚ Ensuite
- ✚ Fully Landscaped
- ✚ Samsung Appliances
- ✚ Stone Benchtop
- ✚ Tiled Floors to Wet Areas
- ✚ Walk-in Pantry



Turn Key





A Turn Key home is an all-inclusive package that only requires 10% deposit.

bringing you **more**

03 354 0166

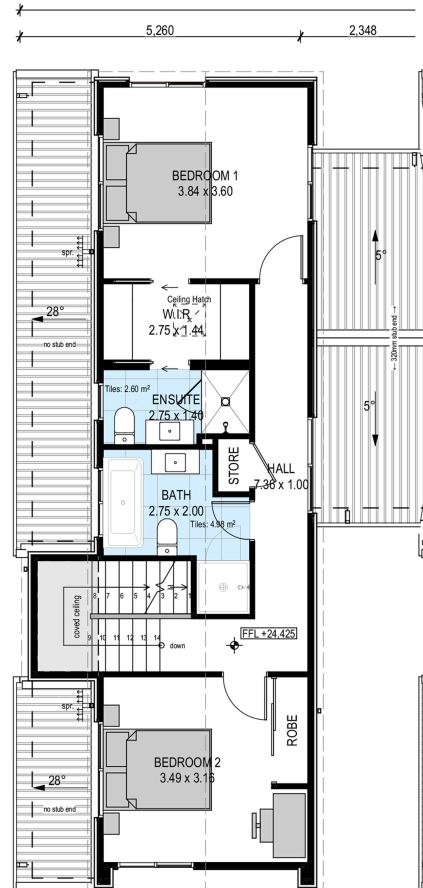
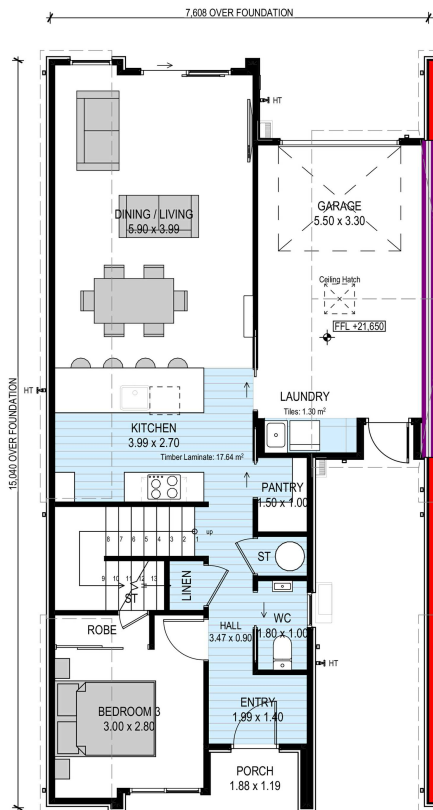
mikegreerhomes.co.nz

Stage 3C & 3D Townhouse 4, El Patron Lane, Halswell Commons

| dwelling size | section size | 3 | 3 | 2 | 1 | 1 |
|--------------------|--------------------|---|---|---|---|---|
| 156 m ² | 306 m ² |  |  |  |  |  |



CT7509a



After Sales Care

At Mike Greer Homes we are committed to making the build journey as stress-free as possible. Our After Sales Care programme addresses any maintenance issues and ensures that any remedial work is undertaken once it is logged and approved.

Disclaimer. While every reasonable effort has been made by Mike Greer Homes to ensure the information correctly illustrates the dwelling and section, this material may only be used by the Purchaser for illustrative and guidance purposes. Mike Greer Homes accepts no responsibility for any differences, errors or omissions which may become apparent during or on completion of the dwelling.

MONSARAZ BOULEVARD
(Proposed Collector Road)

