

\$699,000

mikegreerhomes

Ashburton

Lot 85 Kilphin Street, Strowan Fields



for sale

dwelling size	section size
172 m ²	500 m ²

homes
for
sale

Offering three double bedrooms and an open plan living, kitchen and dining area, this home is perfectly designed to maximise space and indoor/outdoor flow. The home features an internal access double garage and a large patio perfect for entertaining. Complementing the living and bedroom spaces are the family bathroom and ensuite that are both well-appointed with quality fixtures and fittings.

Whether you're starting out or slowing down, growing your portfolio or expanding your family, Strowan Fields is the ideal place to take the next step on your property journey. With manageable sections, a picture-perfect setting and a strong sense of community, it's the ideal spot to invest in your future. At its core, the Strowan Fields vision is a simple one – to create a community of quality homes with beautiful streetscapes, plenty of green spaces, and lots of breath-taking views!

more features.

- ✚ Ensuite
- ✚ Fully Landscaped
- ✚ Godfrey Hirst Flooring
- ✚ Stone Benchtop
- ✚ Tiled Shower
- ✚ Walk-in Wardrobe







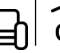
A Turn Key home is an all-inclusive package that only requires 10% deposit.

bringing you **more**

03 688 3675

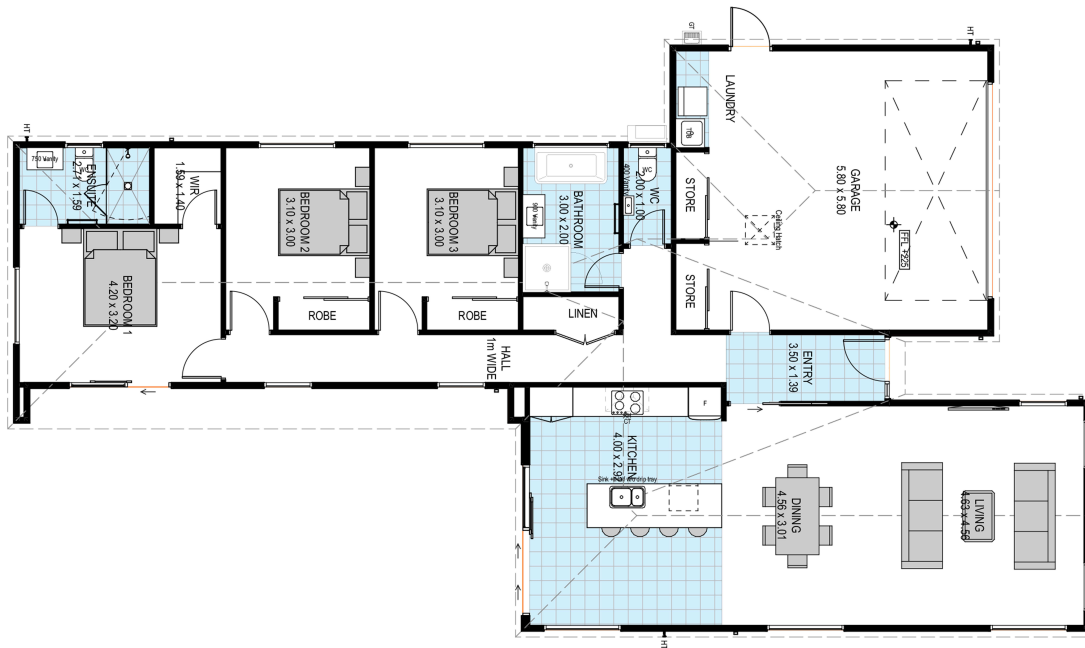
mikegreerhomes.co.nz

Strowan Fields Lot 85 Kilphin Street, Strowan Fields

dwelling size	section size	3	2	2	1	2
172 m ²	500 m ²					



M0432



After Sales Care

At Mike Greer Homes we are committed to making the build journey as stress-free as possible. Our After Sales Care programme addresses any maintenance issues and ensures that any remedial work is undertaken once it is logged and approved.

Disclaimer. While every reasonable effort has been made by Mike Greer Homes to ensure the information correctly illustrates the dwelling and section, this material may only be used by the Purchaser for illustrative and guidance purposes. Mike Greer Homes accepts no responsibility for any differences, errors or omissions which may become apparent during or on completion of the dwelling.

