

\$769,000

mikegreerhomes

Kaiapoi

Lot 275 Beach Grove - 46 Isa-Lei Road



for sale

dwelling size | section size
162 m² | 416 m²

homes
for
sale

Set on a fully landscaped section, this home features three double bedrooms, a family bathroom, an ensuite and an open plan design. The living, kitchen and dining space offers a versatile area well suited to families and for entertaining. The home has been finished to a high standard with quality fixtures and fittings throughout. It offers an internal access double garage and has all driveways and fencing included in the sale price.

Beach Grove is only 900 metres from the heart of Kaiapoi, and is also in close proximity to a range of outdoor pursuits such as fishing, cycling, white baiting, swimming, kayaking, rowing, walking and golfing. Sections and homes in Beach Grove represent exceptional value in such a convenient location with Christchurch city only a short commute away.

more features.

- ✦ Ensuite
- ✦ Fully Landscaped
- ✦ Samsung Appliances
- ✦ Stone Benchtop
- ✦ Walk-in Pantry
- ✦ Walk-in Wardrobe

Turn Key




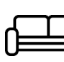

A Turn Key home is an all-inclusive package that only requires 10% deposit.

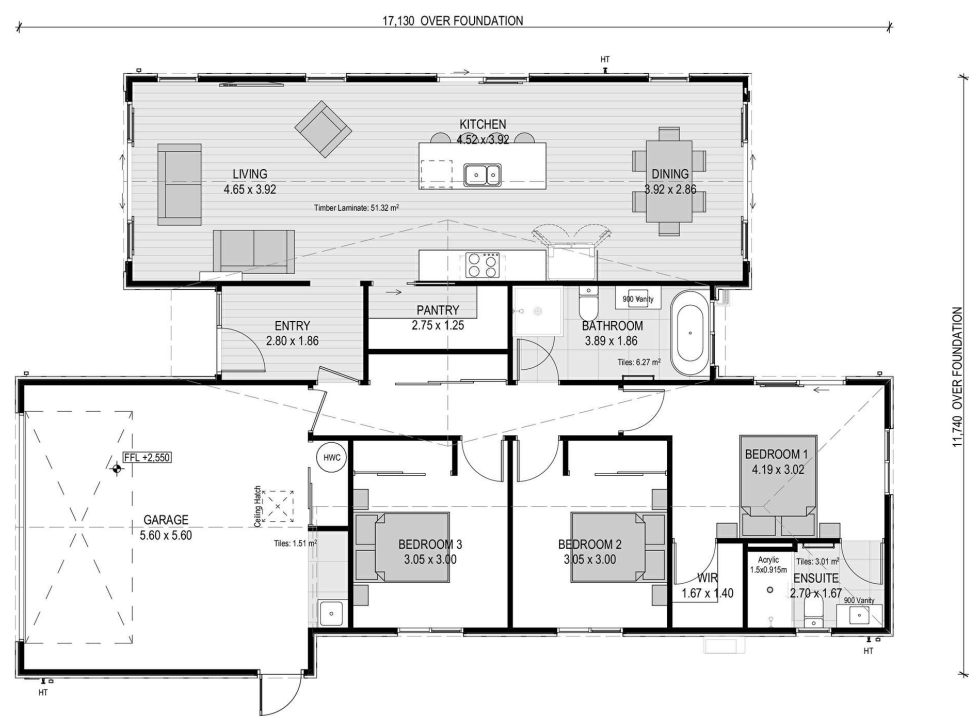
bringing you **more**

03 354 0166

mikegreerhomes.co.nz

Beach Grove Lot 275 Beach Grove - 46 Isa-Lei Road

dwelling size	section size	3	2	2	1	2
162 m ²	416 m ²					



After Sales Care

At Mike Greer Homes we are committed to making the build journey as stress-free as possible. Our After Sales Care programme addresses any maintenance issues and ensures that any remedial work is undertaken once it is logged and approved.

Disclaimer. While every reasonable effort has been made by Mike Greer Homes to ensure the information correctly illustrates the dwelling and section, this material may only be used by the Purchaser for illustrative and guidance purposes. Mike Greer Homes accepts no responsibility for any differences, errors or omissions which may become apparent during or on completion of the dwelling.

