

\$739,000

mikegreerhomes

Allenton

Lot 8, 4D Nicolson Street, Ashburton



Artist Impression Only

for sale

dwelling size | section size
168 m² | 523 m²

homes
for
sale

This home has a thoughtful floor plan that combines three double bedrooms, two bathrooms, a spacious open plan living area, separate laundry and a double garage. The well-appointed kitchen flows nicely with the North-facing living area to create an overall space that opens to the outdoor entertaining space. Finished with quality fixtures and fittings throughout and a landscaped section, this home offers great value and an easy lifestyle.

With tree lined streets and proximity to local amenities, Allenton is an ever popular but seldom available suburb of Ashburton. With local shops, eateries, schools, and the hospital only minutes away, yet still in walking distance to the town centre, this boutique subdivision will appeal to all who choose to make Allenton their home.

more features.

- +
- +
- +
- +
- +
- +
- +
- +
- +
- +



A Turn Key home is an all-inclusive package that only requires 10% deposit.

bringing you more

03 308 7619

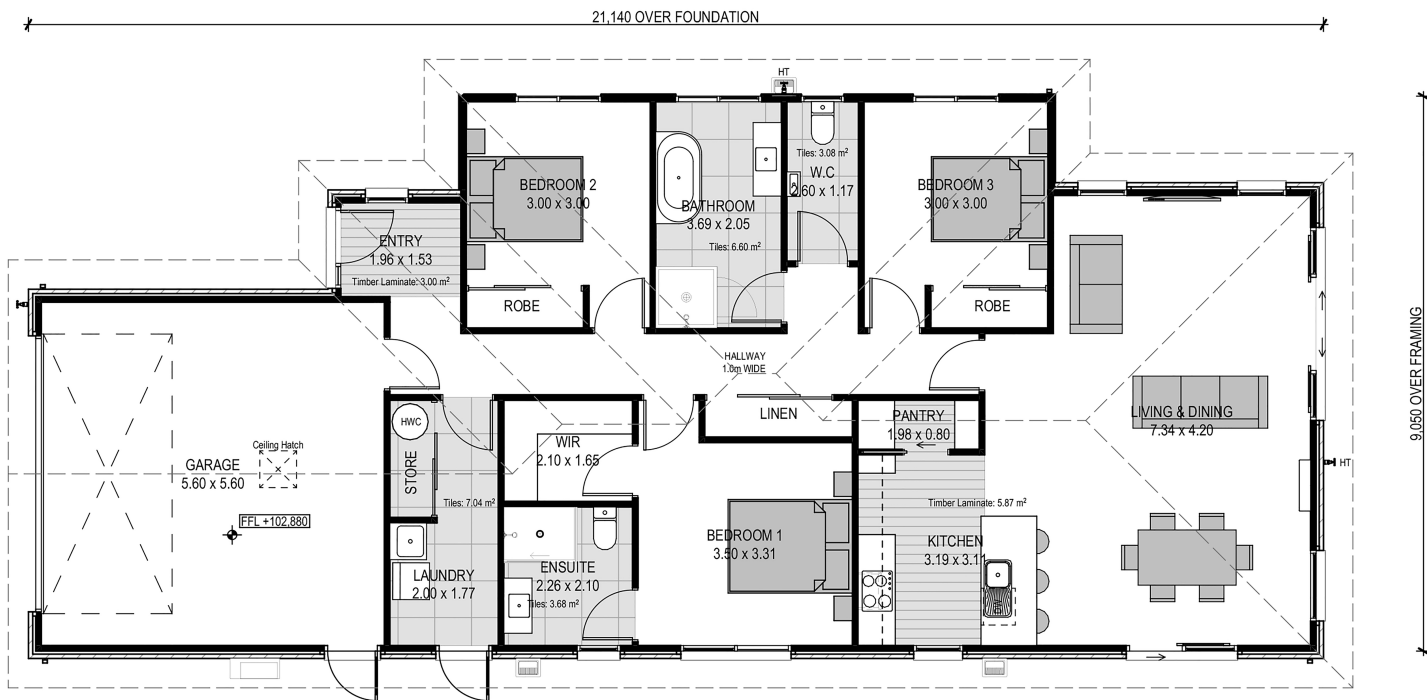
mikegreerhomes.co.nz

Allenton-Ashburton Lot 8, 4D Nicolson Street, Ashburton

dwelling size | section size

168 m² | 523 m²

3 2 2 1 2



After Sales Care

At Mike Greer Homes we are committed to making the build journey as stress-free as possible. Our After Sales Care programme addresses any maintenance issues and ensures that any remedial work is undertaken once it is logged and approved.

Disclaimer. While every reasonable effort has been made by Mike Greer Homes to ensure the information correctly illustrates the dwelling and section, this material may only be used by the Purchaser for illustrative and guidance purposes. Mike Greer Homes accepts no responsibility for any differences, errors or omissions which may become apparent during or on completion of the dwelling.

