

# \$879,000

# mikegreerhomes

## Prebbleton

Lot 24 Trices Road, Prebbleton



Artist Impression Only

# for sale

dwelling size | section size  
170 m<sup>2</sup> | 400 m<sup>2</sup>

homes  
for  
sale

This four double bedroom, double garage, fully landscaped home has been designed to maximise space and sun. The North-facing open plan living, dining and kitchen area forms the centre of the home and offers great indoor/outdoor flow. The well-appointed family bathroom and ensuite both feature quality fixtures and fittings that complement the spacious bedroom and living areas.

This new subdivision is positioned on the corner of Trices and Birchs Road in an increasingly sought-after area. Enjoy the vibrant village atmosphere of Prebbleton, with an array of dining options and amenities at Prebbleton Village and Fresh Choice Supermarket, all within a five-minute drive. Kakaha Park is 1km away, featuring cycle tracks, a playground, sports field and a dog park. Christchurch City is an easy commute via the Southern Motorway.

### more features.

- +
- +
- +
- +
- +
- +



Turn Key

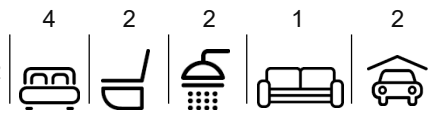
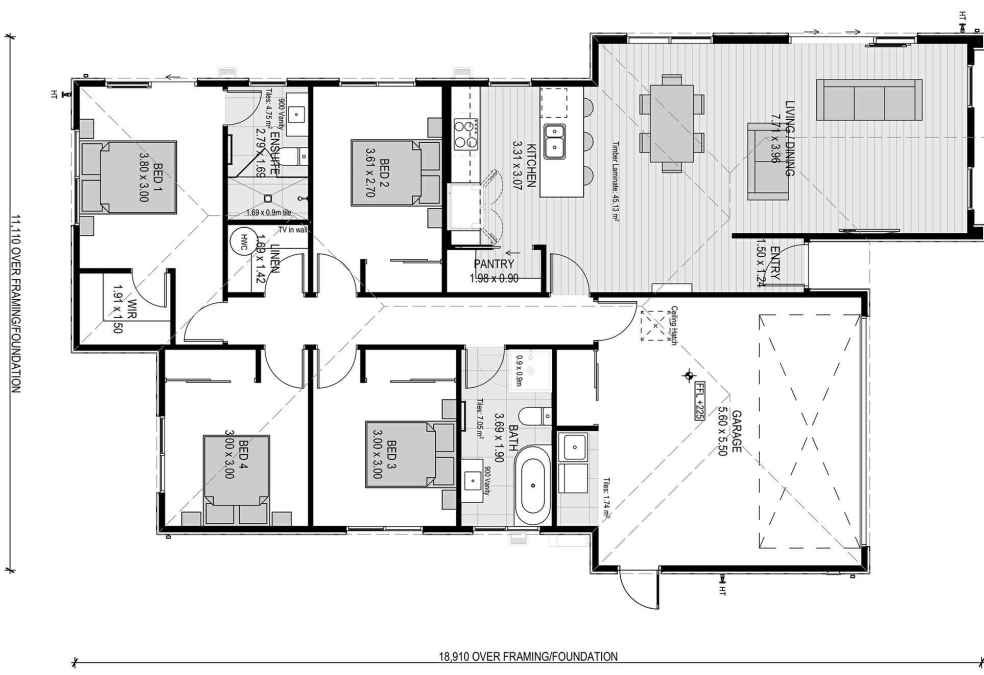
A Turn Key home is an all-inclusive package that only requires 10% deposit.

Trices Road Lot 24 Trices Road, Prebbleton

dwelling size | section size

170 m<sup>2</sup> | 400 m<sup>2</sup>

4 2 2 1 2

**After Sales Care**

At Mike Greer Homes we are committed to making the build journey as stress-free as possible. Our After Sales Care programme addresses any maintenance issues and ensures that any remedial work is undertaken once it is logged and approved.

Disclaimer. While every reasonable effort has been made by Mike Greer Homes to ensure the information correctly illustrates the dwelling and section, this material may only be used by the Purchaser for illustrative and guidance purposes. Mike Greer Homes accepts no responsibility for any differences, errors or omissions which may become apparent during or on completion of the dwelling.

