

# \$785,000

# mikegreerhomes

## Kaiapoi

Lot 339 Beach Grove - 7 Cordelia Street



Artist Impression Only

# for sale

dwelling size | section size  
161 m<sup>2</sup> | 338 m<sup>2</sup>

homes  
for  
sale

Offering three double bedrooms and an open plan living, kitchen and dining area, this home is perfectly designed to maximise space and indoor/outdoor flow. The home features an internal access double garage and a fully landscaped private section perfect for entertaining. Complementing the living and bedroom spaces are the family bathroom and ensuite that are both well-appointed with quality fixtures and fittings.

Beach Grove is only 900 metres from the heart of Kaiapoi, and is also in close proximity to a range of outdoor pursuits such as fishing, cycling, white baiting, swimming, kayaking, rowing, walking and golfing. Sections and homes in Beach Grove represent exceptional value in such a convenient location with Christchurch city only a short commute away.

### more features.

- + Two Car Garaging
- + Ensuite
- + Fully Landscaped
- + Godfrey Hirst Flooring
- + Samsung Appliances
- + Walk-in Pantry
- + Walk-in Wardrobe



**Turn Key**






A Turn Key home is an all-inclusive package that only requires 10% deposit.

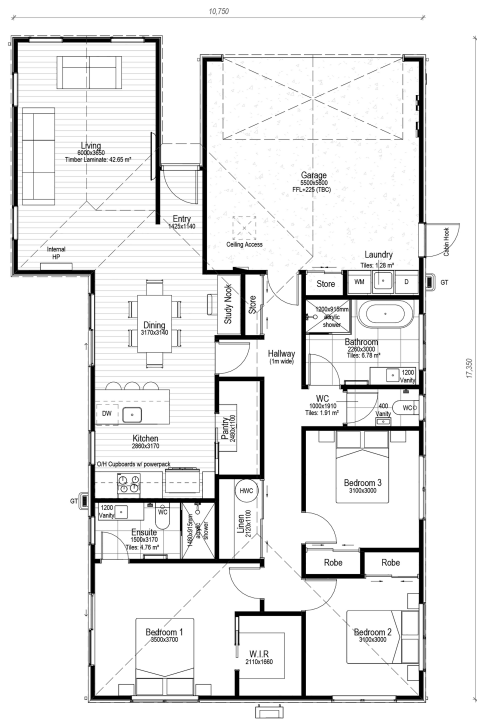
bringing you more

03 354 0166

mikegreerhomes.co.nz

# Beach Grove Lot 339 Beach Grove - 7 Cordelia Street

dwelling size	section size	3	2	2	1	2
161 m <sup>2</sup>	338 m <sup>2</sup>					



## After Sales Care

At Mike Greer Homes we are committed to making the build journey as stress-free as possible. Our After Sales Care programme addresses any maintenance issues and ensures that any remedial work is undertaken once it is logged and approved.

Disclaimer. While every reasonable effort has been made by Mike Greer Homes to ensure the information correctly illustrates the dwelling and section, this material may only be used by the Purchaser for illustrative and guidance purposes. Mike Greer Homes accepts no responsibility for any differences, errors or omissions which may become apparent during or on completion of the dwelling.

