

# \$850,000

# mikegreerhomes

## Christchurch Central

Townhouse 19, 100 Peterborough Street



# for sale

dwelling size  
80 m<sup>2</sup>

homes  
for  
sale

This three storey home comes with a carpark and features an open plan kitchen, dining and living area and laundry on the ground floor, a bedroom and bathroom on the middle floor and a generous bedroom with an ensuite on the top floor.

Peterborough Street will appeal to downsizers and investors alike. Located in the cultural heart of the city adjacent to the Christchurch Town Hall, these homes are an easy stroll to the best eateries and bars the city has to offer. Walk via the river or through one of the many parks. Housed in idyllic surroundings, these properties are for those who want a little more.

### more features.

- ✚ Ensuite
- ✚ Fully Landscaped
- ✚ Complies with the Healthy Homes Standard
- ✚ 10 Year Registered Master Build Guarantee
- ✚ Off-Street Carpark
- ✚ Smeg Appliances
- ✚ Window Coverings Included



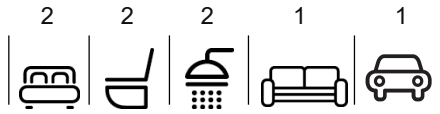
A Turn Key home is an all-inclusive package that only requires 10% deposit.

bringing you **more**

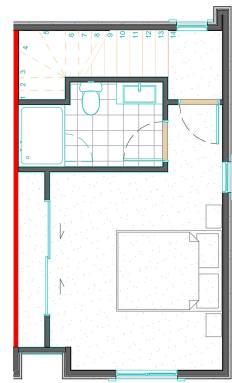
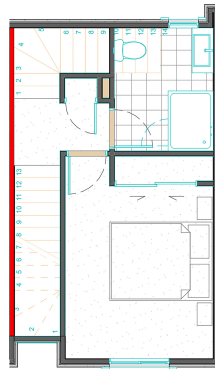
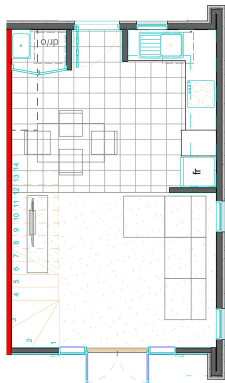
[mikegreerhomes.co.nz](https://mikegreerhomes.co.nz)

## Peterborough Street Townhouse 19, 100 Peterborough Street

dwelling size  
80 m<sup>2</sup>



VC1317a



### After Sales Care

At Mike Greer Homes we are committed to making the build journey as stress-free as possible. Our After Sales Care programme addresses any maintenance issues and ensures that any remedial work is undertaken once it is logged and approved.



Disclaimer. While every reasonable effort has been made by Mike Greer Homes to ensure the information correctly illustrates the dwelling and section, this material may only be used by the Purchaser for illustrative and guidance purposes. Mike Greer Homes accepts no responsibility for any differences, errors or omissions which may become apparent during or on completion of the dwelling.