

\$719,000

Rolleston

Lot 178 Falcon's Landing Raptor - 123 Ed Hillary Drive



Artist Impression Only

for sale

dwelling size | section size
157 m² | 426 m²

homes
for
sale

This attractive three double bedroom, two bathroom home has a spacious and practical floor plan that would suit a range of people and lifestyles. A North facing open plan living/dining/kitchen area offers easy access to the outdoor entertaining area. The home also offers an internal access double garage and quality fixtures and fittings throughout, plus it benefits from a good location close to all amenities. Included in the sale price are the driveway, patios, and fencing. Turnkey and soft landscaping packages are also available.

Falcon's Landing is a fast-growing subdivision situated in the popular Rolleston area of Christchurch. With around 600 residentially zoned sections ranging from 450-1000sqm, Falcon's Landing offers prime sites and outlooks to suit a range of lifestyles. One of the key advantages of Falcon's Landing is its convenient proximity to schools, parks, and local amenities. Residents can enjoy easy access to educational institutions, green spaces, and essential amenities, enhancing the overall convenience and quality of life in this highly desirable location.

Home and Land Package

A Home and Land Package is a section and home combination with finance options available.

more features.

- ✦ Two Car Garaging
- ✦ Designer Kitchen
- ✦ Driveway and Patios Included
- ✦ Landscaping Package Available
- ✦ Study Nook
- ✦ Tiled Floors to Wet Areas
- ✦ Walk-in Wardrobe


Special T&C's apply to this package.

Falcon's Landing Lot 178 Falcon's Landing Raptor - 123 Ed Hillary Drive

dwelling size | section size

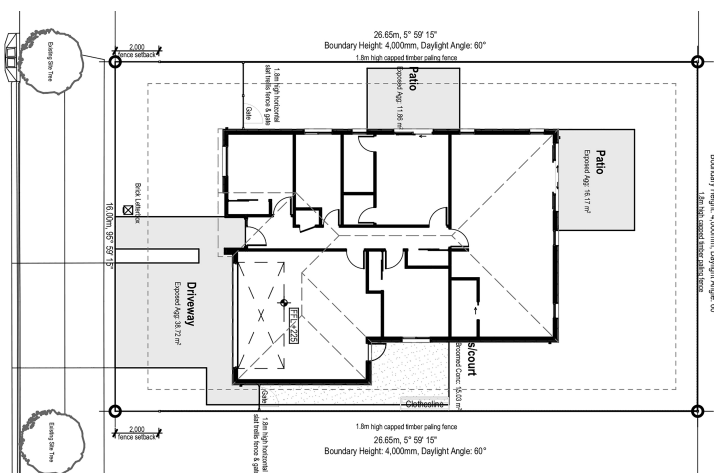
157 m² | 426 m²

3 2 2 1 2




After Sales Care

At Mike Greer Homes we are committed to making the build journey as stress-free as possible. Our After Sales Care programme addresses any maintenance issues and ensures that any remedial work is undertaken once it is logged and approved.



Disclaimer. While every reasonable effort has been made by Mike Greer Homes to ensure the information correctly illustrates the dwelling and section, this material may only be used by the Purchaser for illustrative and guidance purposes. Mike Greer Homes accepts no responsibility for any differences, errors or omissions which may become apparent during or on completion of the dwelling.