

\$839,000

mikegreerhomes

Belfast

Lot 15 Spring Grove - 30 Bill Hammond Dr



for sale

dwelling size | section size
166 m² | 424 m²

homes
for
sale

Set on a fully landscaped section, this home has been thoughtfully designed to maximise space and comfortable living. With four double bedrooms, a family bathroom and an ensuite, the home is well appointed and suited to a range of lifestyles. The open plan living, kitchen and dining area creates a spacious central hub that integrates nicely with the outdoor entertaining area and the garden. Located in a popular area within close proximity to schools, shops and other amenities, this home presents great value for those looking for a new family home.

Spring Grove is a fast-growing subdivision just ten minutes North of Central Christchurch. You have the convenience of being in close proximity to a number of local shops and amenities, and the luxury of semi-rural amenities such as golf courses and recreational reserves. Spring Grove offers you the ideal location with a range of homes at an affordable price.

more features.

- ✦ Two Car Garaging
- ✦ Ensuite
- ✦ Fully Landscaped
- ✦ Samsung Appliances
- ✦ Tiled Floors to Wet Areas



Turn Key

A Turn Key home is an all-inclusive package that only requires 10% deposit.

bringing you **more**

03 354 0166


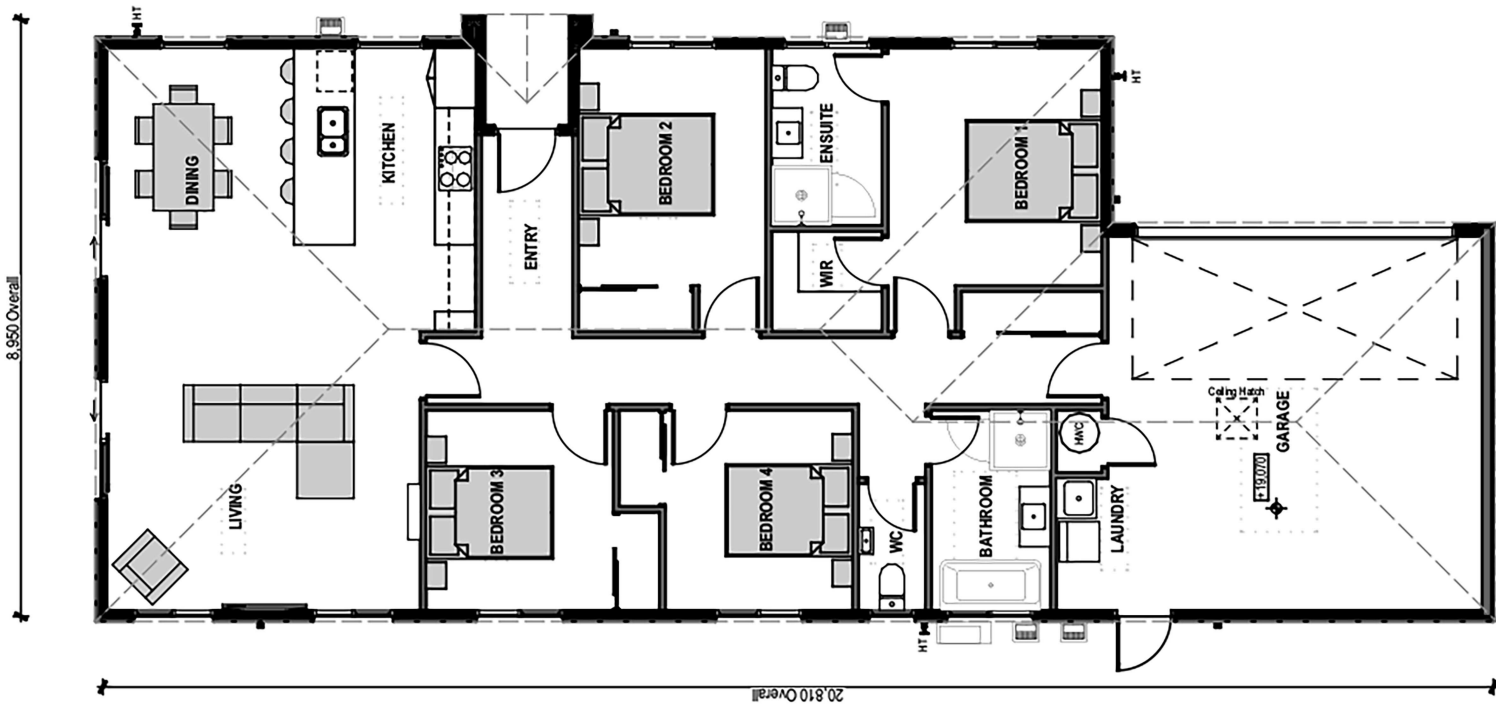
mikegreerhomes.co.nz

Spring Grove Lot 15 Spring Grove - 30 Bill Hammond Dr

dwelling size | section size

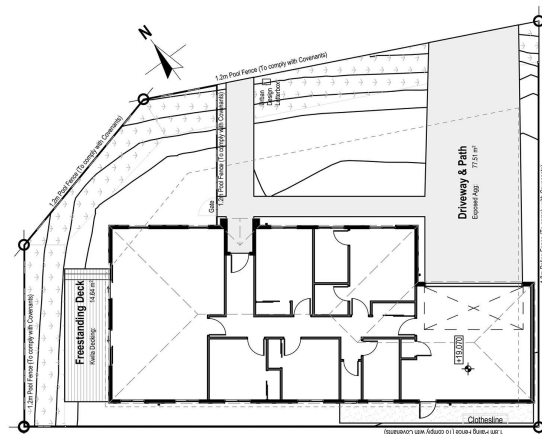
166 m² | 424 m²

4 2 2 1 2

After Sales Care

At Mike Greer Homes we are committed to making the build journey as stress-free as possible. Our After Sales Care programme addresses any maintenance issues and ensures that any remedial work is undertaken once it is logged and approved.



Disclaimer. While every reasonable effort has been made by Mike Greer Homes to ensure the information correctly illustrates the dwelling and section, this material may only be used by the Purchaser for illustrative and guidance purposes. Mike Greer Homes accepts no responsibility for any differences, errors or omissions which may become apparent during or on completion of the dwelling.