

# \$775,000

# mikegreerhomes

## Belfast

PU129 Spring Grove LSV - 44 Atawhai Ln



# for sale

dwelling size | section size  
156 m<sup>2</sup> | Common Ground

homes for sale

Offering three double bedrooms, an open plan living, kitchen and dining area and an internal access double garage. This home is perfectly designed to maximise space, comfortable living and indoor/outdoor flow. The well-appointed main bathroom and ensuite feature quality fixtures and fittings.

Spring Grove Lifestyle Village brings together like-minded active over 55 year retirees or semi-retirees, each in their own freehold property. An open village setting with a central gathering place will create a wealth of opportunities for residents to forge new connections, yet provide the freedom and space they want to live the life they choose. Plus, with properties owned freehold, the potential for growth is far greater than a traditional retirement village. SGLV offers a range of new home options in a secure and welcoming community.

### more features.

- + Two Car Garaging
- + Ensuite
- + Godfrey Hirst Flooring
- + Open Plan Living
- + Smeg Appliances
- + Walk-in Wardrobe



Turn Key

A Turn Key home is an all-inclusive package that only requires 10% deposit.

bringing you **more**

03 354 0166

[mikegreerhomes.co.nz](http://mikegreerhomes.co.nz)

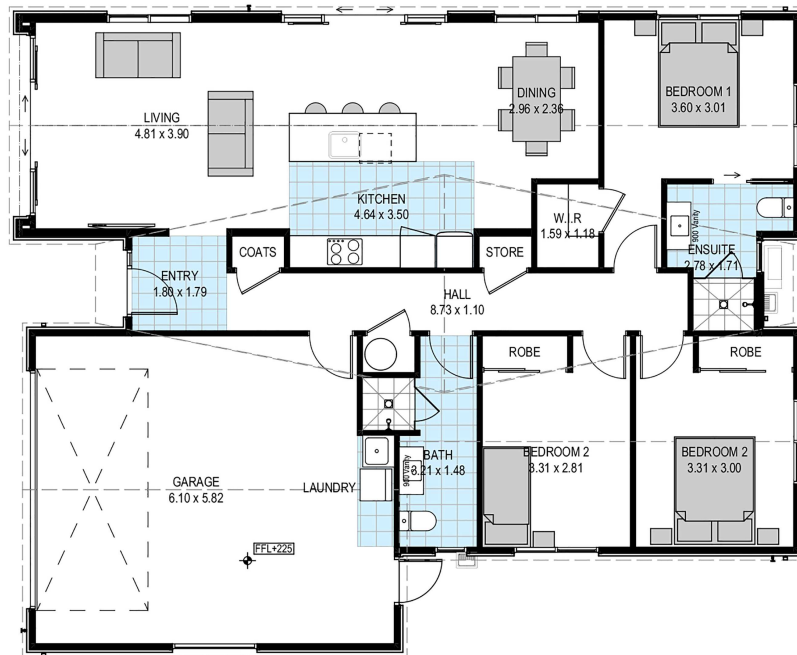
# Spring Grove Lifestyle Village (Over 55's) PU129 Spring Grove LSV - 44 Atawhai I

MK-CT7042



dwelling size  
156 m<sup>2</sup>

Common Ground



## After Sales Care

At Mike Greer Homes we are committed to making the build journey as stress-free as possible. Our After Sales Care programme addresses any maintenance issues and ensures that any remedial work is undertaken once it is logged and approved.

Disclaimer. While every reasonable effort has been made by Mike Greer Homes to ensure the information correctly illustrates the dwelling and section, this material may only be used by the Purchaser for illustrative and guidance purposes. Mike Greer Homes accepts no responsibility for any differences, errors or omissions which may become apparent during or on completion of the dwelling.

