

\$950,000

 **mikegreerhomes**

Atawhai

Lot 29 Saddleback Road, Atawhai



for sale

dwelling size | section size
145 m² | 573 m²

**homes
for
sale**

This stylish home combines a practical floor plan with attention to detail to maximise functionality and lifestyle. With three double bedrooms and open plan living area, this home is perfectly appointed for growing families wanting the warmth and style of a new home. Showcasing the best in modern fixtures and fittings throughout with an internal access double garage and the kitchen and bathrooms are all designed to combine functionality with flair and comfort.

more features.

- + Godfrey Hirst Flooring
- + Driveway and Patios Included
- + LED Lighting
- + 10 Year Registered Master Build Guarantee
- + Open Plan Living
- + Designer Tapware



Home and Land Package

A Home and Land Package is a section and home combination with finance options available.

Special T&C's apply to this package.






bringing you **more**

03 544 7873

mikegreerhomes.co.nz

Atawhai Lot 29 Saddleback Road, Atawhai

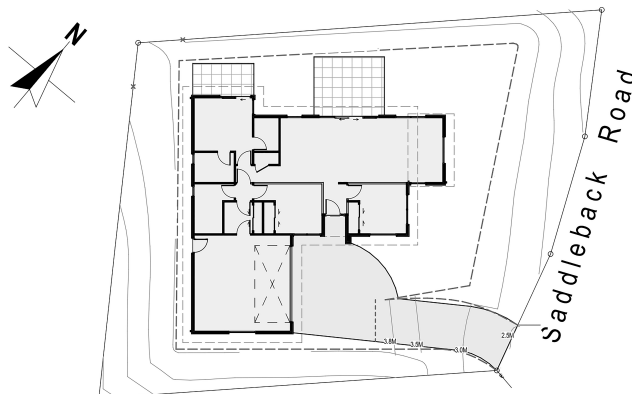
NL0448


dwelling size	section size	3	2	2	1	2
145 m ²	573 m ²					



After Sales Care

At Mike Greer Homes we are committed to making the build journey as stress-free as possible. Our After Sales Care programme addresses any maintenance issues and ensures that any remedial work is undertaken once it is logged and approved.



Disclaimer. While every reasonable effort has been made by Mike Greer Homes to ensure the information correctly illustrates the dwelling and section, this material may only be used by the Purchaser for illustrative and guidance purposes. Mike Greer Homes accepts no responsibility for any differences, errors or omissions which may become apparent during or on completion of the dwelling.