

# \$789,000

# mikegreerhomes

## Mt Roskill

Lot 29, 27 Herenga Way, Auckland



Artist Impression Only

# for sale

dwelling size | section size  
70 m<sup>2</sup> | 118 m<sup>2</sup>

homes  
for  
sale

This two storey home has an off-street carpark, two double bedrooms, a bathroom, separate toilet, separate laundry and a spacious open plan kitchen, dining and living area that opens out on to an entertaining area. Finished with quality fixtures and fittings and a landscaped section, this home offers great value and an easy lifestyle.

Make Mt Roskill your new community and experience a sense of place that offers everything you would need to thrive. Located close to the central city, with public transport options available, new and improved public facilities, recreational spaces, schooling, shops, restaurants and amazing beaches, you are spoiled for choice.

### more features.

- ✦ Close to Local Amenities
- ✦ After Sales Care Program
- ✦ Digital Key Entry
- ✦ Ensuite
- ✦ 10 Year Registered Master Build Guarantee
- ✦ Open Plan Living
- ✦ Off-Street Carpark
- ✦ Separate Laundry



Turn Key

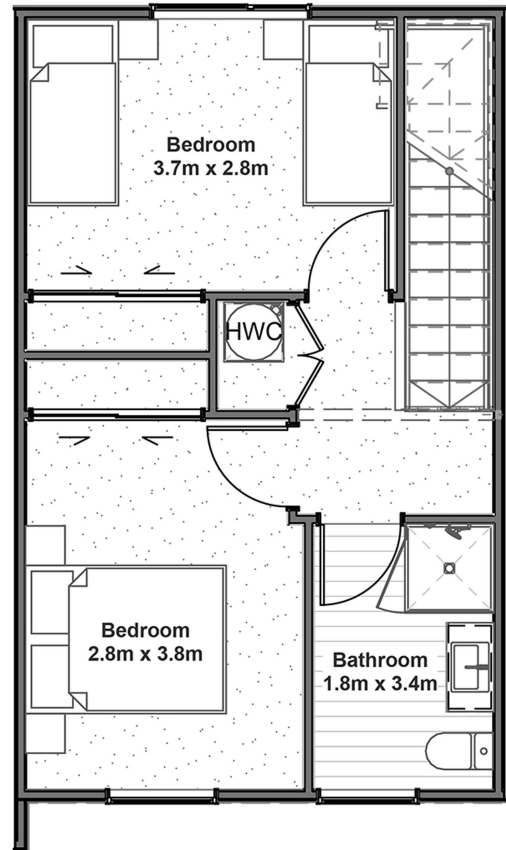
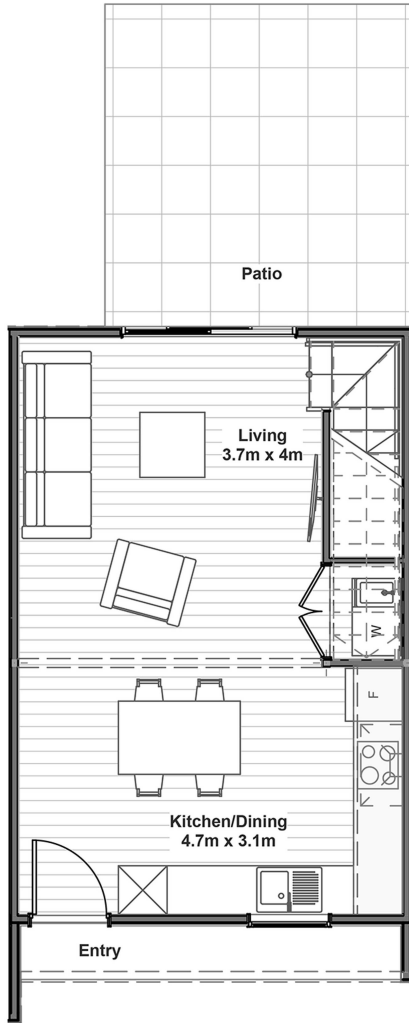
A Turn Key home is an all-inclusive package that only requires 10% deposit.

bringing you more

mikegreerhomes.co.nz

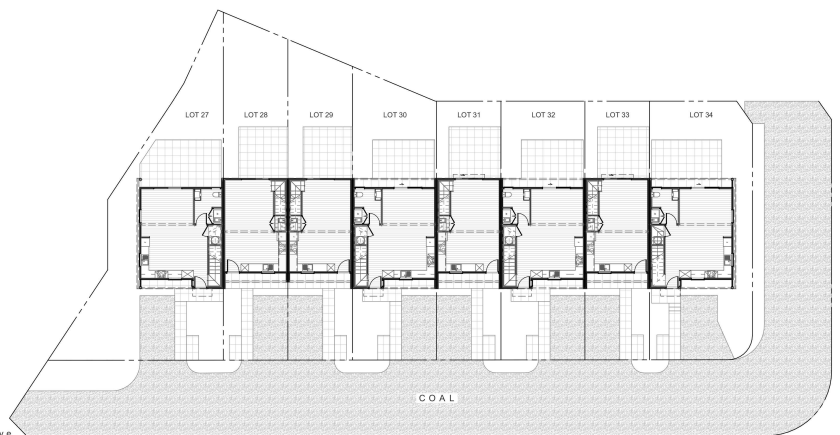
# Roskill Lot 29, 27 Herenga Way, Auckland

dwelling size	section size	2	1	1	1	1
70 m <sup>2</sup>	118 m <sup>2</sup>					



## After Sales Care

At Mike Greer Homes we are committed to making the build journey as stress-free as possible. Our After Sales Care programme addresses any maintenance issues and ensures that any remedial work is undertaken once it is logged and approved.



Disclaimer. While every reasonable effort has been made by Mike Greer Homes to ensure the information correctly illustrates the dwelling and section, this material may only be used by the Purchaser for illustrative and guidance purposes. Mike Greer Homes accepts no responsibility for any differences, errors or omissions which may become apparent during or on completion of the dwelling.