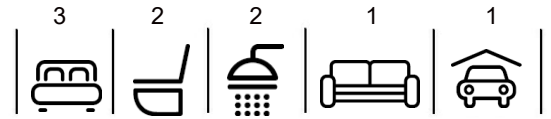


\$775,000

 **mikegreerhomes**

Marshland

Lot 4004b Prestons Park - McKerrow Street



for sale

| dwelling size | section size |
|--------------------|--------------------|
| 129 m ² | 291 m ² |

**homes
for
sale**

Set on a fully landscaped section, this home features three double bedrooms, two bathrooms and an open plan design. The living, kitchen and dining space offers a versatile area well suited to families and for entertaining. A North-facing garden and courtyard off the living provides a quiet retreat.

Prestons Park is a well-established suburb offering a great lifestyle, regardless of your age or stage. Just 20 minutes to the Airport and City Centre, and a short drive to golf courses, beaches, Bottle Lake Forest, The Palms Mall and Northwood Supa Centre. Prestons Park is in the new state-of-the-art Marshlands School zone, catering for students in Years 1 to 8.

more features.

- ✚ Fully Landscaped
- ✚ Samsung Appliances
- ✚ Tiled Shower
- ✚ Walk-in Pantry
- ✚ Walk-in Wardrobe







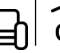
A Turn Key home is an all-inclusive package that only requires 10% deposit.

bringing you **more**

03 354 0166

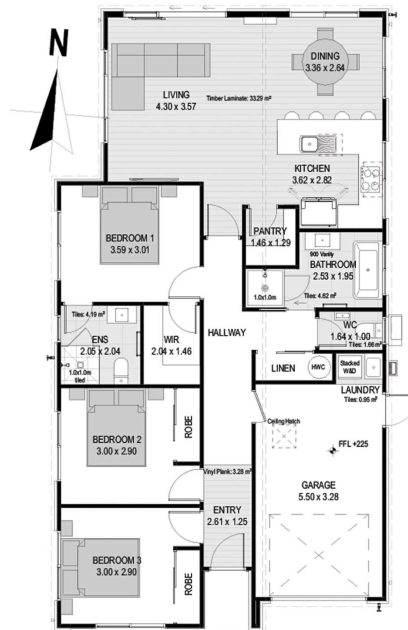
mikegreerhomes.co.nz

Prestons Park Lot 4004b Prestons Park - McKerrow Street

| dwelling size | section size | 3 | 2 | 2 | 1 | 1 |
|--------------------|--------------------|---|---|---|---|---|
| 129 m ² | 291 m ² |  |  |  |  |  |

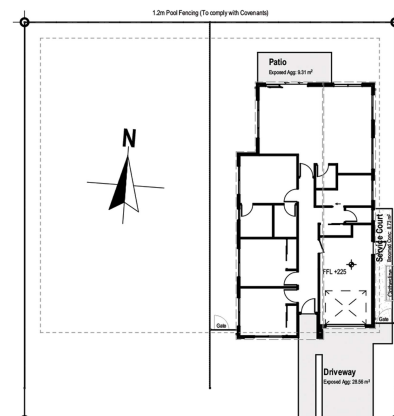


CT7684



After Sales Care

At Mike Greer Homes we are committed to making the build journey as stress-free as possible. Our After Sales Care programme addresses any maintenance issues and ensures that any remedial work is undertaken once it is logged and approved.



Disclaimer. While every reasonable effort has been made by Mike Greer Homes to ensure the information correctly illustrates the dwelling and section, this material may only be used by the Purchaser for illustrative and guidance purposes. Mike Greer Homes accepts no responsibility for any differences, errors or omissions which may become apparent during or on completion of the dwelling.