

\$899,000

mikegreerhomes

Brightwater

7 Ara o Waonui, Wairoa



for sale

dwelling size | section size
149 m² | 543 m²

homes
for
sale

Building has never been easier! With its perfect fusion of rural charm and urban convenience, this turnkey gem offers an idyllic retreat for those seeking both sanctuary and connection. This family home has been designed with modern comfort and timeless design in mind. From the moment you step inside, you'll be greeted by a spacious open plan living / Kitchen / Dining area flooded with natural north-facing light, seamlessly blending with the picturesque surroundings. Three generous sized bedrooms with separate ensuite offer space for the whole family.

The Wairoa subdivision is situated in Brightwater, a quiet village 20kms southwest of Nelson and 10km southwest of Richmond in the Tasman District. Placed on the banks of the beautiful Wairoa River and nestled in amongst vineyards this is a picture perfect spot to live in. It's only a short walk to the village center, where you'll find all the amenities you need. The subdivision is also just a stone's throw from Snowdon's Bush Reserve.

more features.

- ✦ Boundary Fences
- ✦ Fully Landscaped
- ✦ Godfrey Hirst Flooring
- ✦ Driveway and Patios Included
- ✦ 10 Year Registered Master Build Guarantee
- ✦ Samsung Appliances
- ✦ Stone Benchtop
- ✦ Complete Turnkey Package, No Hidden Costs








A Turn Key home is an all-inclusive package that only requires 10% deposit.

bringing you **more**

03 544 7873

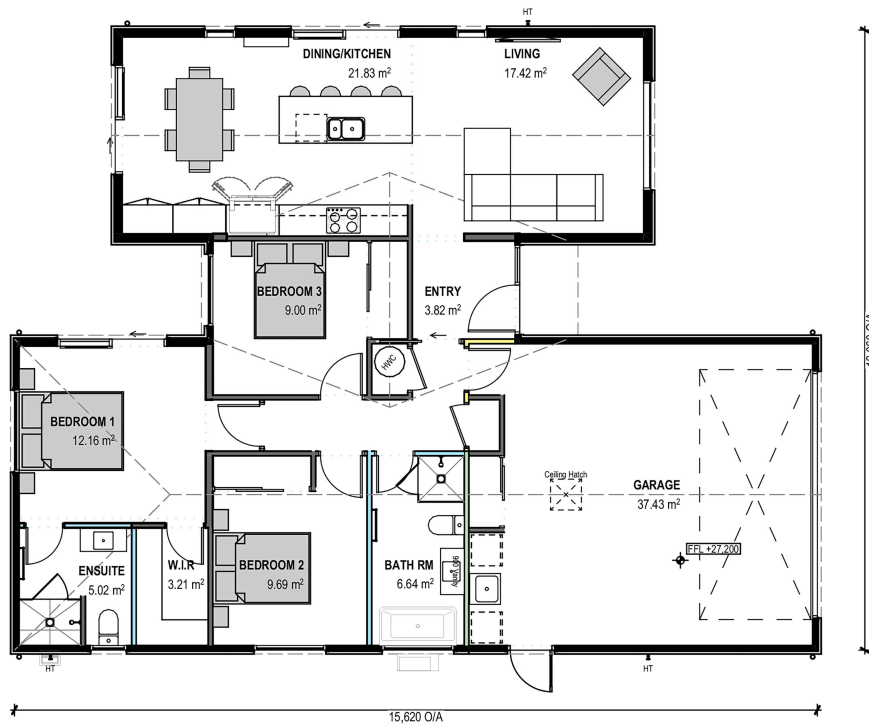
mikegreerhomes.co.nz

Wairoa 7 Ara o Waonui, Wairoa

| | | | | | | |
|--------------------|--------------------|---|---|---|---|---|
| dwelling size | section size | 3 | 2 | 2 | 1 | 2 |
| 149 m ² | 543 m ² |  |  |  |  |  |



NL0595



After Sales Care

At Mike Greer Homes we are committed to making the build journey as stress-free as possible. Our After Sales Care programme addresses any maintenance issues and ensures that any remedial work is undertaken once it is logged and approved.

Disclaimer. While every reasonable effort has been made by Mike Greer Homes to ensure the information correctly illustrates the dwelling and section, this material may only be used by the Purchaser for illustrative and guidance purposes. Mike Greer Homes accepts no responsibility for any differences, errors or omissions which may become apparent during or on completion of the dwelling.

