

\$929,750

mikegreerhomes

Omokoroa

Lot 194, Korora Crescent, Harbour Ridge



for sale

dwelling size	section size
134 m ²	430 m ²

homes
for
sale

This 3 double bedroom, double garage, fully landscaped home has been designed to maximise space and sun. The North facing open plan living, dining and kitchen area forms the centre of the home and offers great indoor/outdoor flow. The well-appointed family bathroom and ensuite both feature quality fixtures and fittings that complement the spacious bedroom and living areas.

Design subject to Developers Approval.

This growing little town with a great community spirit offers a beachy lifestyle with great schools, pre-schools and plenty of activities for those into sport, walking and boating activities. With a Fresh Choice supermarket, cafes and good medical facilities close by, there is little need to travel to town.

more features.

- + Two Car Garaging
- + After Sales Care Program
- + Fully Landscaped
- + LED Lighting
- + 10 Year Registered Master Build Guarantee
- + Samsung Appliances



A Turn Key home is an all-inclusive package that only requires 10% deposit.

bringing you **more**

07 281 1560

mikegreerhomes.co.nz

Harbour Ridge Lot 194, Korora Crescent, Harbour Ridge

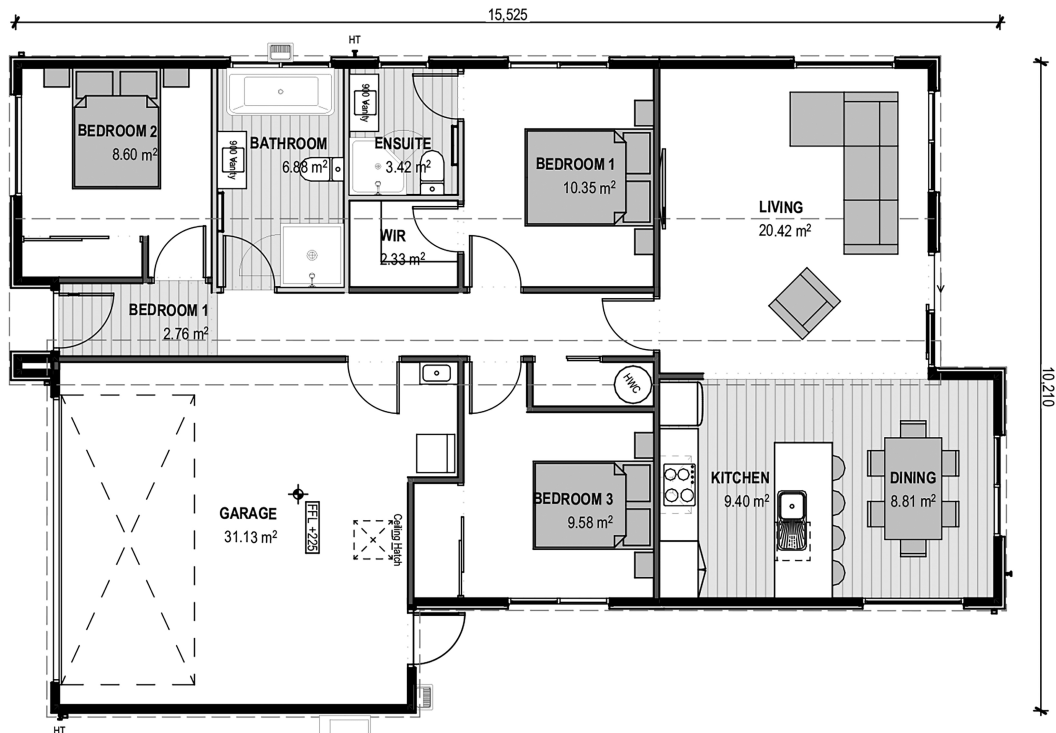
dwelling size 134 m² section size 430 m²

3 2 2 1 2

Icons: 3 bedrooms, 2 bathrooms, 2 living areas, 1 kitchen, 2 garages



TA0438



After Sales Care

At Mike Greer Homes we are committed to making the build journey as stress-free as possible. Our After Sales Care programme addresses any maintenance issues and ensures that any remedial work is undertaken once it is logged and approved.

Disclaimer. While every reasonable effort has been made by Mike Greer Homes to ensure the information correctly illustrates the dwelling and section, this material may only be used by the Purchaser for illustrative and guidance purposes. Mike Greer Homes accepts no responsibility for any differences, errors or omissions which may become apparent during or on completion of the dwelling.

