

\$921,000

mikegreerhomes

Richmond

17 Hukere Crescent, Hart Rise



for sale

dwelling size | section size
155 m² | 499 m²

homes
for
sale

This stylish home combines a practical floor plan with attention to detail to maximise functionality and lifestyle. The three double bedrooms are complemented by a family bathroom and spacious tiled ensuite, as well as a generous open plan kitchen, dining and living area. This well-appointed North facing living area opens out onto an outdoor entertaining area and an internal access double garage completes the package.

more features.

- ✦ After Sales Care Program
- ✦ Personal Colour Consultation
- ✦ Driveway and Patios Included
- ✦ Landscaping Package Available
- ✦ 10 Year Registered Master Build Guarantee
- ✦ Open Plan Living
- ✦ Samsung Appliances



Turn Key






A Turn Key home is an all-inclusive package that only requires 10% deposit.

bringing you **more**

03 544 7873

mikegreerhomes.co.nz

Richmond 17 Hukere Crescent, Hart Rise

dwelling size	section size	3	2	2	1	2
155 m ²	499 m ²					

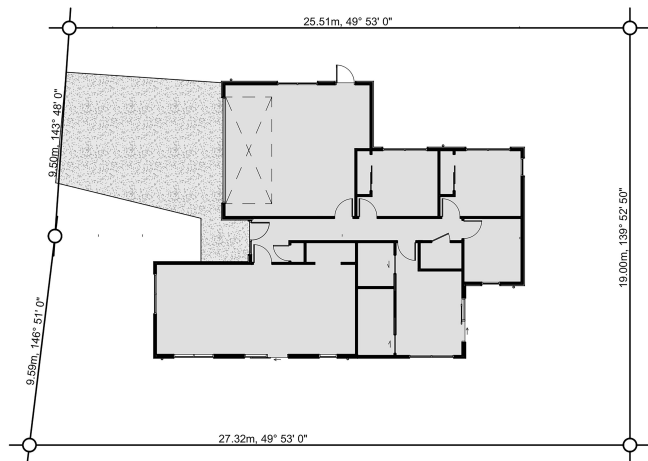


NL0593



After Sales Care

At Mike Greer Homes we are committed to making the build journey as stress-free as possible. Our After Sales Care programme addresses any maintenance issues and ensures that any remedial work is undertaken once it is logged and approved.



Disclaimer. While every reasonable effort has been made by Mike Greer Homes to ensure the information correctly illustrates the dwelling and section, this material may only be used by the Purchaser for illustrative and guidance purposes. Mike Greer Homes accepts no responsibility for any differences, errors or omissions which may become apparent during or on completion of the dwelling.