

# \$949,000

# mikegreerhomes

## Timaru

Lot 5 Mahoneys Hill Road



Artist Impression Only

# for sale

dwelling size | section size  
193 m<sup>2</sup> | 591 m<sup>2</sup>

homes  
for  
sale

This spacious home has a thoughtful floor plan that combines four double bedrooms, two bathrooms and a superb open plan living area. The well-appointed kitchen flows nicely with the North-facing dining and living areas to create an overall space that opens out onto the outdoor entertaining area. Finished with quality fixtures and fittings throughout, this home offers great value and an easy lifestyle.

Situated in a rural setting, but minutes away from the CBD, this subdivision is a perfect fit for first home buyers, families and investors. With schools, the airport and shops nearby, it is conveniently located to all your day-to-day needs. Plus you're only 40 minutes away from the lakes, fishing, hunting and skiing.

### more features.

- +
- +
- +
- +
- +
- +

### Home and Land Package

A Home and Land Package is a section and home combination with finance options available.






Special T&C's apply to this package.

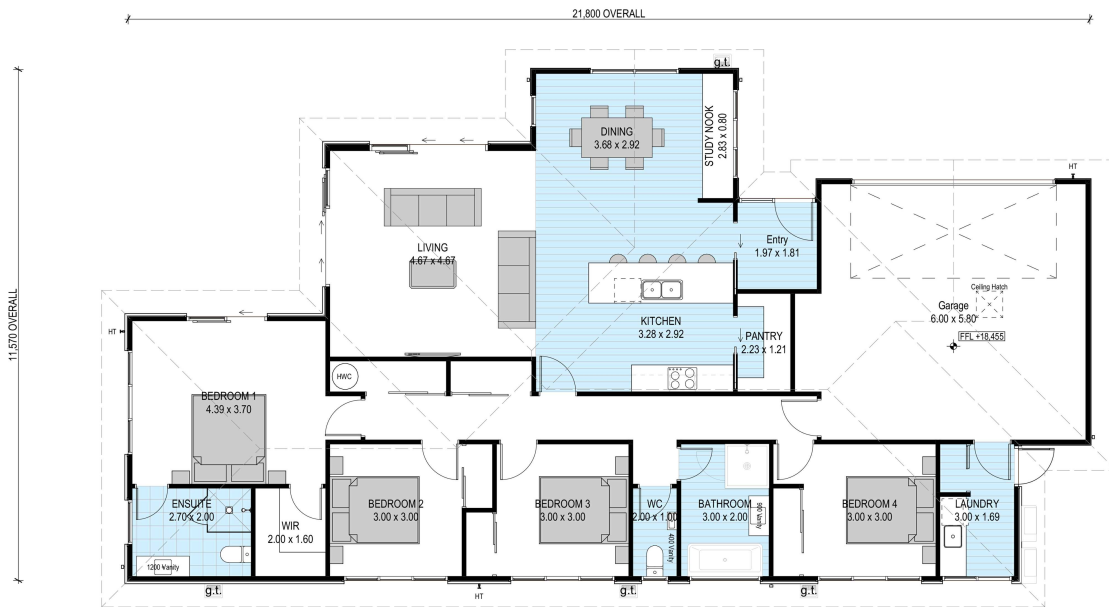
bringing you **more**

03 688 3675

[mikegreerhomes.co.nz](http://mikegreerhomes.co.nz)

# Mahoneys Hill Road Lot 5 Mahoneys Hill Road

dwelling size	section size	4	2	2	1	2
193 m <sup>2</sup>	591 m <sup>2</sup>					



## After Sales Care

At Mike Greer Homes we are committed to making the build journey as stress-free as possible. Our After Sales Care programme addresses any maintenance issues and ensures that any remedial work is undertaken once it is logged and approved.

Disclaimer. While every reasonable effort has been made by Mike Greer Homes to ensure the information correctly illustrates the dwelling and section, this material may only be used by the Purchaser for illustrative and guidance purposes. Mike Greer Homes accepts no responsibility for any differences, errors or omissions which may become apparent during or on completion of the dwelling.

