

# \$862,000

 **mikegreerhomes**

## Richmond - Tasman District

15 Hukere Crescent Richmond - Tasman District



# for sale

dwelling size	section size
149 m <sup>2</sup>	458 m <sup>2</sup>

**homes  
for  
sale**

This stylish home combines a practical floor plan with attention to detail to maximise functionality and lifestyle. The three double bedrooms are complemented by a family bathroom and ensuite, as well as a spacious open plan kitchen, dining and living area. This well-appointed North facing living area opens out onto an outdoor entertaining area and an internal access double garage completes the package.

### more features.

- + Close to Local Amenities
- + Personal Colour Consultation
- + Ensuite
- + Godfrey Hirst Flooring
- + 10 Year Registered Master Build Guarantee
- + Samsung Appliances



### Home and Land Package

A Home and Land Package is a section and home combination with finance options available.






Special T&C's apply to this package.

bringing you **more**

03 544 7873

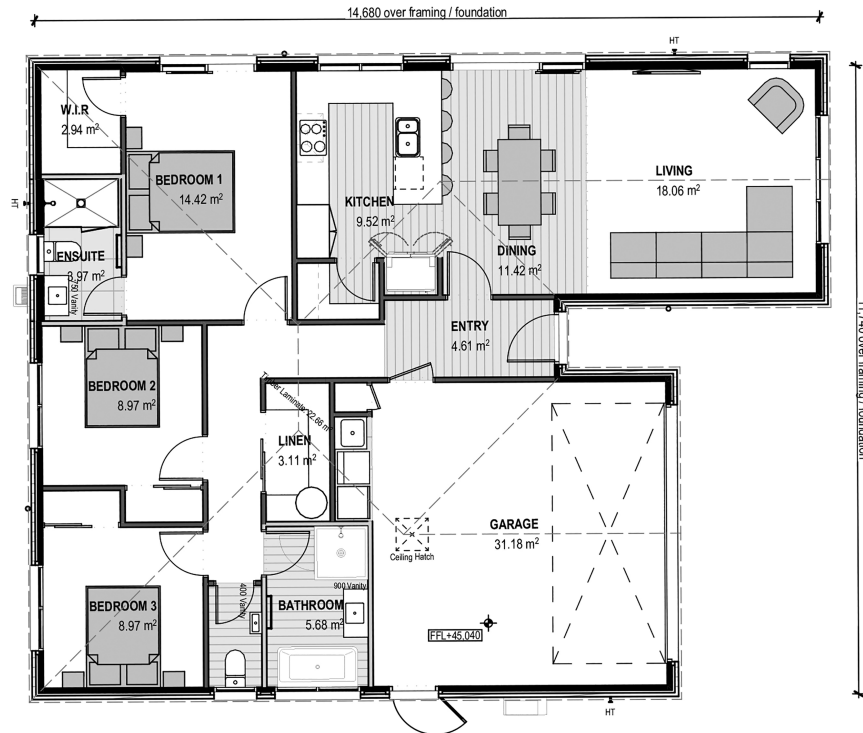
**mikegreerhomes.co.nz**

# Richmond - Tasman District 15 Hukere Crescent Richmond - Tasman District

dwelling size	section size	3	2	2	1	2
149 m <sup>2</sup>	458 m <sup>2</sup>					



NL0592



## After Sales Care

At Mike Greer Homes we are committed to making the build journey as stress-free as possible. Our After Sales Care programme addresses any maintenance issues and ensures that any remedial work is undertaken once it is logged and approved.

Disclaimer. While every reasonable effort has been made by Mike Greer Homes to ensure the information correctly illustrates the dwelling and section, this material may only be used by the Purchaser for illustrative and guidance purposes. Mike Greer Homes accepts no responsibility for any differences, errors or omissions which may become apparent during or on completion of the dwelling.

