

\$969,000

mikegreerhomes

St Albans

Lot 9, 104 Canon Street



for sale

dwelling size	section size
170 m ²	209 m ²

homes
for
sale

This attractive three double bedroom, two bathroom standalone home has a spacious and practical floor plan that would suit a range of people and lifestyles. The open plan kitchen/dining/living area offers easy access to the deck and outdoor entertaining area. The home also offers an internal access double garage and quality fixtures and fittings throughout, plus it benefits from a good location close to all amenities.

This premium development sits on the corner of Canon and Madras Street right on the outskirts of the City Centre. Enjoy living in the suburbs with the convenience of Central Christchurch right on your doorstep. With St Albans Park, English Park and Rugby Park nearby, you'll have easy access to a multitude of recreational facilities. Zoned for several schools and close to many amenities, these homes are positioned in a prime location!

more features.

- ✚ Fully Landscaped
- ✚ Complies with the Healthy Homes Standard
- ✚ Open Plan Living
- ✚ Smeg Appliances
- ✚ Stone Benchtop
- ✚ Tiled Shower








A Turn Key home is an all-inclusive package that only requires 10% deposit.

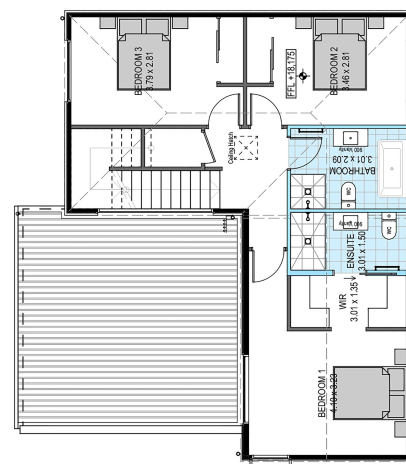
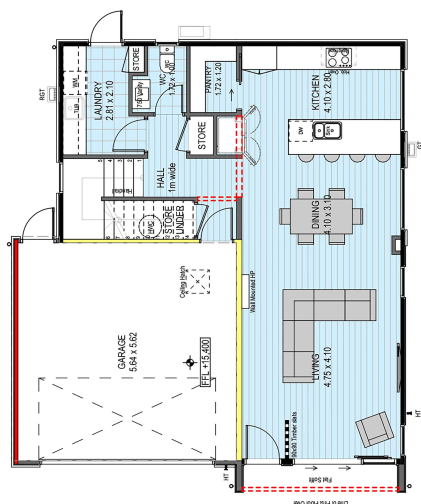
bringing you **more**

03 354 0166

mikegreerhomes.co.nz

Canon/Madras Development Lot 9, 104 Canon Street

dwelling size	section size	3	3	2	1	2
170 m ²	209 m ²					



After Sales Care

At Mike Greer Homes we are committed to making the build journey as stress-free as possible. Our After Sales Care programme addresses any maintenance issues and ensures that any remedial work is undertaken once it is logged and approved.

Disclaimer. While every reasonable effort has been made by Mike Greer Homes to ensure the information correctly illustrates the dwelling and section, this material may only be used by the Purchaser for illustrative and guidance purposes. Mike Greer Homes accepts no responsibility for any differences, errors or omissions which may become apparent during or on completion of the dwelling.

