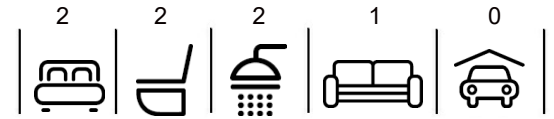


\$669,000

mikegreerhomes

Christchurch Central

Townhouse 2, Madras Square, Christchurch



Artist Impression Only

for sale

dwelling size

84 m²

homes
for
sale

This three storey home features an open plan kitchen, dining and living, two generous bedrooms with great storage and two fully tiled bathrooms complete with your own private outdoor area.

Introducing the iconic Madras Square development, ideally situated right in the centre of Christchurch, the most affordable and fastest growing city in NZ. Built along the East Frame, an oasis of recreation and thoughtful landscaping walkways, attracting professionals and young home buyers from all over the country and the world. Live or invest in the best possible location, walking distance to the bustling city centre, major employers and the new upcoming covered Stadium. A city re-built from the ground up with modern, world class infrastructure and facilities for future generation demands. Madras Square is more than just real estate, it's a lifetime of memories or great investment returns. This is one of the last developments of its kind in the CBD - an opportunity not to be missed.



Turn Key

A Turn Key home is an all-inclusive package that only requires 10% deposit.

more features.

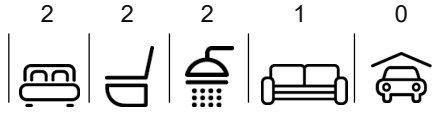
- ✦ Alarm
- ✦ Digital Key Entry
- ✦ Fully Landscaped
- ✦ Complies with the Healthy Homes Standard
- ✦ 10 Year Registered Master Build Guarantee
- ✦ Smeg Appliances
- ✦ Undertile Heating in Bathroom and Ensuite
- ✦ Window Coverings Included

bringing you **more**

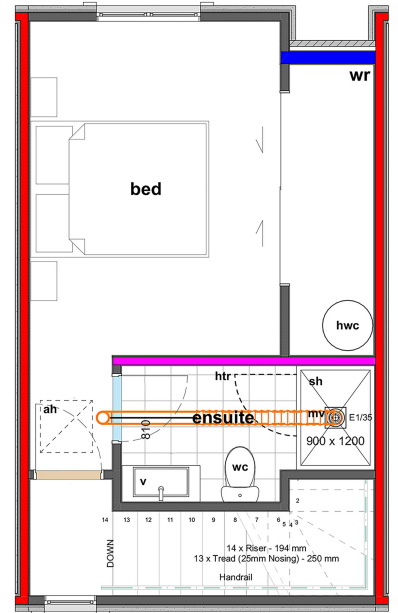
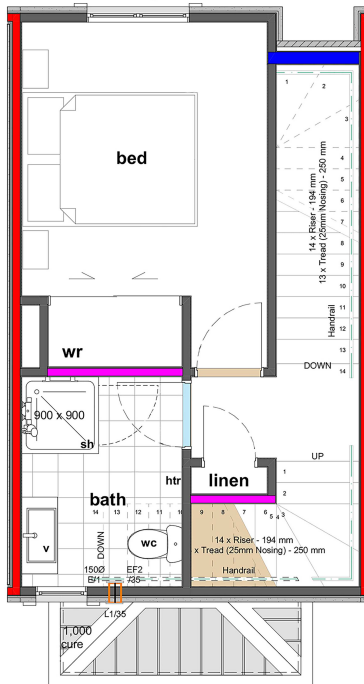
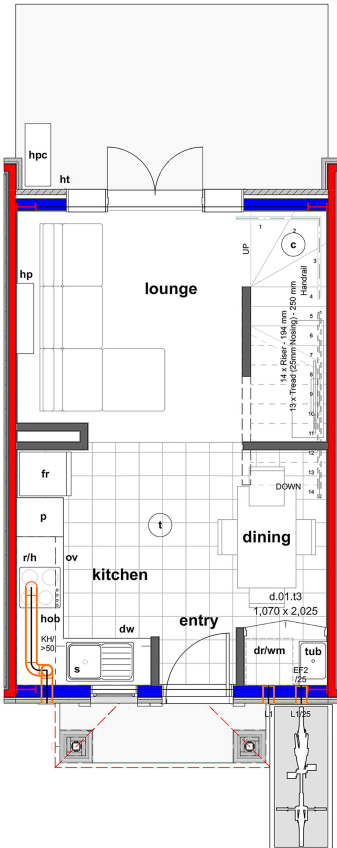
mikegreerhomes.co.nz

Madras Square Townhouse 2, Madras Square, Christchurch

dwelling size
84 m²



VC1344b



After Sales Care

At Mike Greer Homes we are committed to making the build journey as stress-free as possible. Our After Sales Care programme addresses any maintenance issues and ensures that any remedial work is undertaken once it is logged and approved.

Disclaimer. While every reasonable effort has been made by Mike Greer Homes to ensure the information correctly illustrates the dwelling and section, this material may only be used by the Purchaser for illustrative and guidance purposes. Mike Greer Homes accepts no responsibility for any differences, errors or omissions which may become apparent during or on completion of the dwelling.

