

\$1,265,000

mikegreerhomes

Rolleston

17 Finstock Way, Westwood - Showhome



for sale

dwelling size	section size
265 m ²	555 m ²

homes
for
sale

This home is light and bright, with a large entrance featuring a lightwell of skylights and double height cathedral ceilings complemented by aluminium battens for privacy. Thoughtfully designed, this spacious four-bedroom home comes with a dedicated nursery room, a large bedroom with ensuite access, ideal for teenagers and an additional double bedroom. With a study nook, separate lounge and loft space, this home is perfect for growing families.

Westwood is a part of the master-planned subdivision of Faringdon in Rolleston. Located to the West of Faringdon, it features wide tree-lined streets and plenty of green space with strong infrastructure. With a family friendly community in mind, the subdivision has two preschools and a primary school as part of the development, and a modern secondary school just down the road. Living in Rolleston will provide you an abundance of amenities nearby or if you're wanting to go further afield, Christchurch's CBD is only a thirty-minute drive via the Southern Motorway.



Turn Key

A Turn Key home is an all-inclusive package that only requires 10% deposit.

more features.






- ✚ Designer Kitchen
- ✚ Fairview Architectural Suite Windows
- ✚ Gas Fire
- ✚ Godfrey Hirst Flooring
- ✚ Smeg Appliances
- ✚ Stone Benchtop
- ✚ Undertile Heating in Bathroom and Ensuite
- ✚ Walk-in Pantry

bringing you **more**

03 354 0166

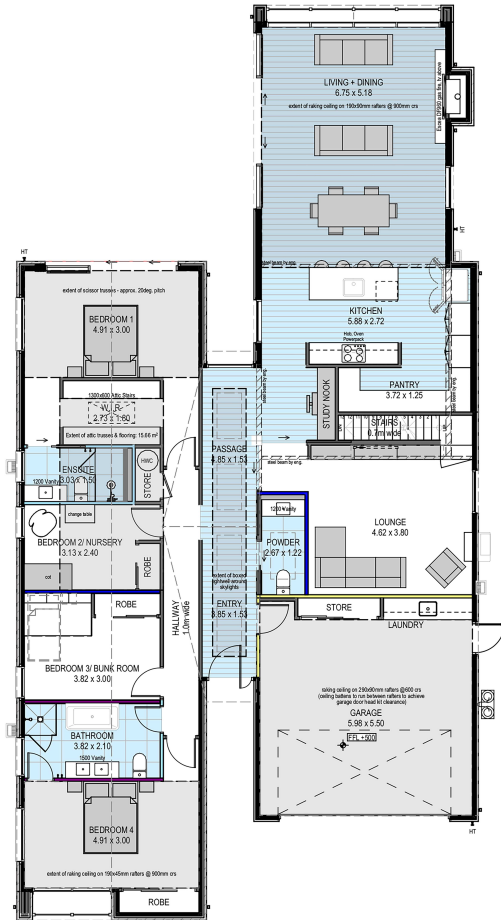
mikegreerhomes.co.nz

Westwood 17 Finstock Way, Westwood - Showhome

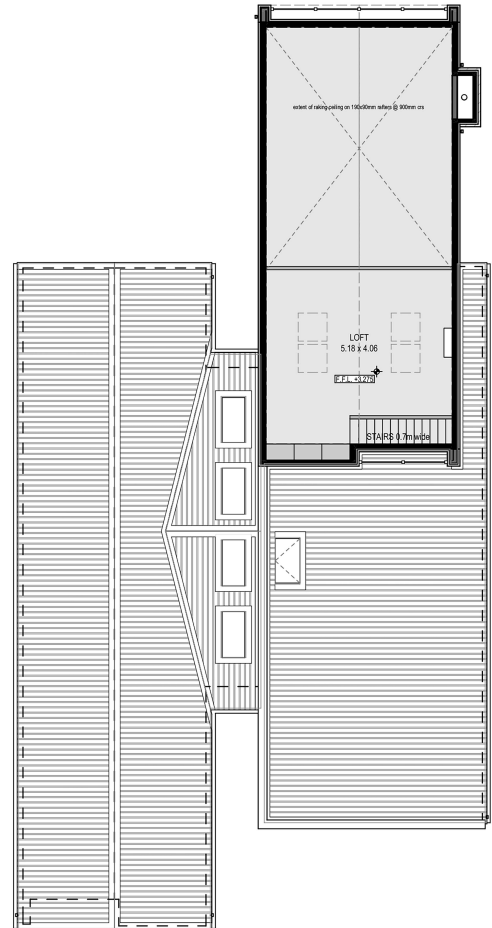
dwelling size	section size	4	3	2	2	2
265 m ²	555 m ²					



SL1039



Ground Floor Plan



First Floor Plan



After Sales Care

At Mike Greer Homes we are committed to making the build journey as stress-free as possible. Our After Sales Care programme addresses any maintenance issues and ensures that any remedial work is undertaken once it is logged and approved.

Disclaimer. While every reasonable effort has been made by Mike Greer Homes to ensure the information correctly illustrates the dwelling and section, this material may only be used by the Purchaser for illustrative and guidance purposes. Mike Greer Homes accepts no responsibility for any differences, errors or omissions which may become apparent during or on completion of the dwelling.

