

# \$725,000

# mikegreerhomes

## Massey

Townhouse 8, 48 Moire Road, Auckland



Artist Impression Only

# for sale

dwelling size  
69 m<sup>2</sup>

homes  
for  
sale

This two storey home comes with a carpark and features an open plan kitchen, dining and living area that connects to the outdoor space plus a separate laundry and toilet on the ground floor and two bedrooms and a bathroom on the first floor.

Moire Road is positioned right beside Moire Park and the West Harbour. Close to Westgate Shopping Centre and Costco NZ, built near large employers and transport hubs. A bus stop is close by plus easy access to the Northwestern Motorway for a direct commute to Auckland's CBD, being only 15 minutes away. A short drive to Lincoln Road, a famous area for eating and shopping, ensures a great work/life balance.

### more features.

- ✚ Fully Landscaped
- ✚ Complies with the Healthy Homes Standard
- ✚ 10 Year Registered Master Build Guarantee
- ✚ Open Plan Living
- ✚ Off-Street Carpark
- ✚ Window Coverings Included



**Turn Key**

A Turn Key home is an all-inclusive package that only requires 10% deposit.

bringing you **more**

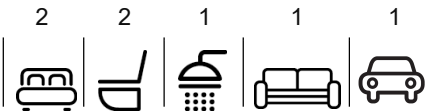
09 930 6270

[mikegreerhomes.co.nz](https://mikegreerhomes.co.nz)

## Moire Road Townhouse 8, 48 Moire Road, Auckland

dwelling size  
69 m<sup>2</sup>

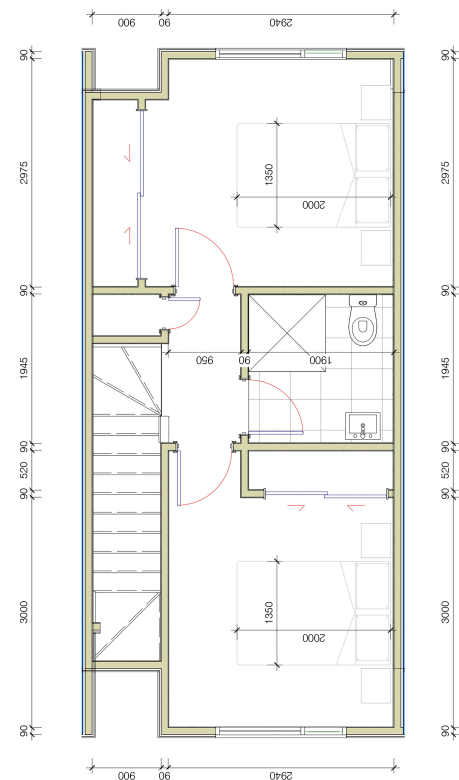
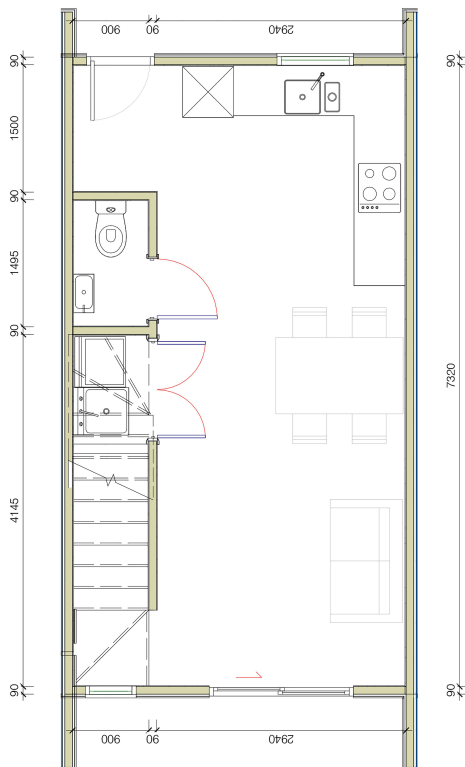
2 2 1 1 1



KiwiSaver  
Poua he Oranga



CA0435d



### After Sales Care

At Mike Greer Homes we are committed to making the build journey as stress-free as possible. Our After Sales Care programme addresses any maintenance issues and ensures that any remedial work is undertaken once it is logged and approved.

Disclaimer. While every reasonable effort has been made by Mike Greer Homes to ensure the information correctly illustrates the dwelling and section, this material may only be used by the Purchaser for illustrative and guidance purposes. Mike Greer Homes accepts no responsibility for any differences, errors or omissions which may become apparent during or on completion of the dwelling.

